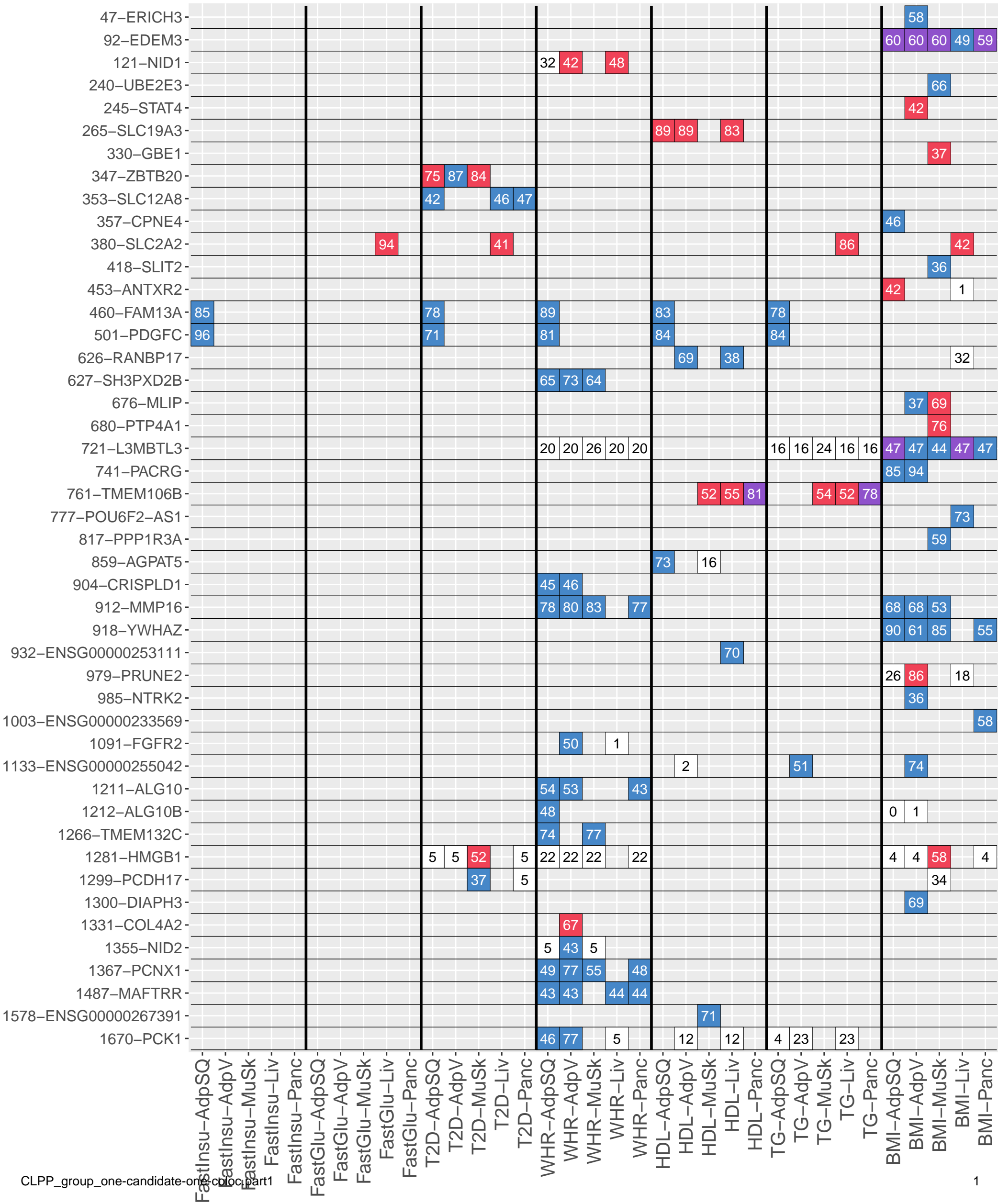
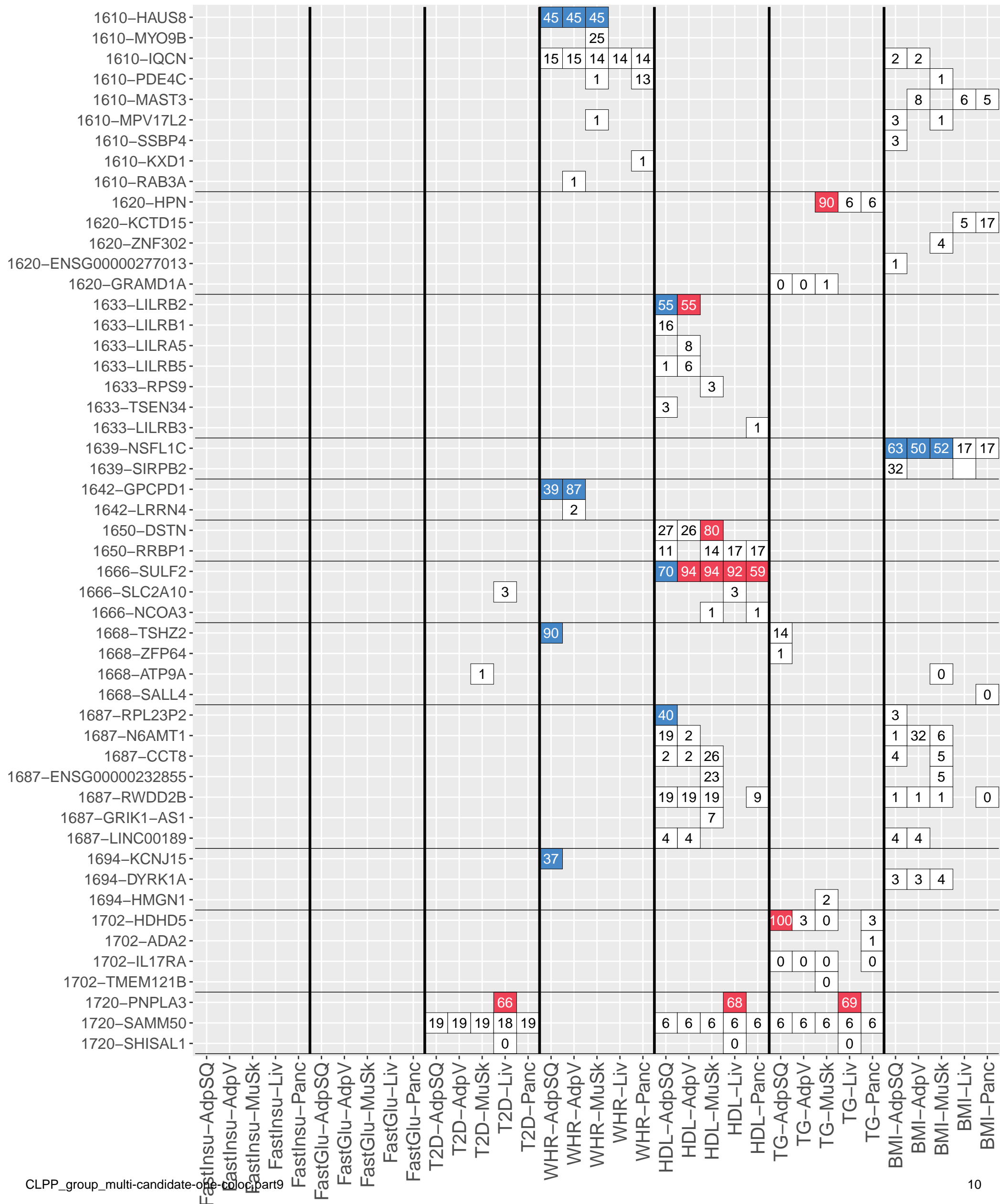
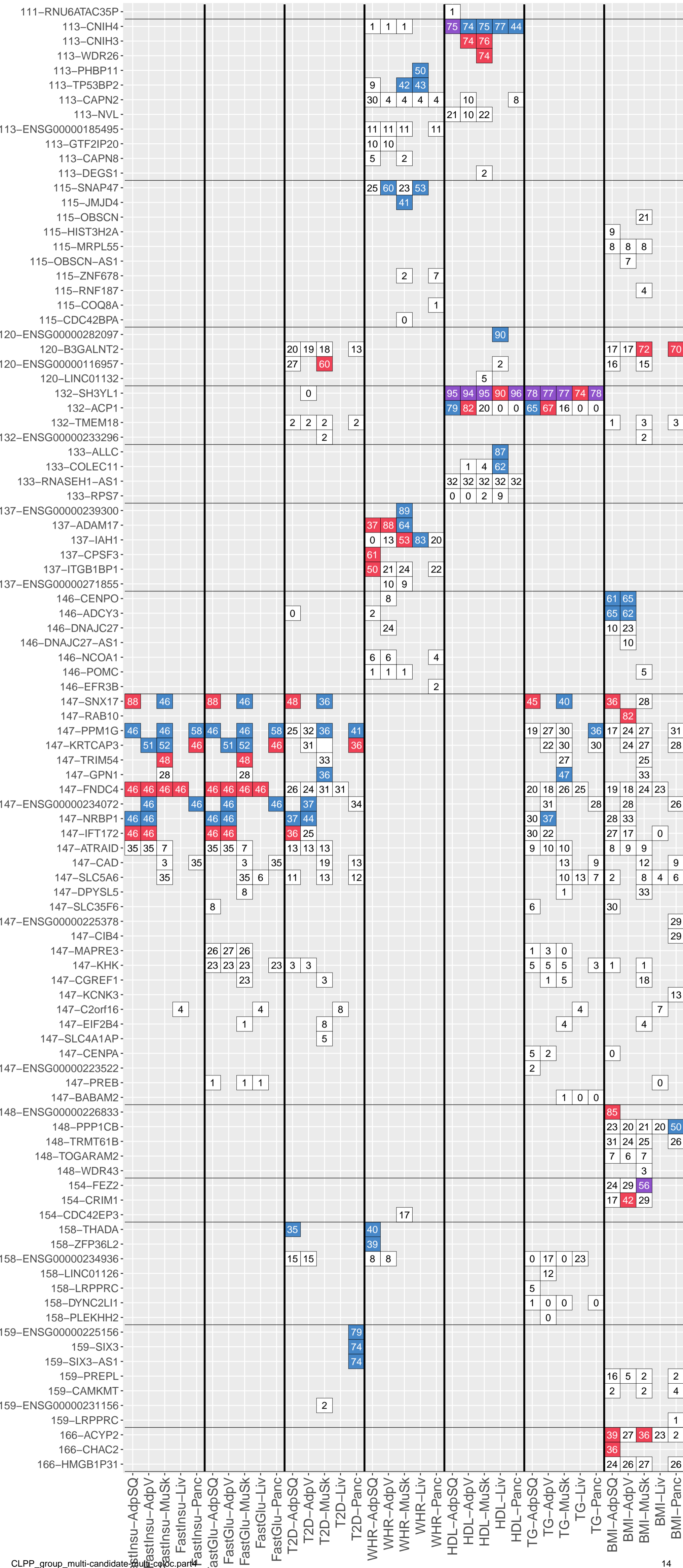


CLPP none sqtl eqtl both

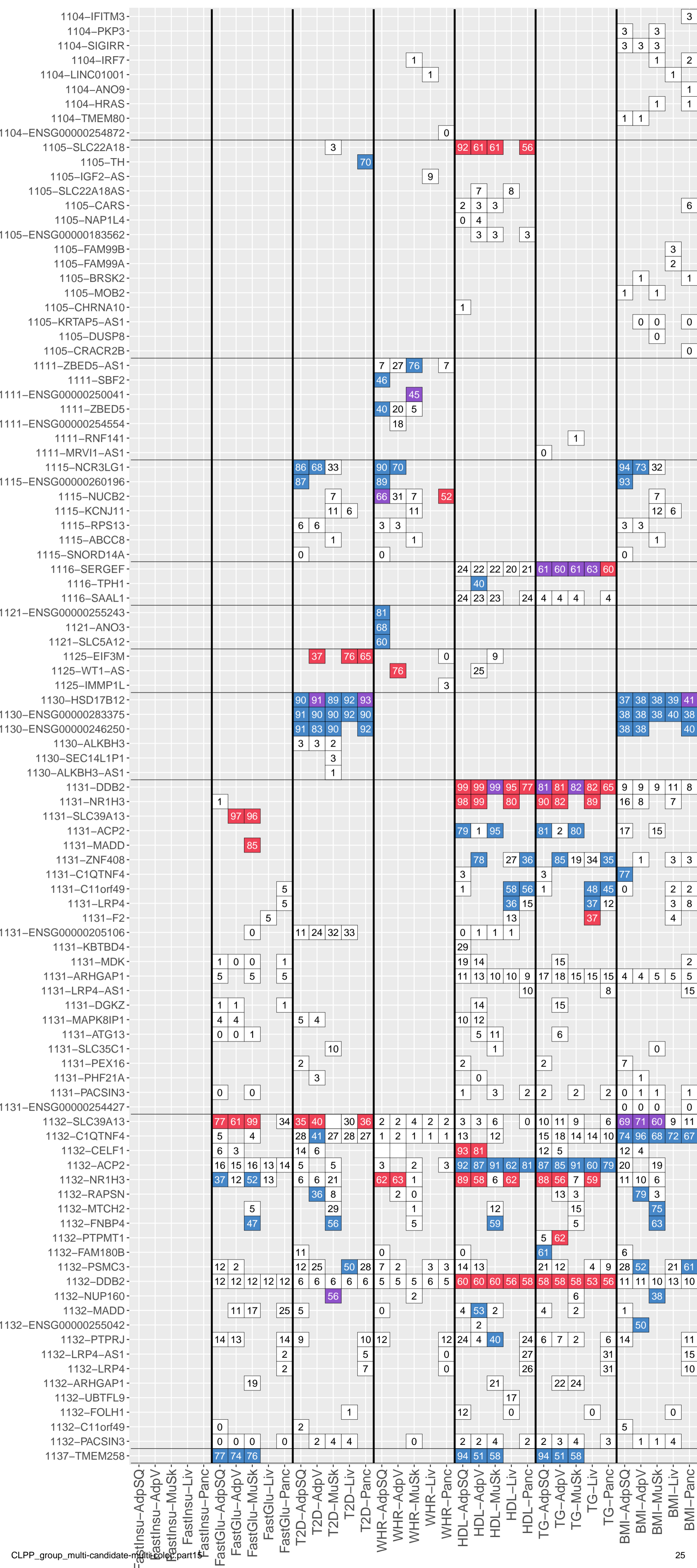


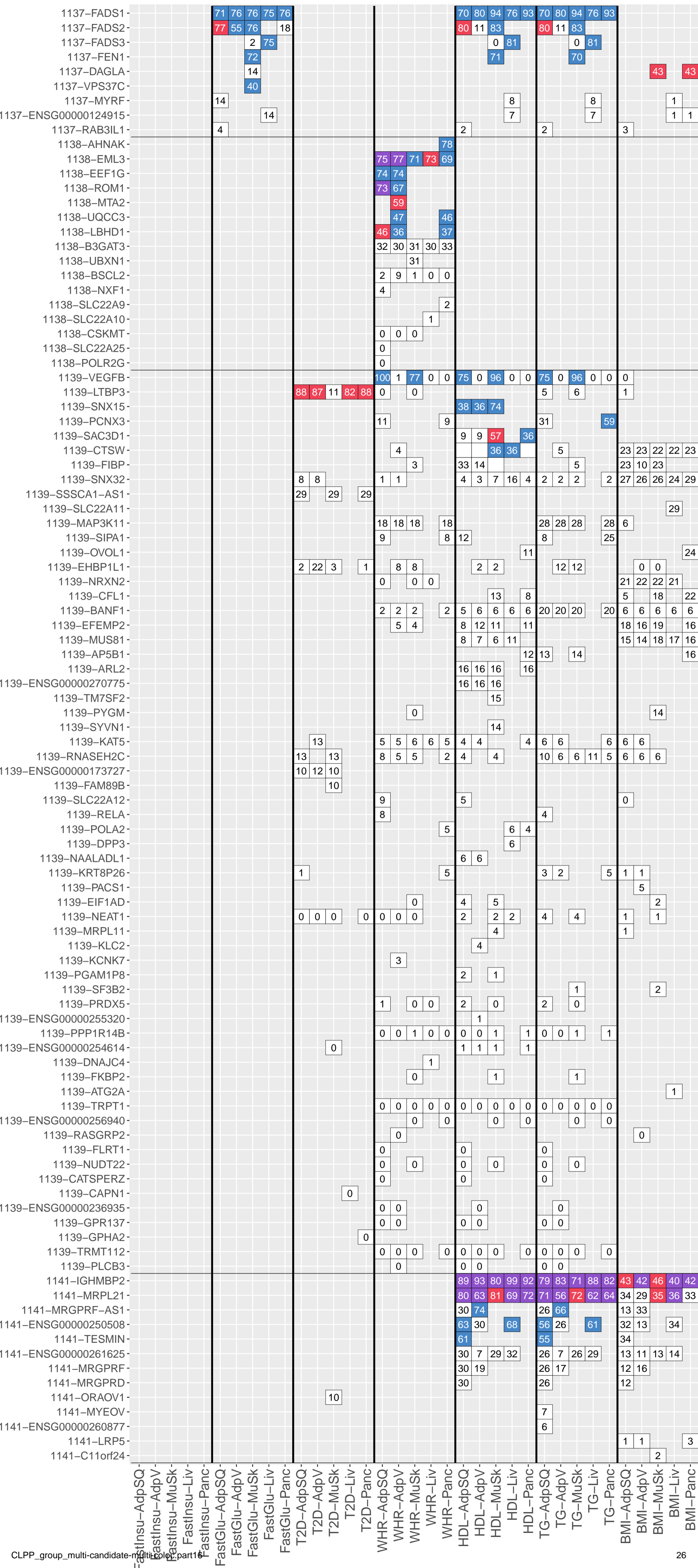
CLPP none sqtl eqtl both

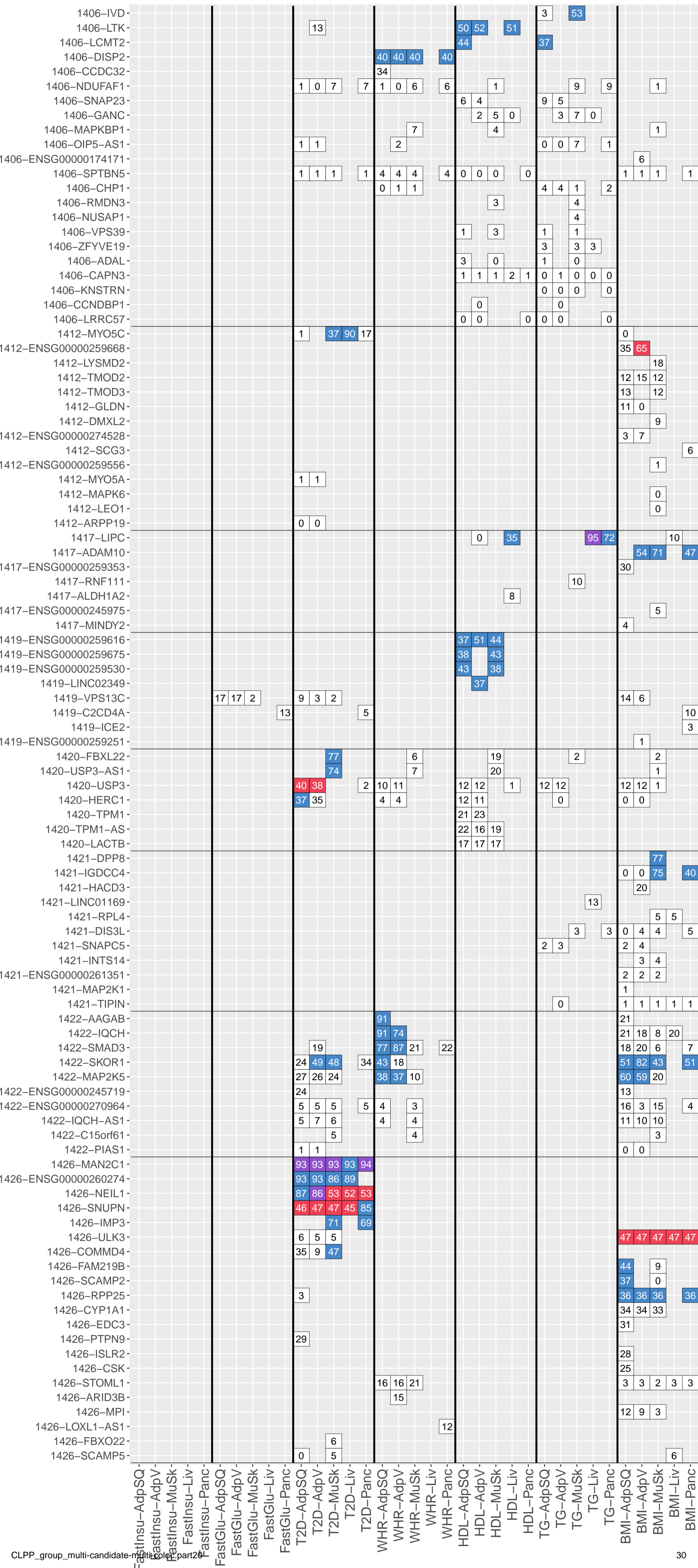


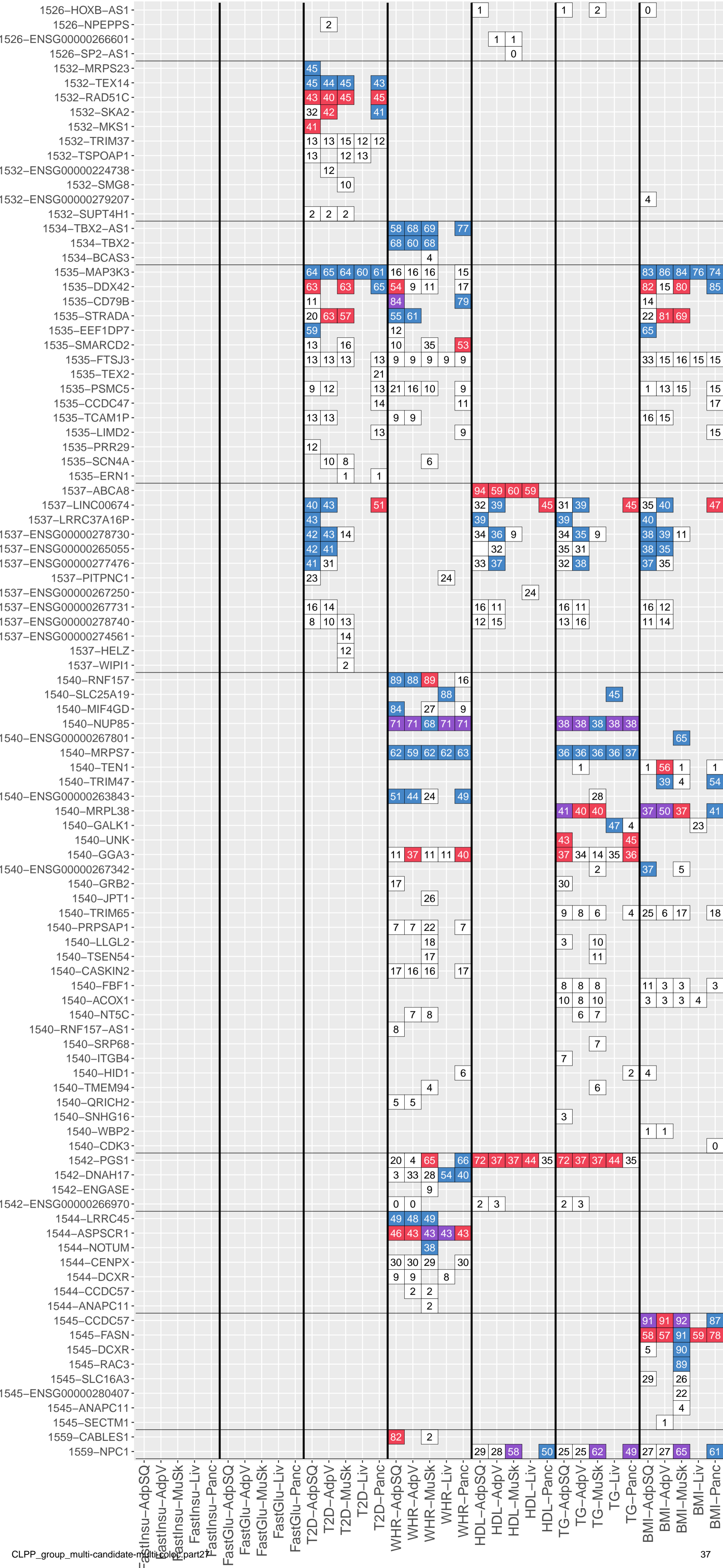


Gene	FastInsu-AdpSQ	FastInsu-AdpV	FastInsu-MuSk	FastInsu-Liv	FastInsu-Panc	FastGlu-AdpSQ	FastGlu-AdpV	FastGlu-MuSk	FastGlu-Liv	FastGlu-Panc	T2D-AdpSQ	T2D-AdpV	T2D-MuSk	T2D-Liv	T2D-Panc	WHR-AdpSQ	WHR-AdpV	WHR-MuSk	WHR-Liv	WHR-Panc	HDL-AdpSQ	HDL-AdpV	HDL-MuSk	HDL-Liv	HDL-Panc	TG-AdpSQ	TG-AdpV	TG-MuSk	TG-Liv	TG-Panc	BMI-AdpSQ	BMI-AdpV	BMI-MuSk	BMI-Liv	BMI-Panc			
310-RBM6																1	1				0	1	1			1	1	1		1								
310-MST1																1	1		1	1		1	1			1	1	1	1		1	1	0	0		0	0	
310-FAM212A																		1					1					1										
310-FCF1P2																		0																				
311-RBM6	1	1	1		1	56	60	54	56	63	13	10	13	11	82	92	79	52	96															98	99	99	84	98
311-IP6K2	79	98	40	98	28						10	45	10	10	10	2	2	2	2	2													41	41	40	41	41	
311-MST1	84	95	34	83	83	3	3			3	3	28	29	7	1	1	0	1	10	2	0											93	12		52	78		
311-FAM212A			83					4						30					0														90					
311-UBA7			89		10									44					1		6												1			49		
311-APEH	84	80	85								1	2	2			0	2	1														0	2	2				
311-ARIH2	2		2		2						41		83		42	1		9			1										8		8		8			
311-MST1R	10		2			45		54			6		5		45		79													51		83						
311-MON1A								36										63		81												60						
311-GPX1			80										1					0														1						
311-SEMA3F						48	14				14				47	21															71	15						
311-QRICH1	1	1			1						71	64			70	7	6													6	5				6			
311-RNF123	10	10	5	10		45	44	17			68	6	59	6		45	43	13	43										51	49	24	49						
311-AMT	3	29	3		3	8	8	8			51	50	51		66	8	13	8			6								10	10	10				6			
311-P4HTM		2			3						44	39			63	7	8				9								6	7					13			
311-PRKAR2A			1								61		53			0		1											3		10							
311-ENSG00000270441																58																				2		
311-HEMK1													53		58		56														20		14		45			
311-NDUFAF3																58																		2				
311-C3orf18																57																		15				
311-KLHDC8B																55															12					8		
311-RHOA			1	2				5					54	53				6	6													7	6					
311-LINC02019											53																				23							
311-TCTA	2										52						10														11							
311-NICN1	3	3	3		3						51	48	47		52	8	13	13			9									9	14	14			10			
311-USP4	3		1								49		52			10		10												11		10						
311-DALRD3	1		1	1	2						41		48	44	37	8		9	9	8										7		8	7	7				
311-GRM2											43		42																		12		12					
311-TEX264											36	37	40		42																12	12	12			12		
311-WDR6	2	2	2		2	2	2	2		4	41	40	41	40	41	5	6	8	8	8										7	8	7	7	7				
311-NCKIPSD	2	2	2	2	2						40	39	39	41	38	1	1	1	1	1											2	2	3	2	3			
311-CELSR3	2										40					1															2							
311-CCDC36	2	2						3			35	35	38			10	9	8													8	8	7					
311-ENSG00000225399		2						3					33			9	7															8	6					
311-HYAL1								2			15	15	34																		3		3					
311-GMPPB	3	3	3	21	3	5	5	5	6	5	18	18	18	21	18	18	18	18	18	18										30	28	29	29	28				
311-BSN-AS2			29																														10					
311-GNAI2								2	2					3		26	14	14	9														3	3				
311-HYAL3								8	8					10	3	1	3		4	7	19										3	13	2			3		
311-SLC26A6																	0																	17				
311-RASSF1								8								14		4														11						
311-CYB561D2								14								5	2	3		3													5	0				
311-ENSG00000230454																																						
311-DOCK3														9																			1	1				
311-IFRD2																																		9				
311-BSN										2																										1		
311-NAT6																																						
311-SEMA3B-AS1										7			0	6																								
311-RASSF1-AS1													6																									
311-ATRIP																																		6				
311-CACNA2D2																																						
311-MAPKAPK3																																			5	0		
311-ZMYND10																																						
311-QARS																																						
311-RAD54L2																																						
311-RBM15B																																						
311-TREX1																																		3	2			
311-TMA7																																			1			
312-RFT1						89	90	94		87	3				5	93	93	98		91	86	87	92		85	2		3						3				
312-SERBP1P3						91	90	94	89	90						94	94	98	94	93	88	88	92	87	87				3									
312-ITIH4						21	9	4	10	18	32	12	20	32	29	21	8	4	18	17</																		

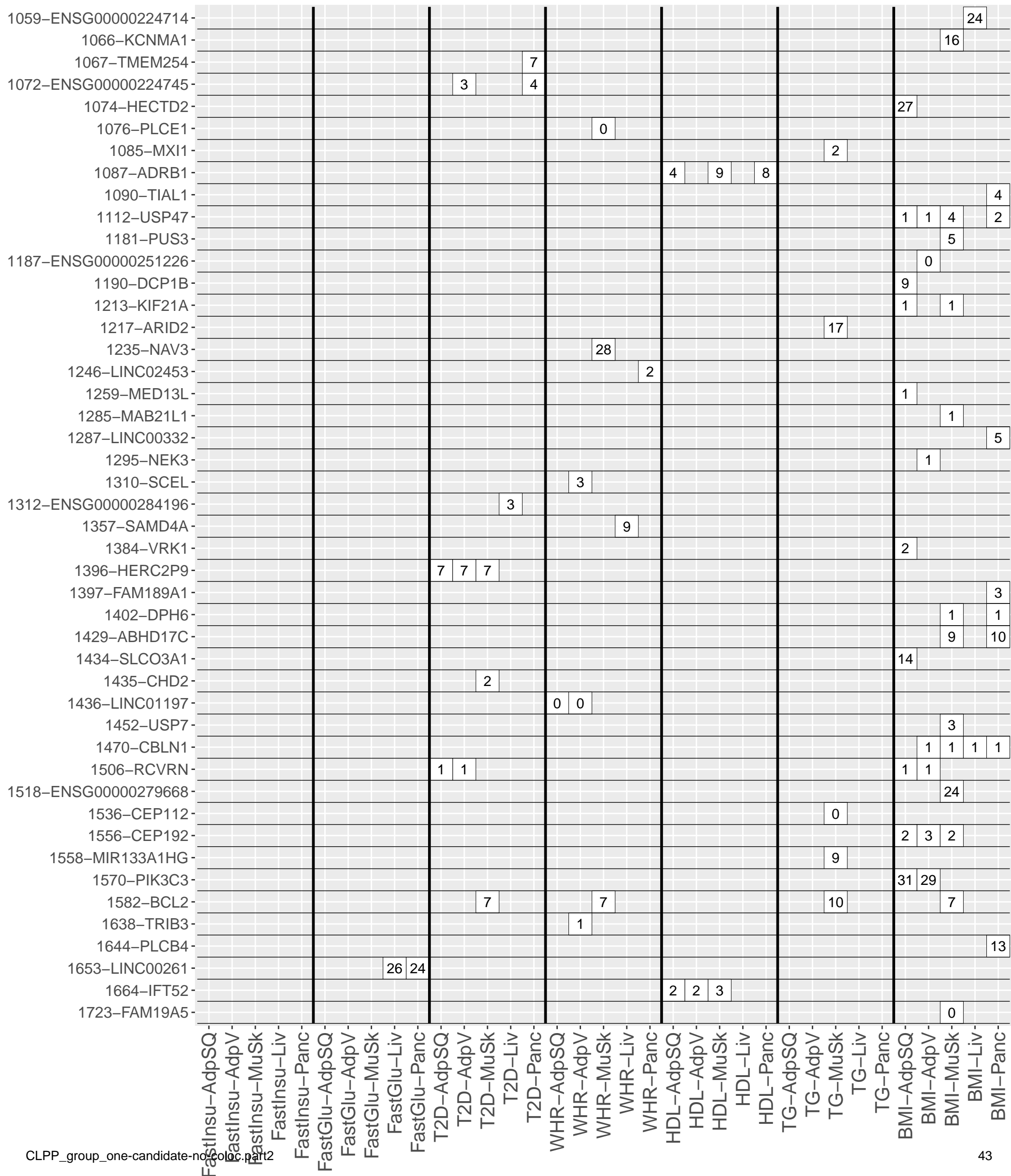








CLPP none sqtl eqtl both



CLPP none sqtl eqtl both

Gene	FastInsu-AdpSQ	FastInsu-AdpV	FastInsu-MuSk	FastInsu-Liv	FastInsu-Panc	FastGlu-AdpSQ	FastGlu-AdpV	FastGlu-MuSk	FastGlu-Liv	FastGlu-Panc	T2D-AdpSQ	T2D-AdpV	T2D-MuSk	T2D-Liv	T2D-Panc	WHR-AdpSQ	WHR-AdpV	WHR-MuSk	WHR-Liv	WHR-Panc	HDL-AdpSQ	HDL-AdpV	HDL-MuSk	HDL-Liv	HDL-Panc	TG-AdpSQ	TG-AdpV	TG-MuSk	TG-Liv	TG-Panc	BMI-AdpSQ	BMI-AdpV	BMI-MuSk	BMI-Liv	BMI-Panc				
1659-NDRG3																															0	0							
1659-MYL9																																0							
1667-PREX1																																		26					
1667-LINC01273											14	4	4	5	4	1	3	3				3																	
1667-ZFAS1																						1										5	4	5		8			
1667-STAU1																																2	5	5	4				
1667-CEBPB-AS1											2										4																		
1667-SMIM25											3										1																		
1667-UBE2V1											3																												
1667-CSE1L																															2	2	2			2			
1667-RIPOR3																																							
1667-DDX27																																					0		
1671-NPEPL1											10	10																											
1671-STX16													4																										
1671-NELFCD														0																									
1674-DIDO1																																					10 31 24 10 10		
1674-GID8																																					24 28 16		
1674-SRMS																																					12		
1674-PPDPF																																						9 9 9 9 9	
1674-PTK6																																						4 8	
1674-ARFRP1																																						7	
1674-TPD52L2																																						5	
1674-LIME1																																						4	
1674-TCFL5																																						1	
1674-PRPF6																																						0	
1696-BACE2																																						22 25 1 18	
1696-LINC00323																																						18	
1696-FAM3B																																						0 0 11	
1710-CHEK2																																						18 2	
1710-XBP1																																						6 6	
1710-ZNRF3-AS1																																						4 5	
1710-TTC28																																						0 3	
1710-KREMEN1																																						0 0 3 0 0 1	
1710-RHBDD3																																						2	
1710-ASCC2																																						0 1	
1710-NF2																																						0 0	
1710-TTC28-AS1																																						0 0	
1722-ENSG00000260708																																						20 20 20 20	
1722-TBC1D22A																																						15 15	
1725-MAPK12																																							2
1725-PLXNB2																																							32 30 30 5 4
1725-SELENOO																																						26 4 28 20	
1725-MAPK11																																						11 6 8	
1725-TRABD																																						11	
1725-HDAC10																																						2 7 7 2	
1725-TUBGCP6																																						3 4 2 2	
1725-PPP6R2																																						3	
1725-CRELD2																																						1 2	
1725-ALG12																																							1 2 1
1725-ENSG00000273137																																							1 1
1725-CPT1B																																							1
1725-ENSG00000273253																																							1 1 1 1
1725-ENSG00000278869																																							1 1
1725-ARSA																																							0