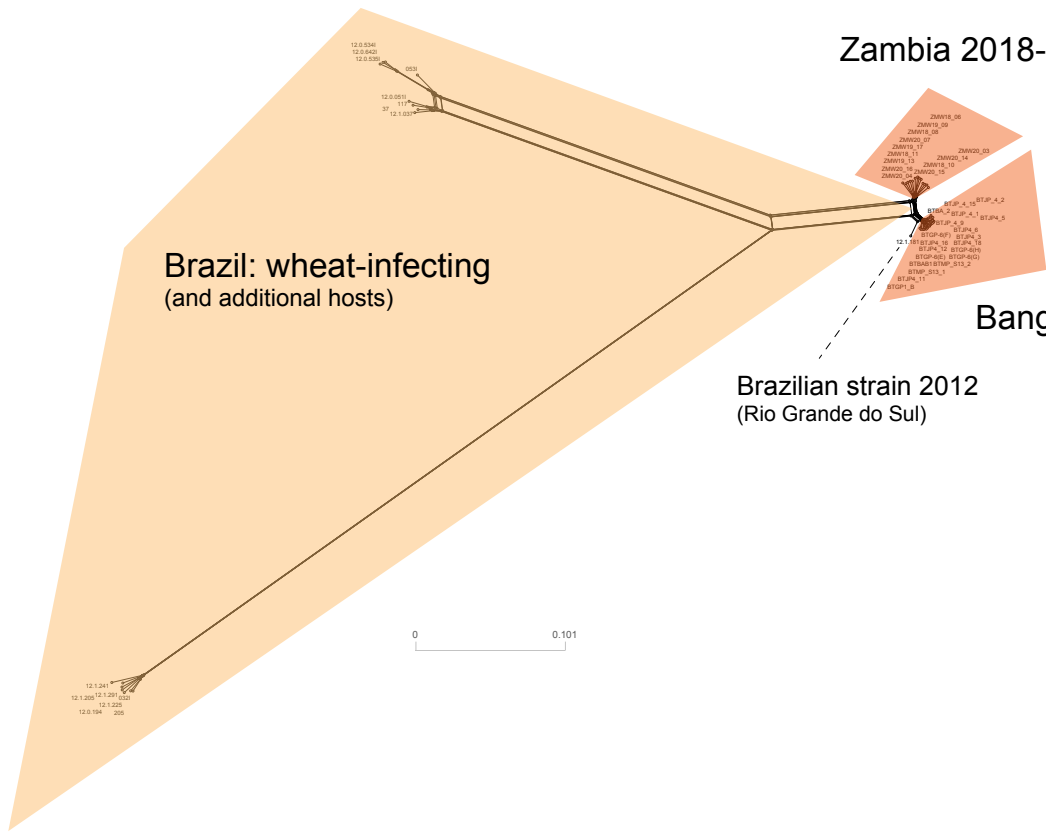


Zambia 2018-20

Brazil: wheat-infecting
(and additional hosts)

Bangladesh 2016-17

Brazilian strain 2012
(Rio Grande do Sul)



12.1.244
12.1.205 12.1.297
12.1.225
12.0.194 205

12.0.654
12.0.642
12.0.636

12.0.059
32 117
31 12.1.037

ZMW16_06
ZMW16_09
ZMW16_08
ZMW20_07
ZMW16_11
ZMW16_12
ZMW20_10
ZMW20_15
ZMW20_16
ZMW20_03

BTAP_4_2
BTAP_4_1
BTAP_5
BTAP_6
BTAP_8
BTAP_9
BTAP_10
BTAP_11
BTAP_12
BTAP_13
BTAP_14
BTAP_15
BTAP_16
BTAP_17
BTAP_18
BTAP_19
BTAP_20
BTAP_21
BTAP_22
BTAP_23
BTAP_24
BTAP_25
BTAP_26
BTAP_27
BTAP_28
BTAP_29
BTAP_30
BTAP_31
BTAP_32
BTAP_33
BTAP_34
BTAP_35
BTAP_36
BTAP_37
BTAP_38
BTAP_39
BTAP_40
BTAP_41
BTAP_42
BTAP_43
BTAP_44
BTAP_45
BTAP_46
BTAP_47
BTAP_48
BTAP_49
BTAP_50
BTAP_51
BTAP_52
BTAP_53
BTAP_54
BTAP_55
BTAP_56
BTAP_57
BTAP_58
BTAP_59
BTAP_60
BTAP_61
BTAP_62
BTAP_63
BTAP_64
BTAP_65
BTAP_66
BTAP_67
BTAP_68
BTAP_69
BTAP_70
BTAP_71
BTAP_72
BTAP_73
BTAP_74
BTAP_75
BTAP_76
BTAP_77
BTAP_78
BTAP_79
BTAP_80
BTAP_81
BTAP_82
BTAP_83
BTAP_84
BTAP_85
BTAP_86
BTAP_87
BTAP_88
BTAP_89
BTAP_90
BTAP_91
BTAP_92
BTAP_93
BTAP_94
BTAP_95
BTAP_96
BTAP_97
BTAP_98
BTAP_99
BTAP_100