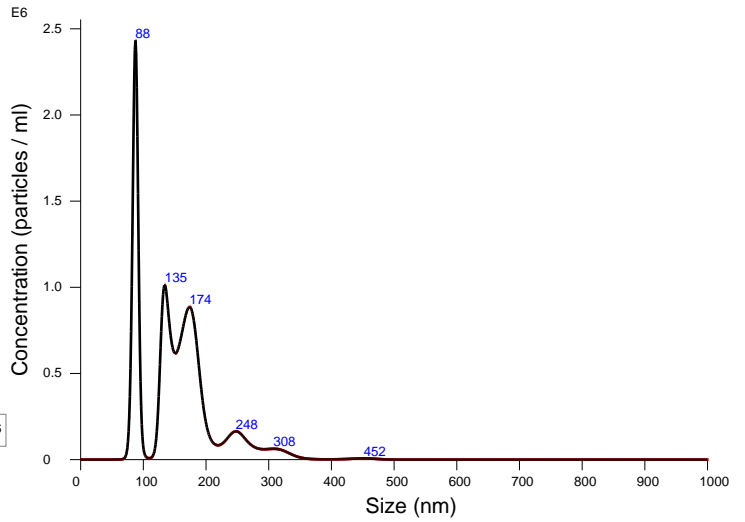


FTLA Concentration / Size graph for Experiment:  
siT3 2020-02-13 20-29-55



Averaged FTLA Concentration / Size for Experiment:  
siT3 2020-02-13 20-29-55  
Error bars indicate + / -1 standard error of the mean

**Included Files**

siT3 2020-02-13 20-30-06

**Details**

NTA Version: NTA 3.2 Dev Build 3.2.16  
 Script Used: SOP Standard Measurement 08-29-12PM 13~  
 Time Captured: 20:29:55 13/02/2020  
 Operator: Nakamura  
 Pre-treatment:  
 Sample Name: siT3  
 Diluent: 50000  
 Remarks: Cam14

**Capture Settings**

Camera Type: sCMOS  
 Laser Type: Blue488  
 Camera Level: 14  
 Slider Shutter: 1259  
 Slider Gain: 366  
 FPS: 25.0  
 Number of Frames: 1498  
 Temperature: 24.5 °C  
 Viscosity: (Water) 0.9 cP  
 Dilution factor: Dilution not recorded

**Analysis Settings**

Detect Threshold: 5  
 Blur Size: Auto  
 Max Jump Distance: Auto: 10.5 pix

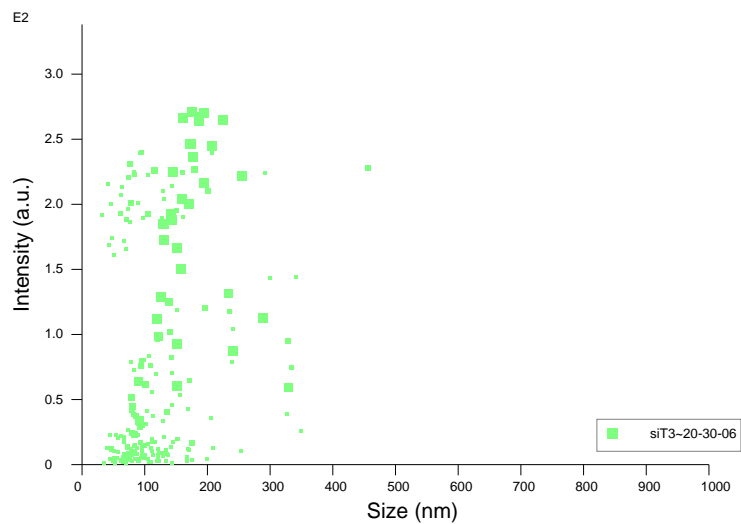
**Results**

Stats: Merged Data

Mean: 153.1 nm  
 Mode: 87.4 nm  
 SD: 60.4 nm  
 D10: 84.6 nm  
 D50: 147.5 nm  
 D90: 235.4 nm

Stats: Mean +/- Standard Error

Mean: 153.1 +/- 0.0 nm  
 Mode: 87.4 +/- 0.0 nm  
 SD: 60.4 +/- 0.0 nm  
 D10: 84.6 +/- 0.0 nm  
 D50: 147.5 +/- 0.0 nm  
 D90: 235.4 +/- 0.0 nm  
 Concentration: 9.54e+007 +/- 0.00e+000 particles/ml  
 4.8 +/- 0.0 particles/frame  
 5.3 +/- 0.0 centres/frame



Intensity / Size graph for Experiment:  
siT3 2020-02-13 20-29-55

**Script Used: (Full Text):**

SOP Standard Measurement 08-29-12PM 13Feb2020.txt