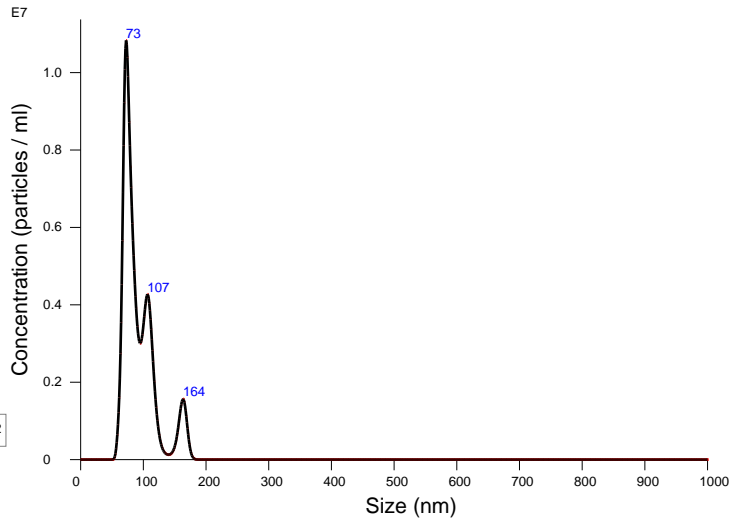


FTLA Concentration / Size graph for Experiment:
siT1 2020-02-13 20-22-09



Averaged FTLA Concentration / Size for Experiment:
siT1 2020-02-13 20-22-09
Error bars indicate + / -1 standard error of the mean

Included Files

siT1 2020-02-13 20-22-22

Details

NTA Version: NTA 3.2 Dev Build 3.2.16
 Script Used: SOP Standard Measurement 08-21-34PM 13~
 Time Captured: 20:22:09 13/02/2020
 Operator: Nakamura
 Pre-treatment:
 Sample Name: siT1
 Diluent: 50000
 Remarks: Cam14

Capture Settings

Camera Type: sCMOS
 Laser Type: Blue488
 Camera Level: 14
 Slider Shutter: 1259
 Slider Gain: 366
 FPS: 25.0
 Number of Frames: 1498
 Temperature: 24.7 °C
 Viscosity: (Water) 0.9 cP
 Dilution factor: Dilution not recorded

Analysis Settings

Detect Threshold: 5
 Blur Size: Auto
 Max Jump Distance: Auto: 11.8 pix

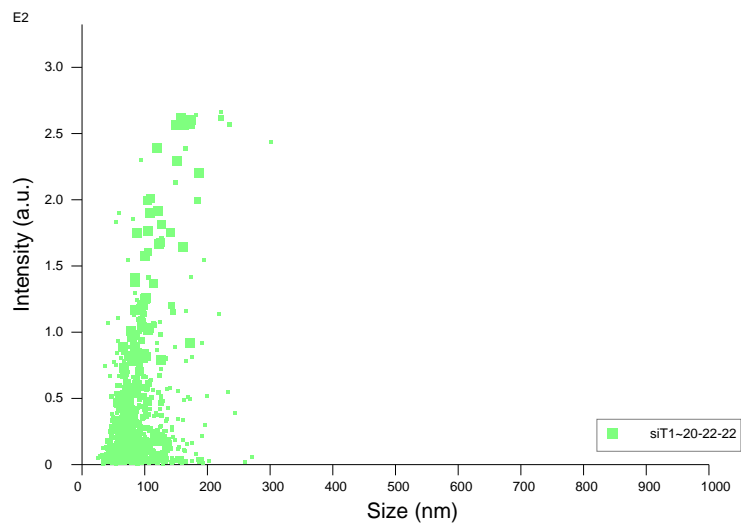
Results

Stats: Merged Data

Mean: 92.3 nm
 Mode: 72.7 nm
 SD: 26.4 nm
 D10: 67.3 nm
 D50: 82.3 nm
 D90: 121.6 nm

Stats: Mean +/- Standard Error

Mean: 92.3 +/- 0.0 nm
 Mode: 72.7 +/- 0.0 nm
 SD: 26.4 +/- 0.0 nm
 D10: 67.3 +/- 0.0 nm
 D50: 82.3 +/- 0.0 nm
 D90: 121.6 +/- 0.0 nm
 Concentration: 3.31e+008 +/- 0.00e+000 particles/ml
 16.8 +/- 0.0 particles/frame
 17.7 +/- 0.0 centres/frame



Intensity / Size graph for Experiment:
siT1 2020-02-13 20-22-09

Script Used: (Full Text):

SOP Standard Measurement 08-21-34PM 13Feb2020.txt