

Error bars indicate + / -1 standard error of the mean

**Included Files**

sham3 2020-02-13 20-06-20

**Details**

NTA Version: NTA 3.2 Dev Build 3.2.16  
 Script Used: SOP Standard Measurement 08-04-17PM 13~  
 Time Captured: 20:06:10 13/02/2020  
 Operator: Nakamura  
 Pre-treatment:  
 Sample Name: Sham3  
 Diluent: 50000  
 Remarks: Cam14

**Capture Settings**

Camera Type: sCMOS  
 Laser Type: Blue488  
 Camera Level: 14  
 Slider Shutter: 1259  
 Slider Gain: 366  
 FPS: 25.0  
 Number of Frames: 1498  
 Temperature: 24.4 °C  
 Viscosity: (Water) 0.9 cP  
 Dilution factor: Dilution not recorded

**Analysis Settings**

Detect Threshold: 5  
 Blur Size: Auto  
 Max Jump Distance: Auto: 9.8 pix

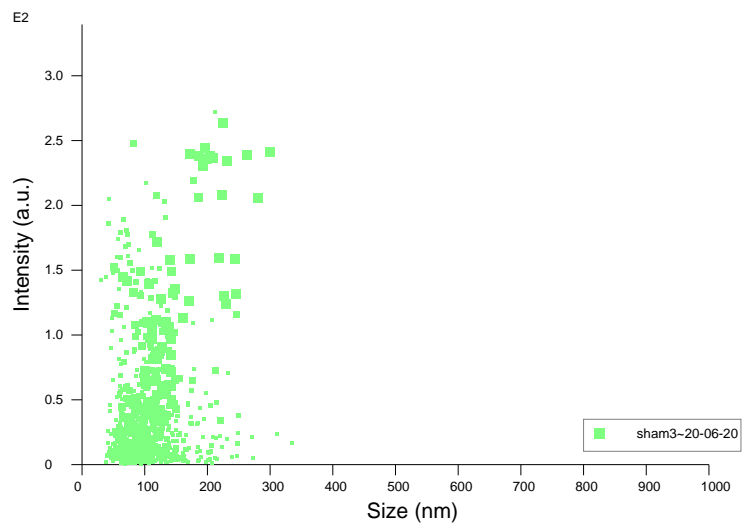
**Results**

Stats: Merged Data

Mean: 122.7 nm  
 Mode: 122.2 nm  
 SD: 43.7 nm  
 D10: 75.9 nm  
 D50: 116.9 nm  
 D90: 196.6 nm

Stats: Mean +/- Standard Error

Mean: 122.7 +/- 0.0 nm  
 Mode: 122.2 +/- 0.0 nm  
 SD: 43.7 +/- 0.0 nm  
 D10: 75.9 +/- 0.0 nm  
 D50: 116.9 +/- 0.0 nm  
 D90: 196.6 +/- 0.0 nm  
 Concentration: 3.29e+008 +/- 0.00e+000 particles/ml  
 16.7 +/- 0.0 particles/frame  
 17.4 +/- 0.0 centres/frame



Intensity / Size graph for Experiment:  
sham3 2020-02-13 20-06-10

**Script Used: (Full Text):**

SOP Standard Measurement 08-04-17PM 13Feb2020.txt