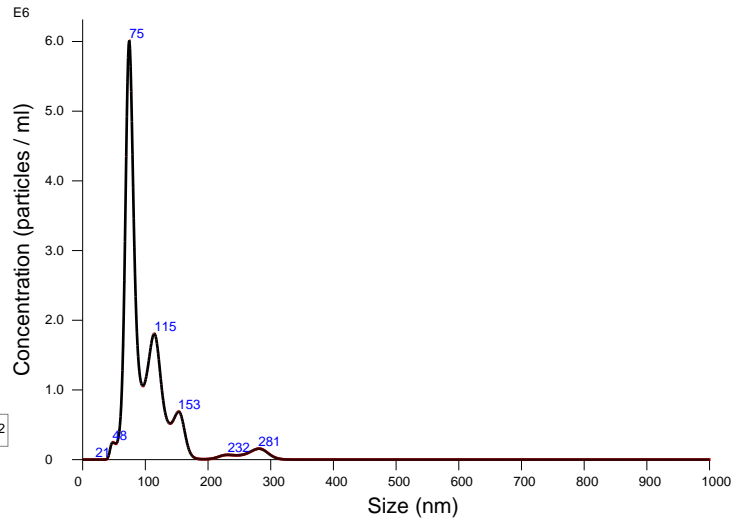


FTLA Concentration / Size graph for Experiment:
sham2 2020-02-13 20-01-40



Averaged FTLA Concentration / Size for Experiment:
sham2 2020-02-13 20-01-40
Error bars indicate + / -1 standard error of the mean

Included Files

sham2 2020-02-13 20-01-52

Details

NTA Version: NTA 3.2 Dev Build 3.2.16
 Script Used: SOP Standard Measurement 08-00-13PM 13~
 Time Captured: 20:01:40 13/02/2020
 Operator: Nakamura
 Pre-treatment:
 Sample Name: Sham2
 Diluent: 50000
 Remarks: Cam14

Capture Settings

Camera Type: sCMOS
 Laser Type: Blue488
 Camera Level: 14
 Slider Shutter: 1259
 Slider Gain: 366
 FPS: 25.0
 Number of Frames: 1498
 Temperature: 23.3 °C
 Viscosity: (Water) 0.9 cP
 Dilution factor: Dilution not recorded

Analysis Settings

Detect Threshold: 5
 Blur Size: Auto
 Max Jump Distance: Auto: 13.6 pix

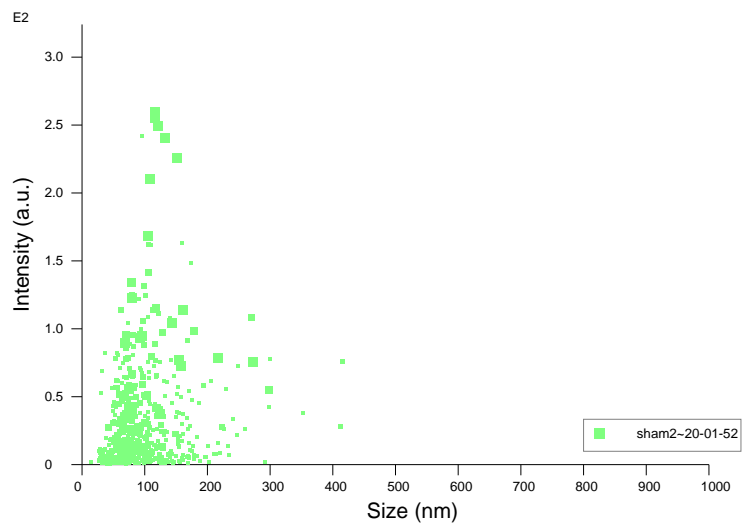
Results

Stats: Merged Data

Mean: 102.1 nm
 Mode: 74.3 nm
 SD: 45.1 nm
 D10: 67.3 nm
 D50: 83.5 nm
 D90: 149.2 nm

Stats: Mean +/- Standard Error

Mean: 102.1 +/- 0.0 nm
 Mode: 74.3 +/- 0.0 nm
 SD: 45.1 +/- 0.0 nm
 D10: 67.3 +/- 0.0 nm
 D50: 83.5 +/- 0.0 nm
 D90: 149.2 +/- 0.0 nm
 Concentration: 1.88e+008 +/- 0.00e+000 particles/ml
 9.6 +/- 0.0 particles/frame
 10.2 +/- 0.0 centres/frame



Intensity / Size graph for Experiment:
sham2 2020-02-13 20-01-40

Script Used: (Full Text):

SOP Standard Measurement 08-00-13PM 13Feb2020.txt