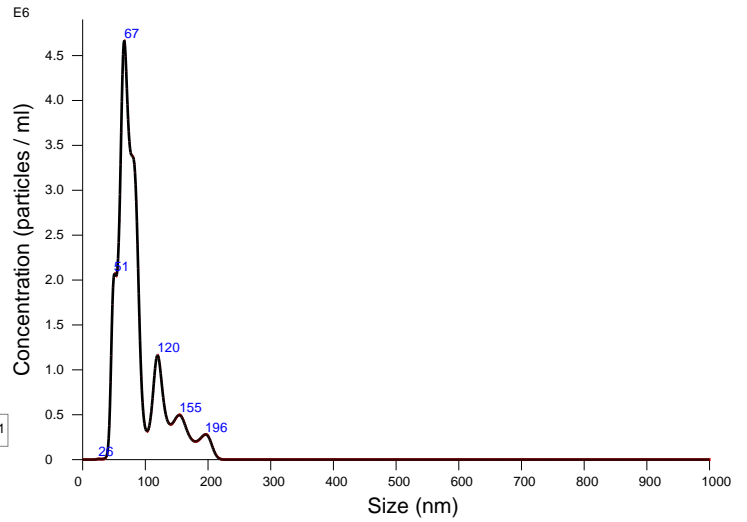


FTLA Concentration / Size graph for Experiment:
sham1-3 2020-02-21 18-31-29



Averaged FTLA Concentration / Size for Experiment:
sham1-3 2020-02-21 18-31-29
Error bars indicate + / -1 standard error of the mean

Included Files

sham1-3 2020-02-21 18-31-41

Details

NTA Version: NTA 3.2 Dev Build 3.2.16
 Script Used: SOP Standard Measurement 06-31-04PM 21~
 Time Captured: 18:31:29 21/02/2020
 Operator: Nakamura
 Pre-treatment:
 Sample Name: s1-3
 Diluent: 10000
 Remarks: Cam15

Capture Settings

Camera Type: sCMOS
 Laser Type: Blue488
 Camera Level: 15
 Slider Shutter: 1206
 Slider Gain: 366
 FPS: 25.0
 Number of Frames: 2997
 Temperature: 26.3 °C
 Viscosity: (Water) 0.9 cP
 Dilution factor: Dilution not recorded

Analysis Settings

Detect Threshold: 5
 Blur Size: Auto
 Max Jump Distance: Auto: 17.8 pix

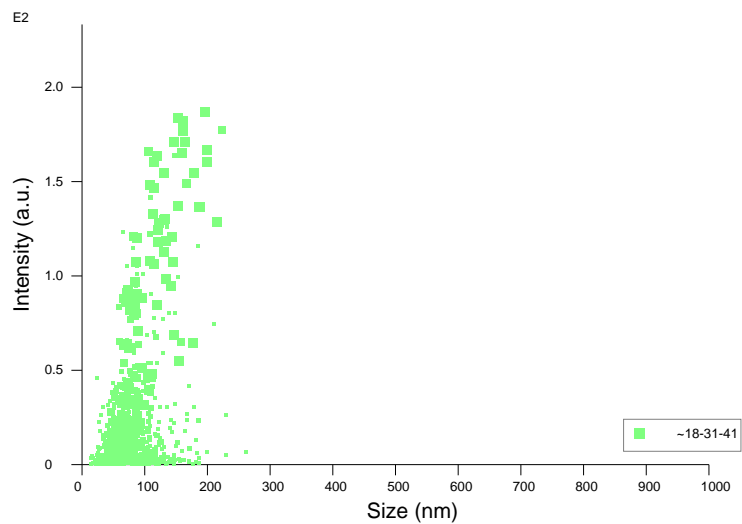
Results

Stats: Merged Data

Mean: 87.9 nm
 Mode: 66.3 nm
 SD: 36.2 nm
 D10: 53.3 nm
 D50: 75.0 nm
 D90: 144.6 nm

Stats: Mean +/- Standard Error

Mean: 87.9 +/- 0.0 nm
 Mode: 66.3 +/- 0.0 nm
 SD: 36.2 +/- 0.0 nm
 D10: 53.3 +/- 0.0 nm
 D50: 75.0 +/- 0.0 nm
 D90: 144.6 +/- 0.0 nm
 Concentration: 1.97e+008 +/- 0.00e+000 particles/ml
 10.0 +/- 0.0 particles/frame
 11.2 +/- 0.0 centres/frame



Intensity / Size graph for Experiment:
sham1-3 2020-02-21 18-31-29

Script Used: (Full Text):

SOP Standard Measurement 06-31-04PM 21Feb2020.txt