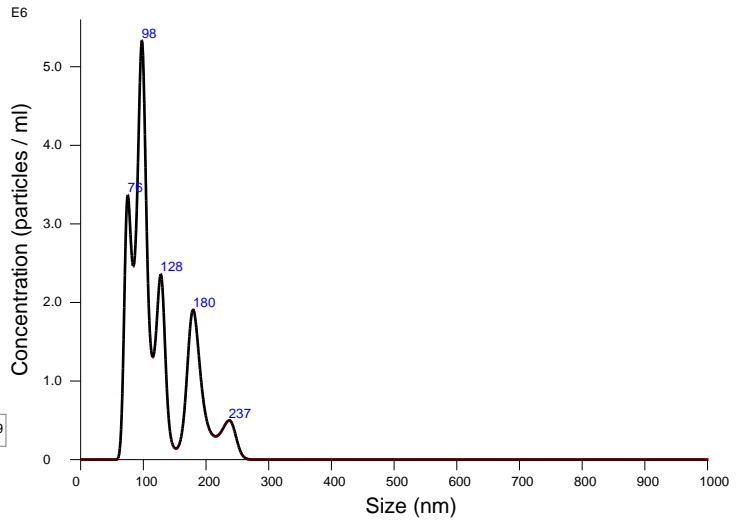


FTLA Concentration / Size graph for Experiment:  
sham1-1 2020-02-13 19-56-02



Averaged FTLA Concentration / Size for Experiment:  
sham1-1 2020-02-13 19-56-02  
Error bars indicate + / -1 standard error of the mean

### Included Files

sham1-1 2020-02-13 19-56-09

### Details

NTA Version: NTA 3.2 Dev Build 3.2.16  
 Script Used: SOP Standard Measurement 07-55-55PM 13~  
 Time Captured: 19:56:02 13/02/2020  
 Operator: Nakamura  
 Pre-treatment:  
 Sample Name: Sham1  
 Diluent: 50000  
 Remarks: Cam14

### Capture Settings

Camera Type: sCMOS  
 Laser Type: Blue488  
 Camera Level: 14  
 Slider Shutter: 1259  
 Slider Gain: 366  
 FPS: 25.0  
 Number of Frames: 1498  
 Temperature: 23.7 °C  
 Viscosity: (Water) 0.9 cP  
 Dilution factor: Dilution not recorded

### Analysis Settings

Detect Threshold: 5  
 Blur Size: Auto  
 Max Jump Distance: Auto: 9.2 pix

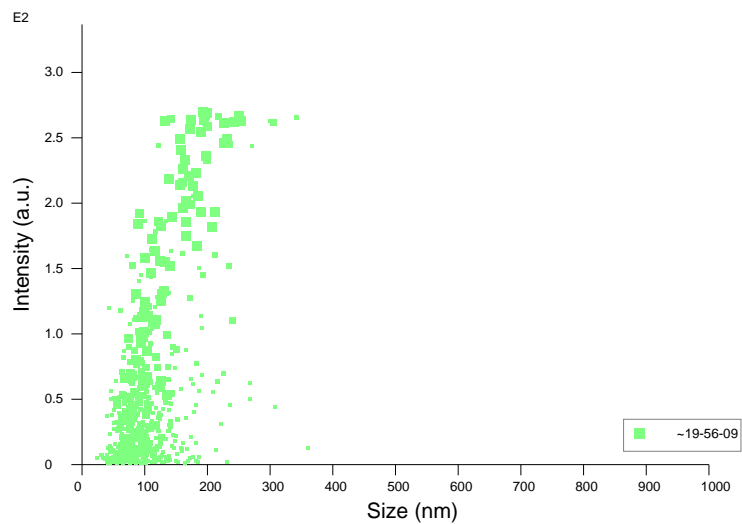
### Results

Stats: Merged Data

Mean: 124.2 nm  
 Mode: 97.7 nm  
 SD: 46.5 nm  
 D10: 75.4 nm  
 D50: 104.2 nm  
 D90: 191.2 nm

Stats: Mean +/- Standard Error

Mean: 124.2 +/- 0.0 nm  
 Mode: 97.7 +/- 0.0 nm  
 SD: 46.5 +/- 0.0 nm  
 D10: 75.4 +/- 0.0 nm  
 D50: 104.2 +/- 0.0 nm  
 D90: 191.2 +/- 0.0 nm  
 Concentration: 2.64e+008 +/- 0.00e+000 particles/ml  
 13.4 +/- 0.0 particles/frame  
 13.9 +/- 0.0 centres/frame



Intensity / Size graph for Experiment:  
sham1-1 2020-02-13 19-56-02

**Script Used: (Full Text):**

SOP Standard Measurement 07-55-55PM 13Feb2020.txt