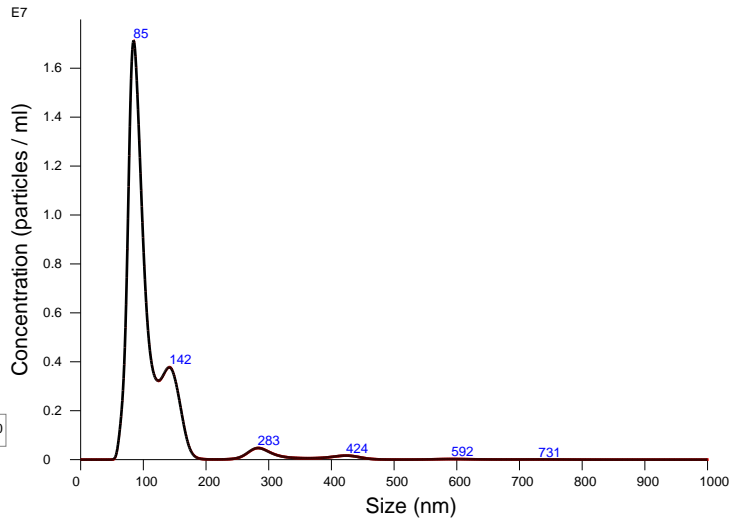


FTLA Concentration / Size graph for Experiment:
msc2 2020-02-13 20-14-30



Averaged FTLA Concentration / Size for Experiment:
msc2 2020-02-13 20-14-30
Error bars indicate + / - 1 standard error of the mean

Included Files

msc2 2020-02-13 20-14-40

Details

NTA Version: NTA 3.2 Dev Build 3.2.16
 Script Used: SOP Standard Measurement 08-14-02PM 13~
 Time Captured: 20:14:30 13/02/2020
 Operator: Nakamura
 Pre-treatment:
 Sample Name: msc2
 Diluent: 50000
 Remarks: Cam14

Capture Settings

Camera Type: sCMOS
 Laser Type: Blue488
 Camera Level: 14
 Slider Shutter: 1259
 Slider Gain: 366
 FPS: 25.0
 Number of Frames: 1498
 Temperature: 24.4 °C
 Viscosity: (Water) 0.9 cP
 Dilution factor: Dilution not recorded

Analysis Settings

Detect Threshold: 5
 Blur Size: Auto
 Max Jump Distance: Auto: 10.0 pix

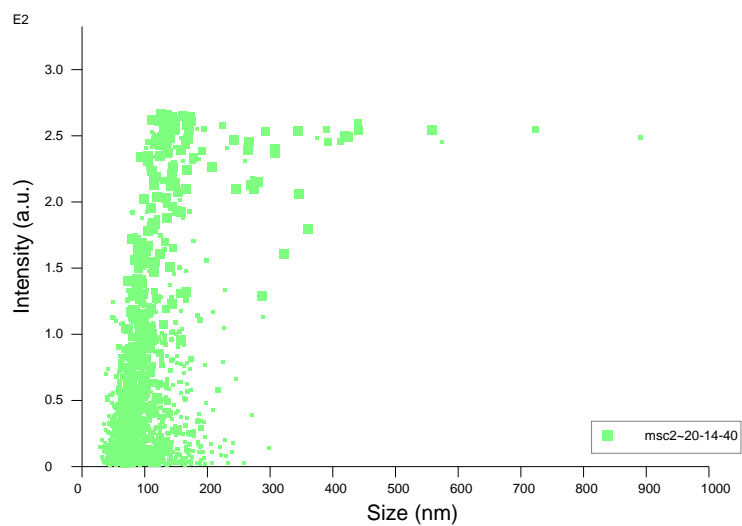
Results

Stats: Merged Data

Mean: 115.5 nm
 Mode: 84.5 nm
 SD: 66.4 nm
 D10: 75.4 nm
 D50: 93.7 nm
 D90: 154.1 nm

Stats: Mean +/- Standard Error

Mean: 115.5 +/- 0.0 nm
 Mode: 84.5 +/- 0.0 nm
 SD: 66.4 +/- 0.0 nm
 D10: 75.4 +/- 0.0 nm
 D50: 93.7 +/- 0.0 nm
 D90: 154.1 +/- 0.0 nm
 Concentration: 6.93e+008 +/- 0.00e+000 particles/ml
 35.2 +/- 0.0 particles/frame
 35.6 +/- 0.0 centres/frame



Intensity / Size graph for Experiment:
msc2 2020-02-13 20-14-30

Script Used: (Full Text):

SOP Standard Measurement 08-14-02PM 13Feb2020.txt