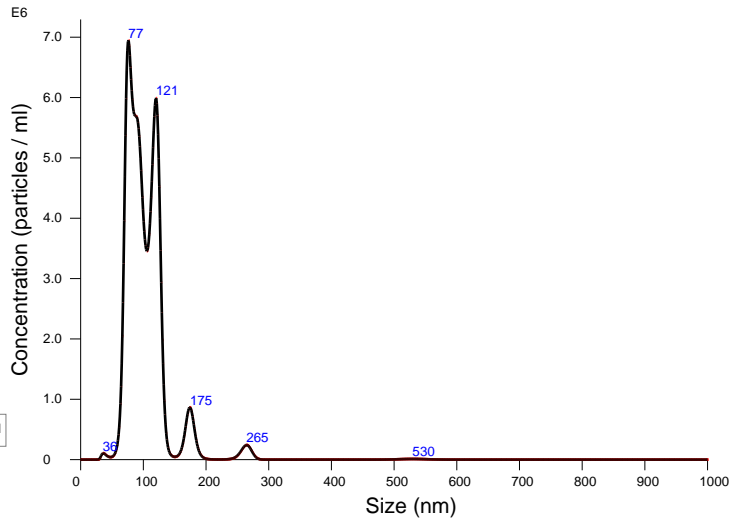


FTLA Concentration / Size graph for Experiment:
m3 2020-02-21 19-44-30



Averaged FTLA Concentration / Size for Experiment:
m3 2020-02-21 19-44-30
Error bars indicate + / -1 standard error of the mean

Included Files

m3 2020-02-21 19-44-41

Details

NTA Version: NTA 3.2 Dev Build 3.2.16
 Script Used: SOP Standard Measurement 07-43-59PM 21~
 Time Captured: 19:44:30 21/02/2020
 Operator: Nakamura
 Pre-treatment:
 Sample Name: m3
 Diluent: 10000
 Remarks: Cam15

Capture Settings

Camera Type: sCMOS
 Laser Type: Blue488
 Camera Level: 15
 Slider Shutter: 1206
 Slider Gain: 366
 FPS: 25.0
 Number of Frames: 2997
 Temperature: 26.6 °C
 Viscosity: (Water) 0.9 cP
 Dilution factor: Dilution not recorded

Analysis Settings

Detect Threshold: 5
 Blur Size: Auto
 Max Jump Distance: Auto: 11.5 pix

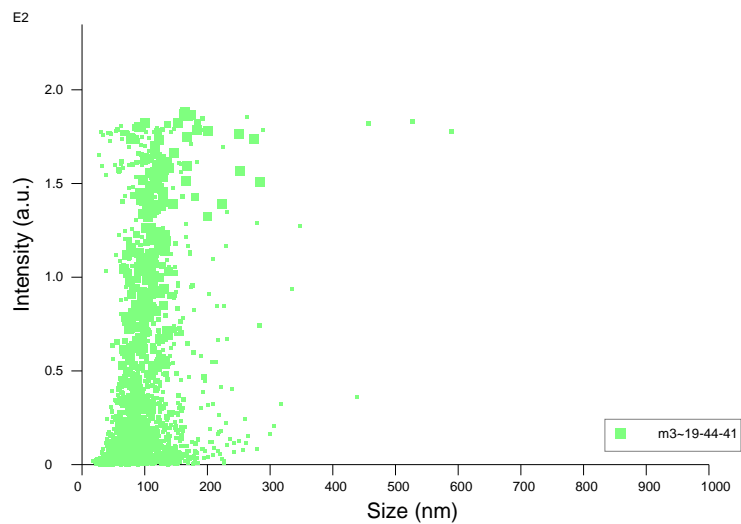
Results

Stats: Merged Data

Mean: 103.6 nm
 Mode: 76.2 nm
 SD: 36.5 nm
 D10: 71.9 nm
 D50: 95.7 nm
 D90: 127.5 nm

Stats: Mean +/- Standard Error

Mean: 103.6 +/- 0.0 nm
 Mode: 76.2 +/- 0.0 nm
 SD: 36.5 +/- 0.0 nm
 D10: 71.9 +/- 0.0 nm
 D50: 95.7 +/- 0.0 nm
 D90: 127.5 +/- 0.0 nm
 Concentration: 3.55e+008 +/- 0.00e+000 particles/ml
 18.0 +/- 0.0 particles/frame
 21.8 +/- 0.0 centres/frame



Intensity / Size graph for Experiment:
m3 2020-02-21 19-44-30

Script Used: (Full Text):

SOP Standard Measurement 07-43-59PM 21Feb2020.txt