

Reliance at a Glance

REsearch Lifecycle mAnagement technologies for Earth Science Communities and CopErnicus users in EOSC

- RELIANCE seeks to **extend the EOSC's capabilities** with an enhanced support for **research activities** through a set of industry-strong, innovative, **interconnected services**, and in alignment with the **EOSC Interoperability Framework**.
- Adopting a holistic research mgmt. approach, it will **enhance the discovery** of and access to research data/results (incl. **Copernicus** data), improve the **extraction** of relevant information, **managing the research lifecycle** while promoting **FAIR and open science** principles.
- It will pilot and demonstrate its services' value via **3 Earth Science communities** and others engaged via an **Open Call**, fostering the use of **Copernicus data**, with the final aim to enhance EOSC support for **multidisciplinary** research and to improve EU science as a whole

2 Million Euro (EC Grant)

24 Months

Officially started January 2021

Reliance Service portfolio

Research Lifecycle Management Ecosystem Pillars

- **Research Objects** as the overarching mechanism to manage scientific research activities and connect associated resources



- **Data Cubes** for efficient and scalable structured data access and discovery

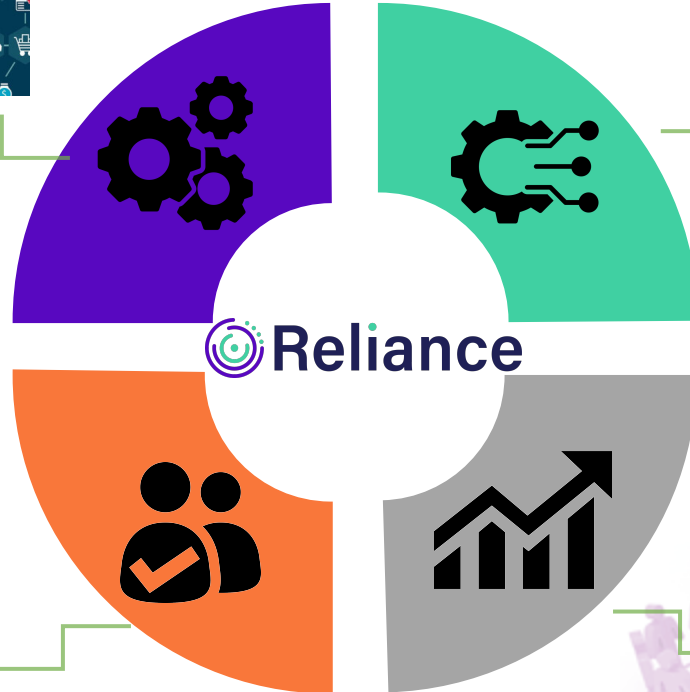
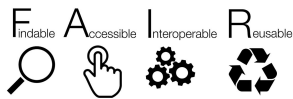
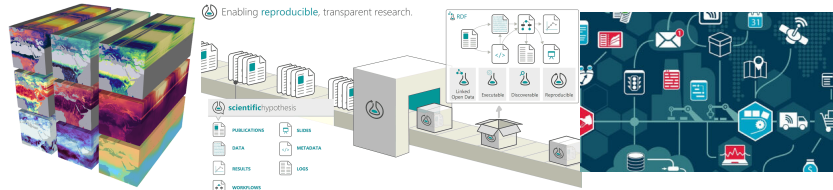


- **Text mining** services to extract machine-readable metadata from RO resources enabling researchers to discover scientific information at scale and to structure their own research.



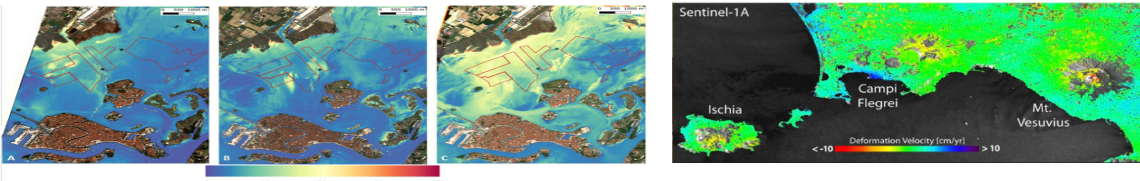
Reliance Objectives

Provision of suite of services for Research Lifecycle Mgmt.



Demonstration & community engagement

Demonstrate the services and value proposition



EOSC integration and extension

Integration and onboarding of Reliance services in EOSC, leveraging and connecting with other complementary EOSC services



Increase Copernicus and EOSC impact

Foster the adoption of Copernicus data and EOSC services in such scientific communities



Project Partners

Consortium at a glance

- 9 partners from 5 European countries
- 3 research communities
- 5 technical partners: 3 RO, 2 TM, 2 EO
- 4 industry partners



<https://www.psnc.pl/>

coordinator



POLITÉCNICA

UNIVERSIDAD
POLITÉCNICA
DE MADRID

www.oeg-upm.net



<https://www.expert.ai/>



ISTITUTO NAZIONALE
DI GEOFISICA E VULCANOLOGIA
<http://www.ingv.it/>



<http://www.ismar.cnr.it/>



<https://www.meeo.it/>

TERRADUE

<https://www.terradue.com/>

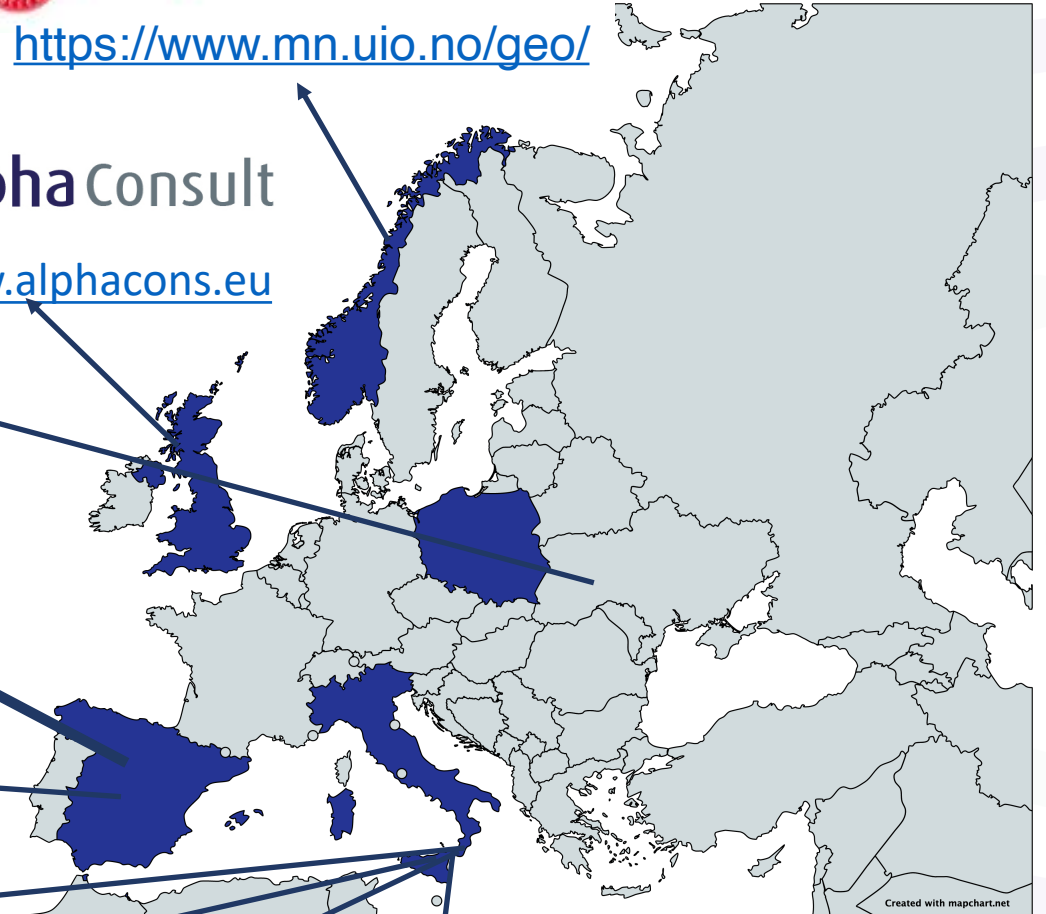


UiO : Universitetet i Oslo

<https://www.mn.uio.no/geo/>

Alpha Consult

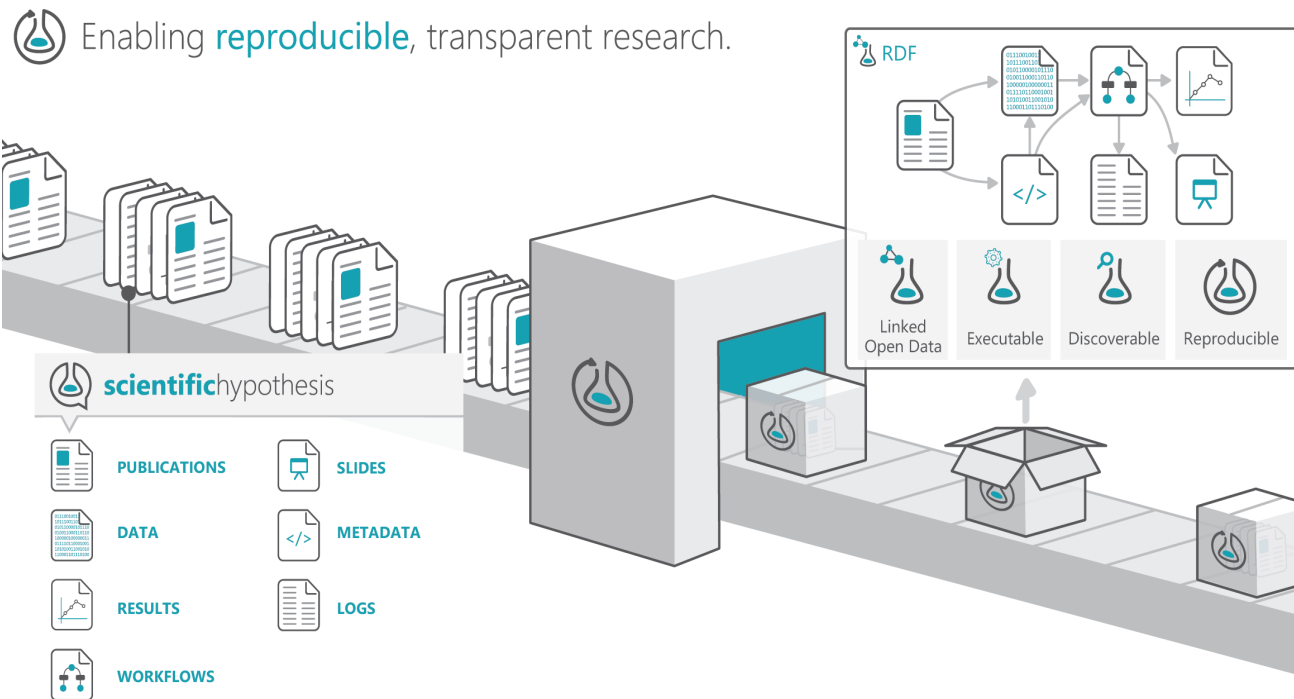
<https://www.alphacons.eu>



Created with mapchart.net

Research Objects - overview

Goal: Account, describe and share *everything* about your research, including how those things are related



<http://www.researchobject.org>

- **Unique identifier**, e.g. DOI
- **Hypotheses**
- **Data** used and results produced
- **Methods** employed to produce and analyse data
- **Scientific workflows** implementing such methods
- **Provenance** of their executions
- **Versioning** information
- **People** involved in the investigation
- **Annotations** about these resources



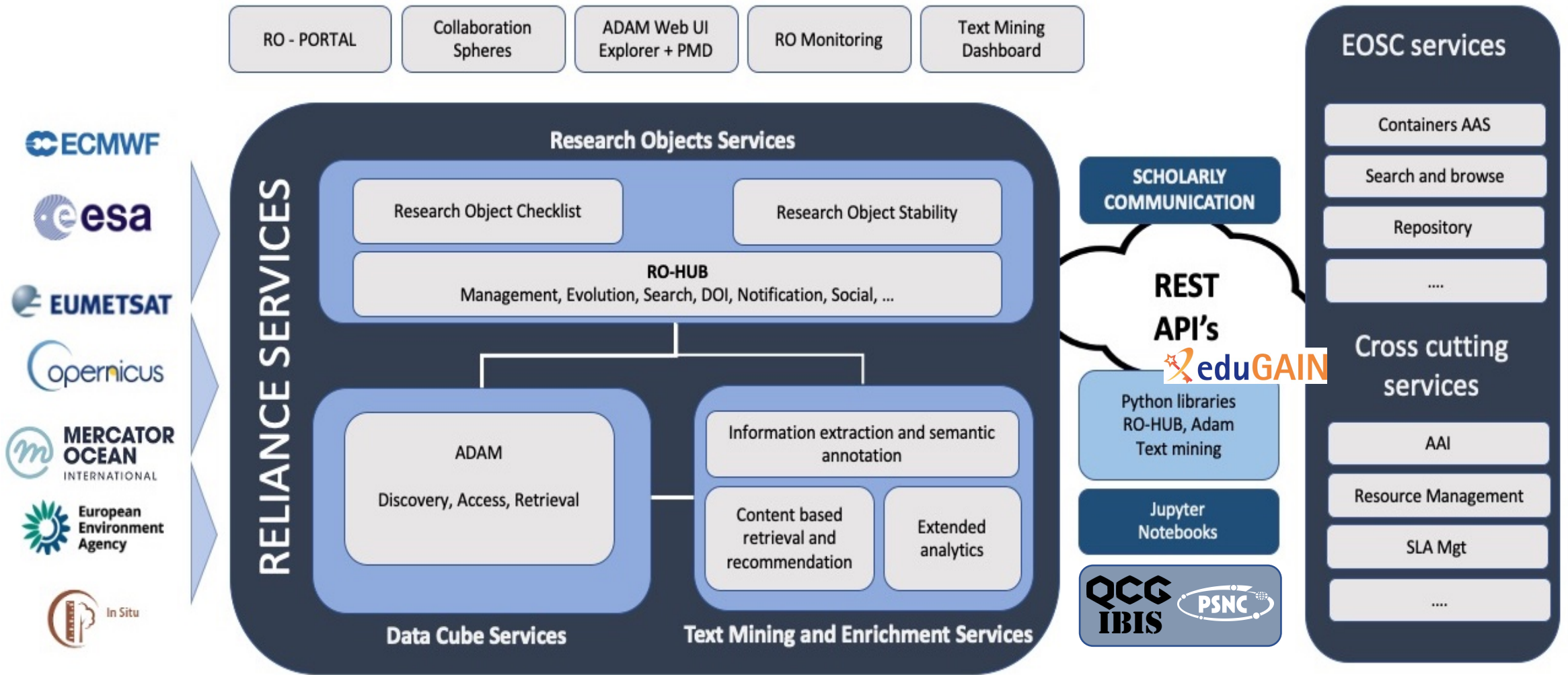
ROHUB



everest

Reliance

Service logic interconnection



EOSC complementarity

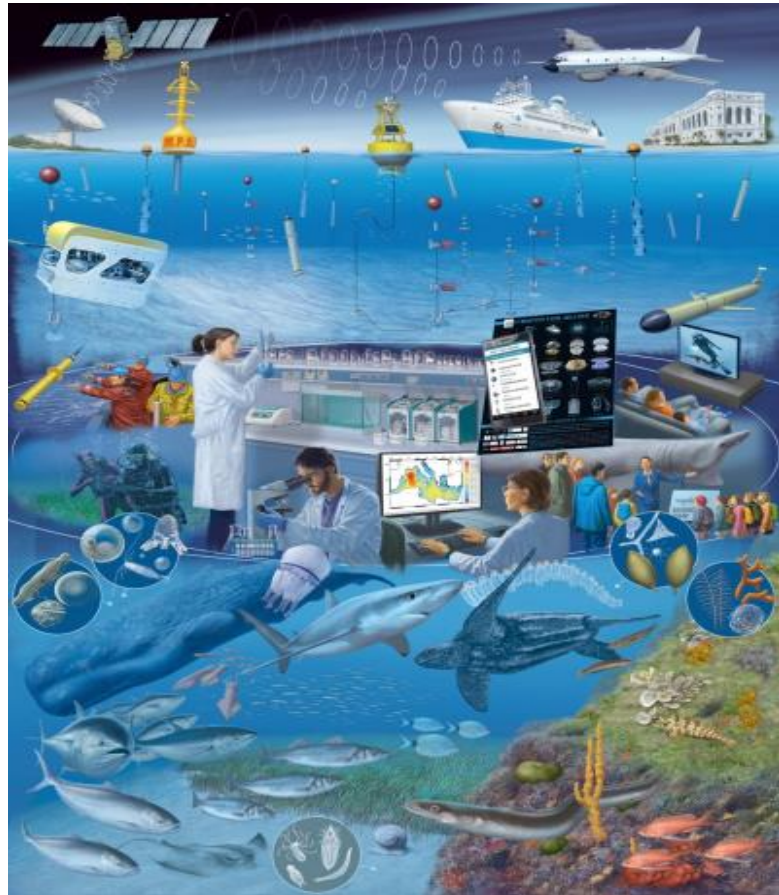
Reliance services would act as a bridge between various EOSC services, acting at a higher level and connecting e.g.,

- Data used by researchers, e.g., DC for Copernicus data and other datasets available from EOSC (e.g., B2Share , EGI DataHub),
- Methods used to process such data (e.g., via EGI Jupyter notebooks)
- Research Infrastructures (RI) used for research (to monitor their impact)
- Results published via scholarly communication services (e.g., Zenodo/OpenAire).
- RO snapshot/releases also published to EOSC repositories or scholarly communication platforms (e.g., B2Share, Zenodo)



Source: <https://www.the-waves.org/2020/09/29/technology-transfer-for-development-myth/>

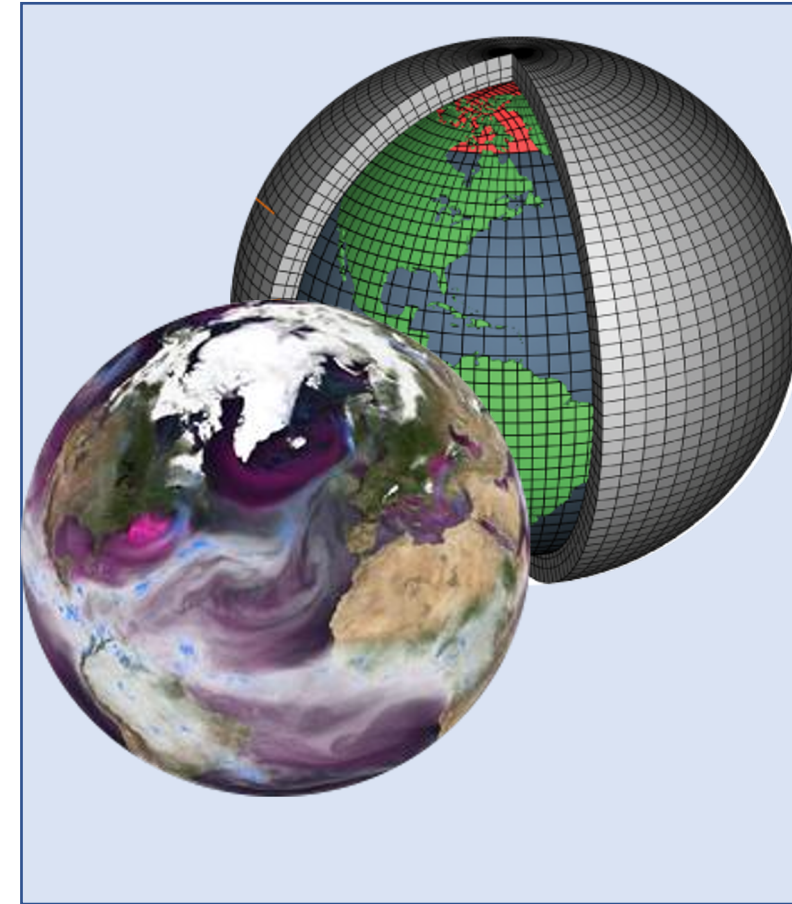
Sea Monitoring



Geohazard



Atmospheric and climate modelling



The multi & inter disciplinary use cases will showcase how RELIANCE services can support researchers & promote the cooperation among scientists in Earth Science, but the services may be adapted to any other research domain!

Thank you!

Visit us: <https://www.reliance-project.eu/>

Contact us: info@reliance-project.eu



[reliance_eosc](https://twitter.com/reliance_eosc)



[reliance-project](https://www.linkedin.com/company/reliance-project)