

## Portfolio **DISCOVER**

Brief presentation of the three OpenAIRE services that assist researchers to discover research, through the help of content providers.

Service : **EXPLORE Discovery service**, Katerina Iatropoulou (Athena RC)

Service : **Research Community Dashboard**, Alessia Bardi (CNR-ISTI)

Service : **PROVIDE Dashboard**, Pedro Principe (Univ. of Minho)



Katerina Iatropoulou  
ATHENA RC



# Discover the OpenAIRE Research Graph

# Overview of OpenAIRE EXPLORE

- OpenAIRE EXPLORE is the OpenAIRE **search portal** for **Open Access** scholarly works **globally**
  - **Website:** <https://explore.openaire.eu>
  - **585,707** unique **visitors** (2020)
- **Accessible via OpenAIRE APIs**
  - <https://develop.openaire.eu>
  - **25,032,211** unique **pageviews** (2020)
- **Open and free for everyone**
  - Free registration
  - Certain functionalities accessible only to registered users
  - APIs have better rate limits for authenticated requests

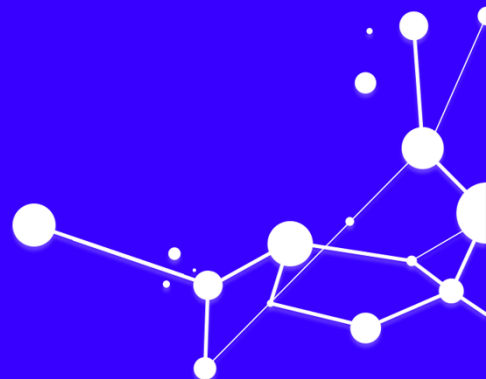
# Why to use OpenAIRE EXPLORE by whom

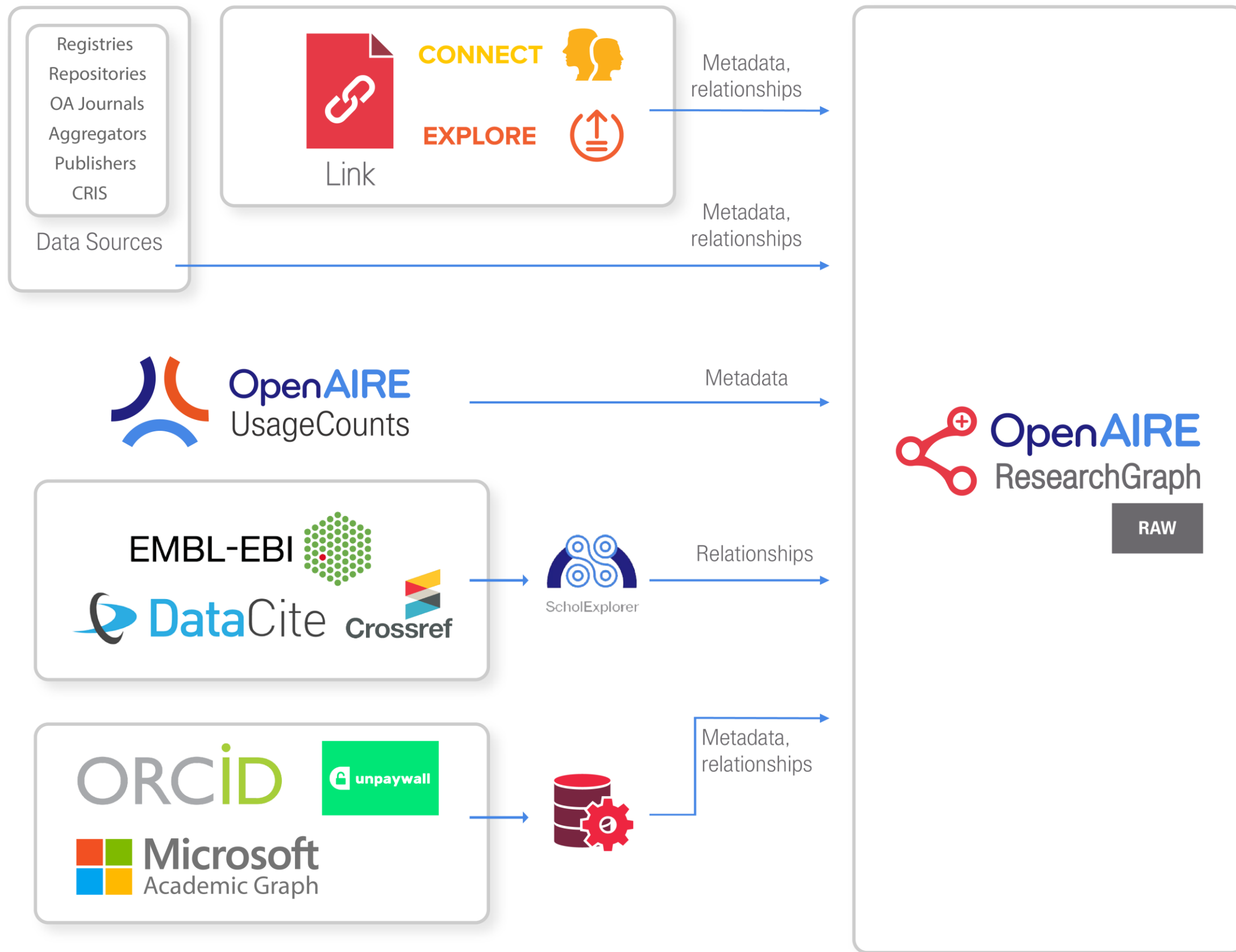
- **It enables research discovery, for all**, making open access research accessible in Europe and beyond. OpenAIRE EXPLORE users can:
  - **query and navigate** the OpenAIRE Research Graph
  - **claim** semantic links between OpenAIRE Research Graph entities
- OpenAIRE EXPLORE is **ideal** for:
  - Researchers
  - Research Communities
  - Project Managers
  - Funders
  - Content Providers

# How to use OpenAIRE EXPLORE

- **Visit and navigate** the OpenAIRE Explore **portal**
  - <https://explore.openaire.eu>
- Make requests to the **OpenAIRE APIs**
  - <https://develop.openaire.eu>
- Authenticate through **EOSC partners accounts**

# Positioning in EOSC & OpenAIRE Ecosystem





**EUROPEAN OPEN SCIENCE CLOUD**  
**eprints** repository software  
**DSPACE**

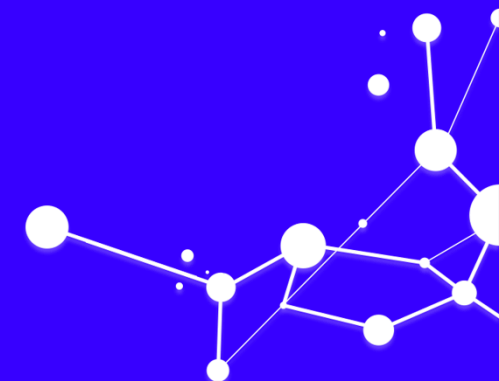
- CONNECT
- EXPLORE
- DEVELOP





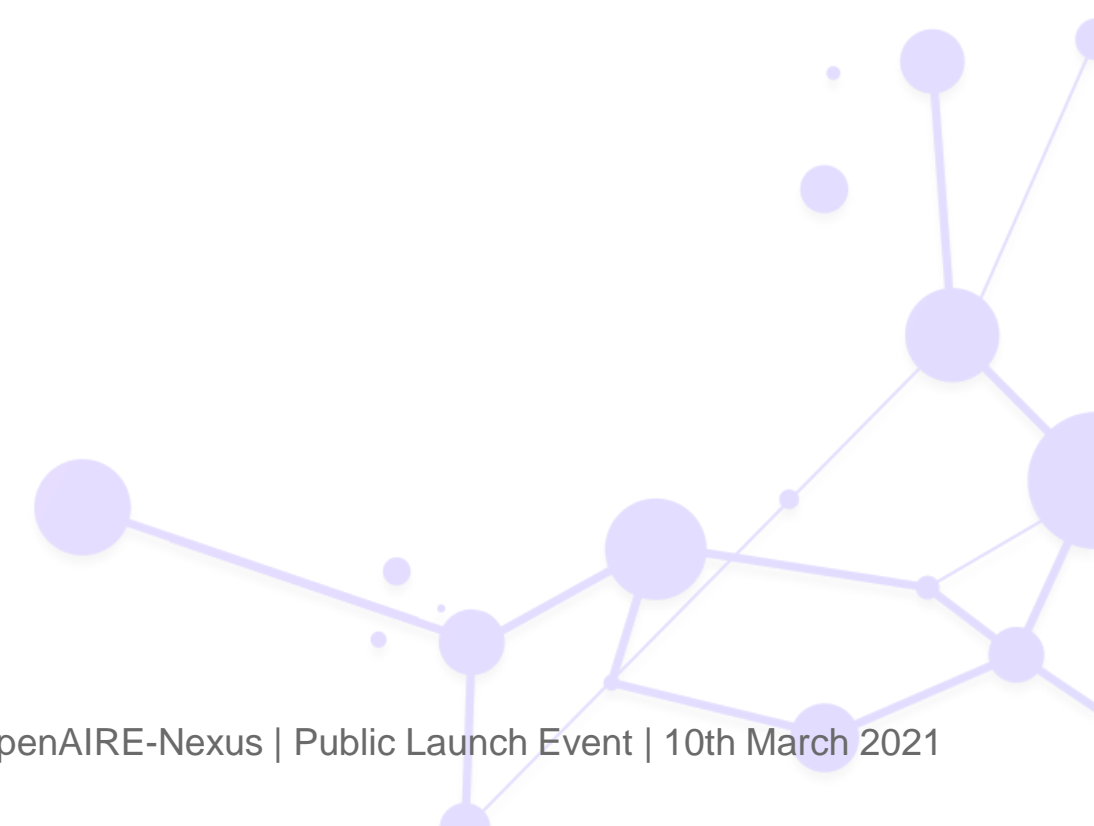
**Gives EOSC users access and enhancement functionalities to EOSC resources**

Take away



# Takeaway

- Use **EXPLORE** Discovery services to find open scholarly works



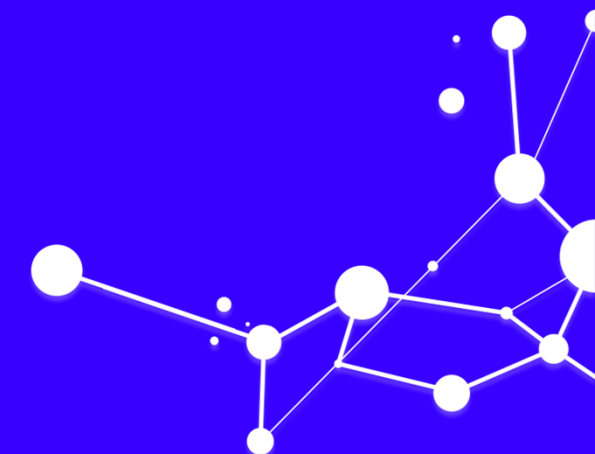


@openaire\_eu  
#OpenAIRE-Nexus

THANK YOU

**Katerina Iatropoulou**

kiatrop@athenarc.gr





**Alessia Bardi**  
**ISTI - CNR**



Build an Open Research Gateway for your  
community

# Overview of the OpenAIRE Research Community Dashboard

- A **service** that delivers **on-demand Open Research Gateways** for **research communities**
  - Each gateway offers a “community view” of the OpenAIRE Research Graph and tools to support the implementation of Open Science publishing practices
- **Web-based, domain-specific GUI, free at the point of access**
- **Currently serving 11 communities** (9 public gateways, 2 under configuration)

# Why to use OpenAIRE RCD by whom

- It **lowers** the barriers that hinder the adoption of **Open Science publishing practices** in the research community
  - Discovery in the literature and data deluge
  - Dispersion of research products
  - Lack of community awareness
  - Lack of Open Science publishing services and tools
- It is part of a larger **Open Science ecosystem (EOSC)**, and will add value to EOSC users by supporting **community building, strengthening and empowering**
- It is unique since the community curators have **full control** on the configuration of their gateways in terms of content, functionality and look & feel
- Is ideal for **Research communities**

# How to use OpenAIRE RCD

- The RCD and all public community gateways are accessible
  - Through the **CONNECT** web portal (<https://connect.openaire.eu>)
  - Through the **EOSC portal** interconnected catalogue of data and services (via AAI)



# How to request a gateway for your community

## Contact us to learn more

\*Required fields

Name \*

Your name

Surname \*

Your surname

Email \*

Preferably your work email

Affiliation \*

Your affiliation

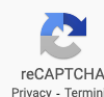
Research Community or Infrastructure \*

Your community name

Message \*

Your message

Non sono un robot



reCAPTCHA  
Privacy - Termini

SEND

OpenAIRE gives you the virtual environment and services designed for your community to:

Create and Manage your Community Gateway

Access, share and link together all your research

Monitor and report your community's progress

## Learn the process.

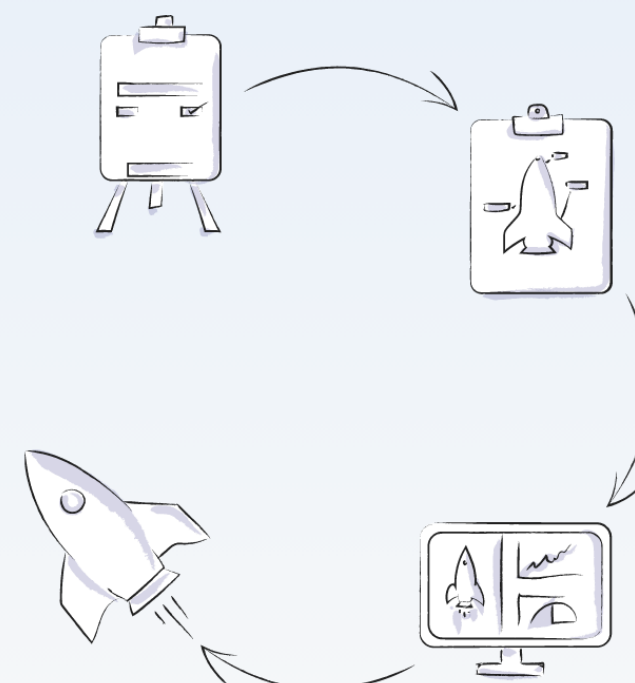
Build a Gateway to your community's open and linked research outcomes. Customized to your needs.

### 1. Understanding your needs

First, we learn about your requirements and challenges. We help you understand Open Science practices within EOSC and together we'll talk about how OpenAIRE RCD fits as a solution.

### 4. Roll out the service

We jointly roll out your new Community Gateway. You take over the business operations and start engaging your researchers, we take care of the smooth operation of the e-service.



### 2. Develop a pilot

How do you work today, and how would you like to work tomorrow? We translate your needs into rules and processes and we configure operational OpenAIRE services. By the end of this phase, we'll have defined the basic configuration of your Community Gateway.

### 3. Test and Validate

You validate and test your new Community Gateway (portal) with your experts and community to ensure all workflows are in place and quality of data meets your standards. If needed, we work together in another iteration to further refine and adapt to your needs.

# How to configure your community gateway

The screenshot shows a web interface for configuring a community gateway. At the top left is the 'COVID-19 linked data' logo. The top right has a dark blue header with the word 'OVERVIEW'. A left sidebar contains a navigation menu with categories: 'COMMUNITY CONTENT' (PROJECTS, CONTENT PROVIDERS, SUBJECTS, ZENODO COMMUNITIES), 'ENTITIES & PAGES' (ACTIVATE ENTITIES, PAGES, SEARCH, LINK, SHARE, LANDING, OTHER), 'HELP TEXTS' (PAGE HELP TEXTS), 'STATISTICS & CHARTS', 'LINKS', and 'USERS' (INVITE TO SUBSCRIBE, SUBSCRIBERS). The main content area is a grid of six configuration cards:

- Profile**: Edit community information, change logo url, add community managers or organizations related to community. Includes links for 'COMMUNITY PROFILE' and 'ORGANIZATIONS'.
- Content**: Manage projects, content providers, subjects and zenodo communities that are related to the research community. Includes links for 'PROJECTS', 'CONTENT PROVIDERS', 'ZENODO COMMUNITIES', and 'SUBJECTS'.
- Statistics & Charts**: Manage statistical numbers & charts that will be displayed in the community overview and graph analysis views. Includes a link for 'STATISTICS & CHARTS'.
- Links**: Manage user claims related to the research community. Includes a link for 'LINKS'.
- Help texts**: Add or edit help text in research community pages. Includes a link for 'HELP TEXTS IN PAGES'.
- Users**: Invite more users to subscribe, manage community subscribers, your personal info and notification settings. Includes links for 'INVITE TO SUBSCRIBE', 'SUBSCRIBERS', 'PERSONAL INFO', and 'NOTIFICATION SETTINGS'.

# How to use your community gateway

COVID-19 linked data

DEPOSIT LINK SEARCH ABOUT MANAGE AB

Research outcomes Search by title, author, abstract, DOI, orcid... SEARCH Advanced Search

SUMMARY	PUBLICATIONS	RESEARCH DATA	SOFTWARE	OTHER RESEARCH
	238,397	8,557	857	11,021

This portal provides access to publications, research data, projects and software that may be relevant to the Corona Virus Disease (COVID-19). The OpenAIRE COVID-19 Gateway aggregates COVID-19 related records, links them and provides a single access point for discovery and navigation. We tag content from the OpenAIRE Research Graph (10,000+ data sources) and additional sources. All COVID-19 related research results are linked to people, organizations and projects, providing a contextualized navigation.

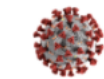
Curated by: Alessia Bardi, Iryna Kuchma, Evgeny Bobrov, Ivana Truccolo, Elizabete Monteiro, carlotta casalegno, Erin Clary, Andrew Romanowski, Abiodun Ogunbiyi, M\*Eugenia Saéz Goñi [View less curators](#)

Created: 16-Mar-2020 Members: 48  
Projects: 130 Content Providers: 15  
Linked to 7 Zenodo Communities

Subjects  
COVID19, SARS-CoV, HCoV-19, mesh:C000657245, MERS-CoV, Síndrome Respiratorio Agudo Severo, mesh:COVID-19, COVID2019, COVID-19, SARS-CoV-2, 2019 novel coronavirus, severe acute respiratory syndrome coronavirus 2, Orthocoronavirinae, Coronaviridae, mesh:D045169, coronavirus, SARS, coronaviruses, coronavirus disease-19, sars cov 2 [View all](#)

## Deposit in Zenodo

Main Zenodo community



Coronavirus Disease Research Community - COVID-19  
last update: 2021/02/23

NEW UPLOAD →

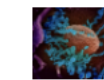
This community collects research outputs that may be relevant to the Coronavirus Disease (COVID-19) or the SARS-CoV-2. Scientists are encouraged to upload their outcome in this collection to facilitate sharing and discovery of information. Although Open Access articles and datasets are recommended, also closed and restricted access material are accepted. All types of research outputs can be included in this Community (Publication, Poster, Presentation, Dataset, Image, Video/Audio, Software, Lesson, Other).

Other related Zenodo communities (6)



Statistical reviews for clinical trials testing treatments for COVID-19  
last update: 2020/03/31

NEW UPLOAD →



Chicago COVID-19 Response  
last update: 2020/04/02

NEW UPLOAD →

This repository community collects research outputs and information objects relevant to the COVID-19 / SARS-CoV-2 efforts in Chicago. Users are encouraged to upload their research objects in this collection to facilitate sharing and discovery of information.

Although Open Access articles and datasets are recommended, closed and restricted access material are also accepted. All types of research outputs and information objects can be included in this repository community.

PLEASE DO NOT DEPOSIT FILES CONTAINING PROTECTED HEALTH INFORMATION (PHI).



COVID-19 Panama research  
last update: 2020/04/27

NEW UPLOAD →

Esta comunidad tiene el objetivo de compilar los datos de investigación generados a través de los hallazgos de investigadores panameños relacionado al SARS-CoV2/COVID-19. La presente comunidad es una iniciativa de la Plataforma de Acceso a Bibliografía Científica (Plataforma ABC) de la Secretaría Nacional de Ciencia, Tecnología e Innovación de la República de Panamá (SENACYT), en colaboración con La Red Federada de Repositorios Institucionales de Publicaciones Científicas (LA Referencia).

This community aims to collect research data generated through the findings of Panamanian researchers related to SARS-CoV2/COVID-19.

This community is an initiative of the Plataforma de Acceso a Bibliografía Científica (Plataforma ABC) [Platform for Access to Scientific Bibliography (Platform ABC)] of the Secretaría Nacional de Ciencia, Tecnología e Innovación (National Secretariat of Science, Technology and Innovation (SENACYT)) of the Panama Republic in collaboration with La Red Federada de Repositorios Institucionales de Publicaciones Científicas (LA Referencia).



Living mapping and living network meta-analysis of Covid-19 studies  
last update: 2020/04/27

NEW UPLOAD →

This community collects outputs of our living mapping of ongoing research related to Covid-19.

We will perform a living mapping of ongoing randomized trials, followed by living systematic reviews with pairwise meta-analyses and when possible, network meta-analyses focusing on

COVID-19 linked data

DEPOSIT LINK SEARCH ABOUT MANAGE AB

### ADD LINKING SOURCES

Start searching Research Outcomes and add them to the Basket to Link

Search for research outcomes... SEARCH

No research outcomes yet...  
Start searching for research outcomes to add them in the Basket

Start linking  
Learn more

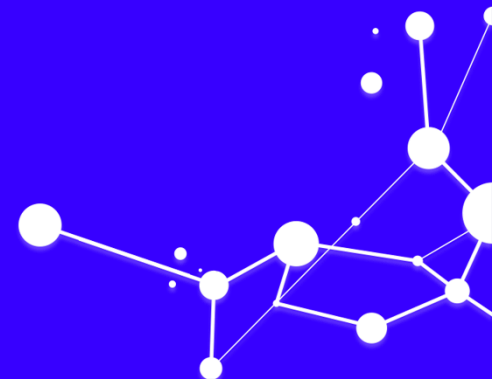
SOURCES (0)  
Research results to link

Upload a DOI's CSV file ⓘ

No Sources added yet. Start adding sources from the left panel. Or upload a DOI's CSV file.

CONTINUE TO - LINK TO  
Entities to link with the sources

# Positioning in EOSC & OpenAIRE Ecosystem



Research Community Dashboard



Community Gateway

Gateway configuration

Identify research products of the community

January 14, 2021

OpenAIRE Covid-19 publications, datasets, software and projects metadata.

6,688 views | 573 downloads

<https://doi.org/10.5281/zenodo.3980490>

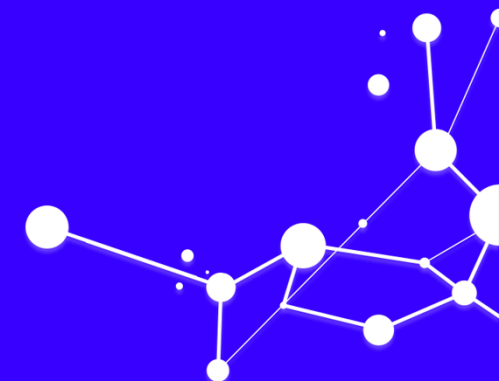
January 14, 2021

OpenAIRE Research Graph: Dumps for research communities and initiatives.

352 views | 172 downloads

<https://doi.org/10.5281/zenodo.4439644>

Take away





# Takeaway

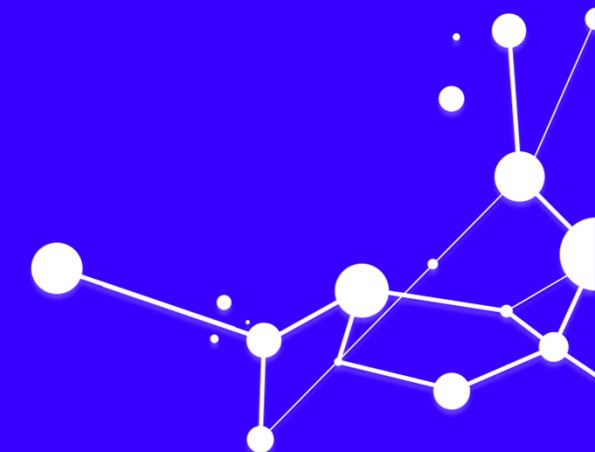
- The Research Community Dashboard is the OpenAIRE service that delivers **configurable** Open Research Gateways for research communities
- It is the service by which OpenAIRE supports **community building, strengthening and empowering**



@openaire\_eu  
#OpenAIRE-Nexus

THANK YOU

**Alessia Bardi**  
alessia.bardi@isti.cnr.it







**Pedro Principe**  
University of Minho



**Provide Dashboard is a one-stop-shop web service where content providers interact with OpenAIRE**

# Overview of OpenAIRE Provide Dashboard

## Validate

The **Validator** service allows to test your data source compatibility with the **OpenAIRE Guidelines**.

## Register

If validation succeeds the data source can be **registered for regular aggregation** and indexing in OpenAIRE.

## Collection monitor

Collection monitor provides the **aggregation history**. Track the aggregation stage, collection mode and the number of records aggregated.

## Enrich

Improve your metadata. Get more connections. **OA Broker service** offers a wealth of information. Find out what interests you and subscribe to enrich your records.

## Measure

Share usage data via OpenAIRE's global **Metrics Service – usage counts**. Get the benefit of an aggregated environment.

## Notifications

Once registered in OpenAIRE, content providers are able to use the Provide functionalities and to **get notifications & alerts** (enrichments, errors, useful info).

# Why to use Provide Dashboard by Whom

Front-end access to many of OpenAIRE's backend services targeting content providers.

## □ TARGET USERS:

Repository managers (literature, data), data archives managers, CRIS systems managers, OA journals editors, libraries, national aggregators.

## □ USER BASE:

Over 1500 content providers.

## □ USER VALUE:

Improve repository collections and content for enhanced visibility and access. Improved repository interoperability. Improved institution memory. Better institution research assessment. Compliance to funder rules.

# How to use Provide Dashboard

- ✓ **Free to register and use** – learn about the service functionalities and use the validator and the registration.
- ✓ **Once registered in OpenAIRE**, the data source managers are able to access the broker events, subscribe and refine metadata enrichments, receive notifications, enable usage counts service and track the aggregation activity.

Register your datasource

Literature repository

Data repository

Journal

Aggregator

Enrich Your Content - Browse Events

For each topic a sample of 100 events will be displayed, as well as the total number that can be potentially built for your data source. If you are interested to receive the full list, you can subscribe to these events and then be notified about the new enrichment events.

More	# OF EVENTS	Missing	# OF EVENTS
ADDITIONAL METADATA INFORMATION THAT MAY ENRICH OR SUPPLEMENT UNIVERSIDADE DO MINHO: REPOSITORY CONTENT		MISSING METADATA INFORMATION THAT MAY ENRICH OR COMPLETE UNIVERSIDADE DO MINHO: REPOSITORY CONTENT	
<a href="#">ENRICH/MORE/OPENACCESS_VERSION</a> Another Open Access version of a publication	134629	<a href="#">ENRICH/MISSING/OPENACCESS_VERSION</a> An Open Access versions of your publications	134629
<a href="#">ENRICH/MORE/PID</a> Another persistent identifier associated to your publications	23006	<a href="#">ENRICH/MISSING/AUTHOR/ORCID</a> An Open Researcher and Contributor ID (ORCID) that can be associated to an author of your publications	11535
<a href="#">ENRICH/MORE/SUBJECT/ARXIV</a> Another ARXIV classification term that can be associated to your publications	558	<a href="#">ENRICH/MISSING/PROJECT</a> A project reference that can be associated to your publications	624

- R Register
- V Validator
- N Notifications

Records collected on  
2020-07-07  
**64,003**

Enrichments  
**305,882**

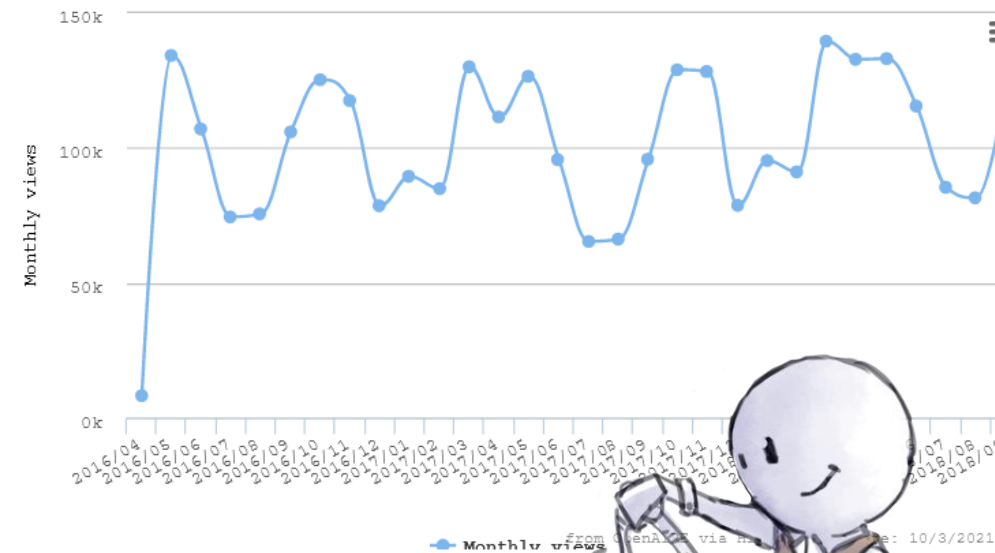
Downloads  
**659,436**

Views  
**530**

### Aggregation History

- 2021-03-03  
Aggregation stage  
TRANSFORM  
Number of records  
23,418
- 2021-03-03  
Aggregation stage  
COLLECT  
Collection mode  
REFRESH  
Number of records  
68,616
- 2021-02-16  
Aggregation stage  
TRANSFORM  
Number of records  
23,341

### Usage Counts



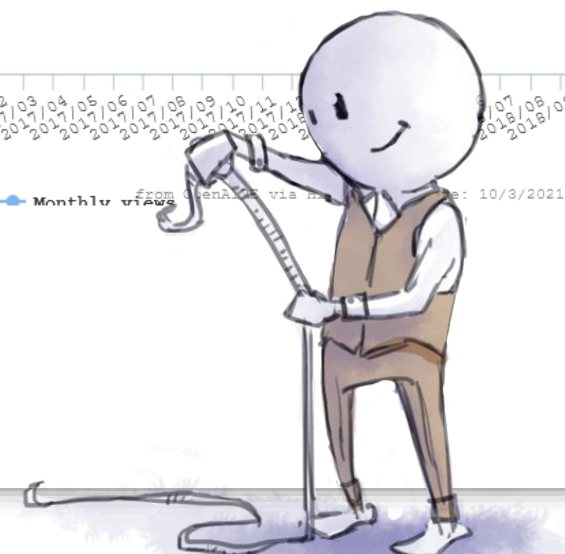
### Last month's reports

- AR1
- IR1
- RR1
- BR1
- BR2

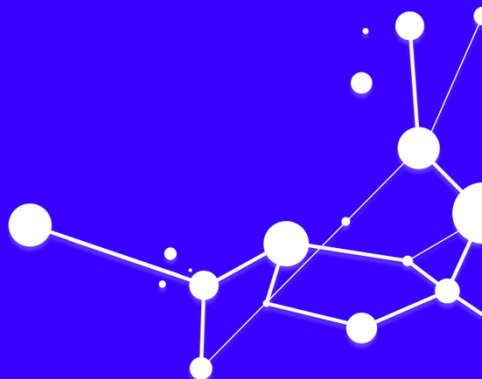
### REPOSITORIES

Universidade do Minho:  
Reposit...

Hide Controls



# A gateway to the European Open Science Cloud.

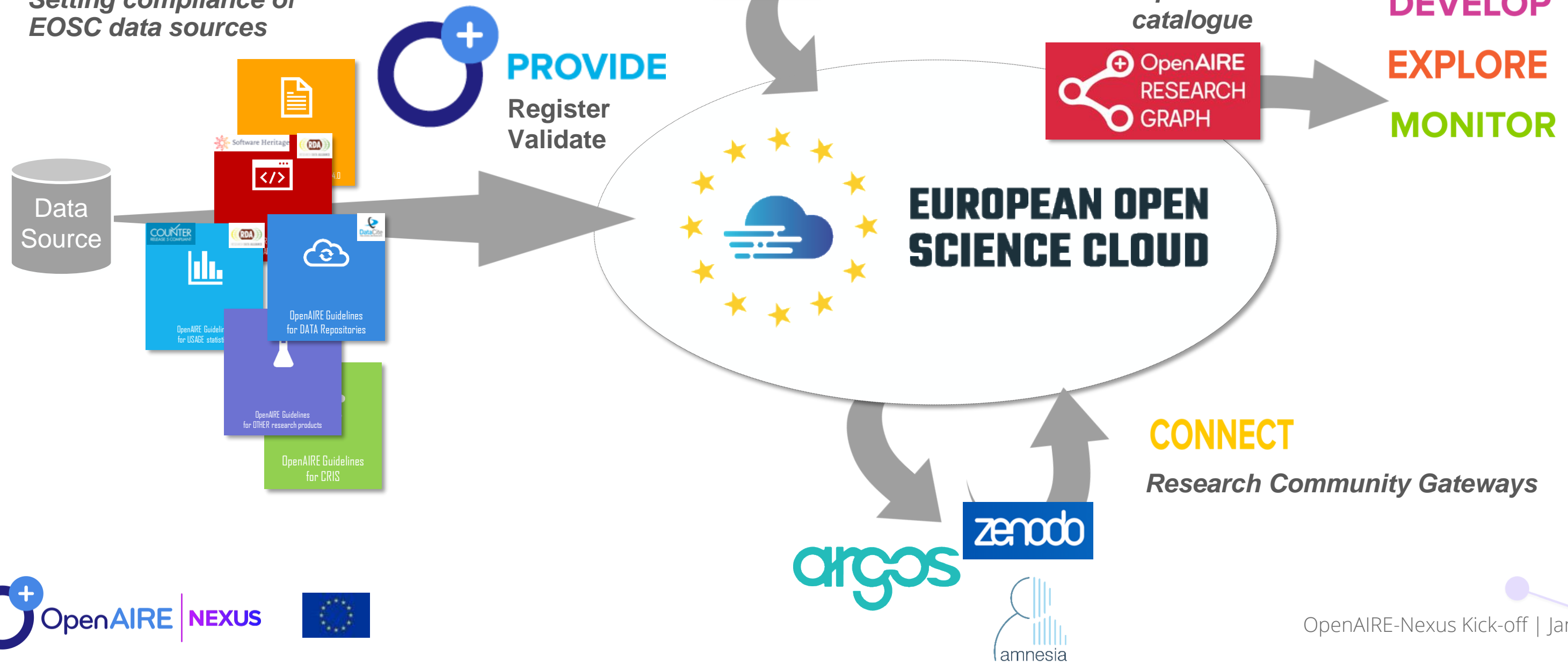




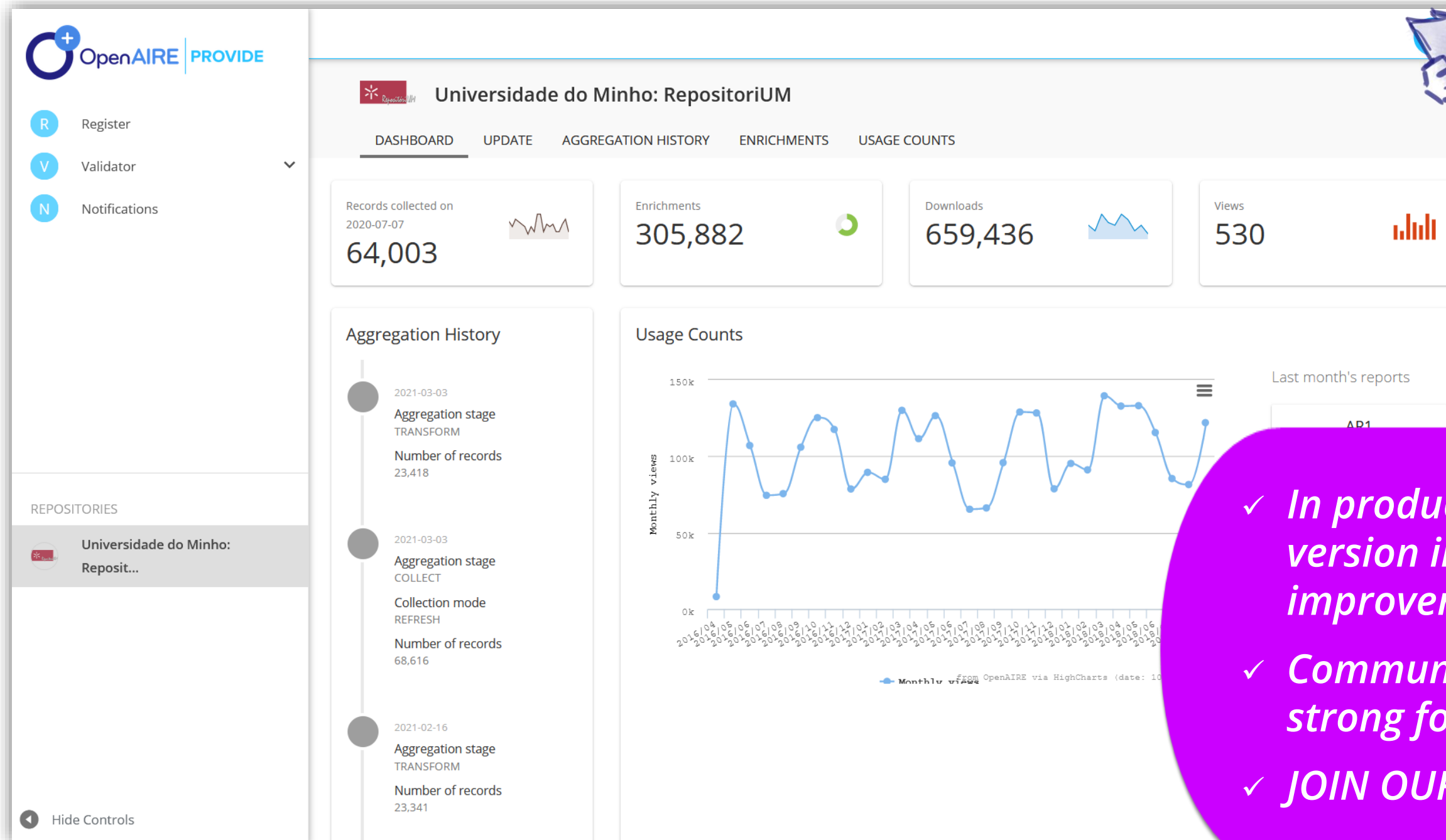
# OpenAIRE Provide – a gateway to the EOSC

## Guidelines

Setting compliance of EOSC data sources



# Takeaway



- ✓ *In production since Sept. 2018, new version in May 2020, several improvements in progress ...*
- ✓ *Community-driven service with a strong focus on the end-user needs.*
- ✓ *JOIN OUR MONTHLY CALLS.*





@openaire\_eu  
#OpenAIRE-Nexus

THANK YOU

**OpenAIRE-NEXUS team**

[pedro.principe@usdb.uminho.pt](mailto:pedro.principe@usdb.uminho.pt)

[info@openaire.eu](mailto:info@openaire.eu)

