

MGMT methylation may benefit overall survival in patients with moderately vascularized glioblastomas

Elies **Fuster-Garcia**^{*1}, David Lorente **Estelles**², María del Mar **Álvarez-Torres**³, Javier **Juan-Albarracín**³, Eduard **Chelebian**³, Alex **Rovira**⁴, Cristina Auger **Acosta**⁴, Jose **Pineda**⁵, Laura **Oleaga**⁵, Enrique **Mollá-Olmos**⁶, Silvano **Filice**⁷, Paulina **Due-Tønnessen**⁸, Torstein R. **Meling**^{9,10}, Kyrre E. **Emblem**¹ and Juan M. **García-Gómez**³

¹Department of Diagnostic Physics, Oslo University Hospital, Oslo, Norway

²Hospital de Castellón, Castellón, Spain

³Instituto Universitario de Tecnologías de la Información y Comunicaciones, Universitat Politècnica de València, València, Spain

⁴Hospital Universitari Vall d'Hebron, Barcelona, Spain

⁵Hospital Clínic, Barcelona, Spain

⁶Hospital Universitario de La Ribera, València, Spain

⁷Department of Medical Physics, University Hospital of Parma, Parma, Italy

⁸Department of Radiology, Oslo University Hospital, Oslo, Norway

⁹Department of Neurosurgery, Oslo University Hospital, Oslo, Norway

¹⁰Department of Neurosurgery, Geneva University Hospitals, Geneva, Switzerland

Corresponding Author: Elies Fuster-Garcia, PhD, Department of Diagnostic Physics, Oslo University Hospital, Sognsvannsveien 20, 0372 Oslo, Norway; (elies.fuster@gliohab.eu).

MGMT methylation may benefit overall survival in patients with moderately vascularized glioblastomas

Abstract

Objectives: To assess the combined role of tumor vascularity, estimated from perfusion MRI, and *MGMT* methylation status on overall survival (OS) in patients with glioblastoma.

Methods: A multicentric international data set including 96 patients from NCT03439332 clinical study were used to study the prognostic relationships between *MGMT* and perfusion markers. Relative cerebral blood volume (rCBV) in the most vascularized tumor regions was automatically obtained from preoperative MRIs using ONCOhabitats online analysis service. Cox survival regression models and stratification strategies were conducted to define a subpopulation that is particularly favored by *MGMT* methylation in terms of OS.

Results: rCBV distributions did not differ significantly ($p>0.05$) in the methylated and the non-methylated subpopulations. In patients with moderately vascularized tumors ($\text{rCBV}<10.73$), *MGMT* methylation was a positive predictive factor for OS ($\text{HR}=2.73$, $p=0.003$, $\text{AUC}=0.70$). In patients with highly vascularized tumors ($\text{rCBV}>10.73$) however, there was no significant effect of *MGMT* methylation ($\text{HR}=1.72$, $p=0.10$, $\text{AUC}=0.56$).

Conclusions: Our results indicate the existence of complementary prognostic information provided by *MGMT* methylation and rCBV. Perfusion markers could identify a subpopulation of patients who will benefit the most from *MGMT* methylation. Not considering this information may lead to bias in the interpretation of clinical studies.

Keywords:

1. Perfusion Imaging,
2. Glioblastoma,
3. *O(6)-Methylguanine-DNA Methyltransferase*,
4. Prognostic Factors,
5. Temozolomide

Key points:

- MRI perfusion provides complementary prognostic information to *MGMT* methylation.
- *MGMT* methylation improve prognosis in glioblastoma patients with moderate vascular profile.
- Failure to consider these relations may lead to bias in the interpretation of clinical studies.

Acronyms:

AUC	Area Under the Curve
DSC	Dynamic Susceptibility Contrast
FLAIR	Fluid Attenuated Inversion Recovery
HAT	Highly Angiogenic Tumor
HR	Hazard Ratio
<i>IDH</i>	Isocitrate Dehydrogenase
KPS	Karnofsky Performance Status
<i>MGMT</i>	<i>O(6)-Methylguanine-DNA Methyltransferase</i>
MS-MLPA	Methylation-Specific Multiplex Ligation-Dependent Probe Amplification
MSP	Methylation-Specific Polymerase Chain Reaction
OS	Overall Survival
rCBF	Relative Cerebral Blood Flow
rCBV	Relative Cerebral Blood Volume
RT	Radiotherapy
TMZ	Temozolomide

1. Introduction

Gliomas are the most common malignant primary central nervous system tumors, with an estimated annual incidence of 3.21 per 100,000 individuals in USA [1]. About half of all newly diagnosed gliomas are classified as glioblastoma, which is the most malignant type of brain cancer. Glioblastoma pathology is characterized by angiogenesis, highly infiltrative growth and cellular heterogeneity [2]. Despite an aggressive therapeutic approach combining maximum safe resection with radiotherapy (RT) plus concomitant and adjuvant temozolomide (TMZ), prognosis is poor, with median overall survival (OS) duration of approximately 14 months [3]. In 2016 the World Health Organization introduced molecular parameters along with histology to describe the interpatient glioblastoma heterogeneity associated with differential prognosis and responses to therapy [4].

Adequate clinical and molecular biomarkers are needed for accurate estimations of prognosis and optimal treatment-selections. Inactivation through promoter methylation of the O⁶-methylguanine-DNA-methyltransferase (*MGMT*) gene, which impairs the ability to repair DNA damaged induced by alkylating agents such as TMZ [5], has been described as a relevant biomarker for clinical decision-making in glioblastoma treatment. In a post-hoc analysis of a phase III trial, *MGMT* promoter methylation was associated with a two-year survival increase in TMZ-treated glioblastoma patients from 14% to 46% [6]. Additional studies have also described not only a predictive, but also a prognostic role of *MGMT* methylation for glioblastoma patients [7, 8]. Current guidelines support the use of *MGMT* methylation as a predictive biomarker in patients older than 70 years with Isocitrate dehydrogenase (IDH)-wild type grade IV gliomas [8].

Despite the well-documented impact of *MGMT* methylation on the prognosis of glioblastoma patients treated with TMZ, the survival of these patients is not explained by this factor alone. Tumor vascularity, for instance, is strongly associated with glioma transformation (i.e. grade progression), poorer survival [9], sensitivity to RT and effectiveness of bloodborne delivery of nutrients and chemotherapy [10].

MRI perfusion-based parameters correlate with tumor vascularity and properties of vessels [11, 12]. Numerous studies show that the vascularity as defined by MRI perfusion is a prognostic factor for glioblastoma even prior to initial surgery [13–15]. Perfusion parameters, such as relative cerebral blood volume (rCBV) in the enhancing tumor areas, are among the most consistently recognized independent predictors of survival [9]. Novel approaches based on artificial intelligence [15, 16], have been proposed to calculate perfusion-based biomarkers, based not on the entire enhancing lesion but on more homogeneous regions (habitats), thereby improving not only the prognostic capacity but also the reproducibility of the results [13, 17, 18].

In this study we aimed at evaluating whether the rCBV is a modulating factor of the prognostic effect of *MGMT* methylation status in patients with glioblastoma treated with TMZ.

2. Materials and Methods

Patient Cohort

The patient cohort has compiled by the multicenter and international retrospective clinical study NCT03439332 [19]. A total of 110 cases from this dataset with MRI perfusion studies were included in the current study. The NCT03439332 multicenter international dataset included patients treated at seven European hospitals from four countries: Hospital Clinic, Barcelona, Spain; Hospital Universitario Vall d'Hebron, Barcelona, Spain; Hospital Universitario de La Ribera, Alzira, Spain; Hospital de Manises, Manises, Spain; Azienda Ospedaliero-Universitaria di Parma, Parma, Italy; Oslo University Hospital, Oslo, Norway; and Centre Hospitalier Universitaire de Liège, Liège, Belgium. Patients were diagnosed with Glioblastoma grade IV WHO with histopathological confirmation and followed Stupp standard treatment. The extent of resection was assessed in each center by expert neurosurgeons and radiologists based on the postsurgical MRI study findings. A material transfer agreement was approved by all the participating centers and an acceptance report was issued by the Ethical Committee of each centre. The Universitat Politècnica de València institutional ethical board also approved this retrospective study. All methods were performed in accordance with the relevant guidelines and regulations or Declaration of Helsinki.

IDH1 mutation and MGMT methylation status assessment

MGMT methylation status was assessed in each center by pyrosequencing using a cut-off value between 9% and 10%, except for the cases from the Hospital Clinic in Barcelona where *MGMT* methylation status was assessed by methylation-specific polymerase chain reaction. The *IDH1* mutation status was assessed in each center by immunostains using the *IDH1* R132H antibody.

MRI Data Acquisition Protocol

Pre-surgical standard-of-care MRI examinations including pre- and post-gadolinium T1-weighted MRI, as well as T2-weighted, T2-fluid attenuated inversion recovery (FLAIR) and dynamic susceptibility contrast (DSC) T2* perfusion weighted sequences were collected from each participating center. All the MRI were obtained at 1.5-T or 3-T scanners, using different MRI acquisition protocols in each participating center. A summary of the MRI acquisition protocol used by each center is presented in Supplementary Materials Table S-I.

MRI Data Preprocessing

Anatomical MRI acquisitions were preprocessed using the following pipeline: (1) voxel isotropic resampling, (2) denoising, (3) rigid intra-patient registration, (4) affine registration to MNI space [20], (5) brain extraction and (6) magnetic field inhomogeneity correction. First, image resampling at 1mm³ was performed through linear interpolation. Next, denoising was carried using the adaptive Non-Local Means filter [21] with a search window of 7x7x7 voxels and a patch window of 3x3x3 voxels. Registration was performed with ANTs software [22] and Mutual Information, using the T1c MRI as reference. Brain extraction was performed through a Convolutional Neural Network with a U-Net architecture trained on a dataset of 160 T1c MRIs with glioblastomas manually annotated and validated by several independent neuroimaging researchers with more than 5 years of experience. Finally, magnetic field inhomogeneities were corrected with the N4 software using the previously computed intra-cranial mask [23].

Lesion Segmentation

Glioblastoma tissue segmentation was performed by means of a 3-D patch-based convolutional neural networks [24]. A U-net Res-Net architecture of 5 levels with long-term skip-connections with 16, 32, 64, 128 and 256 filters at each level, respectively, was used to perform the segmentation. At each level, a simple block and a residual block were chained together. A simple block consists of a convolution + batch normalization + ReLu activation function. A residual block consists of a convolution + batch normalization + ReLu + convolution + batch normalization + residual connection summation + ReLu activation function. Convolutions were performed with isotropic kernels of size 3x3x3, while batch normalization-momentum was fixed to 0.9. Max-pooling layers with pooling size and stride 2x2x2 were employed in the contracting path to sequentially condensate the relevant features of the input patches, while transpose convolutions were used in the expanding path to rearrange and project the latent features to the original size. The network works with patches of 32x32x32 with 3 channels corresponding to the T1c, T2 and FLAIR sequences. Adam optimizer with cross-entropy loss-function was used to train the network. The lesion segmentation network was trained on BraTS dataset [25–27] including 260 MRI studies segmented manually, by one to four raters, following the same annotation protocol, and their annotations were approved by experienced neuro-radiologists. Based on a blind independent validation dataset provided by BraTS international challenge, the results of this segmentation method obtain a median DICE of 0.85 on delineating the enhancing tumor region and a DICE of 0.92 in delineating the whole tumor region [28].”

DSC Perfusion Quantification

Quantification of rCBV and relative cerebral blood flow (rCBF) hemodynamic indices was performed employing standard techniques proposed in the literature [29]. rCBV was calculated by numerical integration of the area-under-curve of the T2* concentration-time signal, while rCBF was obtained by means of the block-circulant Singular Value Decomposition (SVD) devolution technique [29]. Gamma-variate curve-fitting and Boxerman technique [30] were used to correct for T2 and T1 leakage-effects. Mean transit time was computed from the central limit theorem by dividing rCBV/rCBF. The Arterial Input Function (AIF) was automatically detected by means of an iterative divide-and-conquer approach, using the peak height, the time-to-peak and the full-width at half maximum as features to detect arterial shape-like signals [24].

Definition of the Vascular Marker

The vascular marker used was based on the rCBV map obtained from the DSC MRI sequence. Specifically, we used the 90th percentile of rCBV values at the highly angiogenic tumor (HAT) region of the tumor ($rCBV_{HAT}$) as a robust indicator of the maximum perfusion-value of the region. HAT region was defined based on rCBV and rCBF maps following the methodology proposed by Jual-Albarracin et al. [15] and implemented as an open service in [24] An schema of the methodology used to compute the $rCBV_{HAT}$ is presented in Figure 2. This methodology has been shown to obtain comparable rCBV values between centers using different clinical protocols, imaging protocols or scanner models as reported in [17]

Stratification of Responsive Patients

The stratification of responsive patients was made based on the *MGMT* methylation and tumor vascularity (i.e. $rCBV_{HAT}$) markers. We generated two subpopulations, namely 1) the *MGMT* methylated, moderately vascularized tumors and 2) the *MGMT* unmethylated, highly vascularized tumors. Highly and moderately vascular glioblastomas were determined by a $rCBV_{HAT}$ threshold value ($rCBV_{th}$). The $rCBV_{th}$ value was defined as the median $rCBV_{HAT}$ of the study cohort.

Statistical Analyses

To analyze whether *MGMT* methylation was associated with differences in $rCBV_{HAT}$ values, we compared the $rCBV_{HAT}$ values for methylated and unmethylated *MGMT* populations using a non-parametric Mann-Whitney U test. In addition, we assessed the complementary prognostic information provided by *MGMT* methylation and $rCBV_{HAT}$, by computing three different Cox Proportional-Hazards regressions: 1) The first regression took into account only *MGMT* methylation status plus a set of relevant clinical variables (i.e. age at diagnostic, gender and the extent of resection) ; 2) The second regression took into account only the $rCBV_{HAT}$ value in the HAT habitat, plus the clinical variables; 3) The last regression was performed using both *MGMT* methylation-status and the $rCBV_{HAT}$ value, plus the clinical variables. In order to take advantage of as many cases as possible for the Cox analysis, we used a mean imputation strategy [31] in cases that did not have information on the extent of resection. The goodness-of-fit of each of survival models was evaluated through the concordance-statistic as defined by Harrell et al. [32]

As suggested in the literature [6], we performed a Kaplan-Meier survival analysis to assess differences in OS between patients subpopulations. Log-rank test was performed to test for significant differences in OS. For censored cases, we set the date of censorship to the last date of contact with the patient or, in cases where this information was not available, the date of the last MRI exam.

Finally, to reduce biases in survival analyses we analyzed whether the *IDH1* mutation was related to *MGMT* methylation by performing a Fisher test, and whether *IDH1* mutated tumors have a significantly different $rCBV_{HAT}$ values performing a U Mann-Whitney test, using those cases where *IDH1* information was available.

Software

The MRI data analysis was performed using ONCOhabitats [24], a freely available online service (www.onchabitats.upv.es) It provides a fully automated pipeline for the analysis of glioblastoma MRI studies including pre-processing, lesion segmentation, DSC perfusion quantification, and high angiogenic tumor delineation services, amongst others. Statistical analysis was performed with MATLAB (R2019a) and R (v3.6.0)[33].

4. Results

Characterization of Patient Cohorts

Of the 110 patients included from the NCT03439332 dataset, six exams (patients) were excluded because of processing errors with the automatic processing pipeline, five exams were excluded due to noise or MR artefacts that precluded DSC quantification (gamma variate R2 goodness of fit < 0.95); one exam was excluded due to inability to differentiate between tumor vascularity and reactive meningeal enhancement; and two cases were excluded due MRI perfusion field of view did not cover the entire lesion (see Figure 1). Of the remaining 96 patients, 43 (44.8%) presented the *MGMT* methylated. With a median follow-up of 391 days, median OS was 402 days; 15 patients were alive at the last data cut-off date and were censored in the survival analyses. Table I includes the most relevant demographic, molecular and clinical features of the study cohort

and summarizes the patients recruited. No significant relationships have been found between IDH1 mutation and MGMT methylation status ($p=0.39$), nor between IDH1 mutation and $rCBV_{HAT}$ values ($p=0.15$)

Non-significant association between MGMT and $rCBV_{HAT}$

Median $rCBV_{HAT}$ in the whole population was 10.73. Median $rCBV_{HAT}$ in methylated and non-methylated MGMT subpopulations were 11.06 and 10.35, respectively. $rCBV_{HAT}$ distributions did not differ significantly (Mann-Whitney U of 1062; $n=43$ and $n=53$, respectively, $p>0.05$ two-tailed) in the methylated and the non-methylated subpopulations.

MGMT Methylation Status and $rCBV_{HAT}$ Provide Complementary Prognostic Information

In order to evaluate the association between $rCBV_{HAT}$ (as a continuous variable) and MGMT methylation status with OS, we initially constructed three Cox proportional hazard (Cox-PH) regression models. The results of the three Cox-PH regression models obtained from NCT03439332 dataset are shown in Table II. Results of the two first models including $rCBV_{HAT}$ or MGMT status independently showed a significant association of MGMT status (HR: 2.01; 95% CI: 1.21-3.34; $p=0.007$) with OS, but a non-significant association of $rCBV_{HAT}$ (HR: 1.05; 95% CI: 0.99-1.11; $p=0.102$) with OS. When evaluating both parameters in the multivariable Cox-PH model (Table II), both were independently associated with OS: MGMT status (HR: 2.12; 95% CI: 1.27-3.52; $p=0.004$) and $rCBV_{HAT}$ (HR: 1.06; 95% CI: 1.00-1.12; $p=0.049$). The performance of the model improved by increasing the Concordance, decreasing the p-values of each variable, and increasing the hazard ratios (HR), suggesting that MGMT methylation and $rCBV_{HAT}$ provide complementary prognostic information.

$rCBV_{HAT}$ Improves the Capability of MGMT to Stratify Responsive Patients

We then evaluated the impact of MGMT methylation status in patients with highly and moderately vascularized tumors, as defined by the $rCBV_{HAT}$ values. $rCBV_{th}$, defined as the median $rCBV_{HAT}$ of the study cohort, was established at $rCBV_{th}=10.73$.

We then analyzed differences in OS between patients with methylated and unmethylated MGMT promoters for the entire cohort, patients with highly vascularized tumors ($rCBV_{HAT} \geq 10.73$), and patients with moderately vascularized tumors ($rCBV_{HAT} < 10.73$). In the cohort, 48 (50%) and 48 (50%) patients presented with highly and moderately vascularized tumors, respectively.

We observed a significant association of MGMT methylation and OS (HR 2.1 [95%CI: 1.33-3.33]; $p=0.002$) (Table III). In patients with moderately vascularized tumors ($rCBV_{HAT} < 10.73$) the association between MGMT methylation and OS was higher (HR 2.73 [95%CI: 1.40-5.32]; $p=0.003$) than in the general population. Finally, there was no association between MGMT methylation and OS in patients with high vascularity ($rCBV_{HAT} \geq 10.73$) (HR: 1.72 [95% CI: 0.90-3.27]; $p=0.10$). Kaplan-Meier curves for the four subpopulations are presented in Figure 3.

5. Discussion

In this study, we present a potential role of tumor vascularity in the prognostic impact of MGMT methylation status in glioblastoma patients. As was expected from the literature, we observe a significant prognostic impact of MGMT methylation in glioblastoma patients treated with TMZ included in the NCT03439332 multicenter international dataset. Moreover, our results show that tumor vascularity may identify a subgroup of patients that exhibit a greater benefit from MGMT methylation.

Once glioblastoma patients are dichotomized into highly and moderately vascularized tumor subgroups using rCBV, we observe a highly significant impact of *MGMT* status in patients with moderately vascularized tumors, and only a non-significant trend in patients with highly vascularized tumors. From the comparison of the three multiparametric Cox survival analyses based on *MGMT* and rCBV_{HAT}, we conclude that the information provided by both variables are relevant and complementary in predicting the prognosis of glioblastoma patients treated with TMZ. This implies that *MGMT* methylation assessment may provide incomplete information regarding prognosis, and that adding the characterization of tumor vascularization may improve estimation of responsiveness to TMZ. We propose a new classification of patients based on tumor vascularity, derived from the NCT03439332 multicenter international dataset. Our study proves the feasibility of using perfusion MRIs to identify subpopulations of glioblastoma patients with a higher likelihood of a beneficial effect of standard Stupp treatment (i.e. including TMZ), patients with methylated *MGMT* and moderate vascularization in the contrast-enhancing tumor areas. On the contrary, patients with highly vascularized tumors will probably benefit less from TMZ, independently of the *MGMT* methylation status. We hypothesize that tumors with a lower vascularization may be potentially less aggressive, with a lower prevalence of molecular aberrations that may confer resistance to alkylating agents in the presence of a methylated *MGMT*.

Different studies have evaluated possible associations between *MGMT* methylation and tumor vascularity. A study by Hempel et al. [34] (n=100 including 24 glioblastomas) found significantly higher rCBV values in IDH wild-type glioblastomas with a methylated *MGMT* than in those with an unmethylated *MGMT*. Chahal et al. [35] found higher levels of vascular endothelial growth factor receptor 1 (*VEGFR-1*) in unmethylated compared with methylated *MGMT* cells, hypothesizing that this should lead to an increased vascularization of the tumor. However, another small sample study (n=24) by Moon et al. [36] concluded that rCBV did not differ significantly between methylated and unmethylated *MGMT* tumors. In our study, based on a larger cohort, no significant relationship was observed between *MGMT* methylation and the rCBV_{HAT}. Due to the influence of *MGMT* on the effectiveness of therapies with antineoplastic drugs of alkylating agent class (i.e. TMZ), several studies suggest avoiding these therapies in those patients with non-methylated *MGMT* [6, 37]. The conclusions of this study further suggest that to obtain the most significant benefit we should select among patients with methylated *MGMT* those with moderate vascularity.

The main limitation of the study is the lack of a complete molecular profile for all cases. Several studies already showed the importance of combining *MGMT* methylation status with other features when determining the patients who will benefit the most from it. Having methylated *MGMT* is an advantage specially when *TERT* expression is high [38] and progression free survival is higher when both *MGMT* and mutant p53 expression is low [39]. Also, *MGMT* methylation displays better survival prediction performance when combined with *IDH1* mutations [40]. In this study we have chosen to use CBV as the most relevant perfusion parameter for the analysis of the prognostic value of vascularity. However, in future work it would be interesting to extend the study to include complementary markers derived from morphological [41], molecular [42], dynamic contrast-enhanced and vessel architecture [43] imaging sequences that could help us to understand the complex vascular phenomena behind the results of this study.

This study demonstrates that combining *MGMT* methylation status together with the rCBV_{HAT} value, obtained completely automatically from standard-of-care MRI studies through an online and open image analysis service (<https://www.oncohabitats.upv.es>) can provide a more reliable prognostic indicator for designing patient stratification strategies. This ensures the reproducibility of the obtained results and the immediate applicability of the proposed conclusions in the clinical trials setting. In conclusion, we consider that information of rCBV_{HAT} and *MGMT* methylation status should be

included in randomisation/stratification strategies of new clinical trials. Due to the joint implications of these two factors on patient survival, failure to consider these factors may lead to significant bias in the interpretation of the results from such studies.

Acknowledgements

We sincerely thank the collaboration of the different hospitals that have participated in the NCT03439332 multicenter international study: Hospital Clinic, Barcelona, Spain; Hospital Universitario Vall d'Hebron, Barcelona, Spain; Hospital Universitario de La Ribera, Alzira, Spain; Hospital de Manises, Manises, Spain; Azienda Ospedaliero-Universitaria di Parma, Parma, Italy; Oslo University Hospital, Oslo, Norway; and Centre Hospitalier Universitaire de Liège, Liège, Belgium.

Funding

This study has received funding by MTS4up project (National Plan for Scientific and Technical Research and Innovation 2013-2016, No. DPI2016-80054-R) (JMGG); H2020-SC1-2016-CNECT Project (No. 727560) (JMGG), H2020-SC1-BHC-2018-2020 (No. 825750) (JMGG), The European Research Council (ERC) under the European Union's Horizon 2020 (Grant Agreement No 758657), the South-Eastern Norway Regional Health Authority Grants 2017073 and 2013069, the Research Council of Norway Grants 261984 (KEE). M.A.T was supported by Programa Estatal de Promoción del Talento y su Empleabilidad en I+D+i (DPI2016-80054-R). E.F.G was supported by the European Union's Horizon 2020 research and innovation programme under the Marie Skłodowska-Curie grant agreement (No 844646).

Compliance with Ethical Standards

Guarantor:

The scientific guarantor of this publication is Juan Miguel García Gómez, full professor at Universitat Politècnica de València (juanmig@upv.es)

Conflict of Interest:

The authors of this manuscript declare no relationships with any companies whose products or services may be related to the subject matter of the article.

Statistics and Biometry:

No complex statistical methods were necessary for this paper.

Informed Consent:

Written informed consent was waived by the Institutional Review Board.

Ethical Approval:

Institutional Review Board approval was obtained. A material transfer agreement was approved by all the participating centers and an acceptance report was issued by the Ethical Committee of each centre. The Universitat Politècnica de València institutional ethical board also approved this retrospective study.

Study subjects or cohorts overlap:

Some study subjects or cohorts have been previously reported in [16].

In the present study, we used a subset of the NCT03439332 multicenter study cohort. The NCT03439332 cohort was used in [16] to validate the primary endpoint of the NCT03439332 study, which is to validate the robust association between vascular habitats and patient prognosis in glioblastoma. In the present study, however, we use a subset of these data to study the joint influence of vascularity, estimated by perfusion MRI, and MGMT methylation on the survival of patients with GBM. MGMT methylation was not considered in the study of Álvarez-Torres et al. [16], moreover the objective, results and conclusions do not overlap between the current and previous studies.

[16] Álvarez-Torres MDM, Juan-Albarracín J, Fuster-Garcia E, et al (2019) Robust association between vascular habitats and patient prognosis in glioblastoma: An international multicenter study. *J Magn Reson Imaging JMRI*. <https://doi.org/10.1002/jmri.26958>

Methodology

- retrospective
- observational
- multicenter study

References

1. Ostrom QT, Gittleman H, Liao P, et al (2017) CBTRUS Statistical Report: Primary brain and other central nervous system tumors diagnosed in the United States in 2010-2014. *Neuro-Oncol* 19:v1–v88. <https://doi.org/10.1093/neuonc/nox158>
2. Wen PY, Kesari S (2008) Malignant gliomas in adults. *N Engl J Med* 359:492–507. <https://doi.org/10.1056/NEJMra0708126>
3. Van Meir EG, Hadjipanayis CG, Norden AD, et al (2010) Exciting new advances in neuro-oncology: the avenue to a cure for malignant glioma. *CA Cancer J Clin* 60:166–193. <https://doi.org/10.3322/caac.20069>
4. Louis DN, Perry A, Reifenberger G, et al (2016) The 2016 World Health Organization Classification of Tumors of the Central Nervous System: a summary. *Acta Neuropathol (Berl)* 131:803–820. <https://doi.org/10.1007/s00401-016-1545-1>
5. Stupp R, Hegi ME, Mason WP, et al (2009) Effects of radiotherapy with concomitant and adjuvant temozolomide versus radiotherapy alone on survival in glioblastoma in a randomised phase III study: 5-year analysis of the EORTC-NCIC trial. *Lancet Oncol* 10:459–466. [https://doi.org/10.1016/S1470-2045\(09\)70025-7](https://doi.org/10.1016/S1470-2045(09)70025-7)
6. Hegi ME, Diserens A-C, Gorlia T, et al (2005) MGMT Gene Silencing and Benefit from Temozolomide in Glioblastoma. *N Engl J Med* 352:997–1003. <https://doi.org/10.1056/NEJMoa043331>
7. Gorlia T, van den Bent MJ, Hegi ME, et al (2008) Nomograms for predicting survival of patients with newly diagnosed glioblastoma: prognostic factor analysis of EORTC and NCIC trial 26981-22981/CE.3. *Lancet Oncol* 9:29–38. [https://doi.org/10.1016/S1470-2045\(07\)70384-4](https://doi.org/10.1016/S1470-2045(07)70384-4)
8. Rivera AL, Pieloski CE, Gilbert MR, et al (2010) MGMT promoter methylation is predictive of response to radiotherapy and prognostic in the absence of adjuvant alkylating chemotherapy for glioblastoma. *Neuro-Oncol* 12:116–121. <https://doi.org/10.1093/neuonc/nop020>
9. Russell SM, Elliott R, Forshaw D, et al (2009) Glioma vascularity correlates with reduced patient survival and increased malignancy. *Surg Neurol* 72:242–246; discussion 246-247. <https://doi.org/10.1016/j.surneu.2008.11.012>
10. Batchelor TT, Gerstner ER, Emblem KE, et al (2013) Improved tumor oxygenation and survival in glioblastoma patients who show increased blood perfusion after cediranib and chemoradiation. *Proc Natl Acad Sci* 110:19059–19064. <https://doi.org/10.1073/pnas.1318022110>
11. Ulyte A, Katsaros VK, Liouta E, et al (2016) Prognostic value of preoperative dynamic contrast-enhanced MRI perfusion parameters for high-grade glioma patients. *Neuroradiology* 58:1197–1208. <https://doi.org/10.1007/s00234-016-1741-7>
12. Yoo R-E, Yun TJ, Hwang I, et al (2020) Arterial spin labeling perfusion-weighted imaging aids in prediction of molecular biomarkers and survival in glioblastomas. *Eur Radiol* 30:1202–1211. <https://doi.org/10.1007/s00330-019-06379-2>
13. Fuster- Garcia E, Juan- Albarracín J, García- Ferrando GA, et al (2018) Improving the estimation of prognosis for glioblastoma patients by MR based hemodynamic tissue signatures. *NMR Biomed* 31:e4006. <https://doi.org/10.1002/nbm.4006>
14. Hou BL, Wen S, Katsevman GA, et al (2018) Magnetic Resonance Imaging Parameters and Their Impact on Survival of Patients with Glioblastoma: Tumor Perfusion Predicts Survival. *World Neurosurg*. <https://doi.org/10.1016/j.wneu.2018.12.085>
15. Juan-Albarracín J, Fuster-Garcia E, Pérez-Girbés A, et al (2018) Glioblastoma: Vascular Habitats Detected at Preoperative Dynamic Susceptibility-weighted Contrast-enhanced Perfusion MR Imaging Predict Survival. *Radiology* 287:944–954. <https://doi.org/10.1148/radiol.2017170845>

16. Chang Y-CC, Ackerstaff E, Tschudi Y, et al (2017) Delineation of Tumor Habitats based on Dynamic Contrast Enhanced MRI. *Sci Rep* 7:9746. <https://doi.org/10.1038/s41598-017-09932-5>
17. Álvarez-Torres MDM, Juan-Albarracín J, Fuster-Garcia E, et al (2019) Robust association between vascular habitats and patient prognosis in glioblastoma: An international multicenter study. *J Magn Reson Imaging JMRI*. <https://doi.org/10.1002/jmri.26958>
18. Wu H, Tong H, Du X, et al (2020) Vascular habitat analysis based on dynamic susceptibility contrast perfusion MRI predicts IDH mutation status and prognosis in high-grade gliomas. *Eur Radiol*. <https://doi.org/10.1007/s00330-020-06702-2>
19. Multicentre Validation of How Vascular Biomarkers From Tumor Can Predict the Survival of the Patient With Glioblastoma - Full Text View - ClinicalTrials.gov. <https://clinicaltrials.gov/ct2/show/NCT03439332>. Accessed 24 Apr 2019
20. Brett M, Johnsrude IS, Owen AM (2002) The problem of functional localization in the human brain. *Nat Rev Neurosci* 3:243–249. <https://doi.org/10.1038/nrn756>
21. Manjón M JV, Coupé, P, Martí-Bonmatí, L, Collins, DL, Robles (2010) Adaptive non-local means denoising of MR images with spatially varying noise levels. *J Magn Reson Imaging* 31:192–203. <https://doi.org/10.1002/jmri.22003>
22. Avants BB, Tustison NJ, Song G, et al (2011) A reproducible evaluation of ANTs similarity metric performance in brain image registration. *NeuroImage* 54:2033–2044. <https://doi.org/10.1016/j.neuroimage.2010.09.025>
23. Tustison NJ, Avants BB, Cook PA, et al (2010) N4ITK: improved N3 bias correction. *IEEE Trans Med Imaging* 29:1310–1320. <https://doi.org/10.1109/TMI.2010.2046908>
24. Juan-Albarracín J, Fuster-Garcia E, García-Ferrando GA, García-Gómez JM (2019) ONCOhabitats: A system for glioblastoma heterogeneity assessment through MRI. *Int J Med Inf* 128:53–61. <https://doi.org/10.1016/j.ijmedinf.2019.05.002>
25. Menze BH, Jakab A, Bauer S, et al (2015) The Multimodal Brain Tumor Image Segmentation Benchmark (BRATS). *IEEE Trans Med Imaging* 34:1993–2024. <https://doi.org/10.1109/TMI.2014.2377694>
26. Bakas S, Akbari H, Sotiras A, et al (2017) Advancing The Cancer Genome Atlas glioma MRI collections with expert segmentation labels and radiomic features. *Sci Data* 4:170117. <https://doi.org/10.1038/sdata.2017.117>
27. Bakas S, Reyes M, Jakab A, et al (2018) Identifying the Best Machine Learning Algorithms for Brain Tumor Segmentation, Progression Assessment, and Overall Survival Prediction in the BRATS Challenge. *ArXiv181102629 Cs Stat*
28. Juan-Albarracín J, Fuster-Garcia E, del Mar Álvarez-Torres M, et al (2020) ONCOhabitats Glioma Segmentation Model. In: Crimi A, Bakas S (eds) *Brainlesion: Glioma, Multiple Sclerosis, Stroke and Traumatic Brain Injuries*. Springer International Publishing, Cham, pp 295–303
29. Knutsson L, Ståhlberg F, Wirestam R (2010) Absolute quantification of perfusion using dynamic susceptibility contrast MRI: pitfalls and possibilities. *Magma N Y N* 23:1–21. <https://doi.org/10.1007/s10334-009-0190-2>
30. Boxerman JL, Schmainda KM, Weisskoff RM (2006) Relative cerebral blood volume maps corrected for contrast agent extravasation significantly correlate with glioma tumor grade, whereas uncorrected maps do not. *AJNR Am J Neuroradiol* 27:859–867
31. Little RJA, Rubin DB (2002) *Statistical analysis with missing data*. John Wiley & Sons, New York [etc.]

-
32. Harrell FE, Lee KL, Mark DB (1996) Multivariable Prognostic Models: Issues in Developing Models, Evaluating Assumptions and Adequacy, and Measuring and Reducing Errors. *Stat Med* 15:361–387. [https://doi.org/10.1002/\(SICI\)1097-0258\(19960229\)15:4<361::AID-SIM168>3.0.CO;2-4](https://doi.org/10.1002/(SICI)1097-0258(19960229)15:4<361::AID-SIM168>3.0.CO;2-4)
 33. R Core Team (v3.6.0) R: A Language and Environment for Statistical Computing
 34. Hempel J-M, Schittenhelm J, Klose U, et al (2018) In Vivo Molecular Profiling of Human Glioma. *Clin Neuroradiol*. <https://doi.org/10.1007/s00062-018-0676-2>
 35. Chahal M, Xu Y, Lesniak D, et al (2010) MGMT modulates glioblastoma angiogenesis and response to the tyrosine kinase inhibitor sunitinib. *Neuro-Oncol* 12:822–833. <https://doi.org/10.1093/neuonc/noq017>
 36. Moon W-J, Choi JW, Roh HG, et al (2012) Imaging parameters of high grade gliomas in relation to the MGMT promoter methylation status: the CT, diffusion tensor imaging, and perfusion MR imaging. *Neuroradiology* 54:555–563. <https://doi.org/10.1007/s00234-011-0947-y>
 37. Li Q, Guo J, Wang W, Wang D (2017) Relationship between MGMT gene expression and treatment effectiveness and prognosis in glioma. *Oncol Lett* 14:229–233. <https://doi.org/10.3892/ol.2017.6123>
 38. Nguyen HN, Lie A, Li T, et al (2017) Human TERT promoter mutation enables survival advantage from MGMT promoter methylation in IDH1 wild-type primary glioblastoma treated by standard chemoradiotherapy. *Neuro-Oncol* 19:394–404. <https://doi.org/10.1093/neuonc/now189>
 39. Li S, Jiang T, Li G, Wang Z (2008) Impact of p53 status to response of temozolomide in low MGMT expression glioblastomas: preliminary results. *Neurol Res* 30:567–570. <https://doi.org/10.1179/174313208X297913>
 40. Molenaar RJ, Verbaan D, Lamba S, et al (2014) The combination of IDH1 mutations and MGMT methylation status predicts survival in glioblastoma better than either IDH1 or MGMT alone. *Neuro-Oncol* 16:1263–1273. <https://doi.org/10.1093/neuonc/nou005>
 41. Li Z-C, Bai H, Sun Q, et al (2018) Multiregional radiomics features from multiparametric MRI for prediction of MGMT methylation status in glioblastoma multiforme: A multicentre study. *Eur Radiol* 28:3640–3650. <https://doi.org/10.1007/s00330-017-5302-1>
 42. Jiang S, Rui Q, Wang Y, et al (2018) Discriminating MGMT promoter methylation status in patients with glioblastoma employing amide proton transfer-weighted MRI metrics. *Eur Radiol* 28:2115–2123. <https://doi.org/10.1007/s00330-017-5182-4>
 43. Emblem KE, Mouridsen K, Bjornerud A, et al (2013) Vessel architectural imaging identifies cancer patient responders to anti-angiogenic therapy. *Nat Med* 19:1178–1183. <https://doi.org/10.1038/nm.3289>

Figures / Tables

Figure 1. CONSORT diagrams for NTC3439332 dataset.

Table I: Summary of NCT03439332 study cohort.

Table II. Results of the three Cox Proportional-Hazards regressions models obtained from NCT03439332 dataset.

Figure 2. Schema of the methodology used to compute the relative Cerebral Blood Volume at High Angiogenic Tumor Region ($rCBV_{HAT}$).

Table III. Results of the log-rank test of the Kaplan-Meier analysis for NCT03439332 cohort: 1) all, 2) moderate vascular ($rCBV_{HAT} < rCBV_{th}$), and 3) high vascular ($rCBV_{HAT} > rCBV_{th}$). For each subpopulation, the mean OS and number of patients with methylated MGMT and unmethylated MGMT are presented. Additionally, differences between OS (days), hazard ratios, area under the curve (AUC), and log-rank test resulting p-value are presented.

Figure 3. Kaplan-Meier curves showing the results of the stratification between moderate ($rCBV_{HAT} < 10.73$) and high vascular ($rCBV_{HAT} > 10.73$) subpopulations.

Table I: Summary of NCT03439332 study cohort.

NCT03439332	
Initial No. of patients	110
Excluded No. of patients	14 (13%)
Included No. of patients	96 (87%)
Gender (f/m)	30/66
Age at diagnosis (years)	59.1 [32,81]
Median Survival (days)	402 [43,1229]
<i>IDH1</i>	
- <i>mutated</i>	5
- <i>wild type</i>	58
- <i>unknown</i>	33
<i>MGMT</i>	
- <i>methylated</i>	43
- <i>unmethylated</i>	53
Resection	
- <i>gross-total</i>	45
- <i>subtotal</i>	41
- <i>biopsy</i>	8
- <i>unknown</i>	2
Location	
- <i>frontal</i>	36
- <i>parietal</i>	16
- <i>temporal</i>	31
- <i>occipital</i>	2
- <i>unknown</i>	11

Table II. Results of the three Cox Proportional-Hazards regressions models obtained from NCT03439332 dataset.

Clinical Variable	Excluding rCBV _{HAT}		Excluding MGMT meth.		All Clinical variables	
	HR (95% CI)	P value	HR (95% CI)	P value	HR (95% CI)	P value
Age at diagnostic	1.00 [0.97, 1.02]	0.948	0.99 [0.97, 1.02]	0.629	0.97 [0.99, 1.02]	0.695
Gender	0.88 [0.51, 1.53]	0.653	1.03 [0.61, 1.75]	0.910	0.83 [0.48, 1.44]	0.512
Resection	1.79 [0.86, 3.73]	0.119	2.16 [1.02, 4.54]	0.043*	1.84 [0.87, 3.86]	0.109
MGMT meth.	2.01 [1.21, 3.34]	0.007**	-	-	2.12 [1.27, 3.52]	0.004**
rCBV _{HAT}	-	-	1.05 [0.99, 1.11]	0.102	1.06 [1.00, 1.12]	0.049*
Concordance	0.59		0.59		0.61	

Table III. Results of the log-rank test of the Kaplan-Meier analysis for NCT03439332 cohort: 1) all, 2) moderate vascular ($rCBV_{HAT} < rCBV_{th}$), and 3) high vascular ($rCBV_{HAT} > rCBV_{th}$). For each subpopulation, the mean OS and number of patients with methylated MGMT and unmethylated MGMT are presented. Additionally, differences between OS (days), hazard ratios, area under the curve (AUC), and log-rank test resulting p-value are presented.

	No. Patients		Median OS		ΔOS	HR [95CI]	p	AUC
	Meth. MGMT	Unmeth. MGMT	Meth. MGMT	Unmeth. MGMT				
all	43	53	507	373	134	2.10 [1.33 - 3.33]	0.0016	0.61
moderate rCBV	19	29	678	411	267	2.73 [1.40 - 5.32]	0.0031	0.70
high rCBV	24	24	444	338	106	1.72 [0.90 - 3.27]	0.10	0.56

NCT03439332 dataset

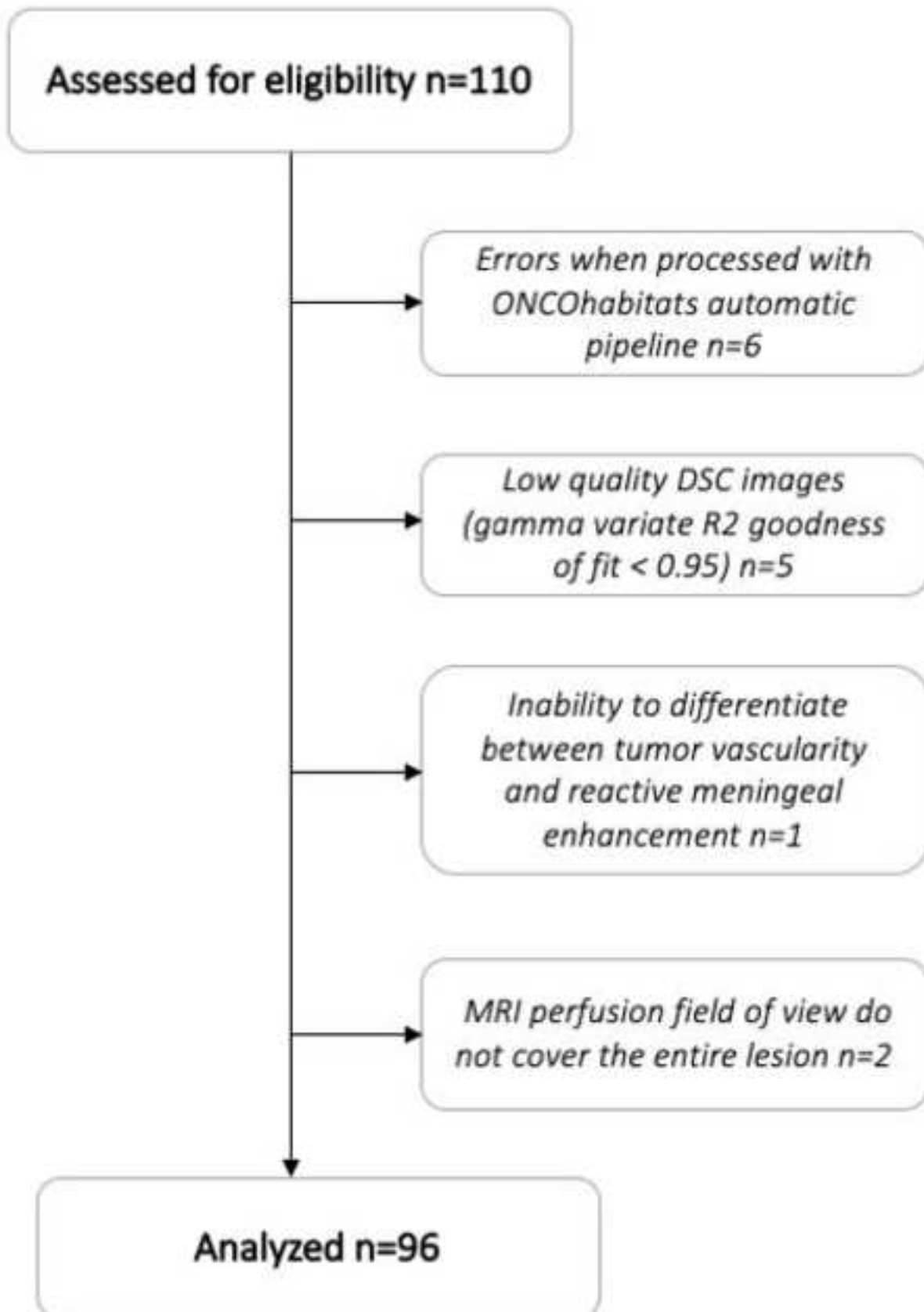


Figure 2

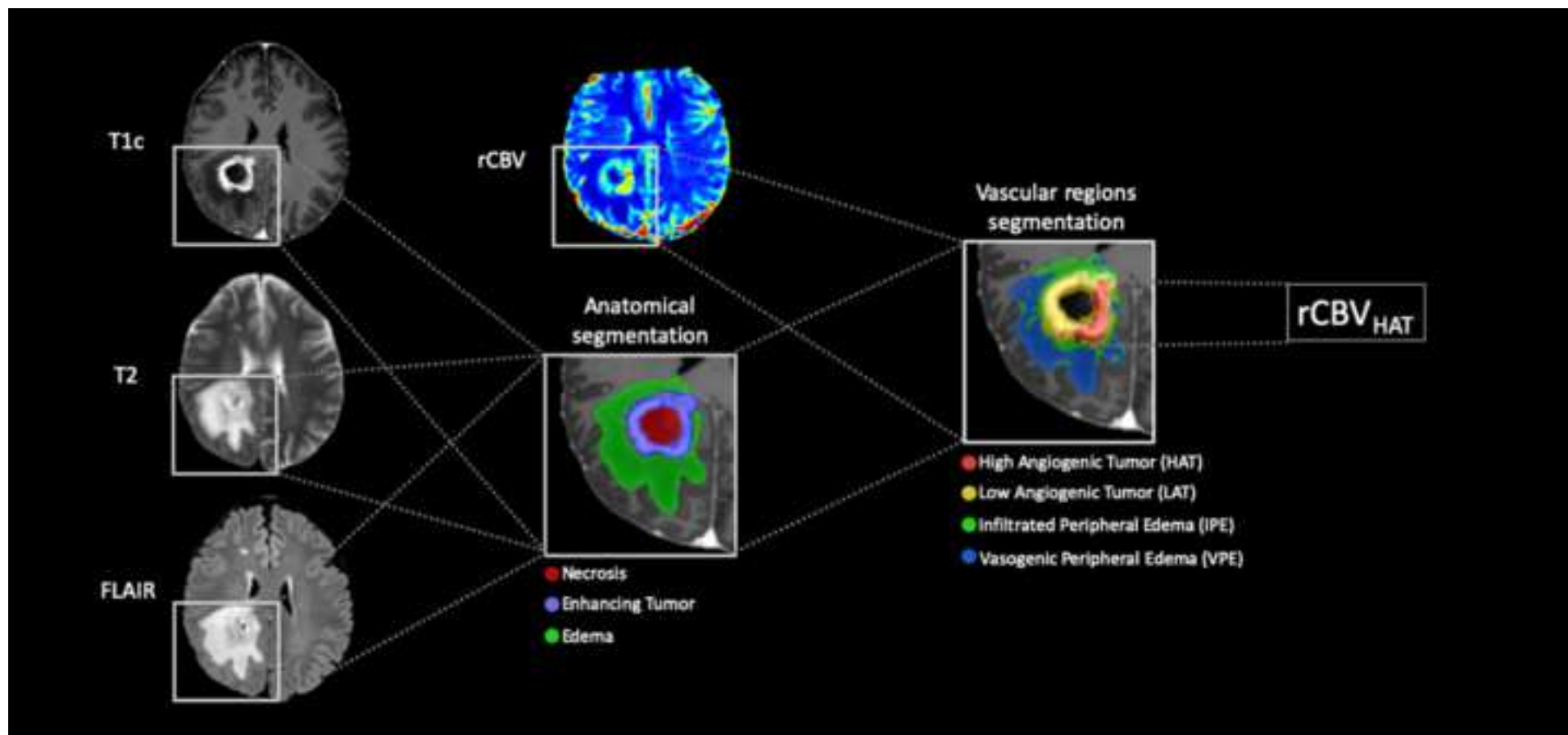
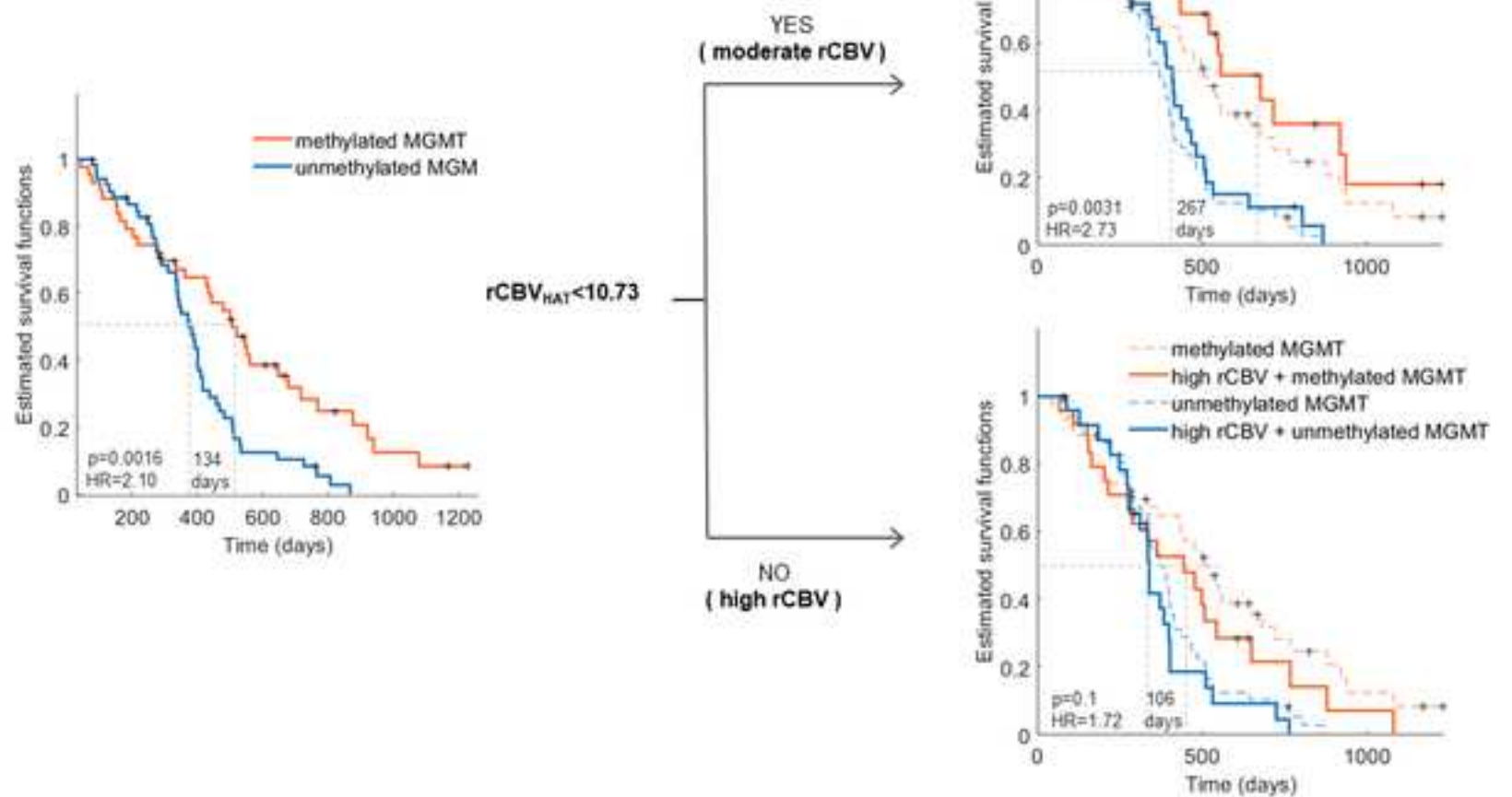


Figure 3



Acknowledgements

We sincerely thank the collaboration of the different hospitals that have participated in the NCT03439332 multicenter international study: Hospital Clinic, Barcelona, Spain; Hospital Universitario Vall d'Hebron, Barcelona, Spain; Hospital Universitario de La Ribera, Alzira, Spain; Hospital de Manises, Manises, Spain; Azienda Ospedaliero-Universitaria di Parma, Parma, Italy; Oslo University Hospital, Oslo, Norway; and Centre Hospitalier Universitaire de Liège, Liège, Belgium.

Funding

This study has received funding by MTS4up project (National Plan for Scientific and Technical Research and Innovation 2013-2016, No. DPI2016-80054-R) (JMGG); H2020-SC1-2016-CNECT Project (No. 727560) (JMGG), H2020-SC1-BHC-2018-2020 (No. 825750) (JMGG), The European Research Council (ERC) under the European Union's Horizon 2020 (Grant Agreement No 758657), the South-Eastern Norway Regional Health Authority Grants 2017073 and 2013069, the Research Council of Norway Grants 261984 (KEE). M.A.T was supported by Programa Estatal de Promoción del Talento y su Empleabilidad en I+D+i (DPI2016-80054-R). E.F.G was supported by the European Union's Horizon 2020 research and innovation programme under the Marie Skłodowska-Curie grant agreement (No 844646).

Compliance with Ethical Standards***Guarantor:***

The scientific guarantor of this publication is Juan Miguel García Gómez, full professor at Universitat Politècnica de València (juanmig@upv.es)

Conflict of Interest:

The authors of this manuscript declare no relationships with any companies whose products or services may be related to the subject matter of the article.

Statistics and Biometry:

No complex statistical methods were necessary for this paper.

Informed Consent:

Written informed consent was waived by the Institutional Review Board.

Ethical Approval:

Institutional Review Board approval was obtained. A material transfer agreement was approved by all the participating centers and an acceptance report was issued by the Ethical Committee of each centre. The Universitat Politècnica de València institutional ethical board also approved this retrospective study.

Study subjects or cohorts overlap:

Some study subjects or cohorts have been previously reported in [16].

In the present study, we used a subset of the NCT03439332 multicenter study cohort. The NCT03439332 cohort was used in [16] to validate the primary endpoint of the NCT03439332 study, which is to validate the robust association between vascular habitats and patient prognosis in glioblastoma. In the present study, however, we use a subset of these data to study the joint influence of vascularity, estimated by perfusion MRI, and MGMT methylation on

the survival of patients with GBM. MGMT methylation was not considered in the study of Álvarez-Torres et al. [16], moreover the objective, results and conclusions do not overlap between the current and previous studies.

[16] Álvarez-Torres MDM, Juan-Albarracín J, Fuster-García E, et al (2019) Robust association between vascular habitats and patient prognosis in glioblastoma: An international multicenter study. *J Magn Reson Imaging JMRI*. <https://doi.org/10.1002/jmri.26958>

Methodology

- retrospective
- observational
- multicenter study