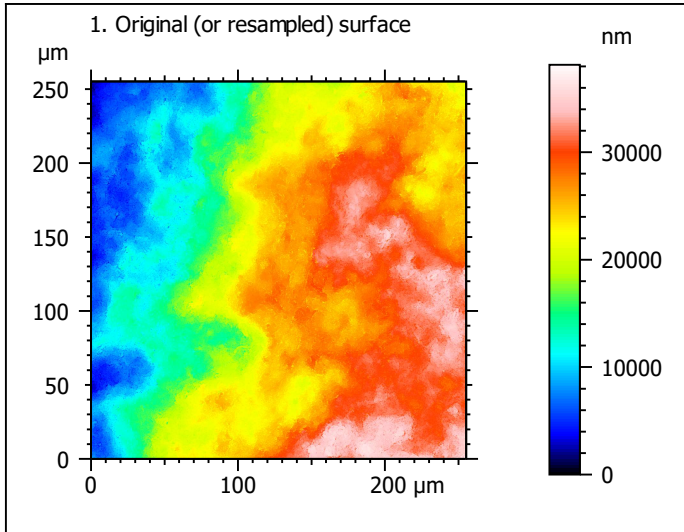


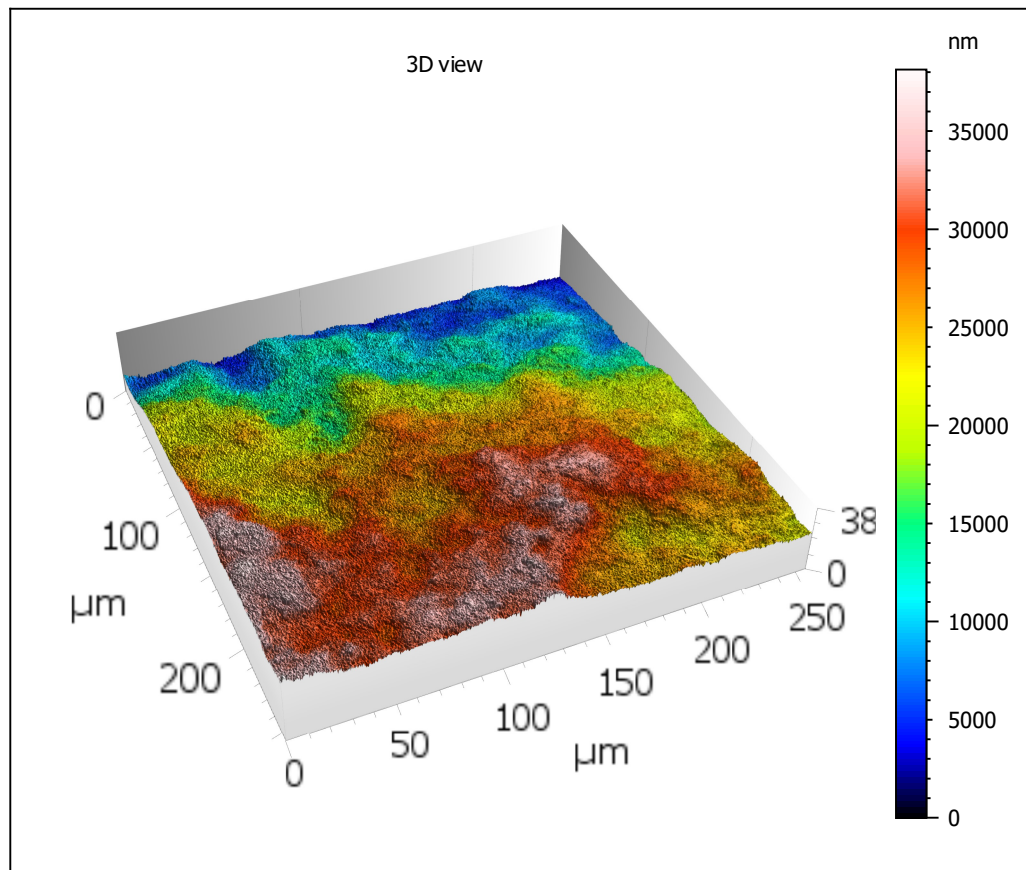
Template - Processing analysis

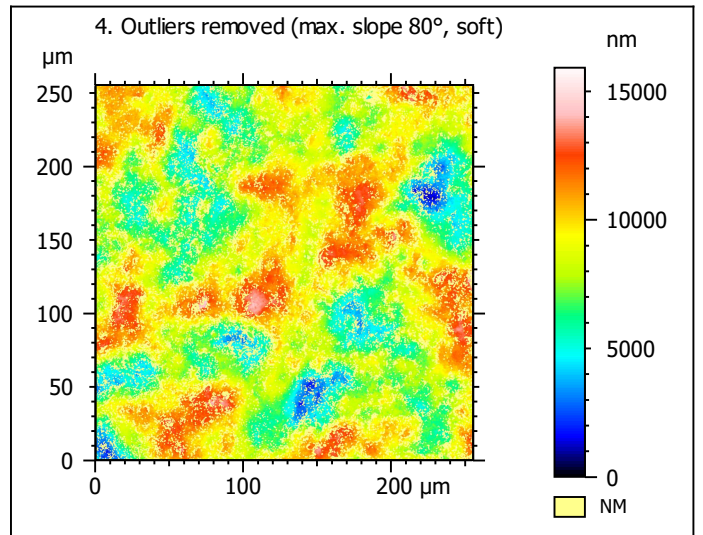
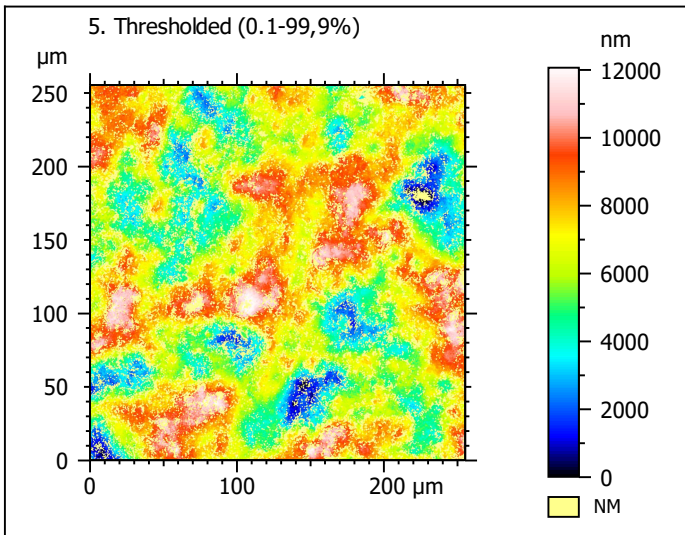
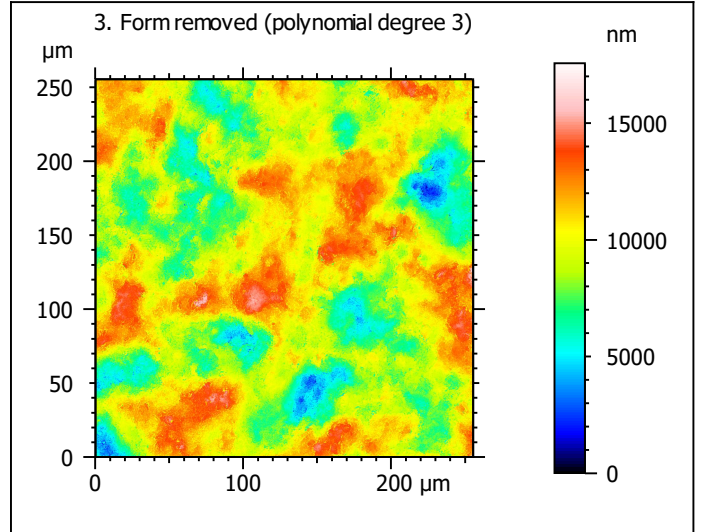
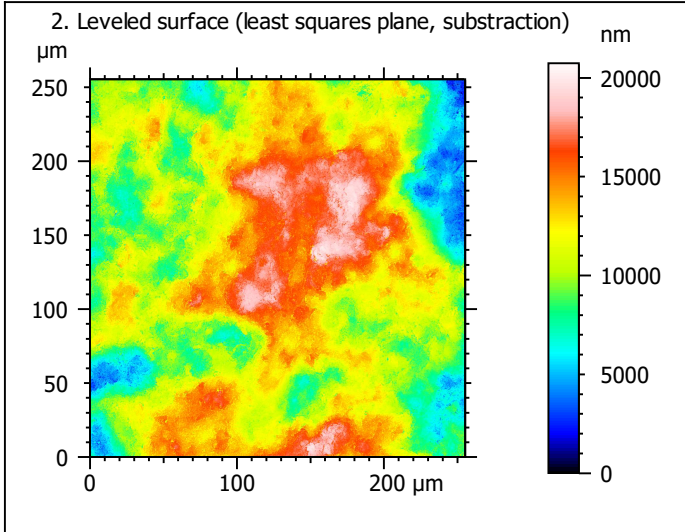
Template to process all surfaces acquired with the LSM with the 50x/0.75 and 50x/0.95 objectives.

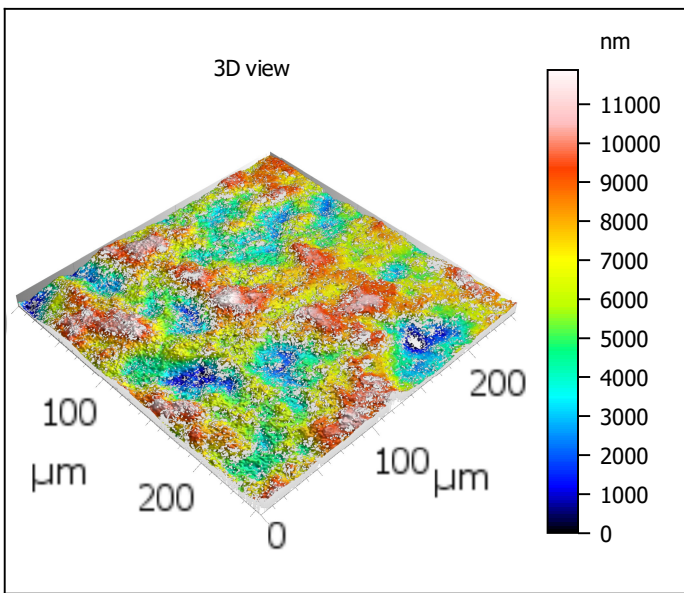
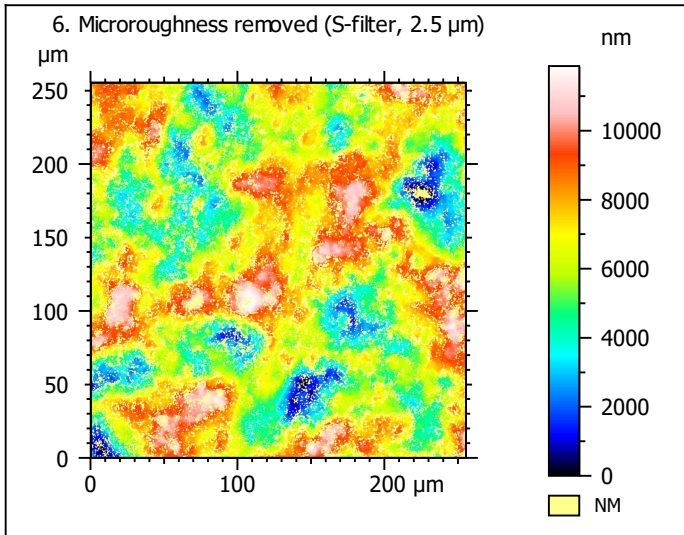
Processing



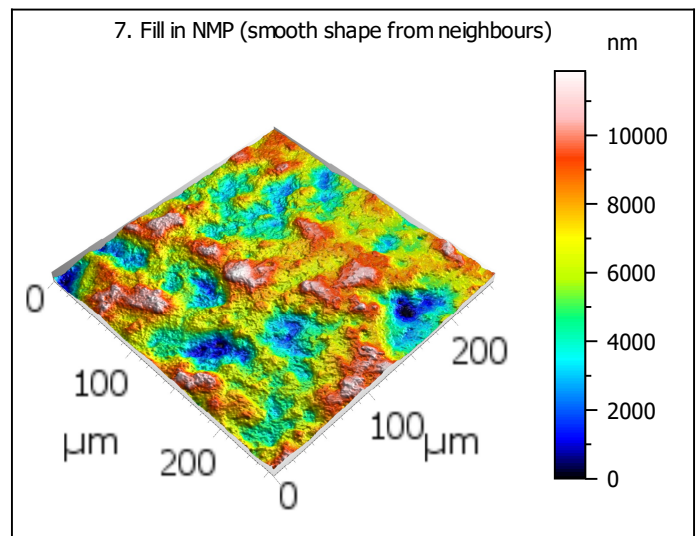
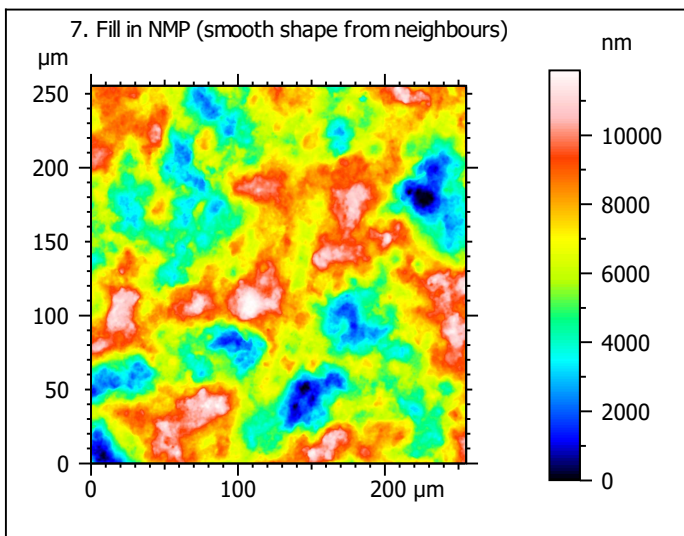
Identity card			
Name:	lime6-7_lsm_50x-0.75_...10_1000rot_surf1_Topo		
Created on:	9/10/2020 12:50:56 PM		
Studiabile type:	Surface		
Axis:	X		
Length:	255.3	μm	
Size:	1024	points	
Spacing:	0.2496	μm	
Axis:	Y		
Length:	255.3	μm	
Size:	1024	points	
Spacing:	0.2496	μm	
Axis:	Z		
Layer type:	Topography		
Length:	38142	nm	
Size:	65532	digits	
Spacing:	0.5820	nm	
NM-points ratio:	0.000 % (0 Pts)		







Identity card			
Name:	lime6-7_Ism_50x-0.75...filtered (As 2.500 μm)		
File path:	C:\Users\marreiros.R...00rot_surf1_Topo.sur		
Created on:	9/10/2020 12:50:56 PM		
Studiable type:	Surface		
Axis:	X		
Length:	255.3	μm	
Size:	1024	points	
Spacing:	0.2496	μm	
Offset:	0.000	μm	
Axis:	Y		
Length:	255.3	μm	
Size:	1024	points	
Spacing:	0.2496	μm	
Offset:	-255.3	μm	
Axis:	Z		
Layer type:	Topography		
Length:	11875	nm	
Min:	-6465	nm	
Max:	5411	nm	
Size:	204032	digits	
Spacing:	0.0582	nm	
NM-points ratio:	25.15 % (263761 Pts)		

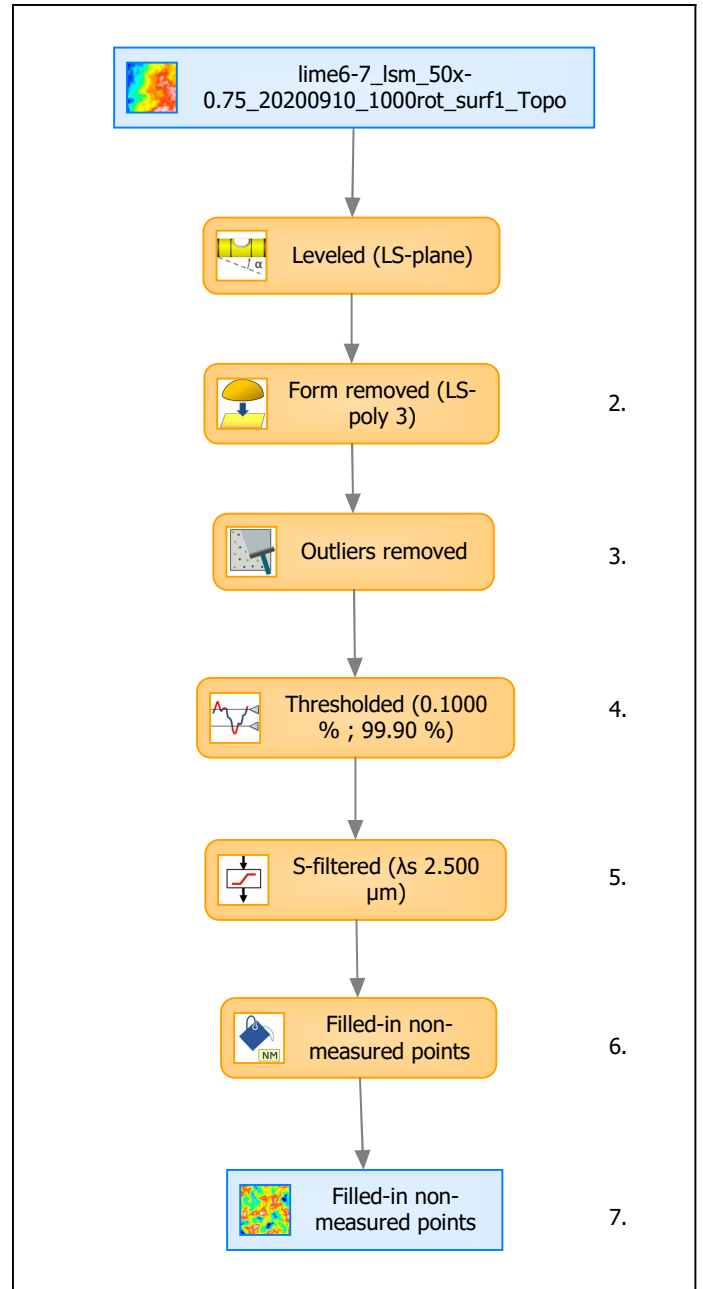


Identity card			
Name:	lime6-7_lsm_50x-0.75_...in non-measured points		
Created on:	9/10/2020 12:50:56 PM		
Studiable type:	Surface		
Axis:	X		
Length:	255.3	μm	
Size:	1024	points	
Spacing:	0.2496	μm	
Axis:	Y		
Length:	255.3	μm	
Size:	1024	points	
Spacing:	0.2496	μm	
Axis:	Z		
Layer type:	Topography		
Length:	11875	nm	
Size:	204032	digits	
Spacing:	0.0582	nm	
NM-points ratio:	0.000 % (0 Pts)		

Analyses

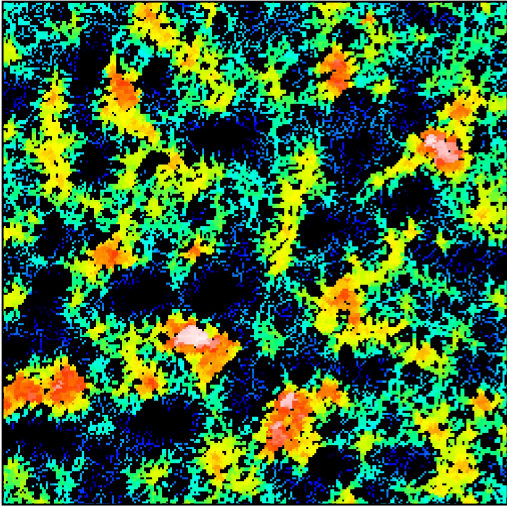
8. ISO 25178-2 parameters on surface #7

ISO 25178 - Primary surface			
<i>F: [Workflow] Form removed (LS-poly 3)</i>			
<i>S-filter (λs): [Workflow] S-filtered (λs 2.500 μm)</i>			
Height parameters			
Sq	2193	nm	
Ssk	-0.1488		
Sku	2.569		
Sp	5345	nm	
Sv	6530	nm	
Sz	11875	nm	
Sa	1791	nm	
Functional parameters			
Smr	1.256	%	
Smc	2878	nm	
Sxp	4405	nm	
Spatial parameters			
Sal	23.27	μm	
Str	0.6687		
Std	73.50	°	
Hybrid parameters			
Sdq	0.4170		
Sdr	7.830	%	
Functional parameters (Volume)			
Vm	0.07634	μm ³ /μm ²	
Vv	2.954	μm ³ /μm ²	
Vmp	0.07634	μm ³ /μm ²	
Vmc	2.094	μm ³ /μm ²	
Vvc	2.712	μm ³ /μm ²	
Vvv	0.2429	μm ³ /μm ²	



Analyses:	
ISO 25178	8.
Furrow	9.
Texture direction	10.
Texture isotropy	11.
SSFA	12.

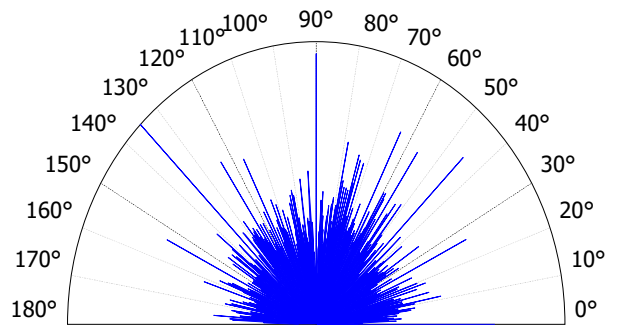
9. Furrow analysis on surface #7



All furrows are shown.

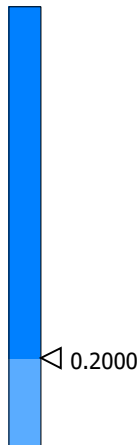
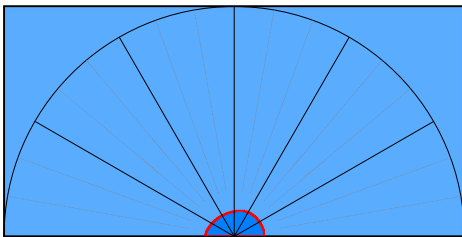
Parameters	Value	Unit
Maximum depth of furrows	6853	nm
Mean depth of furrows	2483	nm
Mean density of furrows	2404	cm/cm2

10. Texture direction on surface #7



Parameters	Value	Unit
First direction	135.0	°
Second direction	89.99	°
Third direction	45.00	°

11. Texture isotropy on surface #7



Parameters	Value	Unit
Isotropy	80.19	%

12. SSFA on surface #7

