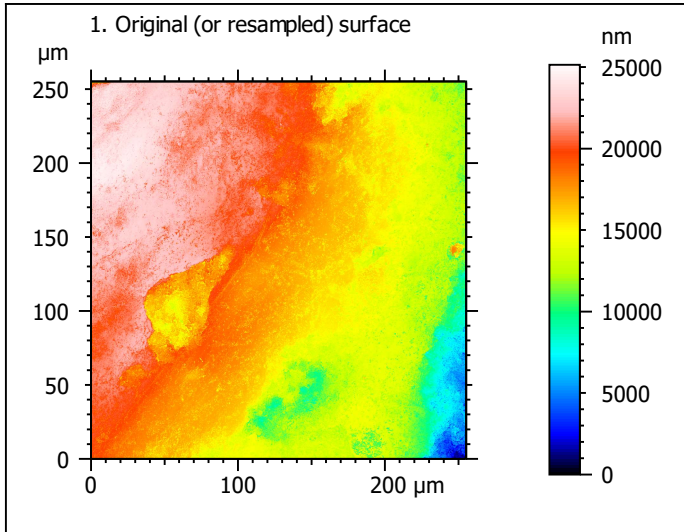


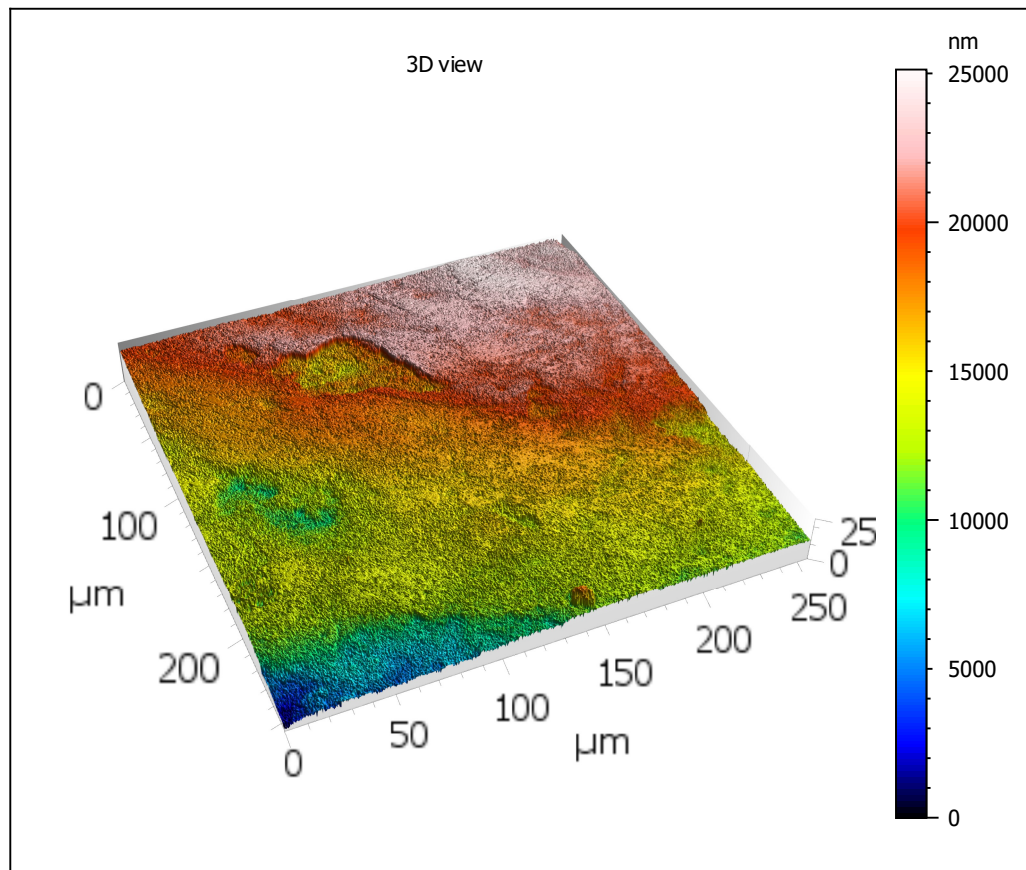
Template - Processing analysis

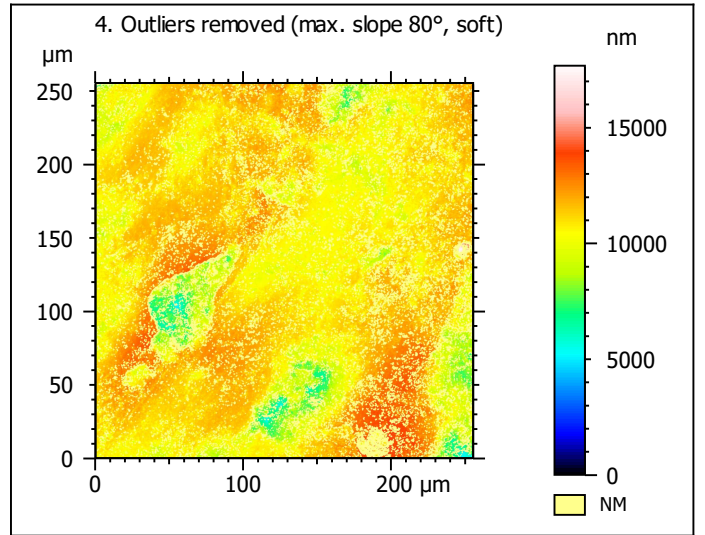
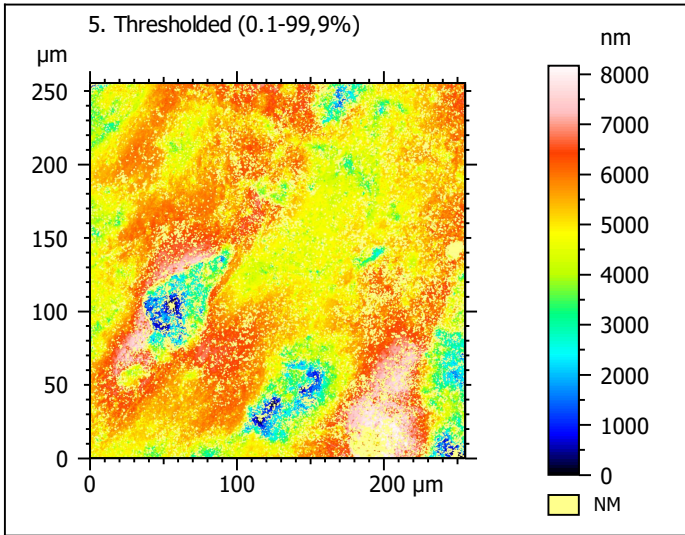
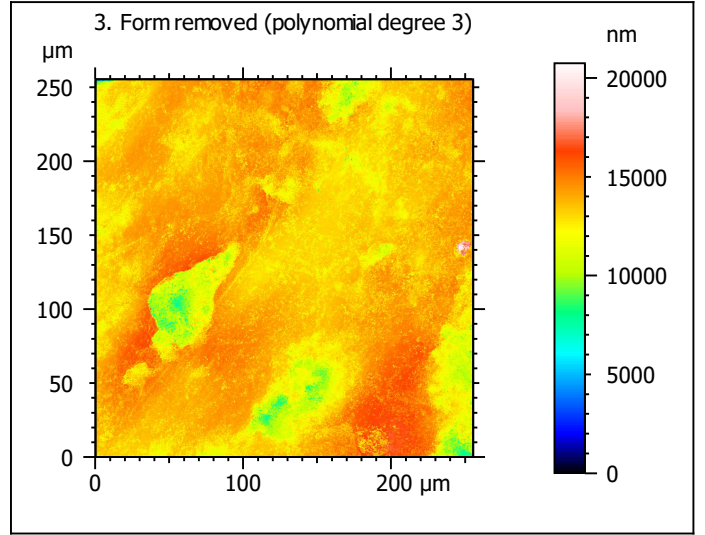
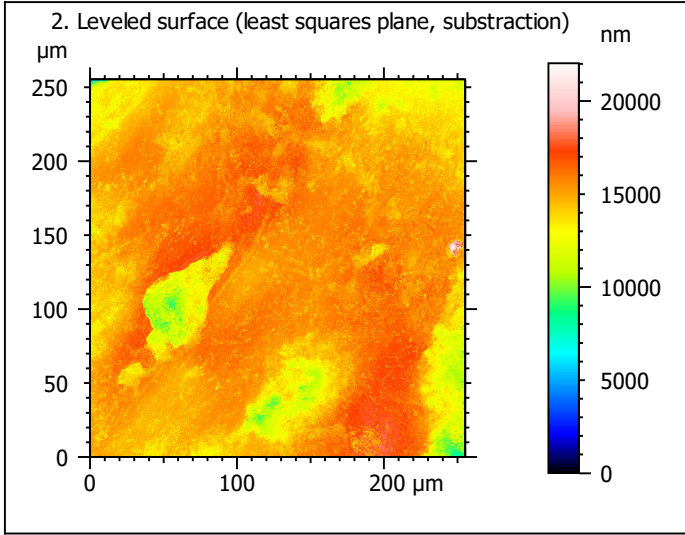
Template to process all surfaces acquired with the LSM with the 50x/0.75 and 50x/0.95 objectives.

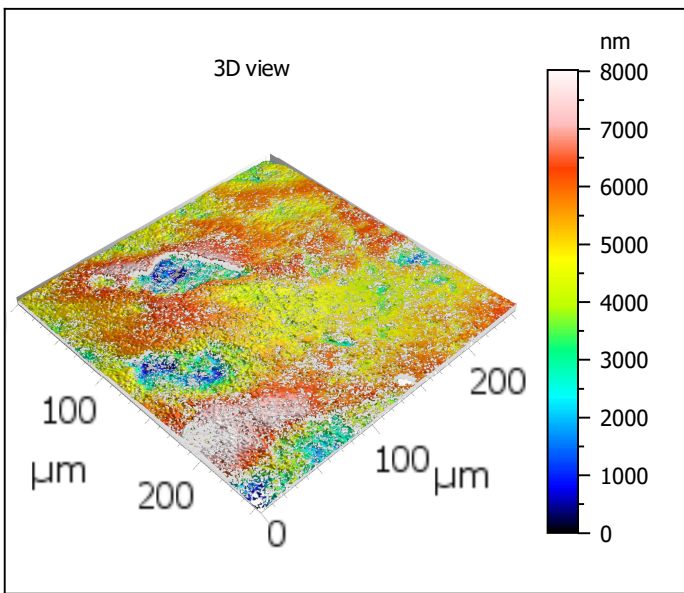
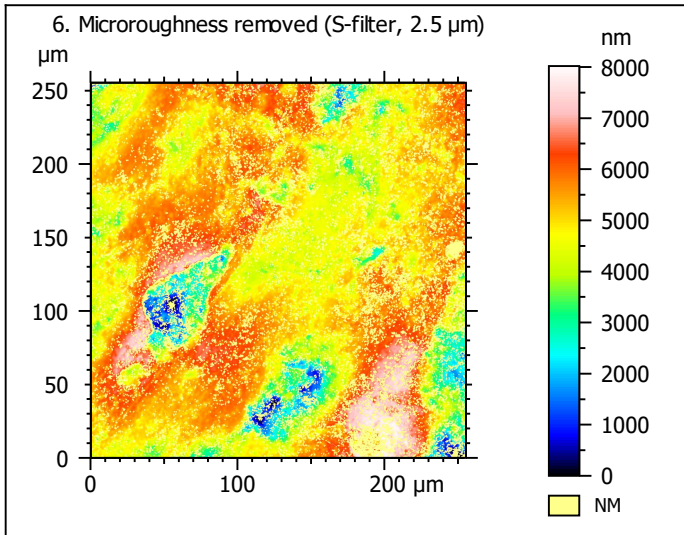
Processing



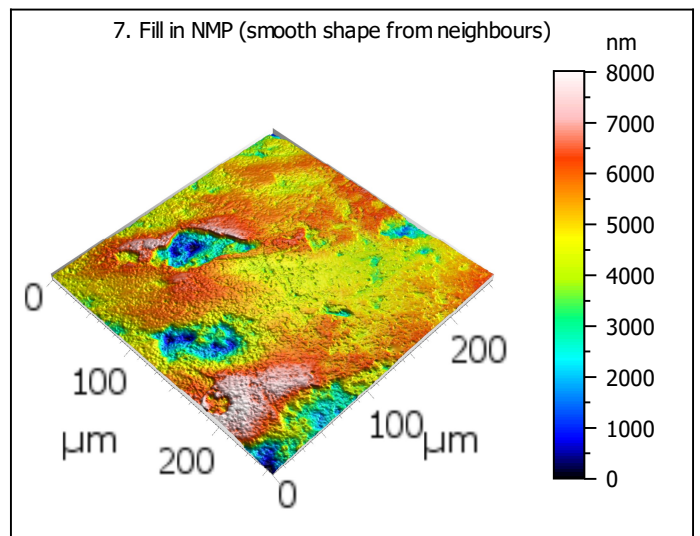
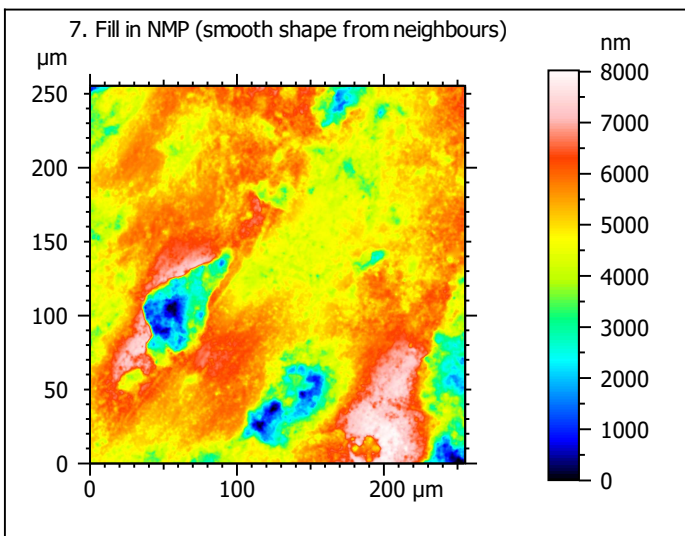
| Identity card | | | |
|------------------|---|--------|--|
| Name: | lime6-6_lsm_50x-0.75_...11_1000rot_surf3_Topo | | |
| Created on: | 9/11/2020 11:43:27 AM | | |
| Studiabile type: | Surface | | |
| Axis: | X | | |
| Length: | 255.3 | µm | |
| Size: | 1024 | points | |
| Spacing: | 0.2496 | µm | |
| Axis: | Y | | |
| Length: | 255.3 | µm | |
| Size: | 1024 | points | |
| Spacing: | 0.2496 | µm | |
| Axis: | Z | | |
| Layer type: | Topography | | |
| Length: | 25135 | nm | |
| Size: | 65532 | digits | |
| Spacing: | 0.3836 | nm | |
| NM-points ratio: | 0.000 % (0 Pts) | | |







| Identity card | | | |
|------------------|---|---------------|--|
| Name: | lime6-6_lsm_50x-0.75...filtered (As 2.500 μm) | | |
| File path: | C:\Users\marreiros.R...00rot_surf3_Topo.sur | | |
| Created on: | 9/11/2020 11:43:27 AM | | |
| Studiabile type: | Surface | | |
| Axis: | X | | |
| Length: | 255.3 | μm | |
| Size: | 1024 | points | |
| Spacing: | 0.2496 | μm | |
| Offset: | 0.000 | μm | |
| Axis: | Y | | |
| Length: | 255.3 | μm | |
| Size: | 1024 | points | |
| Spacing: | 0.2496 | μm | |
| Offset: | -255.3 | μm | |
| Axis: | Z | | |
| Layer type: | Topography | | |
| Length: | 8019 | nm | |
| Min: | -4907 | nm | |
| Max: | 3112 | nm | |
| Size: | 209070 | digits | |
| Spacing: | 0.03836 | nm | |
| NM-points ratio: | 24.09 % (252571 Pts) | | |

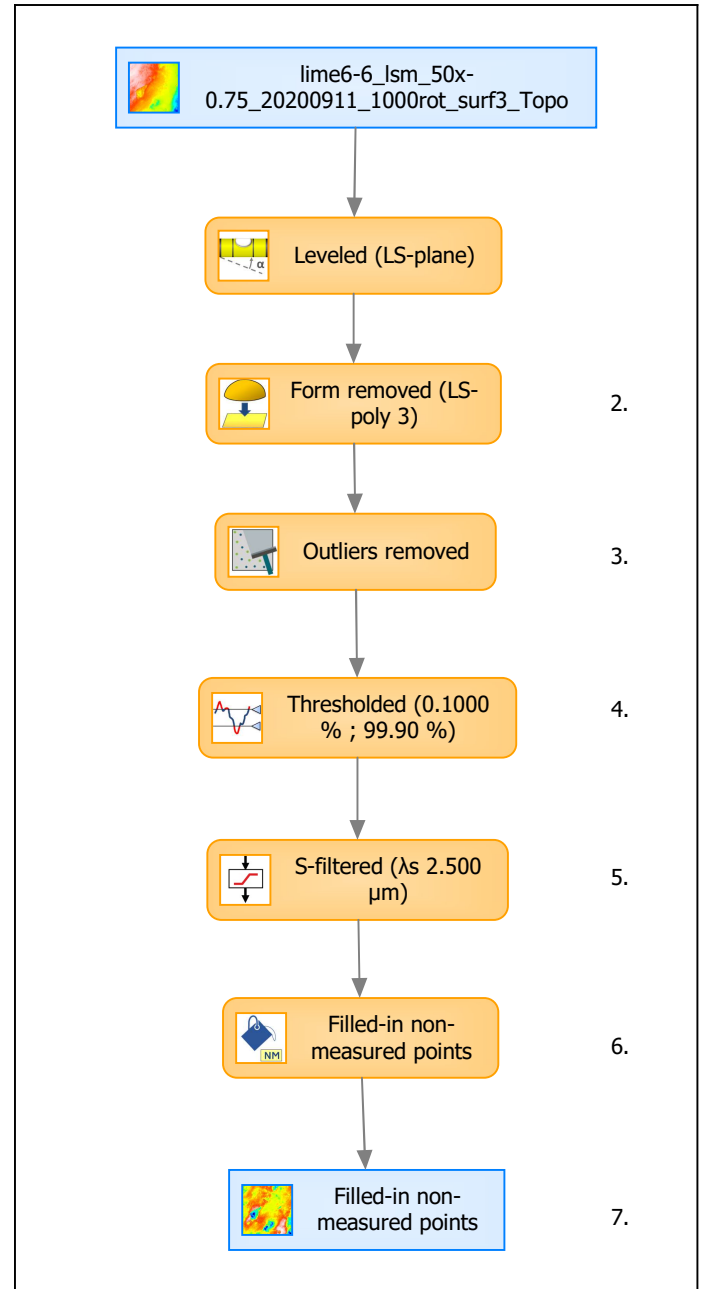


| Identity card | | | |
|------------------|--|--------|--|
| Name: | lime6-6_lsm_50x-0.75_...in non-measured points | | |
| Created on: | 9/11/2020 11:43:27 AM | | |
| Studiable type: | Surface | | |
| Axis: | X | | |
| Length: | 255.3 | μm | |
| Size: | 1024 | points | |
| Spacing: | 0.2496 | μm | |
| Axis: | Y | | |
| Length: | 255.3 | μm | |
| Size: | 1024 | points | |
| Spacing: | 0.2496 | μm | |
| Axis: | Z | | |
| Layer type: | Topography | | |
| Length: | 8019 | nm | |
| Size: | 209070 | digits | |
| Spacing: | 0.03836 | nm | |
| NM-points ratio: | 0.000 % (0 Pts) | | |

Analyses

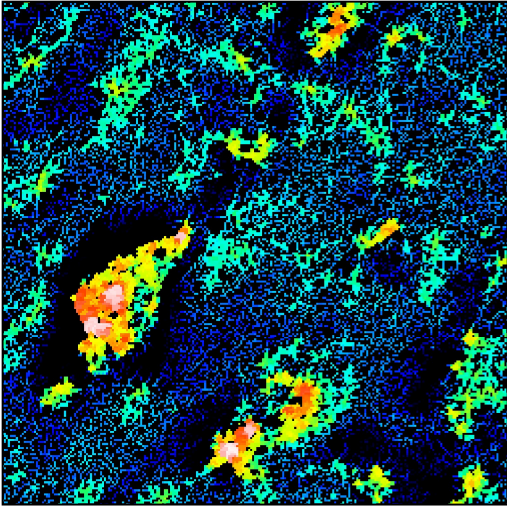
8. ISO 25178-2 parameters on surface #7

| ISO 25178 - Primary surface | | | |
|---|---------|----------------------------------|--|
| <i>F: [Workflow] Form removed (LS-poly 3)</i> | | | |
| <i>S-filter (λs): [Workflow] S-filtered (λs 2.500 μm)</i> | | | |
| Height parameters | | | |
| Sq | 1155 | nm | |
| Ssk | -0.8254 | | |
| Sku | 4.705 | | |
| Sp | 3043 | nm | |
| Sv | 4976 | nm | |
| Sz | 8019 | nm | |
| Sa | 852.3 | nm | |
| Functional parameters | | | |
| Smr | 2.924 | % | |
| Smc | 1223 | nm | |
| Sxp | 3079 | nm | |
| Spatial parameters | | | |
| Sal | 19.05 | μm | |
| Str | 0.5719 | | |
| Std | 28.01 | ° | |
| Hybrid parameters | | | |
| Sdq | 0.3285 | | |
| Sdr | 4.732 | % | |
| Functional parameters (Volume) | | | |
| Vm | 0.05839 | μm ³ /μm ² | |
| Vv | 1.282 | μm ³ /μm ² | |
| Vmp | 0.05839 | μm ³ /μm ² | |
| Vmc | 0.8338 | μm ³ /μm ² | |
| Vvc | 1.075 | μm ³ /μm ² | |
| Vvv | 0.2063 | μm ³ /μm ² | |



| Analyses: | |
|-------------------|-----|
| ISO 25178 | 8. |
| Furrow | 9. |
| Texture direction | 10. |
| Texture isotropy | 11. |
| SSFA | 12. |

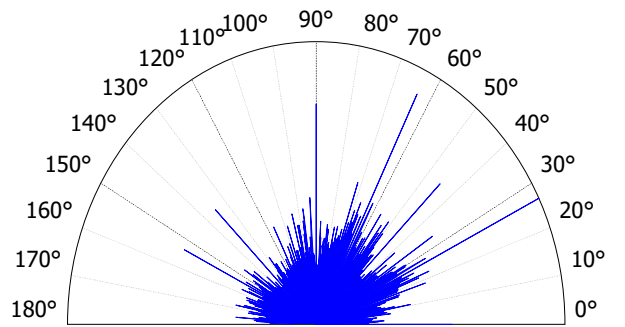
9. Furrow analysis on surface #7



All furrows are shown.

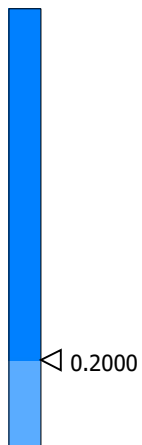
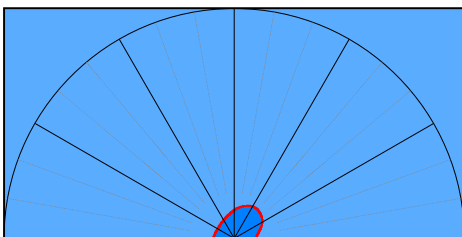
| Parameters | Value | Unit |
|--------------------------|-------|--------|
| Maximum depth of furrows | 4777 | nm |
| Mean depth of furrows | 1092 | nm |
| Mean density of furrows | 2973 | cm/cm2 |

10. Texture direction on surface #7



| Parameters | Value | Unit |
|------------------|-------|------|
| First direction | 26.46 | ° |
| Second direction | 63.51 | ° |
| Third direction | 90.01 | ° |

11. Texture isotropy on surface #7



| Parameters | Value | Unit |
|------------|-------|------|
| Isotropy | 51.86 | % |

12. SSFA on surface #7

