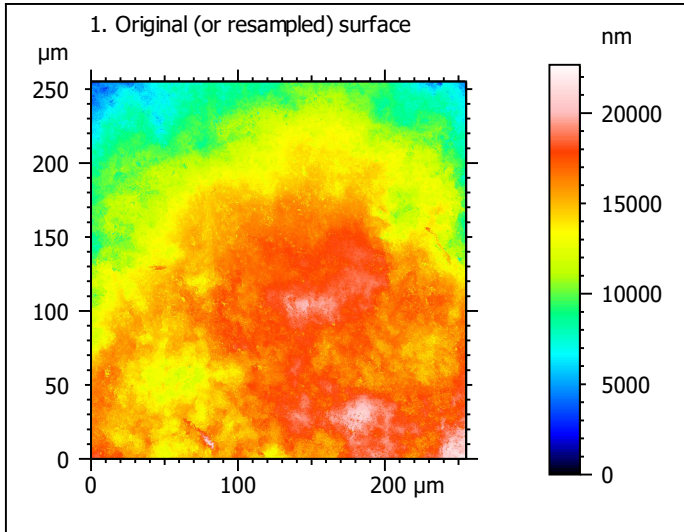


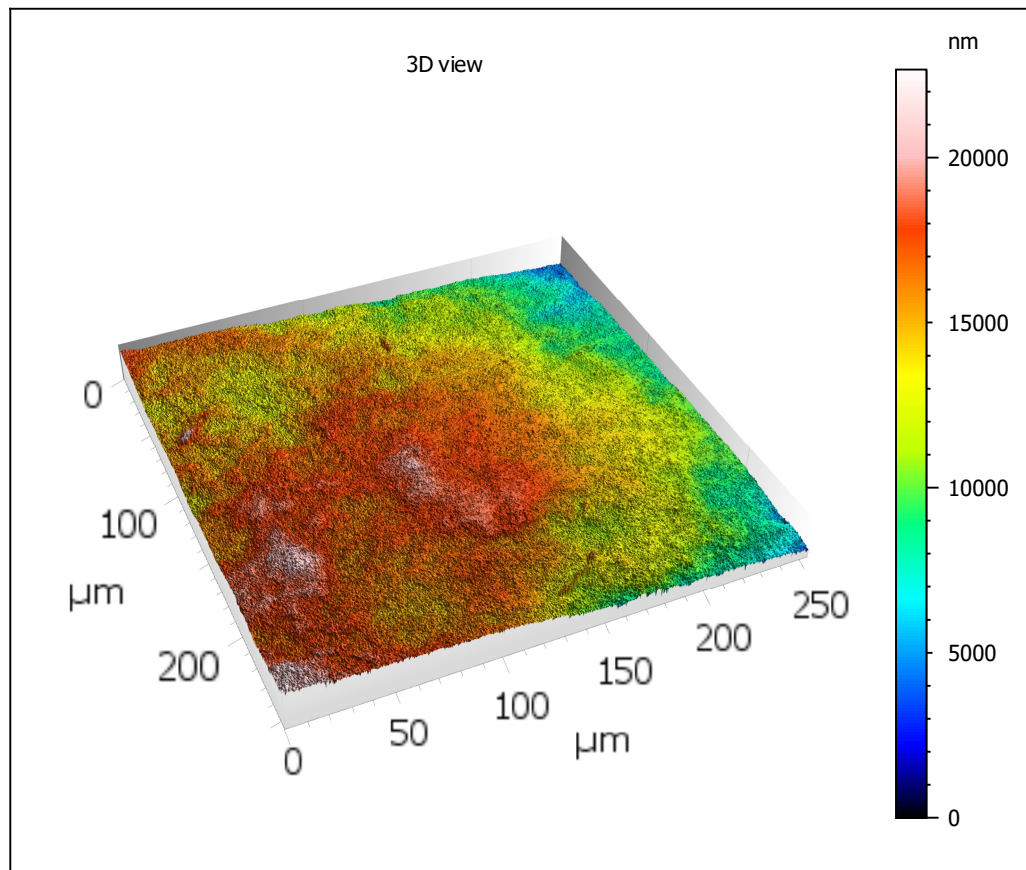
### Template - Processing analysis

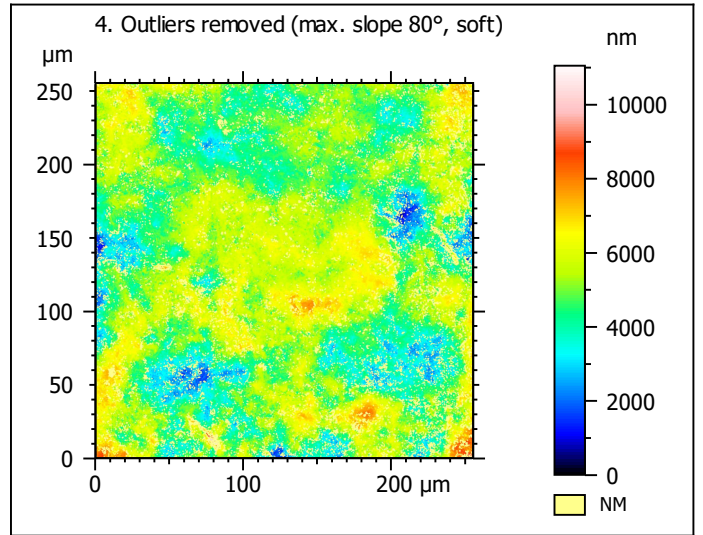
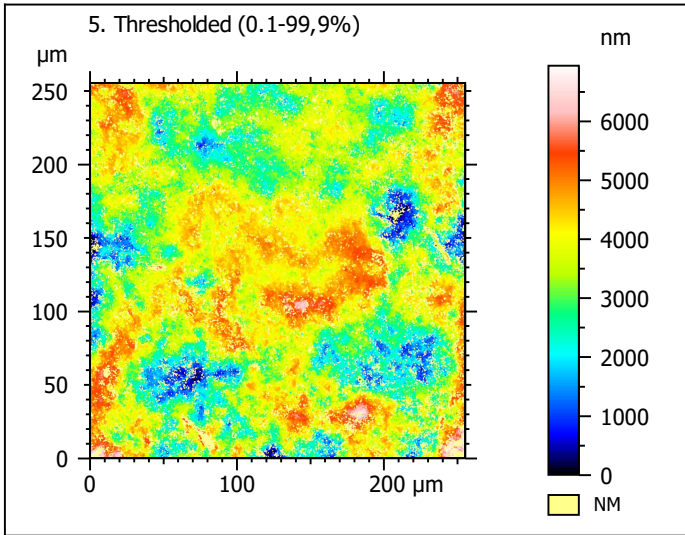
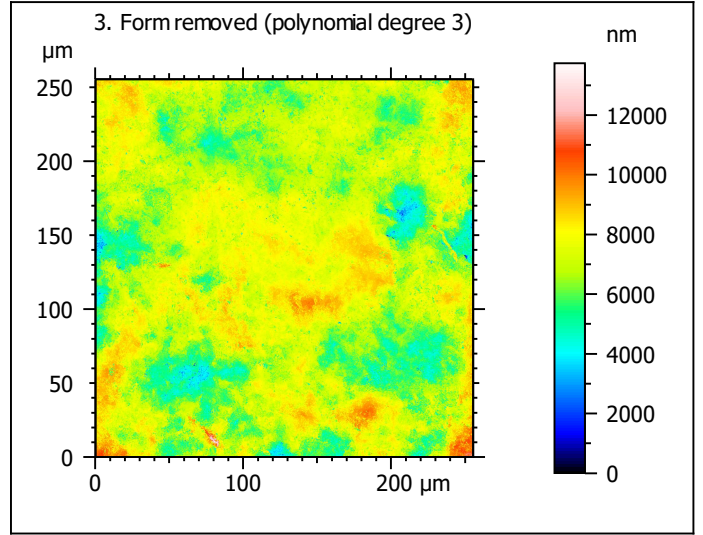
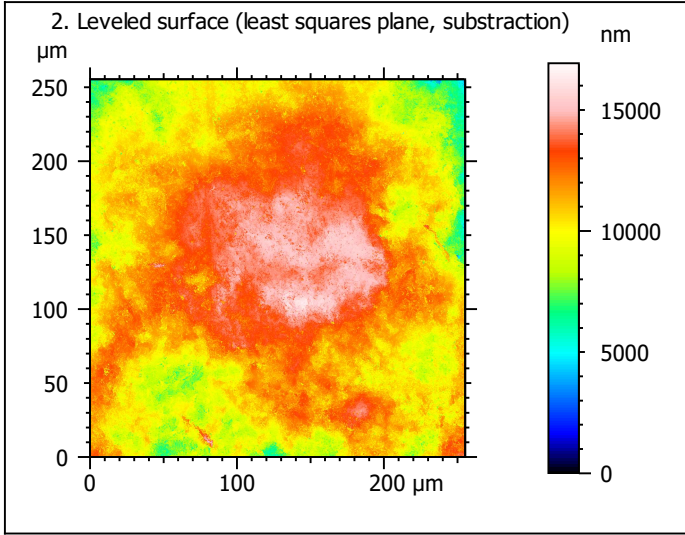
Template to process all surfaces acquired with the LSM with the 50x/0.75 and 50x/0.95 objectives.

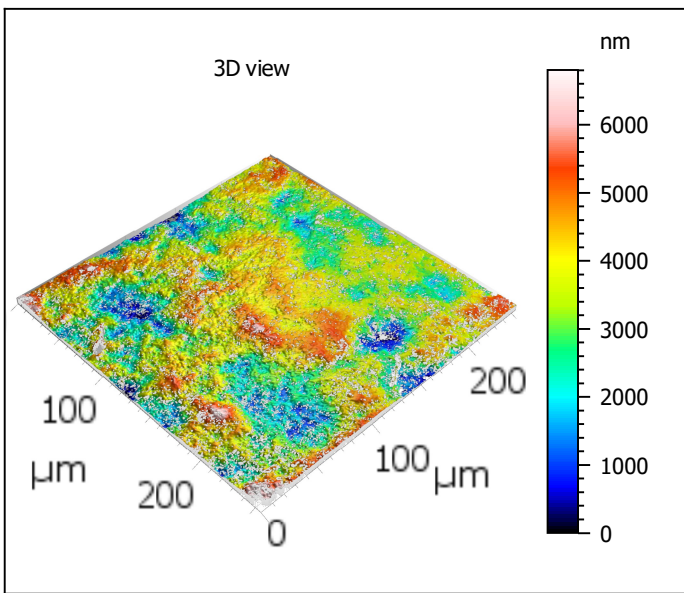
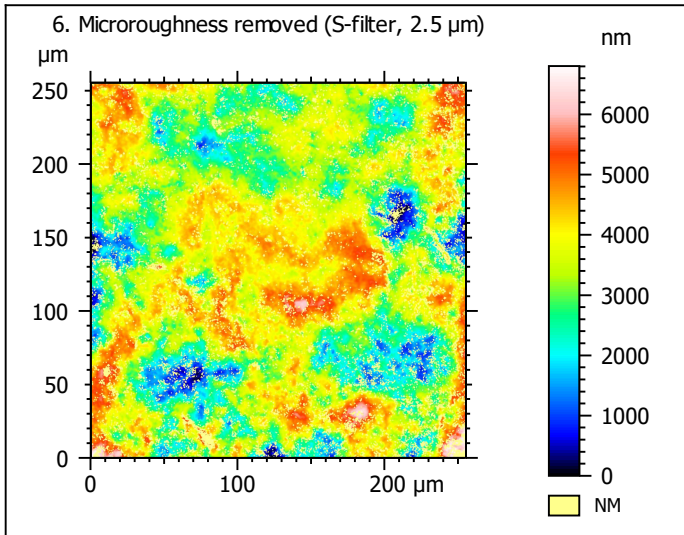
### Processing



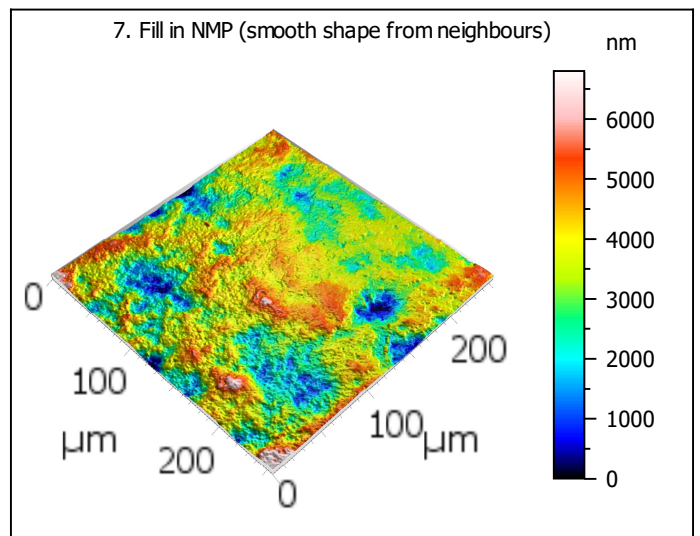
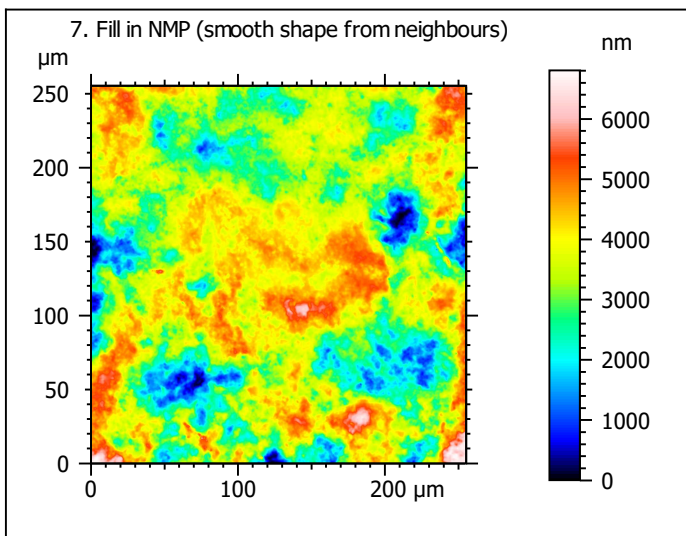
| Identity card    |  |        |  |
|------------------|--|--------|--|
| Name:            | lime6-1_lsm_50x-0.75_20200914_surf1_Topo |        |  |
| Created on:      | 9/14/2020 2:48:35 PM                     |        |  |
| Studiabile type: | Surface                                  |        |  |
| <b>Axis:</b>     | <b>X</b>                                 |        |  |
| Length:          | 255.3                                    | μm     |  |
| Size:            | 1024                                     | points |  |
| Spacing:         | 0.2496                                   | μm     |  |
| <b>Axis:</b>     | <b>Y</b>                                 |        |  |
| Length:          | 255.3                                    | μm     |  |
| Size:            | 1024                                     | points |  |
| Spacing:         | 0.2496                                   | μm     |  |
| <b>Axis:</b>     | <b>Z</b>                                 |        |  |
| Layer type:      | Topography                               |        |  |
| Length:          | 22667                                    | nm     |  |
| Size:            | 65532                                    | digits |  |
| Spacing:         | 0.3459                                   | nm     |  |
| NM-points ratio: | 0.000 % (0 Pts)                          |        |  |







| Identity card    |   |               |  |
|------------------|---|---------------|--|
| Name:            | lime6-1_lsm_50x-0.75...filtered (As 2.500 $\mu\text{m}$ ) |               |  |
| File path:       | C:\Users\marreiros.R...0914_surf1_Topo.sur                |               |  |
| Created on:      | 9/14/2020 2:48:35 PM                                      |               |  |
| Studiable type:  | Surface   |               |  |
| <b>Axis:</b>     | <b>X</b>  |               |  |
| Length:          | 255.3   | $\mu\text{m}$ |  |
| Size:            | 1024  | points        |  |
| Spacing:         | 0.2496  | $\mu\text{m}$ |  |
| Offset:          | 0.000   | $\mu\text{m}$ |  |
| <b>Axis:</b>     | <b>Y</b>  |               |  |
| Length:          | 255.3   | $\mu\text{m}$ |  |
| Size:            | 1024  | points        |  |
| Spacing:         | 0.2496  | $\mu\text{m}$ |  |
| Offset:          | -255.3  | $\mu\text{m}$ |  |
| <b>Axis:</b>     | <b>Z</b>  |               |  |
| Layer type:      | Topography  |               |  |
| Length:          | 6803  | nm            |  |
| Min:             | -3389   | nm            |  |
| Max:             | 3414  | nm            |  |
| Size:            | 196680  | digits        |  |
| Spacing:         | 0.03459   | nm            |  |
| NM-points ratio: | 15.16 % (158934 Pts)                                      |               |  |

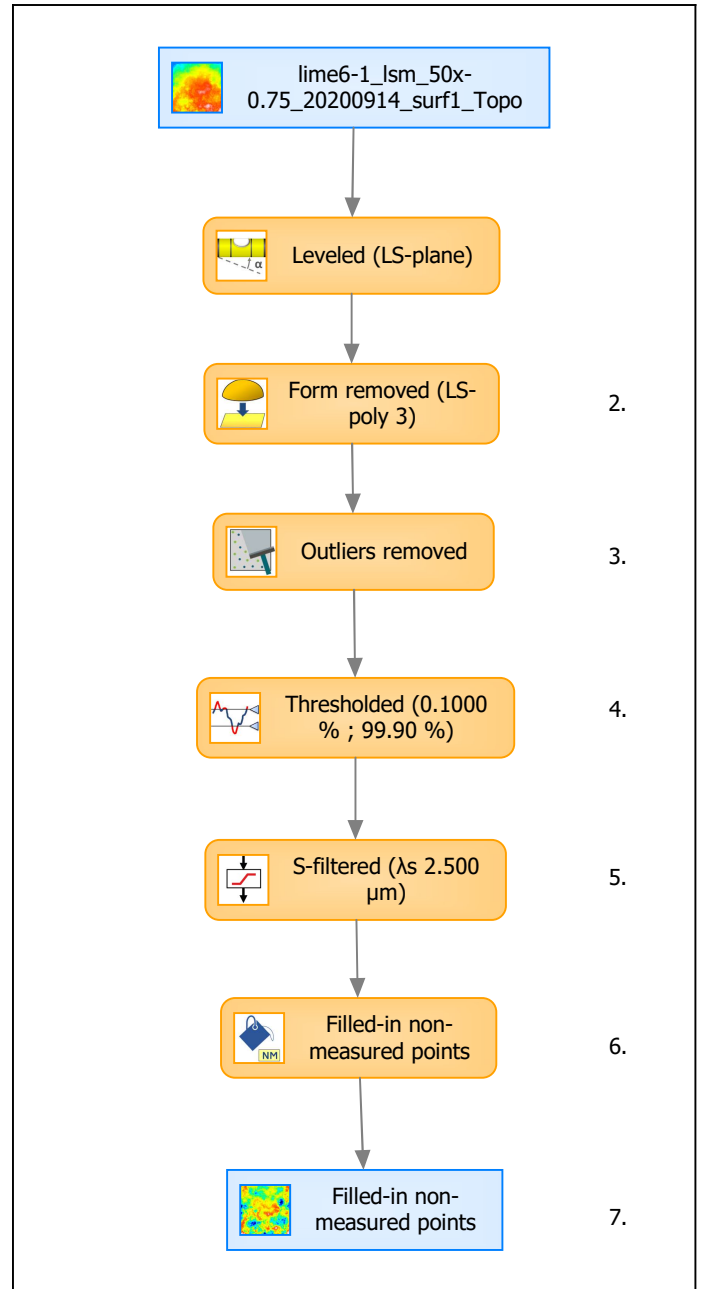


| Identity card    |  |        |  |
|------------------|--|--------|--|
| Name:            | lime6-1_lsm_50x-0.75_...in non-measured points |        |  |
| Created on:      | 9/14/2020 2:48:35 PM                           |        |  |
| Studiable type:  | Surface  |        |  |
| <b>Axis: X</b>   |  |        |  |
| Length:          | 255.3  | μm     |  |
| Size:            | 1024   | points |  |
| Spacing:         | 0.2496   | μm     |  |
| <b>Axis: Y</b>   |  |        |  |
| Length:          | 255.3  | μm     |  |
| Size:            | 1024   | points |  |
| Spacing:         | 0.2496   | μm     |  |
| <b>Axis: Z</b>   |  |        |  |
| Layer type:      | Topography                                     |        |  |
| Length:          | 6803   | nm     |  |
| Size:            | 196680   | digits |  |
| Spacing:         | 0.03459  | nm     |  |
| NM-points ratio: | 0.000 % (0 Pts)                                |        |  |

### Analyses

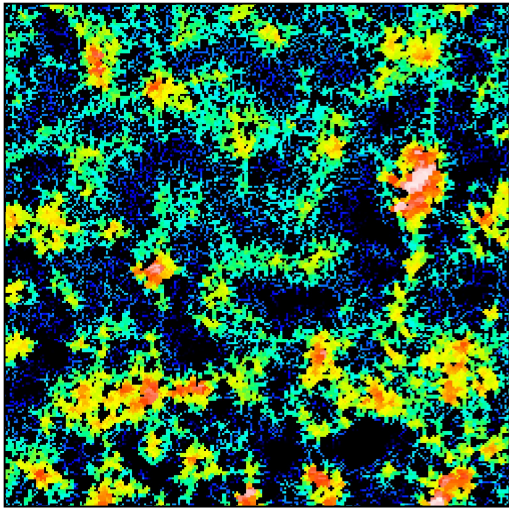
#### 8. ISO 25178-2 parameters on surface #7

| ISO 25178 - Primary surface                               |         |                                  |  |
|---|---------|----------------------------------|--|
| <i>F: [Workflow] Form removed (LS-poly 3)</i>             |         |                                  |  |
| <i>S-filter (λs): [Workflow] S-filtered (λs 2.500 μm)</i> |         |                                  |  |
| Height parameters   |         |                                  |  |
| Sq  | 1019    | nm                               |  |
| Ssk   | -0.2669 |                                  |  |
| Sku   | 3.184   |                                  |  |
| Sp  | 3376    | nm                               |  |
| Sv  | 3427    | nm                               |  |
| Sz  | 6803    | nm                               |  |
| Sa  | 805.7   | nm                               |  |
| Functional parameters                                     |         |                                  |  |
| Smr   | 0.7713  | %                                |  |
| Smc   | 1234    | nm                               |  |
| Sxp   | 2251    | nm                               |  |
| Spatial parameters  |         |                                  |  |
| Sal   | 26.13   | μm                               |  |
| Str   | 0.7948  |                                  |  |
| Std   | 86.99   | °                                |  |
| Hybrid parameters   |         |                                  |  |
| Sdq   | 0.3030  |                                  |  |
| Sdr   | 4.292   | %                                |  |
| Functional parameters (Volume)                            |         |                                  |  |
| Vm  | 0.04361 | μm <sup>3</sup> /μm <sup>2</sup> |  |
| Vv  | 1.277   | μm <sup>3</sup> /μm <sup>2</sup> |  |
| Vmp   | 0.04361 | μm <sup>3</sup> /μm <sup>2</sup> |  |
| Vmc   | 0.9124  | μm <sup>3</sup> /μm <sup>2</sup> |  |
| Vvc   | 1.143   | μm <sup>3</sup> /μm <sup>2</sup> |  |
| Vvv   | 0.1346  | μm <sup>3</sup> /μm <sup>2</sup> |  |



| Analyses:         |     |
|-------------------|-----|
| ISO 25178         | 8.  |
| Furrow            | 9.  |
| Texture direction | 10. |
| Texture isotropy  | 11. |
| SSFA              | 12. |

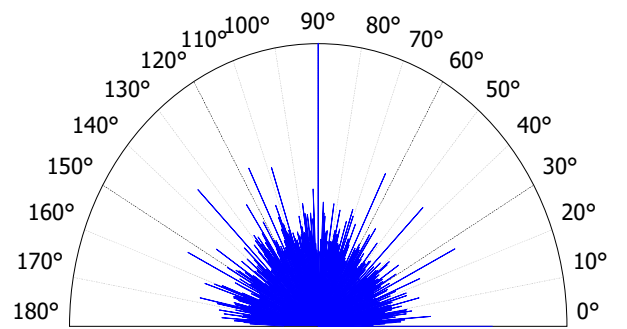
9. Furrow analysis on surface #7



All furrows are shown.

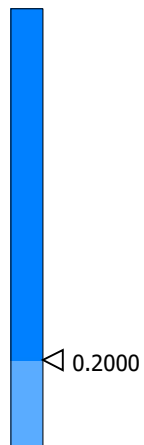
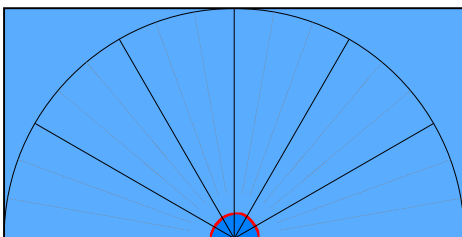
| Parameters               | Value | Unit   |
|--------------------------|-------|--------|
| Maximum depth of furrows | 3614  | nm     |
| Mean depth of furrows    | 1100  | nm     |
| Mean density of furrows  | 2798  | cm/cm2 |

10. Texture direction on surface #7



| Parameters       | Value | Unit |
|------------------|-------|------|
| First direction  | 90.02 | °    |
| Second direction | 180.0 | °    |
| Third direction  | 135.0 | °    |

11. Texture isotropy on surface #7



| Parameters | Value | Unit |
|------------|-------|------|
| Isotropy   | 89.58 | %    |

12. SSFA on surface #7

