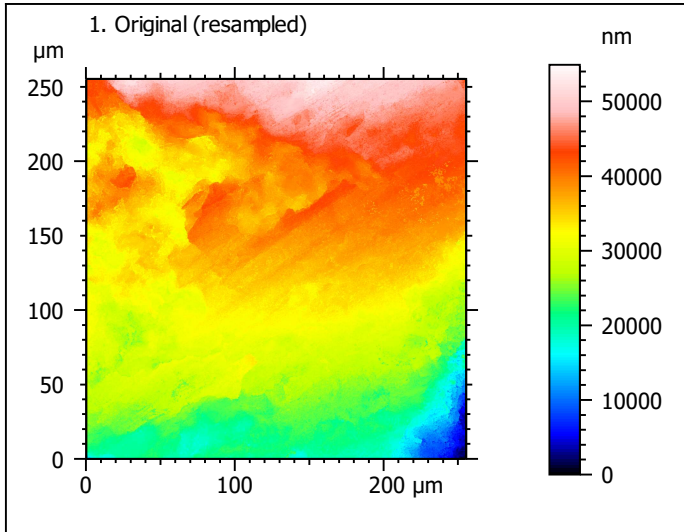


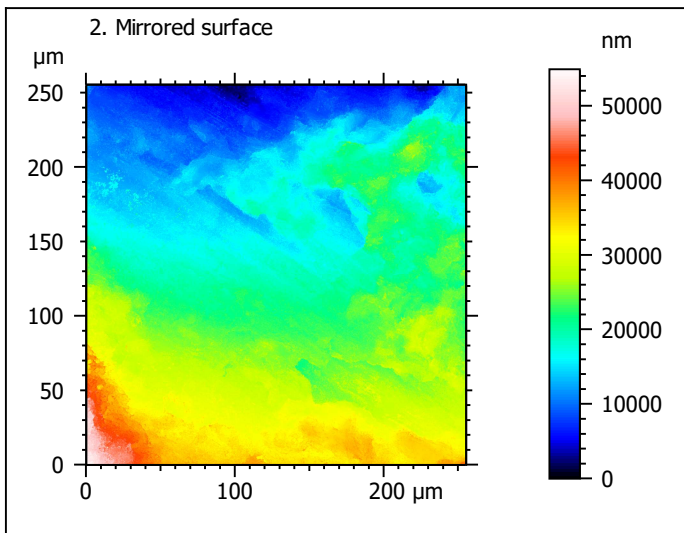
**Template - Mirroring surfaces (impressions)**

Template to mirror the surfaces in x and z that have been acquired with the LSM 800 based on moulds instead of the original artefact surface.

**Mirroring**



Identity card		
Name:	lime3-3_Ism_50x-0.75_...0914_surf1_Topo-mold	
Created on:	3/10/2020 4:25:37 PM	
Studiable type:	Surface	
<b>Axis:</b>	<b>X</b>	
Length:	255.5	µm
Size:	3000	points
Spacing:	0.08519	µm
<b>Axis:</b>	<b>Y</b>	
Length:	255.5	µm
Size:	3000	points
Spacing:	0.08519	µm
<b>Axis:</b>	<b>Z</b>	
Layer type:	Topography	
Length:	54908	nm
Size:	65532	digits
Spacing:	0.8379	nm
NM-points ratio:	0.000 % (0 Pts)	



Identity card		
Name:	lime3-3_Ism_50x-0.75_... > Mirrored (in X and Z)	
Created on:	3/10/2020 4:25:37 PM	
Studiable type:	Surface	
<b>Axis:</b>	<b>X</b>	
Length:	255.5	µm
Size:	3000	points
Spacing:	0.08519	µm
<b>Axis:</b>	<b>Y</b>	
Length:	255.5	µm
Size:	3000	points
Spacing:	0.08519	µm
<b>Axis:</b>	<b>Z</b>	
Layer type:	Topography	
Length:	54908	nm
Size:	65532	digits
Spacing:	0.8379	nm
NM-points ratio:	0.000 % (0 Pts)	