

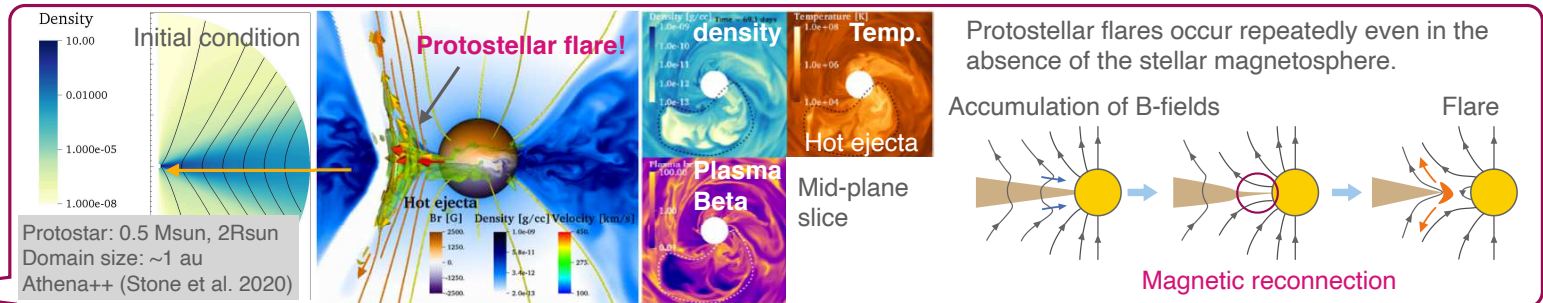
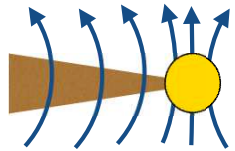
3D MHD Simulations of an accreting young star

Shinsuke Takasao (Osaka Univ.), Kengo Tomida (Tohoku Univ.), Kazunari Iwasaki (NAOJ), and Takeru K. Suzuki (Univ. of Tokyo)

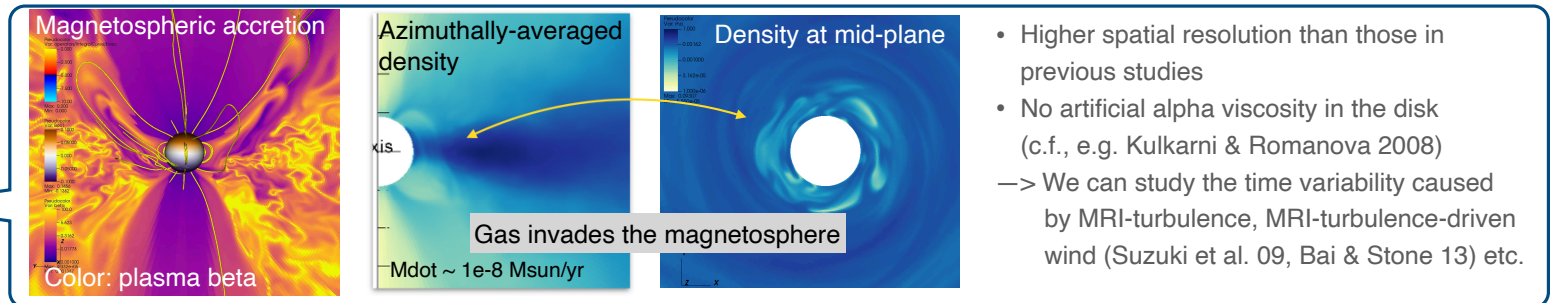
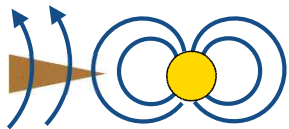
Takasao et al. 2018 ApJ, 857, 4
Takasao et al. 2019 ApJL, 878L, 10

We have been modeling the accretion onto young stars at different evolutionary stages / with different magnetic fields strength / with different field configurations using 3D MHD simulations.

Protostars



Classical T-Tauri stars



or

Herbig Ae/Be stars (weakly magnetized stars)

