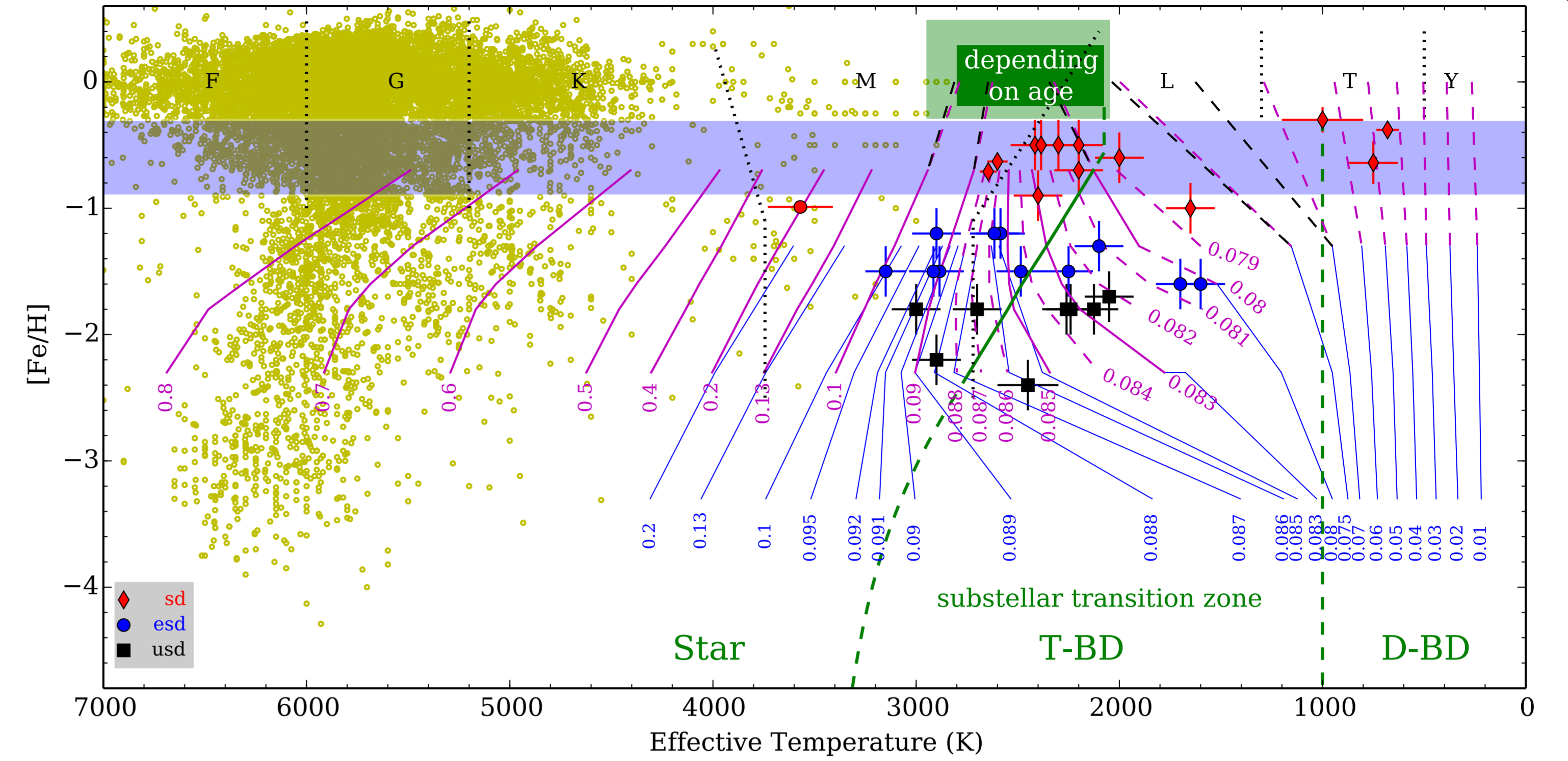
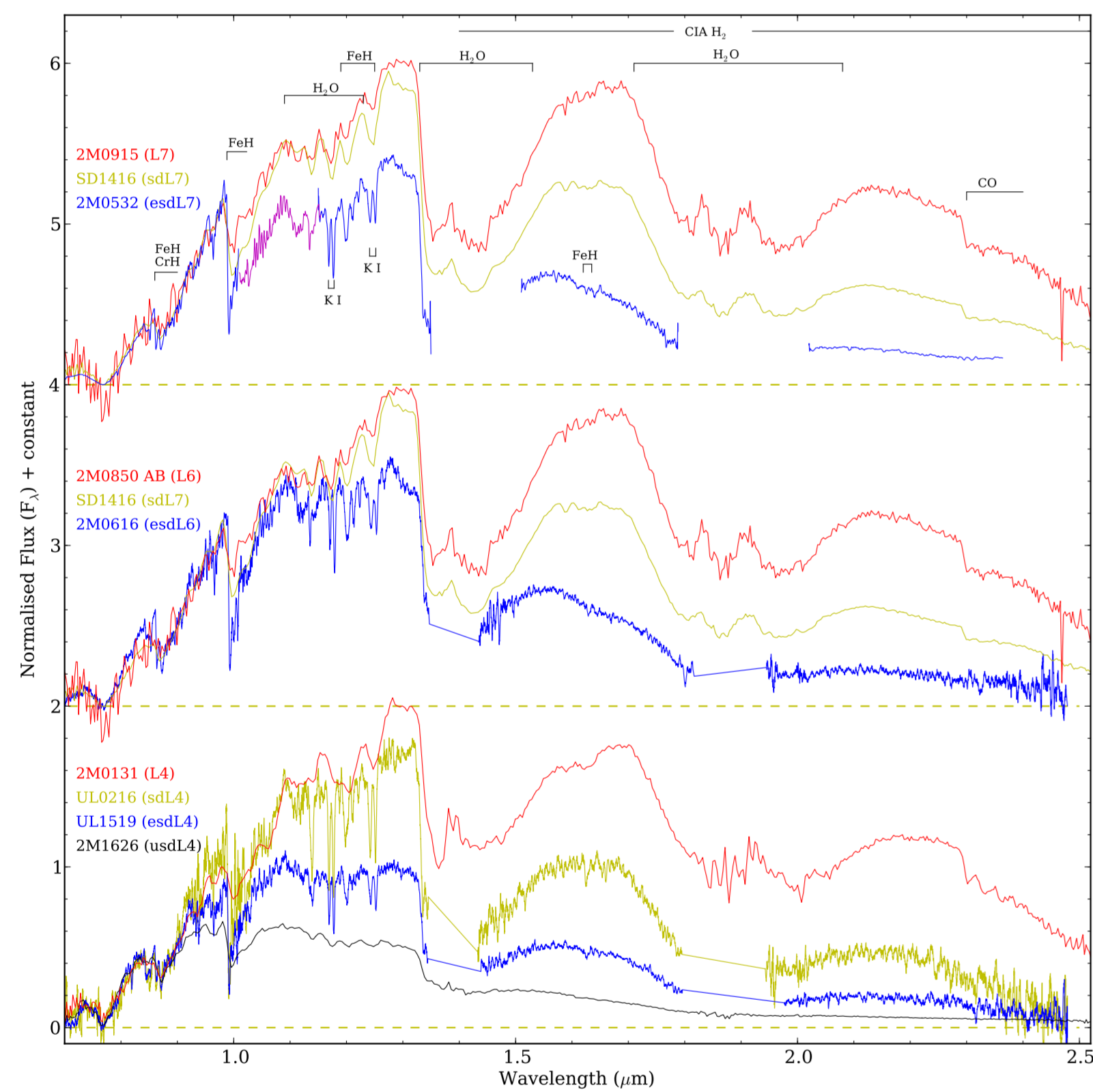


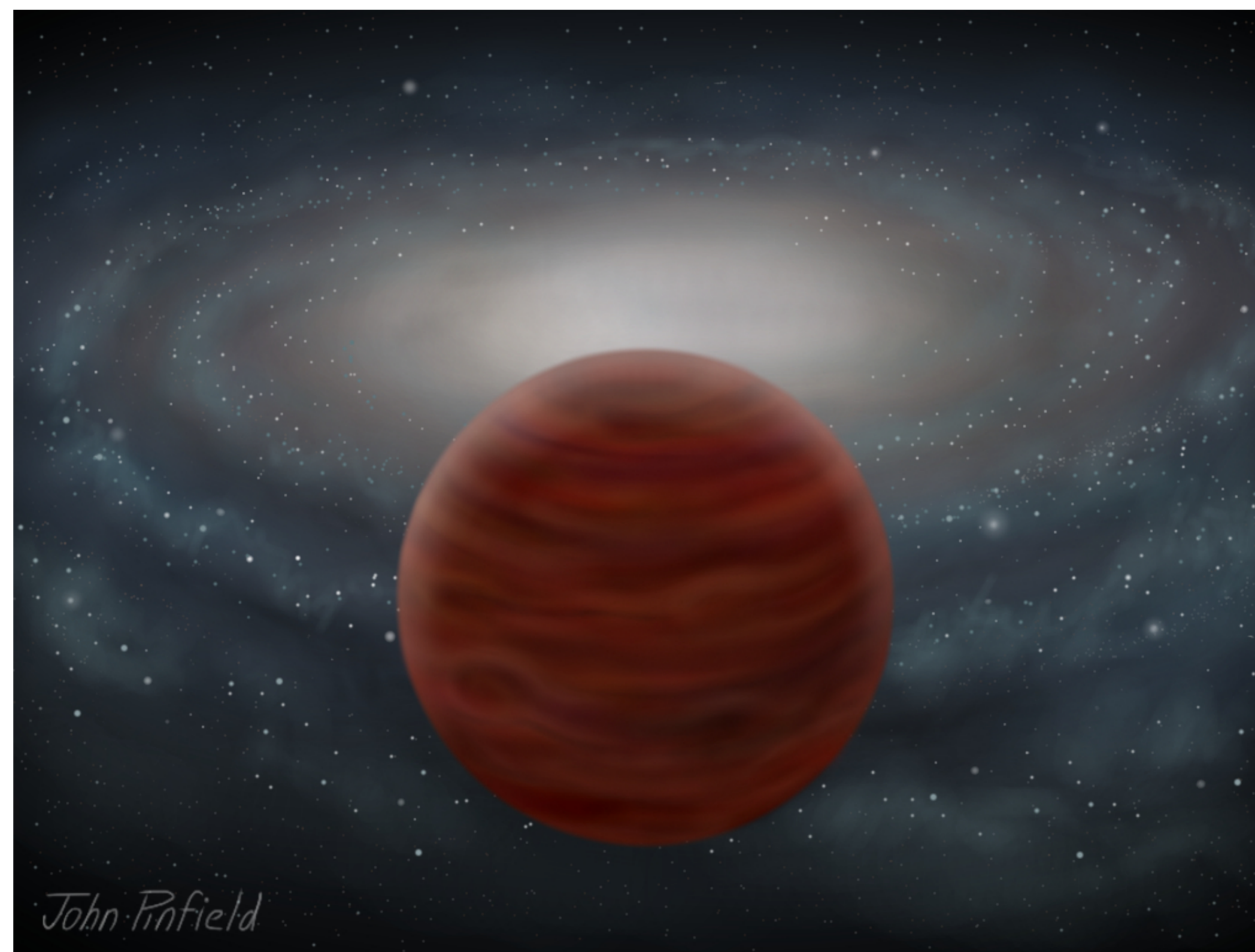
Discovering L subdwarfs by optical and near-infrared colours (Primeval – IV)



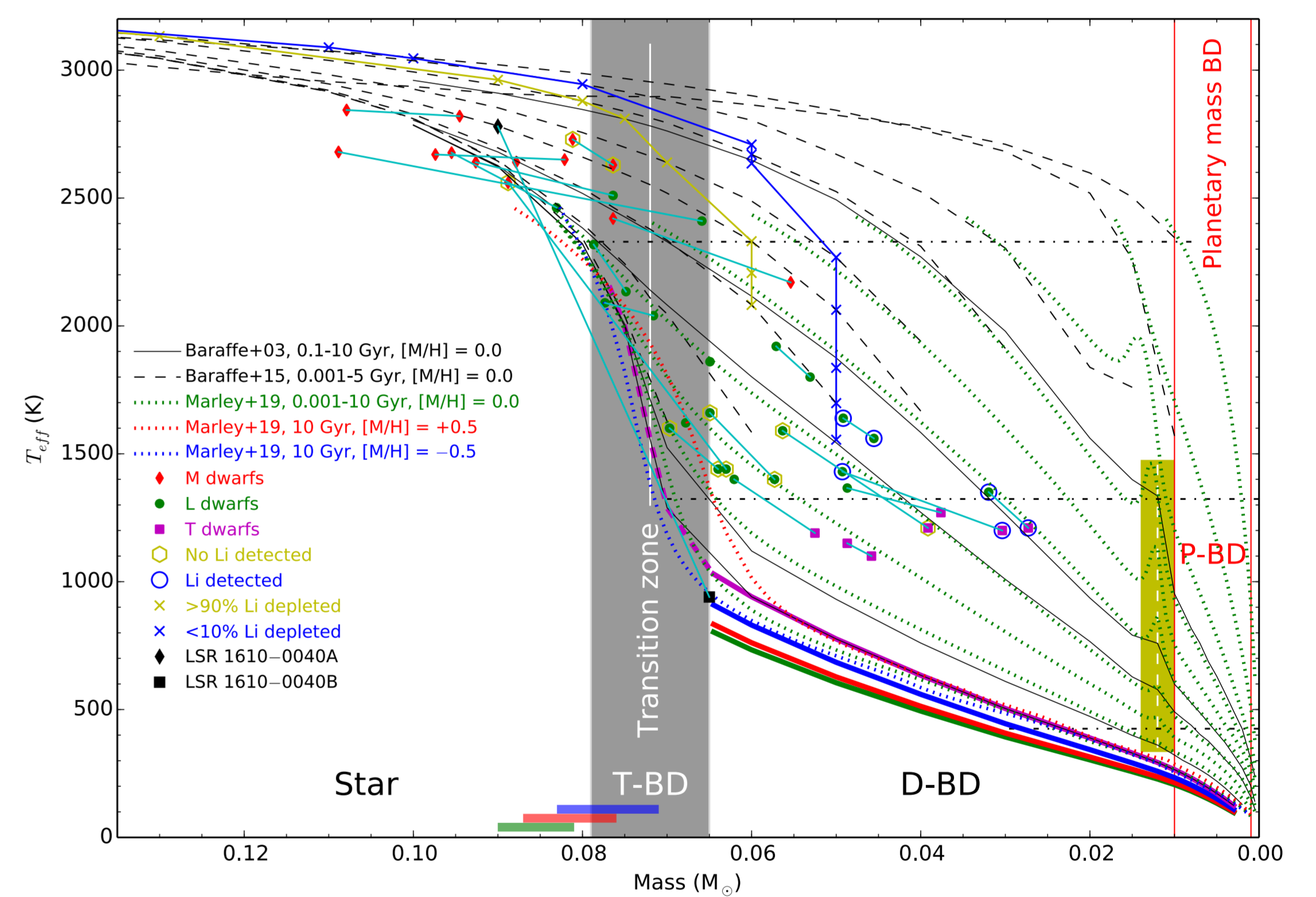
The substellar transition zone of old transitional brown dwarfs (T-BD) in the temperature-metallicity space (Primeval – II; Primeval – III)



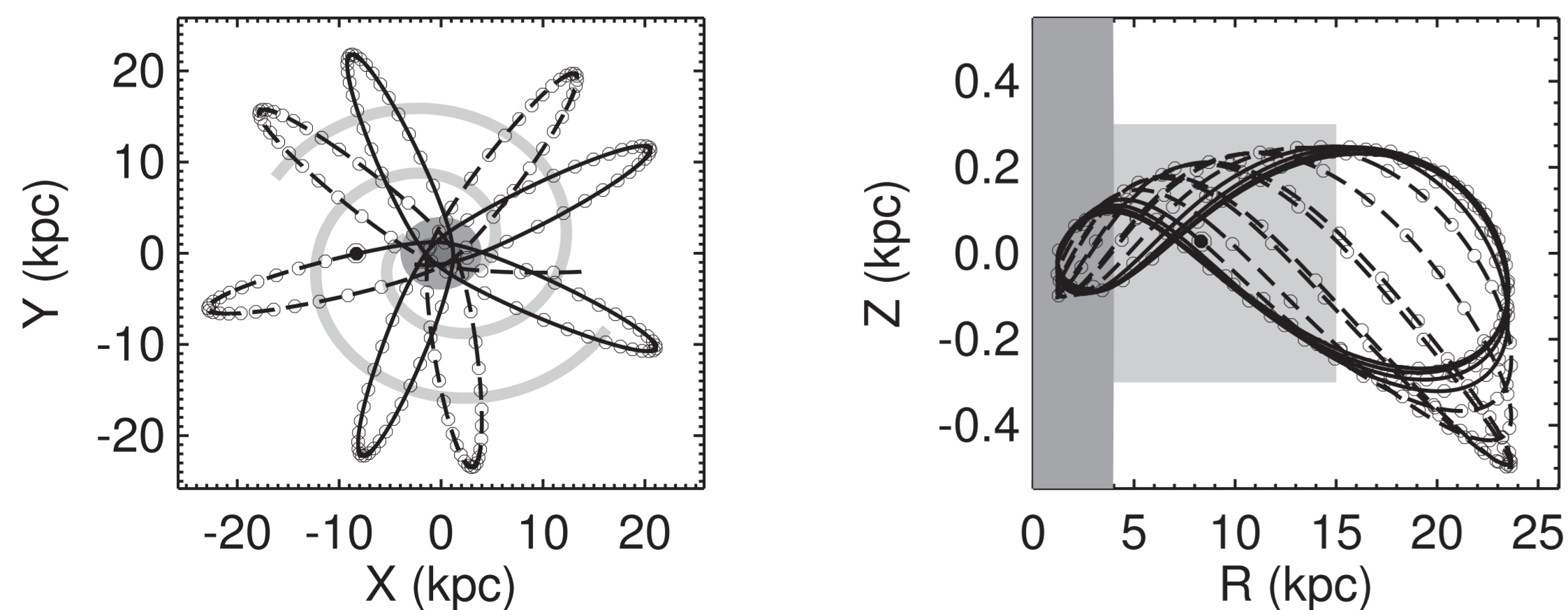
A new optical to near-infrared spectral classification scheme for L subdwarfs (Primeval – I)



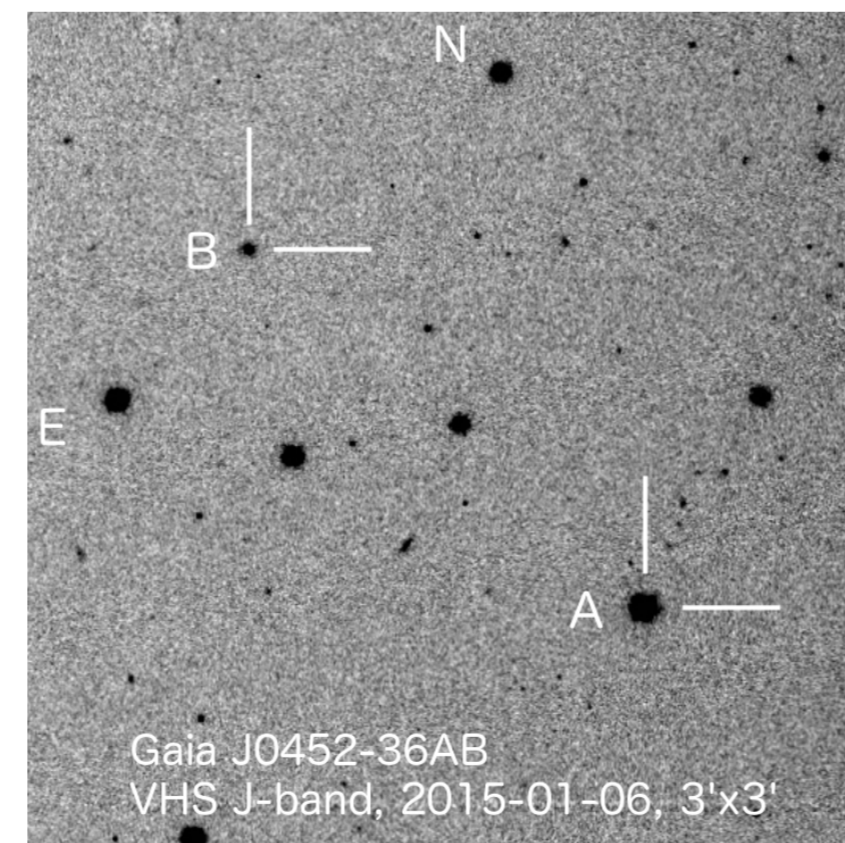
An artist's impression of the purest and most massive halo brown dwarf, SDSS J0104+15 (Primeval – II)



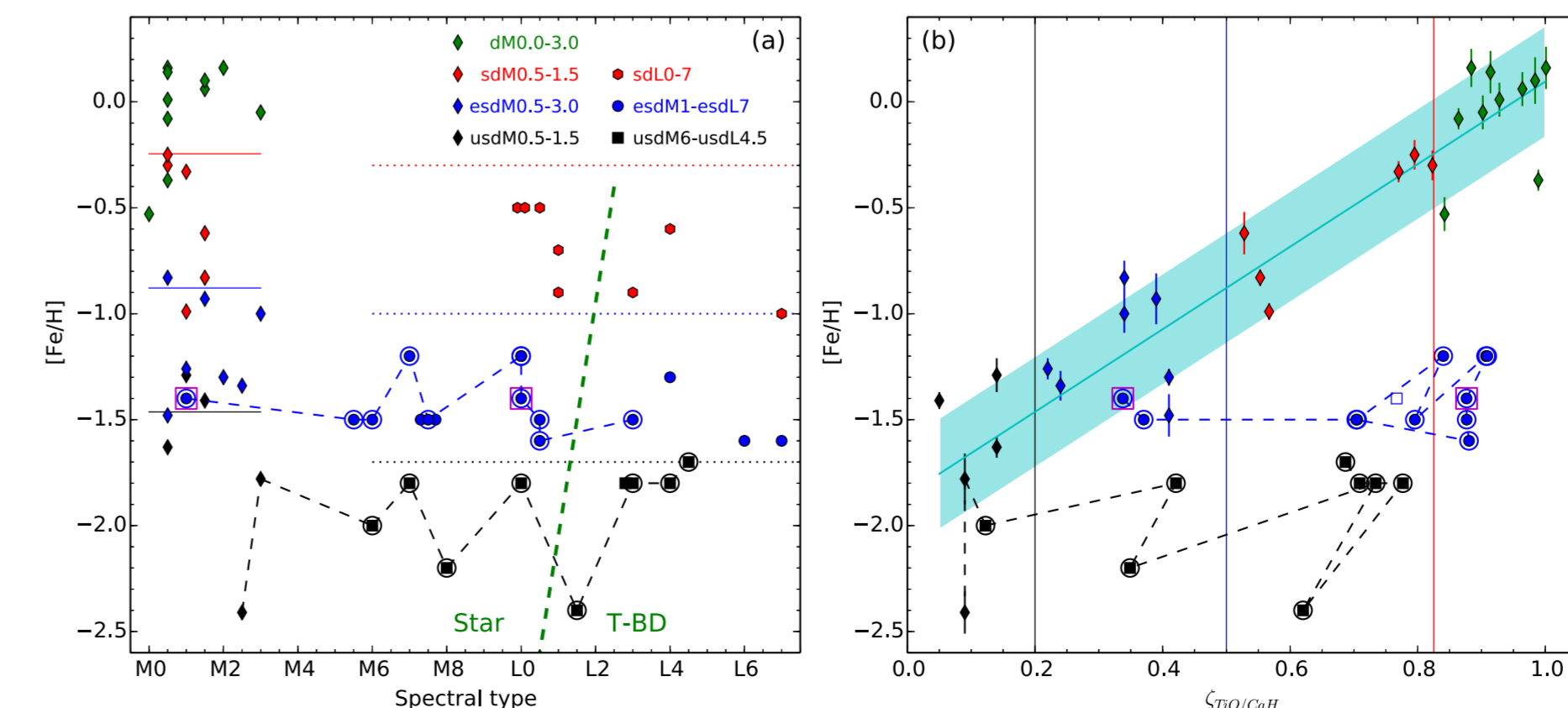
Isochrones of stars, transitional brown dwarfs (T-BD), and degenerate brown dwarfs (D-BD) (Primeval – VI)



A halo L3 subdwarf with prograde eccentric orbit in the Galactic plane (Primeval – V)



The first M+L subdwarf binary (Gaia J0452-36) and a test of the metallicity consistency of M subdwarfs (Primeval – VII)



The Primeval series on MNRAS