

Linzer biol. Beitr.	52/1	93-118	31.07.2020
---------------------	------	--------	------------

The Sphecid wasps of the genus *Cerceris* LATREILLE, 1802 of the "Biologiezentrum Linz"-Collection in Linz, Austria, from Subsaharan Africa and Madagascar, with description of five new species (Hymenoptera, Apoidea, Crabronidae)

Hermann DOLLFUSS

A b s t r a c t : A total of 2.679 specimens of the genus *Cerceris* LATREILLE (685♀♀, 1.994♂♂) including 61 species and 7 subspecies were examined. All information of localities, dates of capture and the names of the collectors are listed. Additionally, the following new species are described: *Cerceris malickyi* nov.sp., *Cerceris pseudowaltoni* nov.sp., *Cerceris saengeri* nov.sp., *Cerceris schalleri* nov.sp. and *Cerceris schwarzi* nov.sp.

K e y w o r d s : Apoidea, Crabronidae, Philanthinae, *Cerceris*

Introduction

I have received from the "Biologiezentrum Linz"-collection about 11.000 specimens of the genus *Cerceris* LATREILLE for determination. In this material there were a lot of specimens from Subsaharan Africa and some from Madagascar.

In addition to this I have received many named specimens and I also want to publish them. Another reason why I examined these specimens was to eliminate possible mistakes.

I used the key of G. Arnold (1931), but this key is outdated in many cases and so I made a provisional key for my own use, using the named specimens of the Museum of Natural History of Vienna (NHMW), which were determined mainly by H.N.Empey, H.Browns and F.F. Kohl. I also used the original descriptions of H. Brauns, G. Arnold and H.N. Empey. A revision of the genus *Cerceris* of this region should be made.

I describe five new species but there are probably more new species in this material which I could not name without having studied the types of all other species. Especially the males of *Cerceris* are very difficult to identify.

The names and abbreviations of specialists who identified many specimens are shown in the following list:

(Gui)K. M. Guichard, London, Great Britain

(JH)J. Halada, Czech Republik

If no abbreviation is given the specimens are determined by the author.

Material examined

Subfamily *Philanthinae* LATREILLE, 1802

Tribe *Cercerini* LEPELETIER DE SAINT FARGEAU, 1845

Genus *Cerceris* LATREILLE, 1802

Cerceris albicincta KLUG, 1845 (2♂♂)

M a l i : 1♂, Gao, 14.VIII.1991, leg. Max Schwarz (Gui); 1♂, 5 km E Hombori, 17.VIII.1991, leg. Max schwarz (Gui).

Cerceris albifrons F. SMITH, 1856 (1♀, 21♂♂)

N a m i b i a : 1♀, 1♂, 60 km SW Otavi, 14.I.1995, leg. J. Gusenleitner; 1♂, 15 km E Swakopmund, 4.II.1993, leg. Max Schwarz; 13♂♂, Gobabis, 40 km W Witulei, 16.II.1990, leg. Max Schwarz; 2♂♂, Tsumeb, 10 km SE Tsumeb, 8.III.1990, leg. Max Schwarz.

S o u t h A f r i c a : 4♂♂, Maputoland, SW Emanguzi, 29.I.2003, leg. Snizek.

Cerceris albolineata (CAMERON, 1908) (2♀♀, 1♂)

D e m o c r a t i c R e p u b l i c o f K o n g o : 1♀, Mount Hoyo, 6.IV.1977, leg. W. Nimmervoll.

T o g o : 1♀, Reg dPlateaux, SE Badou, Adossou, SE Zogbégan, 544m, 073328N 004108E, 25.IV.2008, leg. Oehlke; 1♂, Reg dPlateaux, NE Kpalimé, Lavie-Zodji, Regenwald, 574m 070115N 003940E, 18.IV.2008, leg. Oehlke.

Cerceris amakosa BRAUNS, 1926 (21♀♀, 123♂♂)

B e n i n : 6♂♂, Cove river Zou, 16.IV.2000, leg. J. Halada (JH).

B o t s w a n a : 3♂♂, Maun, Isl. Safari Lodge, I.1997, leg. Snizek (JH).

K e n y a : 9♀♀, 51♂♂, Voi (Tsavo) env., 8.-18.XI.1996, leg. Mi. Halada (JH); 1♀, 11♂♂, Voi (Tsavo), 11.-14.IV.1997, leg. Ma. Halada (JH); 2♀♀, 28♂♂, Voi (Tsavo) env., 22.IX.-2.XII.1996, leg. Mi. Halada (JH); 4♀♀, 19♂♂, Voi (Tsavo), 23.III.-4.IV.1997, leg. Ma. Halada (JH); 2♂♂, Voi, 10.XII.1999, leg. Snizek (JH); 1♂, Voi Tsavo, 13.-17.XII.1997, leg. Snizek; 1♂, Tsavo, E Buchuma, 28.XI.1997, leg. Snizek; 3♂♂, Voi env., 750m, 13.-19.XI.2011, leg. Snizek; 1♂, E729, Sosoma, 202 km E Thika, 26.IV.2008, leg. Snizek.

M a l i : 5♀♀, 6♂♂, 10 km S Mopti, 10.VIII.1991, leg. Max Schwarz (Gui); 2♀♀ 5♂♂, 10 km S Mopti, 8.VIII.1991, leg. Max Schwarz (Gui); 1♀, 10 km S Mopti, 7.VIII.1991, leg. Max Schwarz (Gui); 1♀, 40 km SW Segou, 31.VII.1991, leg. Max Schwarz (Gui); 2♀♀, 60 km NE San, 6.VIII.1991, leg. Max Schwarz (Gui); 1♀, 30 km NE San, 6.VIII.1991, leg. Max Schwarz (Gui); 2♀♀, 30 km NE San, 5.VIII.1991, leg. Max Schwarz (Gui); 9♂♂, 10 km S Mopti, 20.VIII.1991, leg. Max Schwarz (Gui); 1♂, 40 km W Mopti, 9.VIII.1991, leg. Max Schwarz (Gui); 1♂, 25 km N Bamako, 23.VIII.1991, leg. Max Schwarz (Gui); 1♂, 5 km S San, 3.VIII.1991, leg. Max Schwarz (Gui); 2♂♂, 30 km S San, 5.VIII.1991, leg. Max Schwarz (Gui); 2♂♂, 100 km NE San, 21.VIII.1991, leg. Max Schwarz (Gui).

N a m i b i a : 1♀, Rundu, 29.I.1993, leg. Max Schwarz; 1♀, Rundu, 31.I.1993, leg. Max Schwarz; 1♀, Kavangengeb., 1, Rundu, 10.III.1990, leg. Max Schwarz; 1♀, Tsumeb, 10 km SE Tsumeb, 8.III.1990, leg. Max Schwarz; 1♀, 40 km E Rundu, 21.I.1993, leg. J. Gusenleitner; 1♂, Rundu, 20.I.1993, leg. J. Gusenleitner; 1♂, Rundu, 18.I.1993, leg. J. Gusenleitner; 1♂, 15 km E Swakopmund, 8.II.1993, leg. J. Gusenleitner; 1♂, Otjivarongo, 15 km NW Otjivarongo, 3.III.1990, leg. Max Schwarz.

S e n e g a l : 1♂, 70 km W Tambaccounda, 13°57.39'N 14°15.92'W, 29.VI.2004, leg. Ma. Halada.

S o u t h A f r i c a : 9♂♂, Mpumalanga, Waterval Boven, 10.-11.I.2000, leg. J. Halada.

Z i m b a b w e : 1♂, Nyika, 50 km E Masvingo, 23.I.1998, leg. Ma. Halada (JH); 2♂♂, 25 km NE Samva, Nyaguir. (Bindura), 15.XI.1998, leg. J. Halada.

***Cerceris amatoria* ARNOLD, 1931 (3♀♀, 1♂)**

N a m i b i a : 1♀, Otjivarongo, 15 km NW Otjivarongo, 3.III.1990, leg. Max Schwarz; 2♀♀, Kavango Geb. 1, Rundu, 10.+11.III.1990, leg. Max Schwarz; 1♂, Rundu, 29.I.1993, leg. Max Schwarz.

***Cerceris berenice* DE BEAUMONT, 1966 (5♀♀, 62♂♂)**

M a l i : 3♀♀, 12♂♂, 10 km S Mopti, 7.VIII.1991, leg. Max Schwarz; 1♀, 21♂♂, 10 km S Mopti, 10.VIII.1991, leg. Max Schwarz; 1♀, 13♂♂, 10 km S Mopti, 20.VIII.1991, leg. Max Schwarz; 1♂, 60 km SW Segou, 1.VIII.1991, leg. Max Schwarz; 13♂♂, 10 km S Mopti, 8.VIII.1991, leg. Max Schwarz.

***Cerceris bicuspidata* ARNOLD, 1931 (4♂♂)**

N a m i b i a : 4♂♂, Outjo, 24 km S Kamanjab, 5.III.1990, leg. Max Schwarz.

***Cerceris bulawayoensis* BRAUNS, 1926 (1♂)**

N a m i b i a : 1♂, District Kavango 1, 20 km SW Rundu, neben Strasse B8, 18°03'07"S 19°37'52"E, 1100m, 14.II.1994, leg. H. & R. Rausch.

***Cerceris capito* LEPELETIER DE SAINT FARGEAU, 1845 (10♀♀, 22♂♂)**

M a l i : 1♀, 30 km NE Hombori, 18.VIII.1991, leg. Max Schwarz (Gui); 8♀♀, 13♂♂, 10 km S Mopti, 10.VIII.1991, leg. Max Schwarz (Gui); 1♀, 6♂♂, 10 km S Mopti, 20.VIII.1991, leg. Max Schwarz (Gui); 1♂, 130 km NE Mopti, 19.VIII.1991, leg. Max Schwarz (Gui); 2♂♂, 10 km S Mopti, 8.VIII.1991, leg. Max Schwarz (Gui).

***Cerceris curvitaris* SCHLETTERER, 1887 (1♀, 3♂♂)**

N a m i b i a : 1♀, 15 km E Swakopmund, 8.II.1993, leg. Max Schwarz; 1♂, 15 km E Swakopmund, 4.II.1993, leg. Max Schwarz.

S o u t h A f r i c a : 1♂, CP, Kalahari, Gemsbok Nat. Park, Nossob, 27.III.1990, leg. Max Schwarz; 1♂, CP, Olifantshoek, 24.III.1990, leg. Max Schwarz.

***Cerceris dentiventris* ARNOLD, 1945 (1♀)**

M a d a g a s c a r : 1♀, Special reserv. (Nosy Mangabe), 3.-6.I.2004, leg. Dolin, Andreeva & Andreev.

***Cerceris diodonta* SCHLETTERER, 1887 (3♀♀, 6♂♂)**

N a m i b i a : 1♀, 1♂, Otjivarongo, 3 km NE Kalkfeld, 2.III.1990, leg. Max Schwarz; 1♀, Tsumeb, 10 km SE Tsumeb, 8.III.1990, leg. Max Schwarz; 3♂♂, Tsumeb, 30 km E Namutoni, 7.III.1990, leg. Max Schwarz; 1♂, Grootfontein, 30 km NE Grootfontein, 9.III.1990, leg. Max Schwarz; 1♂, Rundu, 30.I.1993, leg. Max Schwarz.

N i g e r i a : 1♀, Panjam, Plateau province..?

***Cerceris discrepans* BRAUNS, 1926 (2♀♀)**

S o u t h A f r i c a : 1♀, CP, 60 km N Olifantshoek, 25.III.1990, leg. Max Schwarz; 1♀, CP, Kalahari, Gemsbok Nat. Park, Nossob, 27.III.1990, leg. Max Schwarz.

***Cerceris egena mombasae* ARNOLD, 1942 (1♀)**

N a m i b i a : 1♀, Rundu, 29.I.1993, leg. Max Schwarz.

Note: *Cerceris constricta* GUICHARD, 1993 is extremely similar, maybe this species is a synonym to *Cerceris egena* ARNOLD, 1931.

***Cerceris emeryana varilineata* CAMERON, 1905 (132♀♀, 187♂♂)**

M o z a m b i q u e : 1♂, 70 km N Maputo, 3.XII.2003, leg. J. Halada (JH).

N a m i b i a : 3♀♀, 2♂♂, Rundu, 18.I.1993, leg. J. Gusenleitner; 3♀♀, 7♂♂, Rundu, 17.I.1993, leg. J. Gusenleitner; 1♀, 3♂♂, Rundu, 19.I.1993, leg. J. Gusenleitner; 2♀♀, 126 km SW Rundu, 16.I.1993, leg. J. Gusenleitner; 1♀, 100 km SW Rundu, 25.I.1993, leg. J. Gusenleitner; 1♀, 60 km E Rundu, 21.I.1993, leg. J. Gusenleitner; 1♀, 60 km SW Otavi, 14.I.1993, leg. J. Gusenleitner; 2♀♀, 3♂♂, Rundu, 18.I.1993, leg. Max Schwarz; 2♀♀, 12♂♂, Rundu, 17.I.1993, leg. Max Schwarz; 1♀, Rundu, 23.I.1993, leg. Max Schwarz; 1♀, 25 km E Rundu, leg. Max Schwarz; 1♀, SW Rundu, 28.I.1993, leg. Max Schwarz; 2♀♀, Rehoboth, 23 km N Rehoboth, 17.II.1990, leg. Max Schwarz; 11♀♀, 4♂♂, Outjo, 24 km S Kamanjab, 5.III.1990, leg. Max Schwarz; 2♀♀, 1♂, Gobabis, 40 km W Witvlei, 16.II.1990, leg. Max Schwarz; 2♀♀, 1♂, Okohandja, 17 km W Okohandja, 19.II.1990, leg. Max Schwarz; 1♀, Windhoek, 53 km E Windhoek, 16.II.1990, leg. Max Schwarz; 1♀, Mariental, 65 km S Mariental, 10.II.1990, leg. Max Schwarz; 14♂♂, Rehoboth, 7 km N Rehoboth, 7.II.1990, leg. Max Schwarz; 9♂♂, Rehoboth, 7 km N Rehoboth, 15.II.1990, leg. Max Schwarz; 1♂, Rehoboth, 23 km N Rehoboth, 15.II.1990, leg. Max Schwarz; 1♂, 100 km SW Rundu, 12.III.1990, leg. Max Schwarz; 1♂, 100 km SW Rundu, 1.II.1993, leg. Max Schwarz; 2♂♂, Rundu, 10.III.1990, leg. Max Schwarz; 1♂, Rundu, 29.I.1993, leg. Max Schwarz; 1♂, SW Rundu, 16.I.1993, leg. Max Schwarz; 5♂♂, Karibib, 23 km N Karibib, 27.II.1990, leg. Max Schwarz; 1♂, Karibib, 15 km W Karibib, 28.II.1990, leg. Max Schwarz; 1♂, Karibib, 15 km W Karibib, 26.II.1990, leg. Max Schwarz; 5♂♂, Okohandja, Okohandja, 19.II.1990, leg. Max Schwarz; 1♂, Rehoboth, 15 km N Kalkrand, 14.II.1990, leg. Max Schwarz; 1♂, Windhoek, Aris, 25 km S Windhoek, 15.II.1990, leg. Max Schwarz; 1♂, 60 km SW Otavi, 14.I.1993, leg. Max Schwarz; 1♂, Rundu, 23.I.1993, leg. J. Gusenleitner; 1♂, 100 km SW Rundu, 1.II.1993, leg. J. Gusenleitner; 2♂♂, 100 km SW Rundu, 26.I.1993, leg. J. Gusenleitner; 1♀, 1♂, 40 km NE Grootfontein, 16.I.1993, leg. J. Gusenleitner; 2♀♀, 1♂, Grootfontein, 30 km NE Grootfontein, 9.III.1990, leg. Max Schwarz; 1♀, Kavangogeb. 1, Rundu, 11.III.1990, leg. Max Schwarz; 1♀, 100 km SW Rundu, 25.I.1993, leg. Max Schwarz; 6♂♂, Windhoek, 36 km E Windhoek, 16.II.1990, leg. Max Schwarz; 3♂♂, Kavangogeb. 1, Rundu, 10.III.1990, leg. Max Schwarz; 1♀, 100 km SW Rundu, 28.I.1993, leg. J. Gusenleitner; 1♀, Karibib, 15 km W Karibib, 26.II.1990, leg. Max Schwarz; 2♂♂, Rundu, 17.I.1993, leg. J. Gusenleitner; 1♂, 125 km SW Rundu, 16.I.1993, leg. J. Gusenleitner.

S o u t h A f r i c a : 64♀♀, 58♂♂, Maputoland, SW Emanguzi, 29.I.2003, leg. Snizek (det. JH and Dollfuss); 4♀♀, 7♂♂, KwazaZulu Natal Mbazwana, 6.XII.2002, leg. Ma. Halada (det. JH and Dollfuss); 2♀♀, 5♂♂, KwazaZulu Natal-N, Tembe Elephant Park, 8.XII.2002, leg. Ma. Halada (JH); 2♀♀, 4♂♂, KwazaZulu Natal, Tembe Elephant Park, 30.XI.2002, leg. Ma. Halada (JH); 1♀, 7♂♂, KwazaZulu Natal-NE, 20 km S Emanguzi, 2.+3.XII.2002, leg. Ma. Halada & Snizek (JH); 1♀, 9♂♂, KwazaZulu Natal, Tembe Elephant Park, 50m, Ndumo, 27°02'S 32°23'E, 30.XII.2007, leg. M. Halada (JH); 1♀, 3♂♂, Northern Transvaal, N Nylstrom, 24°40'S 28°30'E, 1200m, 14.I.2008, leg. M. Halada (JH); 1♀, Maputoland, 20 km S Emanguzi Mobela, 2.XII.2002, leg. Snizek (JH); 1♀, O.F.S., 30 km N Colesberg, Orange river, 25.XI.2002, leg. M. Halada (JH); 1♀, 1♂, Limpopo province, 35 km W Hoedspruit, 24°33'S 30°40'E, 470m, 15.+19.XII.2009, leg. J. Halada (JH); 2♂♂, Kawazulu Natal, Tembe Elephant Park, 50m, Ndumo, 27°02'S 32°23'E, 4.+10.I.2008, leg. M. Halada (JH); 1♂, North Cape, N Kimberley, 28°35'S 24°45'E, 1150m, 27.XII.2007, leg. M. Halada (JH); 1♂, NW Limpopo, Thabazimbi, 12.XII.2008, leg. Snizek (JH); 1♂, Maputoland, SE Ndumo, 24.I.2003, leg. Snizek (JH); 1♂, Maputoland, Tembe Elephant Park env., (Jozini), 22.I.2003, leg. Krivan; 1♂, CP, Olifantshoek, 24.III.2090, leg. Max Schwarz.

***Cerceris erythrosoma* SCHLETTERER, 1887 (10♀♀, 65♂♂)**

N a m i b i a : 2♀♀, 10♂♂, Rundu, 31.I.1993, leg. Max Schwarz; 2♀♀, 9♂♂, Rundu, 22.I.1993, leg. J. Gusenleitner; 1♀, 4♂♂, 29.+30.I.1993, leg. J. Gusenleitner; 2♀♀, Rundu, 20.+30.I.1993, leg. Max Schwarz; 9♂♂, Rundu, 19.+20.I.1993, leg. J. Gusenleitner; 20♂♂, Rundu, 18.-29.I.1993, leg. Max Schwarz; 2♂♂, Rundu, 18.I.1993, leg. J. Gusenleitner.

S o u t h A f r i c a : 2♀♀, 11♂♂, CP, Olifantshoek, 24.+25.III.1990, leg. Max Schwarz.

***Cerceris fingo* BRAUNS, 1926 (9♂♂)**

K e n y a : 1♂, Voi (Tsavo) env., 22.XI-2.XII.1996, leg. Mi. Halada; 2♂♂, Voi env., Sagala env., 750m, 13.-19.XI.2011, leg. Snizek; 1♂, Voi, 10.XII.1999, leg. Snizek.

N a m i b i a : 2♂♂, Rundu, 18.+20.I.1993, leg. J. Gusenleitner; 2♂♂, Rundu, 19.+22.I.1993, leg. Max Schwarz.

S o u t h A f r i c a : 1♂, Kwazulu Natal, Ladysmith, 20.I.2003, leg. Snizek.

***Cerceris fischeri nobilitata* CAMERON, 1905 (53♀♀, 285♂♂)**

Note: This subspecies is probably only a colour variation of *Cerceris fischeri* SPINOLA.

B e n i n : 3♀♀, 28♂♂, Cove, river Zou, 10.IV.2000, leg. J. Halada (JH).

E t h i o p i a : 1♀, 10♂♂, Sidamo province, 40 km W Sodo, 1130m, 12.IV.2007, leg. J. Halada (JH); 1♂, Gamo Gofa province, 45 km SE Arba Minch, 1200m, 15.IV.2007, leg. J. Halada.

G h a n a : 1♂, Greater Accra, Accra, Nungua, 5°37'N 0°06'W, 22.VIII.2012, leg. M. & J. Schwarz.

K e n y a : 3♀♀, 10♂♂, Mwingi, Kangonde vadi, 18.IV.2007, leg. M. Halada (JH); 35♂♂, Voi (Tsavo) env. 22.XI-2.XII.1996, leg. Mi. Halada & Snizek (JH); 24♂♂, Voi (Tsavo), 23.III-4.IV.1997, leg. Ma. Halada (JH); 1♂, Voi, 22.IX.1999, leg. Snizek (JH); 2♂♂, Yatta, Athi river, 17.IV.2007, leg. M. Halada; 1♂, E Mwingi, 14.V.2007, leg. M. Halada; 1♂, W Mwingi, 14.V.2007, leg. M. Halada; 1♂ E Taveta, 7.IV.2007, leg. M. Halada; 1♂, Makindu, 16.IV.2007, leg. M. Halada; 1♂, Voi S Foot Sagala, 12.VII.2007, leg. Snizek; 7♂♂, Voi, 10.XII.1999, leg. Snizek; 1♀, 42♂♂, Voi (Tsavo) env., 8.-18.XI.1996, leg. Mi. Halada; 2♂♂, Voi (Tsavo), 11.-14.IV.1997, leg. Ma. Halada; 2♂♂, Voi (Tsavo), 13.-17.XII.1997, leg. Snizek; 1♂, Voi env., Sagala env., 750m, 13.-19.II.2011, leg. Snizek.

M a l a w i : 1♂, Mulanie Mts. Env., 23.-26.XII.2001, leg. J. Halada; 2♂♂, 50 km SW Blantrye Chikwawa, 22.XII.2001, leg. J. Halada.

M a l i : 1♀, Kati, 25 km N Bamako, 23.VIII.1991, leg. Max Schwarz (Gui); 1♂, 10 km S Mopti, 10.VIII.1991, leg. Max Schwarz (Gui).

N a m i b i a : 3♀♀, Outjo, 55 km W Outjo, 4.III.1990, leg. Max Schwarz; 2♀♀, 2♂♂, Damaraland, 38 km W Khorixas, 4.+5.III.1990, leg. Max Schwarz; 2♀♀, Gobabis, 40 km W Witvei, 16.II.1990, leg. Max Schwarz; 1♀, Outjo, Okaukueje, 6.III.1990, leg. Max Schwarz; 2♀♀, Karibib, 65 km SW Usakos, 24.II.+1.III.1990, leg. Max Schwarz; 1♀, Windhoek, Aris, 25 km S Windhoek, 5.II.1990, leg. Max Schwarz; 1♀, 2♂♂, Outjo, 24 km S Kamanjab, 5.III.1990, leg. Max Schwarz; 1♀, Outjo, Okaukueje, 6.III.1990, leg. Max Schwarz; 1♀, Karibib, 65 km SW Usakos, 24.II.1990, leg. Max Schwarz; 1♀, Karibib, 65 km SW Usakos, 1.III.1990, leg. Max Schwarz; 2♀♀, 6♂♂, Gobabis, 40 km W Witvei, 16.II.1990, leg. Max Schwarz; 1♂, Tsumeb, 10 km SE Tsuneb, 8.III.1990, leg. Max Schwarz; 19♂♂, Otjiwarongo, 15 km NW Otjiwarongo, 3.III.1990, leg. Max Schwarz; 2♂♂, Tsuneb, 30 km E Namutoni, 7.III.1990, leg. Max Schwarz; 1♂, Otjiwarongo, 20 km NE Otjiwarongo, 13.III.1990, leg. Max Schwarz; 4♂♂, 15 km E Swakopmund, 4.II.1993, leg. Max Schwarz & J. Gusenleitner; 3♂♂, Meteorite W Grootfontein, 15.I.1993, leg. J. Gusenleitner. 2♂♂, Rundu, 31.I.1993, leg. Max Schwarz; 1♂, Otjiwarongo, 3 km NE Kalkfeld, 2.III.1990, leg. Max Schwarz; 1♂, Distr. Karibib, Erongo Berge, W Ameib Ranch, 21°47'10"S 15°37'35"E, 1000-1100m, 5.II.1994, leg. H. & R. Rausch.

S o u t h A f r i c a : 26♀♀, 60♂♂, Eastern Cape province, 25 km N Jansenville, 32°49'S 24°44'E, 600m, 4.I.2010, leg. J. Halada (JH); 1♂, Western Cape, N Cape Town, 70m, 33°46'S 18°33'E, 7.XII.2007, leg. Riha (JH); 1♀, CP, Olifantshoek, 24.III.1990, leg. Max Schwarz; 1♂, Eastern Cape province, 25 km N Jansenville, 32°49'S 24°44'E, 600m, 4.I.2010, leg. J. Halada (JH).

T a n z a n i a : 2♂♂, Iringa province, 10 Km N Mikumi, 07°20'S 36°57'E, 650m, 10.I.2007, leg. J. Halada; 1♂, Pwani province, 70 km E Morogoro, 06°36'S 38°08'E, 310m, 11.XII.2006, leg. J. Halada; 1♂, Dodoma province, 35 km N Dodoma, 1100m, 05°54'S 35°45'E, 14.XII.2006, leg. J. Halada.

***Cerceris formosa* DAHLBOM, 1845 (40♂♂)**

N a m i b i a : 4♂♂, 40 km NE Grootfontein, 16.I.1993, leg. J. Gusenleitner; 5♂♂, Gobabis, 40 km W Witvley, 16.II.1990, leg. Max Schwarz; 1♂, Okohandja, Okohandja, 19.II.1990, leg. Max Schwarz.

S o u t h A f r i c a : 30♂♂, Maputoland, SW Emanguisi, 29.I.2003, leg. Snižek.

***Cerceris fulviventris* GUÉRIN-MÉNEVILLE, 1844 (3♂♂)**

M a l i : 2♂♂, 5 km S San, 3.VIII.1991, leg. Max Schwarz (Gui).

N a m i b i a : 1♂, Rundu, 18.I.1993, leg. Max Schwarz.

***Cerceris gomphocarpi* BRAUNS, 1966 (1♂)**

K e n y a : 1♂, NW Garsen, 14.-17.XII.2009, leg. Snižek.

***Cerceris holconota* CAMERON, 1905 (20♀♀, 28♂♂)**

B o t s w a n a : 1♂, Kalahari, Gemsbok Nat. Park., 1.5 km E Chereka, 27.III.1990, leg. Max Schwarz.

N a m i b i a : 2♀♀, Windhoek, 36 km E Windhoek, 16.II.1990, leg. Max Schwarz; 1♀, Windhoek, 30 km E Windhoek, 4.II.1990, leg. Max Schwarz; 1♀, Windhoek, Aris, 25 km S Windhoek, 5.II.1990, leg. Max Schwarz; 3♀♀, 4♂♂, Gogabis, 40 km W Witvlei, 16.II.1990, leg. Max Schwarz; 2♀♀, Rehoboth, 15 km N Kalkrand, 14.II.1990, leg. Max Schwarz; 1♀, Tsumeb, 10 km SE Tsumeb, 8.III.1990, leg. Max Schwarz; 2♀♀, 4♂♂, 15 km E Swakopmund, 4.II.1993, leg. Max Schwarz; 1♀, 60 km SW Otavi, 14.I.1993, leg. Max Schwarz; 1♀, Rundu, 29.I.1993, leg. Max Schwarz; 1♀, 25 km E Rundu, 30.I.1993, leg. Max Schwarz; 1♂, Otjiwarongo, 25 km NW Otjiwarongo, 3.III.1990, leg. Max Schwarz; 1♂, 100 km SW Rundu, 1.II.1993, leg. Max Schwarz; 2♀♀, 1♂, 15 km E Swakopmund, 8.II.1993, leg. J. Gusenleitner & Max Schwarz; 1♀, 15 km E Swakopmund, 4.II.1993, leg. J. Gusenleitner; 1♀, Rehoboth, 15 km N Kalkrand, 13.II.1990, leg. Max Schwarz; 1♂, Okohandja, 37 km N Windhoek, 1100m, 18.II.1990, leg. Max Schwarz; 1♂, 15 km E Swakopmund, 2.II.1993, leg. J. Gusenleitner; 1♂, Rehoboth, 9km S Rehoboth, 8.II.1990, leg. Max Schwarz.

S o u t h A f r i c a : 1♀, CP, Kalahari, Gemsbok Nat. Park, Nossob, 27.III.1990, leg. Max Schwarz; 1♂, West Cape, 5 km S Lambert's Bay, 20.XI.2002, leg. Ma. Halada.

***Cerceris illustris* ARNOLD, 1931 (2♀♀, 12♂♂)**

G h a n a : 1♀, Eastern Senchi (N Kpong), 6°12'N 0°04'E, 27.VIOII.2012, leg. M. & J. Schwarz (ex coll. Martin Schwarz).

Z a m b i a : 1♀, 130 km W Solwezi, 7.I.2003, leg. J. Halada.

Z i m b a b w e : 12♂♂, 30 km W Harare, 22.XII.1998, leg. M. Halada (JH).

***Cerceris inconspicua* ARNOLD, 1931 (6♀♀)**

K e n y a : 1♀, Voi.10.XII.1999, leg. Snižek.

N a m i b i a : 1♀, Tsumeb, 10 km SE Tsumeb, 8.III.1990, leg. Max Schwarz; 1♀, Rehoboth, 15 km N Kalkrand, 14.II.1990, leg. Max Schwarz; 1♀, Damaraland, Khorixas, 4.III.1990, leg. Max Schwarz.

Z i m b a b w e : 1♀, S border Charara Saf. Area, 20.XII.1998, leg. Halada; 1♀, Mushandike Nat. Park, Masvingo, 10.XII.1998, leg. J. Halada.

***Cerceris iniqua* KOHL, 1894 (2♀♀, 1♂)**

S o u t h A f r i c a : 1♀, CP, 28 km E Olifantshoek, 24.III.1990, leg. Max Schwarz.

T o g o : 1♂, Reg dPlateaux, Akloa, Dorfwiese, 073045N 003632E, 22.IV.2008, leg. Oehlke.

Variation: Wings without a violet lustre.

K e n y a : 1♀, SW Voi, 8.-12.XII.2009, leg. Snižek.

***Cerceris iniqua arida* ARNOLD, 1931 (2♂♂)**

M a l i : 2♂♂, Kati, 25 km Nbamako, 23.VIII.1991, leg. Max Schwarz (Gui).

***Cerceris iniqua cratocephala* CAMERON, 1908 (7♀♀, 6♂♂)**

K e n y a : 2♀♀, 1♂, Taita Hills, Wundanyi, 5.-10.IV.1997, leg. Ma. Halada (JH); 1♀, E Mwingi, 14.V.2007, leg. M. Halada; 1♀, Nairobi, Muthaiga Road, 4.IV.2007, leg. M. Halada; 1♀, Nairobi, Karuhra Forest, 11.-16.I.1978, leg. Laube; 2♂♂, Tsavo, Tai Hills Wundanyi, 19.-21.XI.1996, leg. Mi. Halada; 1♂, Taita Hills, Wundanyi, 18.-22.III.1997, leg. Ma. Halada (JH); 2♂♂, Taita Hills Wundanyi, 5.-10.IV.1997, leg. Ma. Halada (JH).

Z i m b a b w e : 1♀, Cirinda Forest Land, Mt. Selinda, 24.I.1998, leg. Ma. Halada (JH); 1♀, Mushandike N.P., Masvingo, 10.XII.1998, leg. J. Halada (JH).

***Cerceris isis* ARNOLD, 1931 (9♀♀, 13♂♂)**

B o t s w a n a : 2♀♀, Kalahar Gemsbok Nat. Park, 1.5 km E Chereka, 27.III.1990, leg. Max Schwarz.

N a m i b i a : 1♀, 100 km SW Rundu, 28.I.1993, leg. Max Schwarz; 1♀, 2♂♂, 100 km SW Rundu, 1.II.1993, leg. Max Schwarz; 1♀, 5♂♂, Gobabis, 40 km W Witvlei, 16.II.1990, leg. Max Schwarz; 1♀, Kavangogeb.1, 15 km SW Rundu, 12.III.1990, leg. Max Schwarz; 1♀, 30 km E Rundu, 23.I.1993, leg. Max Schwarz; 1♀, 1♂♂, Rundu, 31.I.1993, leg. J. Gusenleitner; 1♀, 80 km SW Rundu, 26.I.1993, leg. J. Gusenleitner; 2♂♂, 80 km SW Rundu, 25.I.1993, leg. Max Schwarz; 1♂, 100 km SW Rundu, 1.II.1993, leg. J. Gusenleitner; 1♂, 100 km SW Rundu, 26.I.1993, leg. J. Gusenleitner; 1♂, 100 km SW Rundu, 28.I.1993, leg. J. Gusenleitner.

***Cerceris kobrowi* BRAUNS, 1926 (2♂♂)**

K e n y a : 1♂, Voi env., Salaga env., 750m, 13.-19.XI.2011, leg. Snizek.

S o u t h A f r i c a : 1♂, Maputoland SW Emanguzi, 29.I.2003, leg. Snizek.

***Cerceris languida* CAMERON, 1905 (27♀♀, 26♂♂)**

N a m i b i a : 3♀♀, 3♂♂, 100 km SW Rundu, 1.II.1993, leg. Max Schwarz; 1♀, 3♂♂, 100 km SW Rundu, 25.I.1993, leg. J. Gusenleitner; 8♀♀, 8♂♂, 100 km SW Rundu, 25.+28.I.1993, leg. Max Schwarz; 2♀♀, Rundu, 20.+23.I.1993, leg. Max Schwarz; 1♀, 80 km SW Rundu, 25.I.1993, leg. Max Schwarz; 2♀♀, 1♂, Kavangogeb.1, 100 km SW Rundu, 12.III.1990, leg. Max Schwarz; 1♀, Kavangogeb. 1, Rundu, 11.III.1990, leg. Max Schwarz; 1♂, Rundu, 31.I.1993, leg. Max Schwarz; 1♂, 125 km SW Rundu, 16.I.1993, leg. Max Schwarz; 1♂, 40 km E Rundu, 21.I.1993, leg. Max Schwarz; 1♂, 90 km NE Grootfontein, 16.I.1993, leg. Max Schwarz; 2♀♀, 25 km E Rundu, 30.I.1993, leg. J. Gusenleitner; 2♀♀, 80 km SW Rundu, 25.I.1993, leg. J. Gusenleitner; 2♂♂, 125 km SW Rundu, 16.I.1993, leg. J. Gusenleitner; 1♂, 100 km SW Rundu, 1.II.1993, leg. J. Gusenleitner.

S o u t h A f r i c a : 2♂♂, CP, Olifantshoek, 24.III.1990, leg. Max Schwarz; 1♀, W Cape, Citrusdal env., 27.X.1999, leg. Snizek.

***Cerceris laterifurcata* EMPEY, 1973 (3♀♀, 18♂♂)**

Note:The petiole and tergum I are partly or completely reddish-brown in the specimens from Kenya.

K e n y a : 2♀♀, 7♂♂, Voi (Tsavo) env., 22.XI.-2.XII.1996, leg. Mi. Halada; 1♀, 3♂♂, Voi, 10.XII.1999, leg. Snizek; 7♂♂, Voi (Tsavo) env., 8.-18.XI.1996, leg. Mi. Halada; 2♂♂, Voi (Tsavo), 23.III.-4.IV.1997, leg. Ma. Halada; 1♂, Voi (Tsavo), 11.-14.IV.1997, leg. Ma. Halada; 1♂, Voi (Tsavo), 13.-17.XII.1997, leg. Snizek.

***Cerceris lateriproducta* MOCHI, 1938 (3♂♂)**

M a l i : 1♂, 10 km S Mopti, 8.VIII.1991, leg. Max Schwarz (Gui); 2♂♂, 10 km E Hombori, 18.VIII.1991, leg. Max Schwarz (Gui).

***Cerceris latifrons* BINGHAM, 1902 (7♀♀, 16♂♂)**

S o u t h A f r i c a : 5♀♀, West Cape, Riviersonderend river Greyton, 22.XI.2002, leg. Ma. Halada (JH); 1♀, Western Cape, Greyton (NE env.), Riviersonderend Mts., 250m, 34°02.165'S 19°36.955'E, 9.-10.XII.2007, leg. Řiha (JH); 1♀, Eastern Cape province, Woody Cape Nat. Reserv. near Alexandria, 28.XI.-1.XII.2000, leg. Bečvař (JH); 11♂♂, Eastern Cape, Cradock (N env.), 880m, 32°08'S 25°38'E, 17.XII.2007, leg. Řiha (JH); 2♂♂, West Cape, Greyton, Riviersonderend river, 7.XI.1999, leg. Ma. Halada (JH); 1♂, West Cape, Greyton, Riviersonderend river, 21.X.1999, leg. Ma. Halada (JH); 1♂, West Cape, 20 km N Citrusdal, 27.X.1999, leg. M. Halada (JH); 1♂, West Cape, Greyton, Riviersonderend river, 22.XI.2002, leg. Ma. Halada (JH).

***Cerceris lunigera* DAHLBOM, 1845 (72♀♀, 318♂♂)**

B o t s w a n a : 2♂♂, Maun Isl Safari Lodge, 1.1997, leg. Snizek; 2♂♂, Maun Isl Sateri, 1.1997, leg. Snizek.

E t h i o p i a : 14♂♂, Sidamo province, 40 km W Sodo, 1130m, 12.IV.2007, leg. J. Halada; 1♂, Sidamo province, ~ 50 km NW Mega, 1420m, 24.IV.2007, leg. J. Halada; 1♂, Gamo, Gofa province, 45 km SE Arba Minch, 1200m, 15.IV.2007, leg. J. Halada.

G h a n a : 2♂♂, Greater Accra, Accra, Nungua, 5°37'N 0°06'W, 22.VIII.2012, leg. M. & J. Schwarz (ex coll. Martin Schwarz).

K e n y a : 6♀♀, 17♂♂, Voi (Tsavo) env., 8.-18.XI.1996, leg. Mi. Halada & Snizek; 3♀♀, 5♂♂, Voi (Tsavo) env., 22.XI.1996, leg. Mi. Halada; 2♀♀, 10♂♂, Voi (Tsavo), 23.III.-4.IV.1997, leg. Ma. Halada; 1♀, Voi, 16.V.2007, leg. M. Halada; 1♀, 2♂♂, Mwingi env., 7.IV.2007, leg. M. Halada; 1♂, Makindu, 16.IV.2007, leg. M. Halada; 1♂, Mwingi Kangonde vadi, 18.IV.2007, leg. M. Halada; 6♂♂, Voi, 10.VII.1999, leg. Snizek; 2♂♂, Voi (Tsavo), 11.-14.IV.1997, leg. Ma. Halada; 1♀, 1♂, Voi env., Sagala env., 750m, 13.-19.IX.2011, leg. Snizek.

M a l a w i : 2♀♀, 80 km E Liangwe, Selima env., 3.-4.I.2002, leg. J. Halada; 4♀♀, Mulanje Mts. Env., 23.-26.XII.2001, leg. J. Halada; 2♀♀, Mulanje Mts. env., 22.-26.I.2001, leg. Oboril; 1♀, 85 km SE Lilongwe Dezda, 5.-12.I.2002, leg. J. Halada.

M o z a m b i q u e : 1♀, Manica province, 65 km W Chimoio, 10.-11.XII.2003, leg. J. Halada; 1♀, 1♂, Inhambane province, 25 km N Massinga, 5.+29.XII.2003, leg. J. Halada.

N a m i b i a : 4♀♀, 59♂♂, 15 km E Swakopmund, 4.II.1993, leg. Max Schwarz; 1♀, 20♂♂, 15 km E Swakopmund, 8.II.1993, leg. Max Schwarz; 3♀, 2♂♂, Rundu, 20.I.1993, leg. Max Schwarz; 3♀♀, 3♂♂, Rundu, 29.I.1993, leg. Max Schwarz; 1♀, 3♂♂, Rundu, 22.I.1993, leg. Max Schwarz; 1♀, 2♂♂, Kavangogeb. 1, Rundu, 10.+11.III.1990, leg. Max Schwarz; 9♂♂, Rundu, 18.I.1993, leg. Max Schwarz; 5♂♂, Rundu, 19.I.1993, leg. Max Schwarz; 4♂♂, Mariental, 73 km S Mariental, 13.II.1990, leg. Max Schwarz; 1♂, Mariental, 73 km S Mariental, 10.II.1990, leg. Max Schwarz; 2♂♂, Tsumeb, 10 km SE Tsumeb, 8.III.1990, leg. Max Schwarz; 1♂, Tsumeb, 30 km E Namutoni, 7.III.1990, leg. Max Schwarz; 4♀♀, 7♂♂, 15 km E Swakopmund, 8.II.1993, leg. J. Gusenleitner; 4♀♀, 4♂♂, 15 km E Swakopmund, 4.II.1993, leg. J. Gusenleitner; 3♀♀, 2♂♂, Rundu, 29.I.1993, leg. J. Gusenleitner; 3♀♀, 1♂, Rundu, 31.I.1993, leg. J. Gusenleitner; 1♀, 2♂♂, Rundu, 19.I.1993, leg. J. Gusenleitner; 1♀, 3♂♂, Rundu, 22.I.1993, leg. J. Gusenleitner; 3♂♂, Rundu, 18.I.1993, leg. J. Gusenleitner; 1♂, Rundu, 20.I.1993, leg. J. Gusenleitner.

S o u t h A f r i c a : 2♀♀, Eastern Cape, 7 km S Cradock, 25.I.2000, leg. J. Halada; 1♀♀, 83♂♂, Eastern Cape province, 25 km N Jansenville, 32°49'S 24°44'E, 600m, 4.I.2010, leg. J. Halada; 1♀, 1♂, Mpumalanga, 20 km SW Lydenburg, 20.-21.XI.2003, leg. J. Halada; 1♀, Kwaz. Natal Province, 35 km N Edward, 30°45'S 30°09'E, 450m, 28.XII.2009, leg. J. Halada; 1♀, 3♂♂, Kwaz. Natal province, 20 km N greytown, 28°58'S 30°34'E, 1140m, 18.I.2010, leg. J. Halada; 12♂♂, Kwaz. Natal province, 10 km NE Kokstad, 30°30'S 29°31'E, 1320m, 25.XII.2009, leg. J. Halada; 1♂, West Cape, Klein-Karoo, Grot river, Langberg 24.XI.2002, leg. Ma. Halada; 1♂, Eastern Cape province, 20 km NE Addo, 400m, 5.I.2010, leg. J. Halada; 1♂, West Cape, Klein-Karoo, Langberg, Grot river, 15.XII.2002, leg. Ma. Halada; 1♂, Eastern Cape province, 40 km SE Grahamstown, 33°27'S 26°47'E, 190m, 10.I.2010, leg. J. Halada; 1♂, Eastern Cape province, 40 km SE Grahamstown, 33°27'S 26°47'E, 190m, 10.I.2010, leg. J. Halada; 1♂, West Cape, Riversonderend river, Greyton, 22.XI.2002, leg. Ma. Halada; 1♂, Kwazulu Natal, Utrecht, 28.XI.2002, leg. Snizek; 1♂, O.F.S., Villers, 15.I.2003, leg. Snizek; 1♂, Western Cape, Swellendam (N env.), 150m, near Marloth Nat. Res., 34°00.607'S 20° 25.874'E, 3.-11.XII.2007, leg. Riha; 1♀, CP. Olifantshoek, 24.III.1990, leg. Max Schwarz; 1♂, O.F.S., N Ficksburg, R.70, 17.I.2003, leg. Snizek.

T a n z a n i a : 2♂♂, Dodoma province, 35 km N Dodoma, 1100m, 05°54'S 35°45'E, 14.XII.2006, leg. J. Halada.

Z a m b i a : 1♂, 150 km S Mwinilunga, 13°11'S 24°14'E, 1100m, 2.XI.2008, leg. M. Halada.

Z i m b a b w e : 1♀, Shamva (Bindura), 17.XII.1998, leg. Ma. Halada; 1♀, 25 km NE Nyagui r., (Bindura), 15 XII.1998, leg. J. Halada; 1♂, 50 km NW Chipinge, 25.I.1998, leg. Ma. Halada; 1♂, Chimanimani N. P., 14.XII.1998, leg. M. Halada; 1♂, Nyika, 50 km E Masvingo, 23.I.1998, leg. Ma. Halada; 2♂♂, (ZW) Dete (Hwange NP), 10.XII.1997, leg. Plass.

***Cerceris macalanga* BRAUNS, 1926 (1♀)**

Z a m b i a : 1♀, 30 km W Livingstone, 19.-22.XII.2002, leg. J. Halada. *Cerceris mazimba* BRAUNS, 1926 (15♂♂).

G h a n a : 2♂♂, Eastern Senchi (N Kpong), 6°12'N 0°04'E, 27.VIII.2012, leg. M. & J. Schwarz (ex coll. Martin Schwarz).

M a l i : 1♂, 30 km S San, 5.VIII.1991, leg. Max Schwarz (Gui); 1♂, 30 km S San, 6.VIII.1991, leg. Max Schwarz (Gui); 1♂, 5 km S San, 3.VIII.1991, leg. Max Schwarz (Gui); 1♂, 100 km NE San, 21.VIII.1991, leg. Max Schwarz (Gui); 1♂, 40 km SW Segon, 31.VII.1991, leg. Max Schwarz (Gui); 1♂, 25 km N Bamako, 28.VII.1991, leg. Max Schwarz (Gui).

M o z a m b i q u e : 4♂♂, Manica province, 65 KM W Chimoio, 10.-11.XII.2003, leg. J. Halada (JH); 1♂, Manica province, 30 km NW Catandica, 17.-18.XII.2003, leg. J. Halada (JH).

S o u t h A f r i c a : 1♂, Maputoland, SW Emanguisi, 29.I.2003, leg. Snizek (JH).

Z a m b i a : 1♂, 45 km SE Kitwe, 12.-15.I.2003, leg. J. Halada (JH).

***Cerceris multipicta* F. SMITH, 1873 (1♀, 24♂♂)**

K e n y a : 3♂♂, Voi (Tsavo) env., 8.-18.XI.1996, leg. Mi. Halada (JH); 2♂♂, Voi (Tsavo) env., 22.XI.-2.XII.1996, leg. Mi. Halada (JH).

M a l i : 1♂, 10 km S Mopti, 7.VIII.1991, leg. Max Schwarz (Gui); 4♂♂, 10 km S Mopti, 20.VIII.1991, leg. Max Schwarz (Gui); 1♂, 100 km NE San, 21.VIII.1991, leg. Max Schwarz (Gui); 1♂, 40 km SE Segou, 2.VIII.1991, leg. Max Schwarz (Gui); 1♂, 60 km SW Segou, 1.VIII.1991, leg. Max Schwarz (Gui); 1♂, 60 km NE San, 6.VIII.1991, leg. Max Schwarz (Gui).

N a m i b i a : 1♀, 1♂, Okohandja, 27 km S Okohandja, 18.II.1990, leg. Max Schwarz; 4♂♂, Outjo, 24 km S Kamanjab, 5.III.1990, leg. Max Schwarz; 2♂♂, Rundu, 22.+23.I.1993, leg. Max Schwarz; 2♂♂, Rundu, 19.+20.I.1993, leg. Max Schwarz; 1♂, Rundu, 11.III.1990, leg. Max Schwarz.

S o u t h A f r i c a : 1♂, East Cape, Graaff-Reinet-Nieu- Bethesda, 22.I.2001, leg. Snizek.

***Cerceris nasidens* SCHLETTERER, 1887 (3♀♀, 11♂♂)**

N a m i b i a : 2♀♀, 7♂♂, 60 km SW Otavi, 14.I.1993, leg. Max Schwarz; 1♀, Otjiwarongo, 20 km NE Otjiwarongo, 13.III.1990, leg. Max Schwarz; 3♂♂, 60 km SW Otavi, 14.I.1993, leg. J. Gusenleitner.

Z i m b a b w e : 1♂, Bulawayo, Shangani Naletale Ruins env., 20.XII.2011, leg. Snizek.

***Cerceris natalensis* DE SAUSSURE, 1867 (1♂)**

N a m i b i a : 1♂, Grootfontein, 30 km NE Grootfontein, 9.III.1990, leg. Max Schwarz.

***Cerceris nenicra* DE SAUSSURE, 1887 (1♀)**

M a d a g a s c a r : 1♀, 4 km E Antsirabe, Lac Andraikiba, 19.876S 46.975E, 20.XII.2017, leg. et det. Schmid-Egger.

***Cerceris nigrostoma* BRAUNS, 1926 (1♀, 5♂♂)**

K e n y a : 1♂, Voi env., 750m, 13.-19.XI.2011, leg. Snizek.

N a m i b i a : 1♀, Outjo, 55 km W Outjo, 4.III.1990, leg. Max Schwarz; 1♂, Outjo, Okankuje, 6.III.1990, leg. Max Schwarz; 1♂, Meteorite W Grootfontein, 15.I.1993, leg. J. Gusenleitner; 1♂, Otjiwarongo, 25 km NW Otjiwarongo, 3.III.1990, leg. Max Schwarz; 1♂, 15 km SE Outjo, 3.III.1990, leg. Max Schwarz.

***Cerceris nugax* ARNOLD, 1931 (5♂♂)**

M a l i : 1♂, 10 km S Mopti, 8.VIII.1991, leg. Max Schwarz (Gui); 1♂, 10 km S Mopti, 20.VIII.1991, leg. Max Schwarz (Gui); 1♂, 70 km SW Mopti, 21.VIII.1991, leg. Max Schwarz (Gui); 1♂, 20 km SW San, 22.VIII.1991, leg. Max Schwarz (Gui); 1♂, 130 Km NE Mopti, 19.VIII.1991, leg. Max Schwarz (Gui).

***Cerceris orangiae* BRAUNS, 1926 (1♂)**

N a m i b i a : 1♂, Gobabis, 40 km W Witvlei, 16.II.1990, leg. Max Schwarz.

***Cerceris oraniensis* BRAUNS, 1926 (5♂♂)**

N a m i b i a : 3♂♂, Outjo, 24 km S Kamanjab, 5.III.1990, leg. Max Schwarz.

S o u t h A f r i c a : 2♂♂, CP., 28 km E Olifantshoek, 24.III.1990, leg. Max Schwarz.

***Cerceris pearstonensis* CAMERON, 1905 (7♀♀, 5♂♂)**

K e n y a : 1♂, Tsavo East, Buchuma, 28.XI.1997, leg. Snizek.

N a m i b i a : 1♀, 1♂, 40 km NE Grootfontein, 16.I.1993, leg. Max Schwarz; 2♀♀, Windhoek, 30 km E Windhoek, 4.II.1990, leg. Max Schwarz; 2♀♀, 4♂♂, Gobabis, 40 km E Witvlei, 16.II.1990, leg. Max Schwarz; 1♀, Okohandja, Okohandja, 19.II.1990, leg. Max Schwarz.

S o u t h A f r i c a : CP, 90 km W Van Zylsrus, 26.III.1990, leg. Max Schwarz.

***Cerceris petiolata* DE SAUSSURE, 1891 (1♀)**

M a d a g a s c a r : 1♀, Antsirana, Nat. Park (Montagne d'Ambre), 21.-25.XII.2003, leg. Dolin, Andreev & Andreeva.

***Cerceris pictifacies* BRAUNS, 1926 (16♂♂)**

B o t s w a n a : 1♂, Maun, Island Sateri, I.1997, leg. Snizek.

K e n y a : 2♂♂, 10.XII.1999, leg. Snizek; 1♂, Voi (Tsavo), 13.-17.XII.1997, leg. Snizek; 1♂, E Taveta, 7.IV.2007, leg. M. Halada; 2♂♂, Mwingi, Kangonde vadi, 18.IV.2007, leg. M. Halada.

N a m i b i a : 3♂♂, Ontjo, 55 km W Ontjo, 4.III.1990, leg. Max Schwarz; 3♂♂, Otjivarongo, 20 km NE Otjivarongo, 13.III.1990, leg. Max Schwarz; 1♂, Otjivarongo, 15 km NW Otjivarongo, 3.III.1990, leg. Max Schwarz; 1♂, Tsumeb, 10 km SE Tsumeb, 8.III.1990, leg. Max Schwarz; 1♂, Okohandja, 27 km S Okohandja, 18.II.1990, leg. Max Schwarz; 1♂, Outjo, 24 km S Kamanjab, 5.III.1990, leg. Max Schwarz.

***Cerceris pulchella* KLUG, 1845 (1♂)**

M a l i : 1♂, 180 km SW Gao, 13.VIII.1991, leg. Max Schwarz (Gui).

***Cerceris quadridentata* ARNOLD, 1931 (25♀♀, 21♂♂)**

B o t s w a n a : 3♀♀, Kalahari Gemsbok Nat. Park, 1.5 km E Chereka, 27.III.1990, leg. Max Schwarz.

N a m i b i a : 2♀♀, 4♂♂, Karibib, 23 km N Karibib, 27.II.1990 leg. Max Schwarz; 1♀, 2♂♂, Kavangengeb., 1, Rundu, 10.+11.III.1999, leg. Max Schwarz; 1♀, 100 km SW Rundu, 28.I.1993, leg. Max Schwarz; 2♀♀, 1♂, Gobabis, 40 km W Witvlei, 16.II.1990, leg. Max Schwarz; 1♀, 2♂♂, Rehoboth, 7 km N Rehoboth, 15.II.1990, leg. Max Schwarz; 2♂♂, Karibib, 15 km W Karibib, 26.+28.II.1990, leg. Max Schwarz; 4♂♂, Rehoboth, 23 km N Rehoboth, 15.II.1990, leg. Max Schwarz; 1♂, Rehoboth, 15 km N Kalkrand, 14.II.1990, leg. Max Schwarz.

S o u t h A f r i c a : 4♀♀, CP, Olifantshoek, 24.III.1990, leg. Max Schwarz; 7♀♀, 2♂♂, CP, 28 km E Olifantshoek, 24.III.1990, leg. Max Schwarz; 3♀♀, CP, 60 km N Olifantshoek, 25.III.1990, leg. Max Schwarz; 1♀, CP, Kalahari, Gemsbok Nat. Park, Nossdo, 27.III.1990, leg. Max Schwarz; 1♀, 20♂♂, North West, 50 km S Kimberley, Ritchie, 22.I.2000, leg. J. Halada.

***Cerceris querula* KOHL, 1906 (6♂♂)**

K e n y a : 2♂♂, Voi (Tsavo) env., 8.-18..1996, leg. Mi. Halada; 3♂♂, Voi, 10.XII.1999, leg. Snizek; 1♂, Voi (Tsavo), 23.III.-4.IV.1997, leg. Ma. Halada.

***Cerceris reginula* BRAUNS, 1926 (3♀♀, 4♂♂)**

K e n y a : 2♂♂, Voi (Tsavo), 23.III.-4.IV.1997, leg. Ma. Halada; 1♂, Voi (Tsavo) env. 22.XI.-2.XII.1996, leg. Mi. Halada.

N a m i b i a : 1♂, Rundu, 18.I.1993, leg. J. Gusenleitner.

S o u t h A f r i c a : 3♀♀, Maputoland, SW Emanguisi, 29.I.2003, leg. Snizek.

***Cerceris rhodesiae* BRAUNS, 1926 (1♂)**

Z a m b i a : 1♂, 20 km S Mbala, 08°59'S 31°23'E, 1720m, 16.XII.2009, leg. Kantner.

***Cerceris ruficauda* CAMERON, 1905 (10♀♀, 54♂♂)**

K e n y a : 1♂, Voi (Tsavo) 23.III.-4.IV.1997, leg. Ma. Halada; 2♂♂, Taita Hills, Voi river, 14.IV.2007, leg. M. Halada; 1♂, Voi env, Sagala env., 750m, 13.-19.XI.2011, leg. Snizek.

N a m i b i a : 4♀♀, 10♂♂, Rundu, 22.I.1993, leg. Max Schwarz; 3♀♀, 6♂♂, Rundu, 20.I.1993, leg. Max Schwarz; 1♀, 2♂♂, Rundu, 29.I.1993, leg. Max Schwarz; 6♂♂, Rundu, 19.I.1993, leg. Max Schwarz; 1♂, 25 km N Windhoek, 12.I.1993, leg. Max Schwarz; 1♂, Outjo, 55 km W Outjo, 4.III.1993, leg. Max Schwarz; 1♀, Rundu, 22.I.1993, leg. J. Gusenleitner; 1♀, 7♂♂, Rundu, 19.I.1993, leg. J. Gusenleitner; 10♂♂, Rundu, 18.+20.I.1993. leg. J. Gusenleitner; 3♂♂, 100 km SW Rundu, 1.II.1993, leg. J. Gusenleitner; 3♂♂, 100 km SW Rundu, 1.II.1993, leg. Max Schwarz; 1♂, Otjivarongo, 20 km NE Otjivarongo, 13.III.1990, leg. Max Schwarz.

***Cerceris rufiscutis* CAMERON, 1908 (1♀, 1♂)**

K e n y a : 1♀, Massaimara, 1.25S 35.00E, 10.-14.VIII.1992, leg. Leonhardsberger.

Z i m b a b w e : 1♂, 30 km W Harare, 22.XII.1998, leg. J. Halada.

***Cerceris rufocincta* GERSTAECKER, 1858 (105♀♀, 103♂♂)**

K e n y a : 1♀, Voi (Tsavo) env., 22.XI.-2.XII.1996, leg. Mi. Halada; 1♀, 2♂♂, Voi (Tsavo) env., 8.-18.XI.1996, leg. Mi. Halada.

M a l i : 1♀, 10 km S Mopti, 10.VIII.1991, leg. Max Schwarz (Gui); 1♀, 10 km S Mopti, 20.VIII.1991, leg. Max Schwarz (Gui); 2♀♀, 10 km E Hombori, 18.VIII.1991, leg. Max Schwarz (Gui); 2♀♀, 30 km NE Hombori, 18.VIII.1991, leg. Max Schwarz (Gui); 1♂, 60 km W Segou, 1.VIII.1991, leg. Max Schwarz (Gui).

M a l a w i : 14♀♀, 10♂♂, 85 km SE Lilongwe, Dedzda, 5.-12.I.2002, leg. J. Halada (JH); 1♂, 85 km S Lilongwe Dedzda, 17.-19.XII.2001, leg. J. Halada (JH).

M o z a m b i q u e : 1♀, Manicata province, 70 km SE Chimoio, 23.-24.XII.2003, leg. J. Halada.

N a m i b i a : 2♀♀, Otjivarongo, 25 km NW Otjivarongo, 3.III.1990, leg. Max Schwarz; 1♀, Outjo, 55 km W Outjo, 4.III.1990, leg. Max Schwarz; 2♀♀, 1♂, Rundu, 19.+20.I.1993, leg. Max Schwarz; 1♀, 25 km SE Tsumeb, 15.I.1993, leg. Max Schwarz; 1♀, 1♂, Rundu, 22.I.1993, leg. Max Schwarz; 2♂♂, Rundu, 29.+31.I.1993, leg. J. Gusenleitner; 1♂, 100 km SW Rundu, 1.II.1993, leg. J. Gusenleitner; 2♂♂, Gobabis, 40 km W Witvlei, 16.II.1990, leg. Max Schwarz; 1♂, 100 km SW Rundu, 1.II.1993, leg. Max Schwarz.

S o u t h A f r i c a : 31♀♀, 31♂♂, Maputoland, SW Emanguisi, 29.I.2003, leg. Snizek (JH); 2♀♀, W Cape, Moseel Bay, rute Herbertsdale-Langberg, 19.I.2001, leg. Snizek (JH); 26♀♀, 35♂♂, Eastern Cape, 10 km SE Alexandria, Nat. Res., 28.-31.I.2000, leg. J. Halada; 1♀, 5♂♂, Eastern Cape province, Nat.Res., 10 km ESE Alexandria, 28.-31.I.2000, leg. Becvar; 1♀, Mpumalanga, Waterval Boven, 10.-11.II.2002, leg. J. Halada; 1♂, Mpumalanga, 20 km SW Lydenbrug, 20.-21.XI.2003, leg. J. Halada.

Z i m b a b w e : 5♀♀, 2♂♂, Mushandike N.P., Masvingo, 10.XII.1998, leg. J. Halada (JH); 4♀♀, Mushandike, Sanctuary Masvingo, 9.-11.XII.1998, leg. Ma. Halada (JH); 5♀♀, 2♂♂, Mount Selinda, 12.XII.1998, leg. J. Halada (JH); 5♂♂, Chimanimani NP, 14.XII.1998, leg. J. Halada & Becvar (JH); 1♂, 40 km S Chipinge, Mt. Selinda, 13.XII.1998, leg. J. Halada & Becvar (JH).

***Cerceris schultzei* BISCHOFF, 1913 (1♂)**

N a m i b i a : 1♂, 80 km SW Rundu, 25.I.1993, leg. J. Gusenleitner.

***Cerceris sokotrae* KOHL, 1906 (10♀♀, 82♂♂)**

K e n y a : 15♂♂, Voi (Tsavo) env., 22.XI.-2.XII.1996, leg. Mi. Halada; 6♂♂, Voi (Tsavo) env., 8.-18.XI.1996, leg. Mi. Halada; 2♂♂, Voi env., Sagala env., 750m, 13.-19.XI.2011, leg. Snizek; 13♂♂, Voi, 10.XII.1999, leg. Snizek; 1♂, Voi (Tsavo) env., 8.-18.XI.1996, leg. Mi. Halada.

M a l i : 4♀♀, 10♂♂, 10 km S Mopti, 7.VIII.1991, leg. Max Schwarz (Gui); 2♀♀, 21♂♂, 10 km S Mopti, 8.VIII.1991, leg. Max Schwarz; 5♀♀, 2♂♂, 10 km S Mopri, 10.VIII.1991, leg. Max Schwarz; 1♂, 70 km SE Segou, 2.VIII.1991, leg. Max Schwarz; 1♂, 60 km NE San, 6.VIII.1991, leg. Max Schwarz; 2♂♂, 40 km W Mopti, 9.VIII.1991, leg. Max Schwarz; 1♀, 9♂♂, 10 km S Mopti, 20.VIII.1991, leg. Max Schwarz; 1♀, 30 km NE San, 6.VIII.1991, leg. Max Schwarz (Gui).

***Cerceris songhai* GUICHARD, 1993**

M a l i : 2♀♀, 4♂♂, 10 km S Mopti, 8.VIII.1991, leg. Max Schwarz (Gui); 1♀, 3♂♂, 10 km S Mopti, 7.VIII.1991, leg. Max Schwarz (Gui); 3♀♀, 7♂♂, 10 km S Mopti, 10.VIII.1991, leg. Max Schwarz (Gui); 2♀♀, 3♂♂, 10 km S Mopti, 20.VIII.1991, leg. Max Schwarz (Gui); 1♀, 1♂, 40 km W Mopti, 9.VIII.1991, leg. Max Schwarz (Gui); 2♂♂, 50 km N Bamake, 30.VII.1991, leg. Max Schwarz (Gui).

***Cerceris spectrum* ARNOLD, 1936 (1♀, 3♂♂)**

N a m i b i a : 1♀, Otjiwarongo, 20 km NE Otjiwarongo, 13.III.1990, leg. Max Schwarz; 1♂, Otjiwarongo, 80 km S Otjiwarongo, 14.III.1990, leg. Max Schwarz; 1♂, Otjiwarongo, 15 km NW Otjiwarongo, 3.III.1990, leg. Max Schwarz; 1♂, Karavangengeb. 1, Rundu, 11.III.1990, leg. Max Schwarz.

***Cerceris spinicaudata* CAMERON, 1905 (1♀)**

C a m e r o o n : 1♀, Kribi env., prim.-sek., Regenwald-rand, 10m, 21.-25.V.2006, leg. Oehlke.

***Cerceris stevensoni* BRAUNS, 1926 (2♀♀)**

C a m e r o o n : 1♀, Umg. Kribi, prim./sek., Regenwald-Rand, 10m, 21.-25.V.2006, leg. Oehlke.

Note: This female has the anterior margin of the median part of the clypeus with a small emargination medially, as mentioned in the description of BRAUNS 1926: 30.

C a m e r o o n : 1♀, Umg. Kribi, prim./sek., Regenwald-Rand, 10m, 21.-25.V.2006, leg. Oehlke.

Note: This female has a straight anterior margin of the median part of the clypeus as it is shown in BRAUNS 1926: Pl. XLIV, fig.5.

***Cerceris trichionota kalaharica* BISCHOFF, 1913 (6♀♀)**

S o u t h A f r i c a : 6♀♀, North Cape, S-Kalahari des., Van Zylsrus, 15.I.2001, leg. Snizek (JH).

***Cerceris tricolorata nigrifrons* F. SMITH, 1856 (30♀♀, 222♂♂)**

B o t s w a n a : 3♂♂, Maun Island Sateri, I.1997, leg. Snizek (JH).

K e n y a : 22♂♂, Voi (Tsavo) env., 8.-18.XI.1996, leg. M. Halada (JH); 1♀, 20♂♂, Voi (Tsavo) env., 22.XI.-2.XII.1996, leg. M. Halada (JH); 13♂♂, Voi (Tsavo) env., 23.III.-4.IV.1997, leg. M. Halada (JH); 3♂♂, Voi (Tsavo), 11.-14.IV.1997, leg. M. Halada (JH); 23♂♂, Voi, 10.XII.1999, leg. Snizek; 34♂♂, Mwingi, Kangonde vadi, 18.IV.2007, leg. M. Halada (JH); 2♂♂, Yatta, Athi riv., 17.IV.2007, leg. M. Halada (JH); 1♂, Sosoma, 202 km E Thika, 20.XI.2007, leg. Snizek (JH); 1♂, Voi, 16.V.2007, leg. M. Halada (JH); 1♂, Nguni, N Ngomeni, 30.XII.2007, leg. Snizek (JH); 1♂, E Mwingi, 14.V.2007, leg. M. Halada (JH); 1♂, Mwingi env., 7.IV.2007, leg. M. Halada (JH); 2♂♂, Voi (Tsavo), 23.III.-4.IV.1997, leg. M. Halada (JH); 1♂, Voi, 750m, 13.-19.XI.2011, leg. Snizek.

M a l i : 1♂, 30 km N Bamako, 29.VII.1991, leg. Max Schwarz (Gui).

M o z a m b i q u e : 2♂♂, Manicata province, 70 km SE Chimoio, 23.-24.XII.2003, leg. J. Halada (JH).

N a m i b i a : 1♀, 1♂, Otjiwarongo, 3 km NE Kalkfeld, 2.III.1990, leg. Max Schwarz; 2♀♀, 1♂, Outjo, 24 km S Kamanjab, 5.III.1990, leg. Max Schwarz; 1♀, 1♂, Otjiwarongo, 25 km NW Otjiwarongo, 3.III.1990, leg. Max Schwarz; 2♀♀, Kavangogeb. 1, Rundu, 10.+11.III.1990, leg. Max Schwarz; 1♀, 1♂, Rundu, 22.I.1993, leg. Max Schwarz; 1♂, Rundu, 31.I.1993, leg. Max Schwarz; 1♀, 1♂, Rundu, 11.II.1990, leg. Max Schwarz; 1♂, Otjiwarongo, 20 km NE Otjiwarongo, 13.III.1990, leg. Max Schwarz; 1♂, Tsumeb, 30 km E Namutoni, 7.III.1990, leg. Max Schwarz; 1♂, Mariental, 73 km S Mariental, 10.II.1990, leg. Max Schwarz; 2♂♂, Meteorite, W Grootfontein, 15.I.1993, leg. Max Schwarz; 3♂♂, 100 km SW Rundu, 1.II.1993, leg. Max Schwarz; 1♂, Otjiwarongo, 15 km NW Otjiwarongo, 3.III.1990, leg. Max Schwarz; 2♀♀, 40 km E Rundu, 21.I.1993, leg. J. Gusenleitner; 1♀, Rundu, 17.I.1993, leg. J. Gusenleitner; 1♂, Distr. Kavango Rundu, 15-20 km E der Stadt, 17°56'20"S 19°55'30"E, 1100m, 13.II.1994, leg. H. & R. Rausch; 1♂, 100 km SW Rundu, 28.I.1993, leg. J. Gusenleitner; 1♀, Rundu, 29.I.1993, leg. J. Gusenleitner.

- S o u t h A f r i c a :** 4♂♂, West Cape, Moseel Bay, route Herbertsdal-Langberg, 19.I.2001, leg. Snizek (JH); 1♀, 2♂♂, Mpumalanga, 20 km SE Nelspruit, 5.-6.I.2004, leg. J. Halada (JH); 1♂, N Cape, 40 km SW Garies vadi groen, 16.X.1999, leg. M. Halada (JH); 3♀♀, 1♂, Maputoland, SW Emanguzi, 29.I.2003, leg. Snizek; 1♀, 3♂♂, CP, 28 km E Olifantshoek, 24.III.1990, leg. Max Schwarz; 5♀♀, 37♂♂, Eastern Cape province, 25 km N Jansenville, 32°49'S 24°44'E, 600m, 4.I.2010, leg. J. Halada (JH); 1♀, Eastern Cape province, 70 km SW Quennstown, 32°07'S 26°18'E, 1355m, 2.I.2010, leg. J. Halada (JH); 1♀, Eastern Cape province, 10 km SE Alexandria Nat. Res., 28.-31.I.2000, leg. J. Halada (JH); 1♀, 1♂, W. Cape., K. Karoo mer., Langberg env., 15.XII.2003, leg. Snizek (JH); 1♀, Northern Cape, E Kamiescroon, 2.XI.1999, leg. M. Halada (JH); 4♂♂, West Cape, Klein-Karoo, Grot river, Langberg, 15.II.+24.IX.2002, leg. Ma. Halada (JH); 1♂, Kwaz-Natal province, 25 km NE Ladysmith, 28°27'S 29°53'E, 1100m, 23.XII.2009, leg. J. Halada (JH); 1♂, Eastern Cape province, 20 km NE Addo, 400m, 33°24'S 25°56'E, 400m, 5.I.2010, leg. J. Halada (JH); 1♂, Mpumalanga, 20 km NW Nelspruit, 26.XI.2003, leg. J. Halada (JH); 1♂, Kwa Zulu Natal, Oribi George env., 5.II.2003, leg. Snizek (JH); 1♂, O.F.S., 30 km N Colesberg, Orange river, 25.XI.2002, leg. M. Halada (JH); 1♂, West Cape N, EN Clanvilliam Doringbos, 11.X.1999, leg. M. Halada (JH); 2♂♂, Mpumalanga, 20 km SE Nelspruit, 5.-6.I.2004, leg. J. Halada (JH); 1♂, W. Cape, 40 km S Lamberts Bay, 30.X.1999, leg. Ma. Halada (JH); 1♂, Northwest province, Klerksdorf, 11.I.2001, leg. Snizek (JH); 1♂, Kw. Natal N, Louwsburg Itala, 9.XI.2000, leg. J. Halada (JH); 1♂, Kwaz Natal province, 25 km S Polonga, 510m, 27°34'S 31°35'E, 25.I.2010, leg. J. Halada (JH); 1♂, Limpopo, Thabazimbi, 12.XII.2008, leg. Snizek (JH); 1♂, Western Cape, 8 km SW Three Sisters, 31°57.462'S 23°01.702'E, 1050m, 28.-29.XI.2007, leg. Riha (JH); 1♂, Maputoland, SW Emanguzi, 29.I.2003, leg. Snizek; 1♂, N. Transvaal, Ganzakulu, Letaba, Groot river, 9.II.2003, leg. Snizek (JH).
- T a n z a n i a :** 1♀, Pwani province, 15 km W Kibiti, 07°17'S 38°49'E, 100m, 15.I.2007, leg. Kadlekova; 2♂♂, Iringa province, 10 km N Mikumi, 07°20'S 36°57'E, 650m, 10.I.2007, leg. J. Halada (JH); 1♂, Iringa province, 50 km NW Iringa, 07°41'S 35°22'E, 1000m, 7.I.2007, leg. J. Halada (JH); 1♂, Dodoma province, 35 km E Dodoma, 05°54'S 35°45'E, 1100m, 14.XII.2006, leg. (JH).
- Z a m b i a :** 1♀, 50 km W Chingola, 1.-2.I.2003, leg. J. Halada (JH); 1♀, 60 km W Solwezi, 4.-6.I.2003, leg. J. Halada (JH); 1♂, 15 km S Kapiri Mposhi, 16.-17.I.2003, leg. J. Halada.
- Z i m b a b w e :** 1♂, Mushandike, Sanctuary Masvingo, 9.-11.XII.1998, leg. Ma. Halada (JH); 2♂♂, Chimanimani NP, 14.XII.1998, leg. J. Halada (JH); 1♂, Ngezi Rec. Park Kwekwe, 1.VII.1998, leg. J. Halada (JH).

***Cerceris tricolorata amaura* SCHLETTERER, 1891 (5♀♀, 8♂♂)**

- C e n t r a l A f r i c a R e p u b l i c :** 1♀, Lobaye province, near Grima, 50 km NE Bambio, Ngoto Forest, 450m, 13.-14.VI.2009, leg. Kudrna (JH); 1♀, 90 km NE Nola (GPS) 04°07'N 16°37'E, 560m, 22.IV.2009, leg. J. Halada (JH); 1♀, 3♂♂, 45 km E Nola (GPS) 03°32'N 16°26'E, 8.VI.2009, leg. J. Halada (JH); 2♀♀, 1♂, 90 km NE Nola (GPS) 04°07'N 16°37'E, 560m, 5.-9.XII.2010, leg. J. Halada (JH); 1♂, 35 km NE Nola, 620m, 03°46'N 16°13'E. 12.XII.2008, leg. J. Halada (JH); 1♂, 90 km NE Nola (GPS) 04°07'N 16°37'E, 560m, 22.II.2009, leg. J. Halada (JH); 2♂♂, 45 km E Nola (GPS) 03°40'N 16°26'E, 17.XII.2008, leg. J. Halada (JH).

***Cerceris tyrannica* F. SMITH, 1856 (7♀♀)**

- M a l i :** 2♂♂, 180 km SW Gao, 13.VIII.1991, leg. Max Schwarz (Gui); 3♂♂, 10 km S Mopti, 20.VIII.1991, leg. Max Schwarz (Gui); 2♂♂, 30 km NE Hombori, 18.VIII.1991, leg. Max Schwarz (Gui).

***Cerceris vagula* KOHL, 1906 (5♀♀, 13♂♂)**

- K e n y a :** 2♀♀, 6♂♂, Voi (Tsavo), 23.III.-4.IV.1997, leg. Ma. Halada; 3♀♀, 4♂♂, Voi (Tsavo) env., 8.-18.XI.1996, leg. Mi. Halada; 1♂, Voi (Tsavo) env., 22.XI.-2.XII.1996, leg. Mi. Halada; 1♂, Voi env., Sagala env., 750m, 13.-19.II.2011, leg. Snizek; 1♂, Voi, 10.XII.1999, leg. Snizek.

***Cerceris varicineta* CAMERON, 1905 (1♀)**

South Africa: 1♀, Maputoland, SW Emanguzi, 29.I.2003, leg. Snizek.

***Cerceris ventripilosa* EMPEY, 1972 (1♀, 3♂♂)**

Namibia: 1♀, 2♂♂, Karibib, 23 km N Karibib, 27.II.1990, leg. Max Schwarz; 1♂, Okohandja, 17 km W Okohandja, 19.II.1990, leg. Max Schwarz.

***Cerceris vigilans* F. SMITH, 1856 (1♀, 19♂♂)**

Kenya: 2♂♂, Voi (Tsavo) env., 8.-15.XI.1996, leg. Mi. Halada (JH); 2♂♂, Voi, 10.XII.1999, leg. Snizek (JH); 1♂, Mwingi env., 7.IV.2007, leg. M. Halada (JH); 1♂, Mwingi, Kangonde vadi, 18.IV.2007, leg. M. Halada (JH).

Namibia: 2♂♂, Otjowarongi, 3 km NE Kalkfeld, 2.III.1990, leg. Max Schwarz; 2♂♂, Tsumeb, 30 km E Namutoni, 7.III.1990, leg. Max Schwarz; 2♂♂, 100 km SW Rundu, 1.II.1993, leg. J. Gusenleitner.

South Africa: 1♀, Northern Transvaal, N Nylstroom, 24°40'S 28°30'E, 1200m, 14.I.2008, leg. M. Halada (JH); 2♂♂, KwazuluNatal province, 20 km N Greytown, 28°58'S 30°34'E, 1140m, 18.I.2010, leg. J. Halada (JH); 1♂, Limpopo province, 35 km W Hoedspruit, 24°23'S 30°40'E, 470m, 19.XII.2009, leg. J. Halada (JH).

Tanzania: 3♂♂, Pwani province, ca. 15 km W Kibiti, 15.+17.I.2007, leg. Kudrna (JH); 1♂, Pwani province, 15 km W Kibiti, 15.I.2007, leg. Kadlecová (JH).

***Cerceris yngvei* CAMERON, 1908 (1♀)**

Zimbabwe: 1♀, Mount Selinda, 12.XII.1998, leg. J. Halada.

The following 155 specimens could not be named: Botswana (1♀), Ghana (1♂), Kenya (4♀♀, 46♂♂), Madagascar (1♀), Mali (18♀♀, 32♂♂), Mozambique (1♂), Namibia (10♀♀, 33♂♂), South Africa (3♂♂), Zentral African Republic (1♂) and Zimbabwe (4♂♂).

Description of new species of Subsaharan Africa***Cerceris malickyi* DOLLFUSS nov.sp. (Figs 1, 2, 3, 4, 5, 6)**

Records: Holotype: ♀, Nigeria, Gashaka Gumfi NP, 30 km SE Serti env., 7°21'N 11°32'E, 380-560m, 24.IV.-8.V.2011, leg. J. Halada (OÖLM). Paratypes: ♀, Nigeria, Gashaka Gumfi NP, 30 km SE Serti env., 7°21'N 11°32'E, ~450m, 24.IV.-8.V.2011, leg. J. Halada; ♂, Nigeria, Gashaka Gumfi NP, 30 km SE Serti env., 7°21'N 11°32'E, 380-560m, 24.IV.-8.V.2011, leg. J. Halada.

Etymology: In honor of Univ.-Prof. Dr. Hans Malicky, Lunz, Austria.

Recognition of female: The female of *Cerceris malickyi* is characterized by having the tergum I with a small apomedian fossa and the hindcoxa has no longitudinal carina. The anterior margin of the clypeus is nearly straight and has two distinct teeth. The median part has another two teeth near the anterior margin (Fig. 1). The inner orbits are distinctly divergent anteriorly and the propodeal enclosure is medially coarsely longitudinally striate and laterally slightly obliquely striate. The vertex anterior of the ocelli is coarsely longitudinally striate and punctate. The wings are fuscous and sternum II has no raised area.

The female of *Cerceris malickyi* reminds me of *C. iniqua* KOHL, 1894, in having a nearly all black thorax, an ochreous yellow gaster and fuscous wings, but it differs distinctly in the shape of the clypeus (Fig. 1). Additionally, the vertex is longitudinally striate and the propodeal enclosure medially longitudinally and laterally obliquely striate. The scutum is

micropunctate and the terga II – V are dull and only laterally punctate. (In *C. iniqua* the clypeus has a nasiform process on the median lobe and the vertex is punctato-rugose. The propodeal enclosure has horizontal striae and the scutum is longitudinally striato-punctate. The terga II – V are shining and sparsely punctate).

Description: ♀, 13 mm. Black, following parts yellow: clypeus (anterior margin black), lateral parts of frons and subantennal sclerite, basal spot on mandible, lateral spot on gena, scutellum and metanotum, an apical spot on forefemur and small spot on foretibia. Gaster except first segment ochreous yellow, wings dark fuscous and flagellum dorsally black, ventrally brown.

Clypeus dull micropunctate, frons densely punctate, vertex ante ocelli striato-punctate, post ocelli punctate. Pronotal collar dull. Scutum micropunctate, laterally punctate. Scutellum and metanotum micropunctate. Mesopleuron coarsely vertically rugose, punctate and more or less tuberculate. Epimeron of mesopleuron not produced into horizontal crest. Tegula micropunctate. Propodeum punctato-rugose. Propodeal enclosure medially longitudinally striate, laterally obliquely striate. Clypeus nearly straight with two teeth and median lobe with two teeth near anterior margin (Fig. 1). Interantennal carina acute and long, nearly to anterior ocellus. Tergum I distinctly broader than long, with small apomedian fossa. Hindcoxa without longitudinal carina. Pygidial area rugose, with setae (Fig. 3). Sternum II without raised area, Sternum V with oblique erect setae and sternum VI with tuft of setae. Flagellum (Fig. 2).

Recognition of male: The male of *Cerceris malickyi* is characterized by having the tergum I with a small apomedian fossa and the hindcoxa has no longitudinal carina. The median part of the clypeus is slightly produced (Fig. 4) and the flagellomeres are distinctly longer than wide (Fig. 5). The inner orbits are slightly divergent anteriorly and the propodeal enclosure is coarsely obliquely striate. The terga II – V are dull and sparsely slightly punctate. The sternum II has no raised area and the sternum VI has a tooth and a tuft of setae apicolaterally. The pygidial area is subrectangular (Fig. 6). The wings are fuscous and the mesopleuron venter is dull and impunctate. The male of *Cerceris malickyi* reminds me of *C. iniqua* KOHL, 1884, in having a nearly all black thorax, an ochreous gaster and fuscous wings, but differs in having flagellomeres VIII – XI without tyloidea and the mesopleural venter dull and impunctate. (*C. iniqua* has distinct tyloidea on the flagellomeres VIII – XI and the mesopleural venter is punctate).

Description: ♂, 13 mm. Black, following parts yellow: Clypeus (apical half black), spot on gena, lateral spots on pronotal collar, two spots on scutellum and spot on epimeron of mesopleuron. Segments II – VII of gaster ochreous yellow. Wing fuscous. Clypeus and frons dull, slightly punctate (Fig. 4). Frons ante ocelli longitudinally punctato-rugose and micropunctate. Vertex micropunctate and sparsely punctate. Pronotal collar as in vertex, pronotum laterally coarsely rugose. Scutum micropunctate (dull) and densely punctate, scutellum and metanotum dull and sparsely punctate. Propodeum irregularly punctate laterally. Propodeal enclosure coarsely obliquely striate with fine longitudinal groove. Mesopleuron coarsely punctate, mesopleuron venter dull and impunctate. Tergum I distinctly broader than long and with small apomedian fossa. Sternum I without raised area and sternum VI with tooth and tuft of setae apicolaterally. Sternum VII with long setae. Tegula dull and pygidial area subrectangular (Fig. 6). Flagellomeres VIII – XI without tyloidea and distinctly longer than broad (Fig. 5)

Geographic distribution: Nigeria.

***Cerceris pseudowaltoni* DOLLFUSS nov.sp. (Figs 7, 8, 9, 10, 11, 12)**

R e c o r d s : **Holotype:** ♀, SE Kenya, Voi (Tsavo), 23.III.-4.IV.1997, leg. Ma. Halada (OÖLM).
Paratypes: 23♂♂, Kenya, Voi env. (Tsavo), 22.XI.-2.XII.1996, leg. Mi. Halada; 1♂, Kenya, Voi, XII.1999, leg. M. Snizek; 1♂, Kenya, Voi env., (Tsavo), 8.-18.XI.1996, leg. Mi. Halada; 1♂, Kenya, Voi (Tsavo), 22.XI.-2.XII.1996, leg. M. Snizek; 1♂, Kenya, Nairobi, Salama env., 25.XI.1999, leg. M. Snizek.

E t y m o l o g y : The female is similar to *Cerceris waltoni* ARNOLD, 1940.

R e c o g n i t i o n : The female of *Cerceris pseudowaltoni* has no longitudinal carina on the hindcoxa. The apical margin of the clypeus is straight with two teeth and preapical there are another two teeth (Fig. 7). The sterna IV and V have distinct teeth apicolaterally and sternum II has a trace of a median longitudinal carina. The mesopleuron is tuberculate, but the epimeron has no crest. The prosternum has no carina and the propodeal enclosure is smooth and shining, medially with a longitudinal crenulate groove. Scutum and terga are coarsely and densely punctate. Tergum I is as wide as long.

The female of *Cerceris waltoni* is similar to *C. pseudowaltoni*, but differs in having the anterior margin of the clypeus with four small teeth and the sterna IV and V have no teeth apicolaterally. Additionally, the mesopleuron has no tubercle laterally, the propodeal enclosure has no median groove and the terga I and II are ferruginous (ARNOLD 1940: 107). (The female of *C. pseudowaltoni* has the anterior margin of the clypeus with only two teeth and the sterna IV and V have distinct teeth apicolaterally. The mesopleuron has a tubercle laterally and the propodeal enclosure has a crenulate groove medially. Additionally, the terga I and II are black with yellow spots.). The female of *Cerceris tricolorata nigrifrons* has a similar clypeus as *C. pseudowaltoni* but differs in having the hindcoxa with a longitudinal carina and sternum V is medially deepened with two erect teeth medially and crenulated laterally. Additionally the tergum I is fuscous. (The female of *C. pseudowaltoni* has no longitudinal carina on the hindcoxa and the sternum V is differently shaped. Additionally, the tergum I is black with yellow spots.). The male of *Cerceris pseudowaltoni* has no longitudinal carina on the hindcoxa. The apical margin of the clypeus has three teeth (Fig. 10). The sterna IV – VI have distinct lateroapical teeth and the sternum II has a trace of a median longitudinal carina. The prosternum has no carina and the epimeron no crest. The propodeal enclosure is smooth and shiny and has a median longitudinal groove. The thorax and gaster are coarsely punctate as in a female. The tergum I is a little longer than maximal width.

D e s c r i p t i o n : *Cerceris pseudowaltoni* has no longitudinal carina on hindcoxa. Sterna IV and V (VI) have distinct teeth apicolaterally and sternum II has trace of median longitudinal carina.

♀, 7 mm. Black, with following parts yellow: clypeus and frons, propodeal collar laterally, tegula partly, metanotum, tergum I apicomediaally, tergum II laterally, tergum III and V apically, fore- and midtibia dorsally, hindtibia basally, fore- and midfemora dorsoapically, hindtrochanter and mandible (except apex). Flagellum dorsally brown, ventrally yellowish-brown. Wings hyalin, apically fuscous. Lower half of frons and lateral sclerites of clypeus with appressed silvery setae. Head (except median lobe of clypeus) fairly coarsely and deeply punctate, largest punctures on vertex about one third as wide as anterior ocellus, interspaces of greater part one and a half times as wide as punctures. Thorax, (except mesopleura), fairly shiny, pronotal collar, scutum and scutellum with little more widely spaced and slightly larger punctures than those of vertex; metanotum

inpunctate. Propodeal enclosure smooth and shiny, medially with longitudinal groove. Terga I – V densely and very coarsely punctate. Sterna II – V shiny, laterally punctate. Apical margin of clypeus straight with two lateral teeth, preapical another two teeth (Fig. 7). Prosternum without carina, mesopleuron tuberculate laterally and epimeron without crest. Pygidial area basally narrower than apically, apically rounded (Fig. 9). Flagellum (Fig. 8).

♂, 5 – 7 mm. Black, with following parts yellow: mandible (except apex), clypeus, frons, pronotal collar laterally, tegula lateral half, metanotum, apicomedian spot on tergum I, lateral spots on tergum II, apical one third of tergum III, small apical spots on tergum IV, tergum V, fore- and midtibia nearly all, hindtibia dorsolaterally, fore and midfemora dorsoapically, hindfemora basally, mid- and hindtrochanter and hindcoxa. Flagellum darkbrown dorsally, yellowish-brown ventrally. Wings hyalin, apically fuscous. Clypeus and frons punctate and micropunctate, vertex, anterior part of pronotal collar, scutum, scutellum and propodeum shiny and irregularly coarsely punctate. Mesopleuron more densely coarsely punctate. Terga I – VI very coarsely and densely punctate. Sterna II – V laterally coarsely punctate. Anterior margin of clypeus with three small teeth (Fig. 10), propleuron without carina, mesopleuron without tubercle and epimeron without crest. Tegula impunctate, propodeal enclosure smooth, shiny with longitudinal groove. Flagellum (Fig. 11). Pygidial area (Fig. 12).

G e o g r a p h i c d i s t r i b u t i o n : Kenya.

***Cerceris saengeri* DOLLFUSS nov.sp. (Figs 13, 14, 15)**

R e c o r d s : Holotype: ♀, Namibia, Rundu, 22.I.1993, leg. J. Gusenleitner (OÖLM).

E t y m o l o g y : In remembrance of Univ.-Prof. Dr. Karl Sängler, University of Vienna, who passed away in February 2019.

R e c o g n i t i o n : The female of *Cerceris saengeri* is characterized by having a broadly emarginate clypeal process which is separated at the sides from the lateral sclerites (Fig. 13). The terga I – IV have a small apomedian fossa and the hindcoxa has no longitudinal carina. The tergum I is broader than long and the prosternum has no carina. The propodeal enclosure is smooth and punctate laterally and the sternum II has no raised area. The female of *Cerceris diodonta* SCHLETTERER, 1887, is similar to *C. saengeri* in having variable mixed ferruginous and black colour on head, thorax and gaster, but *C. diodonta* differs distinctly in the shape of the clypeal process, the propodeal enclosure is obliquely striate and the pygidial area distinctly narrowing apically. The female of *Cerceris multipicta* F. SMITH, 1873, is also similar to *C. saengeri* in having a broadly emarginate clypeal process, but this is not separated at the sides from the lateral sclerites. The anterior margin of the clypeal process is acute and the body is finely punctate. Additionally, this species has more yellow spots and the body is larger (20 – 21 mm). (The female of *C. saengeri* has a clypeal process separated from the lateral sclerites and the anterior margin is broad. The head, the thorax and the gaster are more coarsely punctate. Additionally, the body has only few yellow spots and is smaller (13 mm)).

D e s c r i p t i o n : ♀, 13 mm. Head, thorax and gaster ferruginous, partly black and yellow. Following parts yellow: Clypeal process (except apical margin) and lateral parts of clypeus, lateral spots on frons, inerantennal carina, lateral spots on tergum II and small lateral spots on tergum III. Scutum black anteriorly, propodeal enclosure margined with black. Sterna medially black, laterally ferruginous. Flagellum and leg ferruginous.

Mandible basally ferruginous, apically one third black. Wings hyalin, apically fuscous. Body with long white setae. Clypeus, frons and Vertex densely punctate, pronotum, scutum, mesopleuron propodeum lateral and terga I – VI densely punctate as in vertex. Scutellum and metanotum sparsely punctate (punctures 1 – 2 diameter apart). Sterna punctate laterally. Propodeal enclosure smooth, laterally punctate and only with trace of median groove. Tegula nearly smooth. Clypeal process nearly four times broader than long, deeply and widely emarginate and separated at sides from lateral sclerites; anterior margin of clypeal process broad and flat (Fig. 13). Anterior margin of clypeus slightly emarginate, with two tiny teeth laterally. Mandible apically with one broad tooth and rounded apex (Fig. 13). Interantennal carina acute, nearly reaching median ocellus. Flagellomere III only slightly longer than IV (Fig. 14). Inner orbits divergent anteriorly. Prosternum finely punctate and without carina. Mesopleuron with small tubercle (hardly to be seen), epimeron of mesopleuron not produced into a horizontal crest. Hindcoxa without longitudinal carina. Terga I – IV with small apomedian fossa. Tegum I broader than long and Sternum II without raised area. Pygidial area basally nearly as broad as apically, apically slightly emarginate (Fig. 15).

♂ unknown.

Geographic distribution: Namibia.

***Cerceris schalleri* DOLLFUSS nov.sp. (Figs 16, 17, 18, 19)**

Records: Holotype: ♀, Mali, 30 km N Bamako, 29.VII.1991, leg. Max Schwarz (OÖLM).
Paratype: ♀, Mali, 100 km NE San, 21.VIII.1991, leg. Max Schwarz.

Etymology: In remembrance of Univ.-Prof. Dr. Friedrich Schaller, University of Vienna, Austria.

Recognition: The female of *Cerceris schalleri* is characterized by having the terga I – V with small apomedian fossa and the hindcoxa has no longitudinal carina. The clypeal process is highly erected, semicircularly emarginate and separated at the sides from the lateral sclerites (Figs 16, 17). The tergum I is broader than long and the prosternum has no carina. The mesopleuron is tuberculate and the epimeron is produced into a horizontal carina (crest). The propodeal enclosure is smooth with a fine longitudinal median groove. The sternum II has no raised area and the terga II – IV are produced laterally. The female of *Cerceris saengeri* also has an emarginate clypeal process, but it is wider and the anterior margin is wide (Fig. 13). The epimeron of the mesopleuron is not produced into a horizontal crest. Additionally, the body is predominantly ferruginous only with few yellow spots. (The female of *C. schalleri* has a semicircularly emarginated clypeal process and an acute anterior margin (Fig. 16). The epimeron is produced into a horizontal crest and the body is black with many yellow spots). The female of *Cerceris multipicta* F. SMITH, 1873, also has a broadly emarginate clypeal process, but it is not separated at the sides from the lateral sclerites and this species is much longer (20 – 21 mm). (The female of *C. schalleri* has the clypeal process not so broadly emarginate (Fig. 16) and it is separated at the sides from the lateral sclerites. The species is smaller (9 mm)).

Description: ♀, 9 mm. Black, following parts yellow: clypeal process (anterior margin black), lateral spots on frons, scape, lateral spots on pronotal collar, anterior half of tegula, metanotum, small apical bands on terga I – IV, fore- and midtibia, apical half of fore- and midfemora, hindleg partly. Mandible basal half yellowish-brown, flagellomeres

dorsally brown, ventrally yellowish-brown. Wing hyalin, apically fuscous. Clypeus and frons dull, closely and finely punctate. Vertex, pronotal collar, scutum propodeum lateral, terga I – V densely punctate. Scutellum sparsely punctate, tegula smooth. Propodeal enclosure smooth, only with trace of median groove. Mesopleuron coarsely punctate, with small tubercle, epimerum of mesopleuron produced into horizontal crest. Sterna II – V laterally punctate. Clypeal process highly raised and semicircularly emarginate, separated at the sides from lateral sclerites. Anterior margin of clypeus median with distinct tooth (Fig. 16). Pronotal collar laterally rounded. Propleuron without carina. Terga I – V with small apomedian fossa. Tergum I broader than long. Terga II – IV produced laterally (as in palearctic *chromatica*-group). Hindcoxa without longitudinal carina and sternum II without raised area. Flagellum (Fig. 18). Pygidial area oval, basally as broad as apically (Fig. 19).

♂ unknown.

Geographic distribution: Mali.

***Cerceris schwarzi* DOLLFUSS nov.sp. (Figs 20, 21, 22, 23, 24, 25, 26)**

Records: **Holotype:** ♀, Namibia, Otjiwarongo, 25 km NW Otjiwarongo, 3.III.1990, leg. Max Schwarz (OÖLM). **Paratypes:** 1♀, 2♂♂, Namibia, Otjiwarongo, 25 km NW Otjiwarongo, 3.III.1990, leg. Max Schwarz; 3♂♂, Namibia, Outjo, 24 km S Kamanjab, 5.III.1990, leg. Max Schwarz; 1♂, Namibia, Otjiwarongo, 15 Km NW Otjiwarongo, 3.III.1990, leg. Max Schwarz.

Etymology: In honor of the collector Max Schwarz, Linz-Ansfelden, Austria.

Recognition: The female of *Cerceris schwarzi* is characterized in having the hindcoxa without a longitudinal carina and the terga II – V with small apomedian fossa. The anterior margin of the broad clypeus is straight with two small teeth and a small rectangularly elevated process with two small horizontal carinae (Fig. 20, 21). The propodeal collar has laterally a blunt tubercle and the mesopleuron has a small tooth laterally, epimeron without a crest. The propodeal enclosure is irregularly microstriate. The female of *Cerceris spectrum* ARNOLD, 1936, is similar to *C. schwarzi* but differs in having the anterior margin of the clypeus with three (five) blunt teeth in the middle and two flattened tubercles placed a little above the middle. Additionally, the pronotal collar is evenly rounded laterally and the bodylength is 22 mm. (The female of *C. schwarzi* has the anterior margin of the clypeus straight with two small teeth and a small rectangularly elevated process with two horizontal carinae (Figs 20, 21). Additionally, the pronotal collar has a blunt tubercle laterally and the bodylength is 15 mm). The female of *Cerceris multipicta* F. SMITH, 1873, is also similar to *C. schwarzi*, but differs in having the anterior part of the clypeus deeply and broadly semi-lunary emarginated with long brush-like setae at the corners of the emargination and the median part of the clypeus is not separated at the sides from the lateral sclerites. Additionally, the pronotal collar is evenly rounded laterally and the bodylength is 19 – 23 mm. (*C. schwarzi* has a distinctly differently shaped clypeus, the pronotal collar has a blunt tubercle laterally and the bodylength is 15 mm). The female of *Cerceris nasidens* SCHLETTERER, 1887, is similar to *C. schwarzi*, but differs in having a clypeal process, which is convex and more or less free at its anterior margin in lateral view, the process is more or less nasiform. Additionally, the pronotal collar is evenly rounded laterally and the propodeal enclosure is densely punctate. (The female of *C. schwarzi* has a differently shaped clypeus, the pronotal collar has a blunt tubercle laterally and the propodeal enclosure is irregularly microstriate).

The male of *Cerceris schwarzi* is characterized by having the hindcoxa without a longitudinal carina and the terga II – V with small apomedian fossae. The median area of the clypeus is produced with three distinct teeth and a longitudinal carina medially (Fig. 24). The ultimate flagellum is distinctly bent (Fig. 25). The pronotal collar is nearly rectangularly shaped laterally. The propodeal enclosure is shiny and more or less micropunctate. The mandible has a distinct tooth basally (Fig. 24). The male of *Cerceris nasidens* is similar to the male of *C. schwarzi* but differs in having a reddish-brown anterior margin of the clypeus and no longitudinal carina on the median part. Additionally, the propodeal enclosure is punctate. (The male of *C. schwarzi* has a black apical margin of the clypeus and a longitudinal carina on the median part of the clypeus. Additionally, the propodeal enclosure is smooth or slightly micropunctate). The male of *Cerceris spectrum* Arnold, 1936, is similar to the male of *C. schwarzi*, but differs in having the clypeus median part without a longitudinal carina and the sterna II – IV with long appressed setae. Additionally, the body length is 20 – 21 mm. (The male of *C. schwarzi* has the median part of the clypeus with a longitudinal carina medially (Fig. 24). Additionally, the sterna II – IV have more sparse setae and the bodylength is 10 – 13 mm). The male of *Cerceris multipicta* F. SMITH, 1873, is also similar to the male of *C. schwarzi* but differs in having the tergum I twice as long as wide, and the pronotal collar is evenly rounded laterally. Additionally, the sternum VII has long dense erect setae and the bodylength is 15 – 22 mm. (The male of *C. schwarzi* has the tergum I as long as wide and the pronotal collar is laterally nearly rectangularly shaped. Additionally, the sternum VII is glabrous dull, apicolaterally with short setae and the bodylength is 10 – 13 mm).

D e s c r i p t i o n : Hindcoxa without longitudinal carina and terga II – V with small apomedian fossa.

♀, 15 mm. Black, following parts yellow: head (except of anterior part of vertex and apex of mandibles), lateral part of pronotal collar, scutellum, metanotum, propodeum (except propodeal enclosure partly), tegula, epimeron, spot on mesopleuron, legs, terga I – V (except median black spots), sterna I – VI (partly yellowish-brown). All spots varying to yellowish-brown. Pygidial area brown. Wings yellowish-brown, apically fuscous. Clypeus and frons microstriate, vertex finely punctato-rugose. Pronotal collar, scutum, metanotum and propodeum laterally finely punctato-rugose. Propodeal enclosure irregularly microstriate and mesopleuron punctato-rugose. Tegula micropunctate. Terga I – V punctate and micropunctate, sterna I – V finely punctate laterally. Pygidial area finely punctate basally. Anterior margin of clypeus straight with two small teeth and small rectangular process with two small horizontal carinae (Fig. 20, 21). Mandible with two rounded teeth (Fig. 20). Pronotal collar with blunt tubercle laterally. Propodeum dull. Mesopleuron with small tubercle and epimeron without crest. Metapleuron coarsely obliquely rugose, mesopleuron venter micropunctate, dull. Pygidial area (Fig. 23) and flagellum (Fig. 22).

♂, 10 – 13 mm. Black, with following parts yellow: Mandible (except apex), Clypeus (except anterior margin), frons, interantennal carina, lateral part of pronotal collar, tegula, scape, lateral spots on scutellum, metanotum, spots on propodeum laterally, lateral spots on terga I – V, tergum VI, foreleg (except coxa), midleg, hindleg (except femur anteriorly and tibia apically). Flagellomeres yellowish-brown, flagellomere XI apically half black, wings hyalin, apically fuscous. Clypeus and frons densely punctato-rugose, vertex densely punctate. Tegula micropunctate. Pronotal collar punctate, scutum densely punctato-

rugose, scutellum and metanotum sparsely punctate, propodeum densely punctato-rugose. Propodeal enclosure smooth and shiny, sparsely micropunctate laterally, metapleuron coarsely obliquely rugose. Terga I – VI and pygidial area densely punctate. Sterna II – V punctate laterally. Clypeus produced with three distinct teeth and longitudinal carina medially (Fig. 24). Flagellomere XI distinctly bent and apically blunt with few fine setae inside (Fig. 25). Pronotal collar nearly rectangularly shaped laterally and propleuron without carina. Mesopleuron with small tubercle laterally, epimeron without cress. Pygidial area (Fig. 26).

G e o g r a p h i c d i s t r i b u t i o n : Namibia.

Aknowledgements

I am obliged to HR Mag. Fritz Gusenleitner, curator of the "Biologiezentrum-Linz" collection, who made it possible for me to study the material. I am also indebted to Mag. Dr. Dominique Zimmermann, curator of the Hymenoptera-collection of the Museum of Natural History Vienna (NHMW), who allowed me to examine specimens of the "Kohl's-collection". I thank Mag. Robert Eglhofer for help with English.

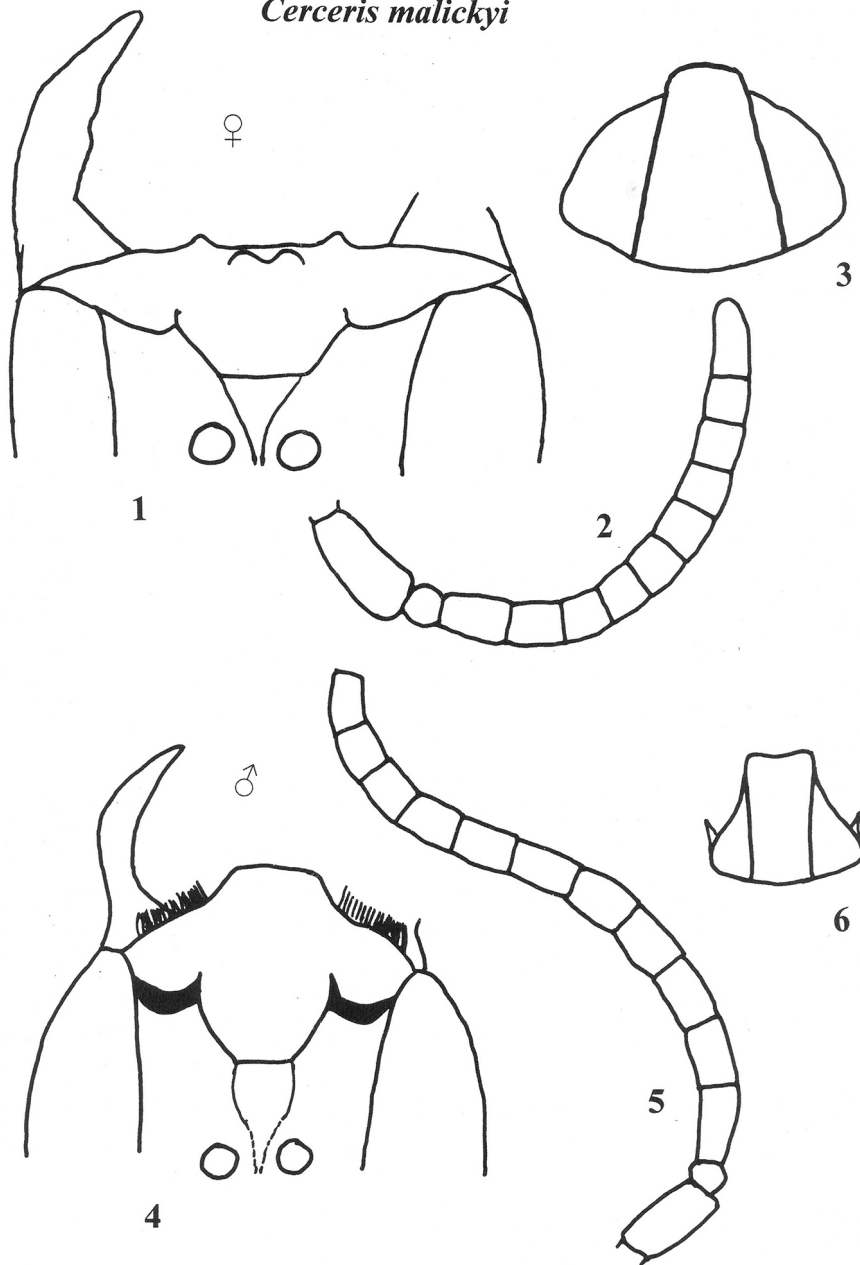
Zusammenfassung

2679 Exemplare der Gattung *Cerceris* LATREILLE (685 ♀♀, 1.994 ♂♂), 61 Arten und 7 Subspecies umfassend, wurden untersucht. Alle Informationen über Fundorte, Fangdaten sowie Namen der Sammler sind aufgelistet. Folgende neue Arten sind beschrieben: *Cerceris malickyi* nov.sp., *Cerceris pseudowaltoni* nov.sp., *Cerceris saengeri* nov.sp., *Cerceris schalleri* nov.sp. und *Cerceris schwarzi* nov.sp.

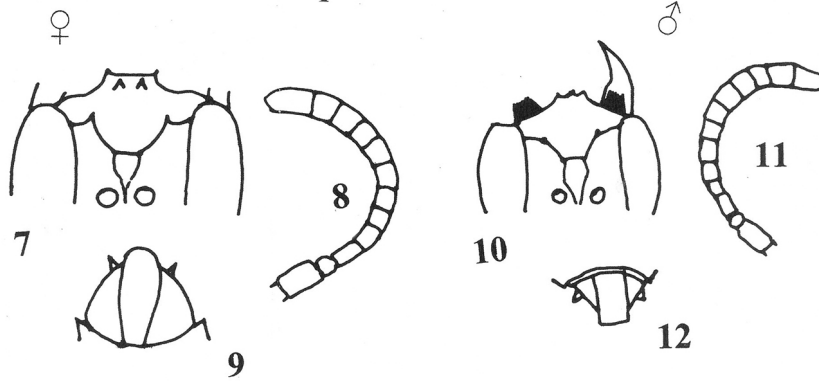
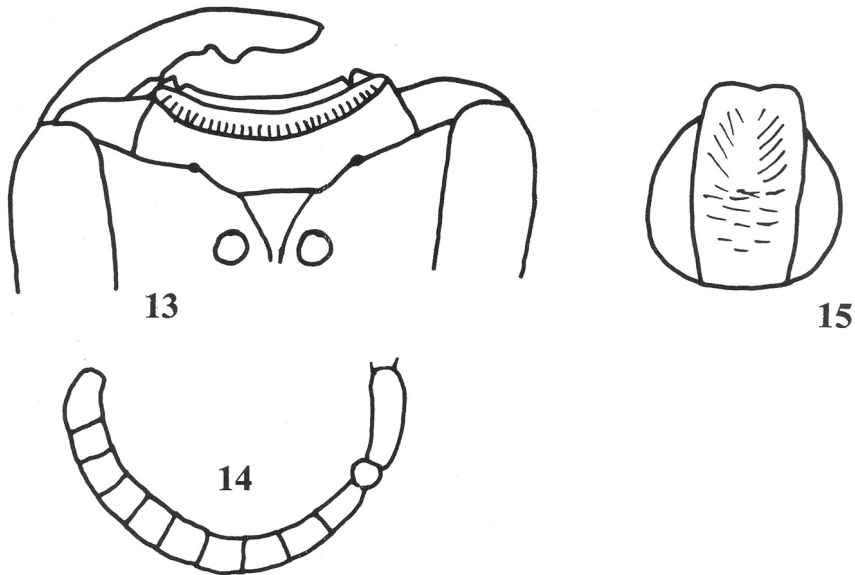
References

- ARNOLD G. (1931): The Sphegidae of South Africa. Part XV (conclusion). — *Annals of the Transvaal Museum* **14**:135-220.
- ARNOLD G. (1940): New species of African Hymenoptera No. 4. — *Annals of the Transvaal Museum* **20**:101-143, pl. V.
- BRAUNS H. (1926): The Ethiopian *Cerceris* species. — *Annals of the Transvaal Museum* **11**:268-337, pls. XL-XLIV.
- GUICHARD K.M. (1993): The genus *Cerceris* (Hymenoptera:Sphecidae) in Arabia. — *Fauna of Saudi Arabia* **13**:152-169.

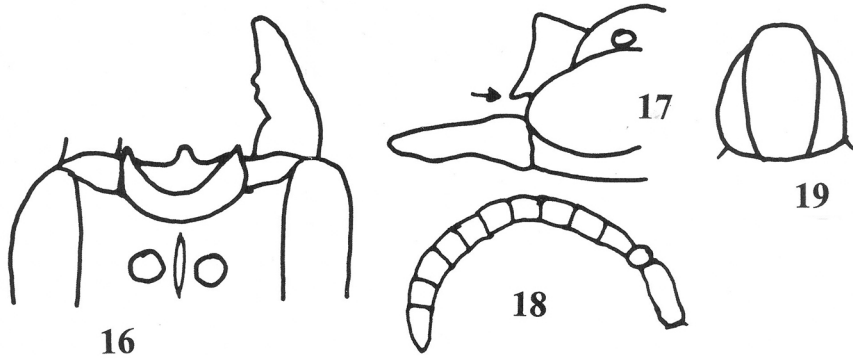
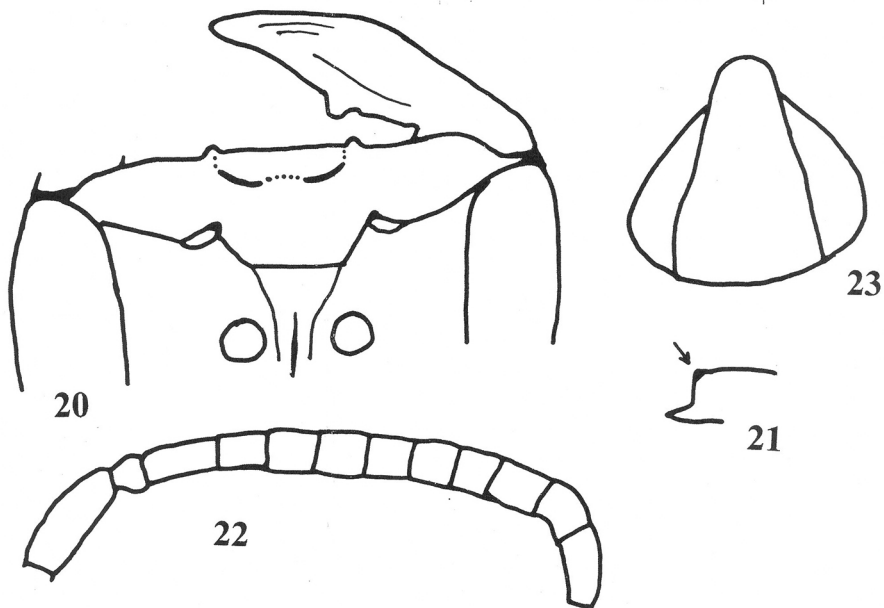
Author's address: Dr. phil. Mag. rer. nat. Hermann Dollfuss
 Dr. Gortgasse 4
 A-3240 Mank, Austria
 E-mail: hermann.dollfuss@aon.at

Cerceris malickyi

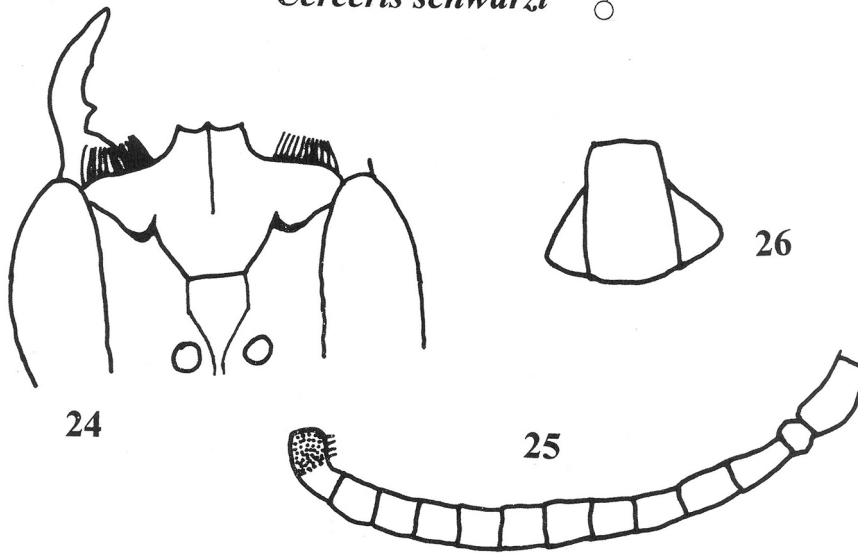
Figs 1-6: *Cerceris malickyi* ♀ (1) clypeus, (2) flagellum, (3) pygidial area. *Cerceris malickyi* ♂ (4) clypeus, (5) flagellum, (6) pygidial area.

Cerceris pseudowaltoni*Cerceris saengeri* ♀

Figs 7-15: *Cerceris pseudowaltoni* ♀ (7) clypeus, (8) flagellum, (9) pygidial area. *Cerceris pseudowaltoni* ♂ (10) clypeus, (11) flagellum, (12) pygidial area. *Cerceris saengeri* ♀ (13) clypeus, (14) flagellum, (15) pygidial area.

Cerceris schalleri ♀*Cerceris schwarzi* ♀

Figs 16-23: *Cerceris schalleri* ♀ (16) clypeus, (17) clypeus lateral view, (18) flagellum, (19) pygidial area. *Cerceris schwarzi* ♀, (20) clypeus, (21) clypeus lateral view, (22) flagellum, (23) pygidial area.

Cerceris schwarzi ♂

Figs 24-26: *Cerceris schwarzi* ♂ (24) clypeus, (25) flagellum, (26) pygidial area.