

PRIMAP-hist v2.2: updated figures

Johannes Gütschow^{*1}, M. Louise Jeffery², Robert Gieseke¹, and
Annika Günther¹

¹Potsdam Institute for Climate Impact Research, Telegraphenberg
A 31, 14473 Potsdam, Germany

²New Climate Institute

February 5, 2021

This document contains updates of the figures from ? using PRIMAP-hist
v2.2 data.

References

*johannes.guetschow@pik-potsdam.de

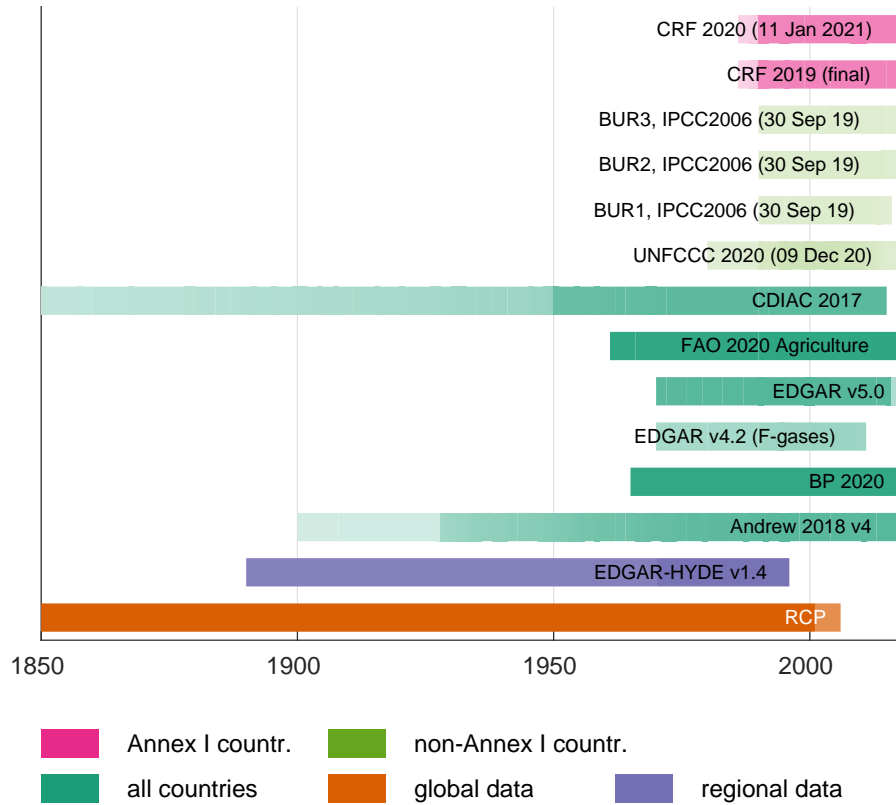


Figure 1: Coverage of years and countries in the sources used for the PRIMAP-hist dataset. The color indicates the country group covered or the regional resolution, while the intensities indicates the fraction of countries in the group covered by the source in each year. The fraction is taken over all gases and categories which can be seen in the CDIAC time series where the flaring time series only starts in 1950. RCP time series for CH_4 end in 2000 leading to the lower coverage after year 2000.

Example of the composite source generator (csg) work

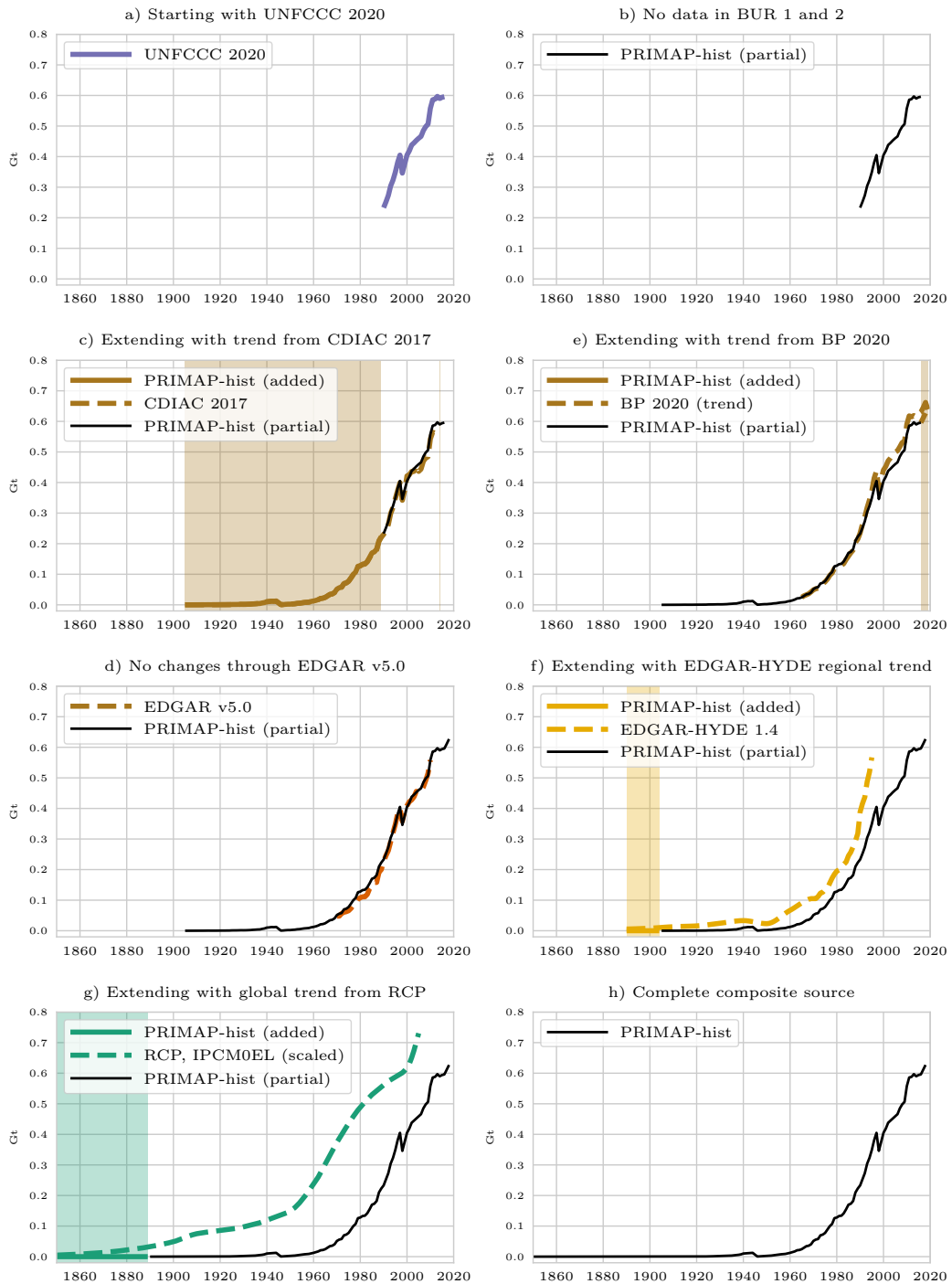


Figure 2: Example for the work of the composite source generator: the creation of the category 1A, CO₂ pathway for South Korea. The buildup starts with the UNFCCC source as there is no CRF data for South Korea. Extrapolation is not needed in this case, so the step is omitted from the figure.

PRIMAP-hist v2.2 country reported priority data by sector for major emitters.

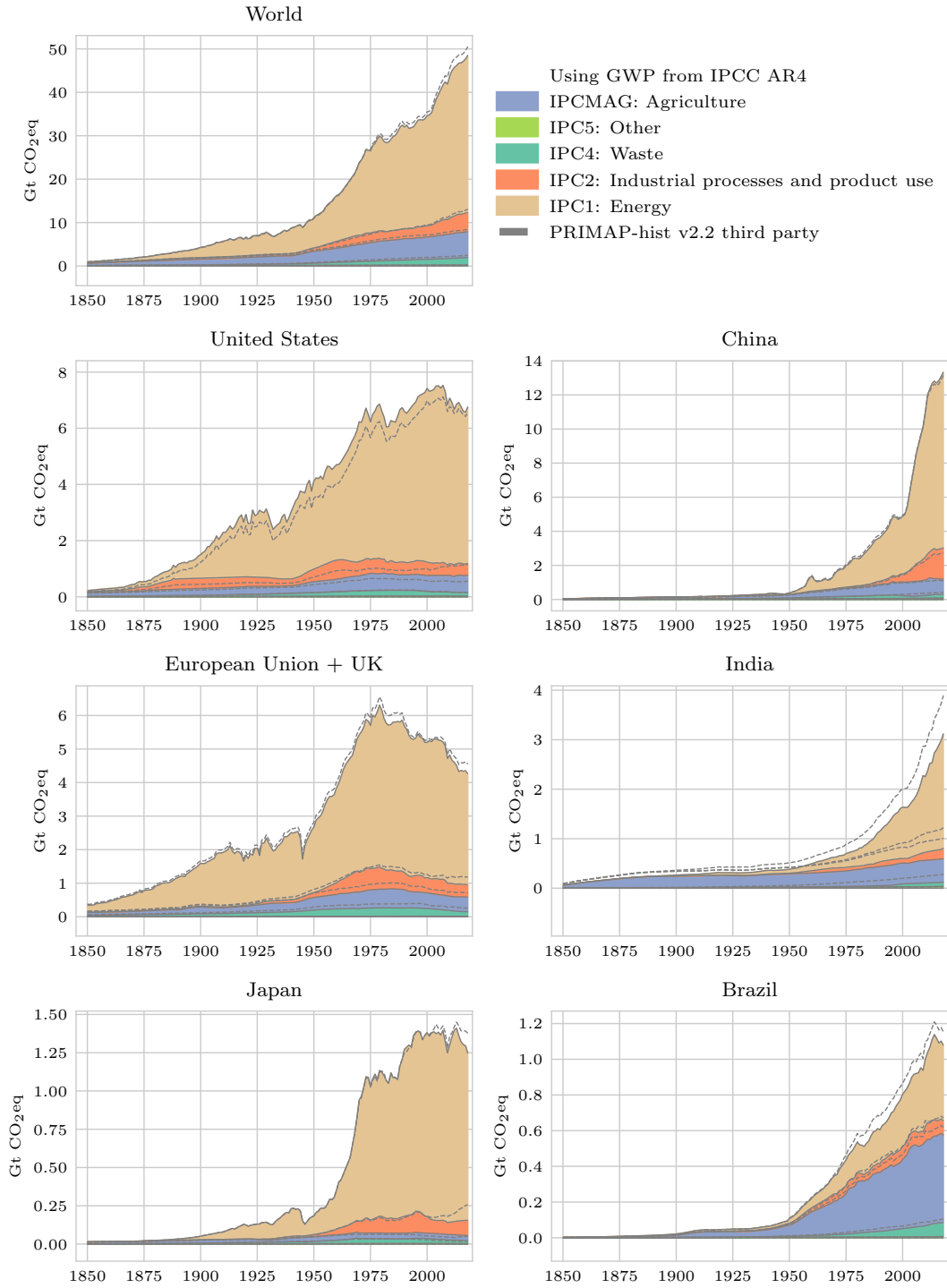


Figure 3: Emissions by sector for major emitters and the world. Where land use emissions are negative, the stacked emissions of the other sectors start at this negative value. International shipping and aviation emissions are not included.

PRIMAP-hist v2.2 country reported priority data by gas for major emitters.

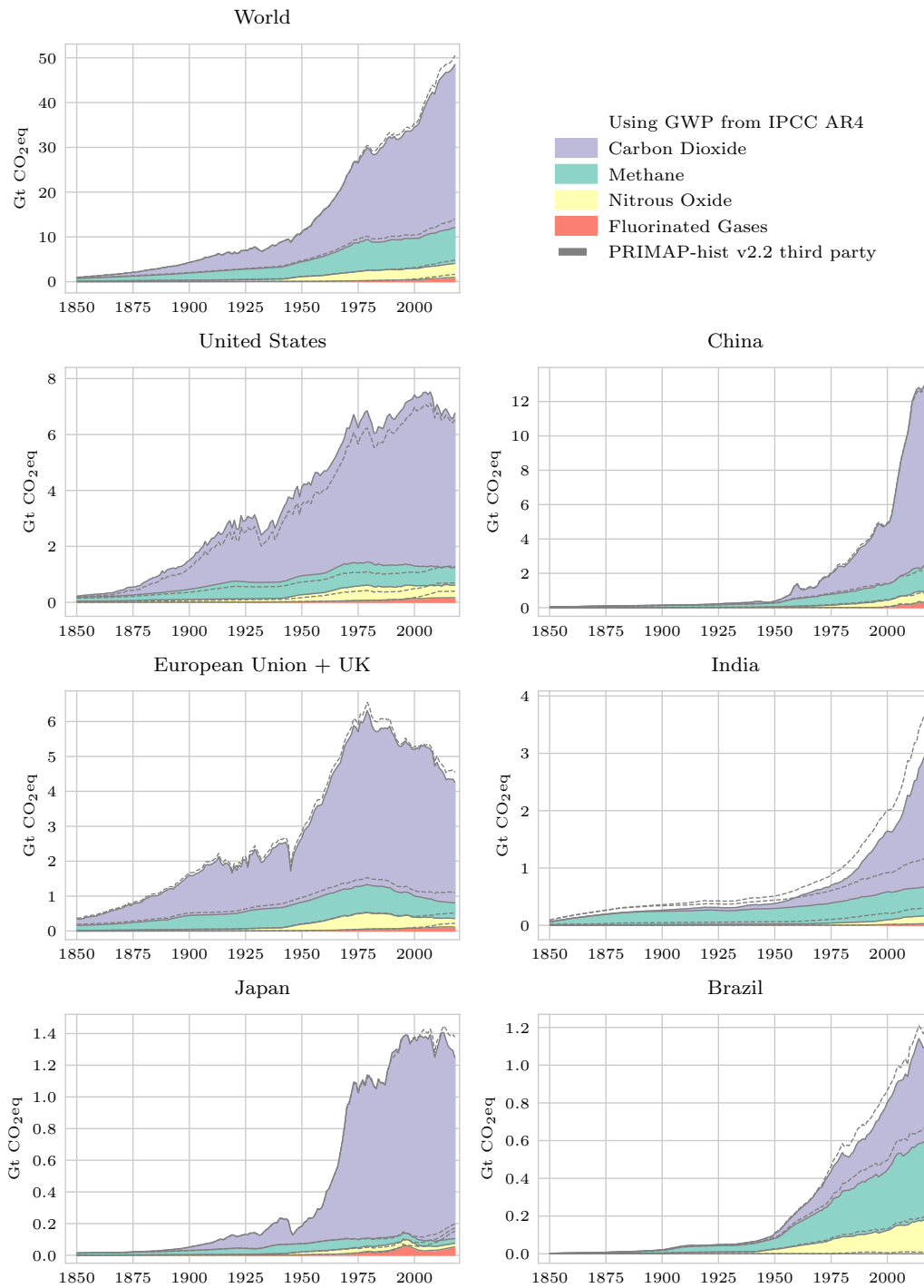


Figure 4: Emissions by gas for major emitters and the world. International shipping and aviation emissions are not included.

Comparison of PRIMAP-hist v2.2 country reported priority and third party priority timeseries with other sources

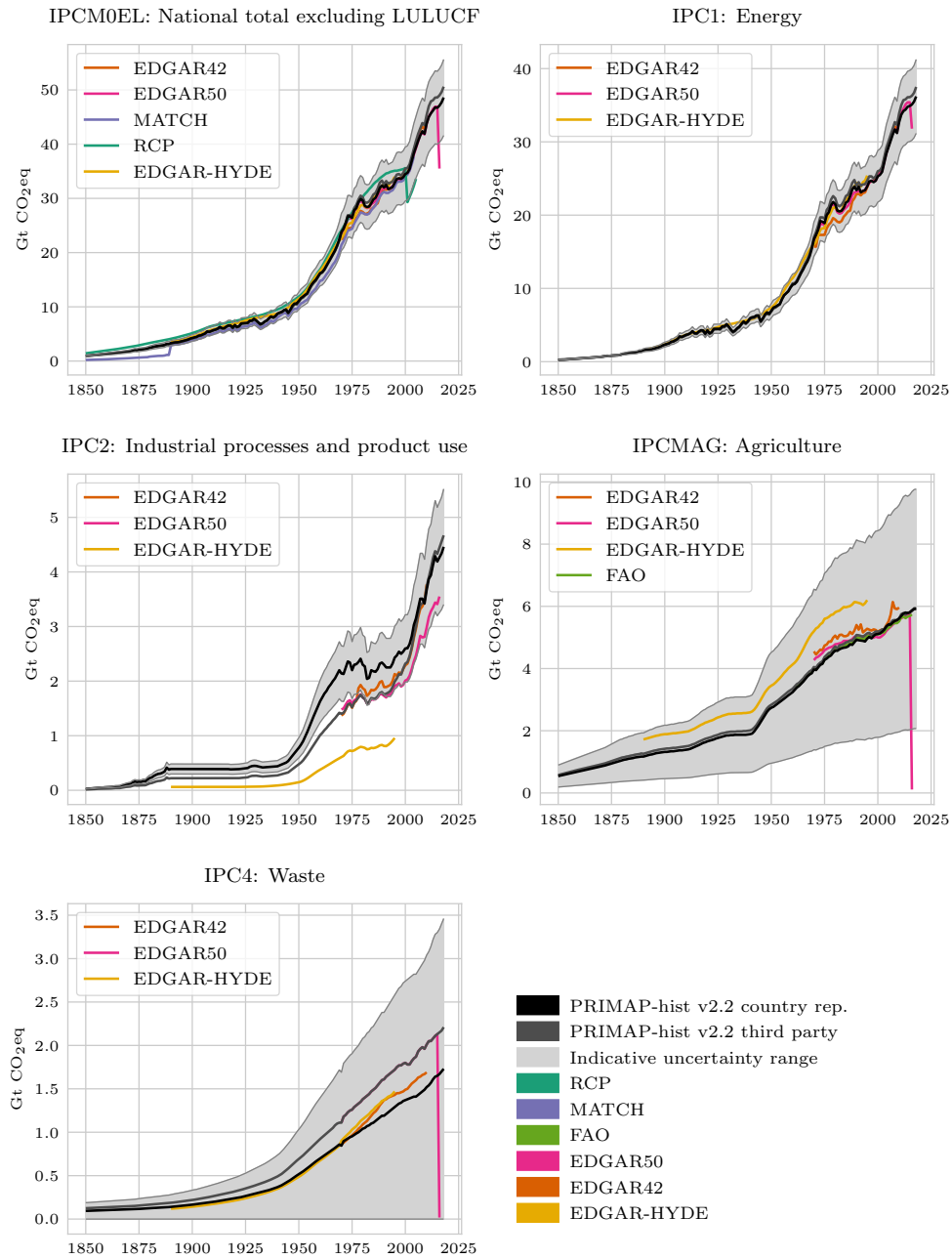


Figure 5: Comparison of the PRIMAP-hist dataset with both individual sources and composite datasets for aggregate Kyoto gases and the main IPCC 2006 categories. Grey shaded areas show the indicative uncertainty range from Table 10 of ? converted to IPCC2006 categories and applied to the PRIMAP-hist country reported priority dataset. Where different uncertainty estimates exist the average value is used. International shipping and aviation emissions are not included.

Comparison of PRIMAP-hist v2.2 country reported priority and third party priority timeseries with other sources

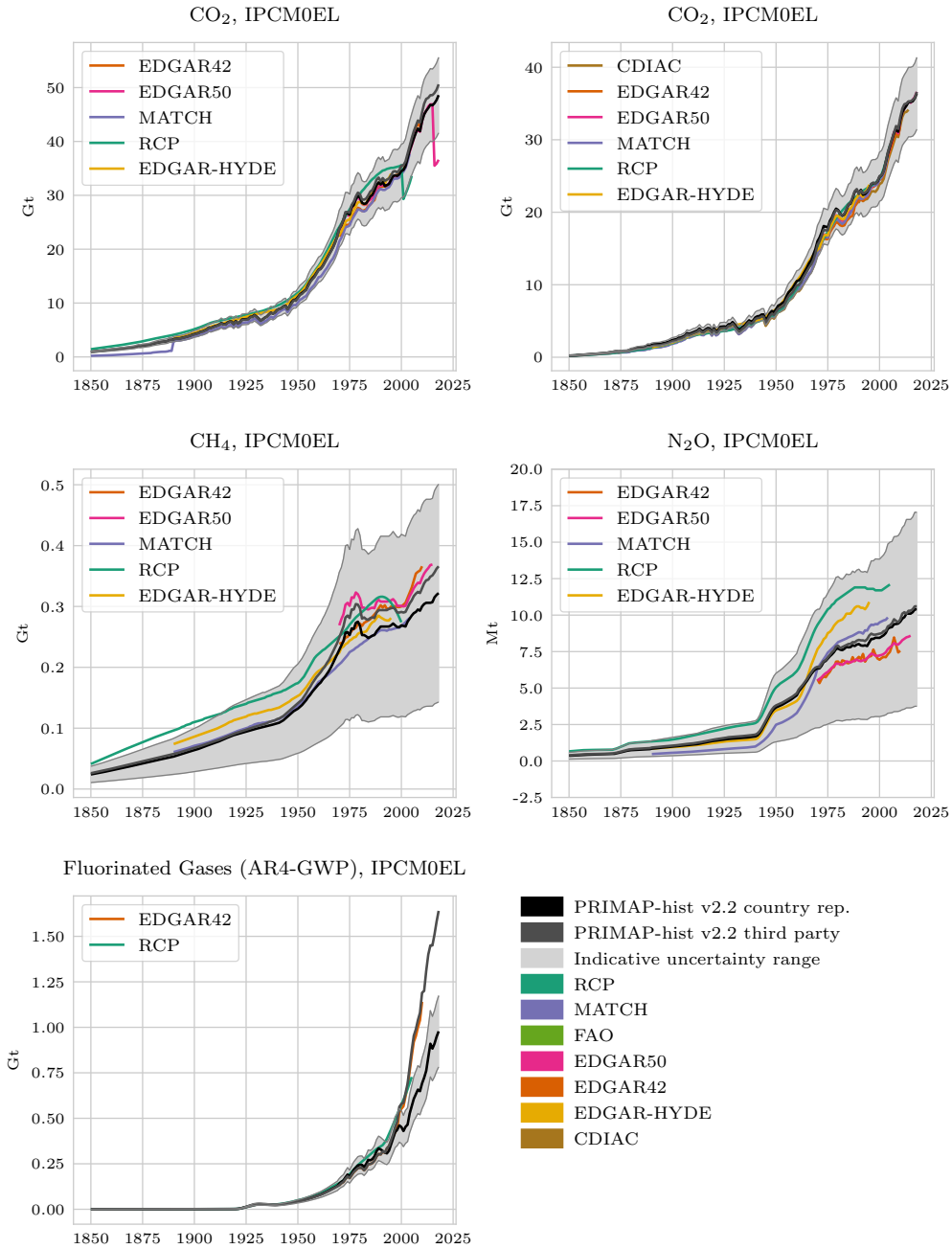


Figure 6: Comparison of the PRIMAP-hist dataset with both individual sources and composite datasets for different gases. Grey shaded areas show the indicative uncertainty range from Table 10 of ? converted to IPCC2006 categories and applied to the PRIMAP-hist country reported priority dataset. Where different uncertainty estimates exist the average value is used. International shipping and aviation emissions are not included.