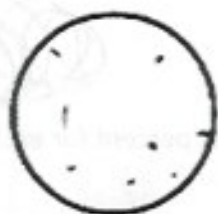


METHODS

1. Plants should be sampled during peak flowering of the majority of species.
2. In each of the ten 1 m² subplots:
 - a. Identify all vascular plant species and estimate their cover to the nearest percent for each species. Species that occupy <1% cover in a subplot are recorded as 0.5%.
 - b. Record the absolute percent cover of bare ground, rock and litter
3. In the 10m² and 100m² sub-plots and 1000m² main plot record the cumulative presence of all vascular plant species.



MODIFIED WHITAKER VEGETATION PLOT DATA			
Date: 7/15		Site Name: 1P	
GPS (UTMs) of Plot Location		Plot Number and Size: 1, 1.5x2m	
Surveyors: DM, ECC			
ENVIRONMENTAL DATA	Aspect: N	Gradient:	Elevation:
Plant Species/Bare Ground/Rock/Litter			Absolute Cover (%)
Bare Ground			10
Rock			7
Litter			50% 50%
<i>Salix arctica</i>			7-10%
<i>Geum rossii</i>			10%
<i>Trifolium peruvianum</i>			5%
<i>Carex chalcidolepis</i>			1%
<i>Saxifraga rhomboides</i>			1%
<i>Castilleja occidentalis</i>			trace
<i>Artemisia scopularum</i>			1%
<i>Erigeron simplex</i>			trace
<i>Dorhamia caespitosa</i>			trace
Alpine Chickweed			trace
<i>Polygonum bistortoides</i>			trace
<i>Cabresia myosuroides</i> (supertrif)			trace
<i>Carex tobi</i> droopy head sedge			3%
<i>Potentilla rubicollis</i>			trace
<i>Poa alpina</i>			2%
<i>Trisetum spicatum</i>			trace
Lichen/crypto cover			1%
↳ (not on rocks)			



1%



2%



3%



5%



7%



10%



15%



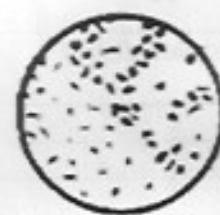
20%



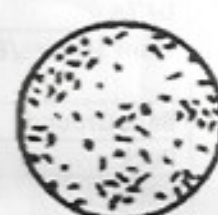
25%



30%



40%



50%

