



New and noteworthy Hypnales (Bryophyta) records from the Nuluhon Trusmadi Forest Reserve in Borneo

Andi Maryani A. Mustapeng¹, Monica Suleiman²

1 Forest Research Centre, Sabah Forestry Department, PO Box 1407, 90715 Sandakan, Sabah, Malaysia. **2** Institute for Tropical Biology and Conservation, Universiti Malaysia Sabah, Jalan UMS, 88400 Kota Kinabalu, Sabah, Malaysia.

Corresponding author: Monica Suleiman, monicas@ums.edu.my

Abstract

Four Hypnales mosses from three pleurocarpous families are recorded in Borneo for the first time. They are *Neonoguchia auriculata* (Copp. ex Thér.) S.H. Lin (Meteoriaceae), *Oxyrrhynchium bergmaniae* (E.B. Bartram) Huttunen & Ignatov (Brachytheciaceae), *Thamnobryum latifolium* (Bosch & Sande Lac.) Nieuwl. (Neckeraceae), and *Trachycladella sparsa* (Mitt.) M. Menzel (Meteoriaceae). The specimens were collected from Nuluhon Trusmadi Forest Reserve in Sabah, Malaysian Borneo. Descriptions and illustrations of the four species as well as notes on their distribution and distinguishing characteristics are provided.

Keywords

Malaysian Borneo, moss, Mount Trus Madi, Sabah

Academic editor: Navendu Page | Received 17 April 2020 | Accepted 8 November 2020 | Published 9 December 2020

Citation: Andi MAM, Suleiman M (2020) New and noteworthy Hypnales (Bryophyta) records from the Nuluhon Trusmadi Forest Reserve in Borneo. Check List 16 (6): 1663–1671. <https://doi.org/10.15560/16.6.1663>

Introduction

The order Hypnales contains about 4,200 species, which represents one-third of all known moss species (Goffinet et al. 2009). Many species of this order do not show specificity with respect to their substrates and habitats. So far, 25 families, 102 genera, and more than 200 species of Hypnales have been recorded in Borneo (Suleiman et al. 2006). However, a relatively large area in Borneo is yet to be explored extensively by bryologists, and an increase in field surveys will likely result in newly recorded species. An example in Borneo of such an unexplored area is the Nuluhon Trusmadi Forest Reserve (NTFR). The NTFR is located in the central part of Sabah, between latitude 05°17'16"–05°47'60"N and between longitude 116°20'04"–116°38'14"E (Fig. 1). The nearest towns are Tambunan and Keningau, about 40 km west and 70 km southwest from the reserve's center, respectively.

The topography of the NTFR comprises mainly mountainous landscapes at the northern part and hilly landscapes towards the southern part (Sabah Forestry Department 2014). The highest peak of the NTFR is Mount Trus Madi (2,642 m a.s.l.), which is the second tallest mountain in Borneo after Mount Kinabalu.

Natural vegetation found in the NTFR comprises of upper montane forest (2,000–2,500 m a.s.l.), occupying an area of 2,219.66 ha; lower montane forest (1,500–2,000 m a.s.l.), which is the dominant forest type in the NTFR (41,970.98 ha); upland hill dipterocarp forest (600–1,499 m a.s.l.), covering an area of 32,127.40 ha; the summit scrub including the peak of Mount Trus Madi, occupying an area of 29.90 ha; and a small fragment of mixed lowland dipterocarp forest (up to 599 m a.s.l.) of about 637.62 ha, located adjacent to the border of the forest reserve.

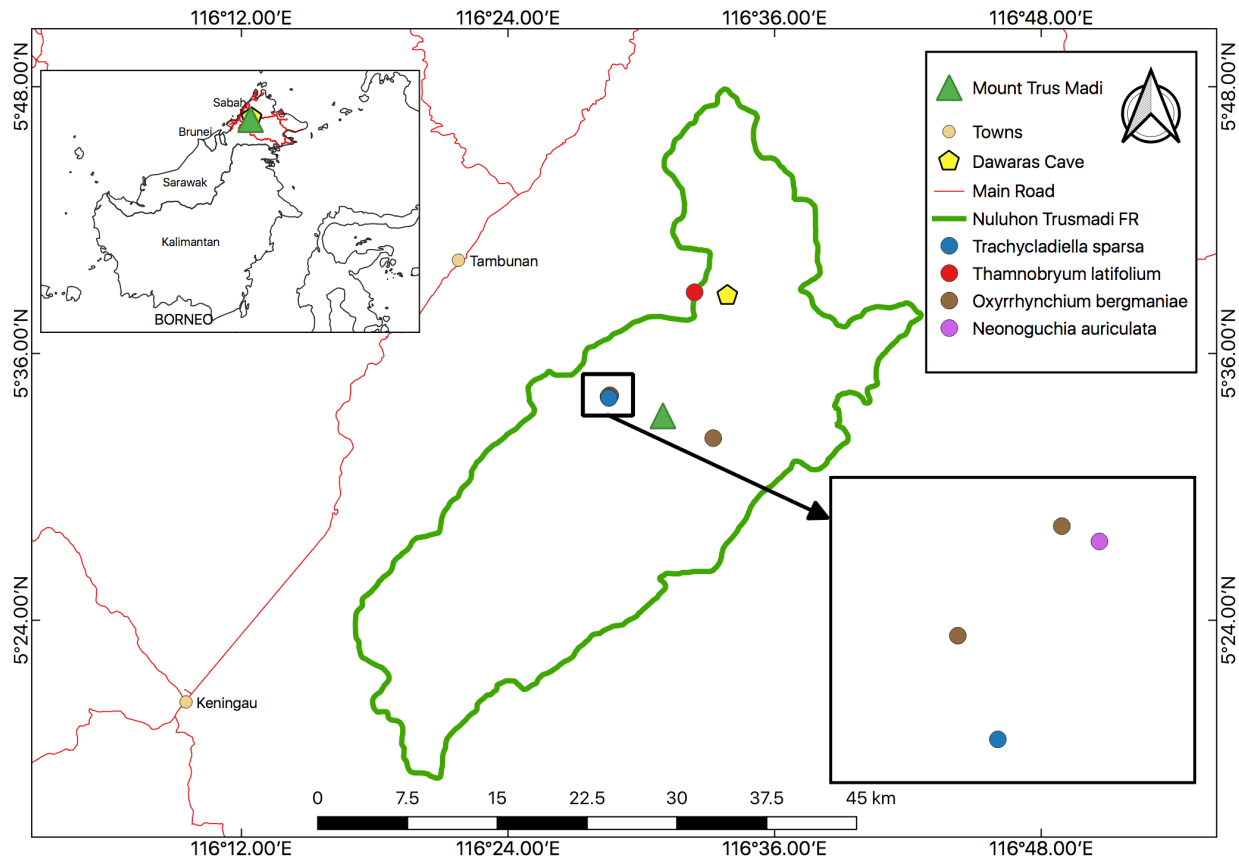


Figure 1. Map of Nuluhon Trusmadi Forest Reserve showing the collection sites of four new records of mosses from Borneo (insert: map of Borneo).

Here we report four newly recorded species of Hypnales mosses for Borneo collected from the NTFR.

Methods

Botanical surveys were carried out along the trails of Wayaan Mannan and Wayaan Kaingaran to the summit of Mount Trus Madi in the NTFR. This was done as part of an effort to study the moss flora on the reserve. All substrata of mosses were searched carefully during sampling, especially the four main substrata, namely tree trunks, soil, rocks, and logs. When possible, areas within 5 m on each side of the trails were explored. Specimens were collected from 600 m to 2,642 m above sea level. The collecting method used was adapted from O'Shea (1989). Voucher specimens were deposited in Sandakan Herbarium of Sabah Forestry Department (SAN) and duplicates were sent to BORNEENSIS Herbarium of Universiti Malaysia Sabah (BORH).

Previous collections deposited in BORH and SAN were also examined, including that of Sir Gary A. Shea in 1971, and a few collections of mosses by researchers from Sabah Forestry Department in 1995. The largest collection was contributed by Monica Suleiman in 1996, 2001, 2002, and 2008. Most of her collections were from Wayaan Kaingaran.

The identification of these samples was done using relevant literature (Bartram 1939; Noguchi 1976;

Gangulee 1980; Tan and Noguchi 1984; Ignatov et al. 1999; Tan and Jia 1999; Akiyama et al. 2001). Nomenclature of mosses follows Goffinet et al. (2009) and Goffinet and Buck (2010) with some modification, while genera and species were arranged in alphabetical order. The status of new records for Borneo was evaluated using relevant literature (Suleiman and Edward 2002; Suleiman et al. 2003, 2006, 2009, 2011a, 2011b, 2017a, 2017b; Suleiman and Akiyama 2004, 2007; Andi and Suleiman 2005; Higuchi et al. 2008; Muller and Pursell 2009; Ellis et al. 2010, 2016a, 2016b; Mohamed et al. 2010; Tan and Mohamed 2013; Sugau and Andi 2014; Andi et al. 2015; Chua and Suleiman 2015; Suleiman and Jotan 2015; Suleiman and Rimi 2016; Suleiman and Andi 2019). Photographs of diagnostic characters of the new records were taken using Olympus Digital Camera DP72 at the Phytochemistry Laboratory of Forest Research Centre (FRC), Sabah Forestry Department, Malaysia.

The global geographical distributions of these new records were reviewed based on relevant references (e.g. Pant and Tewari 1984; Redfearn and Wu 1986; Lin 1988; Tan and Buck 1989; Tan and Iwatsuki 1991; Tan and Jia 1999; Telenius 2016; MNHN 2020; Ramirez et al. 2020) as well as online databases (GBIF 2020; Tropicos 2020). The distributions of these new records were mapped by using <https://mapchart.net/world.html> and Microsoft Photo Editor.

Results

Four newly recorded species of mosses from three pleurocarpous families of the order Hypnales are added to the moss flora of Borneo. The descriptions and illustrations of the four species, identification and notes on their global distributions are provided below.

***Neonoguchia auriculata* (Copp. ex Thér.) S.H. Lin.**
(Meteoriaceae)

Figure 2

New record. BORNEO • Sabah, Tambunan District, Nuluhon Trusmadi Forest Reserve, Wayaan Kaingaran, 05°34'07" N, 116°28'36"E, alt. 1390 m, on tree bark, 27 Sep. 1996, M. Suleiman 264c (SAN, BORH).

Identification. Plants rigid, yellowish-green to brown. Secondary stems elongate, ca 15 cm long, with leaves ca 4 mm wide, laxly branched. Branches widely spreading, simple and complanately leaved, obtuse. Stem leaves erect spreading when dry, 3.5–4.0 mm × 0.8–1.5 mm, ovate-oblong, long acuminate and flexuose, plicate, at basal corner largely auriculate, the acumen subpiliferous; costa very slender, reaching 2/3 the leaf-length; margin erect, often undulate below. Median lamina cells linear-hexagonal, with acute ends, 45–60 μm × 6.0–8.5 μm, unipapillose, thin-walled; mid-basal cells thickened and subporose. Branch leaves smaller than the

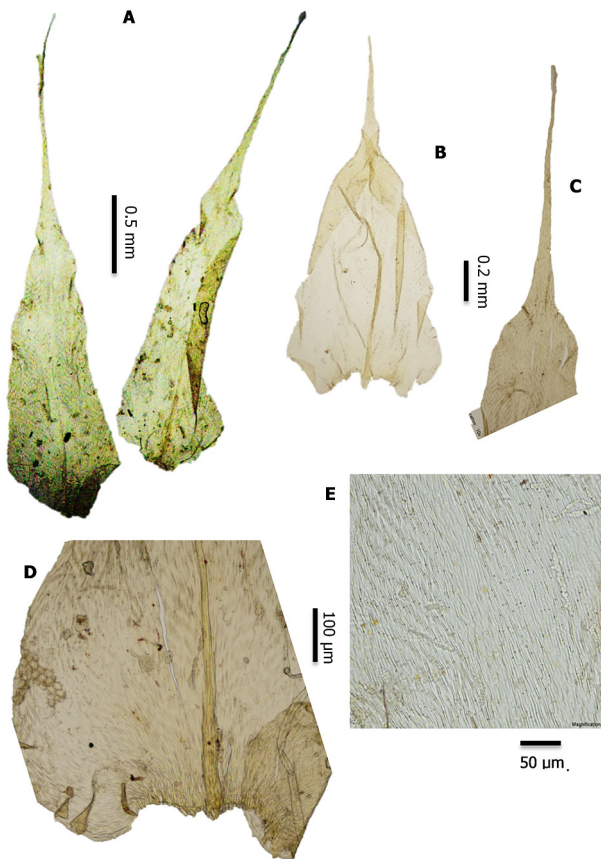


Figure 2. *Neonoguchia auriculata*. **A.** Stem leaves (SL). **B.** Branch leaf (BL). **C.** SL apex. **D.** SL auriculate base. **E.** Lamina cells. All based on M. Suleiman 264(c).

stem leaves, much broader, 2.5 mm × 1.0 mm. Sporophyte not seen.

***Oxyrrhynchium bergmaniae* (E.B. Bartram)**
Huttunen & Ignatov (Brachytheciaceae)

Figure 3

New records. BORNEO • Sabah, Tambunan District, Nuluhon Trusmadi Forest Reserve, Wayaan Kaingaran, 05°34'03"N, 116°28'31"E, alt. 1370 m, on fallen branch by a stream, in partially shaded area, 25 Oct. 2001, M. Suleiman 675; 05°34'07"N, 116°28'35"E, alt. 1350 m, on treelet trunk, along old logging roads, in partially shaded area, 30 Apr. 2008, M. Suleiman 2732; Keningau District, about 6 km from Kg. Sinua, Wayaan Mannan, 05°32'11"N, 116°33'14"E, alt. 1372 m, on a large boulder on the bank of a mountain stream, 5 Nov. 1971, GA Shea 2196.

Identification. Plants yellowish-green to golden-yellow, pendulous, remotely pinnate, up to 9 cm, moderately densely foliate, usually subjulaceous, rarely imperfectly complanate. Leaves erecto-patent to patent when dry, spreading when moist, broadly ovate, 1.5–2.0 mm × 0.9–1.2 mm, apex sharply acuminate, costa stout, ending 1/5 below apex, margin sharply dentate. Lamina cells linear, 66–78 μm × 5–7 μm, prorate, thin-walled. Sporophyte not seen.

***Thamnobryum latifolium* (Bosch & Sande Lac.)**
Nieuwl. (Neckeraceae)

Figure 4

New record. BORNEO • Sabah, Tambunan District, Nuluhon Trusmadi Forest Reserve, Dawaras cave, 05°38'44" N, 116°32'24" E, alt. 1490 m, on limestones by a stream, in open to partially shaded areas, 29 Mar. 2002,

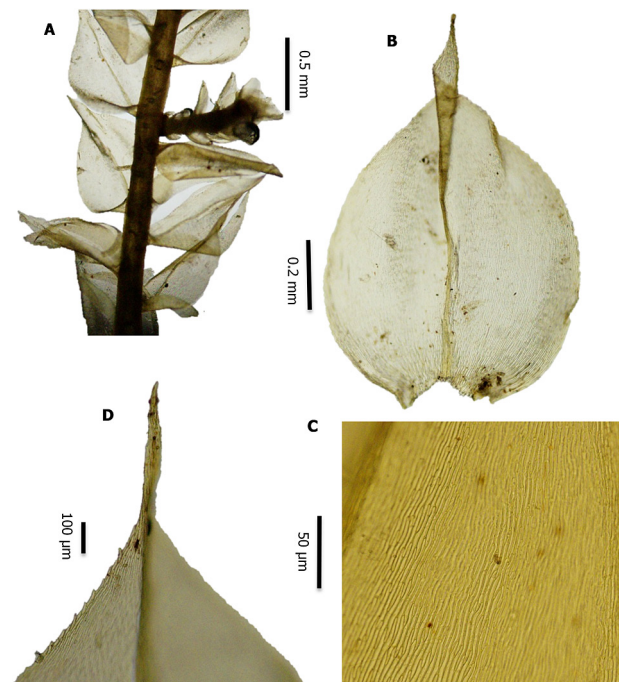


Figure 3. *Oxyrrhynchium bergmaniae*. **A.** Plant. **B.** Leaves. **C.** Lamina cells. **D.** Leaf apex. All based on M. Suleiman 2732.

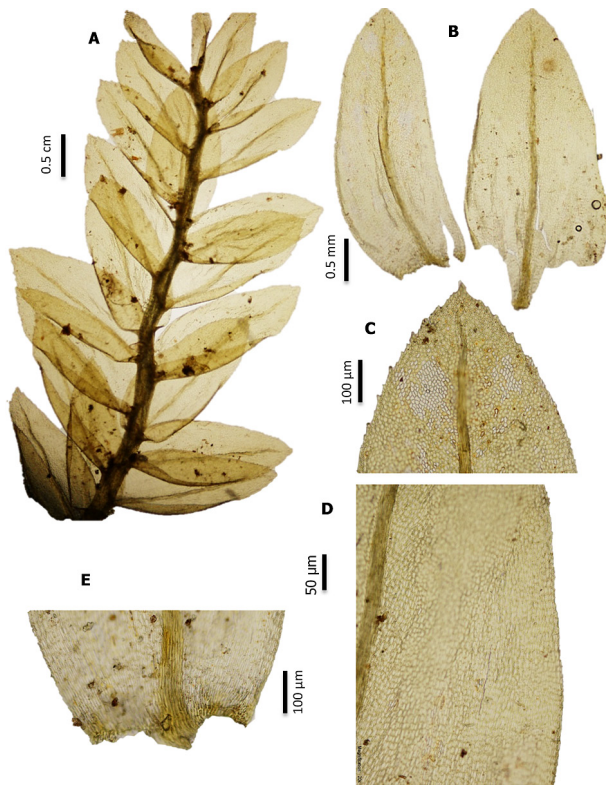


Figure 4. *Thamnobryum latifolium*. **A.** Plant. **B.** Leaves. **C.** Leaf apex. **D.** Lamina cells. **E.** Leaf base. All based on M. Suleiman 768 and 777.

M. Suleiman 768; M. Suleiman 777 (SAN, BORH).

Identification. Plants robust, dull green, dendroid in habit; secondary stems erect, 6–8 cm high, simple and woody below, irregularly bipinnate above; branches flat, widely spreading, tapering at tips. Stipe leaves small, distant, laxly spreading, gradually larger upward. Stem leaves erect-spreading, biplicate when dry, broadly ovate, abruptly contracted to a short, acute point, 2.3–2.8 mm × 1.1–1.5 mm, broadly inflexed on one side below, coarsely and irregularly serrate toward apex; costa stout, ending just below apex, with a few spines on the back. Lamina cells oval-hexagonal, 20.4 µm × 7.4 µm, smooth, marginal cells smaller at midleaf, gradually becoming linear towards base, porose. Sporophyte not seen.

***Trachycladiella sparsa* (Mitt.) M. Menzel**
(Meteoriaceae)

Figure 5

New record. BORNEO: Sabah, Tambunan District, Nuluhon Trusmadi Forest Reserve, Wayaan Kaingaran, 05°34'00"N, 116°28'34"E, alt. 1341 m, on tree trunks along road side, in open area, 28 Oct. 2001, M. Suleiman 702 (SAN, BORH).

Identification. Plants yellowish-green, stem rather loosely leaved, terete. Stem leaves slightly complanate, broadly ovate-oblong, rapidly contracted to a piliferous apex, 0.5–0.6 mm × 0.2 mm, the basal angles slightly decurrent; margin undulate, crenulate or serrulate throughout; costa slender, reaching mid-leaf, smooth, pellucid. Lamina cells obscure, walls thick, papillose on lateral walls, 30–40 µm × 4–5 µm, marginal cells papillose.

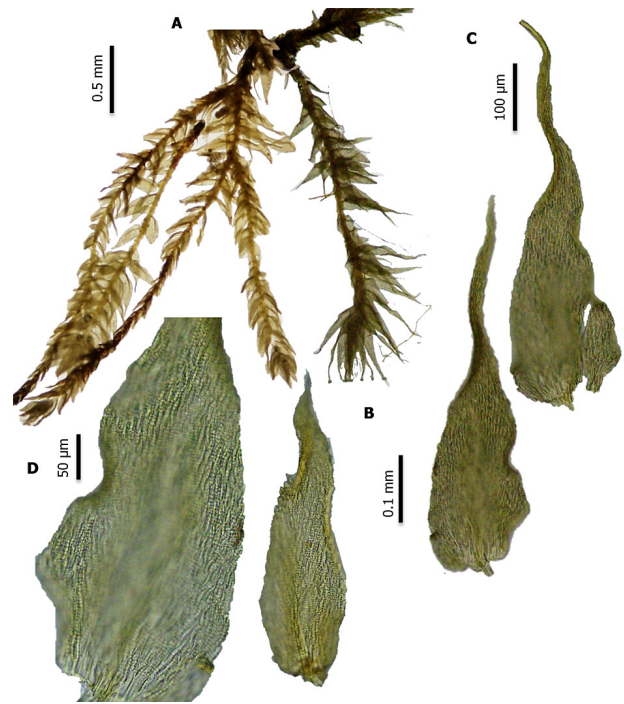


Figure 5. *Trachycladiella sparsa*. **A.** Plant branches. **B.** Leaves. **C.** Leaf apex, extreme tip broken. **D.** Leaf cells. All based on M. Suleiman 702.

Branch leaves terete, smaller than stem leaves, 0.3 mm × 0.1 mm. Sporophyte not seen.

Discussion

Borneo is a huge island and only a small fraction of its land mass has been bryologically explored. Thus, the probability of finding newly recorded as well as undescribed species of bryophytes is still high (Akiyama and Suleiman 2015; Andi et al. 2015; Chua and Suleiman 2015; Ellis et al. 2015, 2016a, 2016b, 2018, 2019; Zhu et al. 2017; Suleiman and Andi 2019; Suleiman et al. 2019). With the four new additions of pleurocarpous mosses, Borneo now has 773 species and infraspecific taxa of mosses.

Among the four newly recorded species of mosses reported here, *Neonoguchia auriculata* is the rarest species in Borneo with only a single collection known. It was found intermingled with two other species of mosses, *Actinodontium raphidostegum* (Müll.Hal.) Bosch & Sande Lac. (Pilothricaceae) and *Meiothecium jagorii* (Müll.Hal.) Broth. (Sematophyllaceae). Noguchi (1976) questioned the placement of this species in the genus *Aerobryopsis* due to its large auriculate leaf base and thickened cell walls of the leaves, and Lin (1998) later classified it as *Neonoguchia auriculata*. The phylogenetic affinities of *Neonoguchia* are still uncertain, but it is closely related to *Meteoriopsis* (Huttunen and Quandt 2007). *Neonoguchia auriculata* cannot be mistaken for *Meteoriopsis reclinata* (Müll. Hal.) M. Fleisch., which is the only species of *Meteoriopsis* in Borneo (Menzel 1992), on account of its strongly recurved and squarrose

branch leaves. *Neonoguchia auriculata* is a monotypic species and this is the first record of this species from the Malesian region. This species was previously known only in China and Taiwan, south to Myanmar and Bhutan (Fig. 6).

Oxyrrhynchium bergmaniae is similar to the more widespread *O. vagans* (A. Jaeger) Ignatov & Huttunen due to their broadly ovate leaves with sharply acuminate

apex and sharply dentate margin. However, *O. bergmaniae* is much larger and golden-yellow. *Oxyrrhynchium bergmaniae* was previously thought to be endemic to Papua-New Guinea (Bartram 1960; Ignatov et al. 1999; Tan 2000) (Fig. 7), and Borneo is now the second locality of this species in the world. This species is fairly common in the NTRF and was found on various habitats in secondary forests and along old logging roads.



Figure 6. Global distribution map of *Neonoguchia auriculata* (yellow star = new record, red pentagon = previous records). The size of the pentagon is solely for descriptive purposes.



Figure 7. Global distribution map of *Oxyrrhynchium bergmaniae* (yellow star = new record, red pentagon = previous records). The size of the pentagon is solely for descriptive purposes.

The specimen of *Thamnobryum latifolium* was found at a limestone cave in a very remote lowland area of the NTFR. Limestone habitats harbor many interesting species of bryophytes and should be given emphasis by bryologists. The coarsely and irregularly toothed leaf apex, separate this species from the four other *Thamnobryum* species recorded in Borneo (Suleiman et al. 2017a). It is also characterized by its complanate stems and branches and short or isodiametric upper leaf cells. This species is distributed in Australia, China, India, Java, Maluku, Nepal, New Caledonia, New Zealand, the Philippines, Sumatra, and Taiwan (Fig. 8). Thus, its presence in Borneo was predicted.

There are only two known species of *Trachycladiella*, namely *T. aurea* and *T. sparsa*. These species have obscure lamina cells and the papillae are densely arranged on the longitudinal walls, which distinguishes them from *Floribundaria* species. *Floribundaria* can be distinguished from *T. aurea* by its large, sharp marginal teeth and by having all marginal cells papillose. The specimen from NTFR is quite small but all other characters are conform to the species (Noguchi 1976; Redfearn and Wu 1986; Tan and Iwatsuki 1991). *Trachycladiella sparsa* was previously recorded from Bhutan, China, Myanmar, Nepal, the Philippines, and Thailand (Fig. 9). Its occurrence in Borneo is evidence of its disjunct distribution from the Himalayas and northern Indochina.

Acknowledgements

We thank the Sabah Forestry Department (SFD) and the Universiti Malaysia Sabah for financial support of our

research. We are grateful for the support of Mr John Sugau, the curator of SAN, Dr Noreen Majalap (Head of Chemistry Section), District Forest Officer (DFO) Tambunan, DFO Keningau, DFO Sook, Hj. Anuar Mohammad (Biodiversity head for MPCT FMU-10), and the kind assistance of Forest Research Centre of the SFD and the Institute for Tropical Biology and Conservation (ITBC) staff during field surveys. We appreciate the technical assistance from Azrie Alliamat, GIS Laboratory, ITBC. We are also grateful to Noah Charles Mosios for the linguistic revision of the text.

Authors' Contributions

The authors equally contributed to this article. The authors have declared that no competing interests exist.

References

- Akiyama H, Suleiman M (2015) A new species, *Bryobrothera tambyukonensis* (Daltoniaceae, Bryopsida), from Sabah, Borneo Island. *Phytotaxa* 192: 13–23. <https://doi.org/10.11646/phytotaxa.192.1.2>
- Akiyama H, Yamaguchi T, Suleiman M (2001) The bryophyte flora of Kinabalu National Park (Sabah, Malaysia), based on collections by Japan-Malaysia collaborative expeditions in 1997. *Nature and Human Activities Hyogo* 6: 83–99.
- Andi MAM, Suleiman M (2005) Preliminary list of mosses from Meliau Range, Ulu Tungud Forest Reserve, Sabah. *Sepilok Bulletin* 3: 57–64.
- Andi MAM, Anuar M, Suleiman M (2015) Mosses of Sinua at eastern part of Trusmadi Forest Reserve, Sabah, Malaysia. *Sepilok Bulletin* 21–22: 27–48.



Figure 8. Global distribution map of *Thamnobryum latifolium* (yellow star = new record, red pentagon = previous records). The size of the pentagon is solely for descriptive purposes.

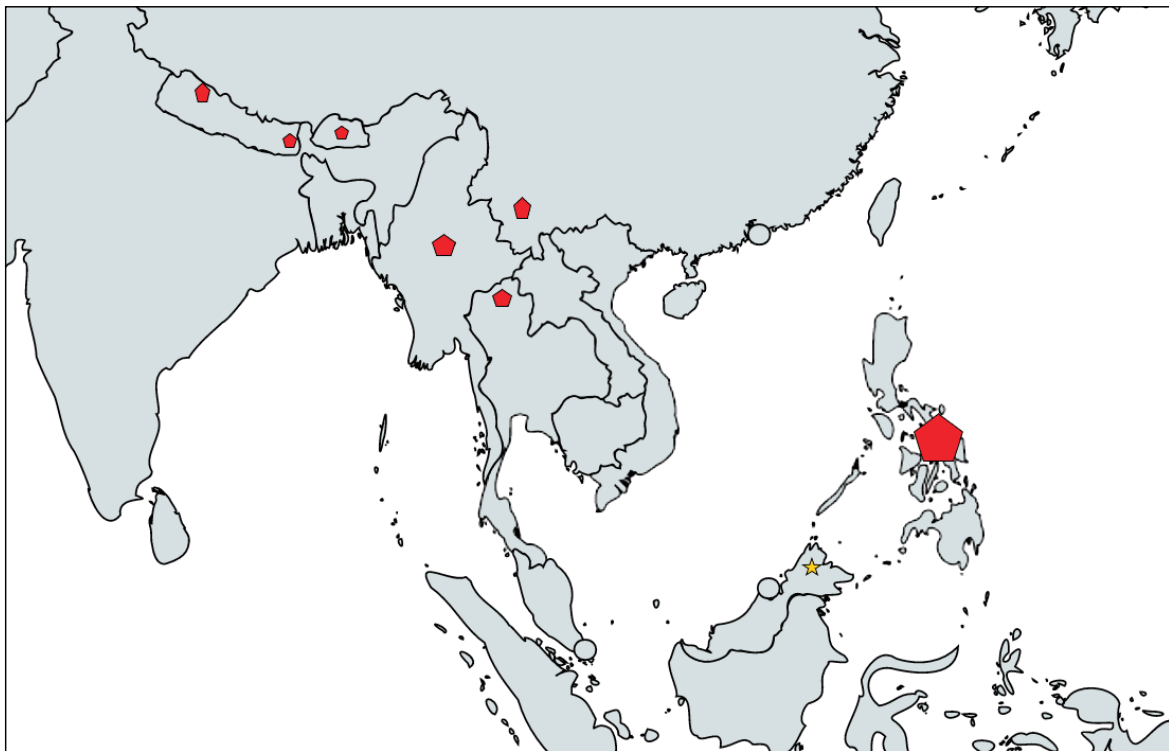


Figure 9. Global distribution map of *Trachycladiella sparsa* (yellow star = new record, red pentagon = previous records). The size of the pentagon is solely for descriptive purposes.

- Bartram EB (1939) Mosses of Philippines. The Philippine Journal of Science 68 (1–4): 1–437.
- Bartram EB (1960) Additions to the moss flora of Netherlands New Guinea. Svensk Botanisk Tidskrift 54 (3): 483–487.
- Chua M-S, Suleiman M (2015) Additions to the moss flora of Imbak Canyon Conservation Area, Malaysian Borneo. Bryophyte Diversity and Evolution 37 (2): 23–30. <https://doi.org/10.11646/bde.37.2.1>
- Ellis LT, Asthana AK, Sahu V, Bednarek-Ochyra BH, Ochyra R, Cano MJ, Costa DP, Cykowska B, Philippov DA, Dulin MV, Erzberger P, Lebouvier M, Mohamed H, Ochyra R, Orgaz JD, Phephu N, Rooy J van, Stebel A, Suárez GM, Schiavone MM, Townsend CC, Vána J, Vončina G, Yayintaş ÖT, Yong KT, Zander RH (2010) New national and regional bryophyte records, 25. Journal of Bryology 32 (4): 311–322. <https://doi.org/10.1179/jbr.2010.32.4.311>
- Ellis LT, Aleffi M, Bakalin VA, Bednarek-Ochyra H, Bergamini A, Beveridge P, Choi SS, Fedosov VE, Gabriel R, Gallego MT, Grdović S, Gupta R, Nath V, Asthana AK, Jennings L, Kürschner H, Lebouvier M, Nair MC, Manjula KM, Rajesh KP, Nobis M, Nowak A, Park SJ, Sun B-Y, Plášek V, Číhal L, Poponessi S, Mariotti MG, Sabovljević A, Sabovljević MS, Sawicki J, Schnyder N, Schumacker R, Sim-Sim M, Singh DK, Singh D, Majumdar S, Singh Deo SS, Ștefănuț S, Suleiman M, Seng CM, Chua MS, Vána J, Venanzoni R, Bricchi E, Wigginton MJ (2015) New national and regional bryophyte records, 42. Journal of Bryology 37 (1): 68–85. <https://doi.org/10.1179/1743282014Y.0000000132>
- Ellis LT, Asthana AK, Srivastava P, Omar I, Rawat KK, Sahu V, Cano MJ, Costa DP, Dias EM, Dias dos Santos N, Silva JB, Fedosov VE, Kozhin MN, Ignatova EA, Germano SR, Golovina EO, Gremmen NJM, Ion R, Ștefănuț S, von Konrat M, Jimenez MS, Suárez GM, Kiebacher T, Lebouvier M, Long DG, Maity D, Ochyra R, Parnikoza I, Plášek V, Fialová L, Skoupá Z, Poponessi S, Aleffi M, Sabovljević MS, Sabovljević AD, Saha P, Aziz MN, Sawicki J, Suleiman M, Sun B-Y, Vána J, Wójcik T, Yoon Y-J, Żarnowiec J, Larrain J (2016a) New national and regional bryophyte records, 46. Journal of Bryology 38 (1): 47–63. <https://doi.org/10.1080/03736687.2015.1123344>
- Ellis LT, Agcagil E, Kırmacı M, Aleffi M, Bakalin VA, Bednarek-Ochyra H, Cykowska-Marzencka B, Stryjak-Bogacka M, Bojaca GFP, Fantacelle LB, Araújo CAT, Maciel-Silva AS, Bruno Silva J, Calleja JA, Cano MJ, Castillo Diaz J, Gabriel R, Dias dos Santos N, Enroth J, Erzberger P, Garilleti R, Hájek M, Hedenäs L, Heras P, Infante M, Kiebacher T, Koczur A, Krawczyk R, Kučera J, Lebouvier M, Lüth M, Mazimpaka V, Vigalondo B, Lara F, Nagy J, Németh Cs, Kovács A, Nobis M, Węgrzyn M, Wietrzyk P, Norhazrina N, Vanderpoorten A, Nowak A, Poponessi S, Gigante D, Venanzoni R, Plášek V, Rangel Germano S, Schäfer-Verwimp A, Sérgio C, Claro D, Garcia CA, Shirzadian S, Akhondidarzikolaei A, Stebel S, Suleiman M, Yong K-T, Virchenko VM, Vončina G, Yoon Y-J, Choi H-G, Kim JH (2016b) New National and Regional Bryophyte Records, 49. Journal of Bryology 38 (4): 327–347. <https://doi.org/10.1080/03736687.2016.1225777>
- Ellis LT, Afonina OM, Andriamiarisoa RL, Asthana G, Bharti R, Aymerich P, Bambe B, Boiko M, Brugués M, Ruiz E, Sáez L, Cano MJ, Ros R, Číhal L, Deme J, Csiky J, Dihoru G, Dřevojan P, Ezer T, Fedosov VE, Ignatova EA, Seregin AP, Garcia CA, Martins A, Sérgio C, Sim-Sim M, Rodrigues ASB, Gradstein SR, Reeb C, Irmah A, Suleiman M, Koponen T, Kučera J, Lebouvier M, LiQun Y, Long DG, Maksimov AI, Maksimova TA, Muñoz J, Nobis M, Nowak A, Ochyra R, O’Leary SV, Osorio F, Pisarenko OY, Plášek V, Skoupá Z, Schäfer-Verwimp A, Schnyder N, Shevock JR, Ștefănuț S, Sulayman M, Sun B-Y, Park SJ, Tubanova DY, Váná J, Wolski GJ, Yao K-Y, Yoon Y-J, Yücel E (2018) New national and regional bryophyte records, 56. Journal of Bryology 40 (3): 271–296. <https://doi.org/10.1080/03736687.2018.1487687>
- Ellis LT, Afonina OM, Czernyadjeva IV, Ivchenko TG, Kholod SS, Kotkova VM, Kuzmina EY, Potemkin AD, Sergeeva YM, Asthana AK, Gupta D, Sahu V, Srivastava S, Bakalin VA, Bednarek-Ochyra H, Campisi P, Dia MG, Choi SS, Dagnino D, Minuto L, Turcato C, Drapela P, Dugarova OD, Tubanova DY, Enroth J, Koponen T, Klama H, Erdağ A, Kırmacı M, Fedosov VE, Hodgetts NG, Holyoak DT, Jukonienė I, Konstantinova NA, Savchenko AN, Vilnet AA, Krival EA, Kürschner H, Lapshina ED, Larrain J, Ma WZ, Maksimov AI, Marino ML, Müller F, Pande N, Park

- SJ, Sun B-Y, Pivoras A, Plášek V, Puglisi M, Sciandrello S, Rajian NJ, Suleiman M, Schäfer-Verwimp A, Shevock JR, Spitale D, Stebel A, Taha MA, Porley RD (2019) New national and regional bryophyte records, 61. *Journal of Bryology* 41 (4): 364–384. <https://doi.org/10.1080/03736687.2019.1673601>
- Gangulee HC (1980) Mosses of eastern India and adjacent regions. A monograph: Hypnobryales (Hypninae). Fascicle 8. Privately published, Calcutta, 1753–2145.
- GBIF: The Global Biodiversity Information Facility (2020) What is GBIF? <https://www.gbif.org/what-is-gbif>. Accessed on: 2020-01-13.
- Goffinet B, Buck WR, Shaw AJ (2009) Morphology and classification of the Bryophyta. In: Goffinet B, Shaw AJ (Eds) *Bryophyte Biology*. 2nd edition. Cambridge University Press, Cambridge, 55–138.
- Goffinet B, Buck WR (2010) Classification of the Bryophyta. On-line version. <http://bryology.uconn.edu/classification>. Accessed on: 2019-04-13.
- Higuchi M, Arikawa T, Suleiman M (2008) Mosses of Mt. Kinabalu, Borneo, Malaysia. *Memoirs of the National Science Museum National Science, Tokyo* 45: 93–104.
- Huttunen S, Quandt D (2007) Phylogenetic relationships within the moss family Meteoriaceae in the light of different datasets, alignment and analysis methods. In: Newton AE, Tangney RS (Eds) *Pleurocarpous mosses: systematics and evolution*. CRC Press, Cleveland, 141–159.
- Ignatov MS, Koponen T, Norris DH (1999) Bryophyte flora of the Huon Peninsula, Papua New Guinea. LXII. Brachytheciaceae (Musci), excluding *Homalothecium* and *Palamocladium*. *Acta Botanica Fennica* 165: 23–72.
- Lin S-H (1988) List of mosses of Taiwan. *Yushania* 5 (4): 1–39.
- Menzel M (1992) The bryophytes of Sabah (North Borneo) with special reference to the BRYOTROP transect of Mount Kinabalu. XVII. Meteoriaceae (Leucodontales, Bryopsida). *Willdenowia* 22 (1–2): 171–196.
- MNHN, Chagnoux S (2020) The cryptogamy collection (PC) at the Herbarium of the Muséum national d'Histoire Naturelle (MNHN - Paris). Version 70.145. Occurrence dataset. <https://doi.org/10.15468/mywiem>. Accessed via GBIF.org on: 2020-01-30.
- Mohamed H, Yong KT, Damanhuri A (2010) Mosses of north-western Maliau Basin with notes on the phytogeographical affinities. In: Komoo I, Othman M, Ikram MS, Latiff A (Eds) *Maliau Basin: physical environment and biological diversity of the northern rim*. Akademi Sains Malaysia and Yayasan Sabah, Kuala Lumpur, 135–156.
- Müller F, Pursell RA (2009) New bryophyte taxa records for tropical countries 8. *Tropical Bryology* 30: 43–44. <https://doi.org/10.11646/bde.30.1.7>
- Noguchi A (1976) A taxonomic revision of the family Meteoriaceae of Asia. *Journal of the Hattori Botanical Laboratory* 41: 231–357.
- O'Shea BJ (1989) A guide to collecting bryophytes in the tropics. *British Bryological Society Special Volume No. 3*. British Bryological Society, Cardiff, 30 pp.
- Pant GB, Tewari SD (1984) *Distichophyllum schmidtii* Broth. and *Thamnobryum latifolium* (Bosch & LC.) Nieuwl., new records for India. *Indian Journal of Forestry* 7: 159–160.
- Ramirez J, Tulig M, Watson K, Thiers B (2020) The New York Botanical Garden Herbarium (NY). Version 1.17. The New York Botanical Garden. Occurrence dataset. <https://doi.org/10.15468/6e8nje>. Accessed via GBIF.org on: 2020-01-30.
- Redfearn PL Jr., Wu P-C (1986) Catalog of the mosses of China. *Annals of the Missouri Botanical Garden* 73: 177–208. <https://doi.org/10.2307/2399149>
- Sabah Forestry Department (2014) Environmental impact assessment (EIA) for conservation management of Forest Management Unit 10 (Tambunan) Trusmadi Forest Reserve (Class I) and Sungai Kiluyu Forest Reserve (Class I). Sabah Forestry Department, Sabah, 78 pp.
- Sugau JB, Andi MAM (2014) A floristic study in Trusmadi-Sinua, Keningau, Sabah. *Sepilok Bulletin* 19–20: 61–95.
- Suleiman M, Edward SR (2002) Mosses of Mt. Trus Madi, Sabah, Malaysia. *Tropical Bryology* 21: 57–64. <https://doi.org/10.11646/bde.21.1.9>
- Suleiman M, Akiyama H (2004) A preliminary checklist of the mosses of Crocker Range Park. In: Maryati M, Zulhazman Hamzah, Tachi T, Nais J (Eds) *Crocker Range Park Scientific Expedition 2002*. Universiti Malaysia Sabah, Kota Kinabalu, 1–15.
- Suleiman M, Akiyama H (2007) Checklist of mosses from southern part of Maliau Basin Conservation Area, Sabah, East Malaysia. *Journal of Tropical Biology and Conservation* 3: 67–75.
- Suleiman M, Jotan P (2015) Diversity of epiphytic mosses along an altitudinal gradient at Minduk Sirung Trail in Crocker Range Park, Sabah, Malaysia. *Sepilok Bulletin* 21–22: 49–57.
- Suleiman M, Rimi R (2016) The mosses of Gaya Island with two new records for Borneo. *Sabah Parks Nature Journal* 10: 1–8.
- Suleiman M, Andi MAM (2019) The discovery of a dung-loving moss *Tayloria octoblepharum* (Splachnaceae) on “toilet pitchers” in Borneo. *Malayan Nature Journal* 71 (1): 17–20.
- Suleiman M, Andi MAM, Makladin N (2003) Preliminary list of mosses from Lower Kinabatangan. In: Mohamed M, Takano A, Goossens B, Indran R (Eds) *Lower Kinabatangan scientific expedition 2002*. Universiti Malaysia Sabah, Kota Kinabalu, 73–76.
- Suleiman M, Akiyama H, Tan BC (2006) A revised catalogue of mosses reported from Borneo. *Journal of the Hattori Botanical Laboratory* 99: 107–183.
- Suleiman M, Masundang DP, Tan BC (2009) A checklist of mosses from Golden Hope Oil Palm Plantation and surrounding areas, Tawau, Sabah, East Malaysia. *Journal of Tropical Biology and Conservation* 5 (1): 45–52.
- Suleiman M, Awang-Kanak F, Masundang DP (2011a) The mosses of Mount Lumaku, Sipitang, Sabah, Malaysia. *Tropical Bryology* 33: 23–30. <https://doi.org/10.11646/bde.33.1.5>
- Suleiman M, Chua MS, Awang-Kanak F (2011b) Mosses from the southern part of Imbak Canyon Conservation Area. In: Latiff A, Sinun W (Eds) *Imbak Canyon Conservation Area: geology, biodiversity and socio-economic environment*. Akademi Sains Malaysia and Yayasan Sabah, Kuala Lumpur, 269–282.
- Suleiman M, Masundang DP, Akiyama H (2017a) *Thamnobryum negrosense* (E.B. Bartram) Z. Iwats. & B.C. Tan (Neckeraceae, Musci), a new record for Borneo. *Bryological Research* 11 (8): 229–231.
- Suleiman M, Masundang DP, Akiyama H (2017b) The mosses of Crocker Range Park, Malaysian Borneo. *PhytoKeys* 88: 71–107. <https://doi.org/10.3897/phytokeys.88.14674>
- Suleiman M, Rajian NJ, Irmah A, Andi MAM (2019) The mosses of Sungai Rawog Conservation Area, Segaliud Lokan Forest Reserve, Sabah, Malaysia. In: Sabah Forestry Department & KTS Plantation (Eds) *Proceedings of the seminar on Sungai Rawog Conservation Area Scientific Expedition, 21st February 2019*. Sabah Forestry Department & KTS Plantation Sdn. Bhd., Kota Kinabalu, 67–76.
- Tan BC (2000) Additions to the moss floras of Mt. Wilhelm Nature Reserve and Mt. Gahavisuka Provincial Park, Papua New Guinea. *Journal of the Hattori Botanical Laboratory* 89: 173–196. https://doi.org/10.18968/jhbl.89.0_173
- Tan BC, Noguchi A (1984) A small Philippine moss collection at Hiroshima University. *Hikobia* 9: 43–50.
- Tan BC, Buck WR (1989) A synoptic review of Philippine Sematophyllaceae with emphasis on Clastobryoideae and Heterophylloideae (Musci). *Journal of the Hattori Botanical Laboratory* 66: 307–320.
- Tan BC, Iwatsuki Z (1991) A new annotated Philippine moss checklist. *Harvard Papers in Botany* 3: 1–64.
- Tan BC, Jia Y (1999) A preliminary revision of Chinese Sematophyllaceae. *Journal of the Hattori Botanical Laboratory* 86: 1–70. https://doi.org/10.18968/jhbl.86.0_1

- Tan BC, Mohamed H (2013) A new moss checklist of Negara Brunei Darussalam. *Polish Botanical Journal* 58 (1): 259–266. <https://doi.org/10.2478/pbj-2013-0026>
- Telenius A (2016) Mosses (S). GBIF-Sweden. Occurrence dataset. <https://doi.org/10.15468/yhycl7>. Accessed via GBIF.org on: 2020-01-30.
- Tropicos (2020) Missouri Botanical Garden. <http://www.tropicos.org>. Accessed on: 2020-03-20.
- Zhu R-L, Shu L, Andi MAM, Suleiman M (2017) *Thiersianthus* (Marchantiophyta: Lejeuneaceae), a new genus from lowland rainforests in Borneo. *The Bryologist* 120 (4): 511–520. <https://doi.org/10.1639/0007-2745-120.4.511>