

## A Preliminary List on the Host Plants of Lygaeoidea Species (Hemiptera: Heteroptera) in Turkey- I

Suat KIYAK<sup>1</sup> Meral FENT<sup>2</sup> Ahmet DURSUN<sup>3</sup>

<sup>1</sup>Gazi University, Faculty of Sciences, Department of Biology, 06500, Ankara/Turkey

E-mail: skiyak@gazi.edu.tr ORCID ID: 0000-0001-8167-8283

<sup>2</sup>Trakya University, Faculty of Science, Department of Biology, 22030, Edirne/Turkey.

E-mail: m\_fent@hotmail.com ORCID ID 0000-0001-5787-6714

<sup>3</sup>Amasya University, Faculty of Arts and Science, Department of Biology, 05100, Amasya/Turkey

E-mail: ahmet.dursun@amasya.edu.tr ORCID ID: 0000-0002-5114-7470

**ABSTRACT:** In this preliminary study hostplants relationships of Lygaeoidea species of Turkey are listed, discussed and summarised. The hostplants of Lygaeoidea species are from various floristic elements of Turkey. According to various families of the superfamily Lygaeoidea studies done between the years 1922-2020, a total of 222 plant taxa in 36 families have been identified as hostplants. 77 of these taxa are given at genus level and 145 of them at species level. These hostplants are shrubs, trees, and herbaceous vegetations. In this part of the study, lygaeoid species found on 36 host plant families of Turkey are listed alphabetically. The remaining plant families will be given in the second part of the study. The relationships between these species and the hostplants are discussed in this research review.

**KEYWORDS:** Hemiptera, Lygaeoidea, host plant, relationship, Turkey

**To cite this article:** Kiyak, S., Fent, M., Dursun, A., 2020, A Preliminary List on the Host Plants of Lygaeoidea Species (Hemiptera: Heteroptera) in Turkey- I, *J.Het.Turk.*, 2 (2):114-133

**To link to this article:** <https://www.j-ht.org/wp-content/uploads/2020/11/V22-A5.pdf>

**Received:** Sep 2, 2020; **Revised:** Oct 30, 2020; **Accepted:** Oct 31, 2020; **Published online:** Nov 3, 2020

### INTRODUCTION

At least 708 genera and 4290 species belonging to 17 families of the superfamily Lygaeoidea (Hemiptera: Heteroptera) are known in the world (Henry, 2017).

The family Lygaeoidea contains both important phytophagous and also zoo- phagous insects.

The superfamily Lygaeoidea shows great diversity whitfeeding habits, the majority of the species feed on mature plant seeds while some utilize sap (Blissidae, many Lygaeidae, etc.).

Geocoridae species are predatory. Some lygaeoid taxons are specialized in some food plant species. For example the Cymidae and Pachygronthini are largely

restricted to Cyperaceae and Juncaceae, the Blissidae to monocotyledons, the Heterogastridae to Moraceae. Labiatae and Urticaceae, to grasses etc. (Slater, 1975).

Between 1922- 2020, we had the opportunity to make intensive collections, literatures data and observations on the Turkey lygaeoid fauna.

The studies were concentrated primarily on the Turkey fauna with some field studies and literatures data.

These studies for the Insect fauna of Turkey are of considerable zoogeographic importance. And the present paper is a preliminary list of host plants of Lygaeoidea of Turkey to interpret and implications relative to the Turkey flora.

Lygaeoidea species of Turkey have host plants that belong to the too much plant families, they are seventy-four plant family species.

A high number of Lygaeoidea species associated with more than one type of vegetation is known in Turkey, and species absorb green plant parts (e.g. leaves, seeds, or flowers).

The lygaeoid species can fit into a wide range of ecological habitats. E.g. such as leaves, seeds, flowers, petiole, on sedges, or in the seed.

These can cause damage in trees, shrubs and herbaceous plants. Therefore they are considered economically important.

## MATERIAL AND METHODS

In some literature about host plants of Lygaeoidea species located in Turkey limited informations are found.

The bibliographical references of the genera and species of host-plants for lygaeid's were given in the following literatures.

These are: Fahringer, 1922; Aysev, 1974; Çağlar, 1992; Çakır, 1988; Çakır, Önder, 1990; Hoberlandt, 1955; Kaya, Hıncal, 1991; Kıyak, 1990; Kıyak, 1993; Lodos, Önder, Pehlivan, Atalay, 1978; Lodos et al., 1999; Seidenstücker, 1958; 1960; 1965; Stichel, 1957-1962.

The aim of this study is to presented a list of Lygaeoidea species inhabiting on hostplants in Turkey according to our studies and the previous literatures.

These have been reviewed and listed. The host plant taxa were given at the family, genera and species level.

Lygaeoid species determined from each plant taxon are given in table 1.

In addition, the relevant source references has been given.

## RESULTS

All host plants and the Lygaeoidea species are given into a list in the following table 1.

**Table 1.** The plant relationships of Lygaeoidea species from Turkey.

Host Plant Taxa	Lygaeoidea recorded	Cited Literature(s)
<b>Adoxaceae</b>		
<i>Lonicera</i> sp.	<i>Heterogaster artemisiae</i> Schilling, 1829	Lodos et al., 1999
<i>Sambucus</i> sp.	<i>Heterogaster cathariae</i> (Geoffroy, 1785) <i>Nysius ericae ericae</i> (Schilling, 1829) <i>Spilostethus pandurus</i> (Scopoli, 1763)	Lodos et al., 1999
<i>Sambucus ebulus</i> L.	<i>Macroplax fasciata fasciata</i> (Herrich-Schaeffer, 1835) <i>Spilostethus saxatilis</i> (Scopoli, 1763) <i>Spilostethus pandurus</i> (Scopoli, 1763)	Fahringer, 1922, Stichel, 1957; Aysev, 1974
<i>Sambucus nigra</i> L.	<i>Lygaeus equestris</i> (Linnaeus, 1758)	Hoberlandt, 1955; Stichel, 1957; Aysev, 1974
<i>Viburnum</i> sp.	<i>Geocoris luridus luridus</i> (Fieber, 1844)	Çakır, 1988; Lodos et al., 1999

Table 1. Continued

<b>Amaranthaceae</b>		
<i>Beta vulgaris</i> L.	<i>Lygaeus equestris</i> (Linnaeus, 1758) <i>Macroplax fasciata fasciata</i> (Herrich-Schaeffer, 1835) <i>Nysius cymoides</i> (Spinola, 1837) <i>Nysius ericae ericae</i> (Schilling, 1829) <i>Nysius graminicola graminicola</i> (Kolenati, 1845) <i>Ortholomus punctipennis</i> (Herrich-Schaeffer, 1838) <i>Oxycarenus pallens</i> (Herrich-Schaeffer, 1850) <i>Paromius gracilis</i> (Rambur, 1839) <i>Spilostethus pandurus</i> (Scopoli, 1763) <i>Spilostethus saxatilis</i> (Scopoli, 1763) <i>Xanthochilus quadratus</i> (Fabricius, 1798)	Stichel, 1957; Lodos et al., 1978, 1999
<i>Chenopodium</i> sp.	<i>Emblethis denticollis</i> Horváth, 1878 <i>Lygaeus equestris</i> (Linnaeus, 1758) <i>Macroplax fasciata fasciata</i> (Herrich-Schaeffer, 1835) <i>Nysius cymoides</i> (Spinola, 1837) <i>Nysius ericae ericae</i> (Schilling, 1829) <i>Nysius graminicola graminicola</i> (Kolenati, 1845) <i>Nysius senecionis senecionis</i> (Schilling, 1829) <i>Ortholomus punctipennis</i> (Herrich-Schaeffer, 1838) <i>Oxycarenus pallens</i> (Herrich-Schaeffer, 1850) <i>Paromius gracilis</i> (Rambur, 1839) <i>Peritrechus meridionalis</i> Puton, 1877 <i>Spilostethus saxatilis</i> (Scopoli, 1763) <i>Xanthochilus quadratus</i> (Fabricius, 1798)	Lodos et al., 1978, 1999; Péricart, 1998a.
<i>Spinacia</i> sp.	<i>Lygaeus equestris</i> (Linnaeus, 1758)	Lodos et al., 1999
<i>Spinacia oleracea</i> L.	<i>Emblethis denticollis</i> Horváth, 1878 <i>Geocoris erythrocephalus</i> (Lepelletier & Serville, 1825) <i>Geocoris luridus luridus</i> (Fieber, 1844) <i>Geocoris megacephalus</i> (Rossi, 1790) <i>Heterogaster urticae</i> (Fabricius, 1775) <i>Lamprodema maura</i> (Fabricius, 1803) <i>Lygaeus equestris</i> (Linnaeus, 1758) <i>Metapoplax origani</i> (Kolenati, 1845)	Lodos et al., 1978; Çakır, 1988; Lodos et al., 1999
<b>Amaryllidaceae</b>		
<i>Allium cepa</i> L.	<i>Nysius graminicola graminicola</i> (Kolenati, 1845)	Lodos et al., 1999
<b>Anacardiaceae</b>		
<i>Pistacia lentiscus</i> L.	<i>Macroplax fasciata fasciata</i> (Herrich-Schaeffer, 1835)	Stichel, 1957; Aysev, 1974
<i>Pistacia terebinthus</i> L.	<i>Arocatus longiceps</i> Stål, 1872 <i>Arocatus roeselii</i> (Schilling, 1829) <i>Macroplax fasciata fasciata</i> (Herrich-Schaeffer, 1835) <i>Microplax limbata</i> Fieber, 1864	Aysev, 1974 Lodos et al., 1999
<i>Pistacia vera</i> L.	<i>Beosus quadripunctatus</i> (Müller, 1766) <i>Camptocera glaberrima</i> (Walker, 1872) <i>Geocoris erythrocephalus</i> (Lepelletier & Serville, 1825) <i>Geocoris luridus luridus</i> (Fieber, 1844) <i>Emblethis angustus</i> Montandon, 1890 <i>Emblethis denticollis</i> Horváth, 1878 <i>Heterogaster urticae</i> (Fabricius, 1775) <i>Lamprodema maura</i> (Fabricius, 1803) <i>Leptodemus minutus</i> (Jakovlev, 1876) <i>Lethaeus cribratissimus</i> (Stål, 1859) <i>Lethaeus picipes</i> (Herrich-Schaeffer, 1850) <i>Lygaeus equestris</i> (Linnaeus, 1758) <i>Megalonotus colon</i> Puton, 1874 <i>Megalonotus maximus</i> (Puton, 1895) <i>Nysius cymoides</i> (Spinola, 1837) <i>Peritrechus flavicornis</i> Jakovlev, 1877 <i>Peritrechus rhomboidalis</i> Puton, 1877 <i>Spilostethus pandurus</i> (Scopoli, 1763) <i>Tropistethus lanternae</i> Linnavuori, 1960 <i>Xanthochilus saturnius</i> (Rossi, 1790)	Lodos et al., 1978; 1999; Çakır, 1988; Yanık & Yücel, 2001; Matocq et al., 2014; Şimşek & Bolu, 2016, 2017; Özgen et al., 2018; Özgen et al., 2020

Table 1. Continued

<i>Rhus</i> sp.	<i>Geocoris erythrocephalus</i> (Lepeletier & Serville, 1825) <i>Heterogaster artemisiae</i> Schilling, 1829 <i>Lygaeus creticus</i> Lucas, 1854 <i>Lygaeus equestris</i> (Linnaeus, 1758) <i>Nysius graminicola graminicola</i> (Kolenati, 1845) <i>Nysius cymoides</i> (Spinola, 1837) <i>Oxycarenus hyalinipennis</i> (A. Costa, 1843) <i>Oxycarenus pallens</i> (Herrich-Schaeffer, 1850) <i>Spilostethus pandurus</i> (Scopoli, 1763)	Çakır, 1988; Lodos et al., 1999
<b>Apiaceae</b>		
<i>Anethum graveolens</i> L.	<i>Brachyplax tenuis</i> (Mulsant & Rey, 1852) <i>Spilostethus saxatilis</i> (Scopoli, 1763)	Stichel, 1957; Aysev, 1974
<i>Ammi</i> sp.	<i>Nysius graminicola graminicola</i> (Kolenati, 1845)	Lodos et al., 1999
<i>Daucus carota</i> L.	<i>Geocoris erythrocephalus</i> (Lepeletier & Serville, 1825) <i>Spilostethus saxatilis</i> (Scopoli, 1763)	Fahringer, 1922; Aysev, 1974
<i>Daucus</i> sp.	<i>Oxycarenus pallens</i> (Herrich-Schaeffer, 1850) <i>Geocoris erythrocephalus</i> (Lepeletier & Serville, 1825)	Lodos et al., 1999
<i>Heracleum apiifolium</i> Boiss.	<i>Lygaeus equestris</i> (Linnaeus, 1758)	Kıyak, 1993
<i>Heracleum sphondylium</i> L.	<i>Spilostethus saxatilis</i> (Scopoli, 1763)	Stichel, 1957
<i>Pastinaca sativa</i> L.	<i>Spilostethus saxatilis</i> (Scopoli, 1763)	Stichel, 1957; Aysev, 1974
<i>Pastinaca schekakul</i> Russ.	<i>Geocoris erythrocephalus</i> (Lepeletier & Serville, 1825)	Çakır, 1988
<i>Pimpinella anisum</i> L.	<i>Lygaeus equestris</i> (Linnaeus, 1758) <i>Metopoplax origani</i> (Kolenati, 1845) <i>Nysius graminicola graminicola</i> (Kolenati, 1845) <i>Ortholomus carinatus</i> (Lindberg, 1932) <i>Spilostethus pandurus</i> (Scopoli, 1763)	Lodos et al., 1978
<i>Seseli hippomarathrum</i> Jacq.	<i>Lygaeus equestris</i> (Linnaeus, 1758)	Stichel, 1957; Aysev, 1974
<i>Torilis</i> sp.	<i>Metopoplax origani</i> (Kolenati, 1845)	Aysev, 1974
<b>Apocynaceae</b>		
<i>Nerium oleander</i> L.	<i>Lygaeus creticus</i> Lucas, 1853 <i>Caenocoris nerii</i> (Germar, 1847)	Péricart, 1998a; Matocq et al. 2014
<i>Vincetoxicum officinale</i> Moench	<i>Horvathiolus superbus</i> (Pollich, 1781) <i>Lygaeus equestris</i> (Linnaeus, 1758) <i>Tropidothorax leucopterus</i> (Goeze, 1778) <i>Lygaeus simulans</i> Deckert, 1985 <i>Spilostethus saxatilis</i> (Scopoli, 1763)	Stichel, 1957; Aysev, 1974; Péricart, 1998a
<i>Vincetoxicum stepposum</i> (Pobed)	<i>Spilostethus saxatilis</i> (Scopoli, 1763)	Péricart, 1998a
<i>Verbascum sinuatum</i> L.	<i>Emblethis angustus</i> Montandon, 1890	Özsaraç et al., 2001
<b>Araliaceae</b>		
<i>Hedera helix</i> L.	<i>Geocoris ater</i> (Fabricius, 1787)	Çakır, 1988
<i>Hedera</i> sp	<i>Spilostethus pandurus</i> (Scopoli, 1763)	Lodos et al., 1999
<b>Asteraceae</b>		
Asteraceae	<i>Metopoplax origani</i> (Kolenati, 1845) <i>Microplax interrupta</i> (Fieber, 1837) <i>Oxycarenus pallens</i> (Herrich-Schaeffer, 1850)	Aysev, 1974; Matocq et al., 2014
<i>Achillea odorata</i> L.	<i>Lygaeus equestris</i> (Linnaeus, 1758)	Fahringer, 1922; Stichel, 1957
<i>Achillea</i> sp.	<i>Spilostethus pandurus</i> (Scopoli, 1763) <i>Nysius thymi thymi</i> (Wolff, 1804) <i>Nysius ericae ericae</i> (Schilling, 1829)	Kıyak, 1993; Péricart, 1998a
<i>Anthemis</i> sp.	<i>Geocoris erythrocephalus</i> (Lepeletier & Serville, 1825) <i>Lygaeus equestris</i> (Linnaeus, 1758) <i>Nysius ericae ericae</i> (Schilling, 1829) <i>Nysius senecionis senecionis</i> (Schilling, 1829) <i>Oxycarenus pallens</i> (Herrich-Schaeffer, 1850)	Stichel, 1957; Aysev 1974; Lodos et al., 1978, 1999; Çakır, 1988; Péricart, 1998a

Table 1. Continued

<i>Artemisia</i> sp.	<i>Aellopus atratus</i> (Goeze, 1778) <i>Icus angularis</i> Fieber, 1861 <i>Metopoplax fuscineris</i> Stål, 1872 <i>Nysius cymoides</i> (Spinola, 1837) <i>Nysius graminicola graminicola</i> (Kolenati, 1845) <i>Nysius ericae ericae</i> (Schilling, 1829) <i>Ortholomus punctipennis</i> (Herrich-Schaeffer, 1838)	Hoberlandt, 1955; Stichel, 1957; Seidenstücker, 1960; Aysev, 1974 Lodos et al., 1999; Péricart, 1998a
<i>Artemisia absinthium</i> L.	<i>Nysius cymoides</i> (Spinola, 1837)	Péricart, 1998a
<i>Artemisia campestris</i> L.	<i>Heterogaster artemisiae</i> Schilling, 1829	Stichel, 1957
<i>Artemisia maritima</i> L.	<i>Henestaris halophilus</i> (Burmeister, 1835)	Stichel, 1957
<i>Aster</i> sp.	<i>Oxycarenus pallens</i> (Herrich-Schaeffer, 1850)	Aysev, 1974
<i>Carduus nutans nutans</i> L.	<i>Spilostethus pandurus</i> (Scopoli, 1763)	Kiyak, 1990
<i>Carthamus flavescens</i> Willd.	<i>Geocoris erythrocephalus</i> (Lepeletier & Serville, 1825)	Aysev, 1974
<i>Carthamus</i> sp.	<i>Beosus quadripunctatus</i> (Müller, 1766)	Lodos et al., 1999
<i>Centaurea</i> sp.	<i>Beosus maritimus</i> (Scopoli, 1763) <i>Geocoris erythrocephalus</i> (Lepeletier & Serville, 1825) <i>Geocoris luridus luridus</i> (Fieber, 1844) <i>Graptopeltus validus</i> (Horváth, 1875) <i>Ischnodemus suturalis</i> Horváth, 1883 <i>Lygaeosoma sardeum sardeum</i> Spinola, 1837 <i>Lygaeus equestris</i> (Linnaeus, 1758) <i>Metopoplax origani</i> (Kolenati, 1845) <i>Nysius cymoides</i> (Spinola, 1837) <i>Nysius ericae ericae</i> (Schilling, 1829) <i>Nysius thymi thymi</i> (Wolff, 1804) <i>Oxycarenus hyalinipennis</i> (A. Costa, 1843) <i>Spilostethus pandurus</i> (Scopoli, 1763) <i>Spilostethus saxatilis</i> (Scopoli, 1763) <i>Xanthochilus minusculus</i> (Reuter, 1885)	Lodos et al., 1978: Çakır, 1988; Lodos et al., 1999
<i>Centaurea aggragata</i> Fisch. & C.A.Mey	<i>Geocoris pubescens</i> (Jakovlev, 1871)	Kiyak, 1993
<i>Centaurea jacea</i> L.	<i>Graptopeltus lynceus</i> (Fabricius, 1775)	Stichel, 1957
<i>Centaurea solstitialis</i> L.	<i>Oxycarenus pallens</i> (Herrich-Schaeffer, 1850) <i>Nysius cymoides</i> (Spinola, 1837)	Aysev, 1974; Lodos et al., 1999; Péricart, 1998a
<i>Conyza bonariensis</i> (L.)	<i>Xanthochilus saturnius</i> (Rossi, 1790)	Özsaraç et al., 2001
<i>Cichorium</i> sp.	<i>Oxycarenus pallens</i> (Herrich-Schaeffer, 1850)	Aysev, 1974
<i>Cirsium</i> sp.	<i>Artheneis alutacea</i> Fieber, 1861 <i>Emblethis griseus</i> (Wolff, 1802) <i>Geocoris arenarius</i> (Jakovlev, 1867) <i>Geocoris erythrocephalus</i> (Lepeletier & Serville, 1825) <i>Geocoris megacephalus</i> (Rossi, 1790) <i>Lygaeus equestris</i> (Linnaeus, 1758) <i>Nysius cymoides</i> (Spinola, 1837) <i>Nysius ericae ericae</i> (Schilling, 1829) <i>Nysius graminicola graminicola</i> (Kolenati, 1845) <i>Oxycarenus hyalinipennis</i> (A. Costa, 1843) <i>Oxycarenus pallens</i> (Herrich-Schaeffer, 1850) <i>Spilostethus pandurus</i> (Scopoli, 1763) <i>Spilostethus saxatilis</i> (Scopoli, 1763)	Stichel, 1957; Aysev 1974; Lodos et al., 1978, 1999; Çakır, 1988;
<i>Crepis</i> sp.	<i>Metopoplax origani</i> (Kolenati, 1845) <i>Oxycarenus pallens</i> (Herrich-Schaeffer, 1850) <i>Nysius ericae ericae</i> (Schilling, 1829)	Aysev, 1974; Péricart, 1998a
<i>Crepis foetida</i> L.	<i>Geocoris erythrocephalus</i> (Lepeletier & Serville, 1825)	Aysev, 1974
<i>Echinops</i> sp.	<i>Aphanus rolandri</i> (Linnaeus, 1758) <i>Neurocladus brachioides</i> (Dufour, 1851)	Hoberlandt, 1955
<i>Echinops viscosus</i> <i>bthynicus</i> (Boiss.)	<i>Cymus clavicularius</i> (Fallén, 1807)	Lodos et al., 1999



Table 1. Continued

<i>Erigeron</i> sp.	<i>Nysius senecionis senecionis</i> (Schilling, 1829)	Stichel, 1957; Péricart, 1998a
<i>Filago minima</i> (Sm.) Pers.	<i>Microplax interrupta</i> (Fieber, 1837)	Stichel, 1957
<i>Gundelia tournefortii</i> L.	<i>Lygaeus equestris</i> (Linnaeus, 1758) <i>Lethaeus fulvovarius</i> Puton, 1884	Kıyak, 1990, 1993
<i>Helichrysum</i> sp.	<i>Geocoris erythrocephalus</i> (Lepelletier & Serville, 1825) <i>Nysius ericae ericae</i> (Schilling, 1829) <i>Nysius helveticus</i> (Herrich-Schaeffer, 1850) <i>Paranysius fraterculus</i> Horvath, 1895	Kıyak, 1990, 1993; Péricart, 1998a
<i>Helichrysum italicum</i> (Roth) G. Don fil.	<i>Nysius immunis</i> (Walker, 1872)	Stichel, 1957
<i>Hieracium</i> sp.	<i>Spilostethus saxatilis</i> (Scopoli, 1763) <i>Nysius ericae ericae</i> (Schilling, 1829)	Stichel, 1957; Aysev, 1974; Péricart, 1998a
<i>Inula</i> sp.	<i>Cymus clavicularis</i> (Fallén, 1807) <i>Cymus melanocephalus</i> Fieber, 1861 <i>Geocoris arenarius</i> (Jakovlev, 1867) <i>Geocoris erythrocephalus</i> (Lepelletier & Serville, 1825) <i>Nysius graminicola graminicola</i> (Kolenati, 1845) <i>Nysius thymi thymi</i> (Wolff, 1804) <i>Oxycarenus pallens</i> (Herrich-Schaeffer, 1850) <i>Peritrechus meridionalis</i> Puton, 1877	Çakır, 1988 Lodos et al., 1999; Péricart, 1998a
<i>Lactuca</i> sp.	<i>Spilostethus pandurus</i> (Scopoli, 1763)	Kıyak, 1990
<i>Lactuca serriola</i> L.	<i>Lygaeus equestris</i> (Linnaeus, 1758) <i>Nysius cymoides</i> (Spinola, 1837)	Kıyak, 1990; Péricart, 1998a
<i>Matricaria</i> sp.	<i>Beosus quadripunctatus</i> (Müller, 1766) <i>Auchenodes costalis</i> (Lethierry, 1875) <i>Emblethis ciliatus</i> Horvath, 1875 <i>Geocoris erythrocephalus</i> (Lepelletier & Serville, 1825) <i>Geocoris luridus luridus</i> (Fieber, 1844) <i>Ischnopeza hirticornis</i> (Herrich-Schaeffer, 1850) <i>Lasiocoris crassicornis</i> (Lucas, 1849) <i>Metopoplax origani</i> (Kolenati, 1845) <i>Nysius cymoides</i> (Spinola, 1837) <i>Oxycarenus hyalinipennis</i> (A. Costa, 1843) <i>Oxycarenus pallens</i> (Herrich-Schaeffer, 1850)	Aysev, 1974; Çakır, 1988; Péricart, 1998b; Lodos et al., 1999
<i>Matricaria chamomilla</i> L.	<i>Cymus clavicularis</i> (Fallén, 1807) <i>Cymus melanocephalus</i> Fieber, 1861 <i>Emblethis brachynotus</i> Horváth, 1897 <i>Geocoris erythrocephalus</i> (Lepelletier & Serville, 1825) <i>Horvathiolus superbus</i> (Pollich, 1781) <i>Leptodemus minutus</i> (Jakovlev, 1874) <i>Lygaeosoma sardeum erythropterum</i> (Puton, 1876) <i>Macroplax fasciata fasciata</i> (Herrich-Schaeffer, 1835) <i>Metopoplax fuscineris</i> Stål, 1872 <i>Metopoplax origani</i> (Kolenati, 1845) <i>Nysius ericae ericae</i> (Schilling, 1829) <i>Nysius graminicola graminicola</i> (Kolenati, 1845) <i>Nysius senecionis senecionis</i> (Schilling, 1829) <i>Ortholomus carinatus</i> (Lindberg, 1932) <i>Oxycarenus pallens</i> (Herrich-Schaeffer, 1850) <i>Xanthochilus minusculus</i> (Reuter, 1885)	Lodos et al., 1978; 1999; Stichel, 1957
<i>Tripleuraspermum inodorum</i> (L.) Sch. Bip.	<i>Metopoplax origani</i> (Kolenati, 1845)	Stichel, 1957; Aysev, 1974
<i>Onopordon</i> sp.	<i>Beosus maritimus</i> (Scopoli, 1763) <i>Geocoris ater</i> (Fabricius, 1787) <i>Geocoris erythrocephalus</i> (Lepelletier & Serville, 1825) <i>Graptopeltus validus</i> (Horváth, 1875) <i>Henestaris kareli</i> Hoberlandt, 1956 <i>Ischnopeza hirticornis</i> (Herrich-Schaeffer, 1850) <i>Leptodemus minutus</i> (Jakovlev, 1874) <i>Lygaeosoma sardeum sardeum</i> Spinola, 1837 <i>Lygaeus equestris</i> (Linnaeus, 1758)	Lodos et al., 1978, 1999; Çakır, 1988

Table 1. Continued

	<i>Macroplox fasciata fasciata</i> (Herrich-Schaeffer, 1835) <i>Nysius graminicola graminicola</i> (Kolenati, 1845) <i>Oxycarenus pallens</i> (Herrich-Schaeffer, 1850) <i>Platyplax inermis</i> (Rambur, 1839) <i>Spilostethus pandurus</i> (Scopoli, 1763) <i>Spilostethus saxatilis</i> (Scopoli, 1763)	
<i>Onopordon tauricum</i> Willd.	<i>Spilostethus pandurus</i> (Scopoli, 1763)	Fahringer, 1922
<i>Scolymus hispanicus</i> L.	<i>Geocoris erythrocephalus</i> (Lepeletier & Serville, 1825)	Aysev, 1974
<i>Senecio</i> sp.	<i>Nysius senecionis senecionis</i> (Schilling, 1829) <i>Nysius thymi thymi</i> (Wolff, 1804)	Hoberlandt, 1955; Péricart, 1998a
<i>Senecio jakobaeae</i> L.	<i>Spilostethus saxatilis</i> (Scopoli, 1763) <i>Nysius senecionis senecionis</i> (Schilling, 1829)	Stichel, 1957; Aysev, 1974; Péricart, 1998a
<i>Senecio vernalis</i> Waldst. & Kit.	<i>Oxycarenus pallens</i> (Herrich-Schaeffer, 1850)	Aysev, 1974
<i>Senecio viscosus</i> L.	<i>Nysius senecionis senecionis</i> (Schilling, 1829)	Stichel, 1957; Péricart, 1998a
<i>Senecio vulgaris</i> L.	<i>Melanocoryphus albomaculatus</i> (Goeze, 1778)	Stichel, 1957; Aysev, 1974
<i>Sonchus</i> sp	<i>Oxycarenus pallens</i> (Herrich-Schaeffer, 1850) <i>Nysius ericae ericae</i> (Schilling, 1829)	Péricart, 1998a; Lodos et al., 1999
<i>Taraxacum</i> sp.	<i>Lygaeus equestris</i> (Linnaeus, 1758) <i>Nysius ericae ericae</i> (Schilling, 1829)	Aysev, 1974; Péricart, 1998a
<i>Taraxacum officinale</i> (L.)	<i>Oxycarenus pallens</i> (Herrich-Schaeffer, 1850)	Aysev, 1974
<b>Berberidaceae</b>		
<i>Berberis</i> sp.	<i>Geocoris ater</i> (Fabricius, 1787)	Çakır, 1988; Lodos et al., 1999
<b>Betulaceae</b>		
<i>Alnus</i> sp.	<i>Horvathiolus superbus</i> (Pollich, 1781) <i>Spilostethus pandurus</i> (Scopoli, 1763)	Lodos et al., 1978, 1999
<i>Alnus glutinosa</i> (L.) Gaertn.	<i>Arocatus roeselii</i> (Schilling, 1829) <i>Oxycarenus modestus</i> (Fallén, 1829) <i>Kleidocerys resedae resedae</i> (Panzer, 1797)	Stichel, 1957; Aysev, 1974; Péricart, 1998a
<i>Alnus incana</i> (L.) Moench	<i>Oxycarenus modestus</i> (Fallén, 1829)	Stichel, 1957
<i>Alnus viridis</i> (Chaix.) D.C.	<i>Kleidocerys resedae resedae</i> (Panzer, 1797)	Aysev, 1974; Péricart, 1998a
<i>Betula</i> sp.	<i>Kleidocerys resedae resedae</i> (Panzer, 1797)	Aysev, 1974
<i>Betula verrucosa</i> Ehrh.	<i>Kleidocerys resedae resedae</i> (Panzer, 1797)	Yıldırım & Eroğlu, 2015; Péricart, 1998a
<i>Betula vulgaris</i> Roth	<i>Nysius ericae ericae</i> (Schilling, 1829) <i>Spilostethus pandurus</i> (Scopoli, 1763)	Stichel, 1957; Lodos et al., 1978
<i>Carpinus betulus</i> L.	<i>Kleidocerys resedae resedae</i> (Panzer, 1797)	Aysev, 1974
<i>Corylus</i> sp.	<i>Emblethis angustus</i> Montandon, 1890	Lodos et al., 1978
<i>Corylus avellana</i> L.	<i>Beosus maritimus</i> (Scopoli, 1763) <i>Horvathiolus superbus</i> (Pollich, 1781) <i>Kleidocerys resedae resedae</i> (Panzer, 1797) <i>Metopoplax origani</i> (Kolenati, 1845)	Aysev, 1974; Lodos et al., 1978, 1999;
<b>Boraginaceae</b>		
<i>Alkanna</i> sp.	<i>Brachyplax tenuis</i> (Mulsant & Rey, 1852) <i>Hyalochilus dolosus</i> Horváth, 1897	Lodos et al., 1999
<i>Anchusa</i> sp.	<i>Geocoris erythrocephalus</i> (Lepeletier & Serville, 1825)	Çakır, 1988 Lodos et al., 1999
<i>Anchusa azurea</i> Mill.	<i>Geocoris erythrocephalus</i> (Lepeletier & Serville, 1825)	Çakır, 1988
<i>Anchusa officinalis</i> L.	<i>Aellopus atratus</i> (Goeze, 1778)	Stichel, 1957

Table 1. Continued

<i>Borago officinalis</i> L.	<i>Aellopus atratus</i> (Goeze, 1778)	Stichel, 1957
<i>Cynoglossum officinale</i> L.	<i>Aellopus atratus</i> (Goeze, 1778)	Stichel, 1957
<i>Echium</i> sp.	<i>Aellopus atratus</i> (Goeze, 1778) <i>Geocoris erythrocephalus</i> (Lepelletier & Serville, 1825) <i>Geocoris megacephalus</i> (Rossi, 1790) <i>Metopoplax origani</i> (Kolenati, 1845) <i>Nysius graminicola graminicola</i> (Kolenati, 1845) <i>Trichaphanus fuentei</i> (Puton, 1894)	Seidenstücker, 1958; Lodos et al., 1978; 1999; Çakır, 1988; Péricart, 1998a
<i>Echium italicum</i> L.	<i>Geocoris arenarius</i> (Jakovlev, 1867) <i>Geocoris ater</i> (Fabricius, 1787)	Çakır, 1988
<i>Echium plantagineum</i> L.	<i>Geocoris erythrocephalus</i> (Lepelletier & Serville, 1825)	Çakır, 1988
<i>Echium vulgare</i> L.	<i>Aellopus atratus</i> (Goeze, 1778) <i>Emblethis verbasci</i> (Fabricius, 1803) <i>Graptopeltus lynceus</i> (Fabricius, 1775) <i>Platyplax salviae</i> (Schilling, 1829)	Stichel, 1957
<i>Heliotropium</i> sp.	<i>Oxycarenus pallens</i> (Herrich-Schaeffer, 1850)	Lodos et al., 1999
<i>Hormuzakia aggregata</i> Lehm. Gusuleac	<i>Apterola kuenckeli rubicunda</i> (Stål, 1872) <i>Apterola lownii</i> (Saunders, 1876)	Stichel, 1957
<b>Brassicaceae</b>		
Brassicaceae	<i>Geocoris erythrocephalus</i> (Lepelletier & Serville, 1825) <i>Lygaeus equestris</i> (Linnaeus, 1758) <i>Metopoplax origani</i> (Kolenati, 1845) <i>Peritrechus gracilicornis</i> Puton, 1877 <i>Spilostethus saxatilis</i> (Scopoli, 1763)	Aysev, 1974; Çakır, 1988 Lodos et al., 1999
<i>Aethionema</i> sp.	<i>Geocoris erythrocephalus</i> (Lepelletier & Serville, 1825) <i>Lygaeus equestris</i> (Linnaeus, 1758)	Lodos et al., 1978; Çakır, 1988
<i>Alyssum condensatum</i> Boiss. Et Hausskn	<i>Emblethis verbasci</i> (Fabricius, 1803)	Stichel, 1957
<i>Alyssum troodi</i> Boiss.	<i>Emblethis verbasci</i> (Fabricius, 1803)	Stichel, 1957
<i>Brassica napus</i> (L.)	<i>Nysius cymoides</i> (Spinola, 1837)	Demirel (2009)
<i>Lepidium</i> sp.	<i>Emblethis denticollis</i> Horváth, 1878 <i>Nysius thymi thymi</i> (Wolff, 1804) <i>Nysius ericae ericae</i> (Schilling, 1829)	Péricart, 1998a; Özsaraç & Kiyak, 2001
<i>Capsella bursa-pastoris</i> (L.) Medik.	<i>Spilostethus pandurus</i> (Scopoli, 1763)	Özsaraç & Kiyak, 2001
<i>Cardaria draba</i> L.	<i>Spilostethus pandurus</i> (Scopoli, 1763)	Özsaraç & Kiyak, 2001
<i>Lepidium draba</i> (L.) Desv.	<i>Lygaeus equestris</i> (Linnaeus, 1758)	Kiyak, 1990; Özsaraç & Kiyak, 2001
<i>Descurania sophia</i> (L.) Webb	<i>Oxycarenus pallens</i> (Herrich-Schaeffer, 1850)	Aysev, 1974
<i>Sinapis</i> sp.	<i>Artheneis foveolata</i> Spinola, 1837 <i>Beosus quadripunctatus</i> (Müller, 1766) <i>Dimorphopterus spinolae</i> (Signoret, 1857) <i>Geocoris arenarius</i> (Jakovlev, 1867) <i>Geocoris erythrocephalus</i> (Lepelletier & Serville, 1825) <i>Geocoris luridus luridus</i> (Fieber, 1844) <i>Lygaeus equestris</i> (Linnaeus, 1758) <i>Metopoplax fuscineris</i> Stål, 1872 <i>Metopoplax origani</i> (Kolenati, 1845) <i>Nysius graminicola graminicola</i> (Kolenati, 1845) <i>Nysius thymi thymi</i> (Wolff, 1804) <i>Oxycarenus pallens</i> (Herrich-Schaeffer, 1850)	Çakır, 1988; Lodos et al., 1999
<i>Sinapis arvensis</i> L.	<i>Leptodemus minutus</i> (Jakovlev, 1874) <i>Metopoplax origani</i> (Kolenati, 1845) <i>Nysius graminicola graminicola</i> (Kolenati, 1845) <i>Oxycarenus pallens</i> (Herrich-Schaeffer, 1850)	Aysev, 1974; Lodos et al., 1978
<b>Cannabaceae</b>		
<i>Humulus lupulus</i> L.	<i>Kleidocerys ericae</i> (Horváth, 1908)	Lodos et al., 1978
<i>Solanum nigrum</i> L.	<i>Taphropeltus contractus</i> (Herrich-Schaeffer, 1835)	Stichel, 1957



Table 1. Continued

<b>Capparaceae</b>		
<i>Capparis</i> sp.	<i>Oxycarenus pallens</i> (Herrich-Schaeffer, 1850)	Lodos et al., 1999; Özgen et al., 2020
<i>Capparis spinosa</i> L.	<i>Caenocoris nerii</i> (Germar, 1847) <i>Heterogaster urticae</i> (Fabricius, 1775) <i>Lamprodema maura</i> (Fabricius, 1803) <i>Spilostethus pandurus</i> (Scopoli, 1763)	Lodos et al., 1978, 1999
<b>Caryophyllaceae</b>		
<i>Herniaria</i> sp.	<i>Cymus clavicularis</i> (Fallén, 1807)	Stichel, 1957
<i>Herniaria glabra</i> L.	<i>Nysius senecionis senecionis</i> (Schilling, 1829)	Stichel, 1957; Péricart, 1998a
<i>Illecebrum verticillatum</i> L.	<i>Cymus clavicularis</i> (Fallén, 1807)	Stichel, 1957; Aysev, 1974
<i>Saponaria</i> sp.	<i>Geocoris erythrocephalus</i> (Lepelletier & Serville, 1825)	Çakır, 1988
<i>Dianthus carthusianorum</i> L.	<i>Lygaeus equestris</i> (Linnaeus, 1758)	Özsaraç et al., 2001
<i>Spergula arvensis</i> L.	<i>Lygaeus equestris</i> (Linnaeus, 1758)	Özsaraç et al., 2001
<i>Silene longipetale</i> Vent.	<i>Beosus maritimus</i> (Scopoli, 1763) <i>Emblethis verbasci</i> (Fabricius, 1803)	Stichel, 1957
<b>Cistaceae</b>		
<i>Cistus</i> sp.	<i>Cymus melanocephalus</i> Fieber, 1861 <i>Geocoris erythrocephalus</i> (Lepelletier & Serville, 1825) <i>Kleidocerys ericae</i> (Horváth, 1908) <i>Macroplox fasciata fasciata</i> (Herrich-Schaeffer, 1835) <i>Metopoplax origani</i> (Kolenati, 1845) <i>Nysius immunis</i> (Walker, 1872) <i>Orsillus depressus</i> (Mulsant & Rey, 1852) <i>Raglius tristis</i> (Fieber, 1861) <i>Spilostethus pandurus</i> (Scopoli, 1763) <i>Stygnocoris sabulosus</i> (Schilling, 1829)	Çakır, 1988 Lodos et al., 1999
<i>Cistus albidus</i> L.	<i>Ischnopeza hirticornis</i> (Herrich-Schaeffer, 1850) <i>Macroplox fasciata fasciata</i> (Herrich-Schaeffer, 1835) <i>Nysius graminicola graminicola</i> (Kolenati, 1845)	Lodos et al., 1978
<i>Cistus creticus</i> L.	<i>Macroplox fasciata fasciata</i> (Herrich-Schaeffer, 1835)	Stichel, 1957; Aysev, 1974
<i>Cistus parviflorus</i> Lam.	<i>Macroplox fasciata fasciata</i> (Herrich-Schaeffer, 1835)	Stichel, 1957; Aysev, 1974
<i>Cistus salviaefolius</i> L.	<i>Macroplox fasciata fasciata</i> (Herrich-Schaeffer, 1835)	Stichel, 1957; Aysev, 1974
<i>Cistus villosus</i> L.	<i>Macroplox fasciata fasciata</i> (Herrich-Schaeffer, 1835)	Stichel, 1957; Aysev, 1974
<b>Convolvulaceae</b>		
<i>Convolvulus</i> sp.	<i>Geocoris ater</i> (Fabricius, 1787) <i>Lygaeus equestris</i> (Linnaeus, 1758) <i>Spilostethus saxatilis</i> (Scopoli, 1763) <i>Tropidothorax leucopterus</i> (Goeze, 1778)	Lodos et al., 1999
<i>Convolvulus elegantissima</i> L.	<i>Emblethis denticollis</i> Horváth, 1878	Özsaraç et al., 2001
<b>Crassulaceae</b>		
<i>Sedum acre</i> L.	<i>Ortholomus punctipennis</i> (Herrich-Schaeffer, 1838)	Stichel, 1957; Aysev, 1974
<b>Cucurbitaceae</b>		
<i>Citrus lanatus</i> Matsum. & Nakai	<i>Nysius cymoides</i> (Spinola, 1837)	Özgen et al., 2020
<i>Cucumis sativus</i> L.	<i>Nysius cymoides</i> (Spinola, 1837)	Özgen et al., 2020
<i>Cucurbita</i> sp.	<i>Megalonotus praetextatus</i> (Herrich-Schaeffer, 1835) <i>Oxycarenus pallens</i> (Herrich-Schaeffer, 1850)	Lodos et al., 1999
<i>Cucumis melo</i> L.	<i>Geocoris ater</i> (Fabricius, 1787)	Çakır, 1988
<b>Cornaceae</b>		
<i>Cornus</i> sp.	<i>Kleidocerys ericae</i> (Horváth, 1908)	Lodos et al., 1999

Table 1. Continued

<b>Cupressaceae</b>		
<i>Cupressus</i> sp.	<i>Cymus melanocephalus</i> Fieber, 1861 <i>Eremocoris fenestratus</i> (Herrich-Schaeffer, 1839) <i>Geocoris luridus</i> (Fieber, 1844) <i>Orsillus depressus</i> (Mulsant & Rey, 1852) <i>Orsillus maculatus</i> (Fieber, 1861) <i>Orsillus reyi</i> Puton, 1871 <i>Macroplox fasciata fasciata</i> (Herrich-Schaeffer, 1835) <i>Spilostethus pandurus</i> (Scopoli, 1763) <i>Spilostethus saxatilis</i> (Scopoli, 1763)	Stichel, 1957; Çakır, 1988 Lodos et al., 1999;
<i>Cupressus sempervirens</i> L.	<i>Eremocoris fenestratus</i> (Herrich-Schaeffer, 1839) <i>Orsillus maculatus</i> (Fieber, 1861) <i>Spilostethus pandurus</i> (Scopoli, 1763)	Lodos et al., 1978; Péricart, 1998a
<i>Juniperus</i> sp.	<i>Beosus quadripunctatus</i> (Müller, 1766) <i>Eremocoris fenestratus</i> (Herrich-Schaeffer, 1839) <i>Gastrodes grossipes grossipes</i> (De Geer, 1773) <i>Geocoris erythrocephalus</i> (Lepelletier & Serville, 1825) <i>Gonianotus galactodennus</i> Fieber, 1861 <i>Emblethis verbasci</i> (Fabricius, 1803) <i>Heterogaster artemisiae</i> Schilling, 1829 <i>Lethaeus cribratissimus</i> (Stål, 1859) <i>Lygaeosoma sardeum sardeum</i> Spinola, 1837 <i>Lygaeus equestris</i> (Linnaeus, 1758) <i>Microplax interrupta</i> (Fieber, 1837) <i>Nysius thymi thymi</i> (Wolff, 1804) <i>Orsillus depressus</i> (Mulsant & Rey, 1852) <i>Orsillus maculatus</i> (Fieber, 1861) <i>Orsillus reyi</i> Puton, 1871 <i>Oxycarenus pallens</i> (Herrich-Schaeffer, 1850) <i>Peritrechus meridionalis</i> Puton, 1877 <i>Spilostethus pandurus</i> (Scopoli, 1763) <i>Spilostethus saxatilis</i> (Scopoli, 1763)	Lodos et al., 1978, 1999 Çakır, 1988;
<i>Juniperus communis</i> L.	<i>Eremocoris plebejus</i> (Fallén, 1807) <i>Graptopeltus lynceus</i> (Fabricius, 1775)	Stichel, 1957; Péricart, 1998a
<i>Juniperus excelsa</i> M. Bieb.	<i>Eremocoris pellitus</i> Seidenstücker, 1965 <i>Orsillus depressus</i> (Mulsant & Rey, 1852)	Hoberlandt, 1955; Stichel, 1957; Seidenstücker, 1965; Péricart, 1998a
<b>Cyperaceae</b>		
<i>Carex</i> sp.	<i>Cymus clavicolus</i> (Fallén, 1807) <i>Cymus glandicolor</i> Hahn, 1832 <i>Cymus melanocephalus</i> Fieber, 1861	Hoberlandt, 1955; Stichel, 1957; Aysev, 1974
<i>Scirpus</i> sp.	<i>Cymus glandicolor</i> Hahn, 1832	Stichel, 1957
<b>Cystopteridaceae</b>		
<i>Cystopteris fragilis</i> (L.) Bernh.	<i>Lygaeus equestris</i> (Linnaeus, 1758)	Kıyak, 1993
<b>Dipsacaceae</b>		
<i>Knautia arvensis</i> (L.) Coult.	<i>Oxycarenus pallens</i> (Herrich-Schaeffer, 1850)	Aysev, 1974
<i>Scabiosa argentea</i> L.	<i>Geocoris erythrocephalus</i> (Lepelletier & Serville, 1825)	Kıyak, 1990
<i>Scabiosa canescens</i> Waldst. & Kit.	<i>Heterogaster artemisiae</i> Schilling, 1829	Stichel, 1957
<b>Dryopteridaceae</b>		
<i>Dryopteris</i> sp.	<i>Raglius tristis</i> (Fieber, 1861)	Lodos et al., 1999
<b>Elaeagnaceae</b>		
<i>Elaeagnus commutata</i> L.	<i>Lygaeus creticus</i> Lucas, 1854	Lodos et al., 1999
<i>Elaeagnus orientalis</i> L.	<i>Lygaeus equestris</i> (Linnaeus, 1758) <i>Spilostethus pandurus</i> (Scopoli, 1763)	Lodos et al., 1999;
<b>Ericaceae</b>		
<i>Arbutus</i> sp.	<i>Geocoris ater</i> (Fabricius, 1787)	Çakır, 1988; Lodos et al., 1999

Table 1. Continued

<i>Calluna</i> sp.	<i>Lamprodema maura</i> (Fabricius, 1803) <i>Ortholomus punctipennis</i> (Herrich-Schaeffer, 1838) <i>Pionosomus varius</i> (Wolff, 1804) <i>Scolopostethus thomsoni</i> Reuter, 1875	Stichel, 1957; Aysev, 1974;
<i>Calluna vulgaris</i> (L.) Hull	<i>Aellopus atratus</i> (Goeze, 1778) <i>Beosus maritimus</i> (Scopoli, 1763) <i>Cymus clavicularis</i> (Fallén, 1807) <i>Eremocoris plebejus</i> (Fallén, 1807) <i>Graptopeltus lynceus</i> (Fabricius, 1775) <i>Nysius senecionis senecionis</i> (Schilling, 1829) <i>Scolopostethus decoratus</i> (Hahn, 1833) <i>Tropistethus holosericus</i> (Scholtz, 1846)	Stichel, 1957
<i>Erica</i> sp.	<i>Ortholomus punctipennis</i> (Herrich-Schaeffer, 1838) <i>Nysius senecionis senecionis</i> (Schilling, 1829)	Stichel, 1957; Aysev, 1974; Lodos et al., 1978
<i>Erica arborea</i> L.	<i>Emblethis denticollis</i> Horváth, 1878 <i>Stygnocoris faustus</i> Horváth, 1888	Özsaraç et al., 2001; Péricart, 1998b
<i>Rhododendron</i> sp.	<i>Macroplox fasciata fasciata</i> (Herrich-Schaeffer, 1835) <i>Kleidocerys ericae</i> (Horváth, 1908)	Lodos et al., 1978 Lodos et al., 1999
<i>Rhododendron ferrugineum</i> L.	<i>Kleidocerys resedae resedae</i> (Panzer, 1797)	Aysev, 1974; Péricart, 1998a
<i>Rhododendron hirsutum</i> L.	<i>Kleidocerys resedae resedae</i> (Panzer, 1797)	Péricart, 1998a
<b>Euphorbiaceae</b>		
<i>Euphorbia</i> sp.	<i>Lygaeus equestris</i> (Linnaeus, 1758) <i>Oxycarenus pallens</i> (Herrich-Schaeffer, 1850) <i>Spilostethus pandurus</i> (Scopoli, 1763)	Kıyak, 1990; Lodos et al, 1978, 1999;
<i>Euphorbia gerardiana</i> Jacq.	<i>Emblethis ciliatus</i> Horváth, 1875	Stichel, 1957
<b>Fabaceae</b>		
<i>Acacia</i> sp.	<i>Geocoris luridus luridus</i> (Fieber, 1844)	Matocq et al., 2014
<i>Alhagi</i> sp.	<i>Artheneis alutacea</i> Fieber, 1861 <i>Spilostethus saxatilis</i> (Scopoli, 1763)	Lodos et al., 1999
<i>Astragalus</i> sp.	<i>Diomphalus hispidulus</i> Fieber, 1864 <i>Emblethis brachynotus</i> Horváth, 1897 <i>Emblethis ciliatus</i> Horvath, 1875 <i>Emblethis dilaticollis</i> (Jakovlev, 1874) <i>Emblethis griseus</i> (Wolff, 1802) <i>Geocoris erythrocephalus</i> (Lepelletier & Serville, 1825) <i>Geocoris grylloides</i> (Linnaeus, 1761) <i>Geocoris lineola lineola</i> (Rambur, 1839) <i>Geocoris megacephalus</i> (Rossi, 1790) <i>Geocoris pallidipennis pallidipennis</i> (A. Costa, 1843) <i>Gonianotus galactodennus</i> Fieber, 1861 <i>Horvathiolus superbus</i> (Pollich, 1781) <i>Lasiocoris crassicornis</i> (Lucas, 1849) <i>Lygaeosoma sardeum sardeum</i> Spinola, 1837 <i>Lygaeus equestris</i> (Linnaeus, 1758) <i>Macroplox fasciata fasciata</i> (Herrich-Schaeffer, 1835) <i>Megalonotus brevicornis</i> (Puton, 1883) <i>Megalonotus praetextatus</i> (Herrich-Schaeffer, 1835) <i>Metopoplax fuscineris</i> Stål, 1872 <i>Metopoplax origani</i> (Kolenati, 1845) <i>Microplax interrupta</i> (Fieber, 1837) <i>Nysius ericae ericae</i> (Schilling, 1829) <i>Nysius helveticus</i> (Herrich-Schaeffer, 1850) <i>Oxycarenus pallens</i> (Herrich-Schaeffer, 1850) <i>Rhyparochromus phoeniceus</i> (Rossi, 1794) <i>Spilostethus pandurus</i> (Scopoli, 1763) <i>Spilostethus saxatilis</i> (Scopoli, 1763) <i>Stygnocorisella mayeti</i> (Puton, 1879) <i>Xanthochilus minusculus</i> (Reuter, 1885) <i>Paranysius fraterculus</i> Horvath, 1895	Hoberlandt, 1955; Seidenstücker, 1958; Aysev, 1974; Çakır, 1988; Çakır & Önder, 1990; Kıyak, 1990; Lodos et al., 1999; Péricart, 1998a,b.

Table 1. Continued

<i>Astragalus hamasus</i> L.	<i>Lygaeus equestris</i> (Linnaeus, 1758)	Özsaraç & Kıyak, 2001; Özsaraç et al., 2001
<i>Astragalus microcephalus</i> Willd.	<i>Geocoris grylloides</i> (Linnaeus, 1761) <i>Geocoris lineola lineola</i> (Rambur, 1839) <i>Henestaris laticeps laticeps</i> (Curtis, 1836) <i>Macroplox fasciata fasciata</i> (Herrich-Schaeffer, 1835) <i>Nysius graminicola graminicola</i> (Kolenati, 1845) <i>Rhyparochromus phoeniceus</i> (Rossi, 1794) <i>Spilostethus saxatilis</i> (Scopoli, 1763) <i>Xanthochilus quadratus</i> (Fabricius, 1798)	Çağlar, 1992
<i>Astragalus spruneri</i> Boiss.	<i>Lygaeus equestris</i> (Linnaeus, 1758)	Özsaraç & Kıyak, 2001
<i>Cicer arietum</i> L.	<i>Nysius graminicola graminicola</i> (Kolenati, 1845) <i>Nysius thymi thymi</i> (Wolff, 1804)	Lodos et al., 1999
<i>Coronilla varia</i> (L.) Lassen	<i>Heterogaster artemisiae</i> Schilling, 1829	Stichel, 1957
<i>Dorycnium suffruticosum</i> Will.	<i>Macroplox fasciata fasciata</i> (Herrich-Schaeffer, 1835)	Stichel, 1957; Aysev, 1974
<i>Dorycnium hirsutum</i> L.	<i>Rhyparochromus phoeniceus</i> (Rossi, 1794)	Özsaraç et al., 2001
<i>Genista</i> sp.	<i>Homoscelis ruficollis</i> Horvath, 1884 <i>Spilostethus saxatilis</i> (Scopoli, 1763) <i>Spilostethus pandurus</i> (Scopoli, 1763)	Seidenstücker, 1960 Lodos et al., 1999
<i>Glychirizza glabra</i> L.	<i>Geocoris erythrocephalus</i> (Lepeletier & Serville, 1825) <i>Nysius thymi thymi</i> (Wolff, 1804)	Lodos et al., 1999
<i>Glycine soja</i> Siebold & Zucc.	<i>Geocoris ater</i> (Fabricius, 1787)	Lodos et al, 1978
<i>Lathyrus</i> sp	<i>Geocoris erythrocephalus</i> (Lepeletier & Serville, 1825)	Lodos et al., 1999
<i>Lens culinaris</i> L.	<i>Geocoris ater</i> (Fabricius, 1787) <i>Geocoris arenarius</i> (Jakovlev, 1867) <i>Horvathiolus superbus</i> (Pollich, 1781) <i>Lygaeus equestris</i> (Linnaeus, 1758) <i>Metopoplax fuscinervis</i> Stål, 1872 <i>Nysius graminicola graminicola</i> (Kolenati, 1845)	Kaya & Hıncal, 1991 Çakır, 1988; Lodos et al., 1999
<i>Medicago</i> sp.	<i>Cymus glandicolor</i> Hahn, 1832 <i>Geocoris erythrocephalus</i> (Lepeletier & Serville, 1825) <i>Lamprodema maura</i> (Fabricius, 1803) <i>Melanocoryphus tristrami</i> (Douglas & Scott, 1868) <i>Pionosomus varius</i> (Wolff, 1804)	Stichel, 1957; Çakır, 1988; Lodos et al., 1999
<i>Medicago maritima</i> Pall.	<i>Emblethis griseus</i> (Wolff, 1802) <i>Geocoris arenarius</i> (Jakovlev, 1867) <i>Geocoris ater</i> (Fabricius, 1787) <i>Geocoris erythrocephalus</i> (Lepeletier & Serville, 1825) <i>Geocoris lineola lineola</i> (Rambur, 1839) <i>Geocoris megacephalus</i> (Rossi, 1790) <i>Lethaeus cribratissimus</i> (Stål, 1859) <i>Lethaeus picipes</i> (Herrich-Schaeffer, 1850) <i>Oxycarenus pallens</i> (Herrich-Schaeffer, 1850)	Çakır, 1988; Lodos et al., 1999
<i>Medicago minima</i> L.	<i>Geocoris ater</i> (Fabricius, 1787) <i>Geocoris lineola lineola</i> (Rambur, 1839)	Çakır, 1988 Lodos et al., 1999
<i>Medicago disciformis</i> DC.	<i>Macroplox fasciata fasciata</i> (Herrich-Schaeffer, 1835)	Özsaraç et al., 2001
<i>Medicago sativa</i> L.	<i>Arocatus longiceps</i> Stål, 1872 <i>Beosus maritimus</i> (Scopoli, 1763) <i>Cymus melanocephalus</i> Fieber, 1861 <i>Emblethis griseus</i> (Wolff, 1802) <i>Geocoris erythrocephalus</i> (Lepeletier & Serville, 1825) <i>Lygaeus equestris</i> (Linnaeus, 1758) <i>Megalonotus sabulicola</i> (Thomson, 1870) <i>Metopoplax origani</i> (Kolenati, 1845) <i>Nysius cymoides</i> (Spinola, 1837) <i>Nysius ericae ericae</i> (Schilling, 1829) <i>Nysius graminicola graminicola</i> (Kolenati, 1845) <i>Nysius senecionis senecionis</i> (Schilling, 1829)	Lodos et al, 1978, 1999; Özbek, 1986; Kaya, 2018, Özgen et al., 2020

Table 1. Continued

	<i>Oxycarenus pallens</i> (Herrich-Schaeffer, 1850) <i>Peritrechus meridionalis</i> Puton, 1877 <i>Remaudiereana annulipes</i> (Bärensprung, 1859) <i>Scolopostethus pictus</i> (Schilling, 1829) <i>Spilostethus pandurus</i> (Scopoli, 1763) <i>Spilostethus saxatilis</i> (Scopoli, 1763)	
<i>Melilotus</i> sp.	<i>Lygaeus equestris</i> (Linnaeus, 1758) <i>Metopoplax origani</i> (Kolenati, 1845)	Kıyak, 1993 Lodos et al., 1999
<i>Melilotus officinalis</i> (L.) Pall.	<i>Beosus maritimus</i> (Scopoli, 1763) <i>Xanthochilus saturnius</i> (Rossi, 1790)	Kıyak, 1990
<i>Onobrychis</i> sp.	<i>Geocoris erythrocephalus</i> (Lepelletier & Serville, 1825) <i>Spilostethus pandurus</i> (Scopoli, 1763)	Çakır, 1988 Lodos et al., 1999
<i>Ononis</i> sp.	<i>Beosus quadripunctatus</i> (Müller, 1766) <i>Rhyparochromus pini</i> (Linnaeus, 1758)	Lodos et al., 1999
<i>Ononis spinosa</i> L.	<i>Spilostethus saxatilis</i> (Scopoli, 1763)	Stichel, 1957; Aysev, 1974
<i>Phaseolus</i> sp.	<i>Geocoris erythrocephalus</i> (Lepelletier & Serville, 1825) <i>Geocoris pallidipennis pallidipennis</i> (A. Costa, 1843)	Çakır, 1988; Çakır & Önder, 1990
<i>Phaseolus vulgaris</i> L.	<i>Geocoris erythrocephalus</i> (Lepelletier & Serville, 1825)	Lodos et al., 1999
<i>Prosopis</i> sp.	<i>Geocoris erythrocephalus</i> (Lepelletier & Serville, 1825)	Çakır, 1988
<i>Trifolium</i> sp.	<i>Cymus melanocephalus</i> Fieber, 1861 <i>Emblethis angustus</i> Montandon, 1890 <i>Geocoris erythrocephalus</i> (Lepelletier & Serville, 1825) <i>Geocoris megacephalus</i> (Rossi, 1790) <i>Geocoris pallidipennis pallidipennis</i> (A. Costa, 1843) <i>Ortholomus punctipennis</i> (Herrich-Schaeffer, 1838) <i>Peritrechus geniculatus</i> (Hahn, 1832)	Stichel, 1957; Aysev, 1974; Çakır, 1988; Kıyak, 1993; Lodos et al., 1999;
<i>Trifolium campestre</i> Scrieb.	<i>Heterogaster artemisiae</i> Schilling, 1829	Stichel, 1957
<i>Trifolium pratense</i> L.	<i>Beosus maritimus</i> (Scopoli, 1763)	Kıyak, 1990
<i>Trifolium repens</i> L.	<i>Geocoris ater</i> (Fabricius, 1787)	Lodos et al, 1978
<i>Vicia</i> sp.	<i>Geocoris erythrocephalus</i> (Lepelletier & Serville, 1825) <i>Lygaeus equestris</i> (Linnaeus, 1758) <i>Melanocoryphus albomaculatus</i> (Goeze, 1778) <i>Nysius cymoides</i> (Spinola, 1837) <i>Nysius ericae</i> (Schilling, 1829)	Çakır, 1988; Lodos et al., 1999;
<i>Vicia cracca</i> L.	<i>Heterogaster urticae</i> (Fabricius, 1775) <i>Leptodemus minutus</i> (Jakovlev, 1874) <i>Macroplox fasciata fasciata</i> (Herrich-Schaeffer, 1835) <i>Melanocoryphus albomaculatus</i> (Goeze, 1778) <i>Metopoplax origani</i> (Kolenati, 1845) <i>Nysius graminicola graminicola</i> (Kolenati, 1845) <i>Xanthochilus minusculus</i> (Reuter, 1885)	Lodos et al., 1978; Kıyak, 1993
<i>Vicia ervilia</i> (L.) Willd.	<i>Geocoris erythrocephalus</i> (Lepelletier & Serville, 1825)	Çakır, 1988
<i>Vicia faba</i> L.	<i>Geocoris erythrocephalus</i> (Lepelletier & Serville, 1825) <i>Kleidocerys ericae</i> (Horváth, 1908) <i>Lygaeus equestris</i> (Linnaeus, 1758) <i>Peritrechus gracilicornis</i> Puton, 1877 <i>Scolopostethus decoratus</i> (Hahn, 1833)	Lodos et al., 1978; Çakır, 1988; Lodos, et al., 1999
Fabaceae	<i>Eremocoris plebejus</i> (Fallén, 1807) <i>Ortholomus carinatus</i> (Lindberg, 1932)	Lodos et al., 1978; Kaya & Hıncal, 1991
<i>Hippocrepis unisiliquosa</i> L.	<i>Xanthochilus saturnius</i> (Rossi, 1790)	Özsaraç et al., 2001
<b>Fagaceae</b>		
<i>Castanea</i> sp.	<i>Geocoris erythrocephalus</i> (Lepelletier & Serville, 1825) <i>Homoscelis ruficollis</i> Horváth, 1884 <i>Arocatus longiceps</i> C. Stal, 1872	Seidenstücker, 1960; Çakır, 1988; Péricart, 1998a
<i>Castanea sativa</i> Mill.	<i>Emblethis angustus</i> Montandon, 1890 <i>Geocoris erythrocephalus</i> (Lepelletier & Serville, 1825) <i>Macroplox fasciata fasciata</i> (Herrich-Schaeffer, 1835) <i>Nysius graminicola graminicola</i> (Kolenati, 1845) <i>Raglius alboacuminatus</i> (Goeze, 1778)	Hoberlandt, 1955; Lodos et al., 1978



Table 1. Continued

<i>Fagus</i> sp.	<i>Geocoris erythrocephalus</i> (Lepeletier & Serville, 1825) <i>Macroplox fasciata fasciata</i> (Herrich-Schaeffer, 1835) <i>Metopoplax origani</i> (Kolenati, 1845) <i>Oxycarenus pallens</i> (Herrich-Schaeffer, 1850) <i>Scolopostethus affinis</i> (Schilling, 1829)	Lodos et al., 1978, 1999; Çakır, 1988
<i>Quercus</i> sp.	<i>Artheneis alutacea</i> Fieber, 1861 <i>Arocatus melanocephalus</i> (Fabricius, 1798) <i>Beosus maritimus</i> (Scopoli, 1763) <i>Cymus glandicolor</i> Hahn, 1832 <i>Cymus melanocephalus</i> Fieber, 1861 <i>Eremocoris fenestratus</i> (Herrich-Schaeffer, 1839) <i>Geocoris arenarius</i> (Jakovlev, 1867) <i>Geocoris erythrocephalus</i> (Lepeletier & Serville, 1825) <i>Geocoris luridus luridus</i> (Fieber, 1844) <i>Ischnopeza hirticornis</i> (Herrich-Schaeffer, 1850) <i>Ischnopeza pallipes</i> Puton, 1892 <i>Kleidocerys ericae</i> (Horváth, 1908) <i>Lygaeosoma sardeum sardeum</i> Spinola, 1837 <i>Lygaeus equestris</i> (Linnaeus, 1758) <i>Horvathiolus superbus</i> (Pollich, 1781) <i>Macroplox fasciata fasciata</i> (Herrich-Schaeffer, 1835) <i>Megalonotus praetextatus</i> (Herrich-Schaeffer, 1835) <i>Metopoplax origani</i> (Kolenati, 1845) <i>Microplax interrupta</i> (Fieber, 1837) <i>Microplax limbata</i> Fieber, 1864 <i>Nysius cymoides</i> (Spinola, 1837) <i>Nysius helveticus</i> (Herrich-Schaeffer, 1850) <i>Rhyparochromus vulgaris</i> (Schilling, 1829) <i>Tropistethus fasciatus</i> Ferrari, 1874 <i>Oxycarenus pallens</i> (Herrich-Schaeffer, 1850) <i>Spilostethus saxatilis</i> (Scopoli, 1763)	Lodos et al., 1978, 1999; Çakır, 1988; Özgen et al., 2012
<i>Quercus coccifera</i> L.	<i>Horvathiolus guttatus</i> (Rambur, 1839)	Hoferlandt, 1955
<i>Quercus ilex</i> L.	<i>Nysius ericae ericae</i> (Schilling, 1829) <i>Peritrechus gracilicornis</i> Puton, 1877 <i>Spilostethus pandurus</i> (Scopoli, 1763)	Lodos et al., 1999
<i>Quercus macrolepis</i>	<i>Nysius ericae ericae</i> (Schilling, 1829)	Lodos et al., 1999
<i>Quercus pubescens</i> Willd.	<i>Camptotelus lineolatus lineolatus</i> (Schilling, 1829) <i>Heterogaster affinis</i> Herrich-Schaeffer, 1835 <i>Lygaeus equestris</i> (Linnaeus, 1758) <i>Macroplox fasciata fasciata</i> (Herrich-Schaeffer, 1835) <i>Melanocoryphus albomaculatus</i> (Goeze, 1778) <i>Melanocoryphus tristrami</i> (Douglas & Scott, 1868) <i>Oxycarenus pallens</i> (Herrich-Schaeffer, 1850) <i>Spilostethus saxatilis</i> (Scopoli, 1763) <i>Geocoris erythrocephalus</i> (Lepeletier & Serville, 1825)	Çağlar, 1992; Özsarac et al., 2001
<i>Quercus robur</i> L.	<i>Kleidocerys resedae resedae</i> (Panzer, 1797)	Aysev, 1974
<b>Gentianaceae</b>		
<i>Gentiana asclepiadea</i> L.	<i>Spilostethus saxatilis</i> (Scopoli, 1763)	Stichel, 1957; Aysev, 1974
<b>Geraniaceae</b>		
<i>Erodium</i> sp.	<i>Lygaeus equestris</i> (Linnaeus, 1758) <i>Megalonotus praetextatus</i> (Herrich-Schaeffer, 1835) <i>Ortholomus carinatus</i> (Lindberg, 1932) <i>Platyplax inermis</i> (Rambur, 1839)	Lodos et al., 1978
<i>Geranium stepporum</i> Davis	<i>Spilostethus pandurus</i> (Scopoli, 1763)	Kiyak, 1990
<b>Grossulariaceae</b>		
<i>Ribes nigrum</i> L.	<i>Kleidocerys resedae resedae</i> (Panzer, 1797)	Aysev, 1974
<b>Hypericaceae</b>		
<i>Hypericum</i> sp.	<i>Cymus clavicularis</i> (Fallén, 1807) <i>Geocoris erythrocephalus</i> (Lepeletier & Serville, 1825) <i>Spilostethus saxatilis</i> (Scopoli, 1763)	Stichel, 1957; Aysev, 1974; Çakır, 1988; Lodos et al., 1999

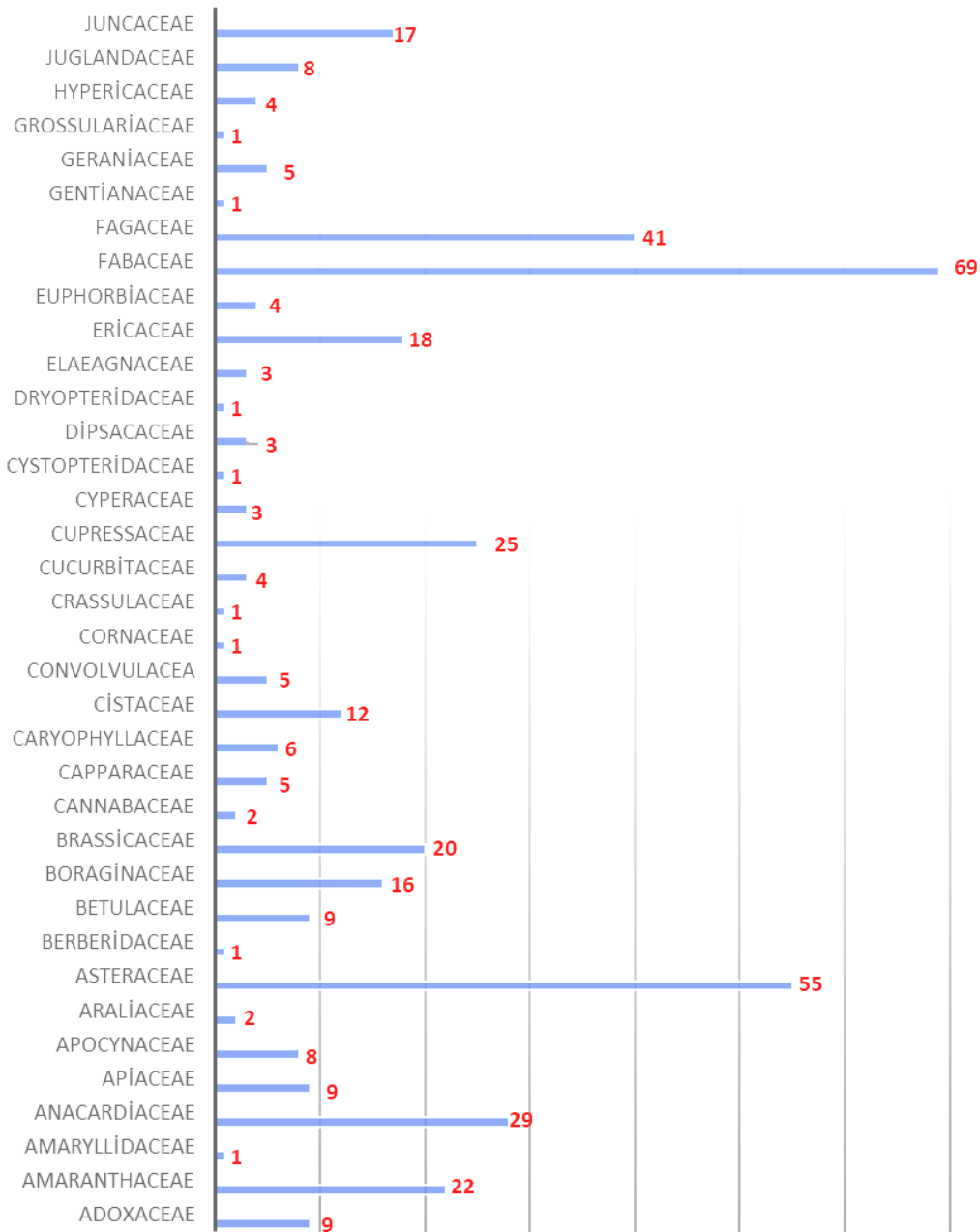
**Table 1.** Continued

<i>Hypericum perforatum</i> L.	<i>Geocoris erythrocephalus</i> (Lepeletier & Serville, 1825)	Lodos et al., 1978
<b>Juglandaceae</b>		
<i>Juglans</i> sp.	<i>Geocoris erythrocephalus</i> (Lepeletier & Serville, 1825)	Çakır, 1988
<i>Juglans regia</i> L.	<i>Arocatus longiceps</i> Stål, 1872 <i>Geocoris erythrocephalus</i> (Lepeletier & Serville, 1825) <i>Kleidocerys ericae</i> (Horváth, 1908) <i>Lygaeus creticus</i> Lucas, 1854 <i>Metopoplax origani</i> (Kolenati, 1845) <i>Rhyparochromus vulgaris</i> (Schilling, 1829) <i>Spilostethus pandurus</i> (Scopoli, 1763) <i>Stygnocoris rusticus</i> (Fallén, 1807)	Lodos et al., 1978, 1999
<b>Juncaceae</b>		
Juncaceae	<i>Cymus melanocephalus</i> Fieber, 1861	Hoberlandt, 1955; Aysev, 1974
<i>Juncus</i> sp.	<i>Cymus clavicularis</i> (Fallén, 1807) <i>Cymus glandicolor</i> Hahn, 1832 <i>Cymus melanocephalus</i> Fieber, 1861 <i>Dimorphopterus spinolae</i> (Signoret, 1857) <i>Geocoris ater</i> (Fabricius, 1787) <i>Henestaris halophilus</i> (Burmeister, 1835) <i>Holcocranum saturejiae</i> (Kolenati, 1845) <i>Ischnodemus quadratus</i> Fieber, 1837 <i>Metopoplax origani</i> (Kolenati, 1845) <i>Microplax interrupta</i> (Fieber, 1837) <i>Nysius cymoides</i> (Spinola, 1837) <i>Nysius graminicola graminicola</i> (Kolenati, 1845) <i>Nysius ericae ericae</i> (Schilling, 1829) <i>Oxycarenus hyalinipennis</i> (A. Costa, 1843) <i>Oxycarenus pallens</i> (Herrich-Schaeffer, 1850) <i>Peritrechus gracilicornis</i> Puton, 1877 <i>Spilostethus saxatilis</i> (Scopoli, 1763)	Hoberlandt, 1955; Stichel, 1957; Aysev, 1974 Lodos et al., 1999

**Table 2.** The number of Lygaeoidea species on hostplants family in Turkey.

Host Plant Family	Number of Lygaeoidea species on the host	Host Plant Family	Number of Lygaeoidea species on the host
Adoxaceae	9	Crassulaceae	1
Amaranthaceae	22	Cucurbitaceae	4
Amaryllidaceae	1	Cupressaceae	25
Anacardiaceae	29	Cyperaceae	3
Apiaceae	9	Cystopteridaceae	1
Apocynaceae	8	Dipsacaceae	3
Araliaceae	2	Dryopteridaceae	1
Asteraceae	55	Elaeagnaceae	3
Berberidaceae	1	Ericaceae	18
Betulaceae	9	Euphorbiaceae	4
Boraginaceae	16	Fabaceae	69
Brassicaceae	20	Fagaceae	41
Cannabaceae	2	Gentianaceae	1
Capparaceae	5	Geraniaceae	5
Caryophyllaceae	6	Grossulariaceae	1
Cistaceae	12	Hypericaceae	4
Convolvulacea	5	Juglandaceae	8
Cornaceae	1	Juncaceae	17

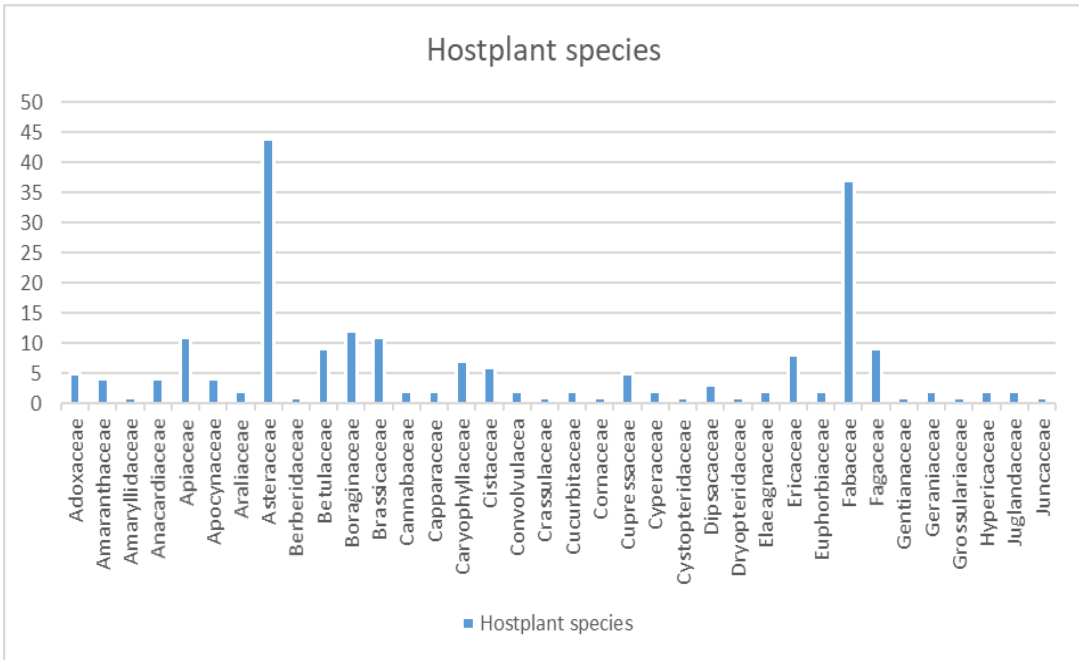
## Relationship of Lygaeoidea species and hostplant families



**Figure 1.** Distribution of Lygaeoidea species numbers by families of hostplants in Turkey.

**Table 3.** The number of hostplant species in Turkey.

Hostplant Families		Number of Hostplant species	Hostplant Families		Number of Hostplant species
1	Adoxaceae	5	19	Cucurbitaceae	4
2	Amaranthaceae	4	20	Cornaceae	1
3	Amaryllidaceae	1	21	Cupressaceae	5
4	Anacardiaceae	4	22	Cyperaceae	2
5	Apiaceae	11	23	Cystopteridaceae	1
6	Apocynaceae	4	24	Dipsacaceae	3
7	Araliaceae	2	25	Dryopteridaceae	1
8	Asteraceae	44	26	Elaeagnaceae	2
9	Berberidaceae	1	27	Ericaceae	8
10	Betulaceae	9	28	Euphorbiaceae	2
11	Boraginaceae	12	29	Fabaceae	37
12	Brassicaceae	11	30	Fagaceae	9
13	Cannabaceae	2	31	Gentianaceae	1
14	Capparaceae	2	32	Geraniaceae	2
15	Caryophyllaceae	7	33	Grossulariaceae	1
16	Cistaceae	6	34	Hypericaceae	2
17	Convolvulacea	2	35	Juglandaceae	2
18	Crassulaceae	1	36	Juncaceae	1



**Figure 2.** Hostplants species of Lygaeoidea species in Turkey.

## CONCLUSION AND DISCUSSION

In this study are confirmed 222 taxa as a host plants of Lygaeoidea from Turkey; they are belonging to 36 families. Of these 77 of 222 plant taxa of them are only genera level host, also 145 of them are species level. In this part of the study were Lygaeoidea species found on 36 host plant family in Turkey given. The most host plant species belong to Asteraceae (44 species), Fabaceae (37 species), Boraginaceae (12 species), Apiaceae (11 species), Brassicaceae (11 species) and Fagaceae (9 species) families (Table 3, Fig. 2).

It is uncertain how much of which Lygaeoid species are experts in plants, with the exception of some species where research is concentrated. Reliable data on the preferred habitats and nutrition of Lygaeoid species are not available for many species. However, according to some studies, it has been found that many lygaeoid species are found or fed on species from one or more plant families. (e.g. Aysev, 1974; Çağlar, 1992; Çakır, 1988; Hoberlandt, 1955; Kıyak, 1990; Kıyak, 1993; Lodos, Önder, Pehlivan, Atalay, 1978; Lodos et al., 1999; Stichel, 1957-1962). For this purpose, this article about the host plant species on the list of Turkey lygaeoid species in this study has been submitted.

When looking at this list, it can be seen that various species are present on one or more hosts. For example, *Lygaeus equestris* (Linnaeus, 1758) in 41 different hosts, *Macroplox fasciata fasciata* (Herrich-Schaeffer, 1835) in 24 different hosts, *Nysius graminicola graminicola* (Kolenati, 1845), *Nysius ericae ericae* (Schilling, 1829) and *Metopoplax origani* (Kolenati, 1845) in 22 different hosts were detected. In this respect, they are considered as "non-specific" because they are not limited to any plant species.

On the other hand, in this study; only "one species" was found in the host of 8 plant families, limited to any lygaeoid species. And in two plant taxa only "two species" were found, limited to any lygaeoid

species. Only "three species" were found in four plants, limited to any lygaeoid species. In three plant taxa only "five species" or "more species" were found, limited to any lygaeoid species. (Table 2, Figure 1).

Most Lygaeoidea species were found in Fabaceae (69 species), Asteraceae (55 species), Fagaceae (41 species) Anacardiaceae (29 species) and Cupressaceae (25 species) in plant families. Number of recorded Lygaeoidea species each host plant family were given Table 2 and Figure 1.

Other host plants family will be in next paper published.

Based on the aforementioned findings, it has been found that some species (such as *Lygaeus equestris*), *Macroplox fasciata fasciata* and *Nysius graminicola graminicola* prefer many host plants and feed on a large number of plant families. This preference spectrum can help to explain the harmful role of some lygaeoid species for economically loss related to them.

## ACKNOWLEDGEMENTS

We are deeply indebted to Prof. Dr Zeki AYTAÇ, (Gazi Univ. Faculty of Science Department of Biology, botanist of Gazi Herbarium), for the control of all host plants names.

## REFERENCES

- Aysev, N., 1974, *Ege Bölgesinde Lygaeidae Familyası Üzerinde Sistematik Çalışmalar*, Zirai Mücadele ve Zirai Karantina Genel Müdürlüğü Nebat Koruma Müzesi, 1974.
- Çağlar, S., 1992, Beynam ormanı ve çevresiyle Çubuk ve çevresi Hemiptera komünitesinde çalışmalar, Doktora Tezi, H. Ü. Fen Bil. Enst.
- Çakır, S., 1988, Türkiye Geocorinae (Heteroptera: Lygaeidae) faunası üzerinde sistematik çalışmalar, Yüksek Lisans Tezi, E.Ü. Fen Bil. Enst., İzmir: 1-81.
- Çakır, S., Önder, F., 1990, Turkey Geocorinae (Heteroptera: Lygaeidae) alt familyası üzerinde sistematik ve faunistik araştırmalar, *Türk Entomol. Derg.*, 14 (1):37-52, 1990.



- Demirel, N., 2009, Determination of heteroptera species on canola plants in Hatay province of Turkey. *African Journal of Agricultural Research*. 4(11):1226-1233.
- Fahringer, J., 1922, Eine Rynchotenausbeute aus der Türkei, Kleinasien und benachbarten Gebieten. *Konowia*, 1: 137-144.
- Henry, T. J., 2017, *Biodiversity of Heteroptera* In: Footitt R.G. and Adler P.H. (Eds), *Insect Biodiversity: Science and Society*, vol.1 2nd, ed., John Wiley & Sons Ltd., p. 279– 335.
- Hoberlandt, L., 1955, Results of the Zoological Scientific Expedition of the National Museum in Praha to Turkey-18: Hemiptera IV: Terrestriale Hemiptera-Heteroptera of Turkey, *Acta Ent. Mus. Nat. Pragae*, 3: 274., Prag.
- Kaya, K., 2018, Hatay İli Yonca Üretim Alanlarında Bulunan Böcek Faunasının Tespiti ve Bazı Türlerin Popülasyon Yoğunlukları. *Turkish Journal of Agriculture - Food Science and Technology*, 6(3): 352-359.
- Kaya, N., Hıncal, P., 1991, Denizli ili mercimek alanlarında bulunan böcek faunası, *Türk Ento. Dergisi*, 15(3): 173-181.
- Kiyak, S., 1990, Systematisch- Oekologische Untersuchungen Ueber Die Wanzen (Insecta: Heteroptera) Aus dem Gebiet Hazar- See, Maden und Ergani (Prov.Elazig)-I, *J. Biol. Fac. Sci. Arts Gazi Univ.* 1:43-95; II. *J. Biol. Fac. Sci. Arts Gazi Univ.* 1:97-144.
- Kiyak, S., 1993, Über terrestrische Wanzenarten Von Soğuksu National Park, *Priamus*. 6 (3/4): 131-156.
- Kiyak, S., Özdamar, H., 2017, Contribution to the Knowledge of the Genus *Apterola* (Heteroptera: Lygaeidae) in Turkey. *Mun. Ent. Zool.*, 12 (2): 653-654.
- Lodos, N.; Önder, F.; Pehlivan, E.; Atalay, R., 1978, *Ege ve Marmara Bölgesi Zararlı Böcek Faunasının Tespiti Üzerine Çalışmalar, Curculionidae, Scarabeidae (Coleoptera); Pentatomidae, Lygaeidae, Miridae (Heteroptera)*, T. C. Gıda-Tarım ve Hayv.Bkliği Zir.Müc. ve Kar.G. Müd. Basımevi, 301, Ankara.
- Lodos, N., Önder, F., Pehlivan, E., Atalay, R., Erkin, E., Karsavuran, Y., Tezcan, S., Aksoy, S., 1999, *Faunistic studies on Lygaeidae (Heteroptera) of Western Black Sea, Central Anatolia and Mediterranean Regions of Turkey*, E. Ü. Basımevi, İzmir, IX:1-58.
- Matocq, A., Pluot-Sigwalt, D., Özgen, İ. Terrestrial Hemiptera (Heteroptera) Collected In South-East Anatolia (Diyarbakır, Mardin And Elazığ Provinces) (Turkey): Second List. *Mun. Ent. Zool.*, 9(2), 884-930 (2014).
- Özbek, H. Erzurum'da Yoncadaki Böcek Faunasının Tespiti. *Atatürk Üniversitesi Ziraat Fakültesi Dergisi*, 17 (1-4): 1-16.
- Özgen, İ., Şen, S. Anlaş, S., 2012, Diyarbakır İli Eğil İlçesi Mera-Meşe Ekosisteminde Üç Farklı Örnekleme Yönteminde Insecta Biyoçeşitliliği. 21. Ulusal Biyoloji Kongresi, 3-7 Eylül, 1062-1063.
- Özgen, İ., Çerçi, B., Kaya, C., 2018, Heteroptera (Hemiptera) species determined in pistachio orchards of Siirt province with a new record of fauna of Turkey: *Yovata nergal* Linnavuori, 1993. *Cercetări Agronomice în Moldova*. Vol. LI , No. 4 (176): 87-95.
- Özgen, İ., Kara, K. B., Miroğlu, S., Koç, İ., Dioli, P., 2020, A new and potential pest of South-Eastern Anatolia in Turkey: *Nysius cymoides* (Spinola, 1837) (Heteroptera: Lygaeidae). *Mun. Ent. Zool.* 15 (1): 265-268.
- Özsaraç, Ö. Kiyak, S., 2001, A Study on the Heteroptera Fauna of Bozcaada (Çanakkale Province). *Turk J Zool.*, 25: 313-322.
- Özsaraç, H., Kiyak, S., Özsaraç, Ö. 2001, A Study on the Fauna of Heteroptera of Gökçeada (Çanakkale)-I. *Journal of the Institute of Science and Technology of Gazi University*, 14(3): 841-855.
- Péricart, J., 1998a, *Hémiptères Lygaeidae euro-méditerranéens, volume 1. Faune de France. Vol. 84A*. Fédération Française des Sociétés de Sciences Naturelles, Paris, 475 pp.
- Péricart, J., 1998b, *Hémiptères Lygaeidae euro-méditerranéens, volume 2. Faune de France. Vol. 84B*. Fédération Française des Sociétés de Sciences Naturelles, Paris, 453 pp.
- Schuh, R. T., Slater, J. A., 1995, True Bugs of the World (Hemiptera: Heteroptera) Classification and Natural History, Cornell Univ. Press, Ithaca, xii+316pp.
- Seidenstücker, G., 1958, Anadolu'dan Heteropterler II., *İst. Üniv. Fen Fak. Mec.*, Seri B, C. XXIII, (1-2): 119-129.

- Seidenstücker, G., 1960, Anadolu'dan Heteropterler III., *İst. Üniv. Fen Fak. Mec.*, Seri B, C. XXV, (3-4): 145-154.
- Seidenstücker, G., 1965, Zwei neue *Eremocoris* aus Anatolien (Heteroptera, Lygaeidae). *Reichenbachia*, 5 (17), 161-171.
- Slater, J.A., 1975, On the biology and zoogeography of Australian Lygaeidae (Hemiptera: Heteroptera) with special reference to the southwest fauna, *J. Aust. ent. Soc.*, 14: 47-64.
- Stichel, W., 1957-1962, *Illustrierte Bestimmungstabellen der Wanzen II. Europa (Hemiptera – Heteroptera Europae)*, Vol. IV:1-830, Berlin.
- Şimşek A., Bolu, H., 2016, Diyarbakır ili Antep fıstığı (*Pistacia vera* L.) alanlarındaki yararlı böcek faunasının belirlenmesi. *Bitki Koruma Bülteni*, 267-282.
- Şimşek A., Bolu, H., 2017, Diyarbakır İli Antepfıstığı (*Pistacia vera* L.) bahçelerindeki zararlı böcek faunasının belirlenmesi. *Dicle Üniversitesi Fen Bilimleri Dergisi*, 6 (2):43-58
- Yanık, E, Yücel, A., 2001, The pistachio (*P. vera* L.) pests, their population development and damage state in Sanliurfa province. Proceedings of the XI GREM-PA Seminar organized by the University of Harran with the collaboration of the FAOCIHEAM Inter-Regional Cooperative Research and Development Network on Nuts, Cilt 56. S. 301-309.
- Yazıcı, G., Sertkaya, E., 2020, A new pest of *Gossypium hirsutum* in Turkey: *Leptodemus minutus* Jakovlev 1876 (Hemiptera: Heteroptera: Lygaeidae: Oxycareninae). *MKU. Tar. Bil. Derg.* 25 (2): 256-261. DOI: 10.37908/mkutbd.730136.
- Yıldırım, E., Eroğlu, Z., 2015, Atatürk Üniversitesi (Erzurum) Yerleşkesinde Odunsu Bitkilerde Bulunan Zararlı Böcek Türleri. *Atatürk Üniv. Ziraat Fak. Derg.*, 46(1): 29-37.