

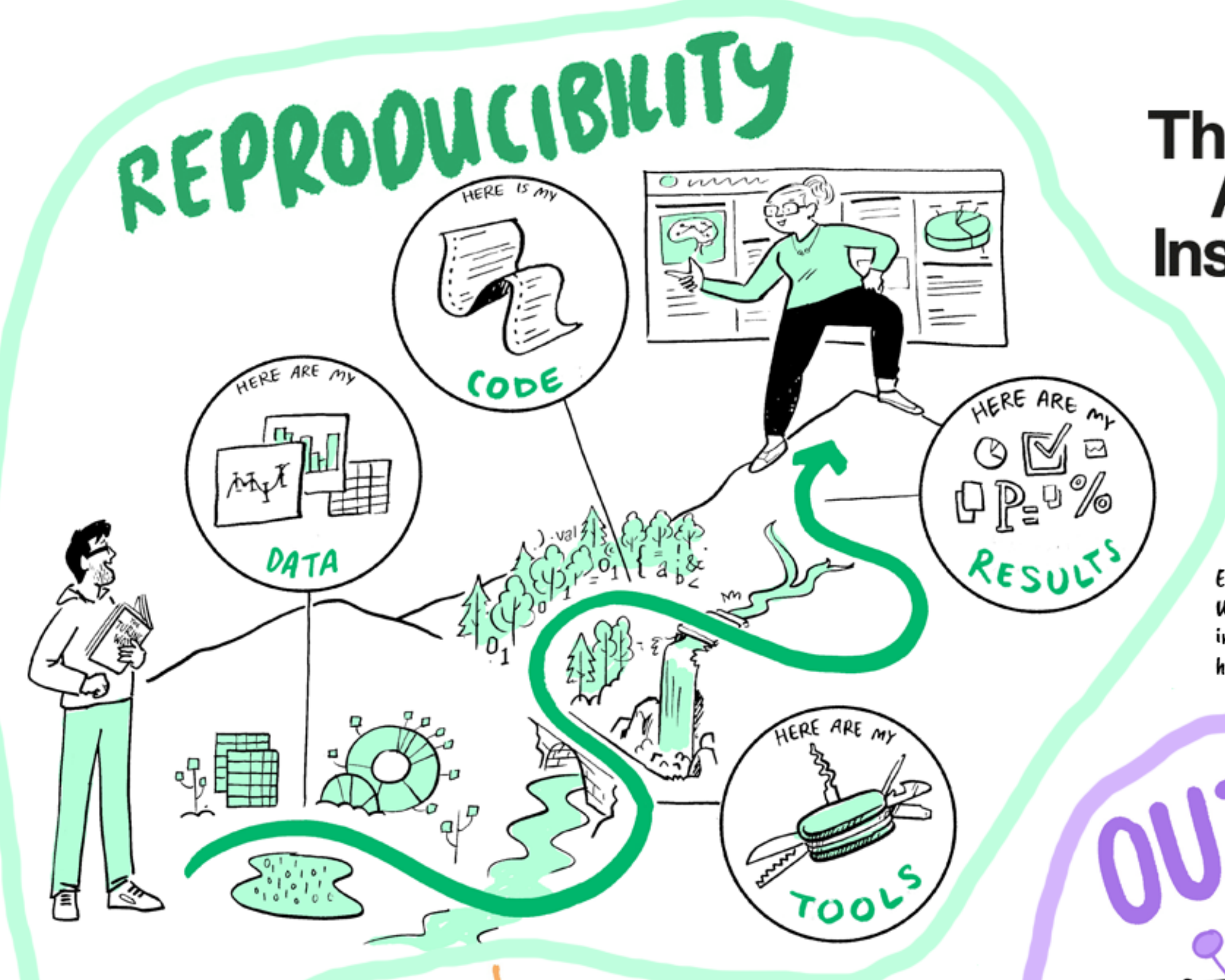


@TuringWay



This work was supported by The UKRI Strategic Priorities Fund under the EPSRC Grant EP/T001569/1, particularly the "Tools, Practices and Systems" theme within that grant, and by The Alan Turing Institute under the EPSRC grant EP/N510129/1.

Esther Plomp, Malvika Sharan, Kirstie Whitaker 2020, The Turing Way: Reproducible, inclusive, collaborative data science - Poster, <https://doi.org/10.5281/zenodo.4263403>



The Turing Way is an open source community-driven guide to reproducible, ethical, inclusive and collaborative data science. Our goal is to provide all the information that data scientists in academia, industry, government and the third sector need at the start of their projects to ensure that they are easy to reproduce and reuse at the end.

**TOO EASY NOT TO DO**