

DeepCCZ nodule size and epizoan documentation

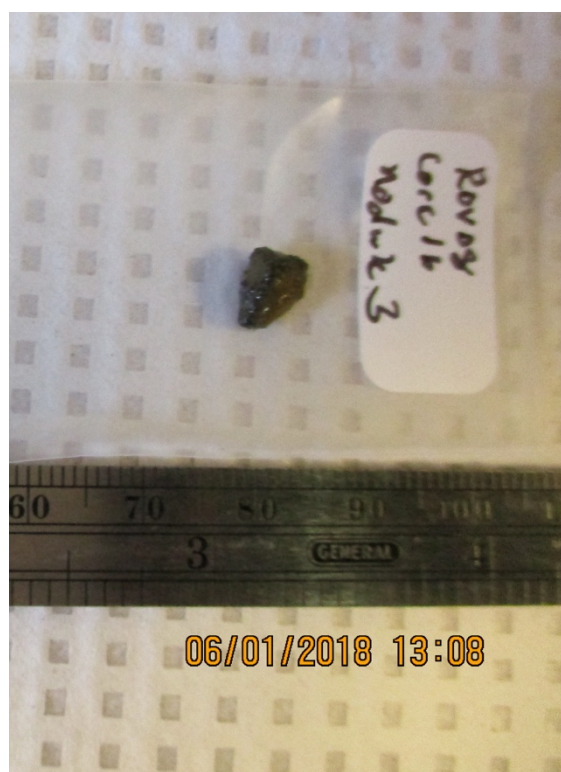
Nodule ID	DC.R08C16.Nod1
Where collected	APEI 4; 7.0363 N 149.9395 W; 5040.3 m
When collected (HST)	1 June 2018
Dimensions (cm)	1.2 x 0.9 (1.1 to nubbin) x 0.8
Depth in sediment (cm)	surface
DNA extract(s) used, ng/μL and g extracted	1.46 ng/ μ L 0.5409 g
DNA extract(s) not used, ng/μL and g extracted	N/A

- Total mass 0.6548 g



Nodule ID	DC.R08C16.Nod3
Where collected	APEI 4; 7.063 N 149.9395 W; 5040.3 m
When collected (HST)	1 June 2018
Dimensions (cm)	0.7 x 0.8 x 0.5
Depth in sediment (cm)	0-0.5
DNA extract(s) used, ng/μL and g extracted	0.221 ng/ μ L 0.1398 g (whole nodule)
DNA extract(s) not used, ng/μL and g extracted	N/A

- Not rinsed with sterile seawater



Nodule ID	DC.R08C16.Nod4
Where collected	APEI 4; 7.0363 N 149.9395 W; 5040.3 m
When collected (HST)	1 June 2018
Dimensions (cm)	2.5 x 2.2 x 1.8
Depth in sediment (cm)	0-0.5
DNA extract(s) used, ng/μL and g extracted	4.80 ng/ μ L 0.4426 g; 0.677 ng/ μ L 0.4569 g; 0.604 ng/ μ L 0.4718 g
DNA extract(s) not used, ng/μL and g extracted	N/A

- Seemed to have solid core when fragmenting for extraction



Nodule ID	DC.R08C16.Nod5
Where collected	APEI 4; 7.0363 N 149.9395 W; 5040.3 m
When collected (HST)	1 June 2018
Dimensions (cm)	1.3 x 0.8 x 0.45
Depth in sediment (cm)	0.5-1
DNA extract(s) used, ng/μL and g extracted	9.34 ng/ μ L 0.4080 g (entire nodule)
DNA extract(s) not used, ng/μL and g extracted	N/A

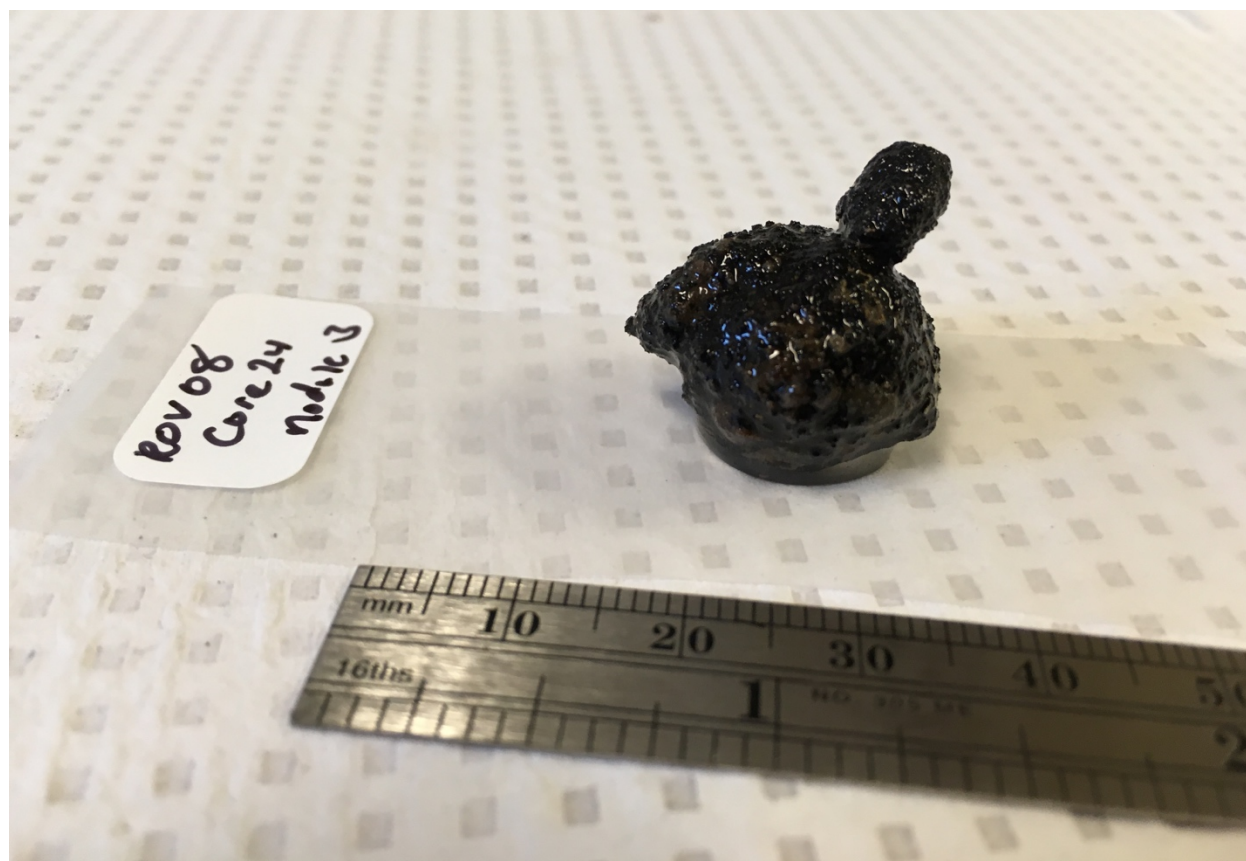


Nodule ID	DC.R08C24.Nod1
Where collected	APEI 4; 7.0363 N 149.9395 W; 5040.4 m
When collected (HST)	1 June 2018
Dimensions (cm)	0.7 x 0.4 x 0.5
Depth in sediment (cm)	0.5-1
DNA extract(s) used, ng/μL and g extracted	1.14 ng/ μ L 0.1094 g (whole nodule)
DNA extract(s) not used, ng/μL and g extracted	N/A



Nodule ID	DC.R08C24.Nod3
Where collected	APEI 4; 7.0363 N 149.9395 W; 5040.4 m
When collected (HST)	1 June 2018
Dimensions (cm)	1.8 (2.4 to nose) x 2.2 x 1.8
Depth in sediment (cm)	1-5
DNA extract(s) used, ng/μL and g extracted	1.19 ng/ μ L 0.4086 g; 0.819 ng/ μ L 0.5151 g
DNA extract(s) not used, ng/μL and g extracted	N/A

- Total mass 5.74 g



Nodule ID	DC.R08C24.Nod4
Where collected	APEI 4; 7.0363 N 149.9395 W; 5040.4 m
When collected (HST)	1 June 2018
Dimensions (cm)	2.2 x 1.3 x 1.4
Depth in sediment (cm)	1-5
DNA extract(s) used, ng/μL and g extracted	1.58 ng/ μ L 0.4728 g; 0.828 ng/ μ L 0.5309 g; 1.36 ng/ μ L 0.4885 g
DNA extract(s) not used, ng/μL and g extracted	N/A



Nodule ID	DC.R09BB.Nod1
Where collected	APEI 4; 6.9876 N 149.9123 W; bottom depth not recorded
When collected (HST)	2 June 2018
Dimensions (cm)	6.2 x 4.5 x 3.9
Depth in sediment (cm)	N/A
DNA extract(s) used, ng/μL and g extracted	0.232 ng/ μ L 0.5069 g; 0.767 ng/ μ L 0.6554 g
DNA extract(s) not used, ng/μL and g extracted	0.127 ng/ μ L 0.6701 g

- BioBox sample
- Not rinsed except for BioBox agitation

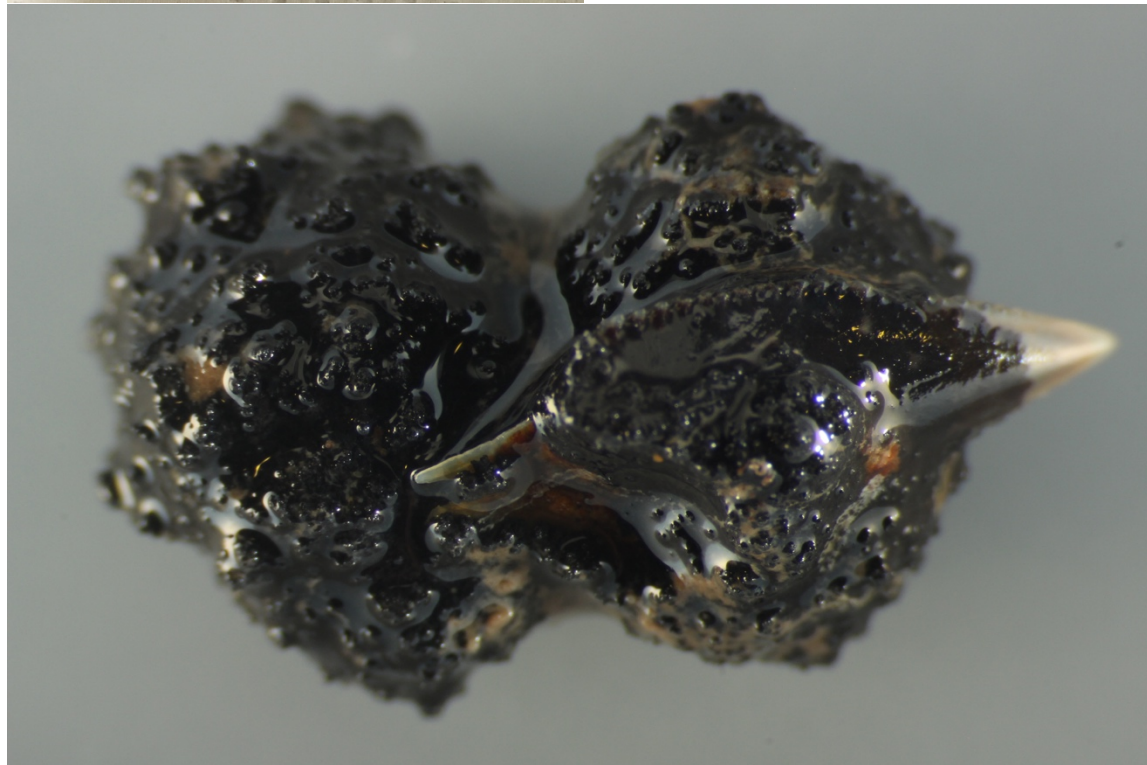
No photographs available

Nodule ID	DC.R09C08.Nod1
Where collected	APEI 4; 6.9876 N 149.9123 W; bottom depth not recorded
When collected (HST)	2 June 2018
Dimensions (cm)	5 x 3.5 x 2.7
Depth in sediment (cm)	0-4
DNA extract(s) used, ng/μL and g extracted	2.49 ng/ μ L 0.5505 g
DNA extract(s) not used, ng/μL and g extracted	0.135 ng/ μ L 0.6090 g

- Small worm(?) in pulverized nodule; avoided in extractions



Nodule ID	DC.R09C08.Nod2
Where collected	APEI 4; 6.9876 N 149.9123 W; bottom depth not recorded
When collected (HST)	2 June 2018
Dimensions (cm)	1.4 x 0.8 x 0.9
Depth in sediment (cm)	0-5 (approximate – top sediments were homogenized)
DNA extract(s) used, ng/μL and g extracted	0.309 ng/ μ L 0.3827 g; 0.286 ng/ μ L 0.5381 g (whole nodule except for shark tooth)
DNA extract(s) not used, ng/μL and g extracted	N/A



Micrograph thanks to Helena Wiklund

Nodule ID	DC.R12C16.Nod1
Where collected	APEI 4; 6.9875 N 149.9327 W; 5008.6 m
When collected (HST)	6 June 2018
Dimensions (cm)	4 x 3.8 x 3.5
Depth in sediment (cm)	surface
DNA extract(s) used, ng/μL and g extracted	0.799 ng/ μ L 0.6361 g; 0.317 ng/ μ L 0.6336 g
DNA extract(s) not used, ng/μL and g extracted	0.0540 ng/ μ L 0.5473 g

- Removed sponge before fragmenting for extraction
- One used extraction had stringy biomass bit included



Epizoan tentatively identified as a sponge

Nodule ID	DC.R13BB.Nod1
Where collected	APEI 1; 11.2752 N 153.7445 W; 5240.6 m
When collected (HST)	9 June 2018
Dimensions (cm)	5.3 x 5.8 x 3.0
Depth in sediment (cm)	N/A
DNA extract(s) used, ng/μL and g extracted	0.650 ng/ μ L 0.6683 g; 0.449 ng/ μ L 0.6049 g
DNA extract(s) not used, ng/μL and g extracted	0.162 ng/ μ L 0.5224 g

- BioBox sample
- Pronounced tan veining on interior



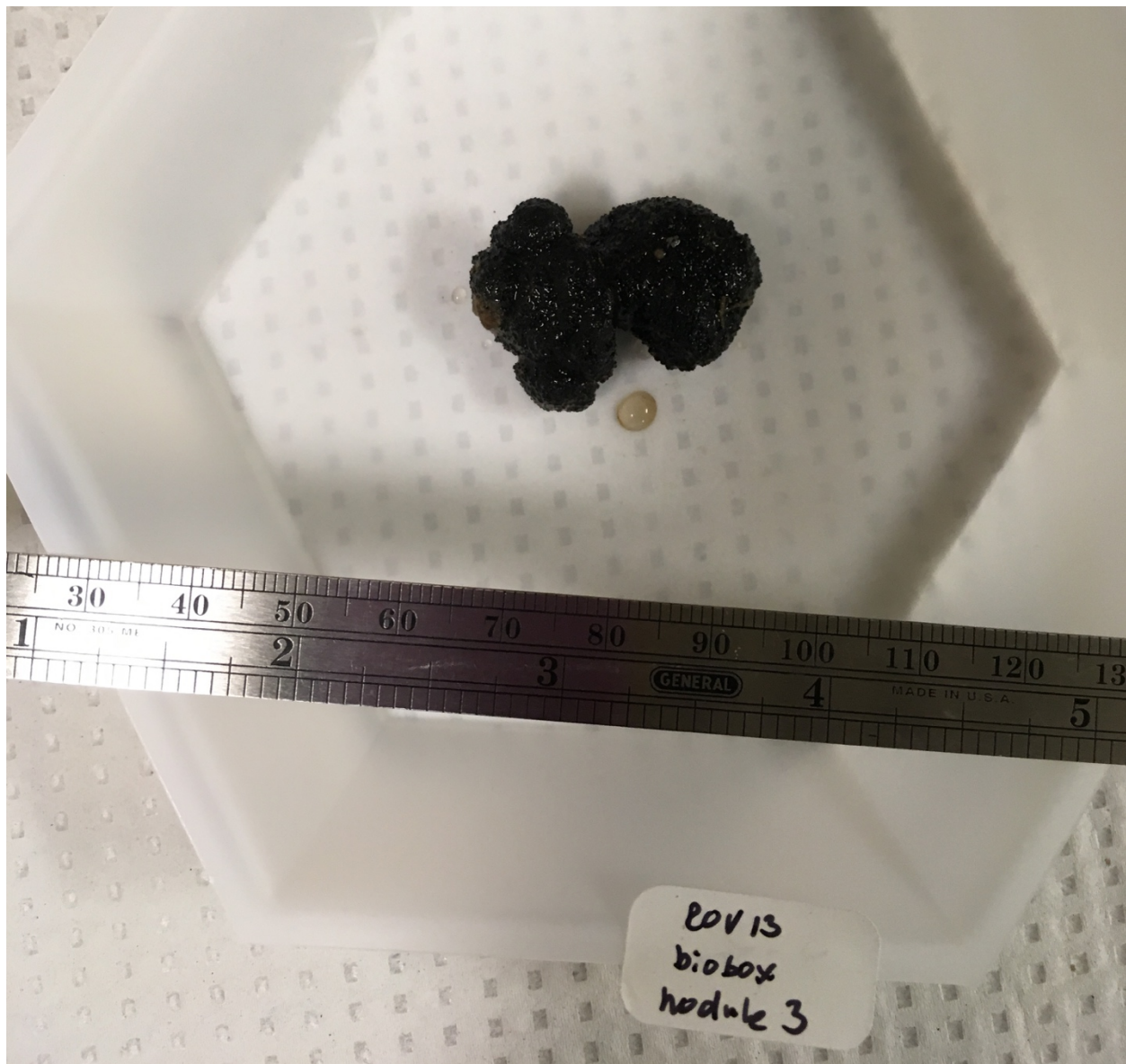
Nodule ID	DC.R13BB.Nod2
Where collected	APEI 1; 11.2752 N 153.7445 W; 5240.6 m
When collected (HST)	9 June 2018
Dimensions (cm)	6.2 x 3.3 x 1.7
Depth in sediment (cm)	N/A
DNA extract(s) used, ng/μL and g extracted	0.714 ng/ μ L 0.5541 g; 1.21 ng/ μ L 0.5957 g
DNA extract(s) not used, ng/μL and g extracted	N/A

- BioBox sample



Nodule ID	DC.R13BB.Nod3
Where collected	APEI 1; 11.2752 N 153.7445 W; 5240.6 m
When collected (HST)	9 June 2018
Dimensions (cm)	3.1 x 2.2 x 1.4
Depth in sediment (cm)	N/A
DNA extract(s) used, ng/μL and g extracted	2.06 ng/ μ L 0.5045 g; 1.42 ng/ μ L 0.5039 g; 1.76 ng/ μ L 0.4971 g; 1.49 ng/ μ L 0.5009 g; 0.617 ng/ μ L 0.5076 g; 1.35 ng/ μ L 0.5078 g
DNA extract(s) not used, ng/μL and g extracted	N/A

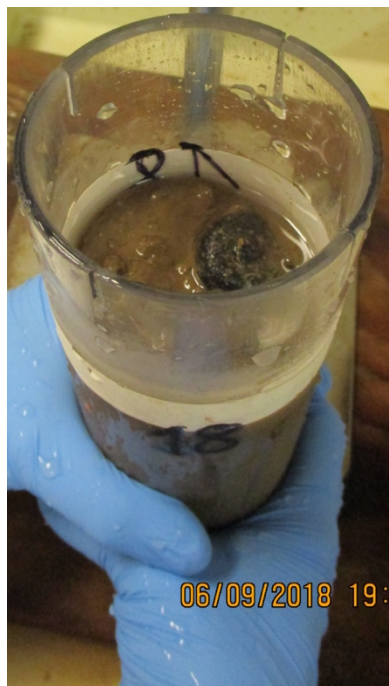
- BioBox sample



Nodule ID	DC.R13C09.Nod1
Where collected	APEI 1; 11.2752 N 153.7445 W; 5240 m
When collected (HST)	9 June 2018
Dimensions (cm)	3.8 x 2.8 x ~2
Depth in sediment (cm)	Surface (~0-1)
DNA extract(s) used, ng/μL and g extracted	0.985 ng/ μ L 0.5595 g; 0.460 ng/ μ L 0.5851 g
DNA extract(s) not used, ng/μL and g extracted	N/A



Nodule ID	DC.R13C18.Nod1
Where collected	APEI 1; 11.2752 N 153.7445 W; 5240 m
When collected (HST)	9 June 2018
Dimensions (cm)	3.7 x 2.9 x 1.7
Depth in sediment (cm)	Surface (~0-1)
DNA extract(s) used, ng/μL and g extracted	0.522 ng/ μ L 0.5882 g; 0.308 ng/ μ L 0.6296 g; 1.12 ng/ μ L 0.5109 g
DNA extract(s) not used, ng/μL and g extracted	N/A



Nodule ID	DC.R14BB.Nod1
Where collected	APEI 1; 11.2526 N 153.6061 W; 5206.1 m
When collected (HST)	11 June 2018
Dimensions (cm)	6.4 x 6.2 x 3.1
Depth in sediment (cm)	N/A
DNA extract(s) used, ng/μL and g extracted	0.845 ng/ μ L 0.5945 g; 0.200 ng/ μ L 0.5124 g
DNA extract(s) not used, ng/μL and g extracted	0.0720 ng/ μ L 0.6169 g

- BioBox sample



Nodule ID	DC.R14BB.Nod2
Where collected	APEI 1; 11.2526 N 153.6061 W; 5206.1 m
When collected (HST)	11 June 2018
Dimensions (cm)	6.8 x 5.6 x 2.5
Depth in sediment (cm)	N/A
DNA extract(s) used, ng/μL and g extracted	0.611 ng/ μ L 0.5032 g; 4.28 ng/ μ L 0.5136 g; 3.80 ng/ μ L 0.5000 g; 0.438 ng/ μ L 0.5045 g
DNA extract(s) not used, ng/μL and g extracted	0.134 ng/ μ L 0.5111 g; 0.170 ng/ μ L 0.5035 g

- BioBox sample



Nodule ID	DC.R14C27.Nod1
Where collected	APEI 1; 11.2526 N 153.6061 W; 5206.1 m
When collected (HST)	11 June 2018
Dimensions (cm)	4.4 x 4.2 x 2.0
Depth in sediment (cm)	0-3 (may have been pushed down in core collection)
DNA extract(s) used, ng/μL and g extracted	1.65 ng/ μ L 0.7147 g; 0.288 ng/ μ L 0.6212 g
DNA extract(s) not used, ng/μL and g extracted	N/A

