

REPORT

CITIZEN SCIENCE DAY, Brussels, Saturday December 1st, 2018



1. Table of contents

2. INTRODUCTION	3
3. MAIN STATISTICS ABOUT THE PARTICIPANTS.....	4
4. SUMMARY OF THE FEEDBACK FROM THE PARTICIPANTS – SURVEY AND ACKNOWLEDGENTS	5
5. PICTURES.....	6
6. LIST OF SPEAKERS AND TALKS AT THE CITIZEN SCIENCE DAY.....	7
7. POSTER « CITIZEN SCIENCES (CS) AT THE RBINS : RECENT AND RECURRENT COLLABORATION ».....	8
8. SURVEY SUBMITTED TO THE PARTICIPANTS	9

2. Introduction

The Royal Belgian Institute of Natural Sciences (RBINS) has an extensive and well established collaboration with volunteers in almost all its directorates (Taxonomy & Phylogeny, Public Services, Natural Environment, Scientific Heritage Service, Earth and History of Life). The nature of the activities of the «Citizen Scientists» (CSts) is really varied. With their help, the RBINS complements the lack of expertise in some research fields. They also valorize the scientific collections by studying them, as a result improving collection management of the collections and their accessibility.

The goal of the « Citizen Science Day » was two fold: 1) highlight the work of the volunteers during a day of meeting and sharing experiences and 2) To show the diversity of projects, types of collaborations and areas of research that they contribute to within the Institute. They were invited to attend presentations and to exchange on their practices, expectations and wishes during a lunch, a movie and finally a cocktail.

3. Main statistics about the participants

In total 64 persons attended the « Citizen Science Day » on the 88 registered. Among them, 37 were Dutch speakers (58%) and 27 were French speakers (42%). Moreover, 30 % of the participants were women.

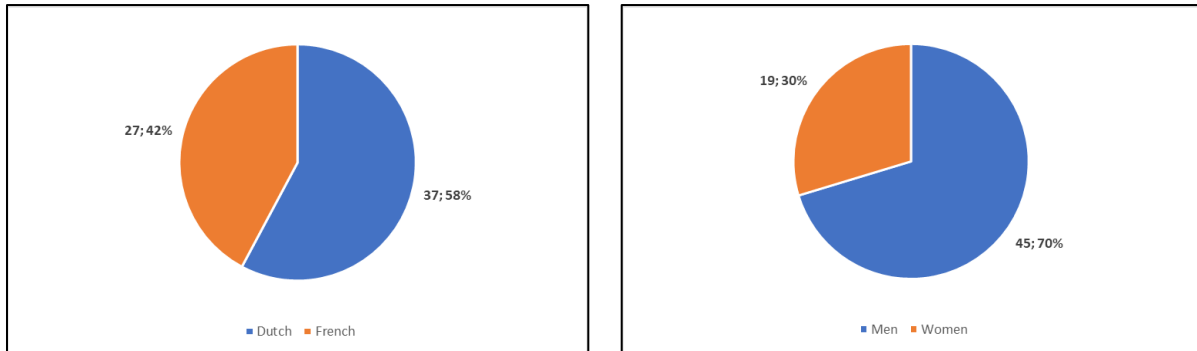


Figure 1 : Number of participants by language spoken and gender.

A survey was submitted to the participants during the breaks and 23 forms were collected. Among them, 14 were Dutch speakers (61%) and 9 were French speakers (39%). Moreover, 17 % of the participants who completed the survey were women. The majority of the participants who completed the survey are more than 50 years old.

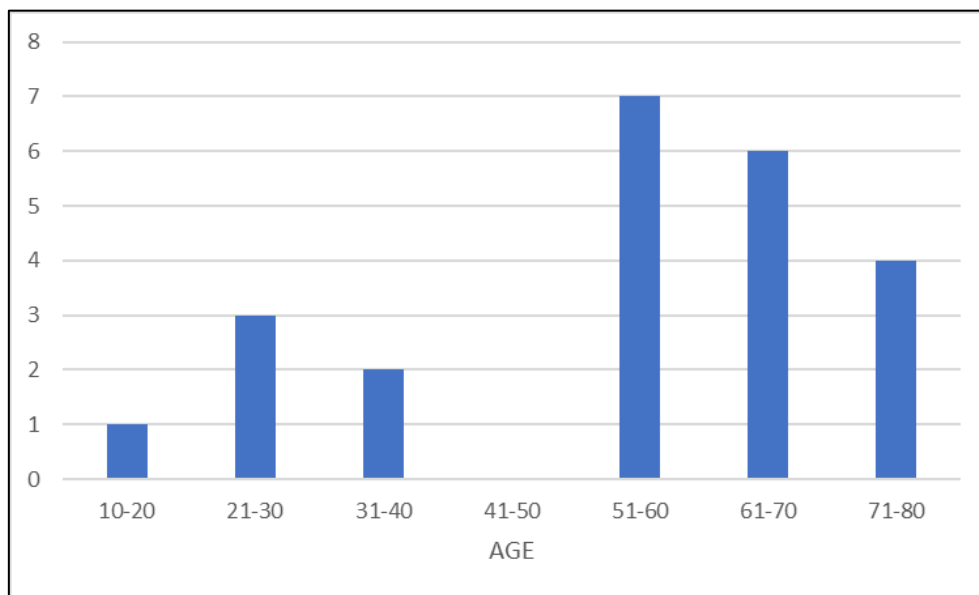


Figure 2 : Age of the participants who completed the survey.

4. Summary of the feedback from the participants – Survey and acknowledgments

A survey was submitted to the participants. To the question « **What is your link with the Institute ?** », 14 participants have responded volunteer, 5 scientific collaborator of the Institute and 4 « other » (SRBM, SBM, LidKBVC). The majority of them are in link with the Institute since less than 10 years, but 4 participants have been working with the Institute for more than 20 years (and 3 between 10 and 20 years). Among them, 48% are member of a company or an association hosted by the Institute. These companies and associations are :

- Société royale belge d'Entomologie / Koninklijke Belgische Vereniging voor Entomologie
- Société Royale Belge de Malacologie (SRBM)
- KBVE
- KBVC

To the question « **Did you like this Citizen Science Day ?** », all of them have responded « **YES** ». The main reasons why they appreciated the Citizen Science Day were :

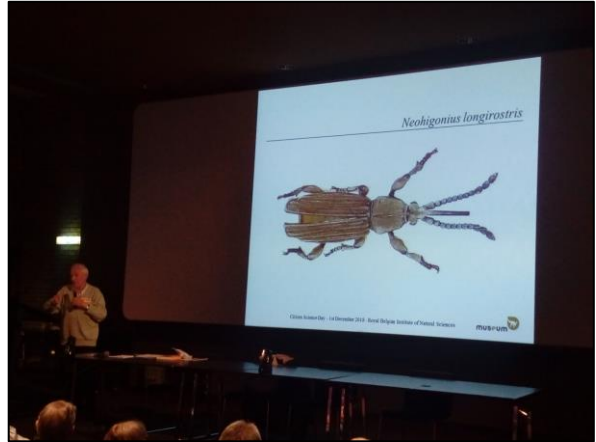
- the quality and the variety of the presentations ;
- the food provided ;
- the projection of the movie « Giants of the Antarctic Deep » ;
- the possibility to know and meet the other volunteers.

To the question « **Would you find it useful to repeat this type of event?** », all of them have responded « **YES** ». Thirteen of the participants want to have this type of event every 2 years, 8 of them once a year, and 2 of them twice a year.

To the question « **Do you have any suggestions or remarks about the organization and the event ?** », the participants have responded :

- good organisation ;
- one participant proposes to do the presentations in English to attract more people;
- make more advertising to attract more new volunteers ;
- have the possibility to visit the laboratories ;
- the presentations were longer than expected ;
- offer a breakfast for the participants who did a long journey to come ;
- be more varied in the subjects (for example, any presentation on the paleontology) ;
- lack of information about how to become a volunteer, the contact persons and how to consult the collections.

5. Pictures



6. List of speakers and talks at the Citizen Science Day

LIST OF SPEAKERS AND TALKS AT THE CITIZEN SCIENCE DAY 1 DECEMBER 2018

09:30 Welcome & Coffee

10:00 – 10:15 "Welkomstwoord - Mot de bienvenue" door/par Thierry Backeljau

10:15 – 10:30 "Taxonomie van Phasmatodea (wandelende takken en aanverwanten)"
door Joachim Bresseel

10:35 – 10:50 "IRSNB et membres de la Société Royale Belge de Malacologie - un partenariat malacologique fructueux" par Christiane Delongueville, Roland Houart et Roland Scaillet

10:55 – 11:10 "De Koninklijke Belgische Vereniging voor Conchyliologie en KBIN, een duet" door Nathal Severijns

11:15 – 11:35 Coffee break (VIP room)

11:40 – 12:10 "Une seconde vie" par Jacques Goossens & "Une partie de mon temps libre"
par Nicole Maes

12:15 – 12:30 "Onderzoek naar fraude en vervalsingen met schelpen en schelpgerelateerde
objecten in natuur - en kunsthistorische collecties" door Roland De Prins

12:30 – 13:30 Lunch

13:30 – 13:45 "Du fond de la mer au fond du conservatoire" par Alex Vanhaelen

13:50 – 14:05 "Digitalisatie van collecties door vrijwilligers van Binco" door Martijn Van Roie

14:10 – 14:25 "XperiBird: un projet scientifique qui donne des ailes aux écoles" par Kristina Articus

14:30 – 14:50 Coffee break (VIP room)

15:00 – 16:00 Projection du film / Vertoning van de film "Giants of the Antarctic Deep" (version
anglaise non sous-titrée / Engelse versie zonder ondertitels) ou visite libre au museum / of vrij
bezoek aan het museum

16:00 – 18:00 Cocktail/Receptie !



7. Poster « Citizen Sciences (CS) at the RBINS : Recent and recurrent collaboration »

CITIZEN SCIENCES (CS) AT THE RBINS : RECENT AND RECURRENT COLLABORATION

The Royal Belgian Institute of Natural Sciences (RBINS) has an extensive and well established collaboration with volunteers in almost all its disciplines (Taxonomy & Phylogeny, Public Services, Natural Environment, Scientific Heritage Service, Earth and History of Life). The nature of the activities of the Citizen Science (CS) is really varied. With past help, the RBINS complements the lack of expertise in some research fields. They also valorize the scientific collection by studying them, as a result, **improving collection management and accessibility of the collections**. This poster shows some of the most recent projects where the CSs are active and how important their role is to the RBINS.

MALACOLOGICAL - INVERTEBRATES

Contributions to Taxonomy
CSs study and describe specimens of **beetles and spiders** (specialist groups) and **insects** (generalist groups) from all over (local and international) and are volunteers in formal field specimen collections.



Field and fielders with mobile shells, shell related objects and shells
Study and collect of **shells and shell related objects** (**land and lakes**) in natural museums, private collections and ethnographic collections and shells; improving collection management and management of databases.



Contributions to taxonomy of population distribution
Identification of **European marine molluscs** (Gastropoda, Bivalvia) in the Mediterranean from the Atlantic to the Mediterranean. CSs provide technical support in laboratories for stakeholders.



306-314 (B) Mollusca (Invertebrate in the Diner) project
Make an inventory of the **terrestrial and freshwater molluscs** from the 306-314 (B) Mollusca (Invertebrate in the Diner) project for **suburban and rural** species and contribute to species.



Contributions to taxonomy of population distribution
CSs and researchers **improve** **inventories** for DNA research and morphology to study the response of populations and communities to urbanization.



"Researching project" in growing our knowledge and expertise of species inventories
CSs and professionals describe new species of **invertebrates** (Mollusca, Gastropoda, Bivalvia) and **invertebrates** (Schwamm, Bryozoa, J, study collections, data, analysis, etc).



ENTOMOLOGY

Contributions to Taxonomy
CSs study and describe specimens of **beetles and spiders** (specialist groups) and **insects** (generalist groups) from all over (local and international) and are volunteers in formal field specimen collections.



Contributions to Collection Management
CSs are involved in sorting, mounting and archiving specimens, making them available for study.



Contributions to field sampling and international and exotic material
CSs are involved in **sampling** specimens in big areas (rural areas, urban areas, in nature, forests, parks, etc), and contribute to the collection.



Contributions to applications of type specimens (partially) for crowd sourcing
CSs make high resolution scanned pictures from type specimens and put them on a website (RBINS) for identification using an on-line crowd sourcing tool. After validation, the pictures are put online.



Contributions to online open databases and online field data
CSs receive the field data of the **invertebrates** (Mollusca, Gastropoda, Bivalvia) and use it for both researchers and CSs for their own projects, publications, etc.



Education & sensitization to the role of a crowd sourcing
CSs help organizing **workshops** and **workshops** on insects for a broad audience. One of the top activities is the **Workshop on insects** (partially) and **workshops** on insects (partially) and **workshops** on insects (partially). During this week, all over Belgium CSs are informed on the role of a crowd sourcing.



GEOLOGY & PALEONTOLOGY

Contributions to paleontology and geology
CSs are collecting **vertebrate fossils**, **plant fossils** and **invertebrate fossils** (mollusks, brachiopods, bryozoans, etc) from all over (local and international) and are volunteers in formal field specimen collections.



Collecting paleontological data and samples from temporary excavations
CSs provide information about temporary excavations such as excavations for new buildings or roads, make a description of the outcome to be included in the report for the supply of the material services for the collection.



Contributions to fossil preparation
CSs participate in the preparation and **restoration** of **fossils** (vertebrate remains, but recently outlasted specimens as well) for more from the field collection. The fossils are prepared and are included in the RBINS or by the CSs at home (not).



Preparation of the RBINS reference collection of fish skeletons
CSs collect and deliver **fish skeletons** or **corals of mollusks**, that are prepared and deposited in the collection. The same for comparative purposes to study fish remains from archaeological or paleontological sites.



BEIJERIAN BIRD WINGING CENTER

Field site (Belgian Winging Scheme)
Back in 2007 (RBINS) RBINS aims to improve the collection of quality data on birds. The **Beijerian Bird Winging Scheme** (BWS) is a **well-organized** **citizen science** project. CSs, professional scientists, CSs, professional scientists, etc. participate in training activities and develop research programs focused on the conservation of birds.



Doing it Together Science (DITS) 2018 = European projects supporting RBINS CS activities for the DITS 2018 project
Good science Good science Good science



Open Field
Open Field is an educational project that aims to distribute real birds that are collected by CSs and deposited in the RBINS. CSs provide their **observations** on the website <http://www.openfield.be>.



For any questions, please write us at citizenscience@naturalsciences.be



Doing it Together Science, 2018

8. Survey submitted to the participants

CITIZEN SCIENCE DAY 2018 – Survey

Age :

Gender : F H X

Country:

What is your link with the Institute? Are you:

Volunteer Scientific collaborator with contract Other :

If yes, since when ? < 1 year 1-5 years 5-10 years 10-20 years >20 years

Are you a member of a company or association hosted by the RBINS?

YES NO X

If yes, which one and in which area do you collaborate?

.....

Did you appreciate these Citizen Science Day ?

YES NO X

What did you prefer?

.....

Would you find it useful for this type of event to happen again? YES NO X

How many times ? Once a year twice a year Every two years

Do you have any suggestions or remarks about the organization and the event?

.....