

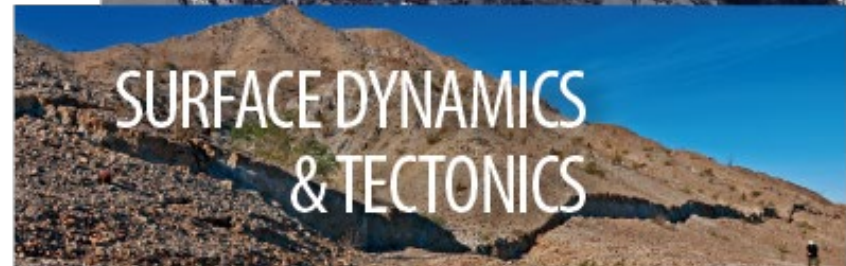
# EPOS

EUROPEAN PLATE OBSERVING SYSTEM

## EPOS Satellite Data Thematic Core Service

Michele Manunta (CNR, Italy)  
EPOS TCS Satellite Data Coordinator

OpenAIRE Week 2020  
16 October 2020



## EPOS is a **long-term plan for the integration** of research infrastructures for solid Earth Science in Europe

EPOS integrates the **existing (and future)** advanced European facilities into **a single, distributed, sustainable infrastructure** taking full advantage of new **e-science opportunities**



25 COUNTRIES

Austria, Belgium, Bulgaria, Czech Republic, Denmark, Finland, France, Germany, Greece, Hungary, Iceland, Ireland, Italy, The Netherlands, Norway, Poland, Portugal, Romania, Slovakia, Slovenia, Spain, Sweden, Switzerland, Turkey, United Kingdom

5 INTERNATIONAL ORGANIZATIONS

Orfeus, EMSC, EUREF, INTERMAGNET, EuroGeoSurveys

256 NATIONAL RESEARCH INFRASTRUCTURES

4939 SEISMIC STATIONS

2272 GPS RECEIVERS

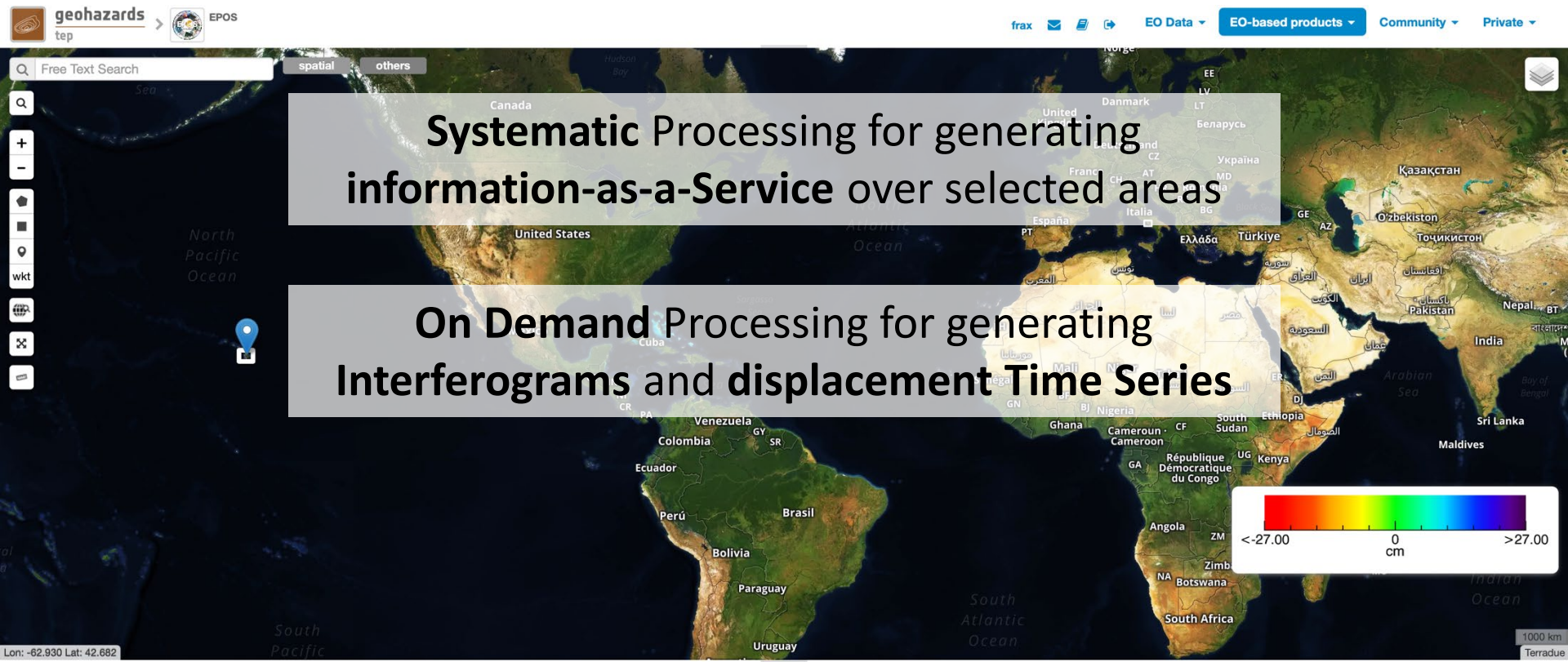
464 TB SEISMIC DATA

118 LABORATORIES

828 INSTRUMENTS

Several PetaBytes of solid Earth Science data will be available

Several thousands of users expected to access the infrastructure



Current search result

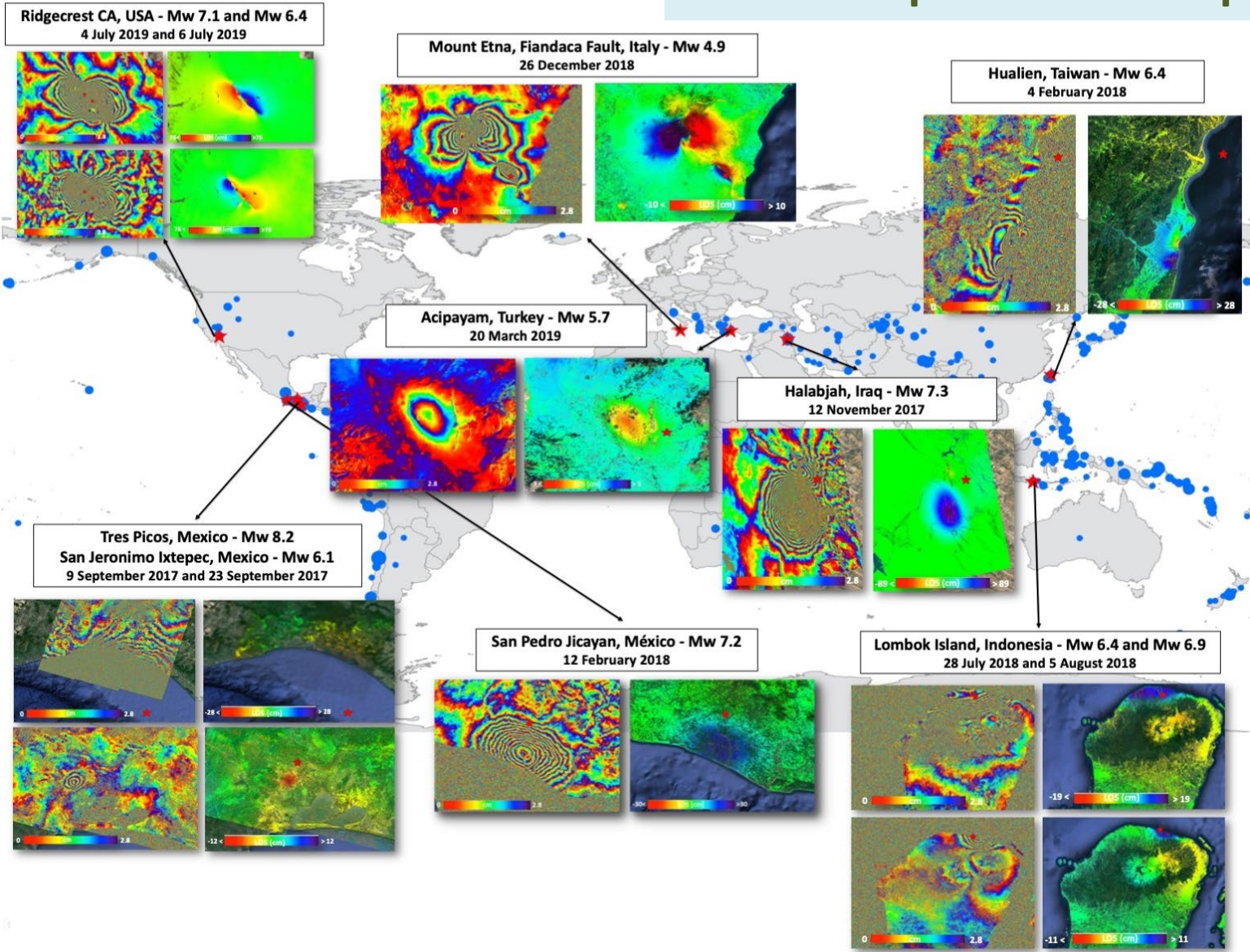
Result for OpenSearch query over type ... Total results 3

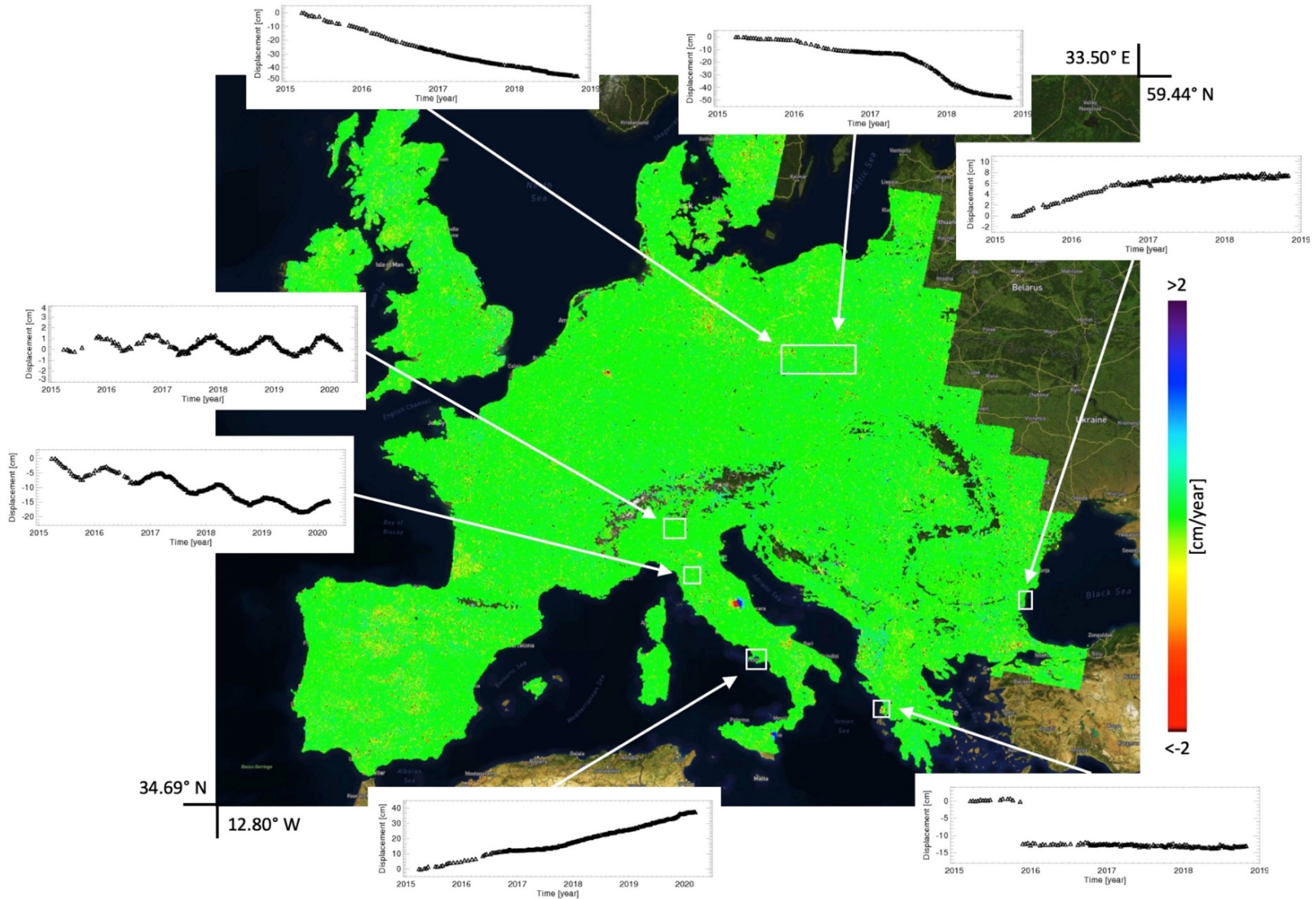
InW_GNR-IREA_20180502S1A_20180508S1B_XVDV
InW_fpacini_20180423S1B_20180505S1B_GOLD_L432
InU_fpacini_20180423S1B_20180505S1B_L432

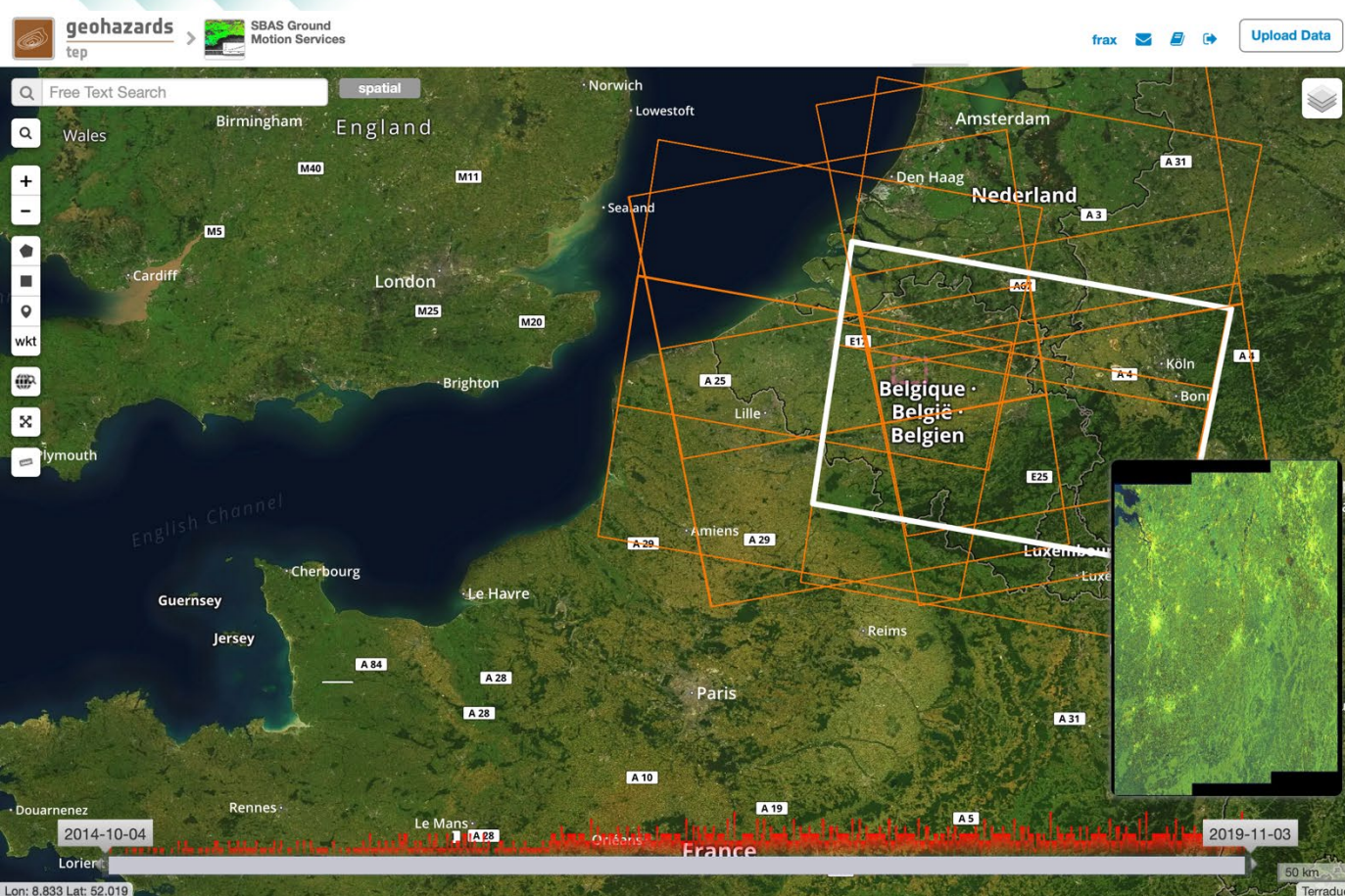
Features Basket Data Packages

Total results 3 | sel.all | Inv.sel. | Remove all | Save

[Station] DTSLOS_foasu_20170831_20191026_Y8J5_BOX [2.16,50.41,5.78,51.36] Flanders, Belgium
DTSLOS_foasu_20170831_20191026_Y8J5
DTS-LOS_CNR-IREA_20150324_20180501_F9P6







## Processing Services

**SBAS Stripmap (GPOD)**  
 id: b4aa0e4a-ebba-42a6-a924-9b36c3dd8117  
 publisher: Grid Processing on Demand  
 version: 1.0.0

The InSAR Small Baseline Subsets (SBAS) algorithm has been developed by IREA-CNR for monitoring temporal evolution of surface deformations and to generate interferograms stacks as well. The InSAR Parallel-SBAS (P-SBAS) algorithm version has been integrated on the ESA's Grid Processing On Demand (GPOD) to exploit the available High Performance Computing resources.

Job title \*

Files \*

Bounding Box

Lat \*

Lon \*

Processing Mode :

Cut data over selected AOI

Max Perpendicular Baseline [meters]

Current search result

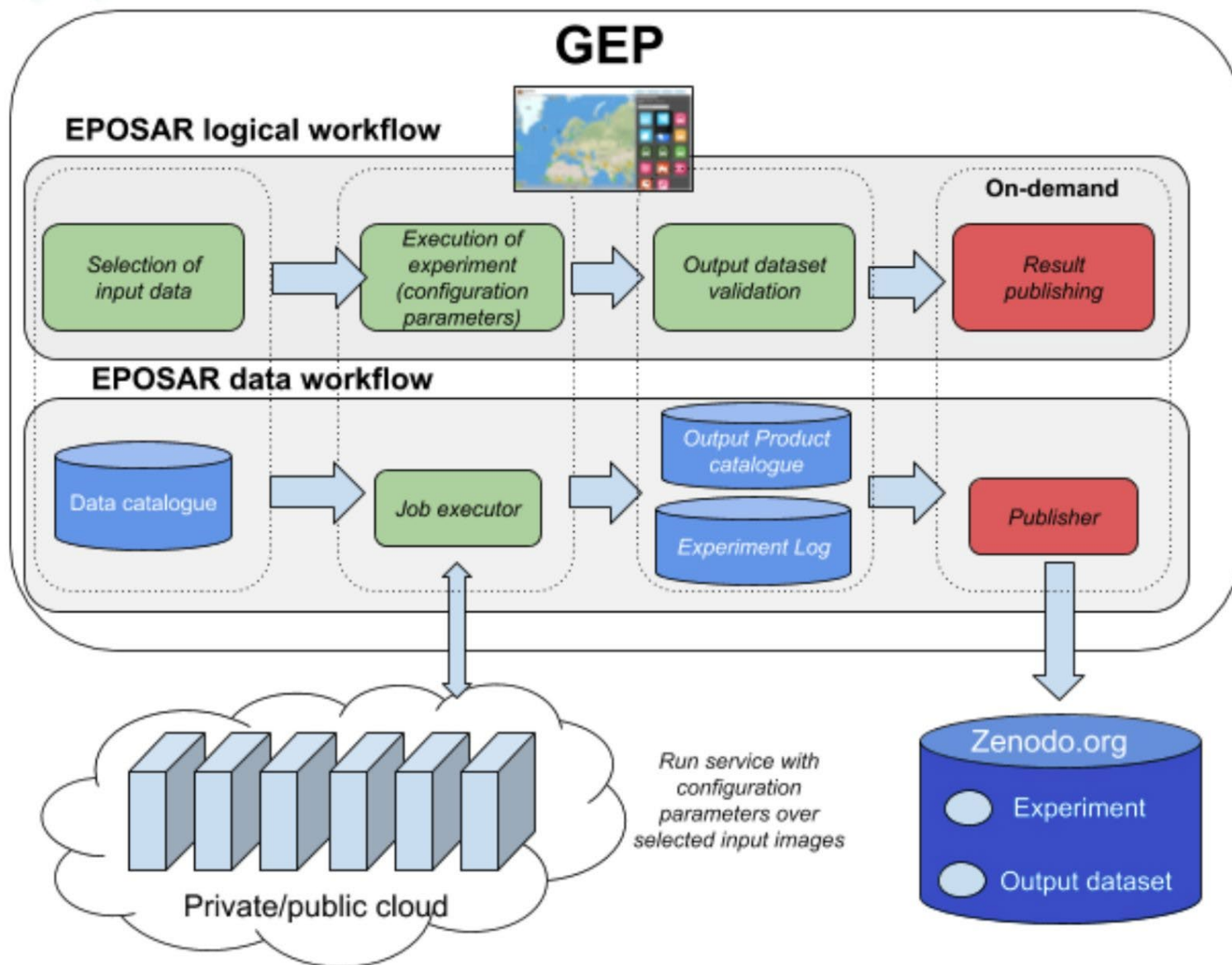
Query results for series insar 1 2 3 ... 23 Total results 1109

	S1A SLC IW_DP L1 37 Thu, 12 Sep 2019 05:50:16 GMT
	S1B SLC IW_DP L1 110 Wed, 11 Sep 2019 05:57:55 GMT
	S1B SLC IW_DP L1 88 Mon, 09 Sep 2019 17:24:19 GMT
	S1B SLC IW_DP L1 88 Mon, 09 Sep 2019 17:23:54 GMT
	S1A SLC IW_DP L1 161 Sun, 08 Sep 2019 17:32:50 GMT

Features Basket Data Packages

Total results 2  sel.all |  inv.sel |  Remove all | Save

	[Station]DTSLOS_feasu_20170831_20191026_Y8J5 BOX [2:-16,60:41,5:78,61:36] Flanders, Belgium
	DTSLOS_feasu_20170831_20191026_Y8J5



geohazards > SBAS Ground Motion Services

Free Text Search  spatial

2014-10-04 2019-11-03

Lon: 4.834 Lat: 49.196

Current search result

Query results for series insar 1 2 3 ... 20 Total results 958

- S1A SLC IW\_DP L1-37 Wed, 30 Oct 2019 05:50:42 GMT
- S1B SLC IW\_DP L1-110 Tue, 29 Oct 2019 05:57:55 GMT
- S1B SLC IW\_DP L1-88 Sun, 27 Oct 2019 17:23:55 GMT
- S1A SLC IW\_DP L1-161 Sat, 26 Oct 2019 17:32:50 GMT
- S1B SLC IW\_DP L1-37 Thu, 24 Oct 2019 05:49:52 GMT

Features Basket Data Packages

Total results 2  sel.all |  inv.sel. |  Remove all |  Save

- [Station] DTSLOS\_fcasu\_20170831\_20191026\_Y8J5 BOX [2:16,50:41.5:78,51:38] Flanders, Belgium
- DTSLOS\_fcasu\_20170831\_20191026\_Y8J5

Processing Services

Bruxelles

Job Info

Name	Bruxelles
Id	a9767bb2-8a5f-4278-99e1-ae8108e0a9e0
Remote Id	e727748e-a444-4826-b9fa-954c444ff432
Processing service	CNR-IREA P-SBAS Sentinel-1 processing on-demand
Service version	1.0.0
Started at	Oct 31st 2019 17:50
Finished at	Oct 31st 2019 17:50
Created by	Francesco Casu
Status/Result Location	<a href="#">📄</a>
Status	Success
Visibility	private
Share	<a href="#">📄</a>

Parameters

Name	Value
1 - S1	https://catalog.terradue.com/sentinel1/series/insar/search?format=json&uid=S1A_IW_SLC_1SDV_20191026T173250_20191028T173317_029633_035FE7_15EC
2 - S1	https://catalog.terradue.com/sentinel1/series/insar/search?format=json&uid=S1B_IW_SLC_1SDV_20191020T173224_20191020T173251_018562_022F94_2F0C
3 - S1	https://catalog.terradue.com/sentinel1/series/insar/search?format=json&uid=S1A_IW_SLC_1SDV_20191014T173250_20191014T173318_029458_0359E8_6253
4 - S1	https://catalog.terradue.com/sentinel1/series/insar/search?format=json&uid=S1B_IW_SLC_1SDV_20191008T173224_20191008T173251_018387_022A34_EA54



## European Plate Observing System

EPOS

 [Subscribe](#)

Research outcomes ▾

Search by title, author, abstract, DOI, orcid...

[SEARCH](#)

[Advanced Search](#)

SUMMARY

**PUBLICATIONS**  
**65**

SOFTWARE  
**2**

OTHER RESEARCH  
**5**

### Recent Publications

[VIEW ALL](#) →

Publication . Article . 2020

[An open data infrastructure for the study of anthropogenic hazards linked to georesource exploitation](#)

[OPEN ACCESS](#)

Authors: Orlecka-Sikora, Beata; Lasocki, Stanisław; Kocot, Joanna; Szepieniec, Tomasz; Grasso, Jean Robert; Garcia-Aristizabal, Alexander; Schaming, Marc; Urban, Pawel; Jones, Glenda; Stimpson, Ian; ...

DOI: [10.1038/s41597-020-0429-3](https://doi.org/10.1038/s41597-020-0429-3) 

# EPOS: a single, pan-European distributed RI

