



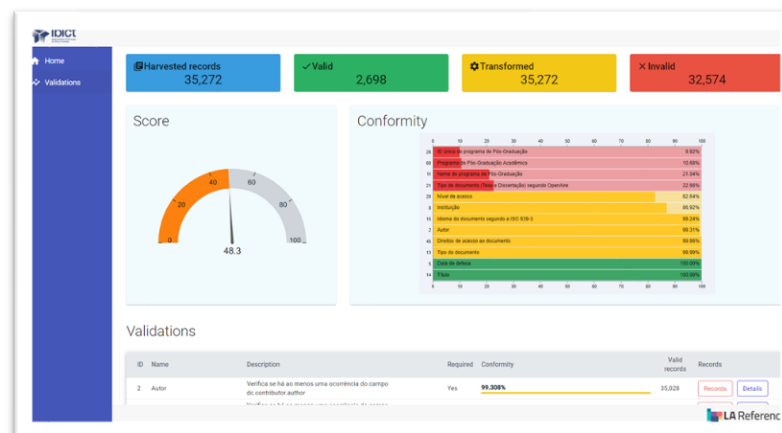
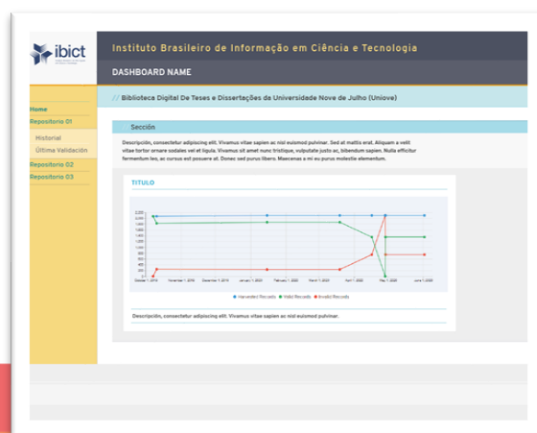
LA REFERENCIA AGREGATOR OPENAIRE´S SERVICES INTEGRATION

Lautaro Matas – LA Referencia

OpenAIRE Week: OpenAIRE for Content Providers

LA REFERENCIA REPOSITORY DASHBOARD

- An alpha version of a Dashboard for LA Referencia repository managers is already available. It integrates the LR Harvester validator results and is ready to consume and present Open Broker API.
- The production version of LA Referencia Dashboard will run at national level, querying and delivering services from the national level (validation), the regional level (statistics) and the OpenAIRE level (broker).



This screenshot shows a detailed table of validation results. The table has columns for ID, Name, Description, Required, Conformity, Valid records, and Records. Each row includes a progress bar indicating the conformity percentage. The 'Records' column contains links for 'Records' and 'Details' for each validation rule.

ID	Name	Description	Required	Conformity	Valid records	Records
2	Autor	Verifica se há ao menos uma ocorrência do campo do contributor.author	Yes	99.308%	35,028	Records Details
3	Currículo Letras do autor	Verifica se há ao menos uma ocorrência do campo do contributor.author.letras	No	0.000%	0	Records Details
4	ID Letras do Orientador1	Verifica se há ao menos uma ocorrência do campo do contributor.advisor.1.letras	No	0.000%	0	Records Details
5	Data de defesa	Deve existir ao menos uma data válida de acordo com a norma ISO 8601	Yes	100.000%	35,272	Records Details
6	Abstract	Verifica se há ao menos uma ocorrência do campo do description.abstract*	No	73.268%	25,843	Records Details
7	Agência / Instituição de fomento	Verifica se já há ao menos uma ocorrência do campo do identifier.sponsorship	No	7.499%	2,645	Records Details
8	Instituição	Verifica se há ao menos uma ocorrência do campo do publisher.name	Yes	86.924%	30,660	Records Details
9	País da instituição	Verifica se há ao menos uma ocorrência do campo do publisher.country	No	0.000%	0	Records Details
10	Faculdade, Instituto ou departamento	Verifica se há ao menos uma ocorrência do campo do publisher.department	No	0.000%	0	Records Details
11	Nome do programa de Pós-Graduação	Verifica se há ao menos uma ocorrência do campo do publisher.program	Yes	21.037%	7,420	Records Details

OPENAIRE GRAPH API INTEGRATION

LA Referencia
Red de repositorios de acceso abierto a la ciencia

Inicio Institucional Nodos Estadísticas Cosechas Servicios Contacto Lenguaje Entrar

Buscar / Functional Properties (acid an... / Descripción

[Citar](#)
[Describir](#)
[Enviar este por Correo electrónico](#)
[Exportar Registro](#)
[Agregar a favoritos](#)

SIMILARES EN LA REFERENCIA

Lactic acid bacteria isolated from bovine mammary microbiota: Potential allies against bovine mastitis
por: Bouchard, Damien S.
Publicado: (2015)

Short Communication: Effect of Timing of Introduction to Pasture Post Calving and Supplementation with Saccharomyces cerevisiae on Milk Fatty Acid Profiles in Early Lactation Dairy Cows
por: Pierce, Karina Mary
Publicado: (2013)

Fatty acid intake and rumen fatty acid composition is affected by pre-grazing herbage mass and daily herbage allowance in Holstein dairy cows
por: Palladino, Rafael Alejandro
Publicado: (2014)

Growth, blood metabolites and hormones in calves fed diets with different amounts of energy and protein during the pre- or post-weaning periods
por: Fernández, H. T.
Publicado: (2012)

Milk fatty acid profile from grazing buffaloes fed a blend of soybean and linseed oils
por: Gagliostro, Gerardo Antonio
Publicado: (2015)

Functional Properties (acid and bile tolerance) and antibiotic susceptibility of lactic acid bacteria isolated from newborn calves for the design of a probiotic product

Diarrhea in young calves in dairy farms is one of the main causes of economic losses, morbidity and mortality. The use of probiotic products as feed additives or complements is a novel alternative for the prevention of intestinal syndromes. In order to include beneficial bacteria in the design of a p...

Descripción completa

Autor Principal:	Maldonado, Natalia Cecilia
Otros Autores:	Nader, Maria Elena Fatima
Formato:	artículo
Estado:	Versión publicada
Fecha de Publicación:	2015
País:	Argentina
Institución:	Consejo Nacional de Investigaciones Científicas y Técnicas
Repositorio:	CONICET Digital (CONICET)
Lenguaje:	inglés
OAI Identifier:	oai:ri.conicet.gov.ar:11336/28722
Enlace del recurso:	http://hdl.handle.net/11336/28722
Nivel de acceso:	Acceso abierto
Materia:	BENEFICIAL LACTIC ACID BACTERIA NEWBORN CALVES PROBIOTIC PRODUCTS FECES HOST SPECIFICITY BILE AND ACID TOLERANCE Otras Producción Animal y Lechería Producción Animal y Lechería CIENCIAS AGRÍCOLAS

Acceso abierto

BENEFICIAL LACTIC ACID BACTERIA
NEWBORN CALVES
PROBIOTIC PRODUCTS
FECES
HOST SPECIFICITY
BILE AND ACID TOLERANCE
Otras Producción Animal y Lechería
Producción Animal y Lechería
CIENCIAS AGRÍCOLAS

Core Recommender

También se encuentra en Documentos relacionados

sejo Nacional de Investigaciones Científicas y Técnicas
22

ry Science and Research
rinary-Science-Research/pdf/IJVS-1-104.pdf
00004
0004
les/IJVS-1-104.php
les/IJVS-1-104.pdf
t/detail/2790147535

Descripción OpenAIRE Core Recommender

Metadatos También se encuentra en Documentos relacionados

Título:
Functional Properties (acid and bile tolerance) and antibiotic susceptibility of lactic acid bacteria isolated from newborn calves for the design of a probiotic product

Autor(es):
NC Maldonado
MEF Nader-Macías

Descripción:
Diarrhea in young calves in dairy farms is one of the main causes of economic losses, morbidity and mortality. The use of probiotic products as feed additives or complements is a novel alternative for the prevention of intestinal syndromes. In order to include beneficial bacteria in the design of a probiotic product, their functional and safety characteristics must be studied. The aim of this work is to evaluate the behavior of the strains in some ? in vitro? gastrointestinal conditions such as acid stress and bile salts in the specific physiological concentration of young calves. The antibiotic susceptibility of a group of lactic acid bacteria from calves which were identified due to their beneficial properties was also studied. The strains, genetically identified and used for the resistance assays were: Lactobacillus johnsonii CRL1692, CRL1693, CRL1699, CRL1700, CRL1701 and CRL1706; Lamylovorus CRL1697; L. murinus CRL1695 and CRL1705; L. mucosae CRL1696 and CRL1698; L. salivarius CRL1694 and CRL1702; and Enterococcus faecium CRL1703. The results of gut resistance assays showed that all the strains were resistant to pH 4 and to a bile salts concentration of less than 0.5%. However, some of them were sensitive to pH 2. The most pH-sensitive strains were found to be L. johnsonii and L. amylovorus, and enterococci. However, pre-treatment at low pH increased the growth rate of the L. salivarius strains. The minimal inhibitory concentration showed that the strains were sensitive to Tetracycline, Erythromycin, Chloramphenicol and Ampicillin, while most of them were resistant to Kanamycin. The results allowed the selection of the most adequate strains to be included in a probiotic product that can be utilized most successfully in young calves. Fil: Maldonado, Natalia Cecilia. Consejo Nacional de Investigaciones Científicas y Técnicas. Centro Científico Tecnológico Conicet - Tucumán. Centro de Referencia para Lactobacilos; Argentina. Fil: Nader, Maria Elena Fatima. Consejo Nacional de Investigaciones Científicas y Técnicas. Centro Científico Tecnológico Conicet - Tucumán. Centro de Referencia para Lactobacilos; Argentina

LA REFERENCIA IN OPENAIRE EXPLORE

Publication . Article . 2001

RELACIÓN ENTRE LA DIVERSIDAD Y BIOMASA EN COMUNIDADES HERBÁCEAS DEL VALLE DE INUNDACIÓN DEL RIO DULCE (ARGENTINA CENTRAL). IMPORTANCIA PARA SU MANEJO

Menghi, Mirta Melva Mercedes; del Sueldo, Ruben Arturo; Carelli, Haydee;

[OPEN ACCESS](#) [SPANISH; CASTILIAN](#)

Published: 01 Dec 2001 Journal: Pastos (issn: 0210-1270, eissn: 0210-1270, [Copyright policy](#))

Publisher: Sociedad Española para el Estudio de los Pastos

Country: Argentina



[LINK THIS PUBLICATION TO...](#)

[CITE THIS PUBLICATION](#)

Now

SUMMARY

REFERENCES

33

Abstract

Se analizan seis comunidades higro-halófilas de interés forrajero comunes en el área de estudio. La mayor parte de la cobertura vegetal corresponde a pastos hemicriptófitos y geófitos suculentos perennes. Numerosas hierbas anuales de pequeño tamaño y variada morfología contribuyen más a la diversidad que a la cobertura y biomasa. Se registraron 40 especies en total; los valores extremos de diversidad general (0,259 y 0,855 bits) coincidieron inversamente con los de biomasa (471,78 y 102,9 g de peso seco/0,25 m², respectivamente); la tendencia no fue clara en valores intermedios de biomasa (145,95 a 285,4 g de peso seco/0,25 m²). El mejor ajuste de los modelos de...

[Read more](#)

Subjects

[FREE TEXT KEYWORDS:](#) HUMEDAL, VEGETACION HERBACEA, FACTORES REGULADORES, RELIEVE, SITIO RAMSAR, INUNDACION, SALINIDAD, Otras Ciencias Biológicas, Ciencias Biológicas, CIENCIAS NATURALES Y EXACTAS

Related Organizations

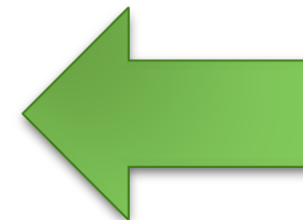
[Consejo Nacional de Investigaciones Científicas y Técnicas](#)
Argentina

Download from

[View all 2 versions](#)

[CONICET Digital \(CONICET\) - Consejo Nacional de Investigaciones Científicas y Técnicas](#)
Article . 2001
Provider: LAReferencia - Red Federada de Repositorios Institucionales de Publicaciones Científicas Latinoamericanas

[Pastos](#)
Article . 2011
Provider: POLI-RED (Revistas Digitales Politécnicas)

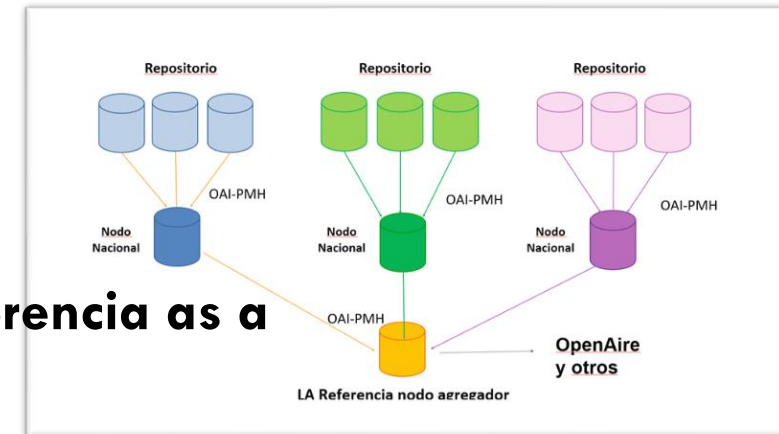


BACKGROUND

LA Referencia is a regional repository network with a hierarchal structure:

1. **National nodes (countries) harvest individual repositories**
2. **LA Referencia regional node harvest national nodes**
3. **OpenAIRE Harvest LA Referencia**

Before this work OpenAIRE harvested and processed LA Referencia as a monolithic collection



In order to integrate OpenAIRE services such as OpenAIRE Graph API, Usage Statistics and OpenAIRE Broker a way to trace and identify original repositories behind LA Referencia was needed.

Example: To deliver Broker Events to a repository manager for a given record, OpenAIRE pipeline needs to know the source repository.

Registering every single repository in OpenAIRE was not an option.

ACTIONS. IMPROVING RECORD PROVENANCE

1. We implemented the very same strategy that OpenAIRE, ask repositories to register in OpenDOAR.
2. Most of L.A. repositories were not registered, so a registering campaign was necessary. The coverage was increased but still working on that. OpenAIRE services are a great incentive to encourage repositories to register.
3. We improved the record provenance metadata to address the repository id (ie: OpenDOAR ID). This change was discussed with OpenAIRE team during technical meetings.
4. Developed a software update of LA Referencia platform running at national level. After the update the national nodes started to track ids, enrich and deliver metadata records to the higher aggregation levels.
5. Then we worked with the OpenAIRE harvesting and indexation team in order to push the improved metadata into the OpenAIRE pipeline.
6. After a full harvest and indexing cycle individual repositories behind LA Referencia aggregator can be identified, so services can be delivered properly to each one.

```
<about>
  <provenance>
    <originDescription altered="false" harvestDate="2020-10-04 11:37:14.156">
      <baseURL>.</baseURL>
      <identifier>oai:dspace.ucuenca.edu.ec:123456789/29081</identifier>
      <timestamp>2020-10-04T11:37:13Z</timestamp>
      <metadataNamespace>http://www.openarchives.org/OAI/2.0/oai_dc/</metadataNamespace>
      <repositoryID>opendoar:4186</repositoryID>
      <repositoryName>Repositorio Universidad de Cuenca - Universidad de Cuenca</repositoryName>
    </originDescription>
  </provenance>
</about>
</oai_dc:dc>
```

NEXT STEPS

- Integrate OpenAIRE Broker API into LA Referencia Repository Dashboard and report the results.
- Beyond the OpenAIRE Advance project, LA Referencia, IBICT (Brazil) and CNR OpenAIRE teams are exploring the integration of OpenAIRE Graph results into the new version of LR Harvester(*), which is focused in metadata enrichment and linking with CRIS and National CVs Systems.

* LR Harvester version 4.0 is being development in collaboration with IBICT (Brazil) and FCT/Univ. Minho (Portugal)



THANK YOU

Lautaro Matas

lautaro.matas@redclara.net

lmatas@gmail.com

@lmatas