

OpenAIRE Research Graph & the broker service

Claudio Atzori (CNR-ISTI)
OpenAIRE week 2020



An open metadata research graph of interlinked scientific products, with access rights information, linked to funding information and research communities

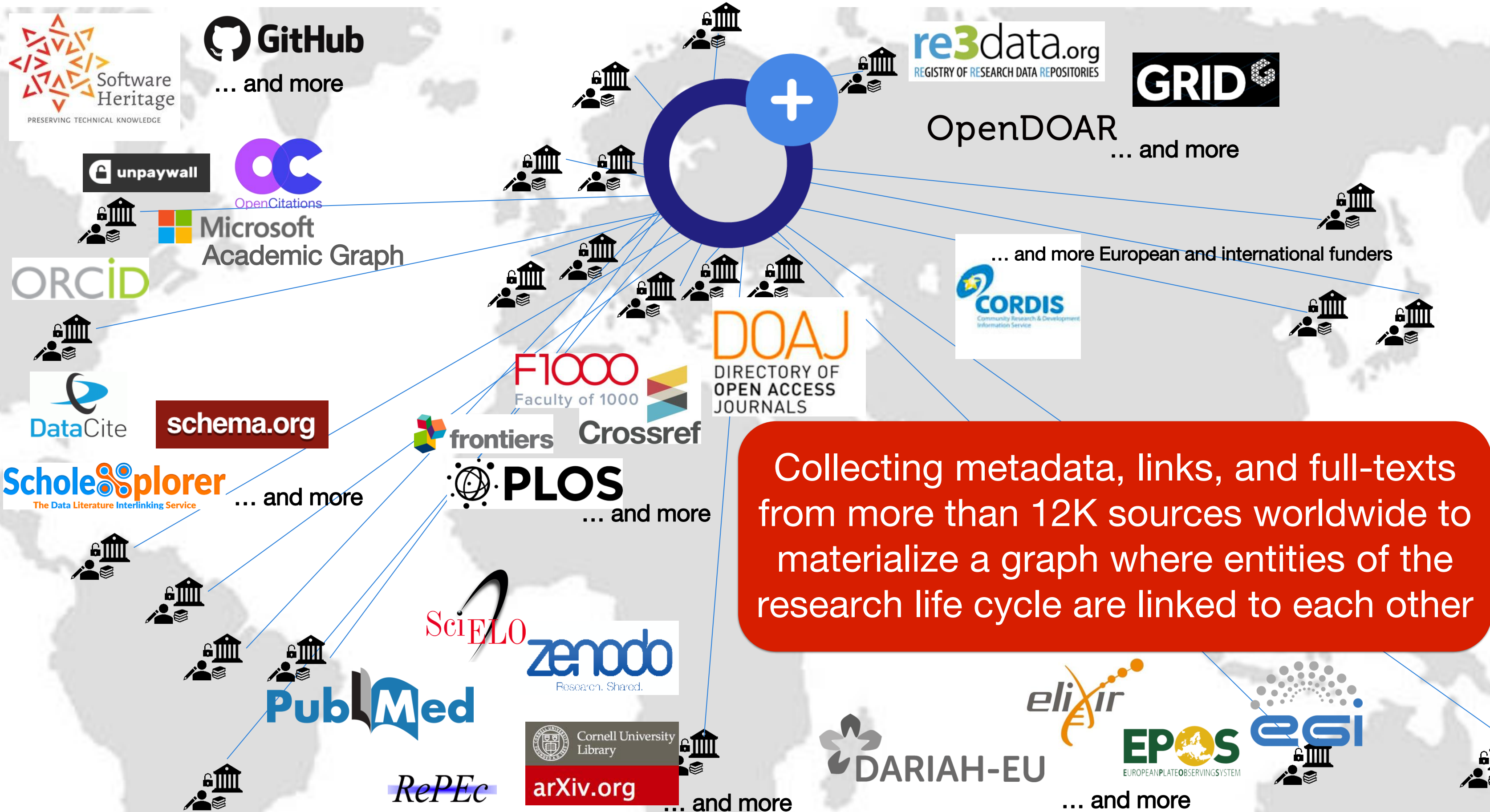


Discover more at graph.openaire.eu

Graph: model for the representation of information

OpenAIRE uses it to represent **objects** in the scholarly communication domain and the **relationships** that exist among them.

Edges of the graph are annotated with a label that specifies the **semantics** of the relationships between two objects, each represented as a node in the graph.



GitHub
... and more

re3data.org
REGISTRY OF RESEARCH DATA REPOSITORIES

GRID

OpenDOAR
... and more

unpaywall
OpenCitations

Microsoft Academic Graph

... and more European and international funders
CORDIS
Community Research & Development Information Service

ORCID

DOAJ
DIRECTORY OF OPEN ACCESS JOURNALS

F1000
Faculty of 1000

DataCite

schema.org

frontiers **Crossref**

Collecting metadata, links, and full-texts from more than 12K sources worldwide to materialize a graph where entities of the research life cycle are linked to each other

ScholarXplorer
The Data Literature Interlinking Service
... and more

PLOS
... and more

SciELO
zenodo
Research. Shared.

PubMed

RePEc

arXiv.org
... and more

DARIAH-EU

elixir

EPOS
EUROPEAN PLATE OBSERVING SYSTEM

eESI

... and more

Registries: data sources offering authoritative lists of entities

Registries of researchers



Registries of organizations




and other funders

Registries of projects

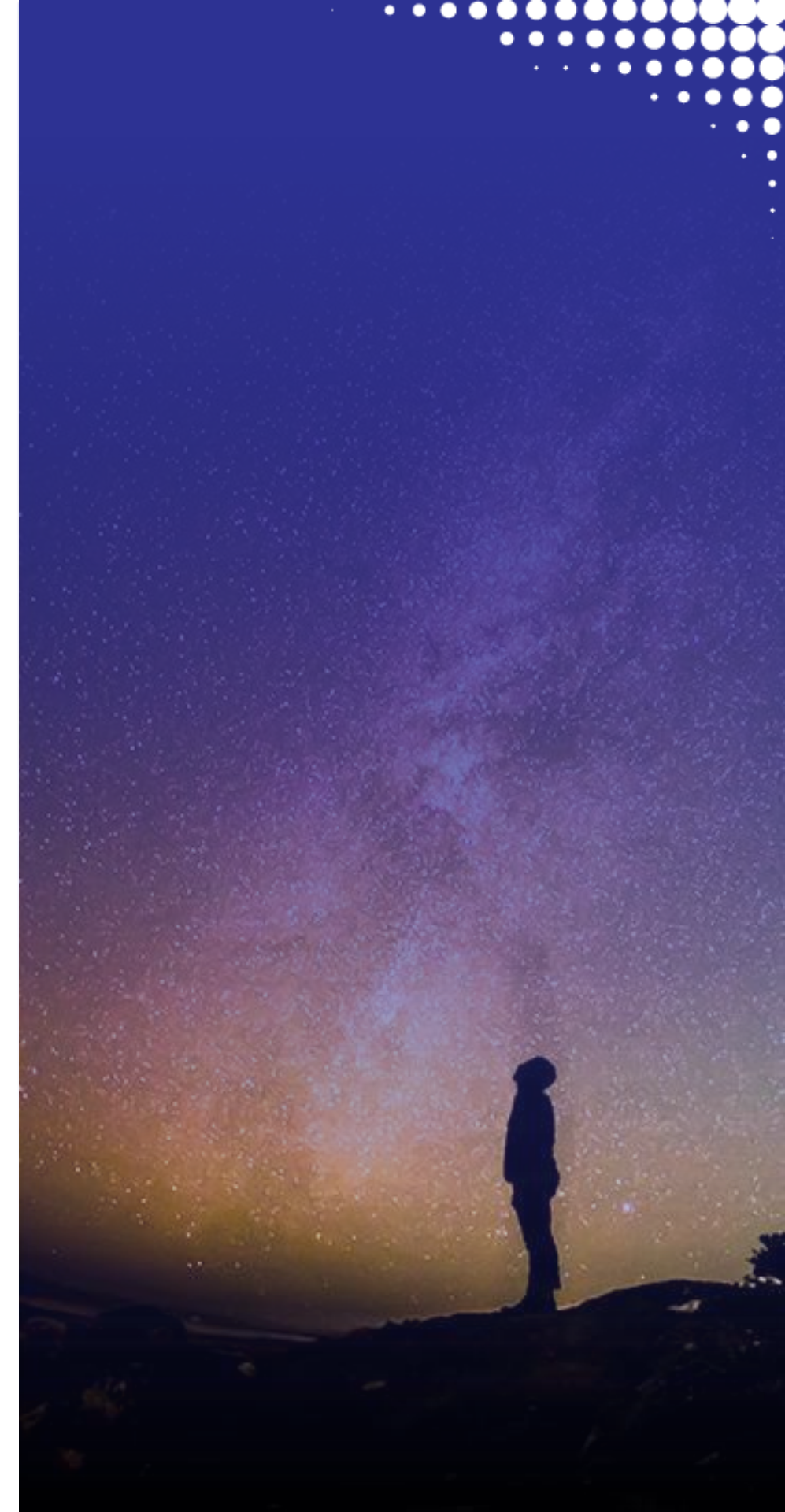


and other funders

Registries of data sources

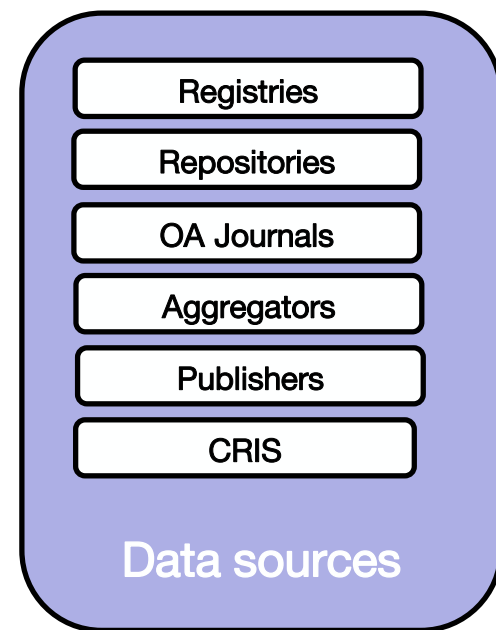


+ journal lists from publishers



Aggregated data sources

450Mi harvested records
500Mi bi-lateral links
13Mi+ full-texts



OpenAIRE PROVIDE



Metadata,
relationships,
full-texts

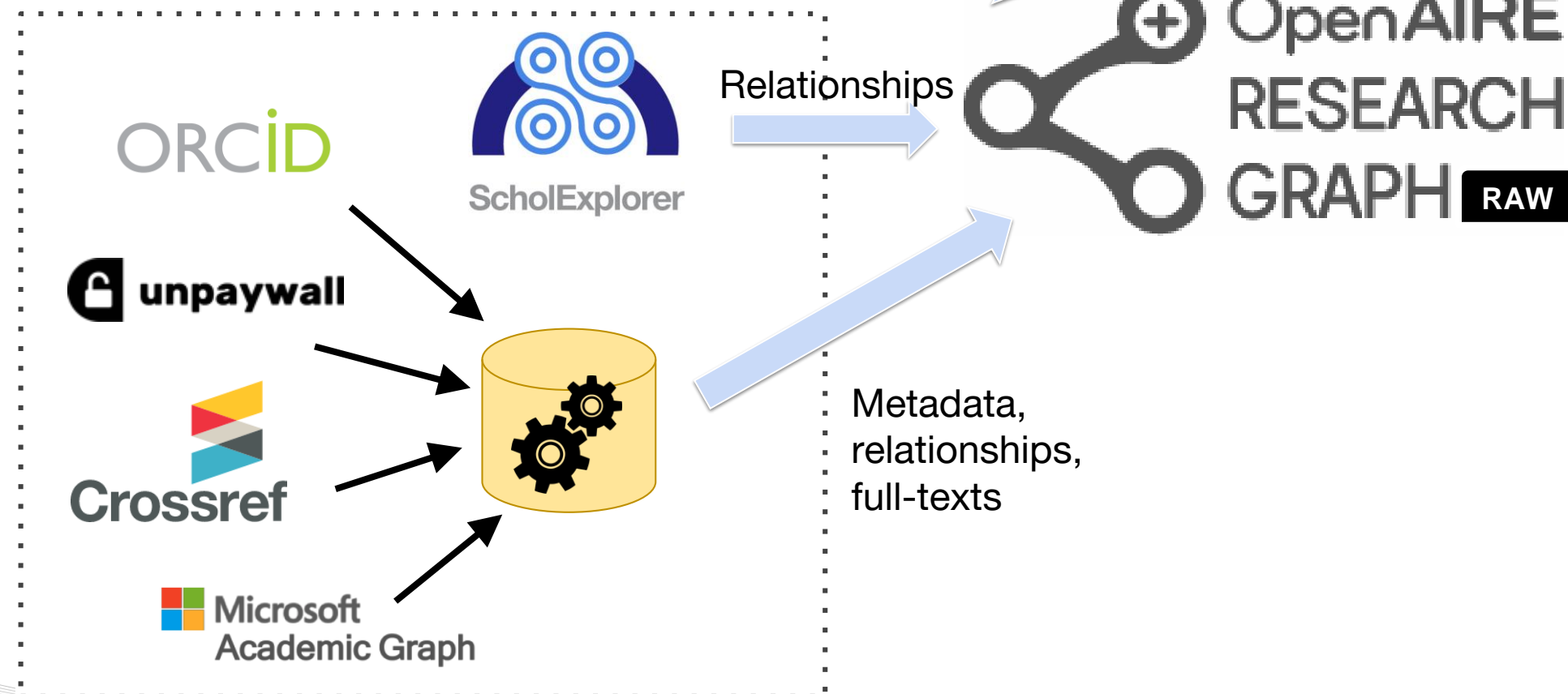


Link

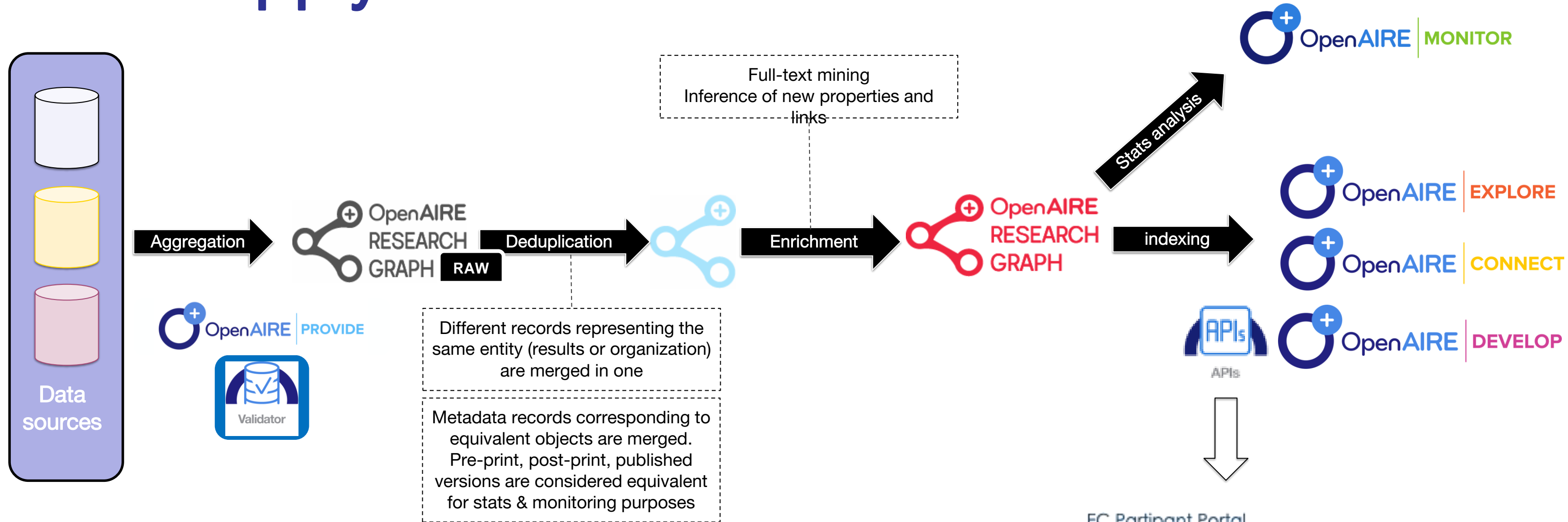
Metadata,
relationships

OpenAIRE EXPLORE

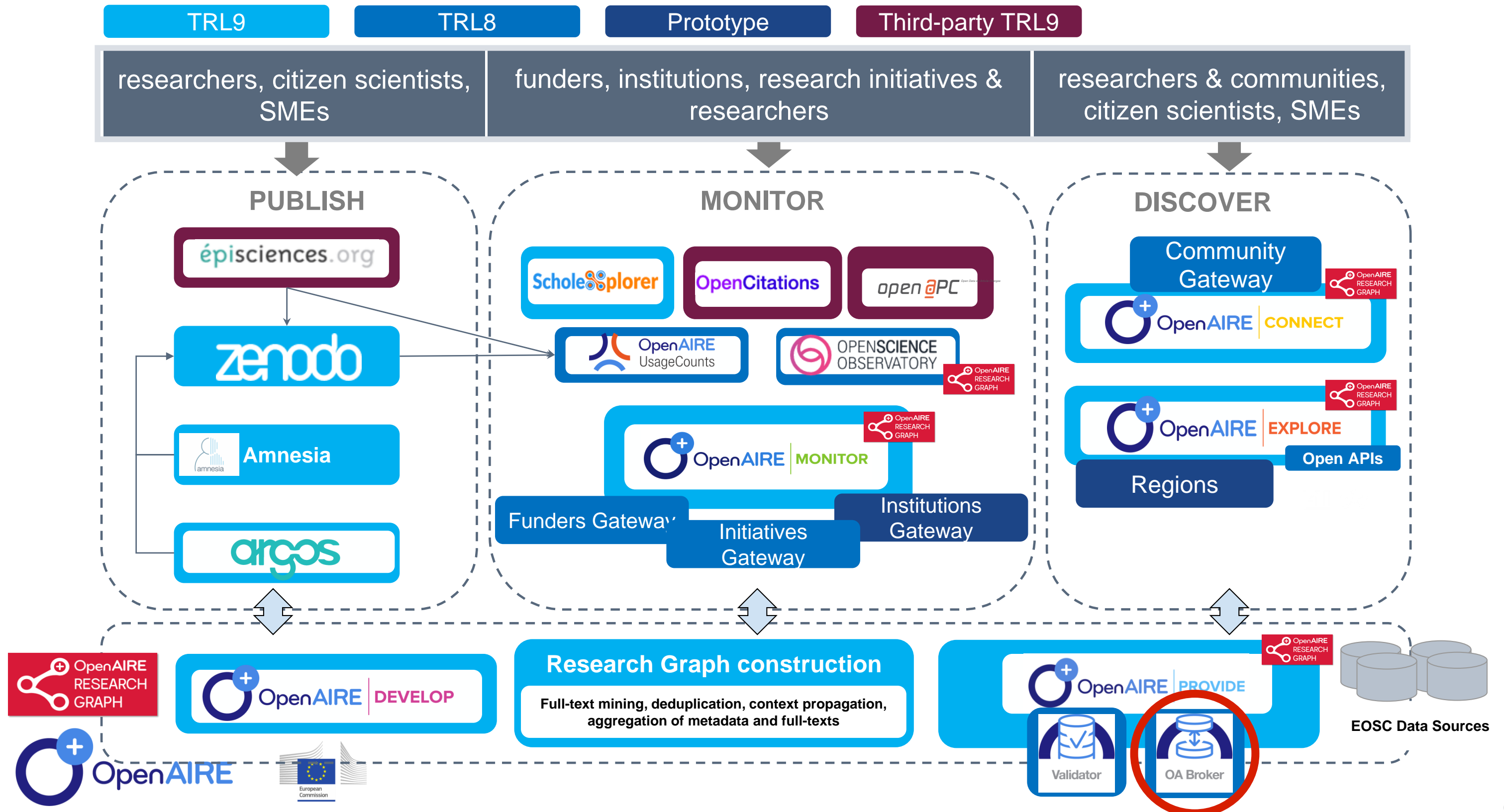
OpenAIRE CONNECT



OpenAIRE Research Graph the supply chain



OpenAIRE Services



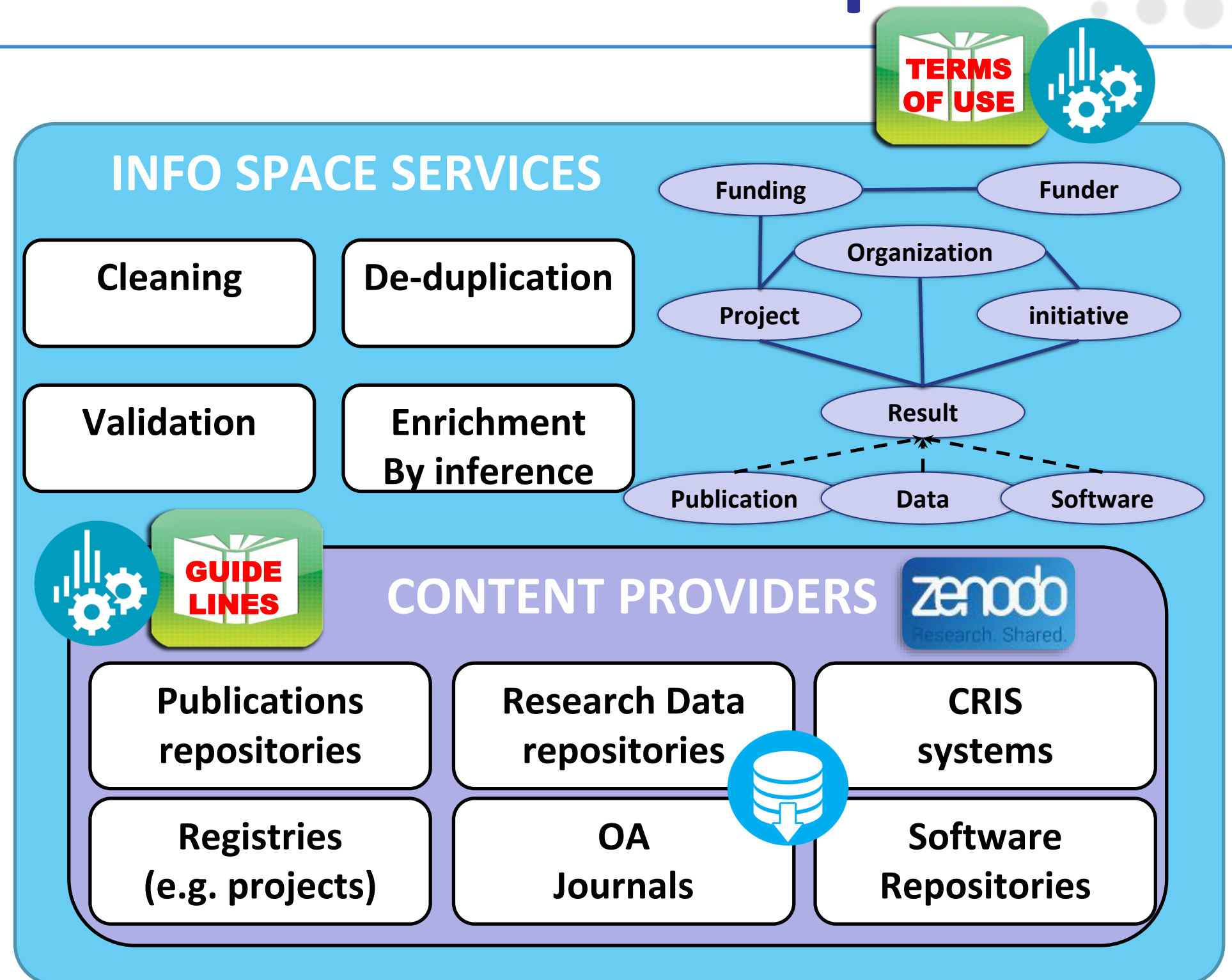
OpenAIRE Broker Service - Concept

Repositories in OpenAIRE may be interested to acquire metadata information about **publications** that are

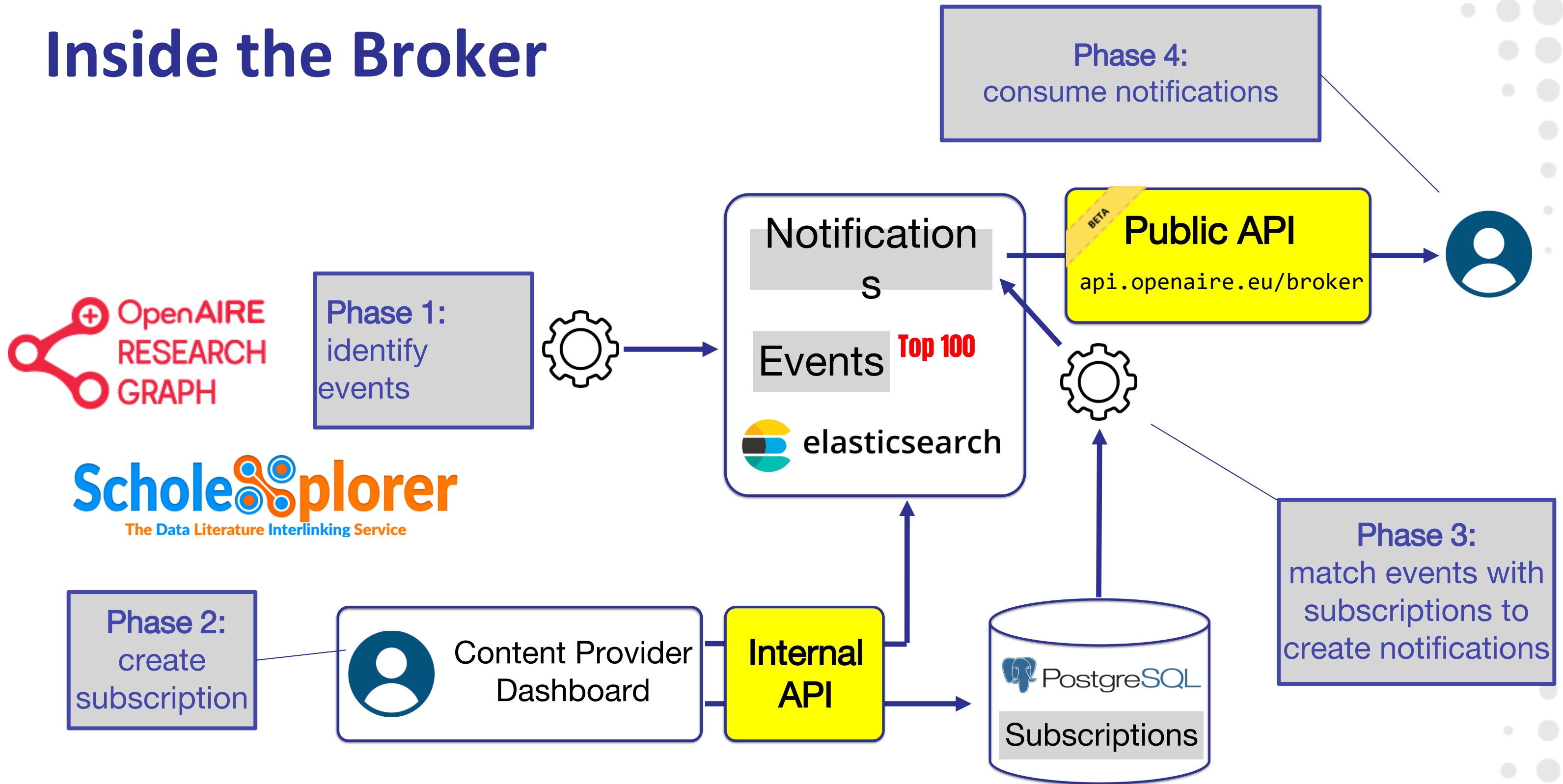
“potentially of interest to them”

i.e. be part of their collection:

- *enrich the records with extra metadata information*

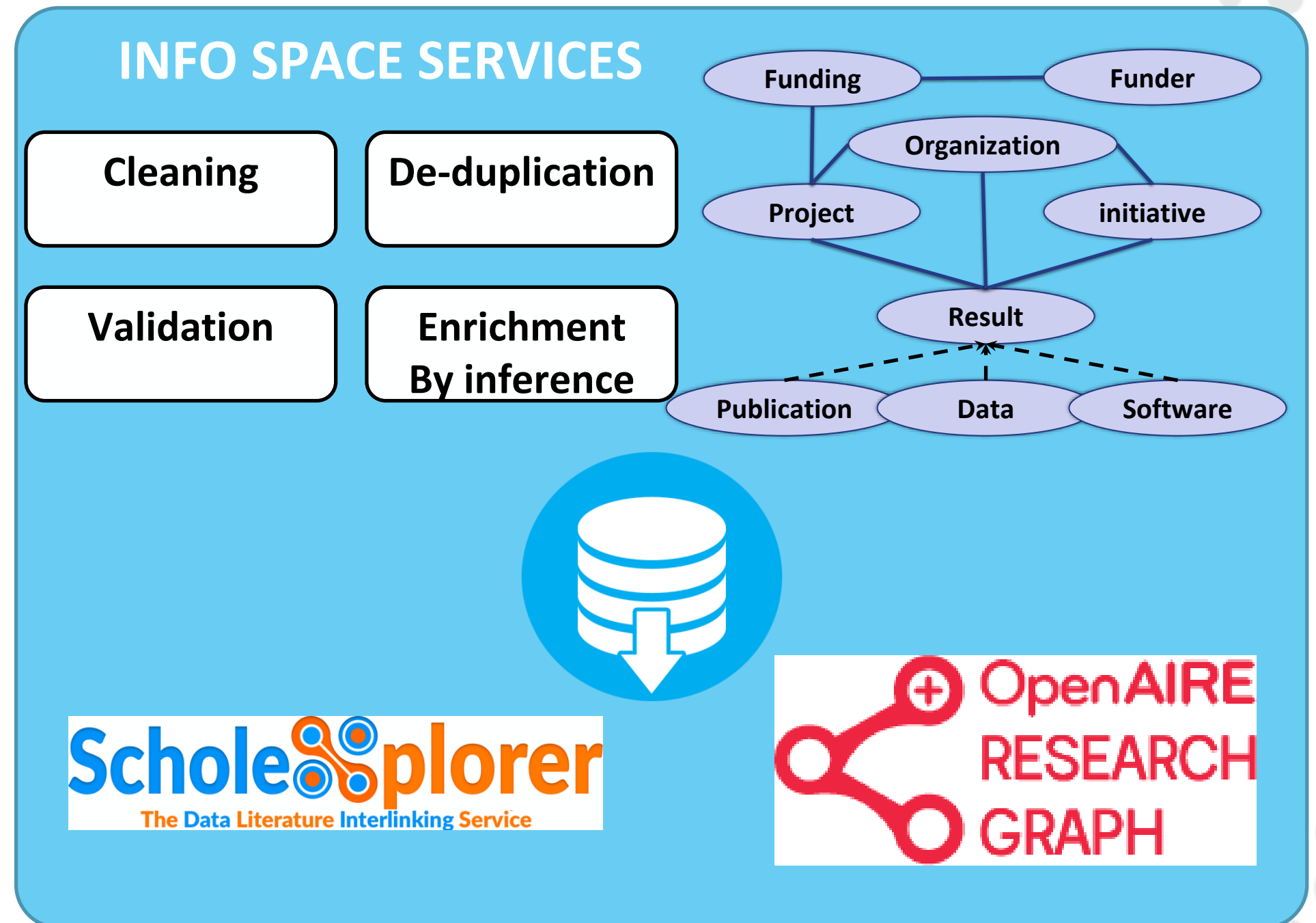


Inside the Broker



Calculation of Broker events

Analysis of the groups of duplicated records

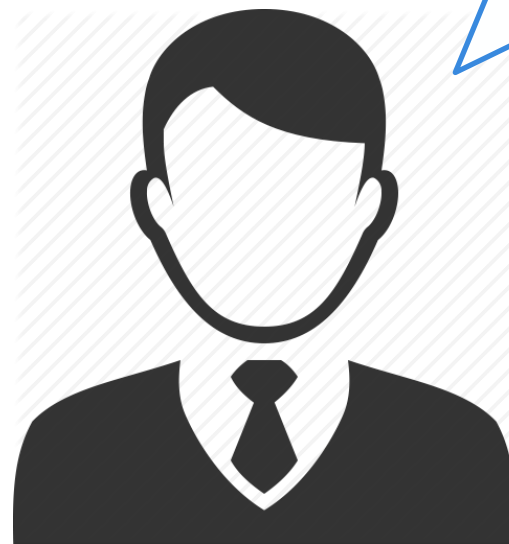


Event trust

Events are produced by *algorithms* that takes decisions using *non-authoritative information*;

Trust as a manner to expose uncertainty

Should I update my record with this project reference?



Tweak and refine events

Trust [0.75 - 1]



Title



+ Add another

Author



+ Add another

Subject



+ Add another

Date

From

To



+ Add another

Apply

Clear

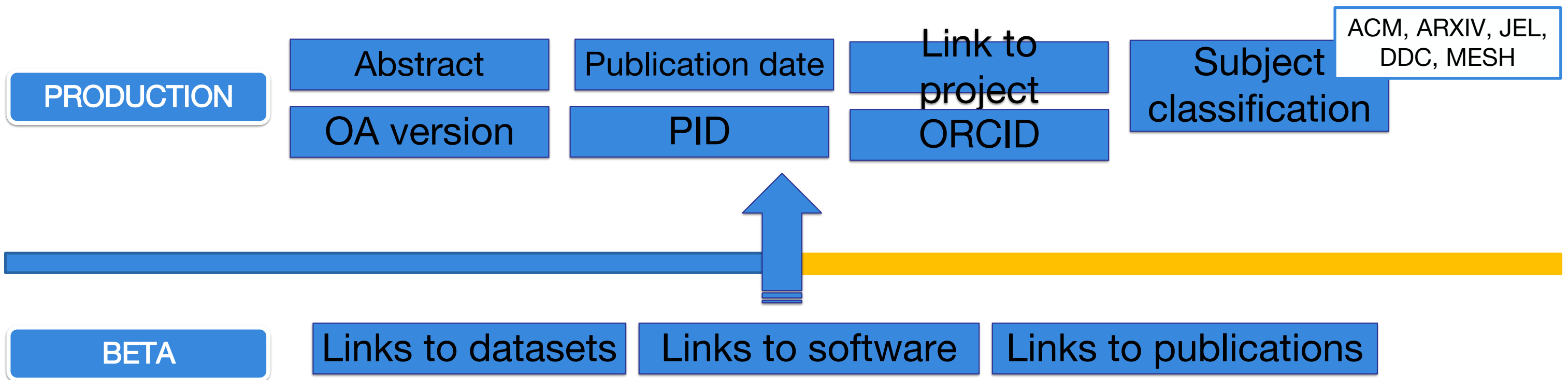
Broker Enrichment Events

ENRICH / MORE

Macro-category that groups events about field values that **differ** from those available in the repository.

ENRICH / MISSING

Macro-category that groups events about field values that are **not present** in the metadata of the repository.



Topic	#Events
ENRICH/MORE/OPENACCESS_VERSION	17054736
ENRICH/MORE/PID	4167583
ENRICH/MORE/SUBJECT/MESHEUROPEPMC	1429089
ENRICH/MISSING/PID	1292499
ENRICH/MISSING/PROJECT	857956
ENRICH/MORE/SUBJECT/ARXIV	1025148
ENRICH/MISSING/ABSTRACT	806453
ENRICH/MORE/SUBJECT/JEL	648996
ENRICH/MORE/SUBJECT/DCC	320023
ENRICH/MORE/SUBJECT/ACM	608756
ENRICH/MISSING/OPENACCESS_VERSION	245912
ENRICH/MISSING/SUBJECT/ARXIV	165230
ENRICH/MISSING/SUBJECT/MESHEUROPEPMC	122031
ENRICH/MISSING/SUBJECT/JEL	84043
ENRICH/MISSING/SUBJECT/DDC	70748
ENRICH/MISSING/PUBLICATION_DATE	37931
ENRICH/MISSING/SUBJECT/ACM	61210
ENRICH/MISSING/AUTHOR/ORCID	69120

Produced by OpenAIRE (for ~700 repositories) in production

Events produced

Topic	#Events
ENRICH/MISSING/DATASET/IS_REFERENCED_BY	4542704
ENRICH/MISSING/DATASET/IS_RELATED_TO	52870
ENRICH/MISSING/DATASET/IS_SUPPLEMENTED_BY	152
ENRICH/MISSING/DATASET/IS_SUPPLEMENT_TO	325
ENRICH/MISSING/DATASET/REFERENCES	24672
ENRICH/MISSING/PUBLICATION/IS_REFERENCED_BY	31026
ENRICH/MISSING/PUBLICATION/IS_RELATED_TO	288375
ENRICH/MISSING/PUBLICATION/IS_SUPPLEMENTED_BY	3653
ENRICH/MISSING/PUBLICATION/IS_SUPPLEMENT_TO	55921
ENRICH/MISSING/PUBLICATION/REFERENCES	164084
ENRICH/MISSING/SOFTWARE	17380

Produced by ScholeXplorer (for ~60 data repositories) in beta

Thank you!

Claudio Atzori (CNR-ISTI)

claudio.atzori@isti.cnr.it

