



Earth Science Information Partners

doi: [10.5281/zenodo.4022955](https://doi.org/10.5281/zenodo.4022955)

► CSCCE Community Profile

Information submitted by Megan Carter
Community Director

Last updated on 10 September 2020

COMMUNITY OVERVIEW

Earth Science Information Partners (ESIP) helps members of the Earth science data community (government, academia and private sector) find each other and work together on common data challenges by fostering rich collaborative experiences. It was founded in 1998 by NASA with the 12 NASA Distributed Active Archives (DAACs) and 24 NASA-funded partners. In 2001, ESIP created a 501(c)(3) non-profit organization to provide management support as it moved from an operational prototype to an independent organization, which is now funded by NASA, NOAA, and USGS. ESIP is made up of over 150 partner organizations in the United States (and increasingly internationally) whose members voluntarily participate in 30+ subgroups called Collaboration Areas. These subgroups are focused on themed topics and Earth science data-related challenges and meet in monthly virtual teleconferences. The larger organization also has twice annual in-person meetings and supports implementation of partner ideas through the ESIP Lab.

- DATA SCIENCE
 - INTERDISCIPLINARY
 - OUTREACH AND EXTERNAL COMMUNICATION
 - INFRASTRUCTURE DEVELOPMENT
 - SKILLS DEVELOPMENT
 - MULTI-STAKEHOLDER COLLABORATION
- Website: www.esipfed.org
 - One-pager: www.esipfed.org/onepager

COMMUNITY BASICS



500 core members, and a broader group of more than 1000

These numbers are an estimate



Mostly online with some in-person events



National (US), with growing international participation, particularly from Australia and Europe



Open



Infrastructure organization, which provides collaborative infrastructure to enable multiple communities of practice

COMMUNITY STRUCTURE

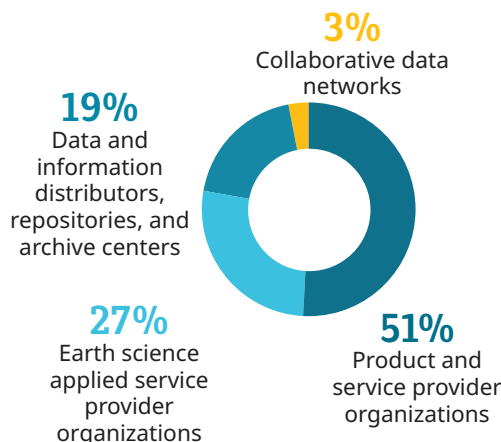
Community Management

Community management is a core capability of the **Community Director**, **Executive Director**, and **Lab Director**. Each of these roles supports the community through strategy, programming, and community-related communications. Each ESIP Collaboration Area (30+ active groups) has a volunteer **chairperson** and at least one **co-chair**.



Members

ESIP has 150+ partner organizations



Community Configuration



ESIP promotes collaboration and innovation through collaboration areas, the ESIP Lab, and ESIP Meetings

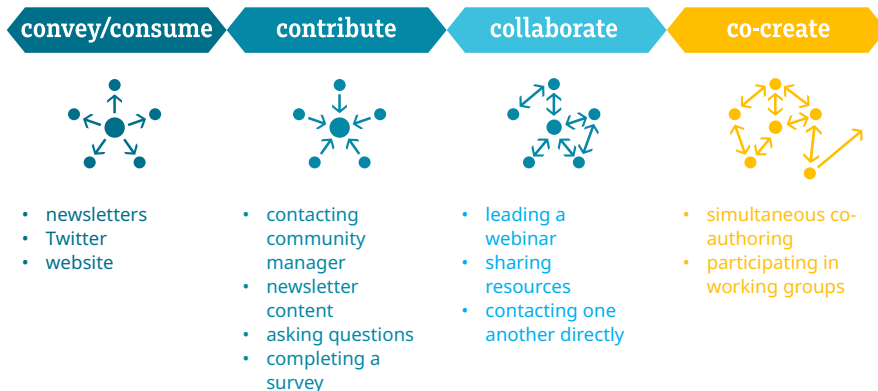


PROGRAMMING

The CSCCE Community Participation Model describes four modes of member engagement that can occur within a community: CONVEY/CONSUME, CONTRIBUTE, COLLABORATE, and CO-CREATE. All modes may be present at once, with some members interacting in multiple modes - or a community may have member engagement that falls into only some of the modes described. The model enables the mapping of community member behaviors to programming and other infrastructural support that the community manager, convening organization, or funder may provide to the community. For more information, see the [CSCCE community participation model](#).

IN THIS COMMUNITY

Online activities include group emails – either as a formal listserv or shared email threads, webinars, working groups, and committee meetings. Offline activities include conferences.



COMMUNITY TOOLBOX

Communications

- | | |
|-----------|-------------|
| Email | Zoom |
| Slack | GoToMeeting |
| MailChimp | Qiqochat |
| Twitter | GitHub |

Productivity

- | | |
|--------------|-----------|
| Google Drive | MediaWiki |
| SurveyGizmo | Sched |
| Wordpress | Cvent |

OUTPUTS & EVALUATION

✓ **Success looks like attendance at virtual telecons and ESIP (in-person) meetings by existing and new members.**

Evaluation and Reporting

- Reports for community team
- Reports for leadership or funders
- Community member surveys
- Community member interviews

Challenges

- Unclear community goals
- Staff turnover
- Too few staff
- Subcommunity leadership turnover
- Subcommunity attendance

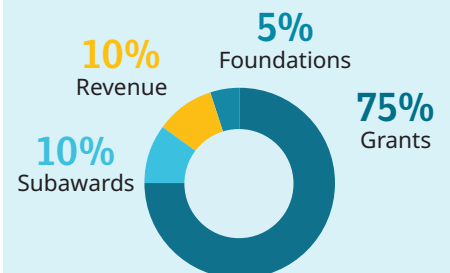
Opportunities

- Diversify digital engagement
- Diversify meeting offerings

Successes over the last year

- **Growth** – adding new members
- **Growth** – adding additional sub-communities
- **Engagement** – increased activity of members (commenting or attending)
- **Productivity** – co-creating community outputs
- **Engagement** – in-person event
- **Recognition** – members see value

FUNDING



Funding Streams

- 75% federal grants (NASA, NOAA, USGS)
- 10% subawards on partner proposals
- 10% ESIP Meeting registration revenue
- 5% private foundation support

*Members can apply for **travel stipends for internal and external events and pilot project funding through ESIP.***