

OpenAIRE Research Graph

Unlocking Open Science Monitoring

◦ **Alessia Bardi**

◦ *Institute of Information Science and Technologies - CNR*

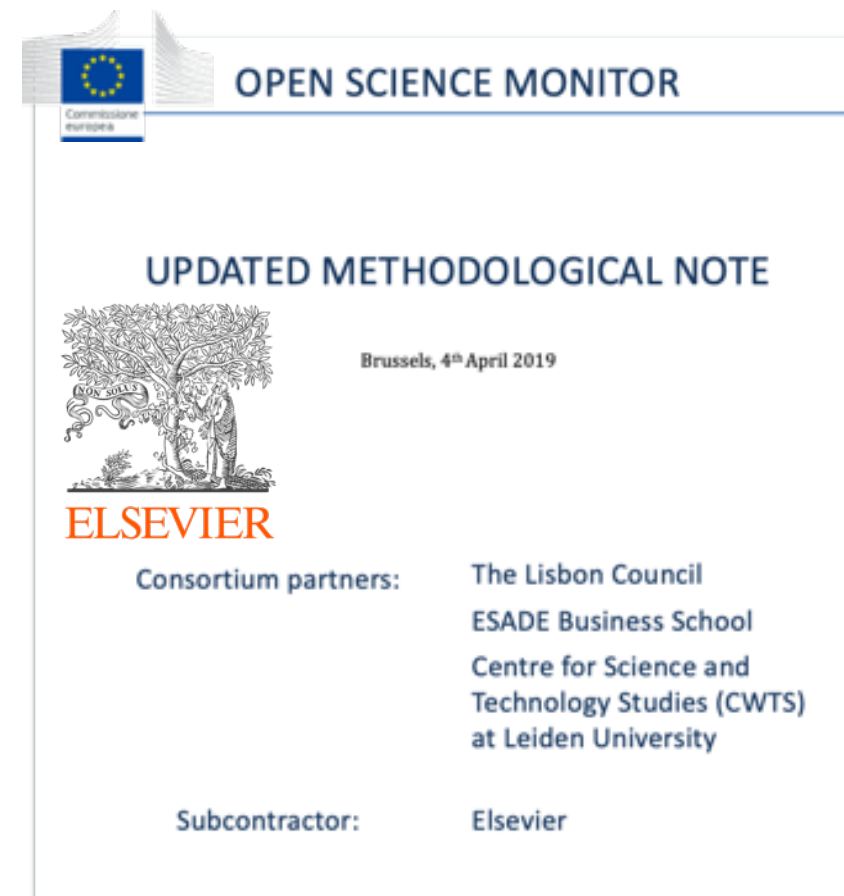
Science publishing, evaluation, and monitoring



Open Science



Scopus®

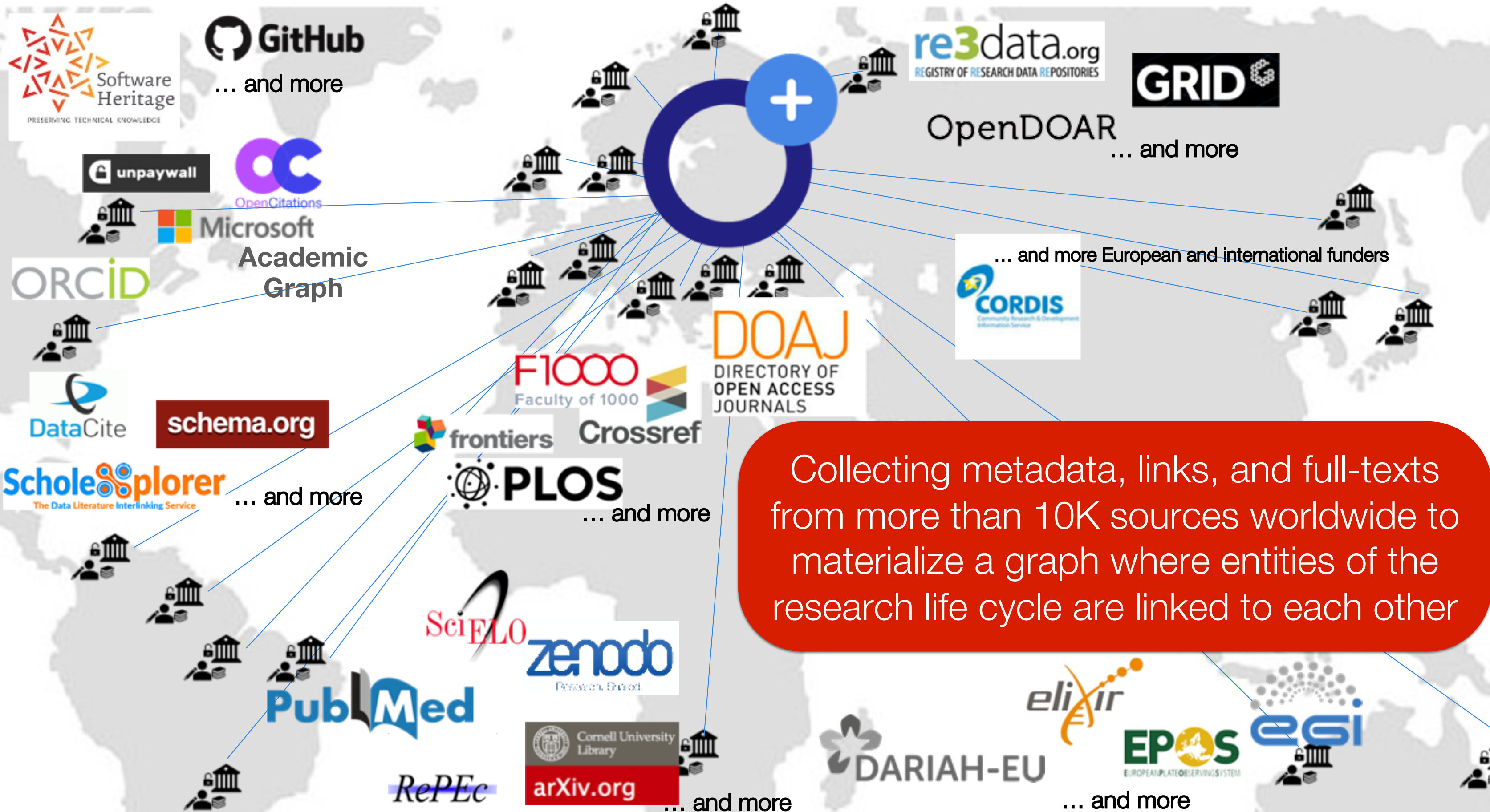




An open metadata research graph of interlinked scientific products, with access rights information, linked to funding information and research communities

Trusted
Transparent
Participatory
De-duplicated
Decentralized
Complete
Open





Collecting metadata, links, and full-texts from more than 10K sources worldwide to materialize a graph where entities of the research life cycle are linked to each other



Content Providers: 70K
(including those “indirectly harvested”)

Publications: 113M
(deduplicated, 10M with full-texts)

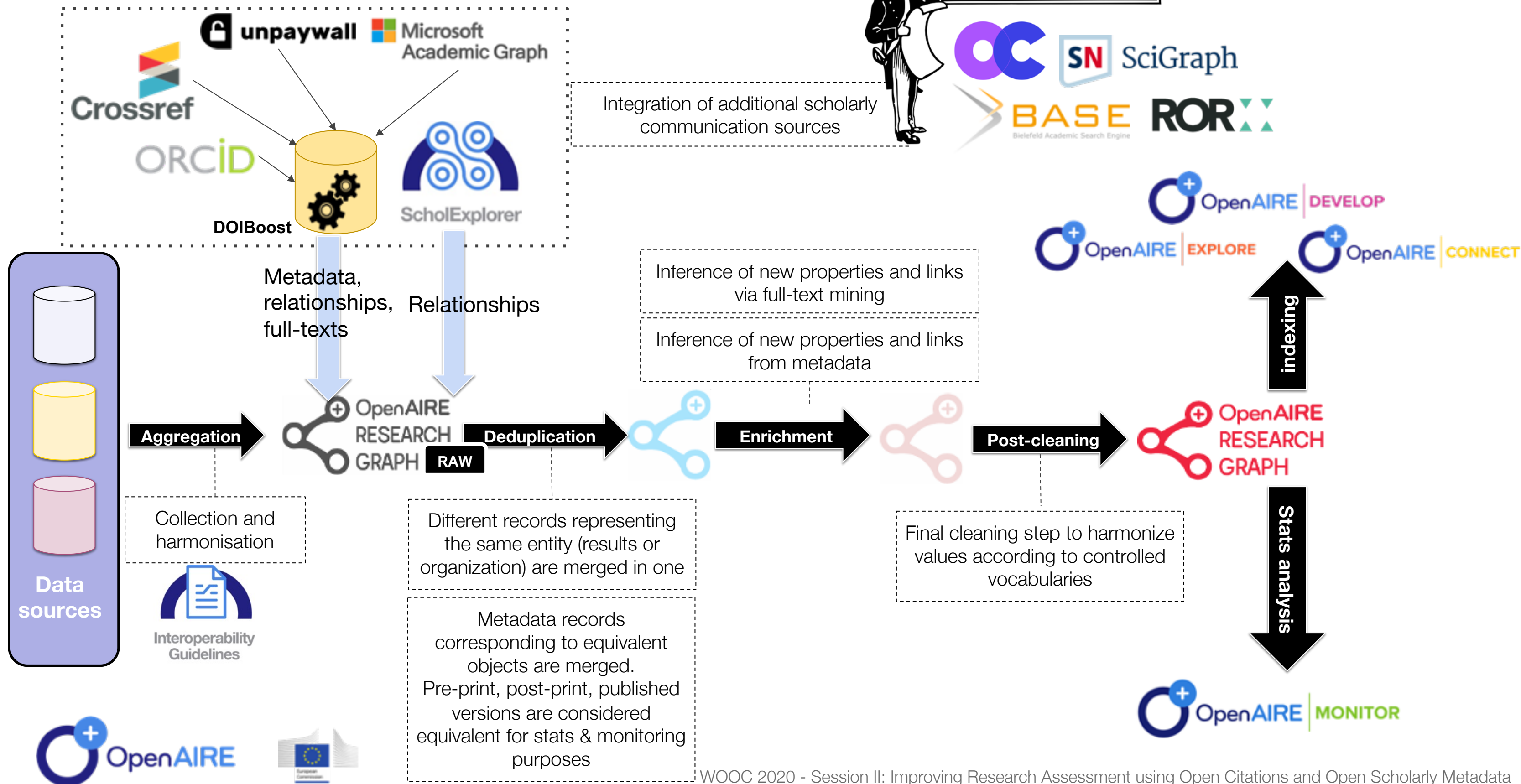
Datasets: 10M

Software: 180K

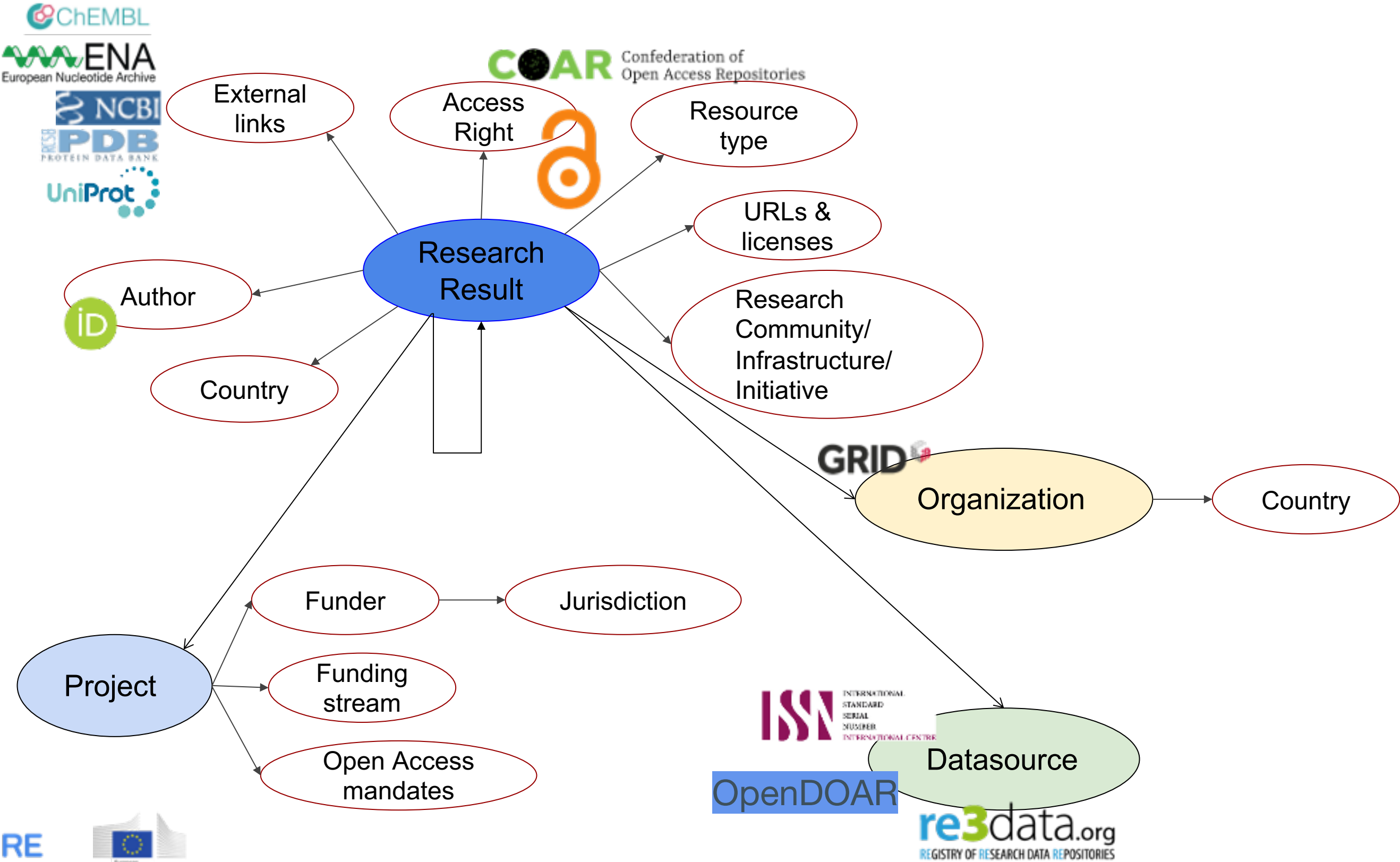
Projects: 3M

Funders: 22

How we build it



A slice of the data model



MONITOR



Funders

Funding impact: research results produced thanks to the grants awarded by the funder
Open Science trends: OA vs non OA, data/software FAIRness, literature/data interlinking, etc.



Research infrastructures

Funding impact: research results produced thanks to the existence of the RI
Open Science trends: OA vs non OA, data/software FAIRness, literature/data interlinking, etc.



Projects

Research impact: research results produced in the context of the project – during and after the project
Open Science trends: including monitoring of compliance to funder mandates



Research Organizations

Funding impact: ability to reach funding from different funders and disciplines

Research impact: ability of affiliated researchers to produce innovative and quality research products

Open Science trends: including monitoring of compliance to local/national OS policies



OpenAIRE monitoring services on top of the graph

Re-use trends

Collaboration networks

Trends in research fields: new (multidisciplinary) disciplines

Institutional project portfolio at hand

Projects and possible liaisons

Research impact of services

Indicators by country

...

An horizon of opportunities...

Useful links

- The OpenAIRE Research Graph Data Model <http://doi.org/10.5281/zenodo.2643198>
- Available dumps of the OpenAIRE Research Graph and documentation is available in the Zenodo community: <https://zenodo.org/communities/openaire-research-graph>
- OpenAIRE API: <http://api.openaire.eu/>
- DOIBoost (paper linked to dataset and software):
<http://doi.org/10.5281/zenodo.1492766>
- ScholeXplorer : the data-literature interlinking service: <http://scholexplorer.openaire.eu>
- Are you a content provider? Join OpenAIRE at <https://provide.openaire.eu/> and checkout our [interoperability guidelines](#)
- Are you a funder? [Contact us](#) to learn more
- Are you a research infrastructure/initiative? [Contact us](#) to learn more
- More info about OpenAIRE: www.openaire.eu

Thank you!

Alessia Bardi

alessia.bardi@isti.cnr.it

