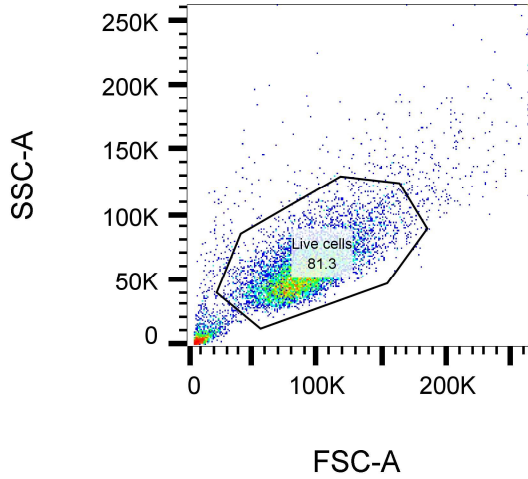
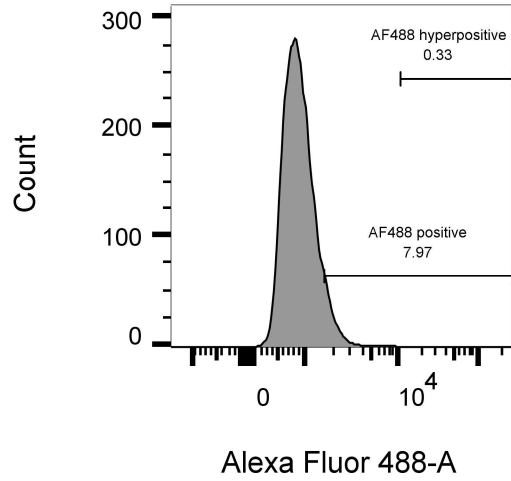


Specimen_001_no EP + Ab_002.fcs
 Ungated
 10000



Specimen_001_no EP + Ab_002.fcs
 Live cells
 8128

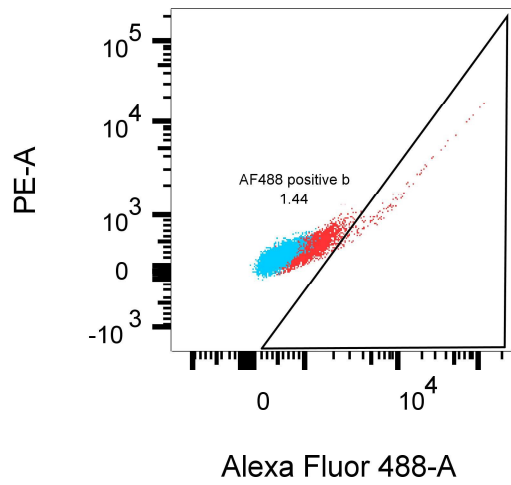
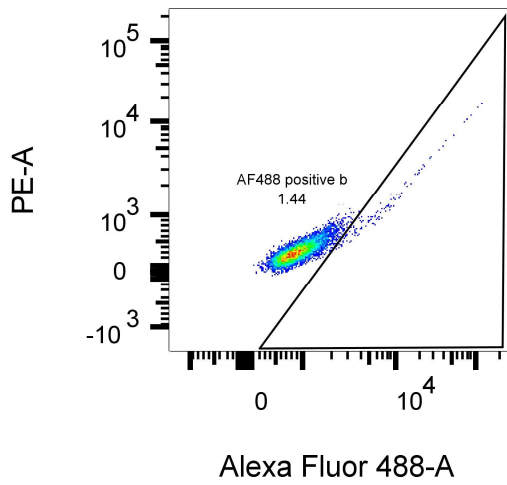


Live cells: Freq. of Total : 81.3

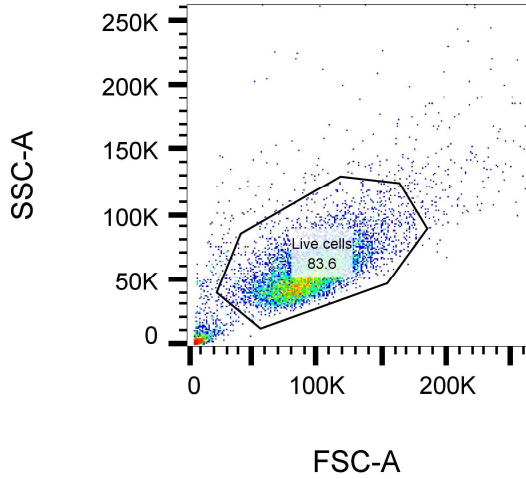
Specimen_001_no EP + Ab_002.fcs
 Live cells
 8128

	Sample Name	Subset Name	Count
■	Specimen_001_sample_001_003.fcs	Live cells	8479
■	Specimen_001_no EP + Ab_002.fcs	Live cells	8128

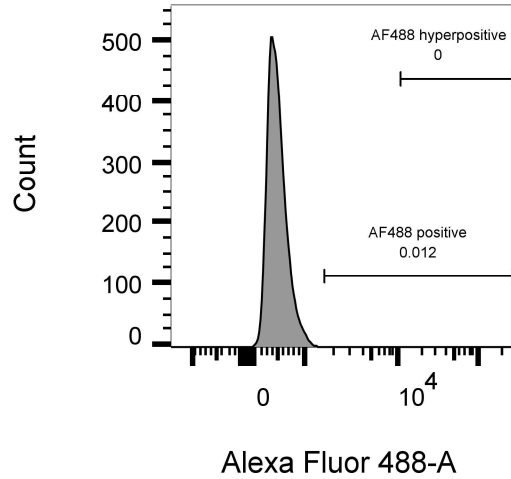
AF488 positive b: Freq. of Parent : 1.44



Specimen_001_no EP no Ab_001.fcs
 Ungated
 10000



Specimen_001_no EP no Ab_001.fcs
 Live cells
 8357

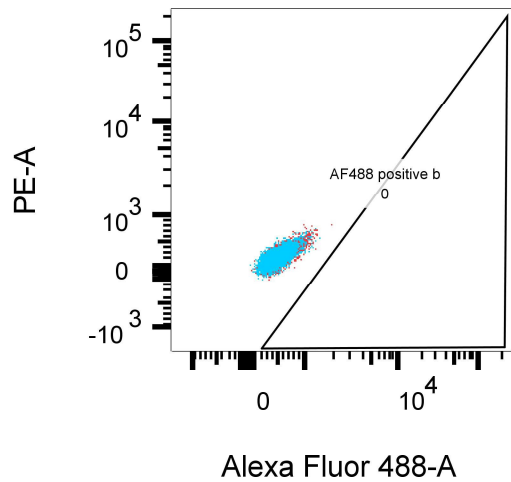
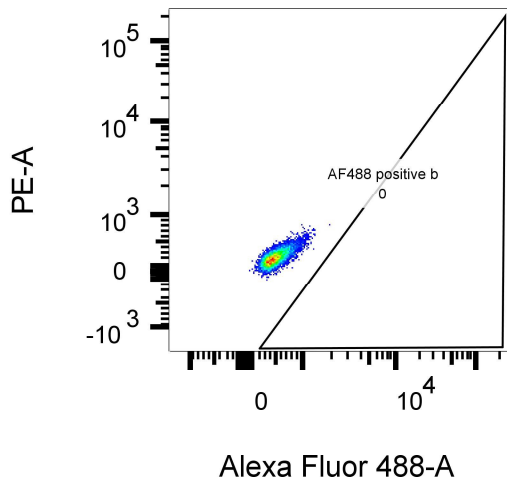


Live cells: Freq. of Total : 83.6

Specimen_001_no EP no Ab_001.fcs
 Live cells
 8357

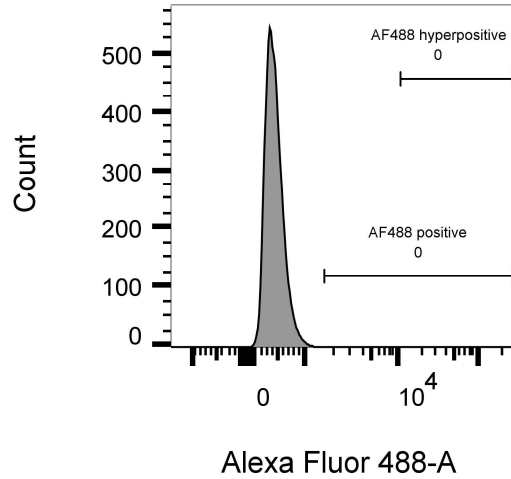
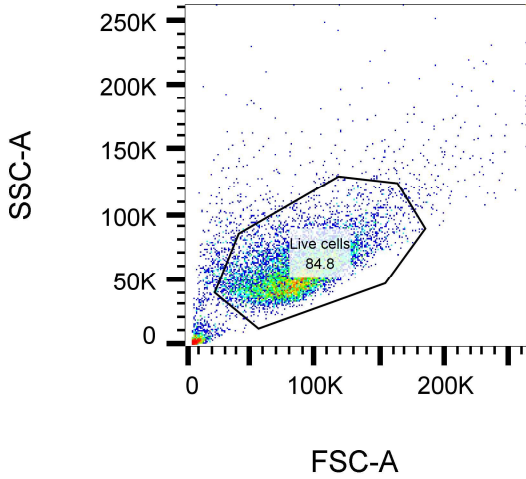
	Sample Name	Subset Name	Count
■	Specimen_001_sample_001_003.fcs	Live cells	8479
■	Specimen_001_no EP no Ab_001.fcs	Live cells	8357

AF488 positive b: Freq. of Parent : 0



Specimen_001_sample_001_003.fcs
 Ungated
 10000

Specimen_001_sample_001_003.fcs
 Live cells
 8479

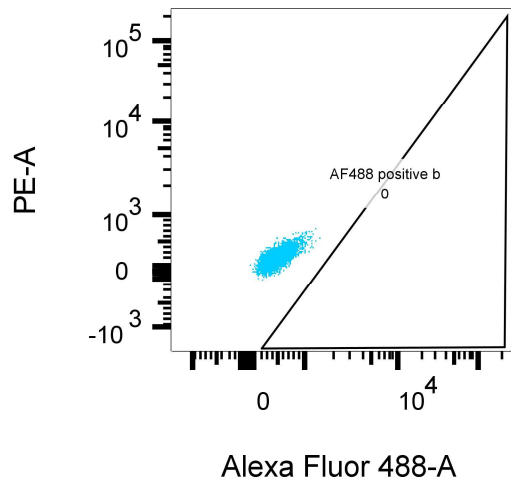
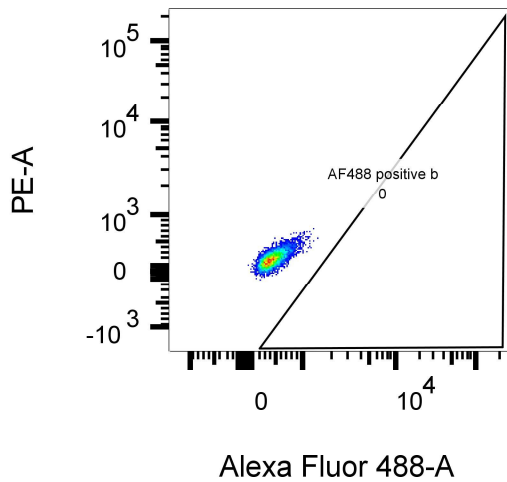


Live cells: Freq. of Total : 84.8

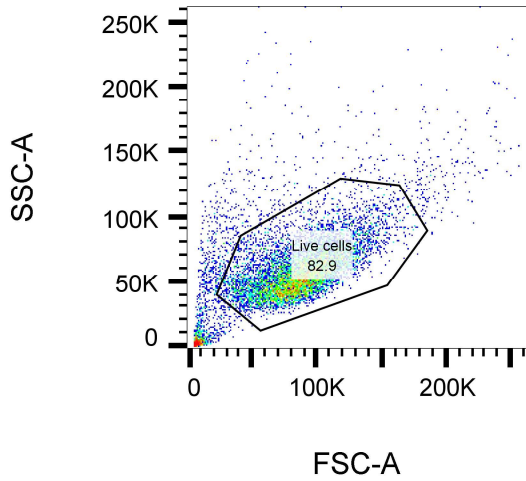
Specimen_001_sample_001_003.fcs
 Live cells
 8479

	Sample Name	Subset Name	Count
■	Specimen_001_sample_001_003.fcs	Live cells	8479
■	Specimen_001_sample_001_003.fcs	Live cells	8479

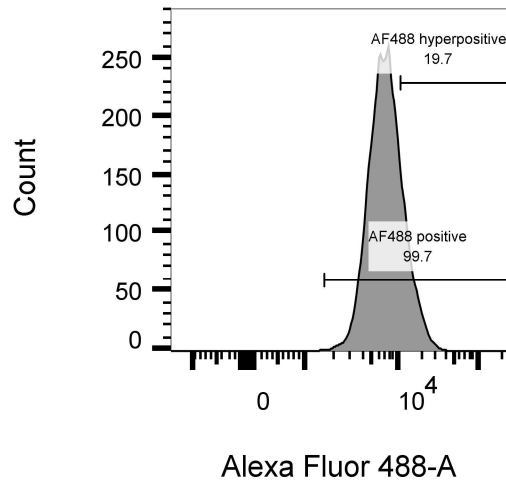
AF488 positive b: Freq. of Parent : 0



Specimen_001_sample_002_004.fcs
 Ungated
 10000



Specimen_001_sample_002_004.fcs
 Live cells
 8293

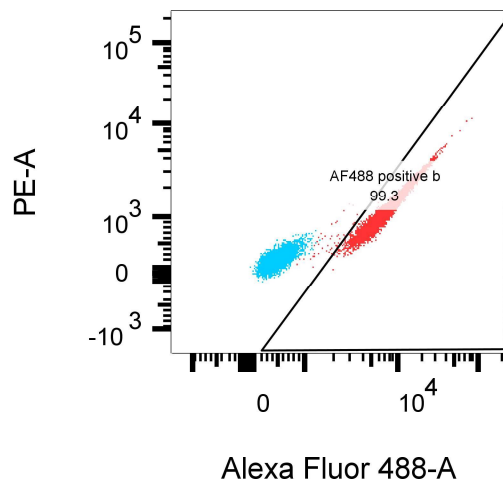
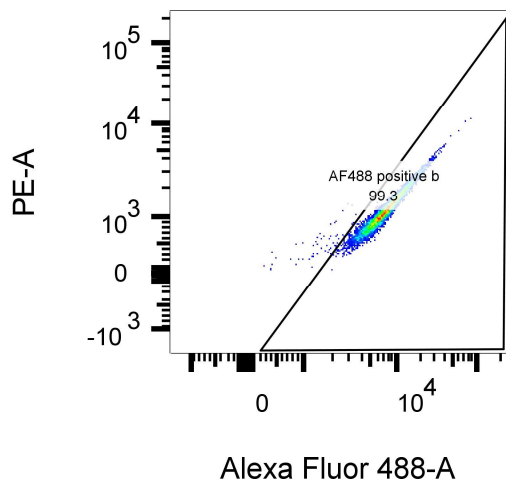


Live cells: Freq. of Total : 82.9

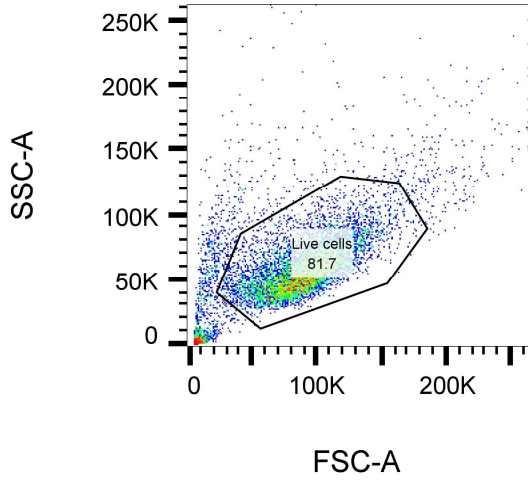
Specimen_001_sample_002_004.fcs
 Live cells
 8293

	Sample Name	Subset Name	Count
■	Specimen_001_sample_001_003.fcs	Live cells	8479
■	Specimen_001_sample_002_004.fcs	Live cells	8293

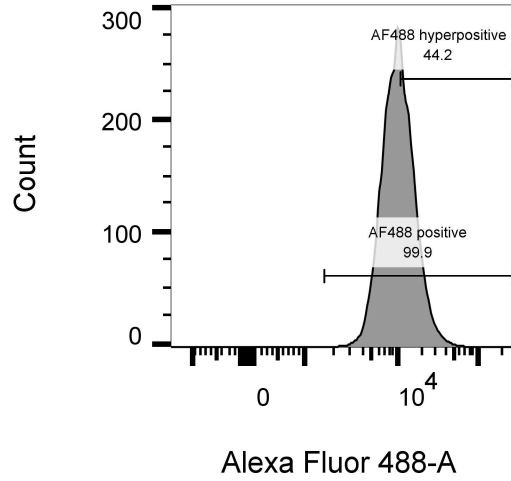
AF488 positive b: Freq. of Parent : 99.3



Specimen_001_sample_003_005.fcs
 Ungated
 10000



Specimen_001_sample_003_005.fcs
 Live cells
 8174

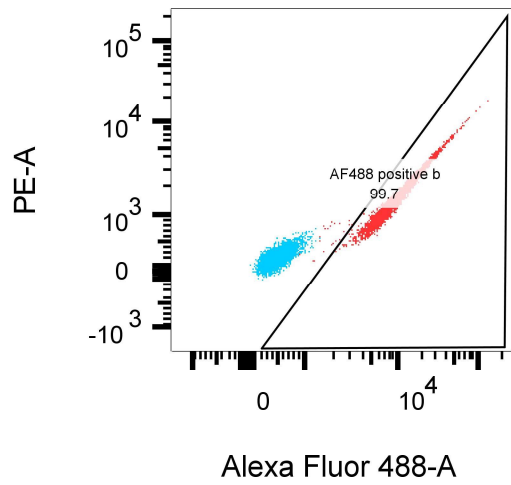
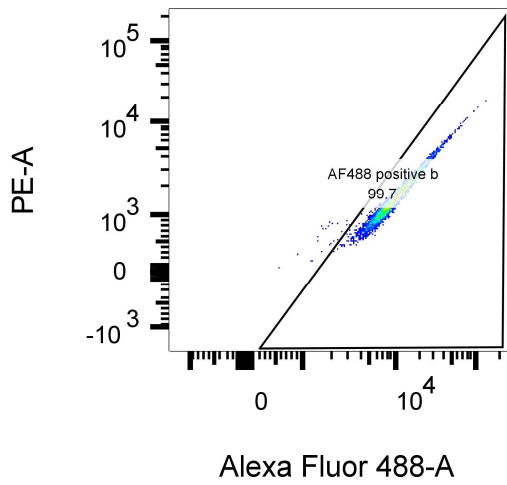


Live cells: Freq. of Total : 81.7

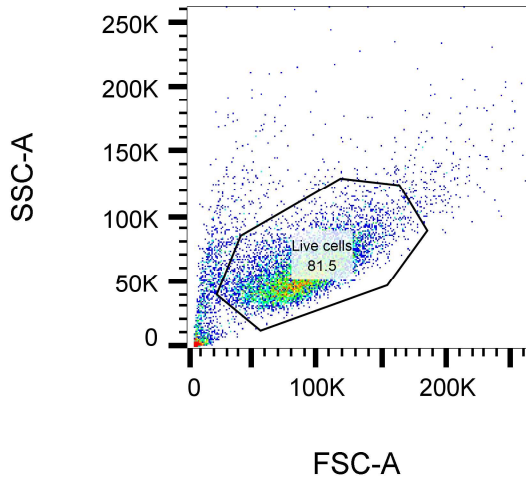
Specimen_001_sample_003_005.fcs
 Live cells
 8174

	Sample Name	Subset Name	Count
■	Specimen_001_sample_001_003.fcs	Live cells	8479
■	Specimen_001_sample_003_005.fcs	Live cells	8174

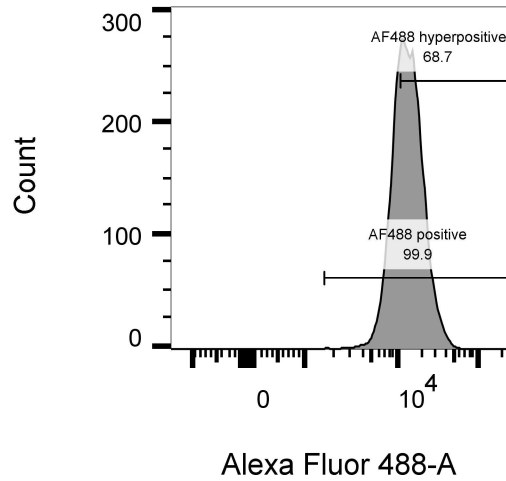
AF488 positive b: Freq. of Parent : 99.7



Specimen_001_sample_004_006.fcs
 Ungated
 10000



Specimen_001_sample_004_006.fcs
 Live cells
 8146

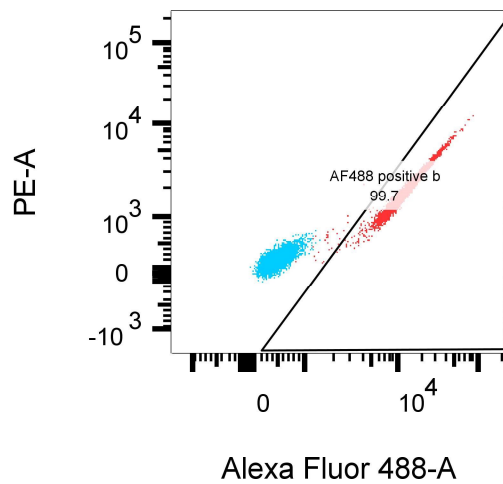
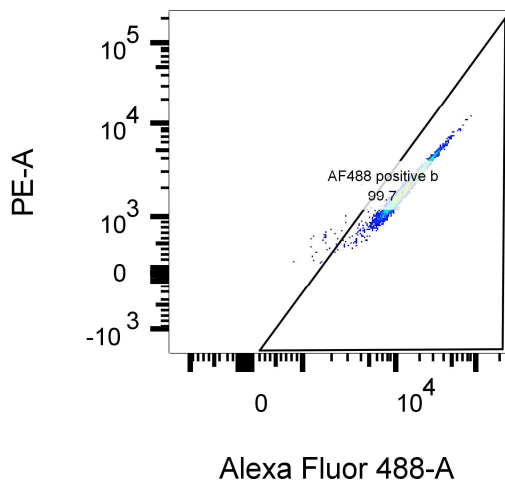


Live cells: Freq. of Total : 81.5

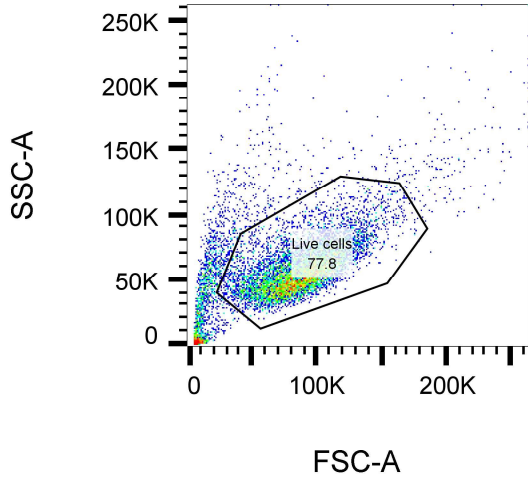
Specimen_001_sample_004_006.fcs
 Live cells
 8146

	Sample Name	Subset Name	Count
■	Specimen_001_sample_001_003.fcs	Live cells	8479
■	Specimen_001_sample_004_006.fcs	Live cells	8146

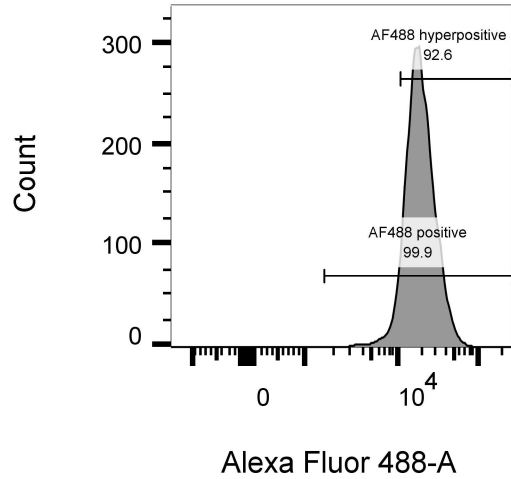
AF488 positive b: Freq. of Parent : 99.7



Specimen_001_sample_005_007.fcs
 Ungated
 10000



Specimen_001_sample_005_007.fcs
 Live cells
 7784

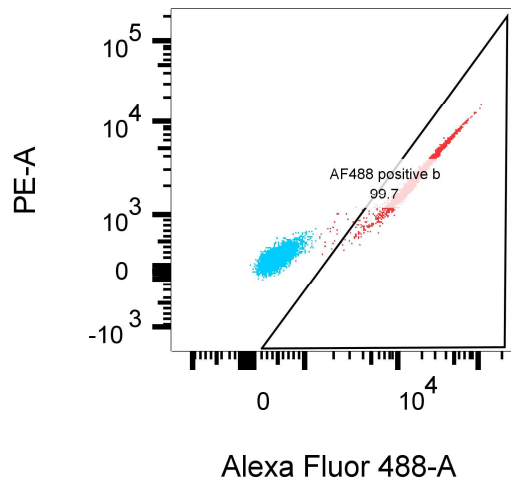
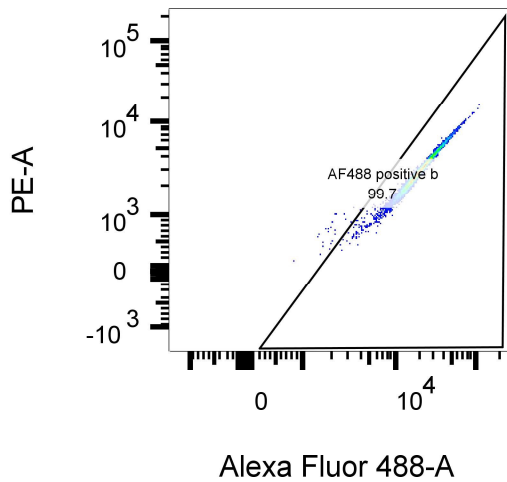


Live cells: Freq. of Total : 77.8

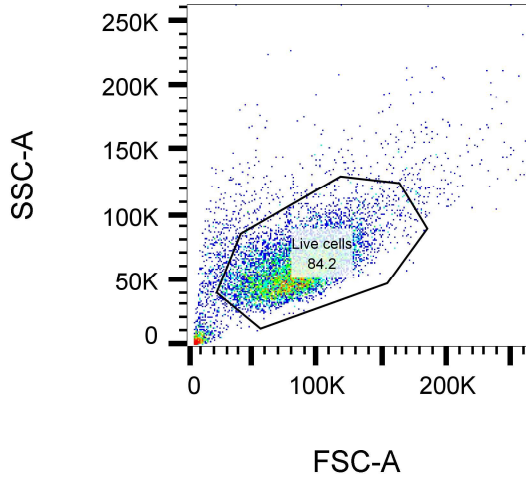
Specimen_001_sample_005_007.fcs
 Live cells
 7784

	Sample Name	Subset Name	Count
■	Specimen_001_sample_001_003.fcs	Live cells	8479
■	Specimen_001_sample_005_007.fcs	Live cells	7784

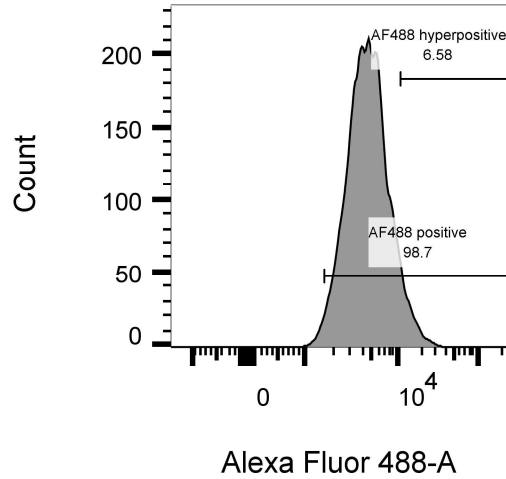
AF488 positive b: Freq. of Parent : 99.7



Specimen_001_sample_006_008.fcs
 Ungated
 10000



Specimen_001_sample_006_008.fcs
 Live cells
 8425

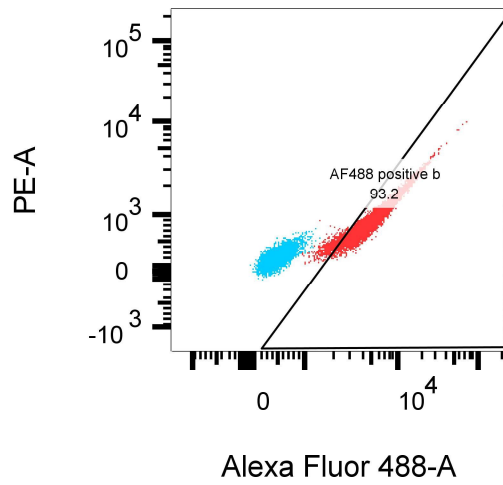
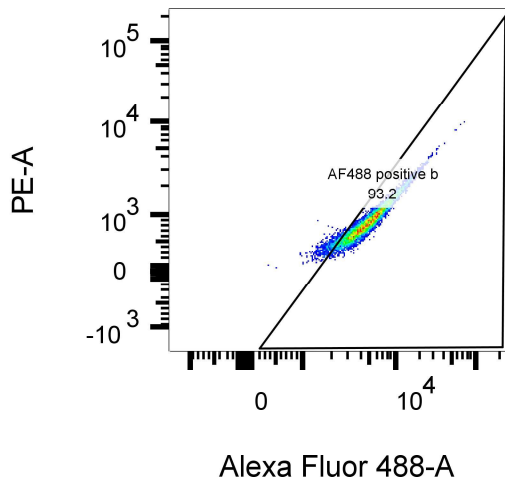


Live cells: Freq. of Total : 84.2

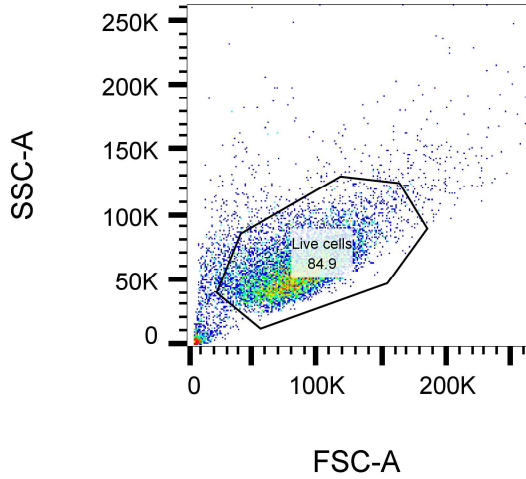
Specimen_001_sample_006_008.fcs
 Live cells
 8425

	Sample Name	Subset Name	Count
■	Specimen_001_sample_001_003.fcs	Live cells	8479
■	Specimen_001_sample_006_008.fcs	Live cells	8425

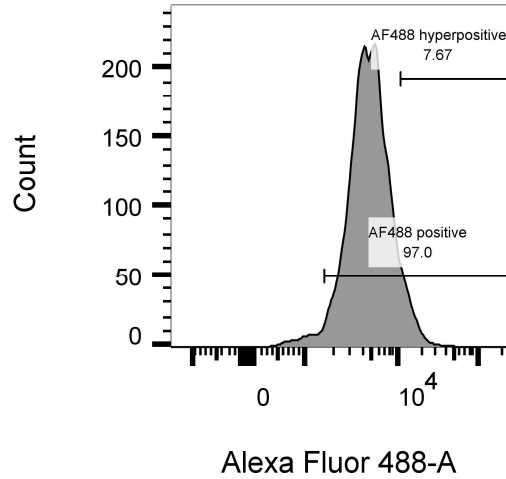
AF488 positive b: Freq. of Parent : 93.2



Specimen_001_sample_007_009.fcs
 Ungated
 10000



Specimen_001_sample_007_009.fcs
 Live cells
 8491

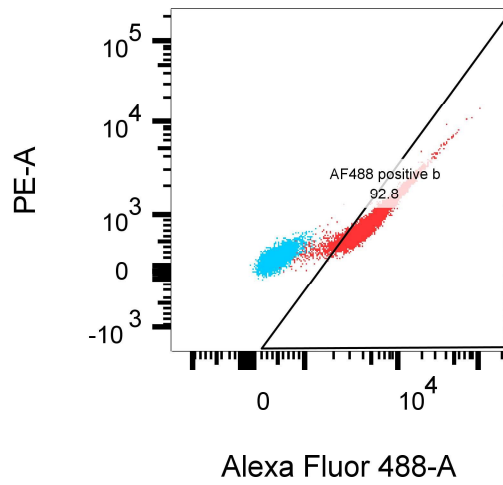
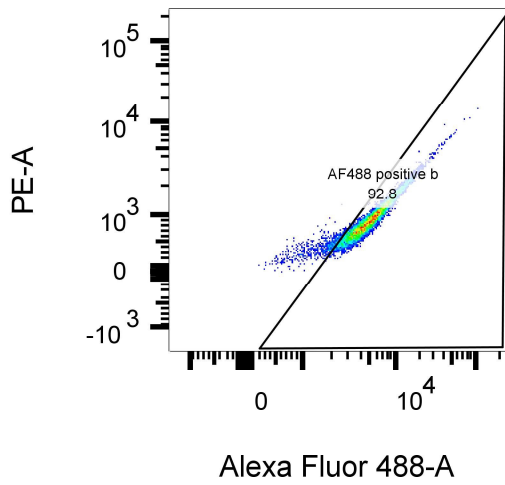


Live cells: Freq. of Total : 84.9

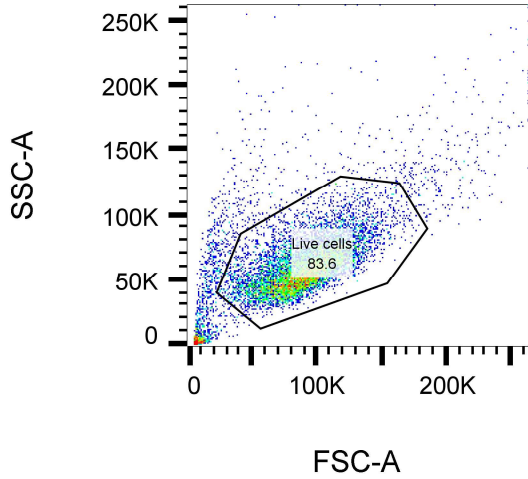
Specimen_001_sample_007_009.fcs
 Live cells
 8491

	Sample Name	Subset Name	Count
■	Specimen_001_sample_001_003.fcs	Live cells	8479
■	Specimen_001_sample_007_009.fcs	Live cells	8491

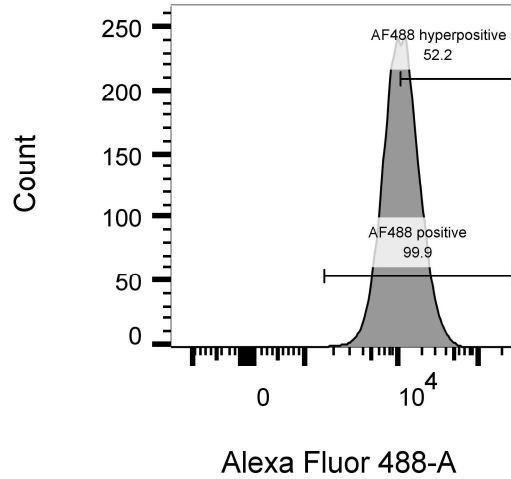
AF488 positive b: Freq. of Parent : 92.8



Specimen_001_sample_008_010.fcs
 Ungated
 10000



Specimen_001_sample_008_010.fcs
 Live cells
 8361

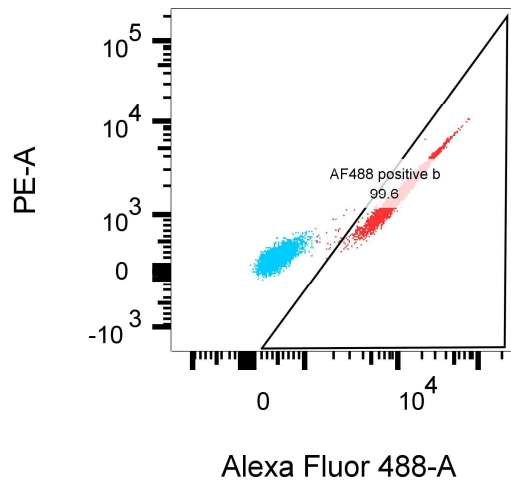
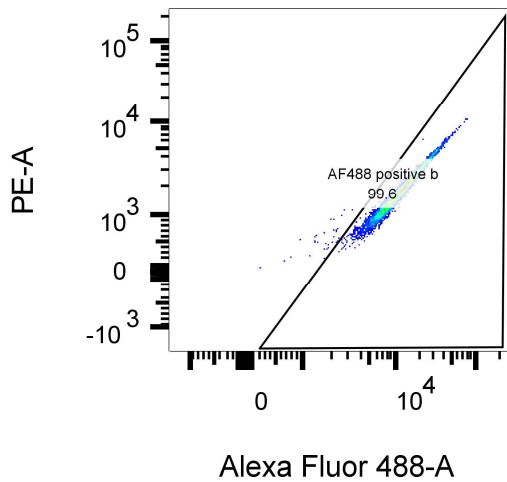


Live cells: Freq. of Total : 83.6

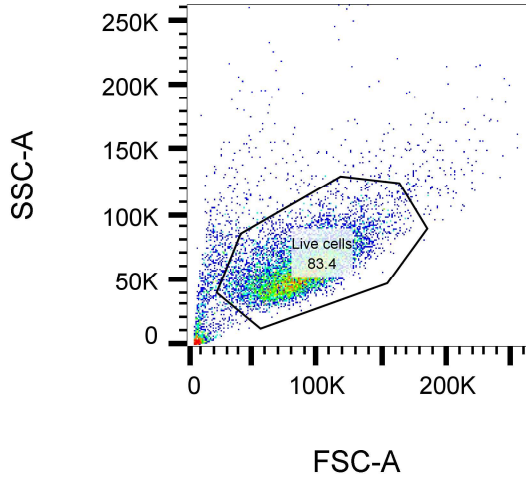
Specimen_001_sample_008_010.fcs
 Live cells
 8361

	Sample Name	Subset Name	Count
■	Specimen_001_sample_001_003.fcs	Live cells	8479
■	Specimen_001_sample_008_010.fcs	Live cells	8361

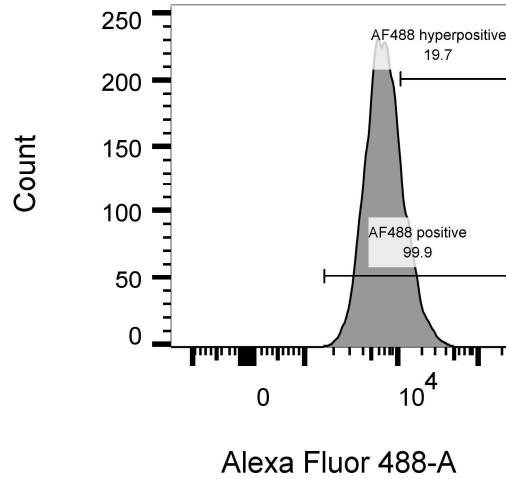
AF488 positive b: Freq. of Parent : 99.6



Specimen_001_sample_009_011.fcs
 Ungated
 10000



Specimen_001_sample_009_011.fcs
 Live cells
 8339

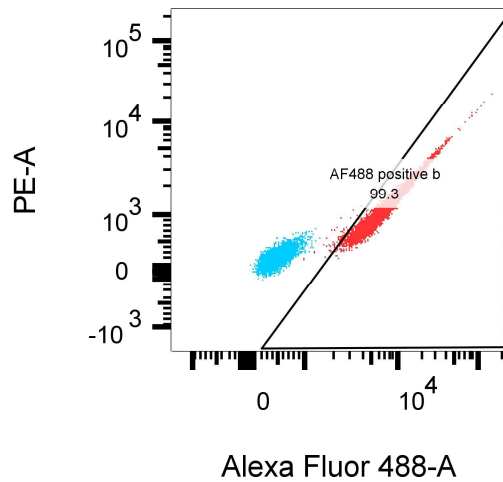
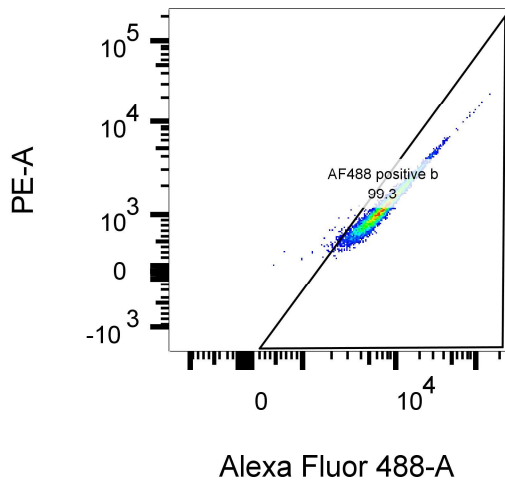


Live cells: Freq. of Total : 83.4

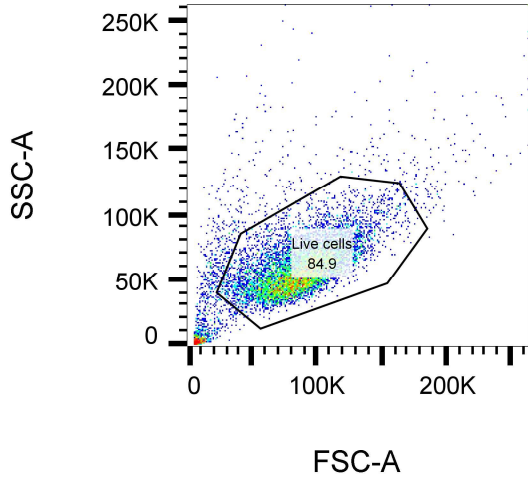
Specimen_001_sample_009_011.fcs
 Live cells
 8339

	Sample Name	Subset Name	Count
■	Specimen_001_sample_001_003.fcs	Live cells	8479
■	Specimen_001_sample_009_011.fcs	Live cells	8339

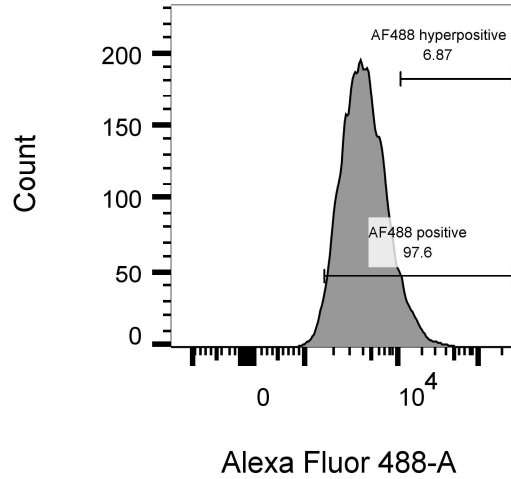
AF488 positive b: Freq. of Parent : 99.3



Specimen_001_sample_010_012.fcs
 Ungated
 10000



Specimen_001_sample_010_012.fcs
 Live cells
 8490

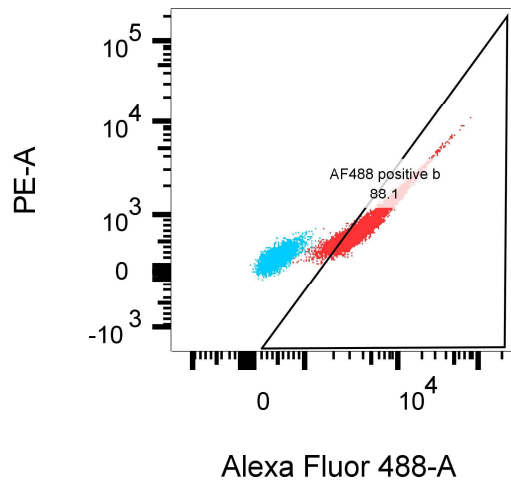
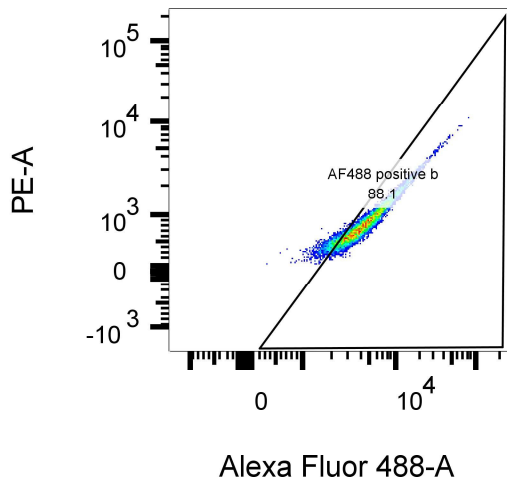


Live cells: Freq. of Total : 84.9

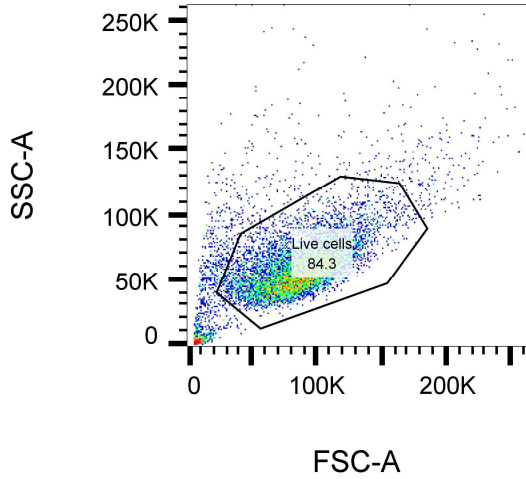
Specimen_001_sample_010_012.fcs
 Live cells
 8490

	Sample Name	Subset Name	Count
■	Specimen_001_sample_001_003.fcs	Live cells	8479
■	Specimen_001_sample_010_012.fcs	Live cells	8490

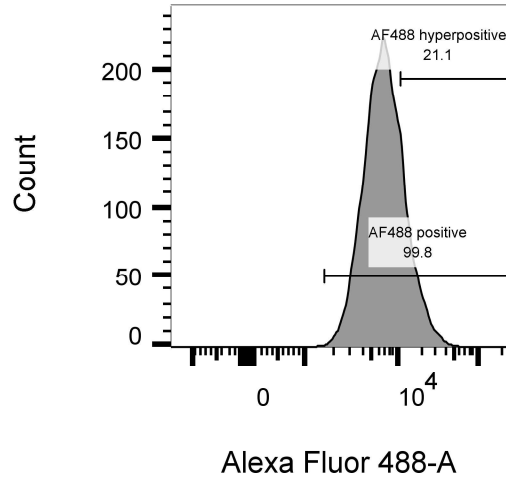
AF488 positive b: Freq. of Parent : 88.1



Specimen_001_sample_011_013.fcs
 Ungated
 10000



Specimen_001_sample_011_013.fcs
 Live cells
 8428

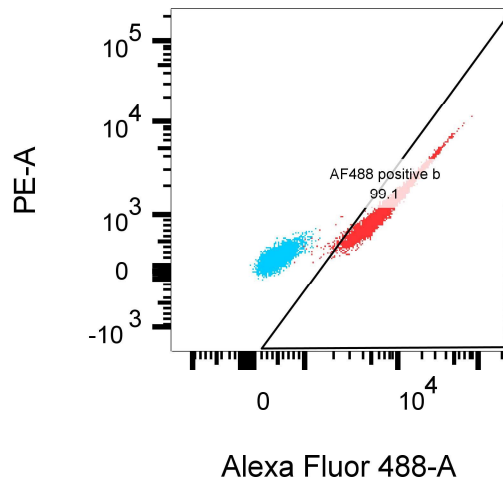
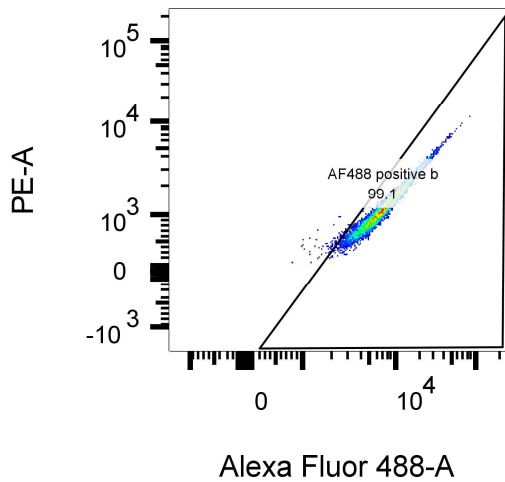


Live cells: Freq. of Total : 84.3

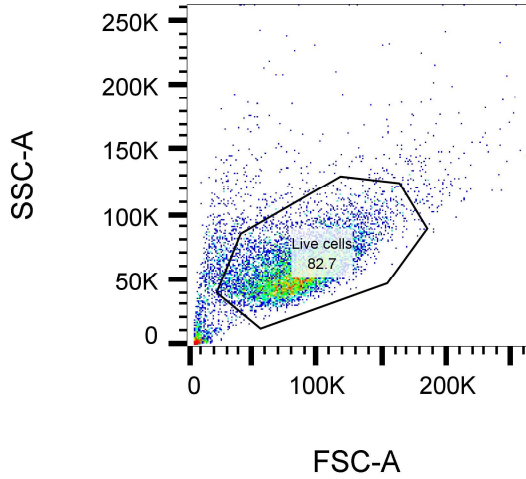
Specimen_001_sample_011_013.fcs
 Live cells
 8428

	Sample Name	Subset Name	Count
■	Specimen_001_sample_001_003.fcs	Live cells	8479
■	Specimen_001_sample_011_013.fcs	Live cells	8428

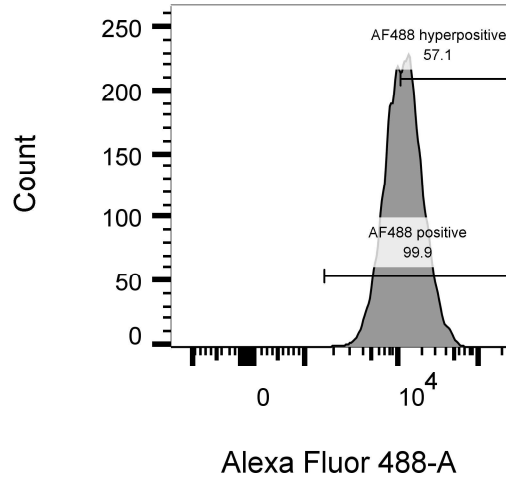
AF488 positive b: Freq. of Parent : 99.1



Specimen_001_sample_012_014.fcs
 Ungated
 10000



Specimen_001_sample_012_014.fcs
 Live cells
 8273

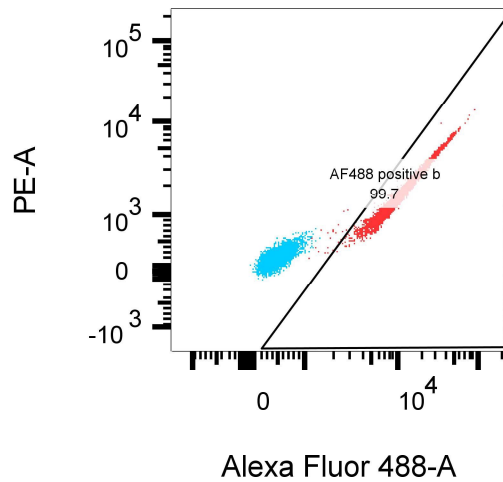
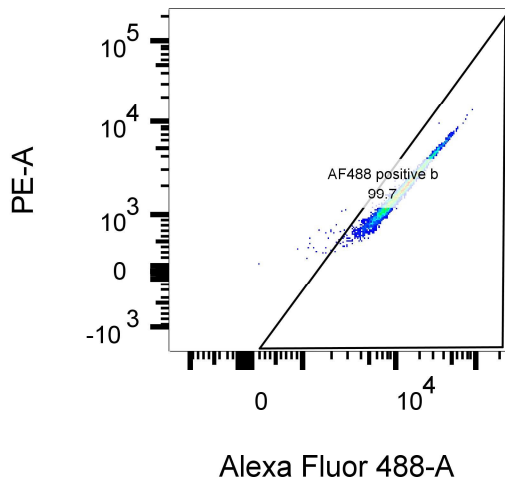


Live cells: Freq. of Total : 82.7

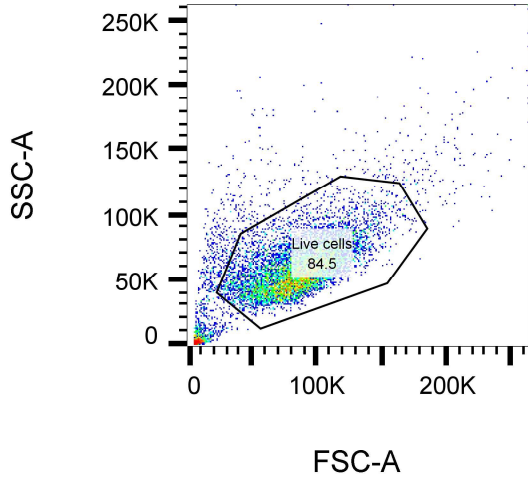
Specimen_001_sample_012_014.fcs
 Live cells
 8273

	Sample Name	Subset Name	Count
■	Specimen_001_sample_001_003.fcs	Live cells	8479
■	Specimen_001_sample_012_014.fcs	Live cells	8273

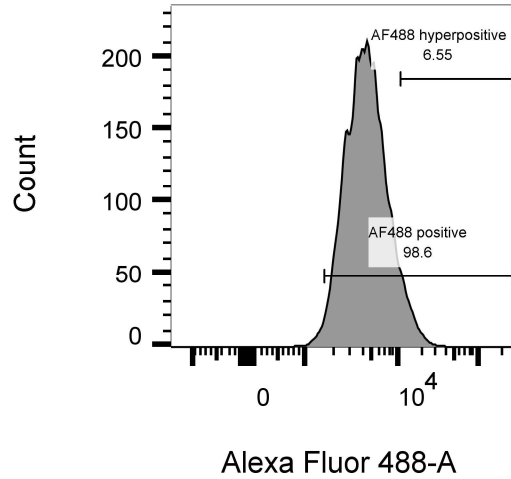
AF488 positive b: Freq. of Parent : 99.7



Specimen_001_sample_013_015.fcs
 Ungated
 10000



Specimen_001_sample_013_015.fcs
 Live cells
 8446

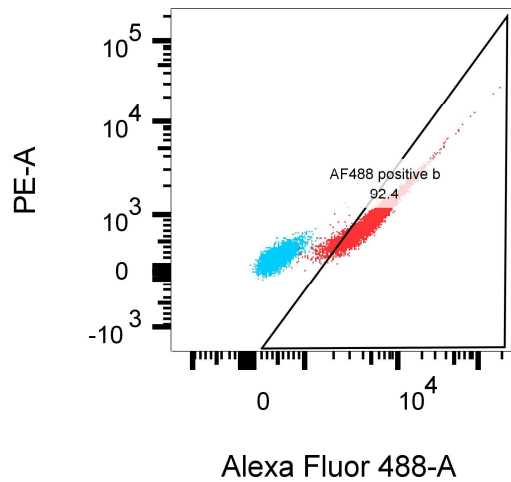
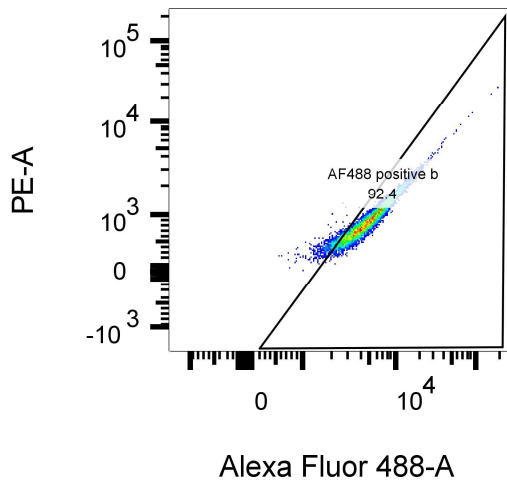


Live cells: Freq. of Total : 84.5

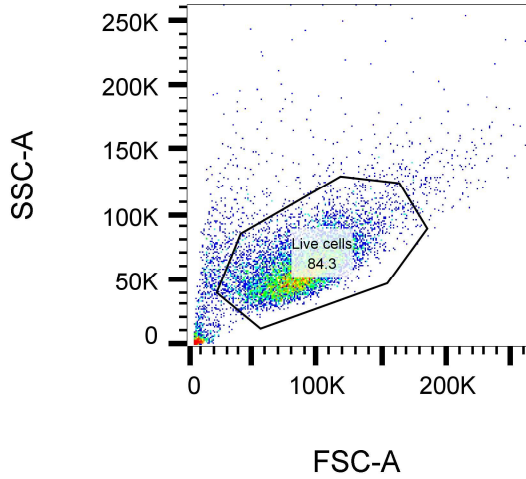
Specimen_001_sample_013_015.fcs
 Live cells
 8446

	Sample Name	Subset Name	Count
■	Specimen_001_sample_001_003.fcs	Live cells	8479
■	Specimen_001_sample_013_015.fcs	Live cells	8446

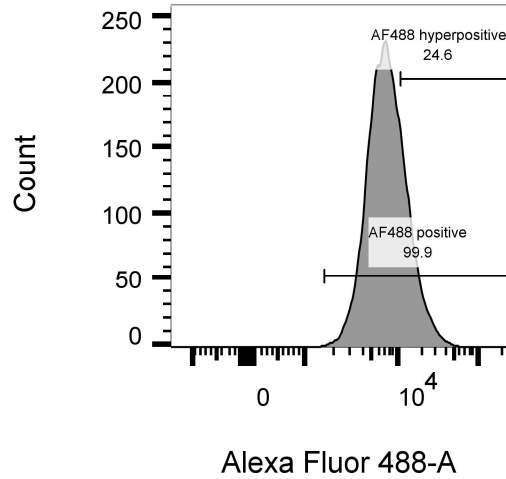
AF488 positive b: Freq. of Parent : 92.4



Specimen_001_sample_014_016.fcs
 Ungated
 10000



Specimen_001_sample_014_016.fcs
 Live cells
 8431

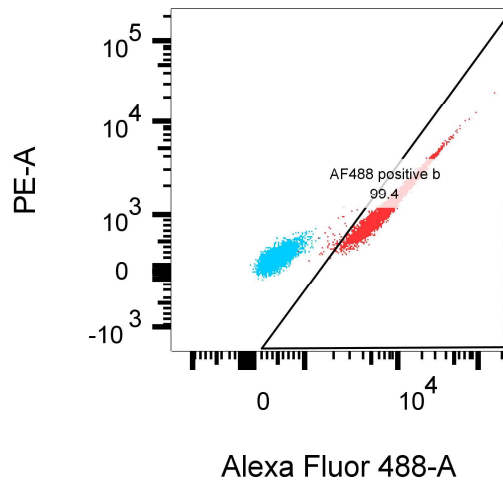
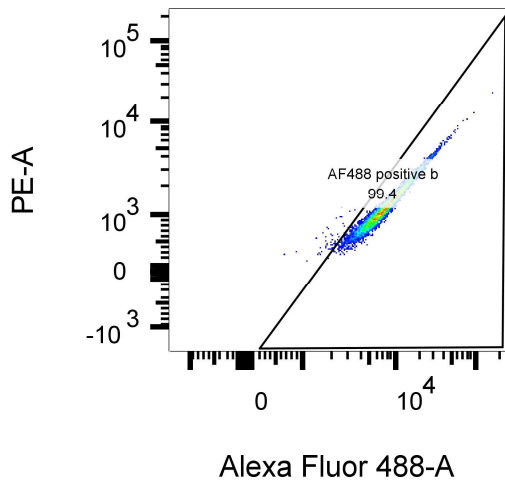


Live cells: Freq. of Total : 84.3

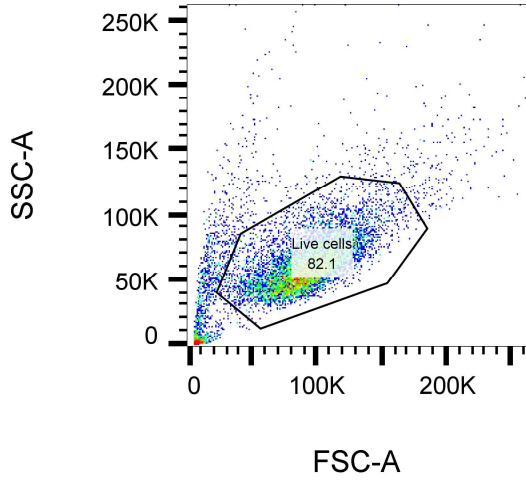
Specimen_001_sample_014_016.fcs
 Live cells
 8431

	Sample Name	Subset Name	Count
■	Specimen_001_sample_001_003.fcs	Live cells	8479
■	Specimen_001_sample_014_016.fcs	Live cells	8431

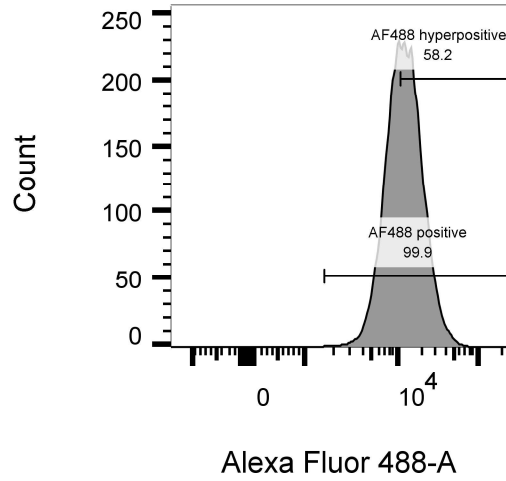
AF488 positive b: Freq. of Parent : 99.4



Specimen_001_sample_015_017.fcs
 Ungated
 10000



Specimen_001_sample_015_017.fcs
 Live cells
 8208

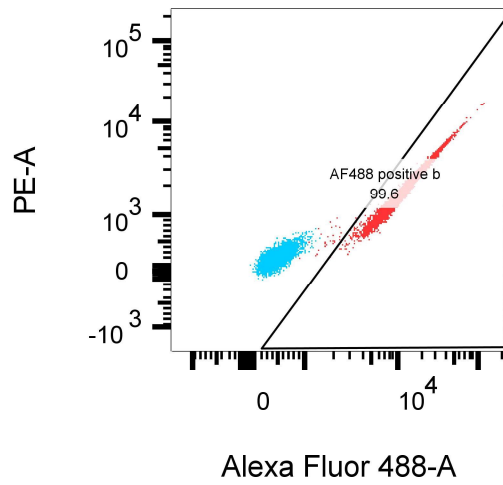
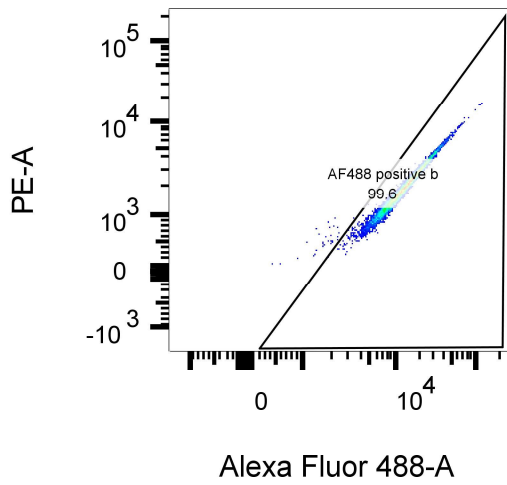


Live cells: Freq. of Total : 82.1

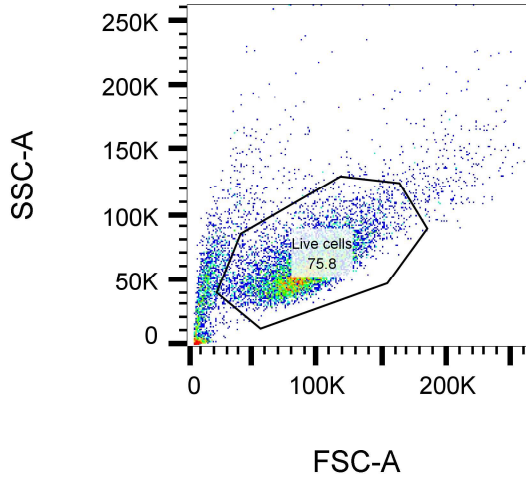
Specimen_001_sample_015_017.fcs
 Live cells
 8208

	Sample Name	Subset Name	Count
■	Specimen_001_sample_001_003.fcs	Live cells	8479
■	Specimen_001_sample_015_017.fcs	Live cells	8208

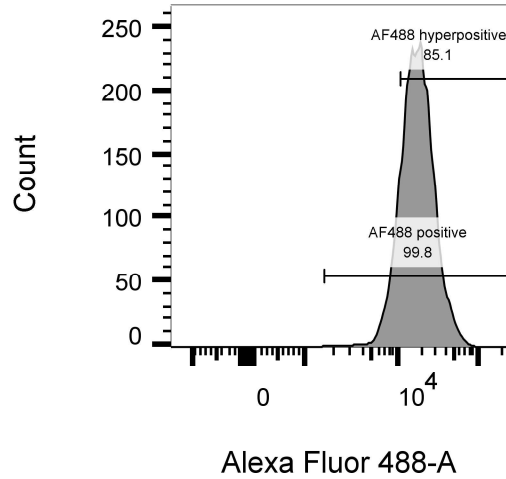
AF488 positive b: Freq. of Parent : 99.6



Specimen_001_sample_016_018.fcs
 Ungated
 10000



Specimen_001_sample_016_018.fcs
 Live cells
 7584

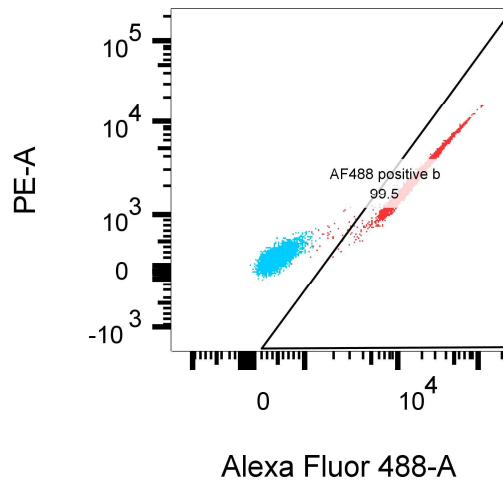
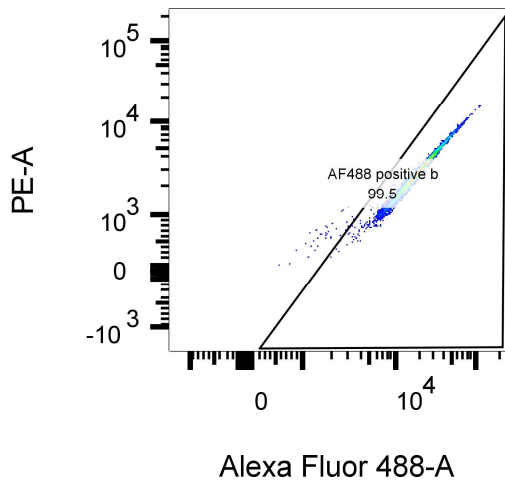


Live cells: Freq. of Total : 75.8

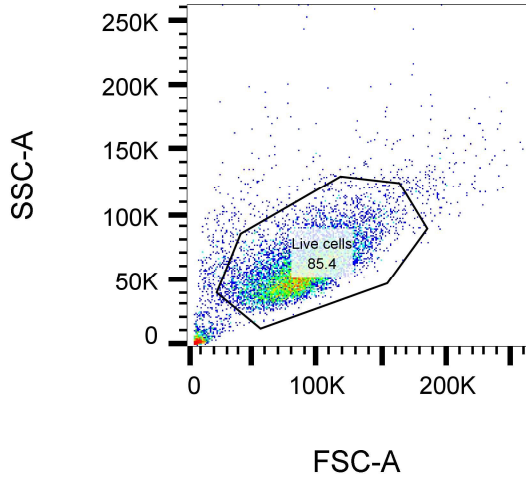
Specimen_001_sample_016_018.fcs
 Live cells
 7584

	Sample Name	Subset Name	Count
■	Specimen_001_sample_001_003.fcs	Live cells	8479
■	Specimen_001_sample_016_018.fcs	Live cells	7584

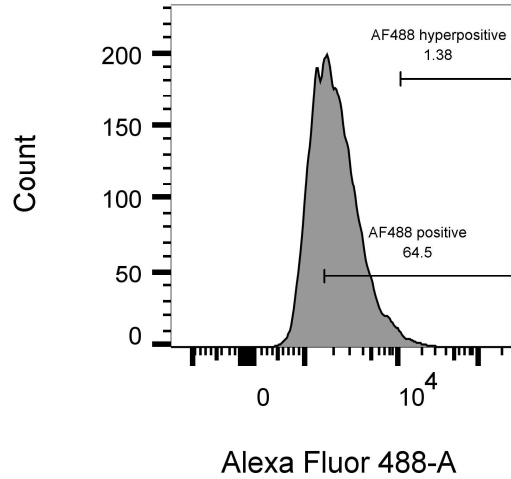
AF488 positive b: Freq. of Parent : 99.5



Specimen_001_sample_017_019.fcs
 Ungated
 10000



Specimen_001_sample_017_019.fcs
 Live cells
 8543

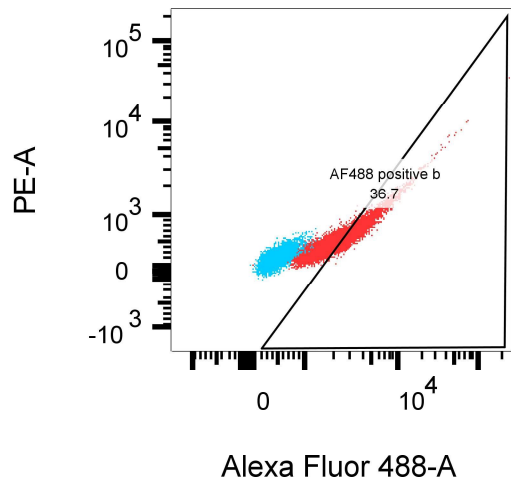
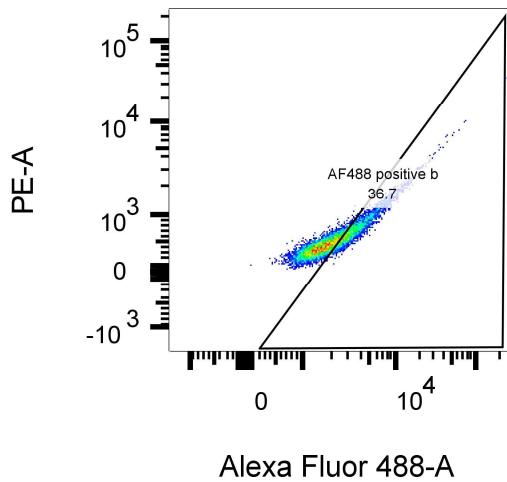


Live cells: Freq. of Total : 85.4

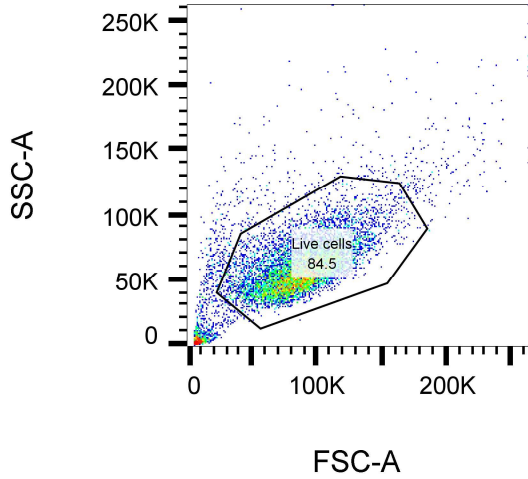
Specimen_001_sample_017_019.fcs
 Live cells
 8543

	Sample Name	Subset Name	Count
■	Specimen_001_sample_001_003.fcs	Live cells	8479
■	Specimen_001_sample_017_019.fcs	Live cells	8543

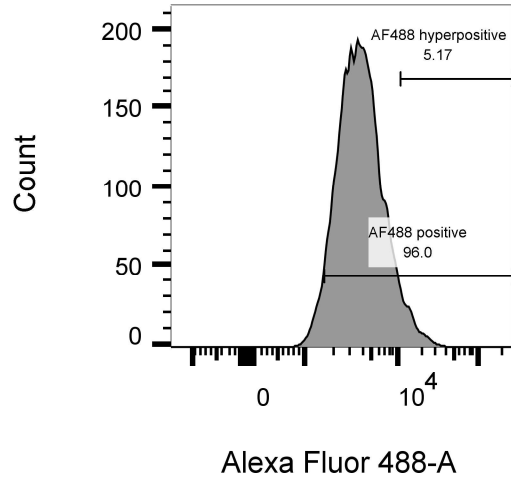
AF488 positive b: Freq. of Parent : 36.7



Specimen_001_sample_018_020.fcs
 Ungated
 10000



Specimen_001_sample_018_020.fcs
 Live cells
 8447

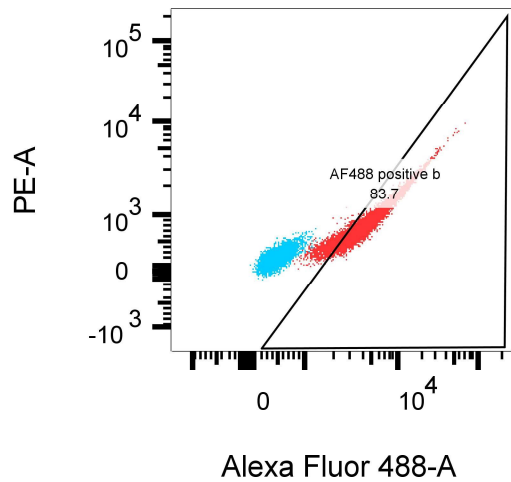
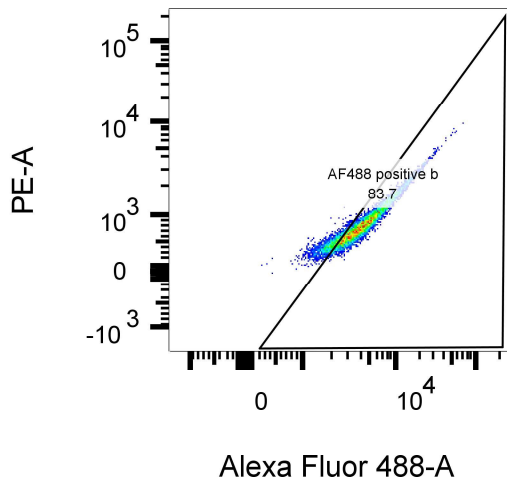


Live cells: Freq. of Total : 84.5

Specimen_001_sample_018_020.fcs
 Live cells
 8447

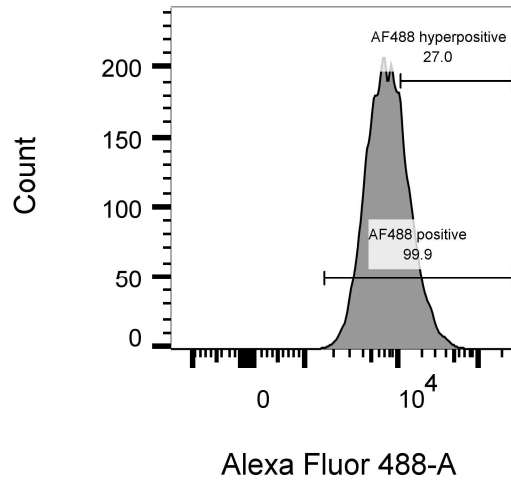
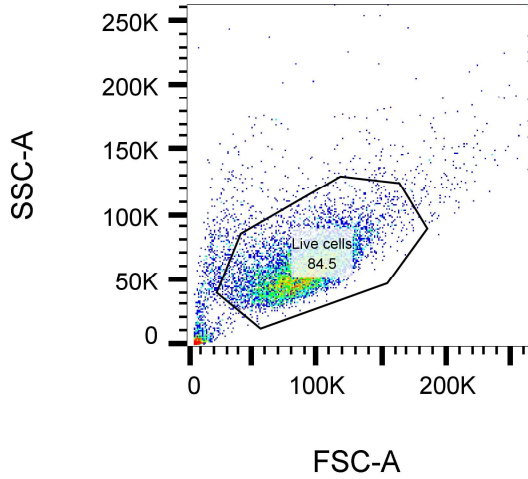
	Sample Name	Subset Name	Count
■	Specimen_001_sample_001_003.fcs	Live cells	8479
■	Specimen_001_sample_018_020.fcs	Live cells	8447

AF488 positive b: Freq. of Parent : 83.7



Specimen_001_sample_019_021.fcs
 Ungated
 10000

Specimen_001_sample_019_021.fcs
 Live cells
 8447

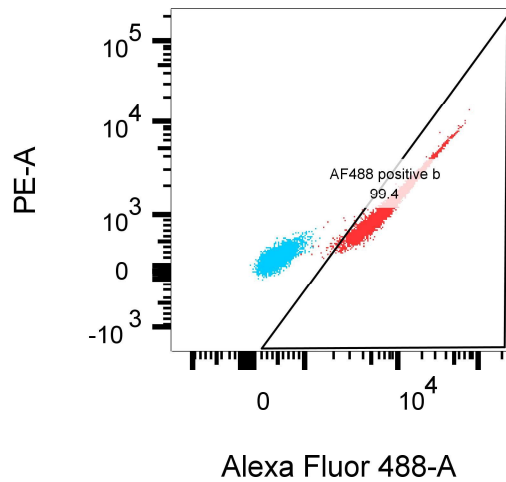
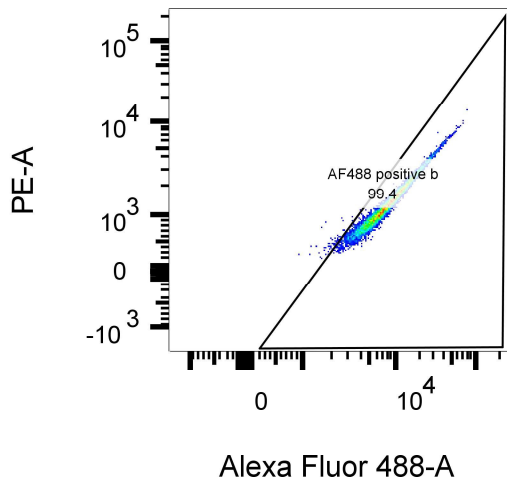


Live cells: Freq. of Total : 84.5

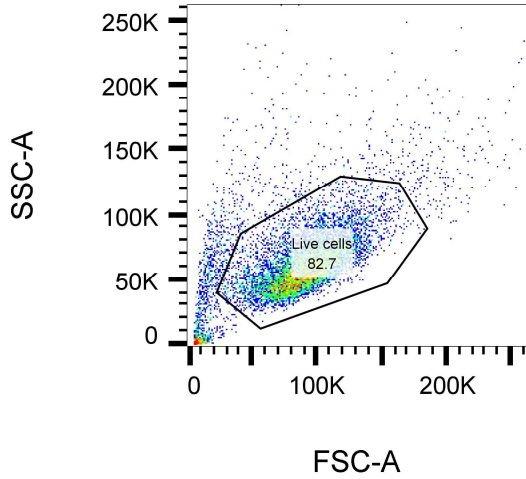
Specimen_001_sample_019_021.fcs
 Live cells
 8447

	Sample Name	Subset Name	Count
■	Specimen_001_sample_001_003.fcs	Live cells	8479
■	Specimen_001_sample_019_021.fcs	Live cells	8447

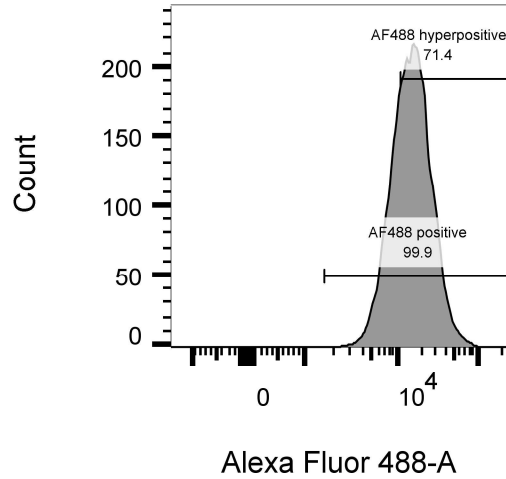
AF488 positive b: Freq. of Parent : 99.4



Specimen_001_sample_020_022.fcs
 Ungated
 10000



Specimen_001_sample_020_022.fcs
 Live cells
 8274

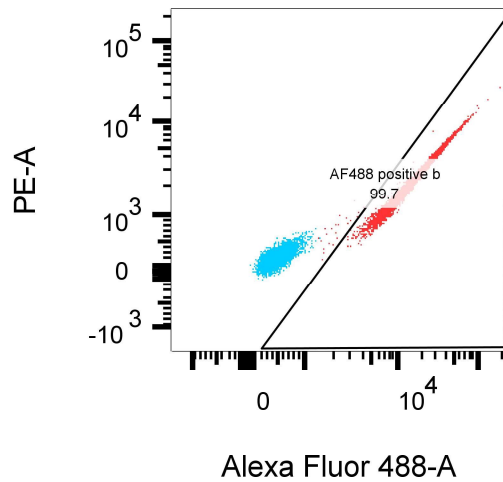
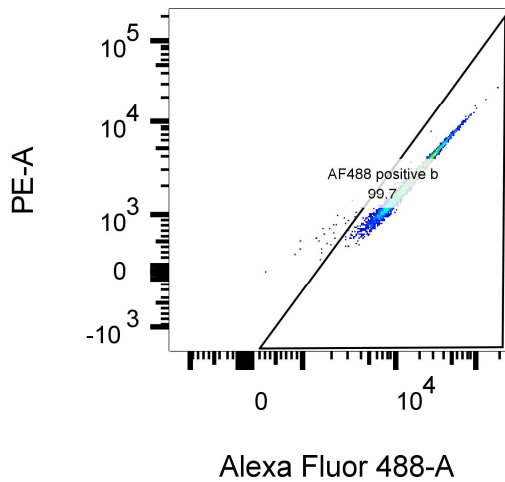


Live cells: Freq. of Total : 82.7

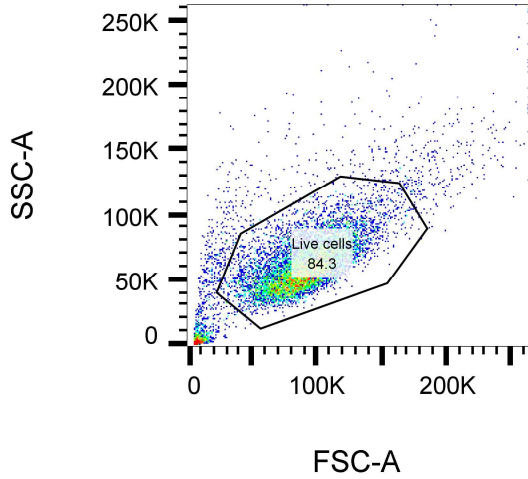
Specimen_001_sample_020_022.fcs
 Live cells
 8274

	Sample Name	Subset Name	Count
■	Specimen_001_sample_001_003.fcs	Live cells	8479
■	Specimen_001_sample_020_022.fcs	Live cells	8274

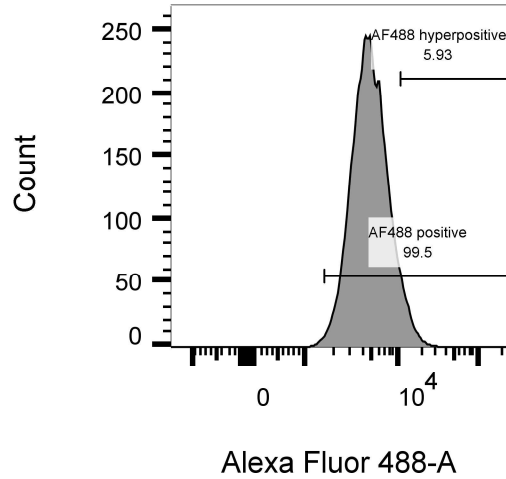
AF488 positive b: Freq. of Parent : 99.7



Specimen_001_sample_021_023.fcs
 Ungated
 10000



Specimen_001_sample_021_023.fcs
 Live cells
 8434

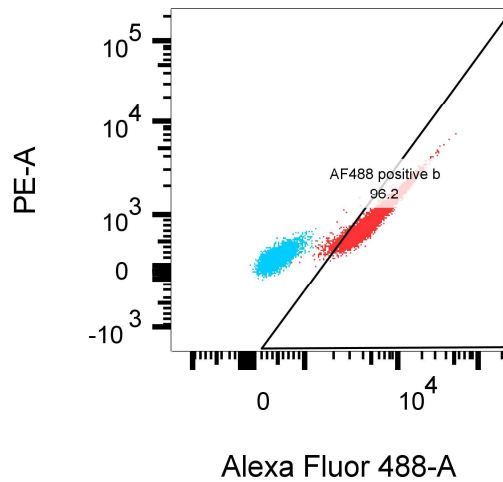
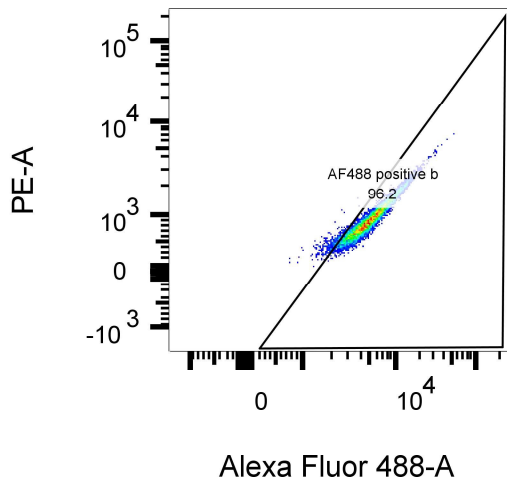


Live cells: Freq. of Total : 84.3

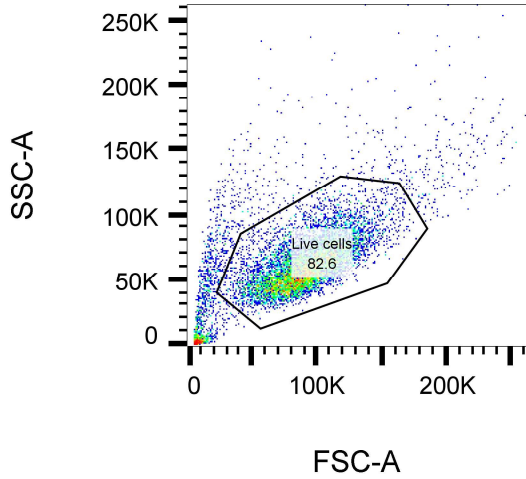
Specimen_001_sample_021_023.fcs
 Live cells
 8434

	Sample Name	Subset Name	Count
■	Specimen_001_sample_001_003.fcs	Live cells	8479
■	Specimen_001_sample_021_023.fcs	Live cells	8434

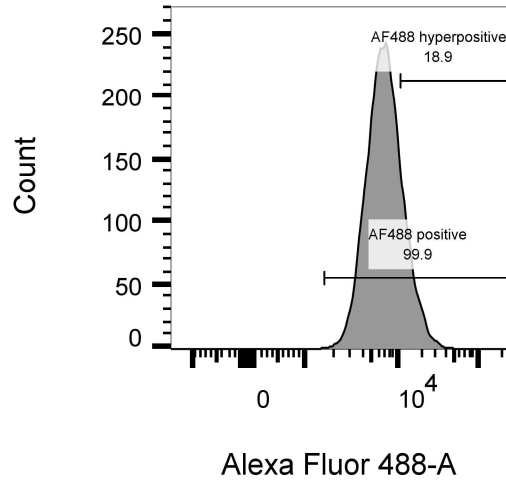
AF488 positive b: Freq. of Parent : 96.2



Specimen_001_sample_022_024.fcs
 Ungated
 10000



Specimen_001_sample_022_024.fcs
 Live cells
 8259

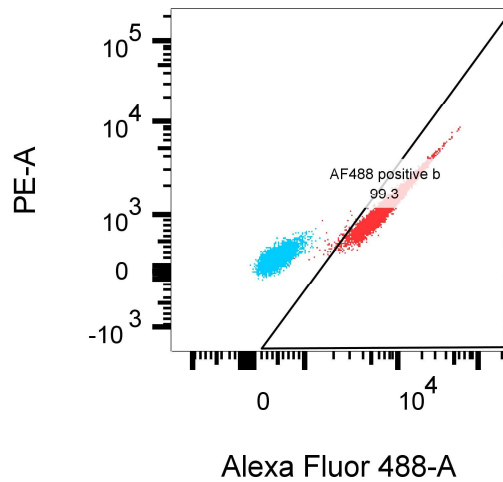
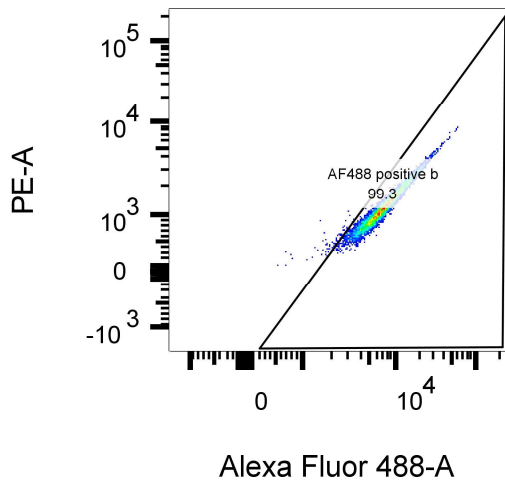


Live cells: Freq. of Total : 82.6

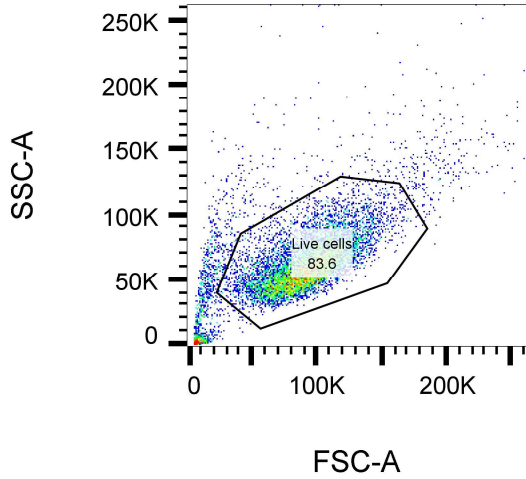
Specimen_001_sample_022_024.fcs
 Live cells
 8259

	Sample Name	Subset Name	Count
■	Specimen_001_sample_001_003.fcs	Live cells	8479
■	Specimen_001_sample_022_024.fcs	Live cells	8259

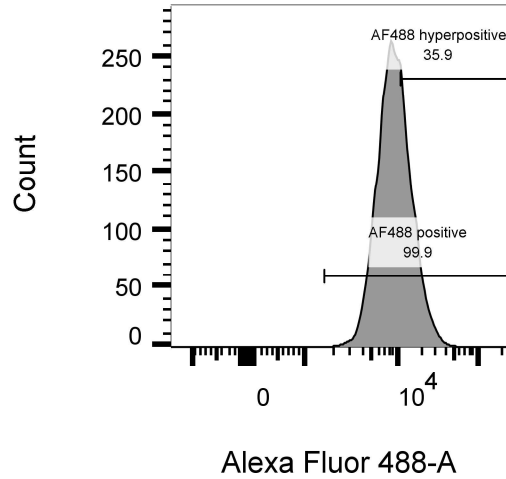
AF488 positive b: Freq. of Parent : 99.3



Specimen_001_sample_023_025.fcs
 Ungated
 10000



Specimen_001_sample_023_025.fcs
 Live cells
 8357

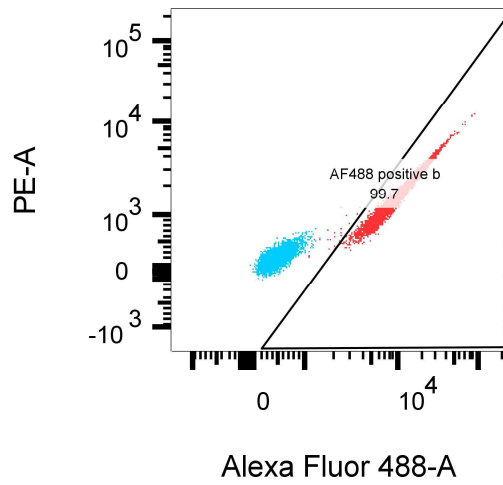
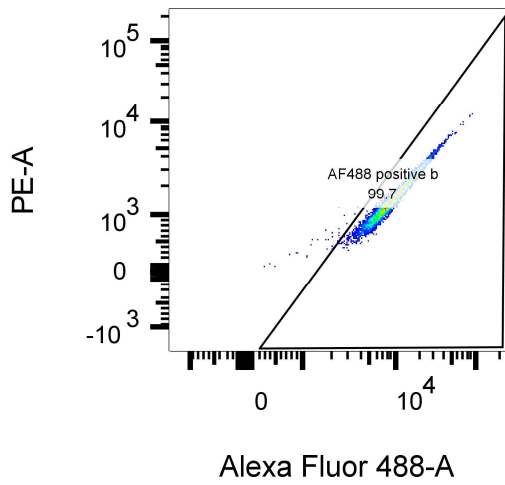


Live cells: Freq. of Total : 83.6

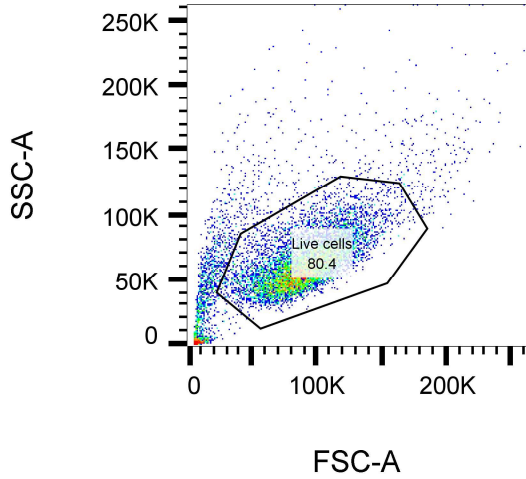
Specimen_001_sample_023_025.fcs
 Live cells
 8357

	Sample Name	Subset Name	Count
■	Specimen_001_sample_001_003.fcs	Live cells	8479
■	Specimen_001_sample_023_025.fcs	Live cells	8357

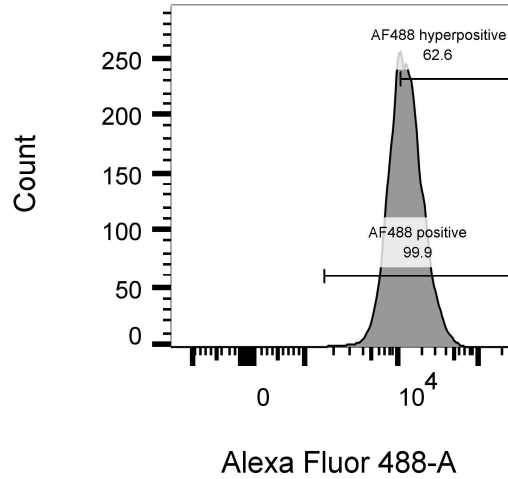
AF488 positive b: Freq. of Parent : 99.7



Specimen_001_sample_024_026.fcs
 Ungated
 10000



Specimen_001_sample_024_026.fcs
 Live cells
 8042



Live cells: Freq. of Total : 80.4

Specimen_001_sample_024_026.fcs
 Live cells
 8042

	Sample Name	Subset Name	Count
■	Specimen_001_sample_001_003.fcs	Live cells	8479
■	Specimen_001_sample_024_026.fcs	Live cells	8042

AF488 positive b: Freq. of Parent : 99.7

