

# The Alan Turing Institute

---

## *The Turing Way:* Collaboratively Learning and Sharing Research Skills

Malvika Sharan

Pronouns: she/her



---

# Shared Knowledge



---

# Shared Knowledge

To make data-driven decisions with the help of research communities



---

# Shared Knowledge

To make data-driven decisions with the help of **research communities**



---

# Data Science Community

**Brings together** all stakeholders  
to practice **research skills**

---

# Data Science Community

**Brings together** all stakeholders to practice **research skills** and foster a **culture of continuous learning**.

---

# Data Science Community

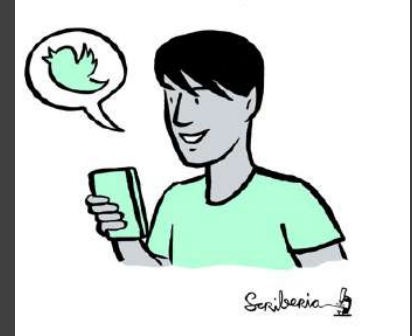
**Brings together** all stakeholders to practice **research skills** and foster a **culture of continuous learning**.



---

# This talk is

- About open research & communities





---

# Time for Open Communities

- About open research & communities
- Anyone can lead an ‘Open’ project



---

# Time for Open Communities

- About open research & communities
- Anyone can lead an ‘Open’ project
- *Also more people may face barriers to open research, if not done right.*



# Barriers to Open Research

- Reward system
- Novel findings
- Publication cost
- Training and skill transfer
- Leadership
- Institutions (often)
- Lack of trust



---

# Open Research communities

*Open community refers to collaborative efforts in Open Research*

---

# Barriers to Open Research communities

*Open community refers to collaborative efforts in Open Research that anyone can join and contribute to.*

---

# Open Research communities

*Open community refers to collaborative efforts in Open Research that anyone can join and contribute to.*

*The direction and goals are determined collaboratively.*

---

# Open Research communities

*Open community refers to collaborative efforts in Open Research that anyone can join and contribute to.*

*The direction and goals are determined collaboratively.*

*The resulting work is made available under a free license.*

---

# Barriers to Open Research communities

*Open community refers to collaborative efforts in Open Research that anyone can join and contribute to.*

*The direction and goals are determined collaboratively.*

*The resulting work is made available under a free license.*



---

# The biggest barrier is a lack of open & inclusive culture



*Christie Bahlai, Assistant Professor, Kent University*

---

# Why invest in community culture?

- Common project goals
- Diverse backgrounds & expectations
- Together form a culture!



---

# Why invest in community culture?

- Common project goals
- Diverse backgrounds & expectations
- Together form a culture!

*“You, as a project leader, must take initiative with regards to what culture you want to foster. If not, a culture will develop without you.” - Karin Lagesen*



Open Research  
Communities must be  
**inclusive  
by design.**

Openness can not be  
an afterthought.



---

# *The Turing Way:*

A community for  
collaboratively learning and  
sharing research skills

Community Manager – Research Associate



---

# *The Turing Way*



An **Open Source** project that involves and supports its **diverse members** of different skills and backgrounds to ensure that data science is **beneficial for everyone**.

---

# The Turing Way

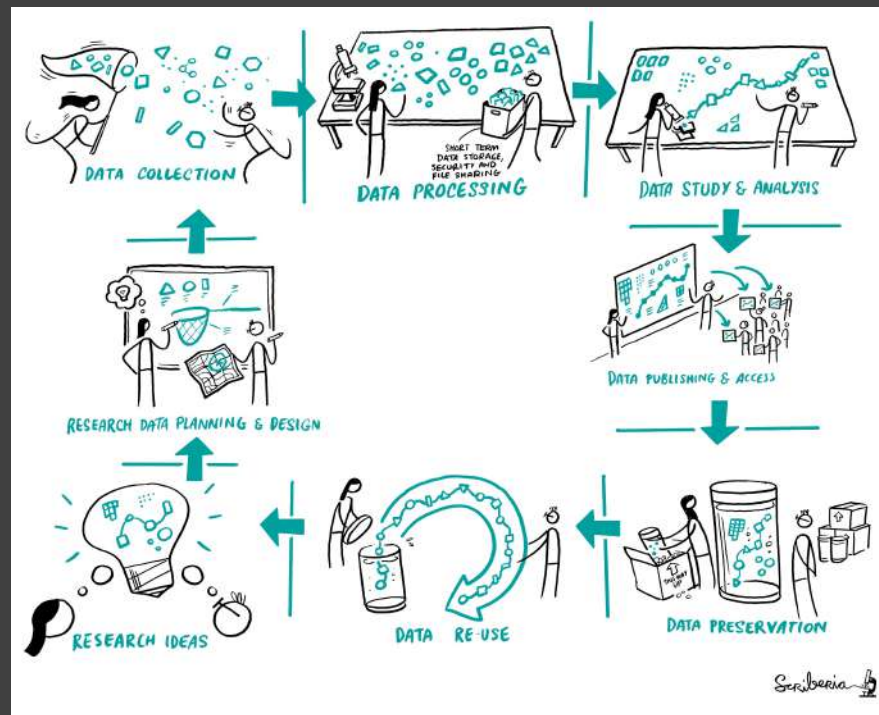


Kirstie Whitaker  
*Program Lead for Tools,  
Practices and Systems*

*The moonshot goal of the project is to make  
reproducible research "too easy not to do"*

# A book on reproducibility

Same analysis steps on the same dataset produces same answer

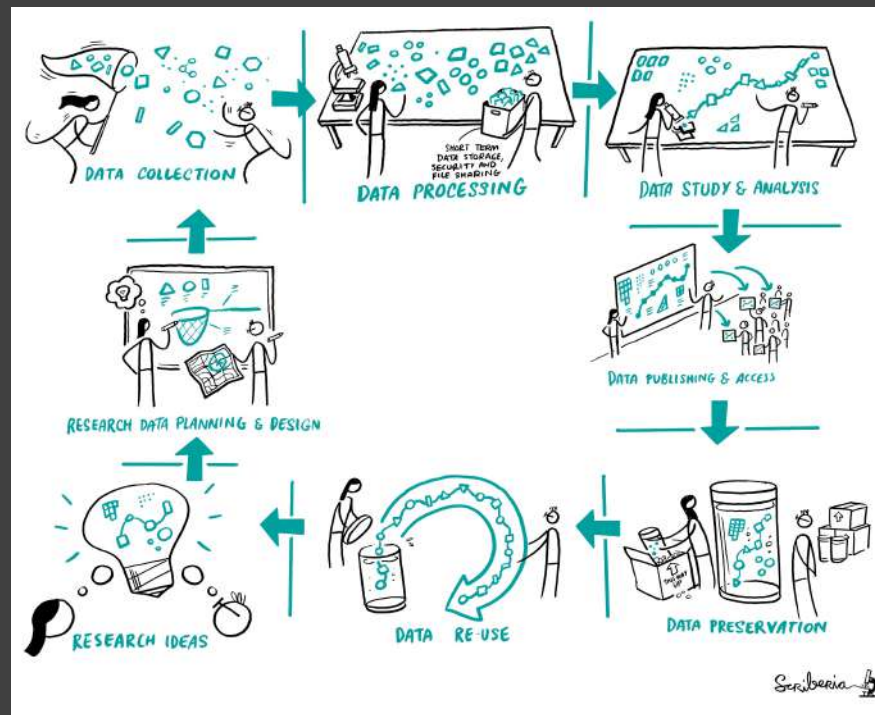




# A book on reproducibility

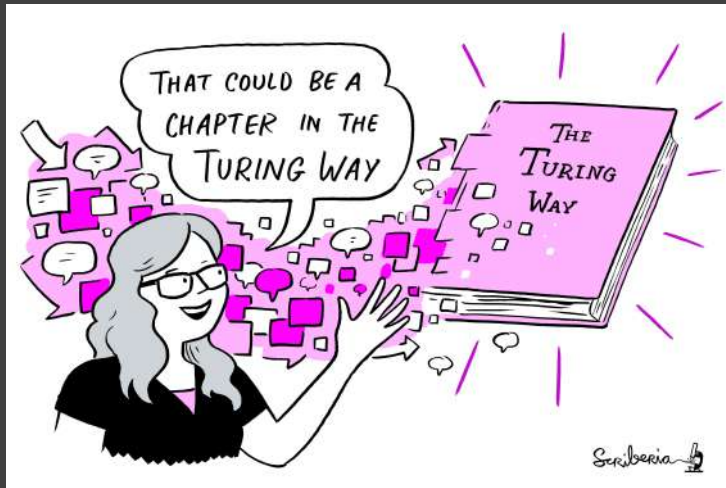
Same analysis steps on the same dataset produces same answer

This process is overwhelming.



---

# The Turing Way



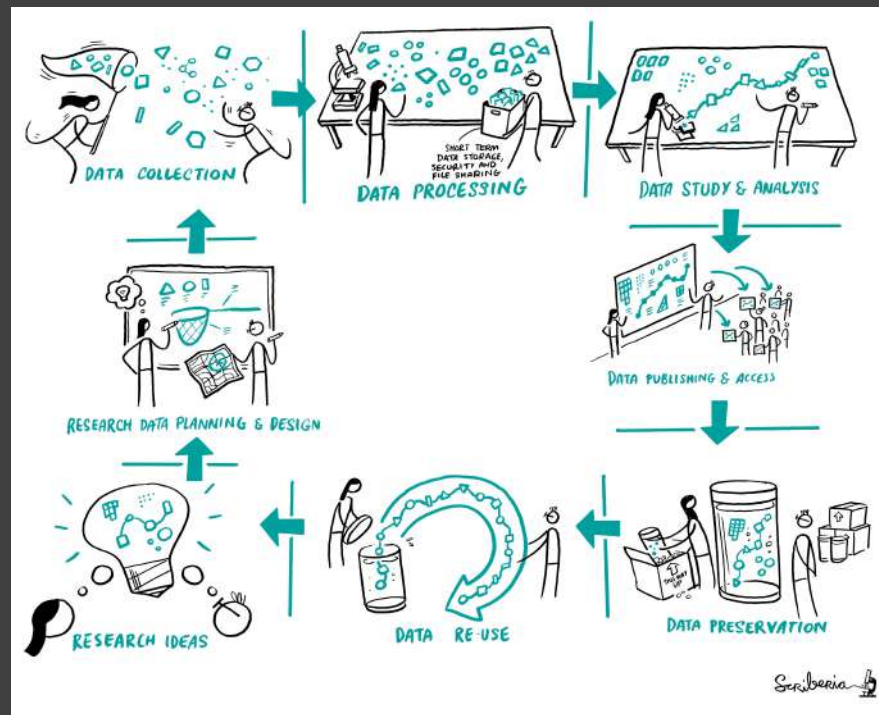
*“Literally anyone can contribute to The Turing Way. That’s the special sauce of the project.”*

# A book on reproducibility

Same analysis steps on the same dataset produces same answer

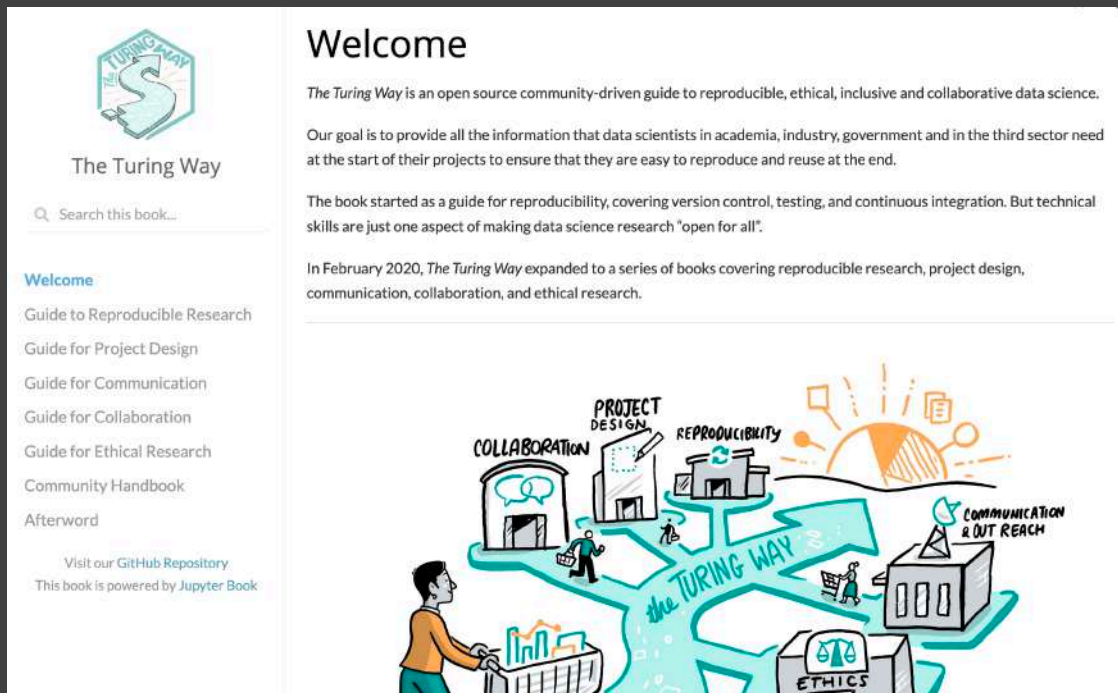
This process is overwhelming.

1 year, >20 chapters, a growing community of diverse stakeholders.



# Expanding Scope

*It's about the journey to reproducibility.*



The screenshot shows the homepage of 'The Turing Way'. At the top left is the logo, a stylized 'S' with 'THE TURING WAY' written around it. Below the logo is the title 'The Turing Way' and a search bar. A navigation menu lists various guides: 'Welcome', 'Guide to Reproducible Research', 'Guide for Project Design', 'Guide for Communication', 'Guide for Collaboration', 'Guide for Ethical Research', 'Community Handbook', and 'Afterword'. At the bottom of the menu are links to the 'GitHub Repository' and a note that the book is powered by 'Jupyter Book'. The main content area has a 'Welcome' heading followed by three paragraphs of text. The bottom of the page features a colorful illustration of a person pushing a shopping cart through a path labeled 'the TURING WAY'. The path branches into several buildings representing different aspects of data science: 'COLLABORATION', 'PROJECT DESIGN', 'REPRODUCIBILITY', 'COMMUNICATION & OUT REACH', and 'ETHICS'. The background of the illustration includes a sun, a bar chart, and a person walking.

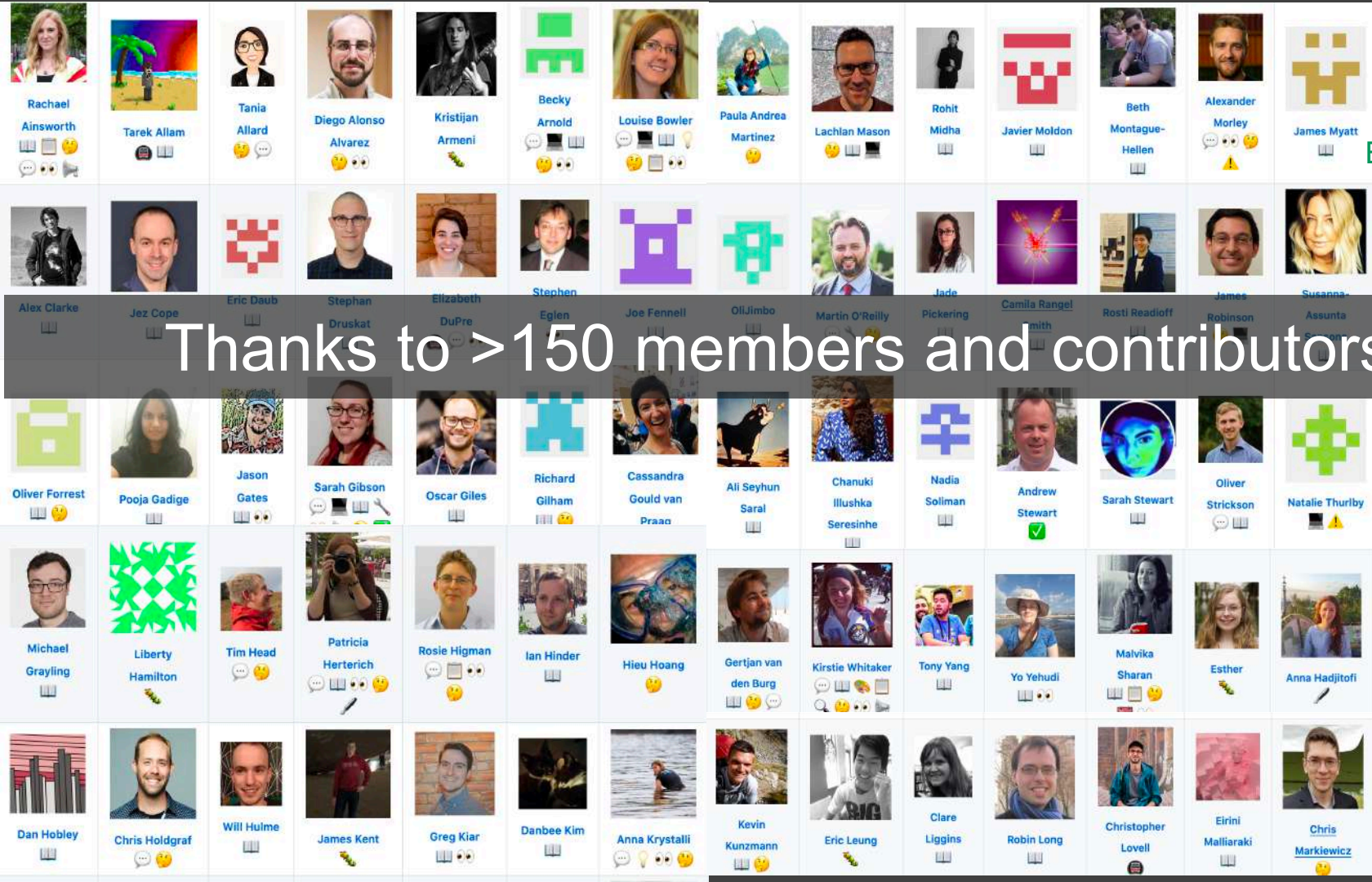
## Welcome

The *Turing Way* is an open source community-driven guide to reproducible, ethical, inclusive and collaborative data science.

Our goal is to provide all the information that data scientists in academia, industry, government and in the third sector need at the start of their projects to ensure that they are easy to reproduce and reuse at the end.

The book started as a guide for reproducibility, covering version control, testing, and continuous integration. But technical skills are just one aspect of making data science research "open for all".

In February 2020, *The Turing Way* expanded to a series of books covering reproducible research, project design, communication, collaboration, and ethical research.



Wall of all Contributors

Bot's symbols

Thanks to >150 members and contributors!

- eventOrganizing
- financial
- fundingFinding
- ideas
- review
- security
- tool
- translation
- test
- tutorial
- talk

---

# Building a community culture



---

# Open Leadership



## Understanding

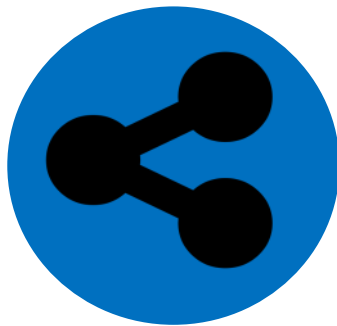
Your work is clear, authentic  
and widely accessible

---

# Open Leadership



**Understanding**



**Sharing**

Your work can be adapted,  
reproduced, and built upon

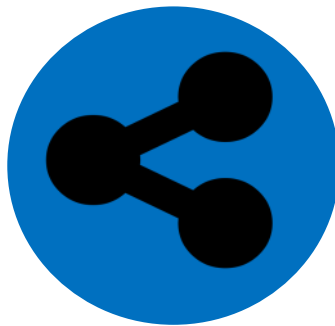


---

# Open Leadership



**Understanding**



**Sharing**



**Participation & Inclusion**

Creates a shared ownership  
that inspires contributions

---

The Turing Way Promotes

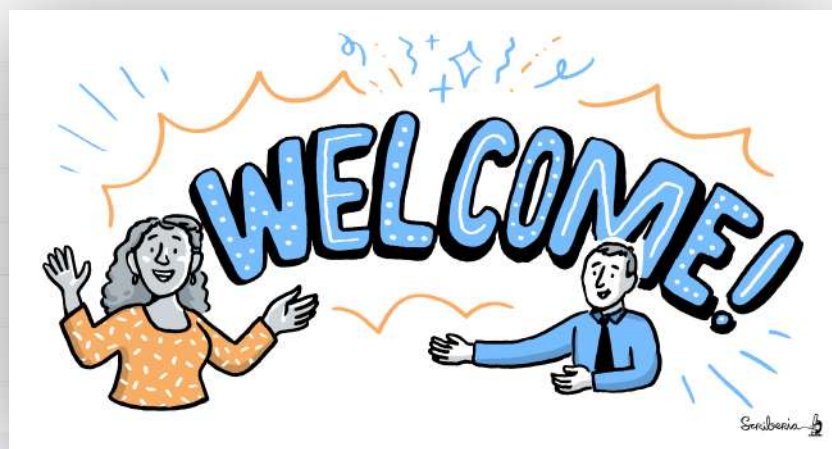
# a culture of collaboration

Every little bit helps.



Scriberia

📁 .github	Remove prettier configuration	
📁 book	minor update	
📁 communications	Fix typos	
📁 conferences	Add KW formatting pedantry	
📁 project_management	Update online-collaboration-cafe.md	
📁 templates	Updating Github templates	
📁 tests	Add "et cetera" as a deprecated Latinism	
📁 workshops	Remove mis-pasted text	
📄 .all-contributorsrc	Merge pull request #991 from alan-turing-institute/all-contributors/a...	5 days ago
📄 .gitignore	ignore pptx in workshop folder	9 months ago
📄 .travis.yml	add html-proof file again	last month
📄 <u>CODE_OF_CONDUCT.md</u>	her -> their	6 months ago
📄 <u>CONTRIBUTING.md</u>	Update CONTRIBUTING.md	2 months ago
📄 GOVERNANCE.md	Read through months later	5 months ago
📄 LICENSE.md	Fix typo in licence	2 months ago
📄 <u>README.md</u>	Merge pull request #991 from alan-turing-institute/all-contributors/a...	5 days ago
📄 book_skeleton.md	Update book_skeleton.md	13 months ago
📄 contributors.md	Add myself to contributors.md	11 months ago
📄 tips_and_tricks_survey.md	Update tips_and_tricks_survey.md	14 months ago
📄 ways_of_working.md	Adjust team contact section	5 months ago



**GitHub:**  
<https://github.com/alan-turing-institute/the-turing-way>

# Mentored Contributions

---



*Collaboration Cafés  
& Co-working Calls*



*Book Dash Events*

# Pathways of Engagement

---



*Maintain resources*



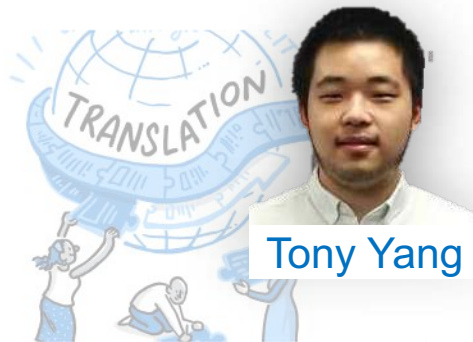
*Discuss ideas*



*Fix bugs*



*Support contributors*



*Help translate*



*Improve our culture*

# Meeting where you are!

---



---

# The Alan Turing Institute

## Acknowledgements:

- Kirstie Whitaker, Whitaker Team Members
- *The Turing Way* community, friends & collaborators
- Book: [the-turing-way.netlify.com](http://the-turing-way.netlify.com)
- Twitter: [twitter.com/turingway](https://twitter.com/turingway)
- Newsletter: [tinyletter.com/TuringWay](https://tinyletter.com/TuringWay)
- Chat: [gitter.im/alan-turing-institute/the-turing-way](https://gitter.im/alan-turing-institute/the-turing-way)
- GitHub: [github.com/alan-turing-institute/the-turing-way](https://github.com/alan-turing-institute/the-turing-way)
- Original artwork by Scriberia: <https://doi.org/10.5281/zenodo.3332808>

