

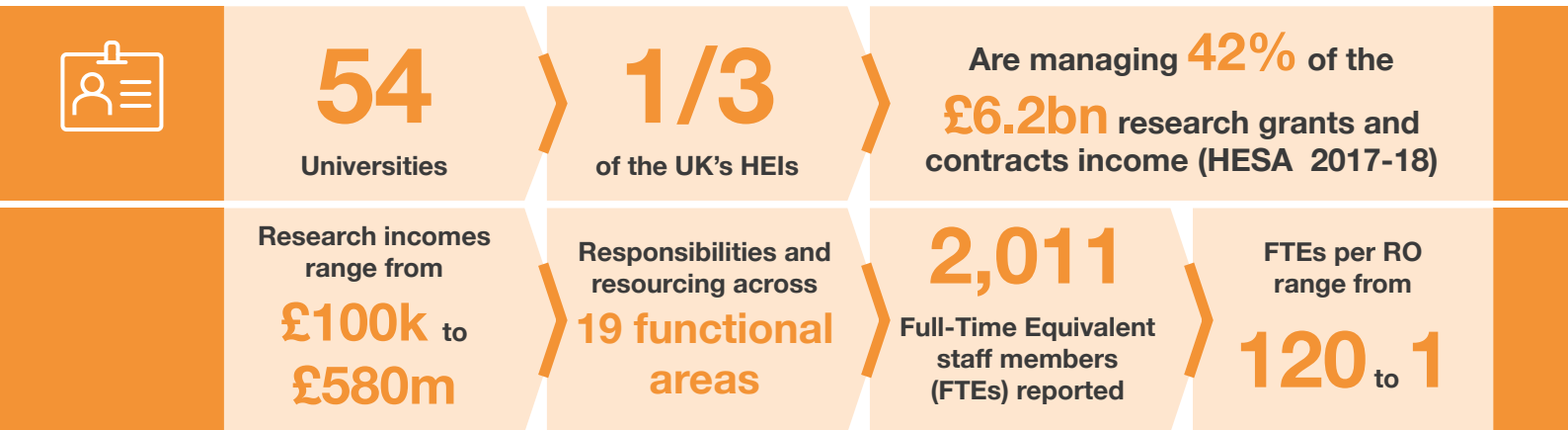
ARMA Research Office Survey 2020



A major survey of directors of UK research offices: structures, staffing and trends

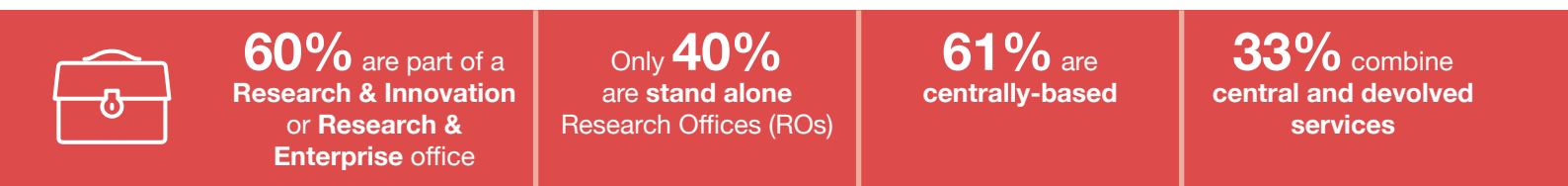
The survey reflects the challenging and evolving landscape for the research management profession, driven by complexity, scale and a hugely varied set of compliance requirements.

The participants



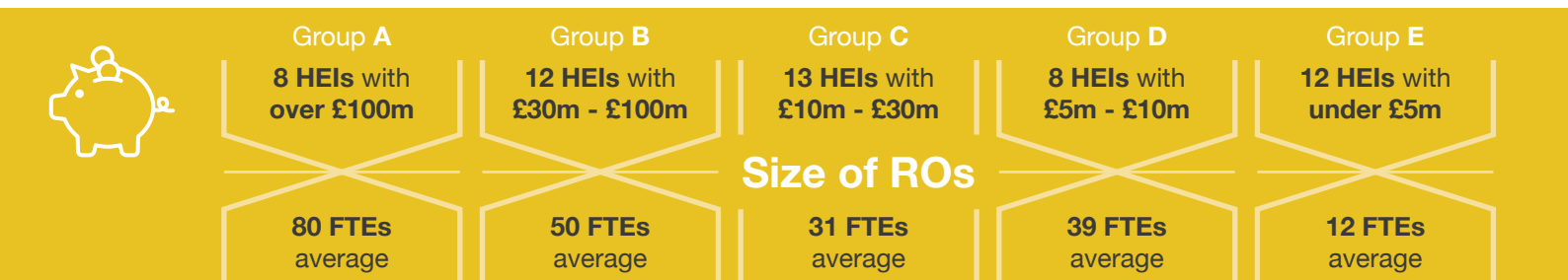
Extrapolated to all UK Higher Education Institutions (HEIs), the survey suggests research offices account for 4,700 FTEs.

Research Office structures



Directors of Research & Innovation/Enterprise are now the most common senior professional responsible for research.

Participants by size of research income & FTE levels



The survey participants represent the range of university research incomes and staffing levels. (Research income is based on the HESA Research Grants and Contracts figure for 2017-18)

The top five functional areas by FTE numbers



For business development and research contracts the majority of FTEs are located in the largest universities (>£30m+). But for REF support, pre-award and post-award, the FTEs are distributed more evenly.