

CIRA

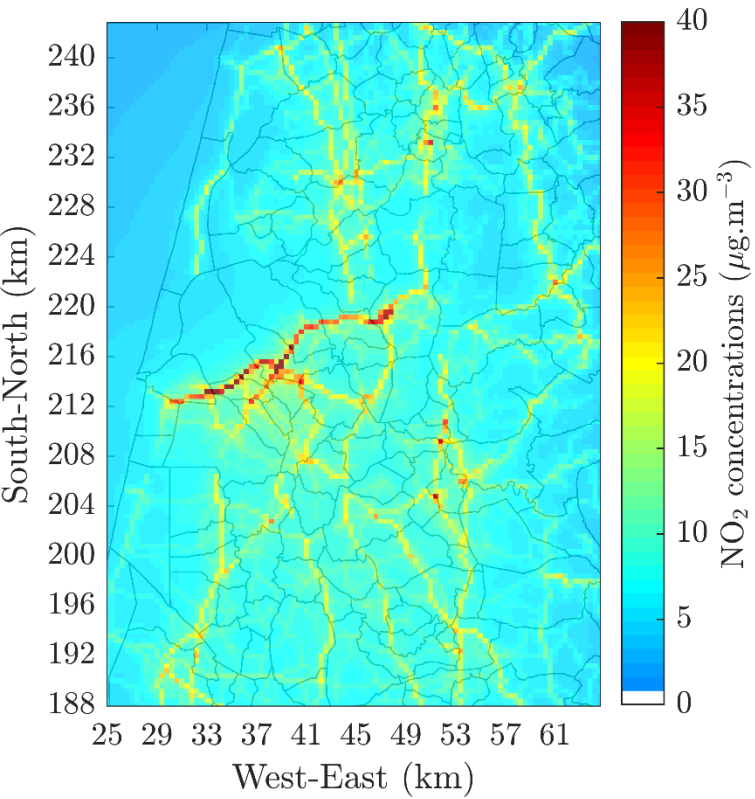
Summary AQ results

Approach

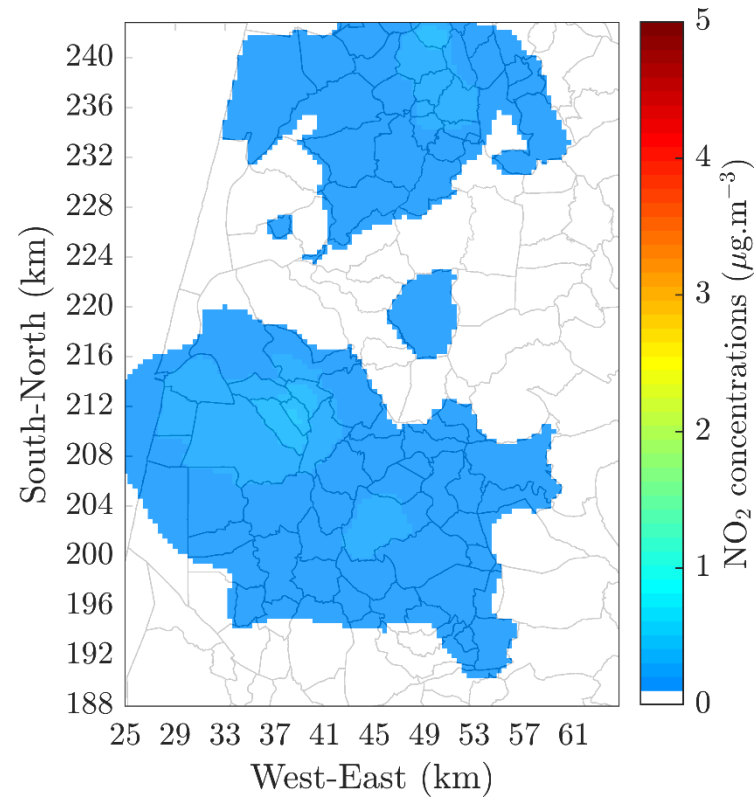
The background value was obtained from PSAT and was applied over the whole domain; For the sector contribution we didn't account the background

NO₂

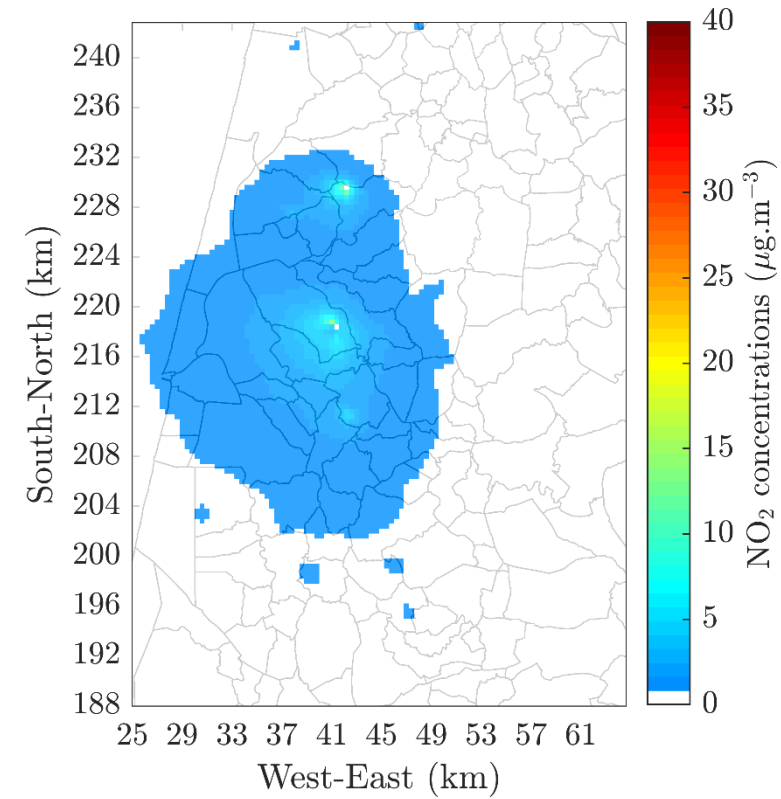
Concentration by sector



Transport

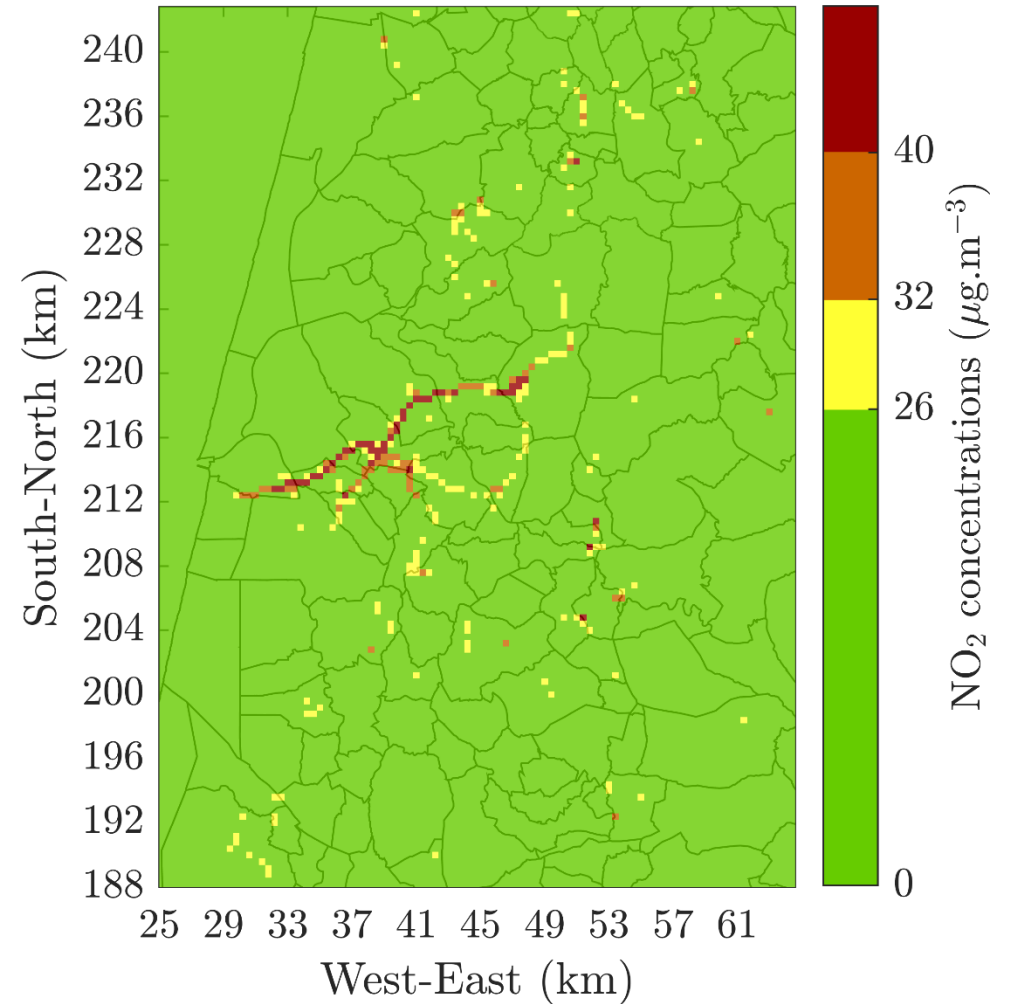
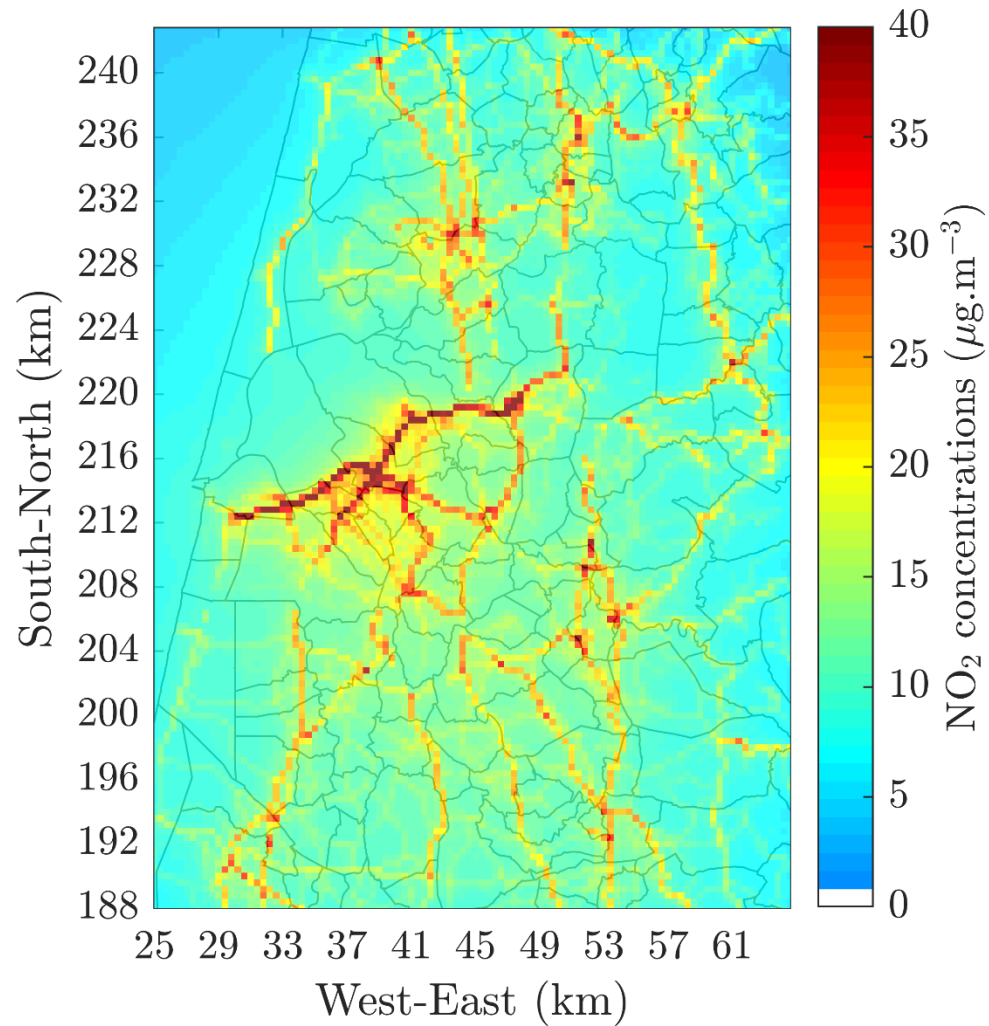


IRCI

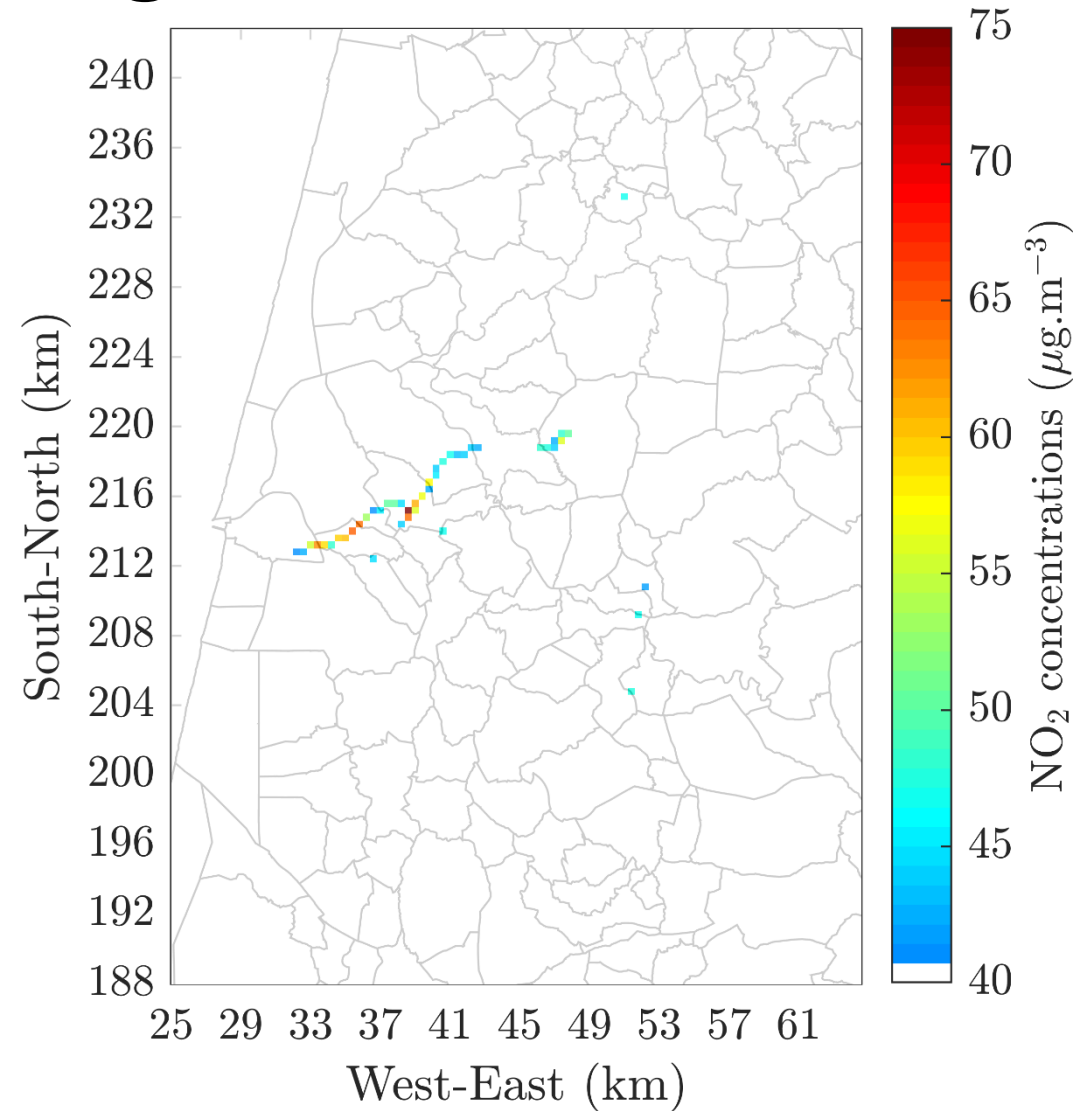


Industrial

Total Concentrations



Cells exceeding EU limit



Contribution by sector

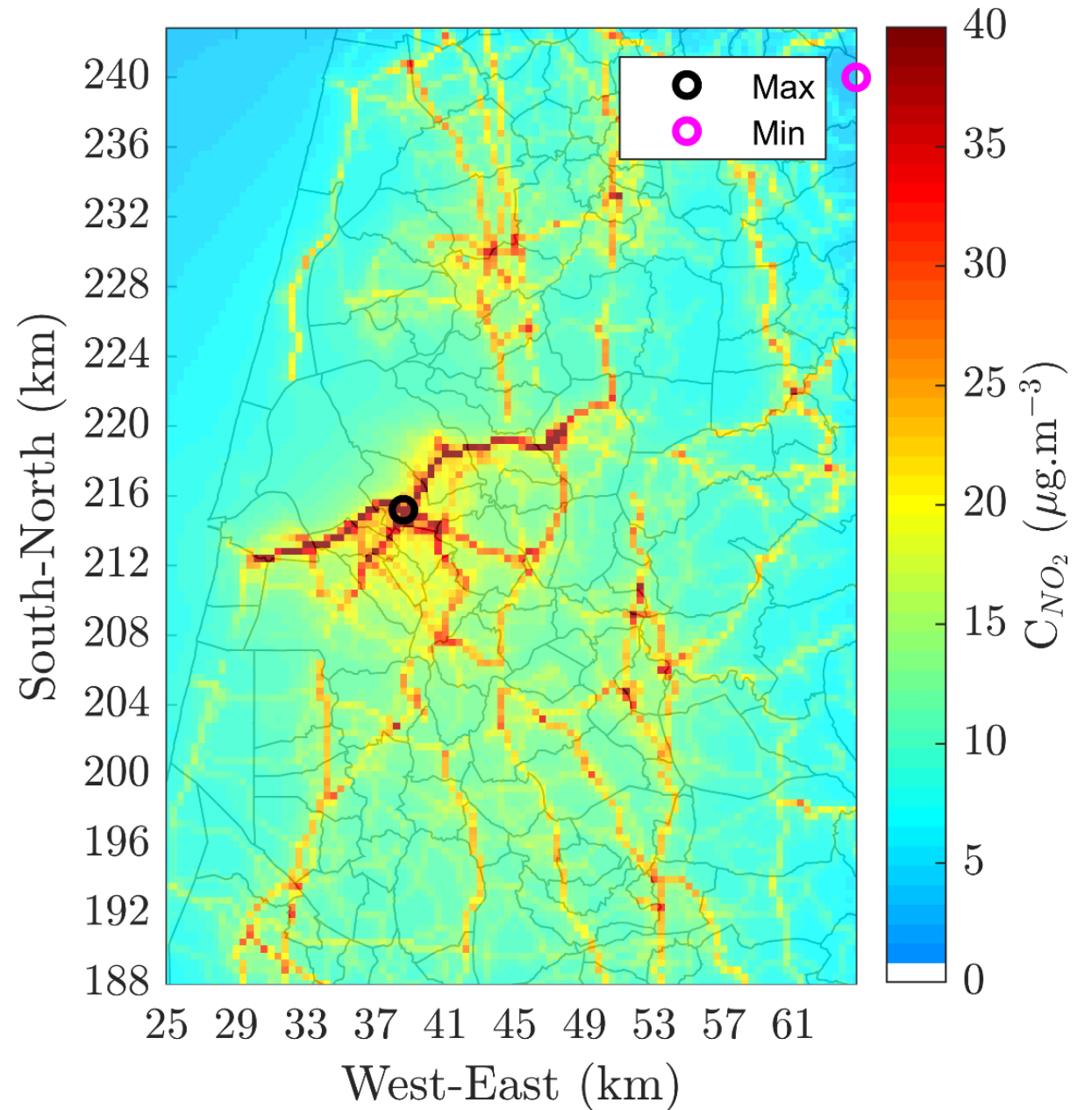
Sector	With Adjustment (%)
Transport	91.0
Industrial	7.8
Residential and commercial	1.2
Total	100

Maximum, minimum and mean with adjustment

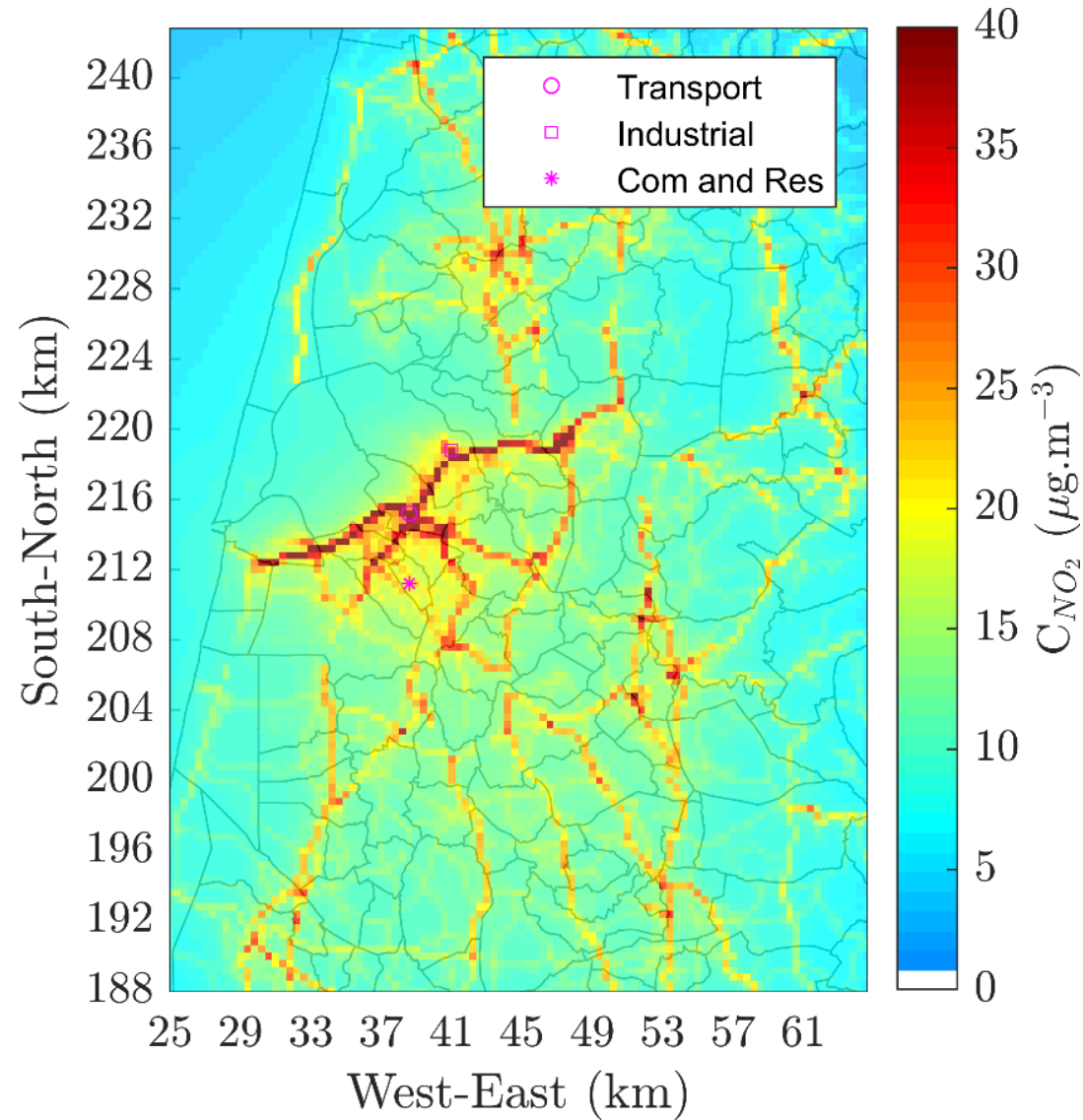
	Total Concentrations
MAX	57.7
MIN	2.6
MEAN	9.1

Contribution by sector for the cell with the maximum value

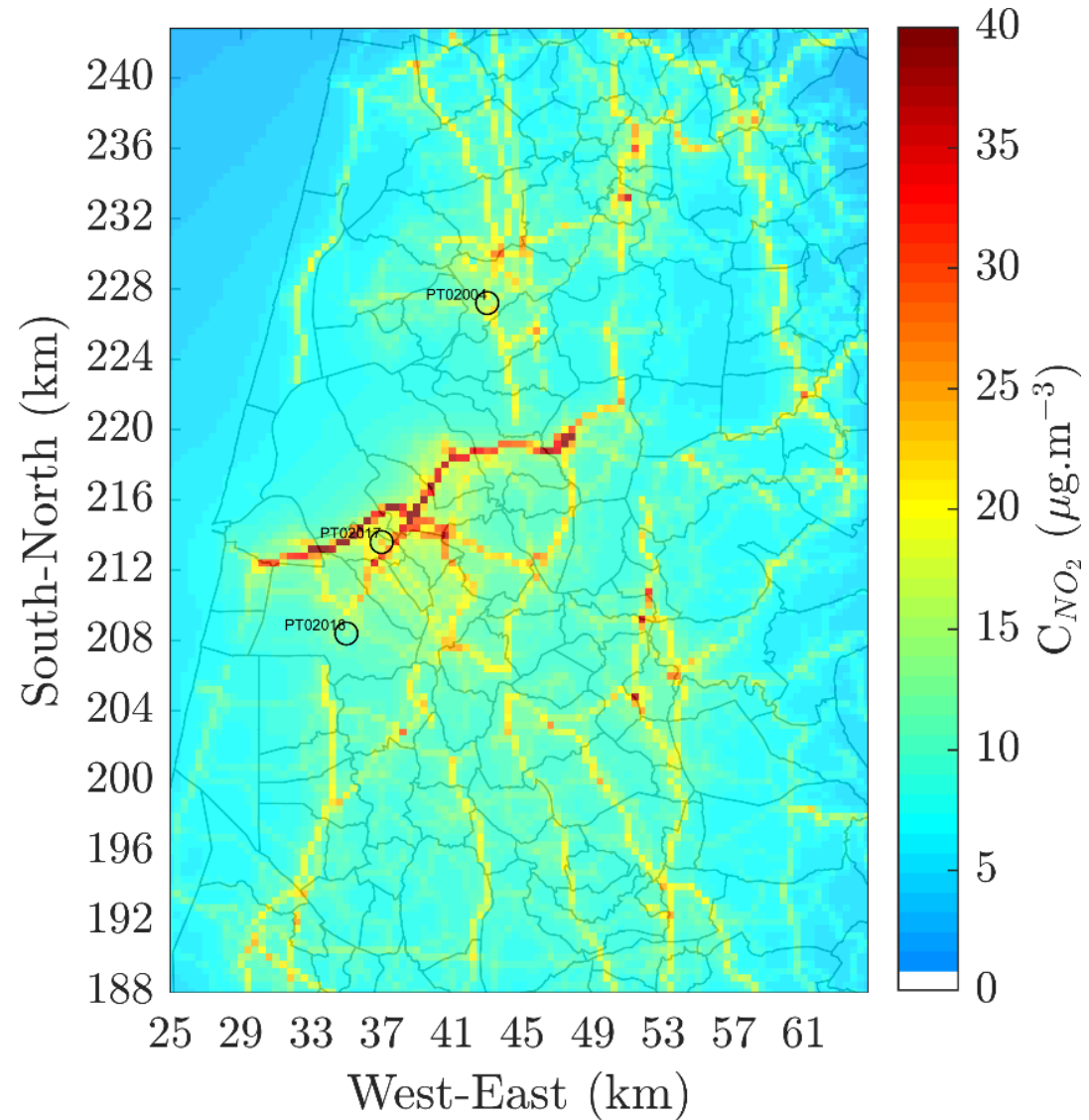
Sector	Contribution by sector for the cell with max value (%)
	Max
Transport	95.1
Industrial	4.5
Commercial and residential	0.4



Location of the maximum value by sector



AQS locations

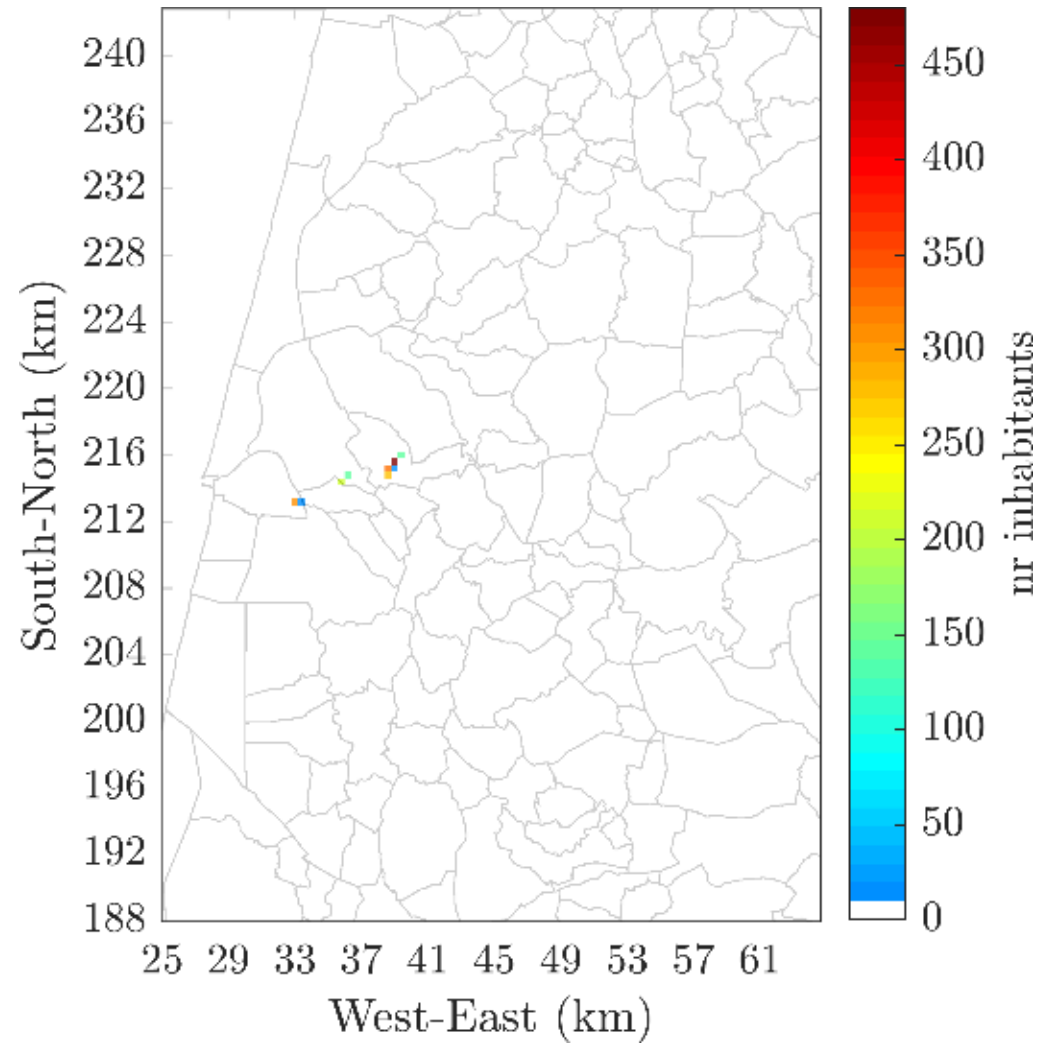


Simulated without adjustment AQS values comparison

Station		AQS Values	Simulated Values		Contribution by sector for the corresponding cell (%)		
Station	Station_type	Measured value	Without Adjustment	With Adjustment	Transport sector	Industrial sector	Com. and Res. Sector
PT02004	Suburban Background	13.521	8.964	20.12	90.2	9.1	0.7
PT02017	Urban traffic	23.136	7.310	16.65	87.4	11.0	1.6
PT02018	Suburban Background	13.517	4.534	10.24	87.4	10.1	2.5

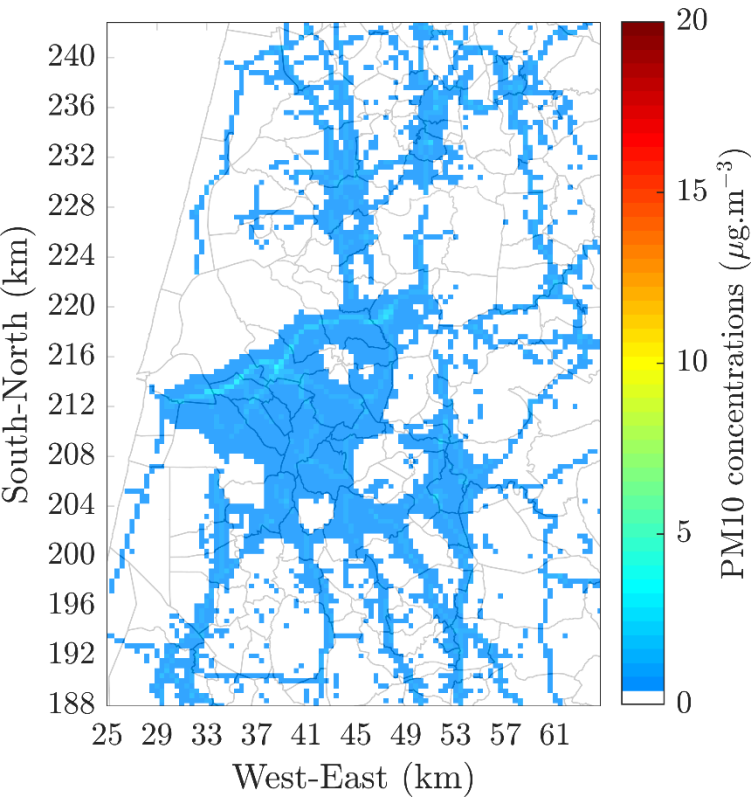
Adjustment factor: 2.2

Population exposed to values above EU limits and WHO guidelines

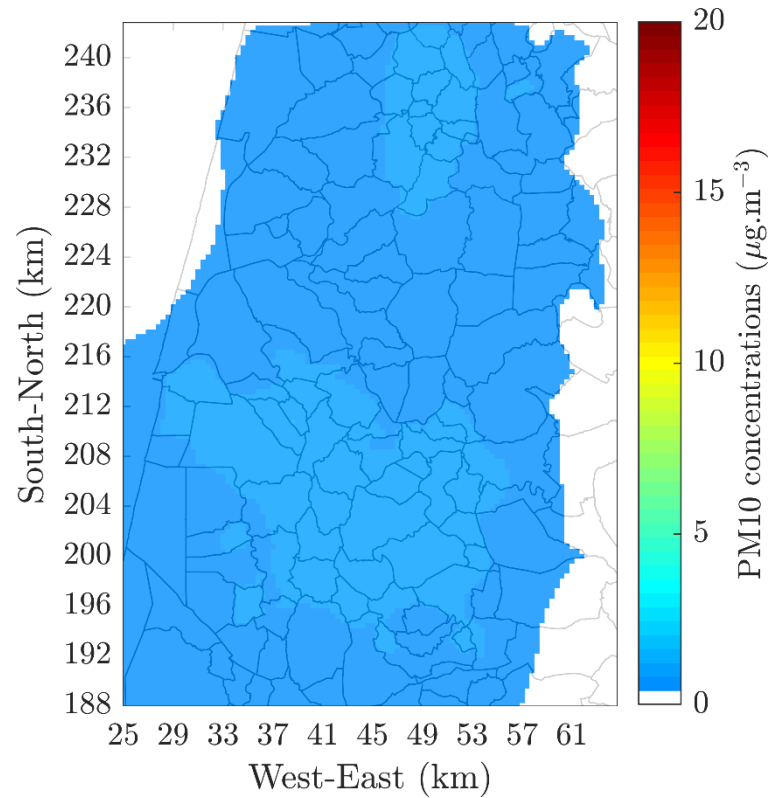


PM10

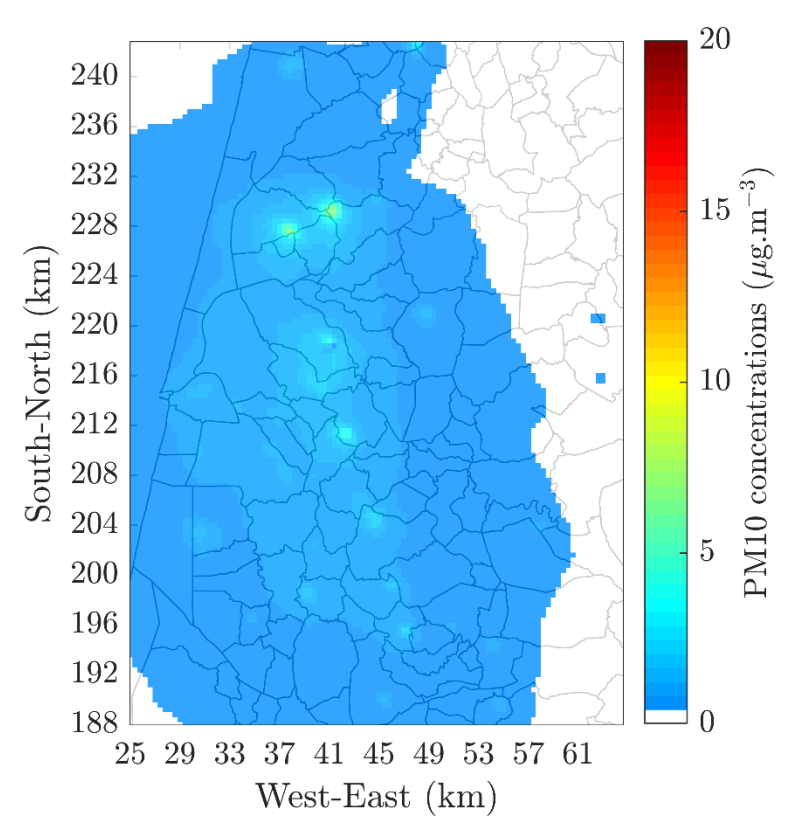
Concentration by sector



Transport

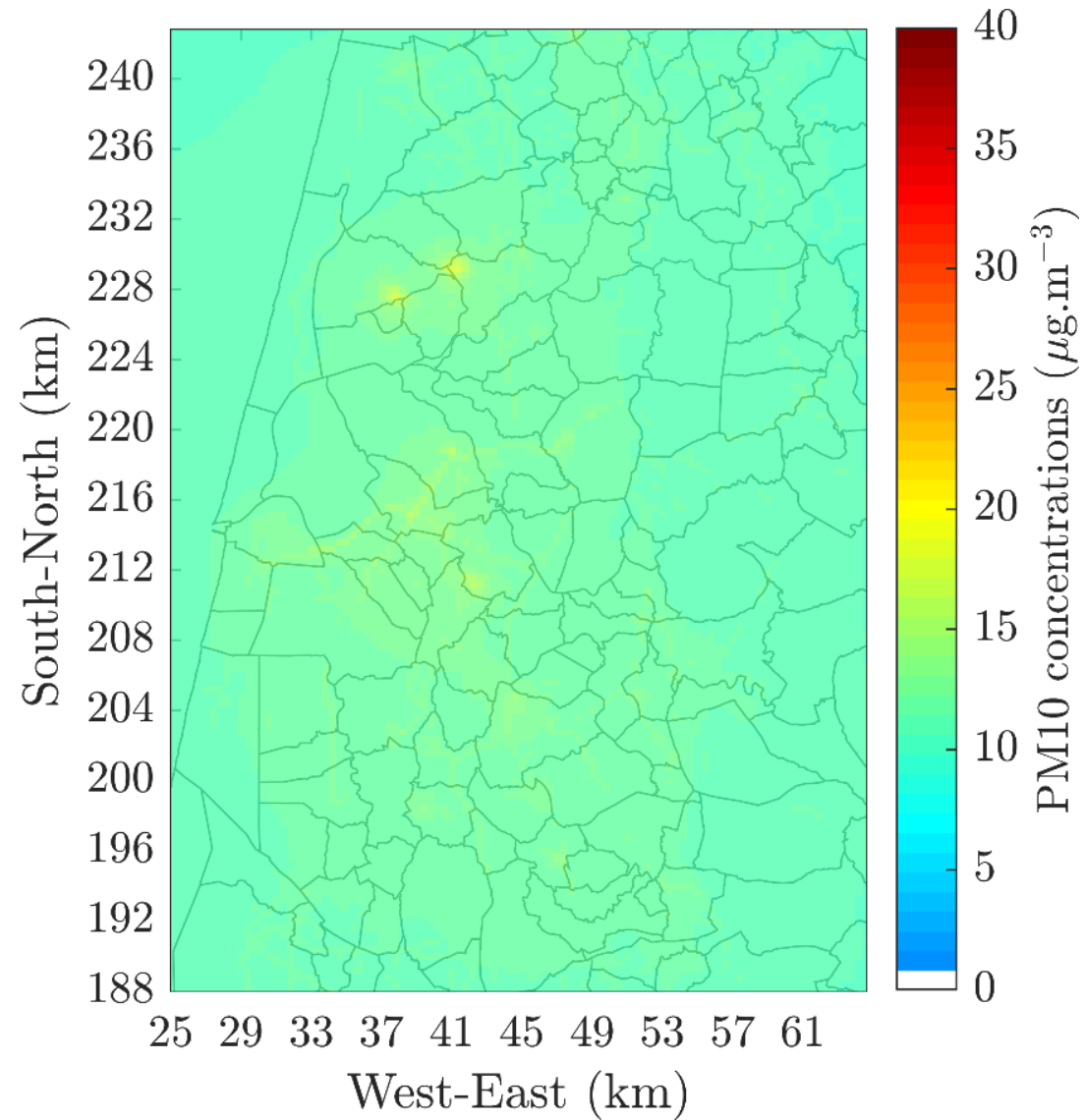


IRCI



Industrial

Total Concentrations



Contribution by sector

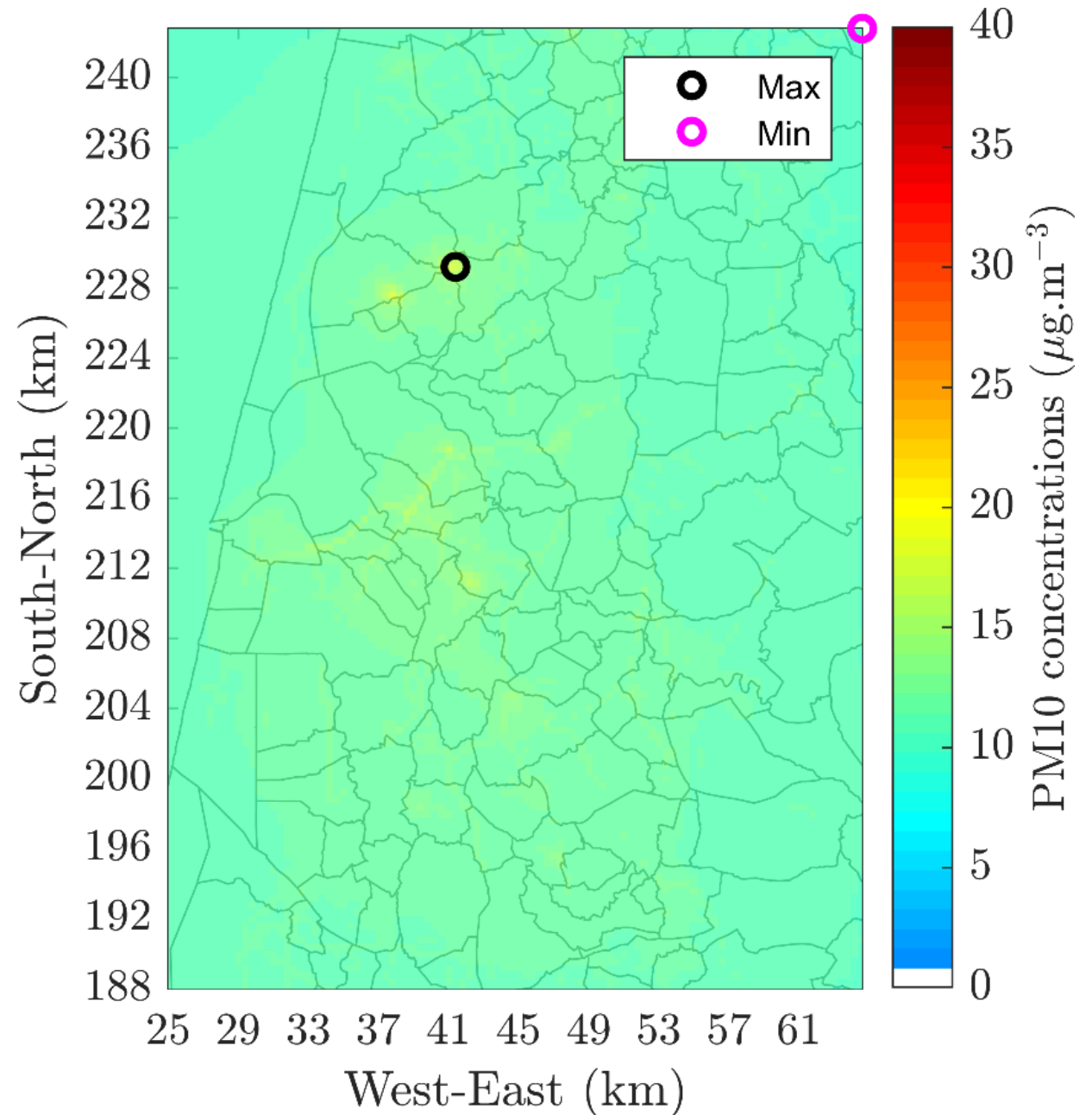
Sector	With Adjustment (%)
Transport	23.3
Industrial	39.0
Residential and commercial	37.7
Total	100

Maximum, minimum and mean with adjustment

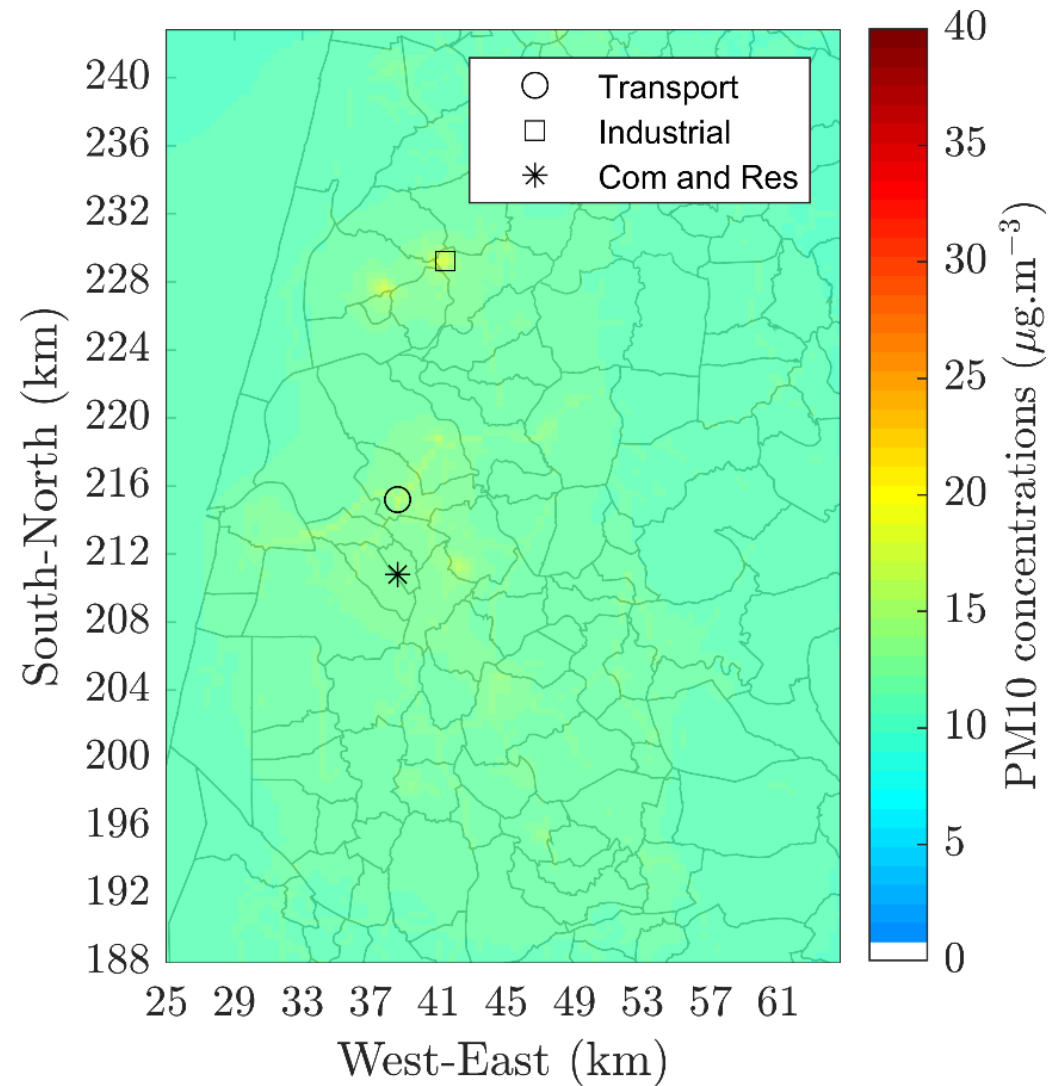
	Total Concentrations
MAX	17.6
MIN	10.2
MEAN	11.5

Contribution by sector for the cell with the maximum value

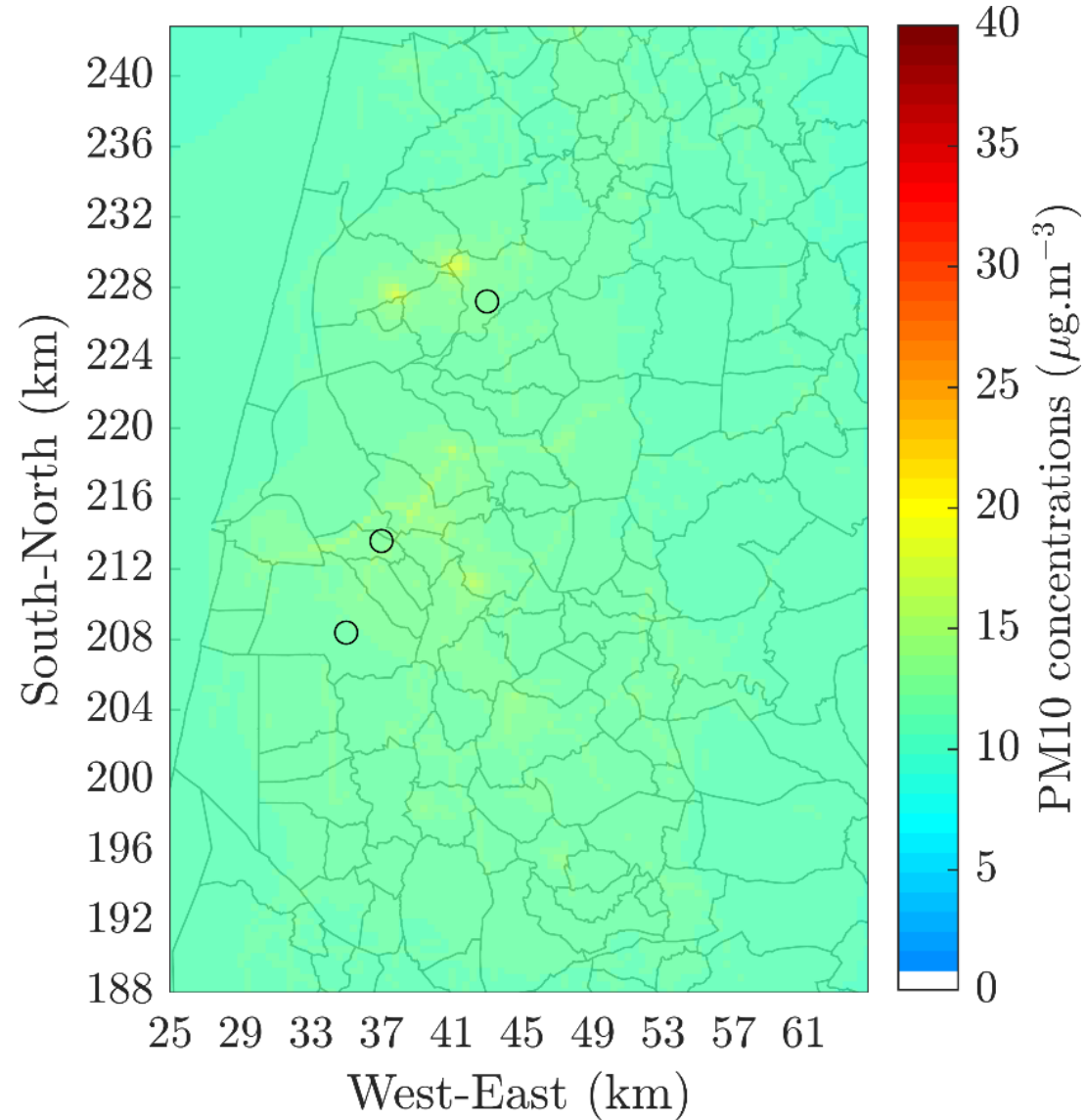
Sector	Contribution by sector for the cell with max value (%)
	Max
Transport	4.5
Industrial	85.9
Commercial and residential	9.6



Location of the maximum value by sector



AQS locations



Simulated without adjustment AQS values comparison

Station		AQS Values	Simulated Values	Contribution by sector for the corresponding cell (%)		
Station	Station_type	Measured value	With Adjustment	Transport sector	Industrial sector	Com. and Res. Sector
PT02004	Suburban Background	25.5	12.8	32.9	42.0	25.1
PT02017	Urban traffic	23.6	12.6	26.6	44.1	29.2
PT02018	Suburban Background	26.7	12.1	18.4	42.9	38.7

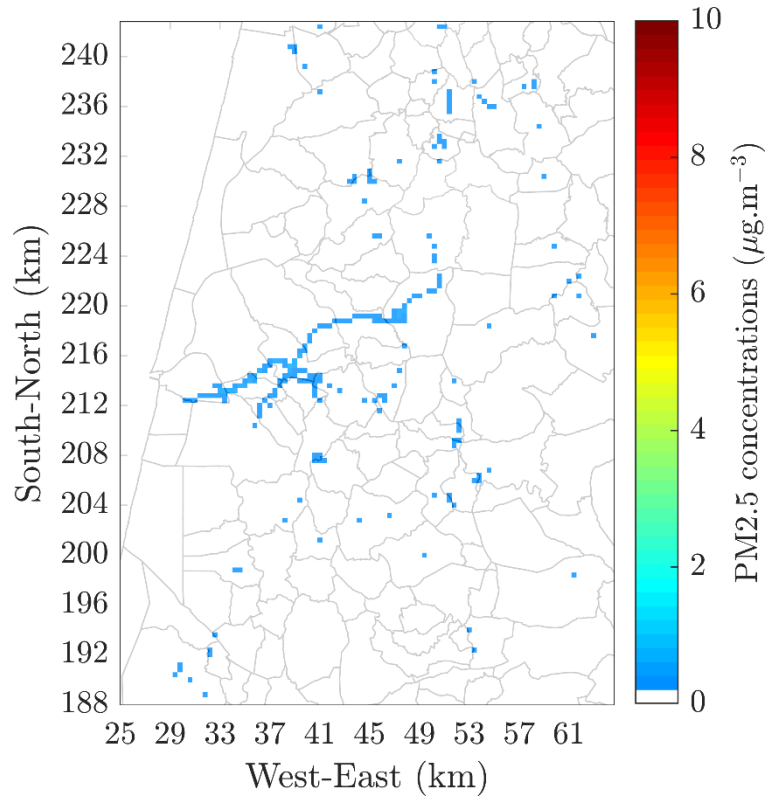
Adjustment factor: 1.4

Population exposed to values above EU limits and WHO guidelines

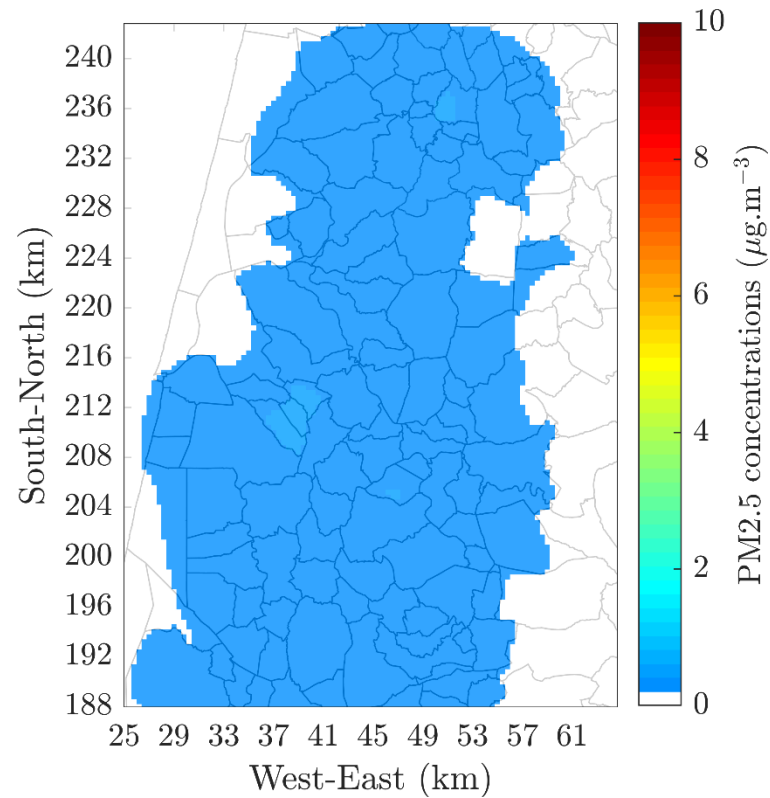
There are no exceedances to the EU limits and to the WHO Guidelines

PM2.5

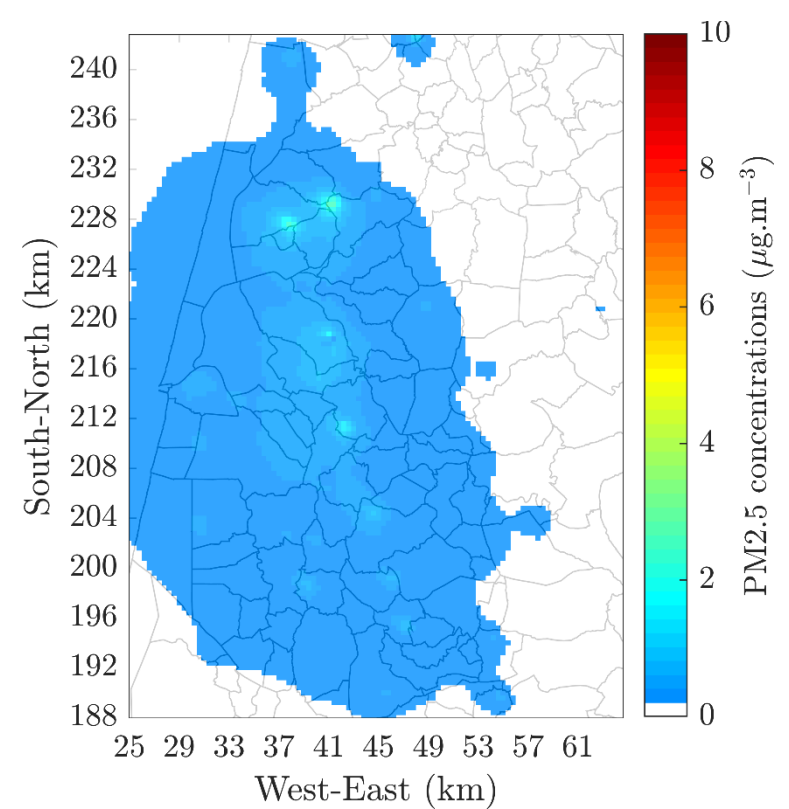
Concentration by sector



Transport

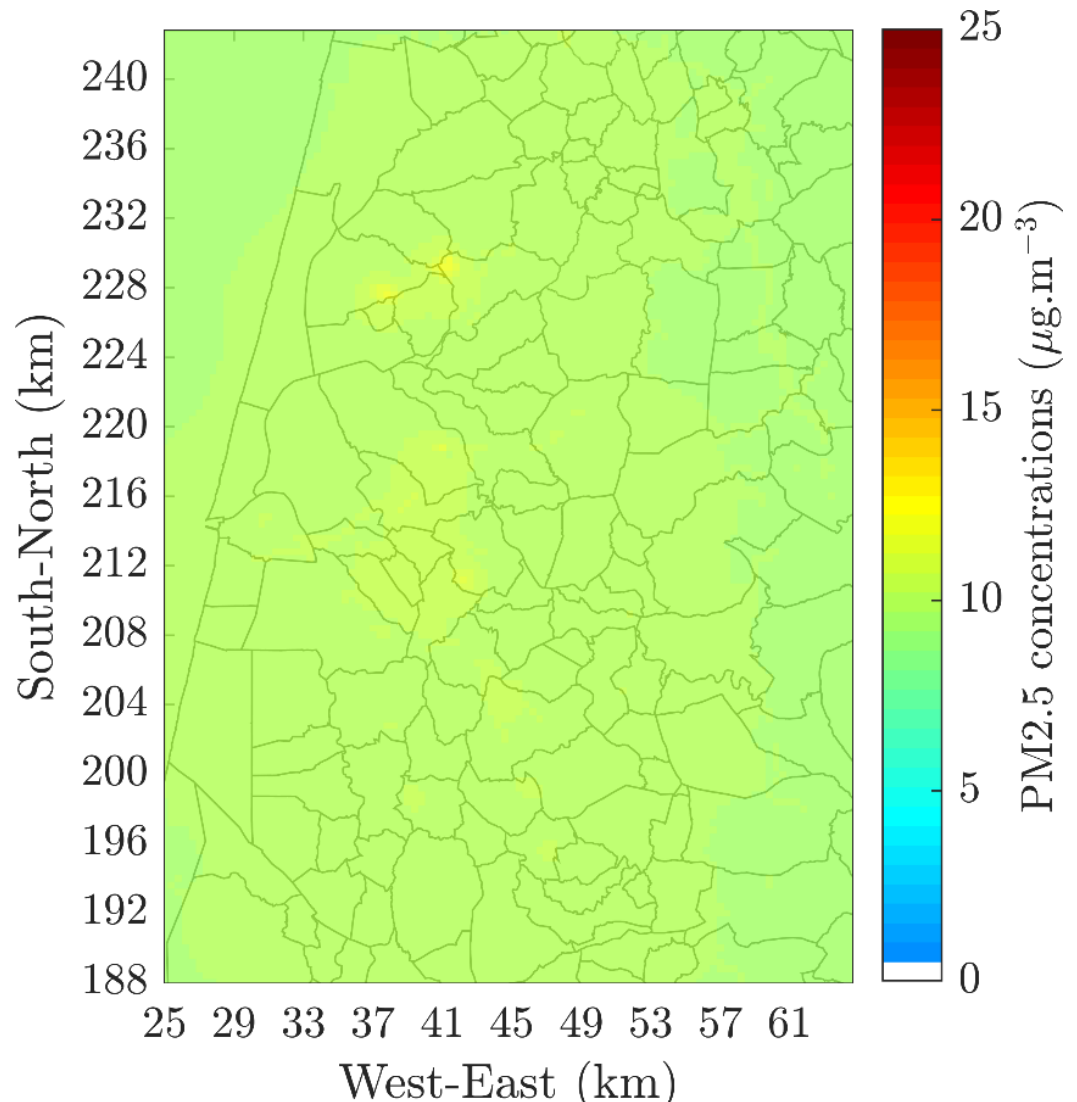


IRCI



Industrial

Total Concentrations



Contribution by sector

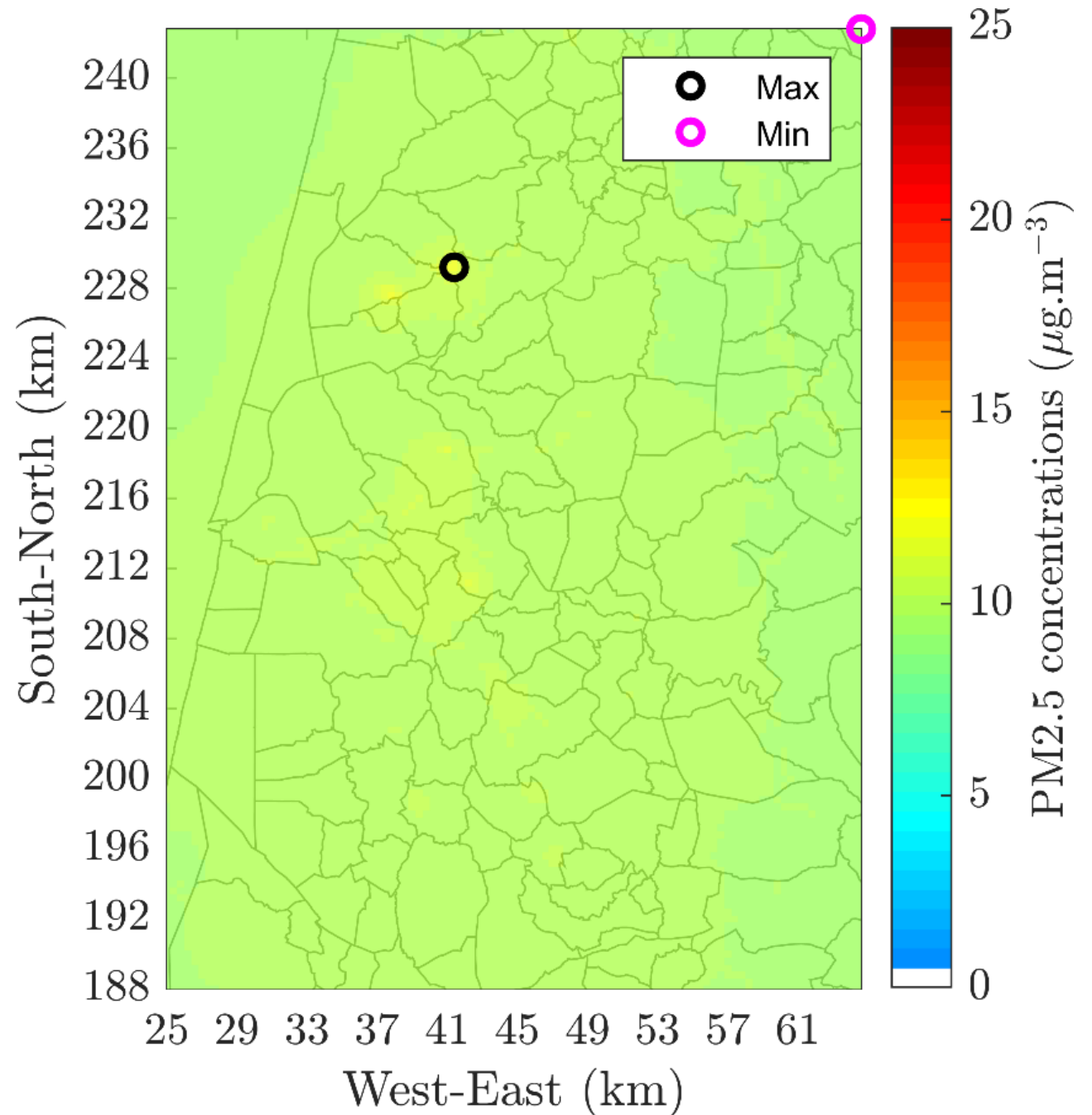
Sector	With Adjustment (%)
Transport	13.3
Industrial	44.1
Residential and commercial	42.6
Total	100

Maximum, minimum and mean with adjustment

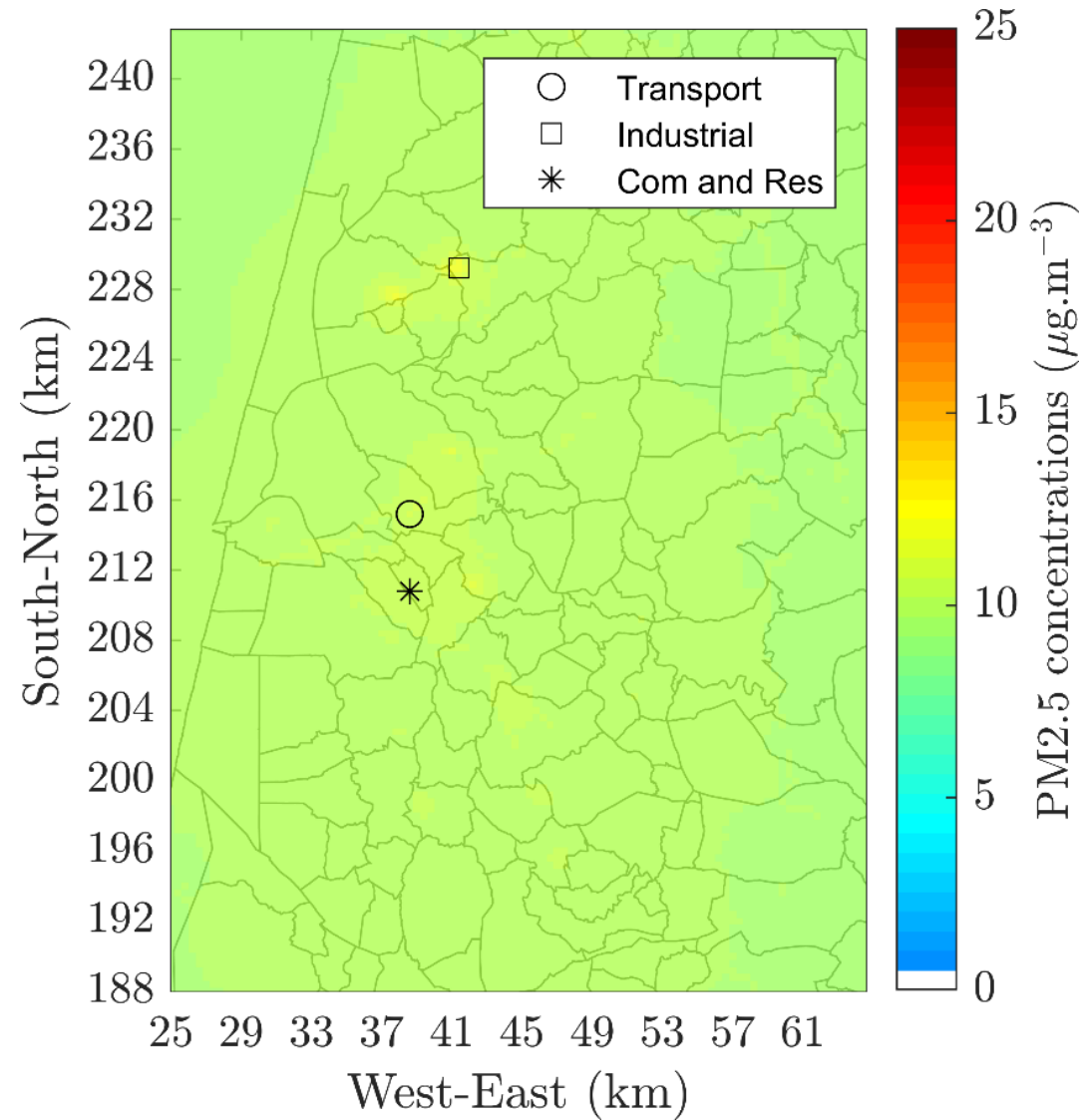
	Total Concentrations
MAX	12.1
MIN	9.4
MEAN	9.8

Contribution by sector for the cell with the maximum value

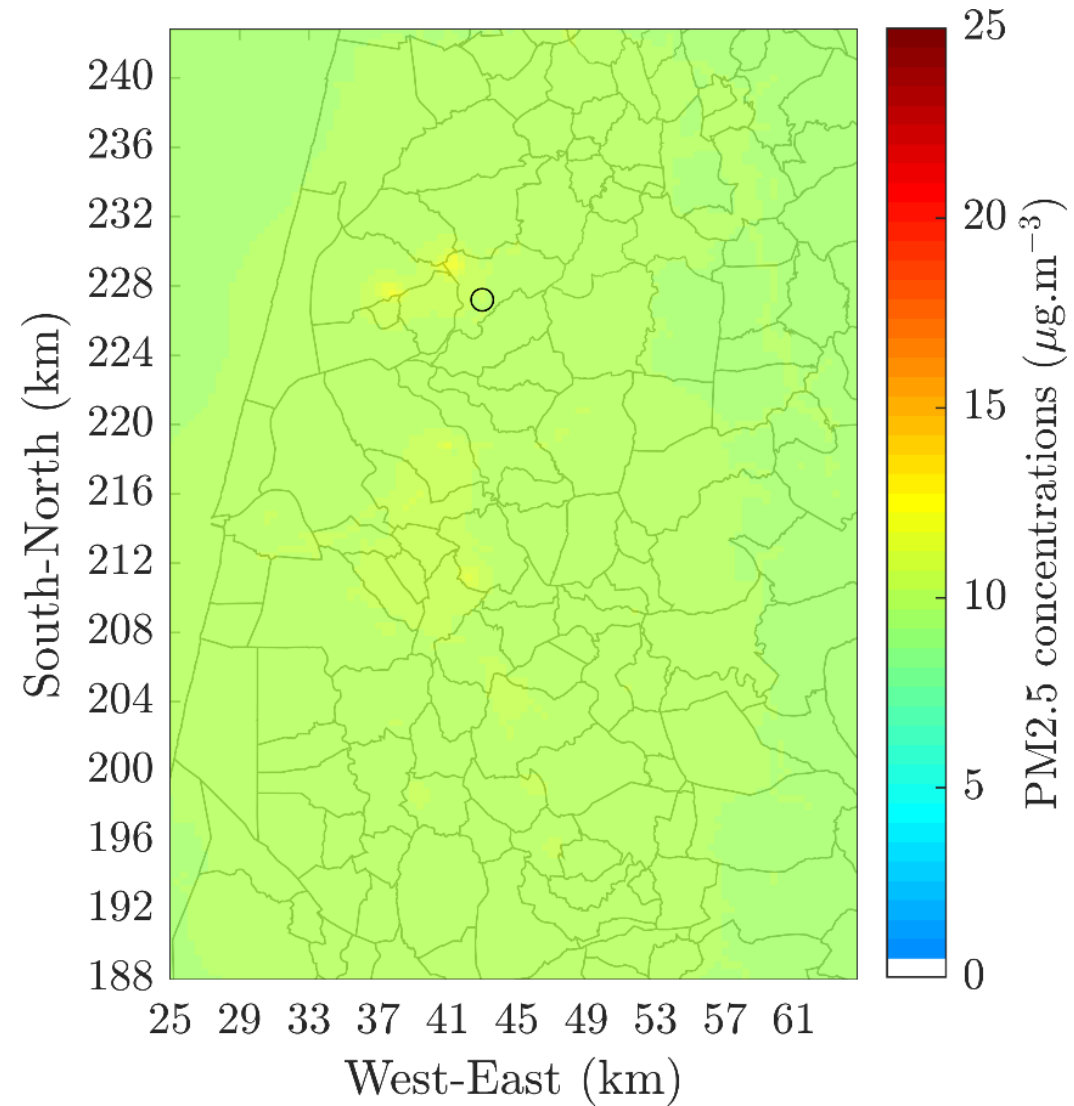
Sector	Contribution by sector for the cell with max value (%)
	Max
Transport	2.3
Industrial	87.9
Commercial and residential	9.9



Location of the maximum value by sector



AQS locations



Simulated without adjustment AQS values comparison

Station		AQS Values	Simulated Values	Contribution by sector for the corresponding cell (%)		
Station	Station_type	Measured value	With Adjustment	Transport sector	Industrial sector	Com. and Res. Sector
PT02004	Suburban Background	14.7	10.2	19.9	50.2	29.9

Adjustment factor:0.5

Population exposed to values above EU limits and WHO guidelines

There are no exceedances to the EU limits

