

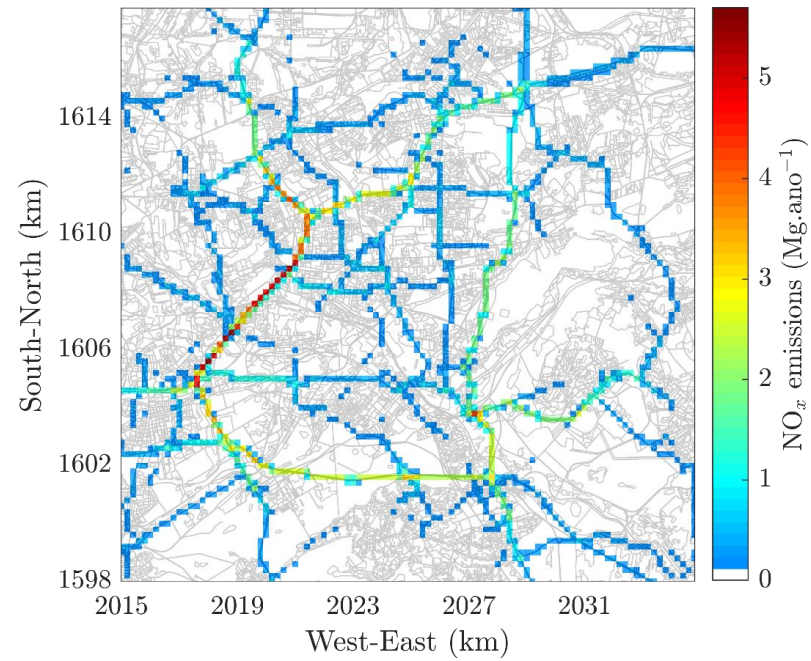
Sosnowiec

Summary AQ results

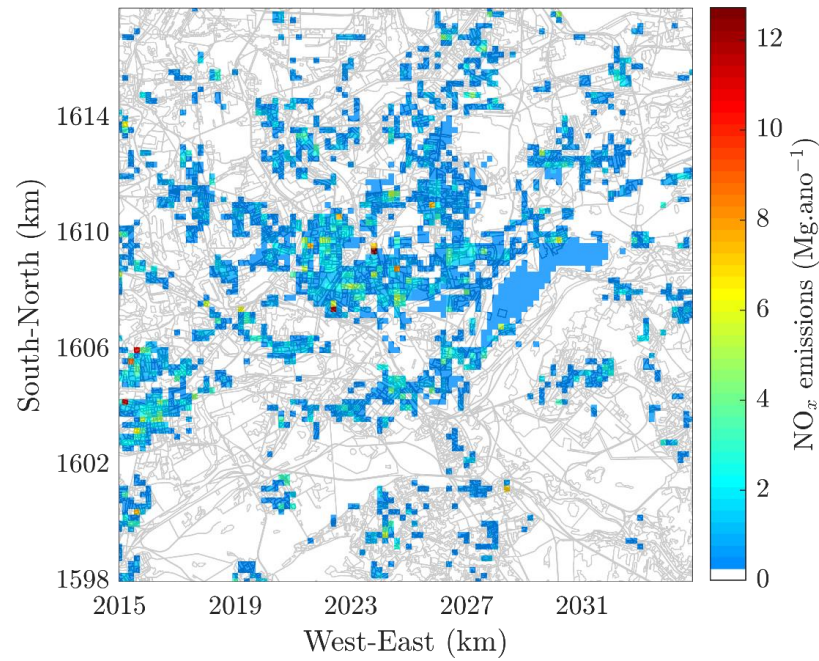
Approach

The background value was obtained from PSAT and was applied over the whole domain; For the sector contribution we didn't account the background

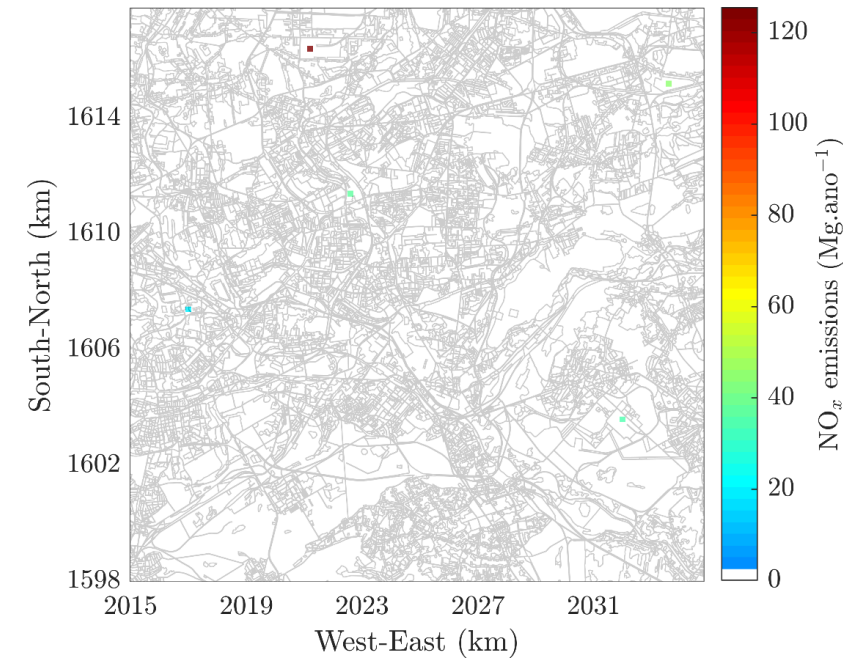
Emissions- NOx



Transport



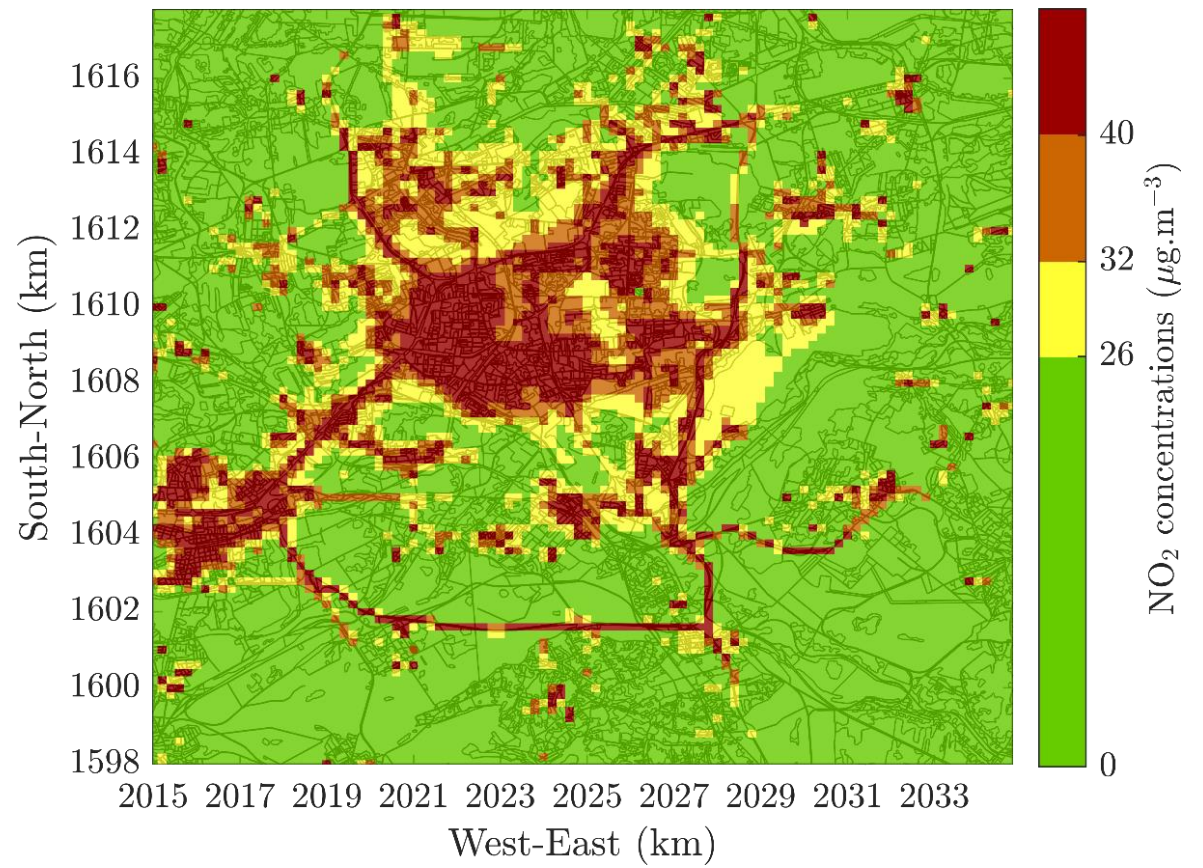
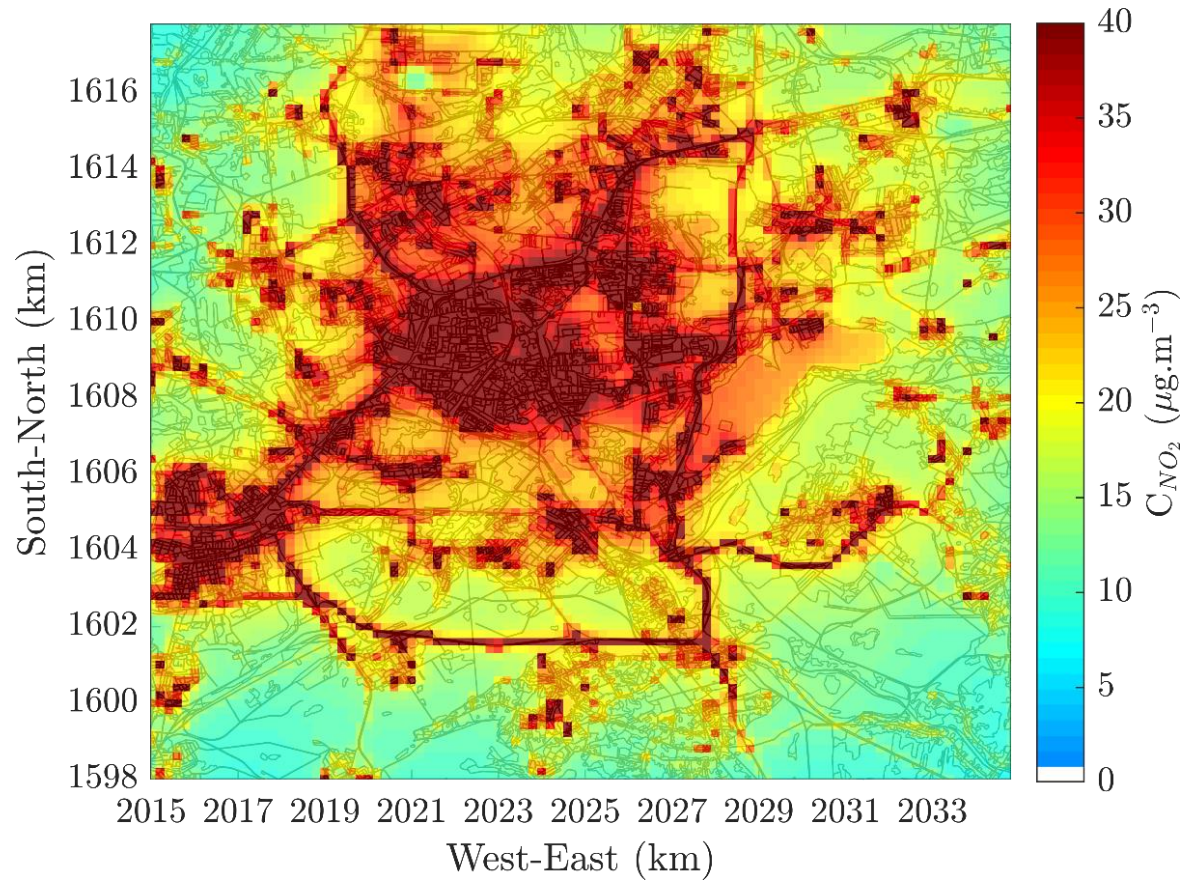
Residential and
commercial



Industrial

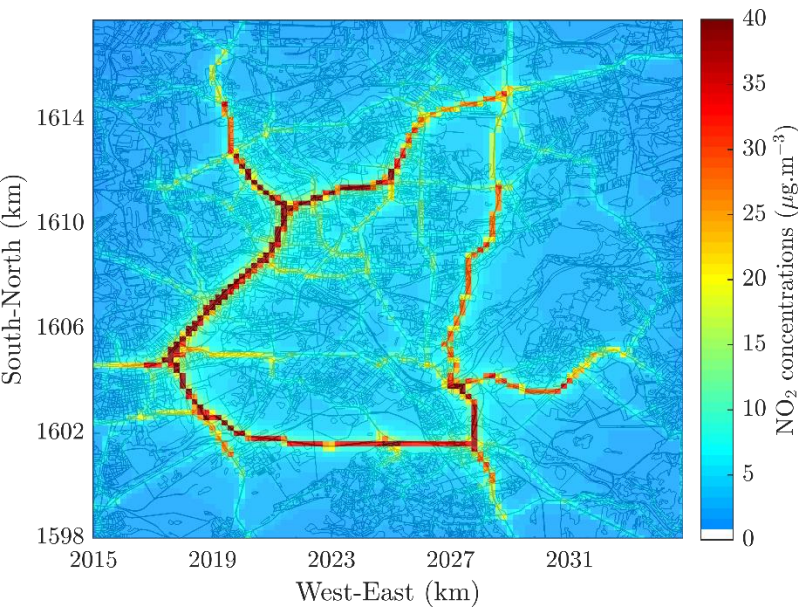
NO₂

Total concentrations

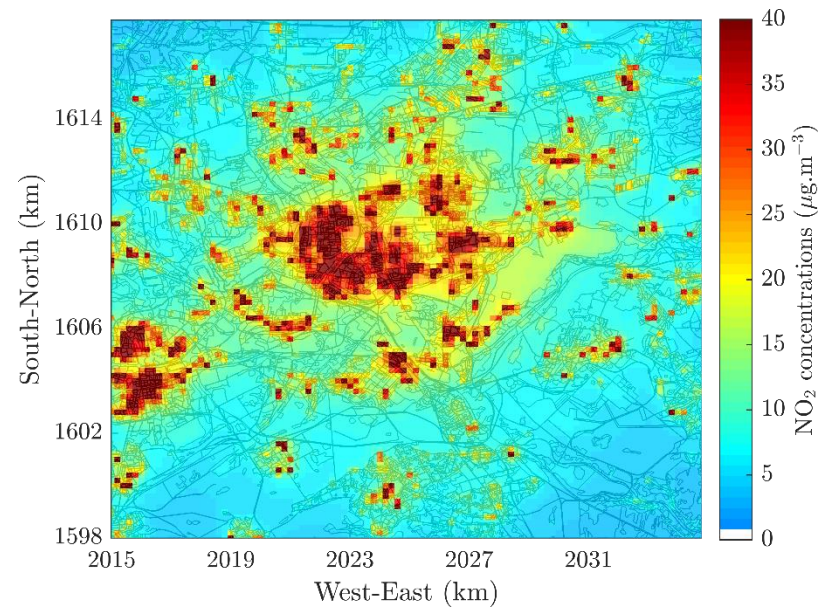


Concentrations by sector

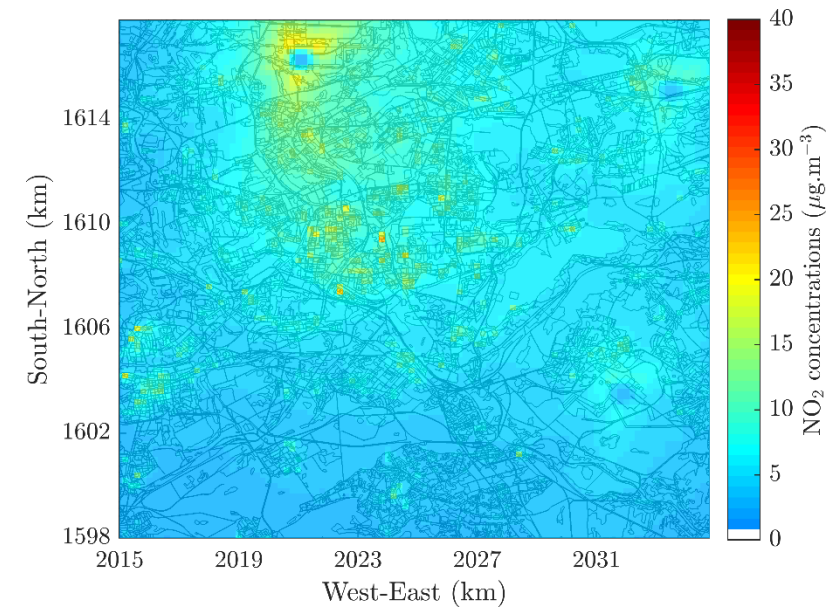
Transport



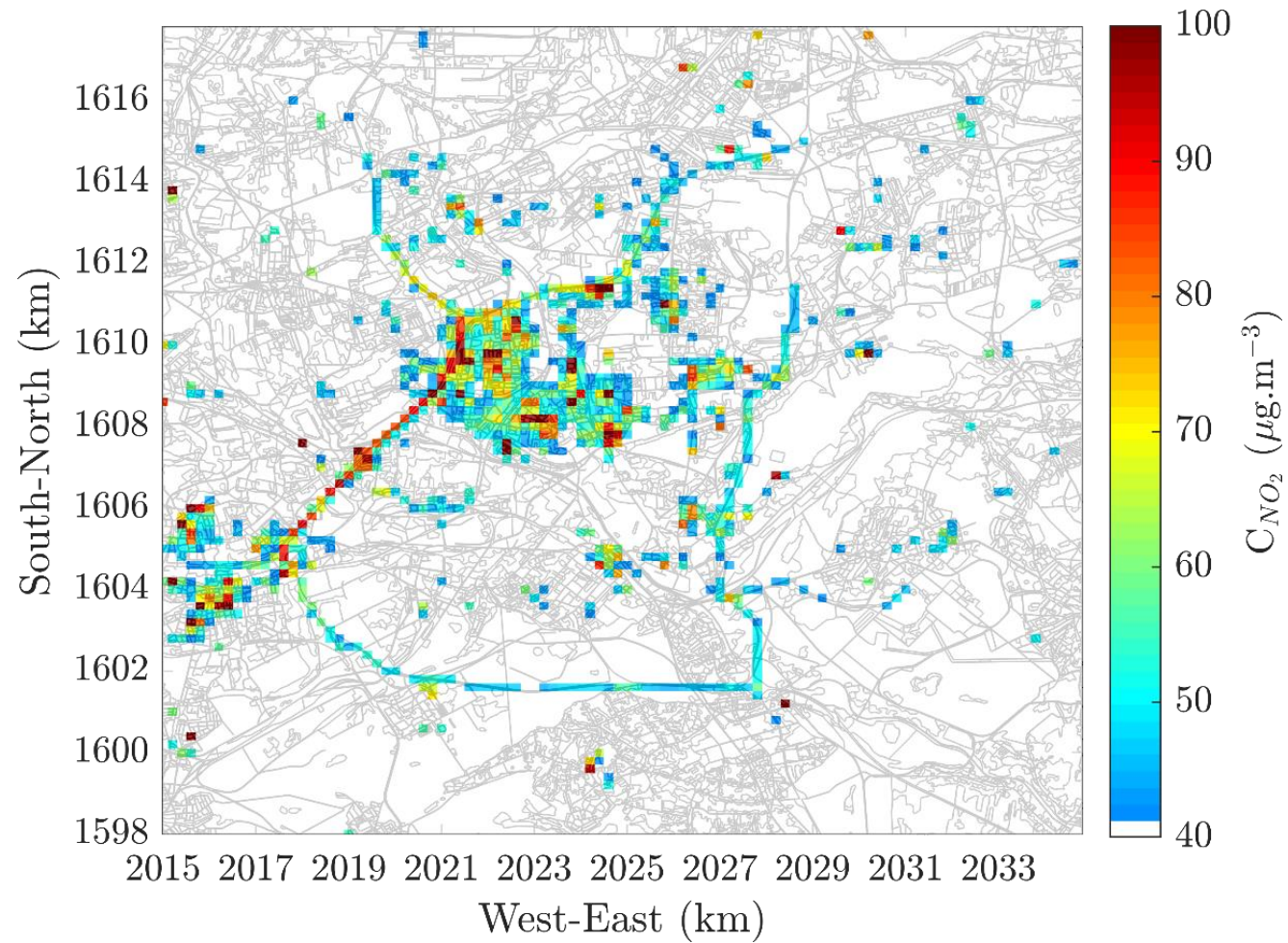
IRCI



Industrial



Cells exceeding the EU limit



Contribution by sector for the whole domain

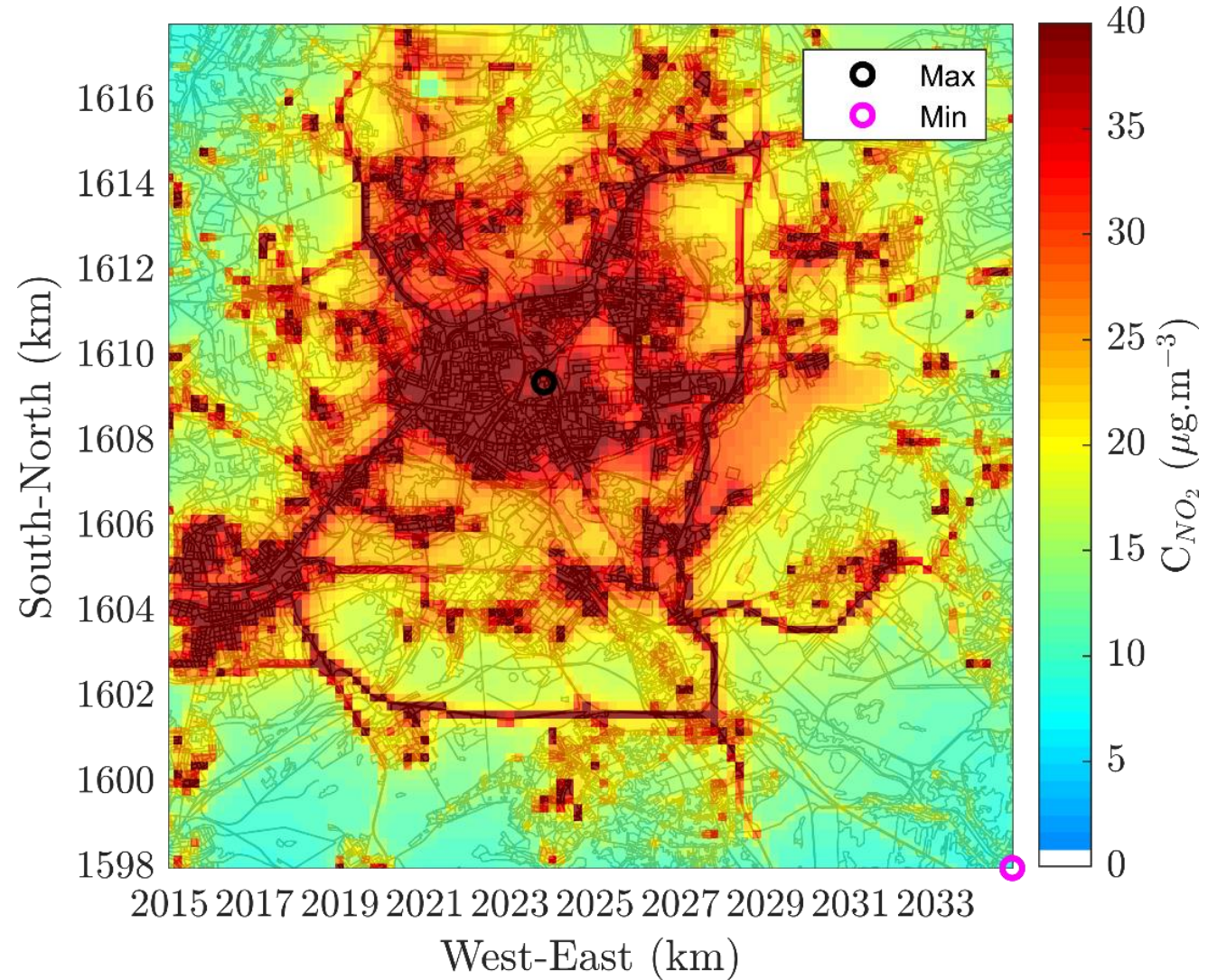
Sector	Original Approach (%)
Transport	22.5
Industrial	24.8
Residential and commercial	52.7
Total	100

Maximum, minimum and mean with adjustment

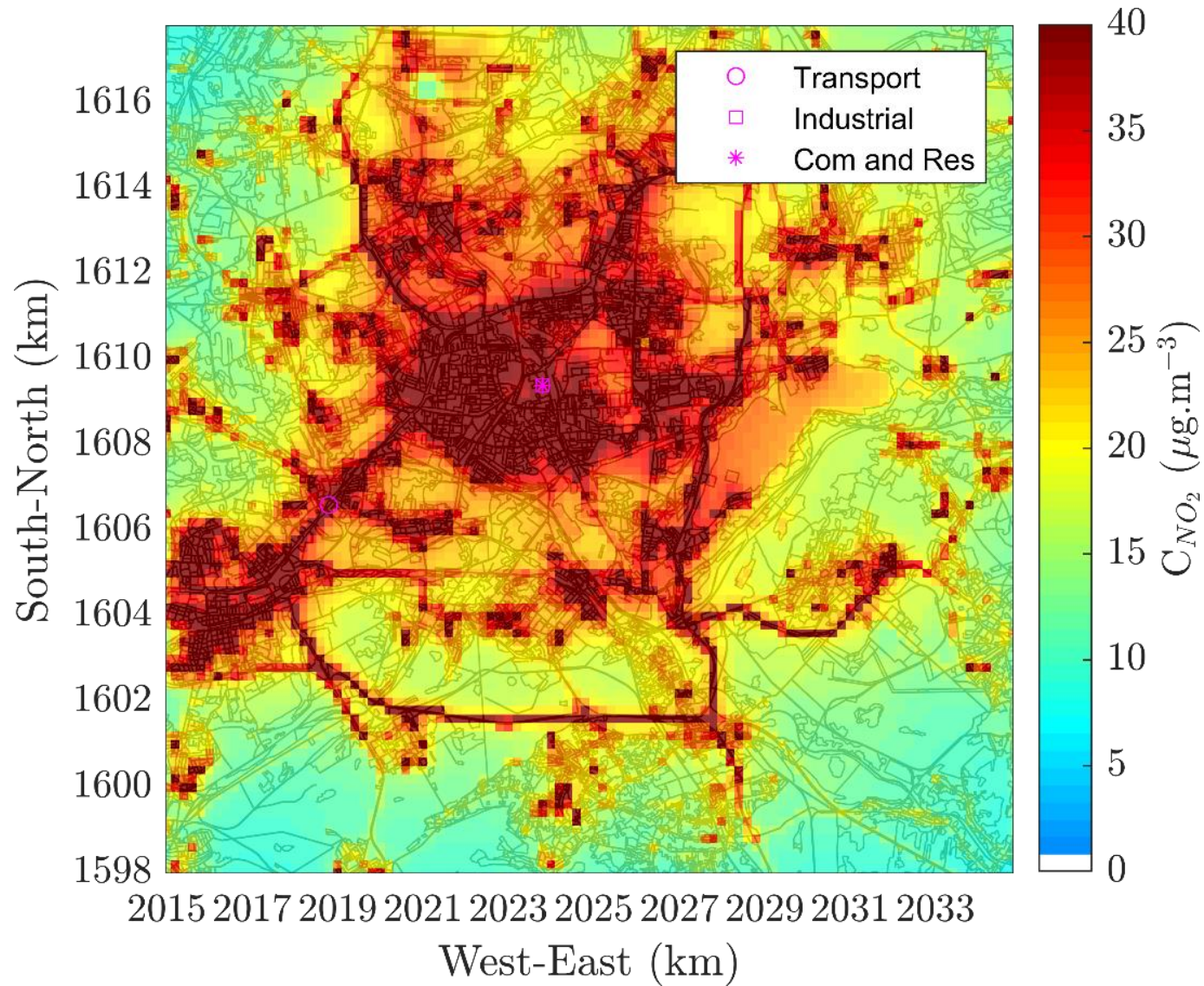
	With adjustment
MAX	207.7
MIN	7.7
MEAN	24.3

Contribution by sector for the cell with the maximum and minimum value

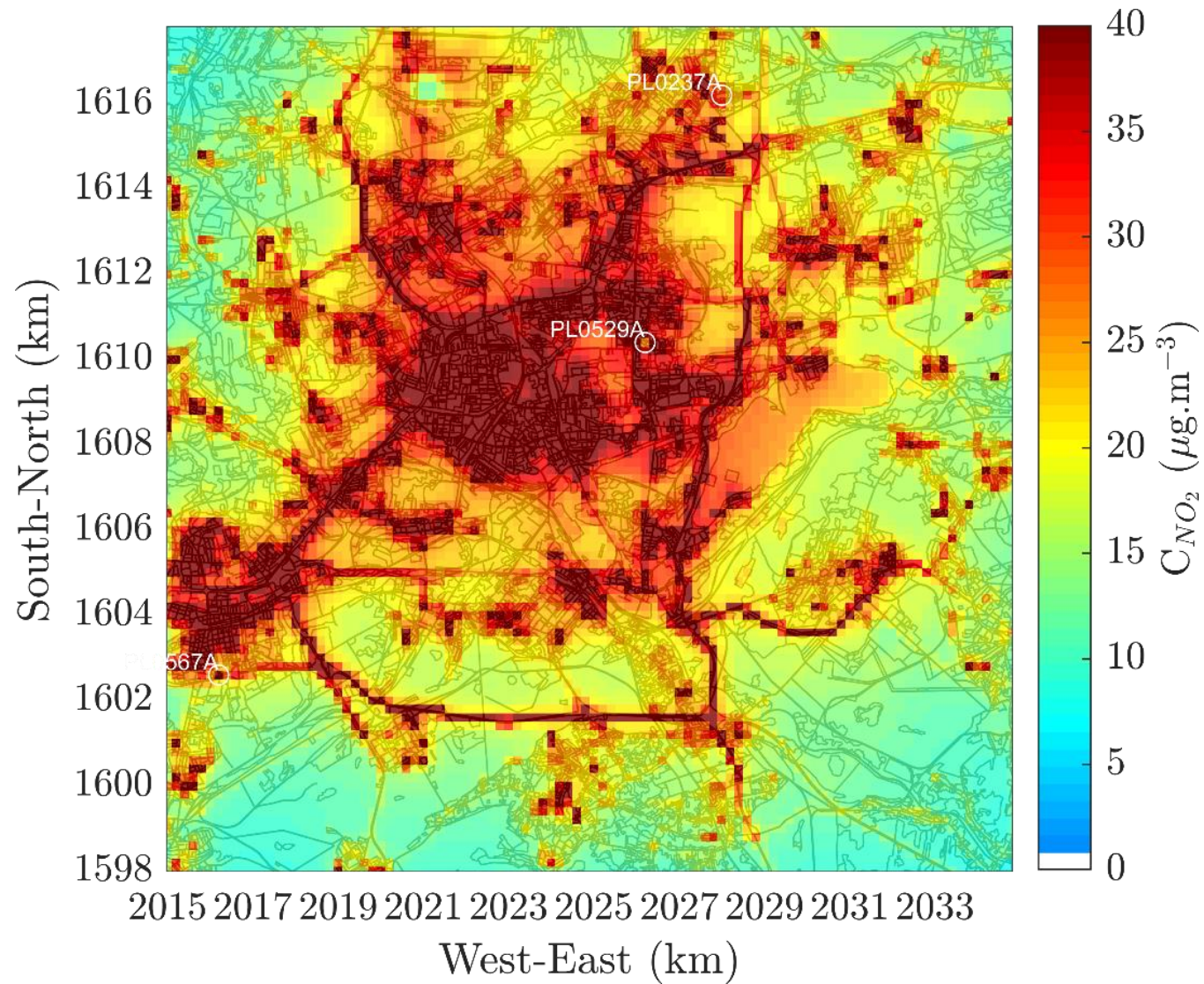
Sector	Contribution by sector for the cell with max value (%)
	Max
Transport	2.8
Industrial	11.4
Commercial and residential	85.8



Location of the maximum value by sector



AQS locations

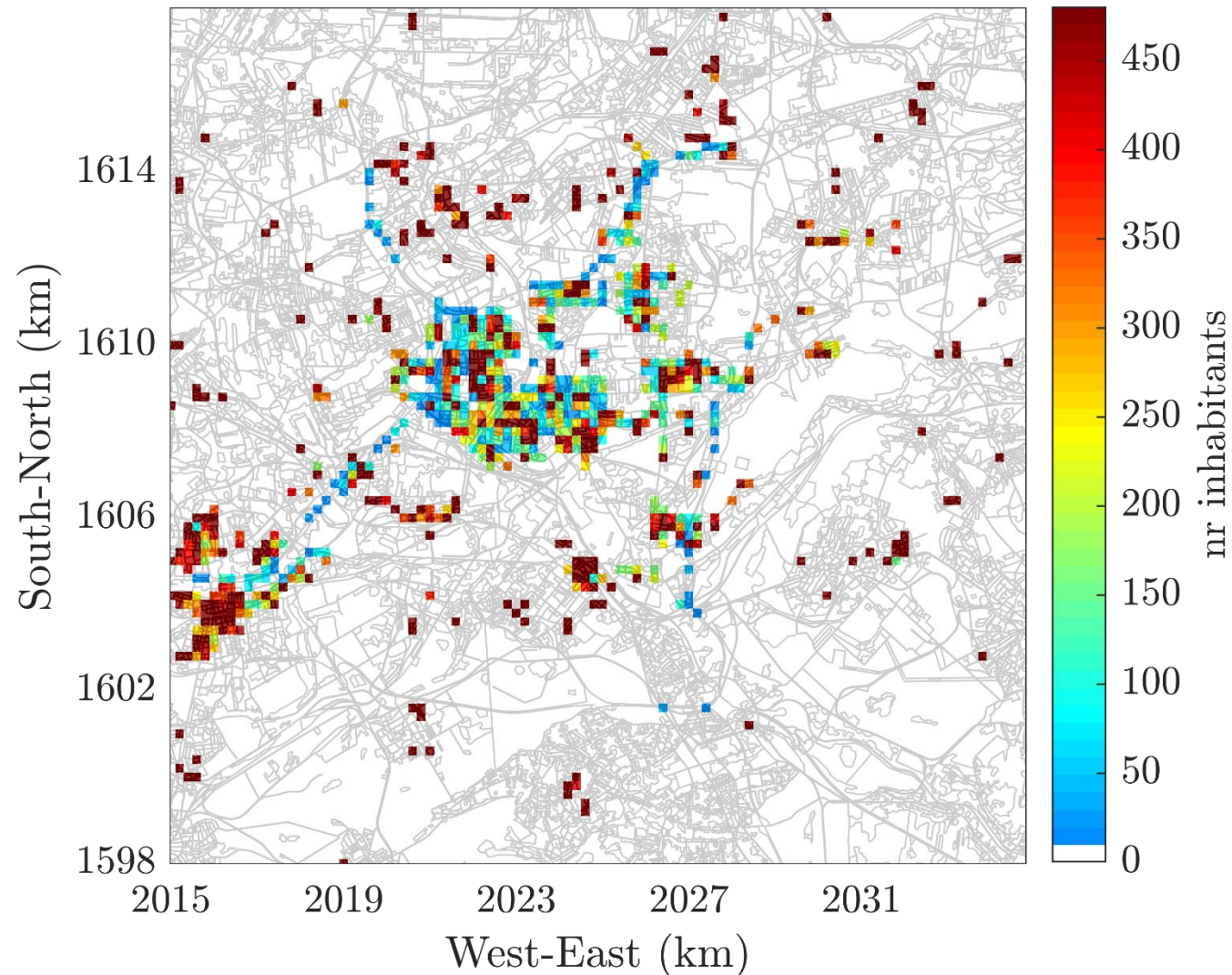


Simulated without adjustment AQS values comparison

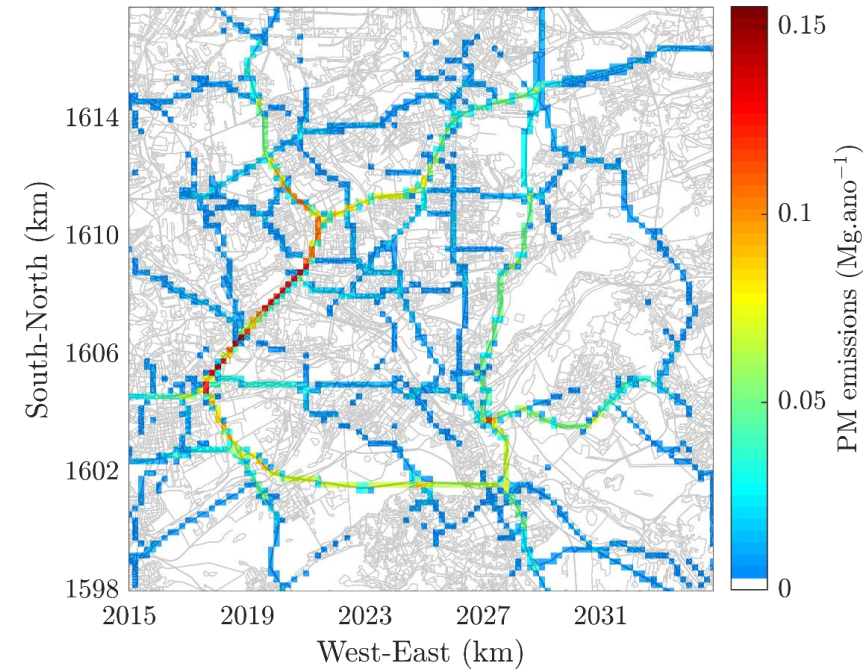
Station		AQS Values	Simulated Values	Contribution by sector for the corresponding cell (%)		
Station	Station_type	Measured value	With Adjustment	Transport sector	Industrial sector	Com. and Res. Sector
PL0237A	Background	30.02	27.30	13.0	26.6	60.4
PL0529A	Background	25.76	45.21	12.5	18.3	69.2
PL0567A	Traffic	58.33	27.1	40.1	14.4	45.5

Factor applied over the whole domain: 2.2

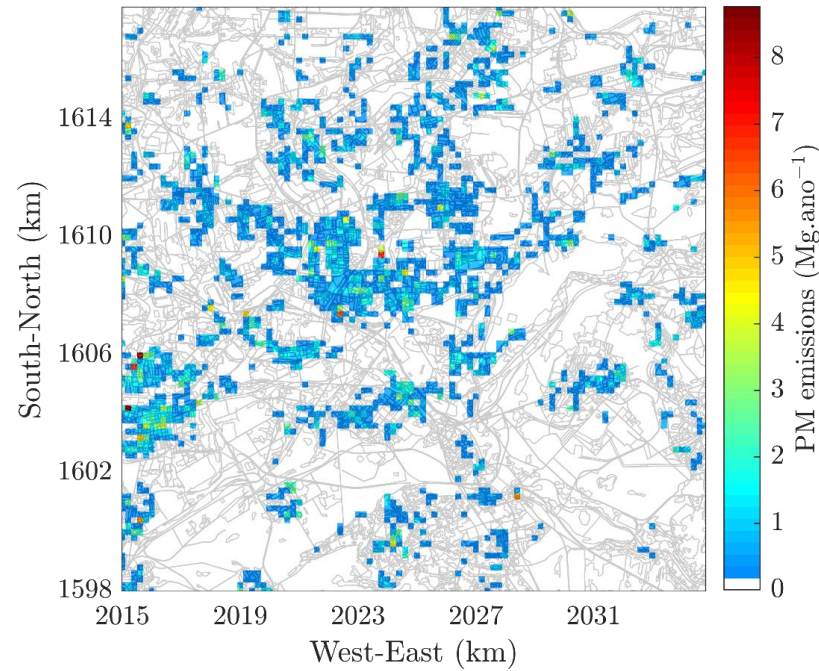
Population exposed to values above EU limits and WHO guidelines



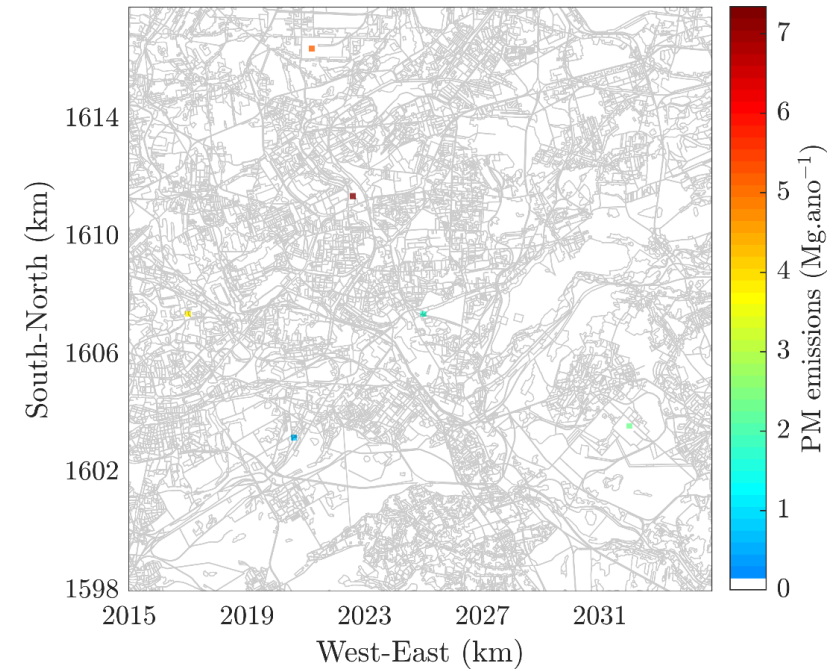
Emissions- PM



Transport



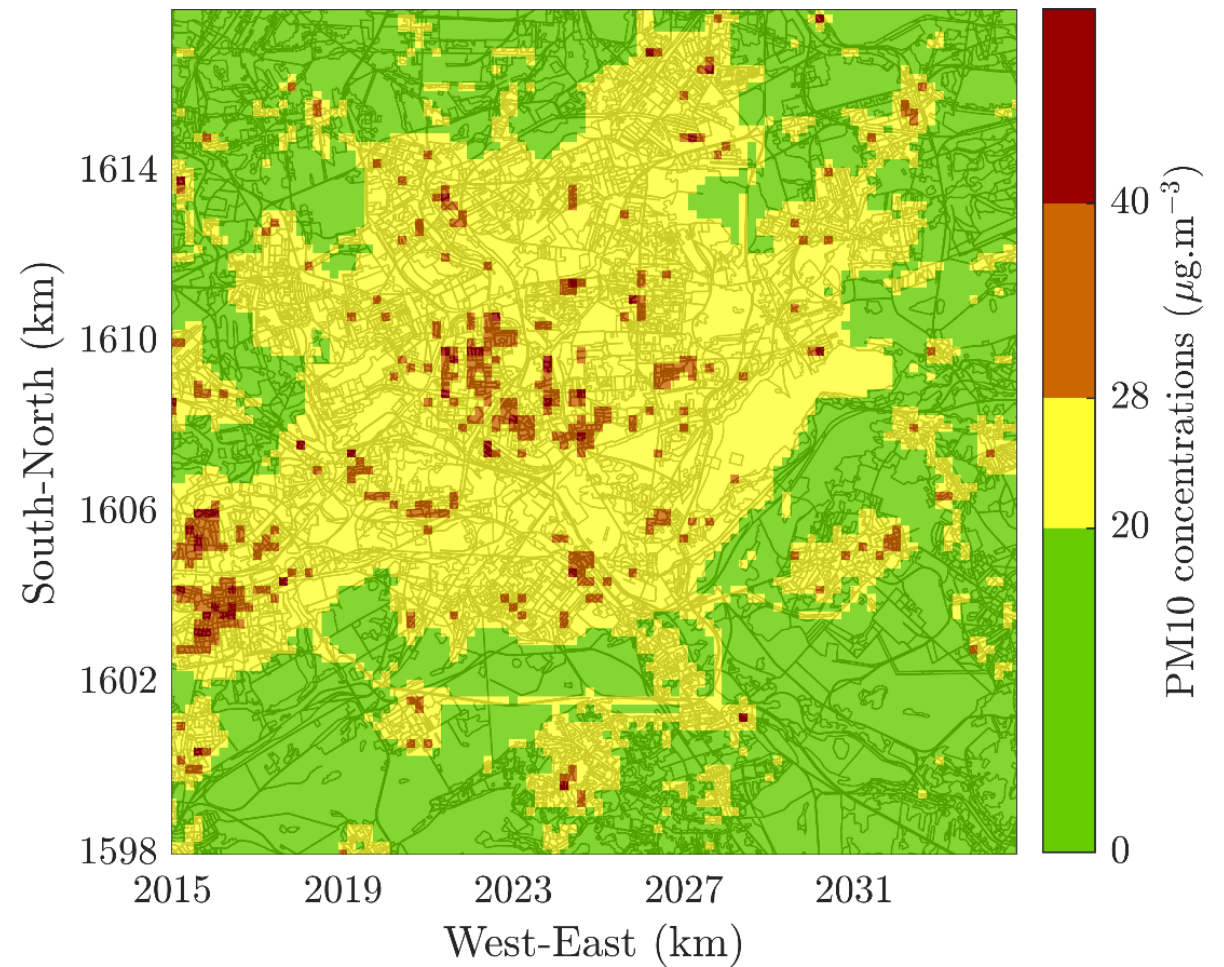
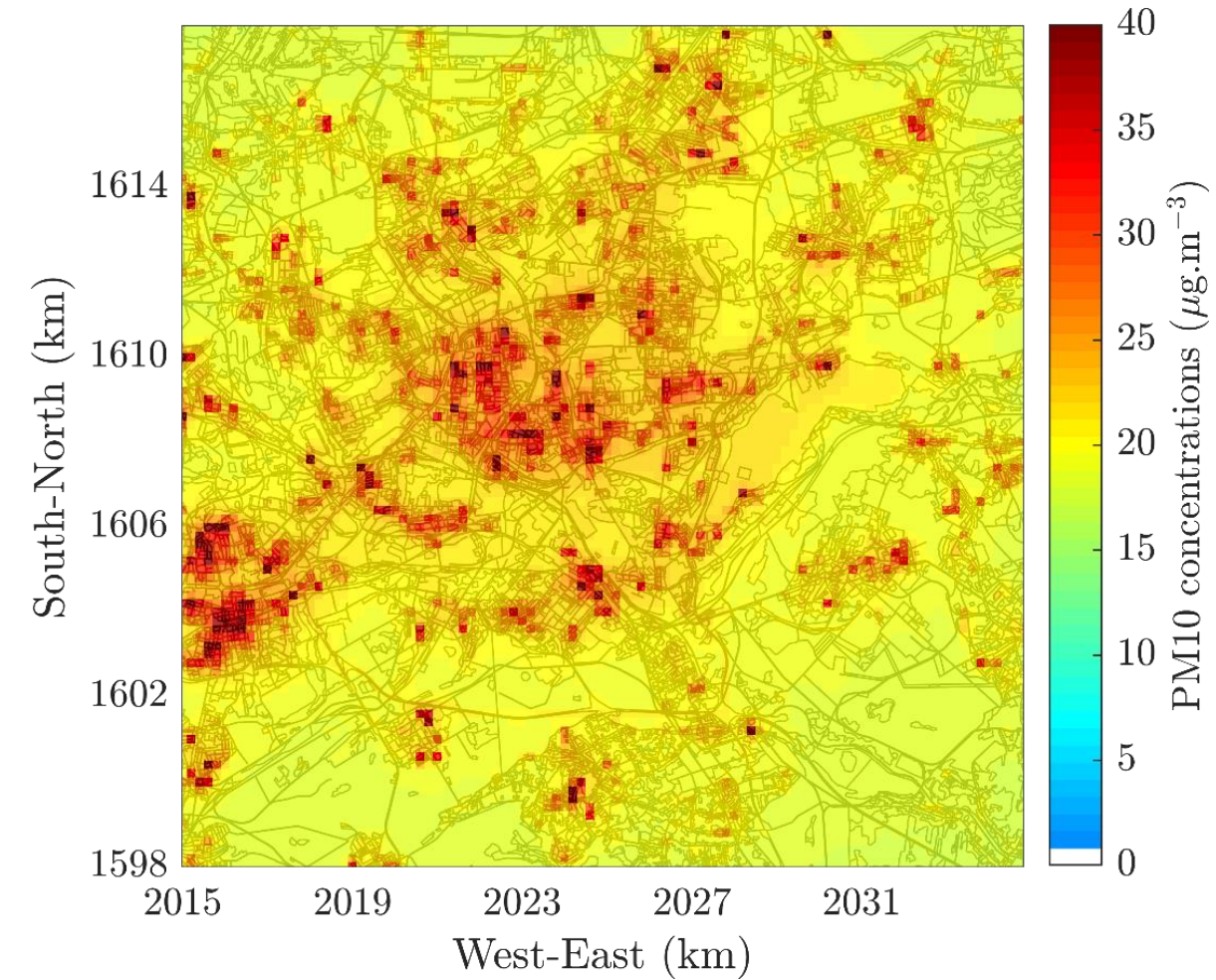
Residential and
commercial



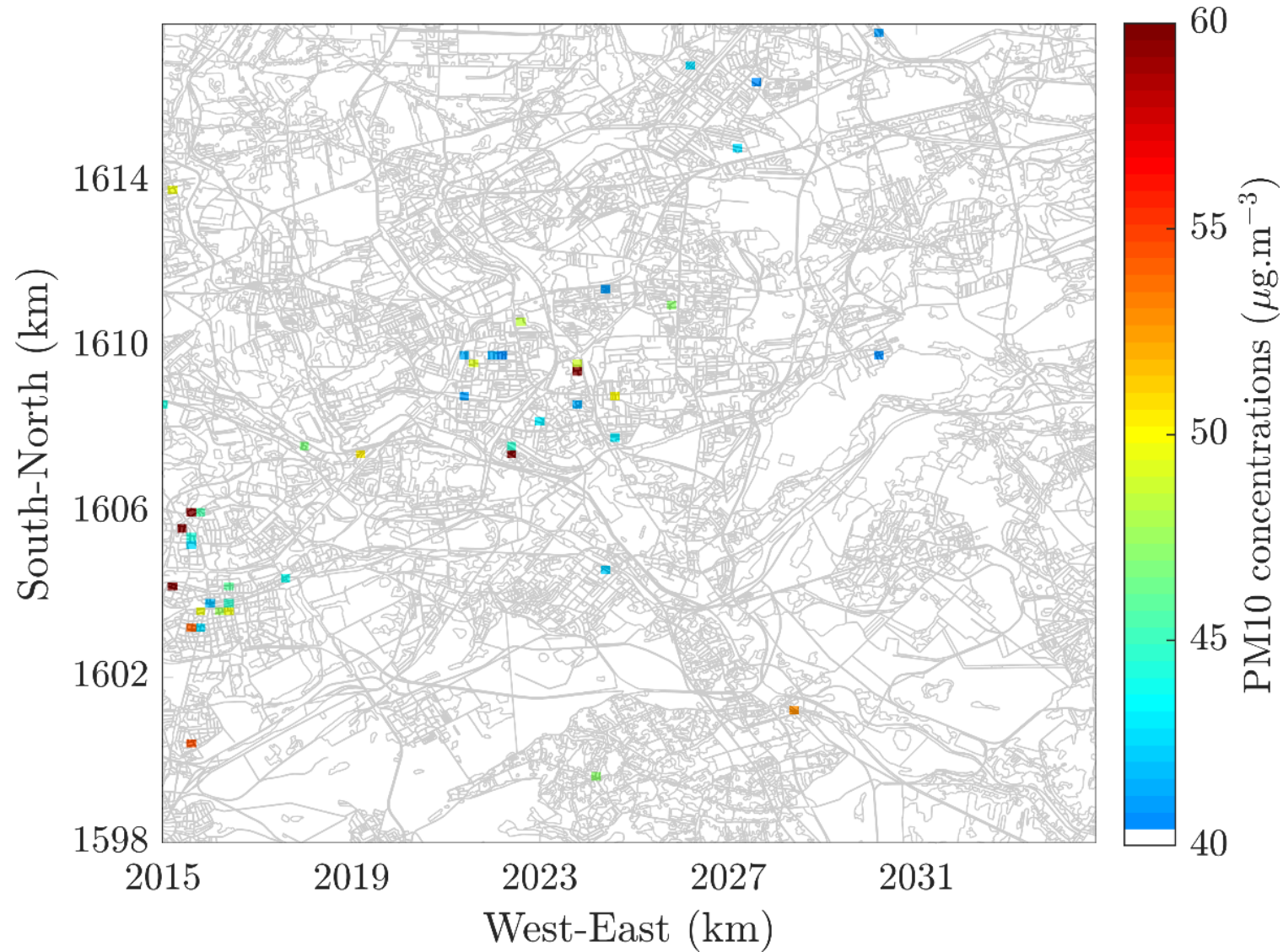
Industrial

PM10

Total concentrations



Cells exceeding the EU limit



Contribution by sector for the whole domain

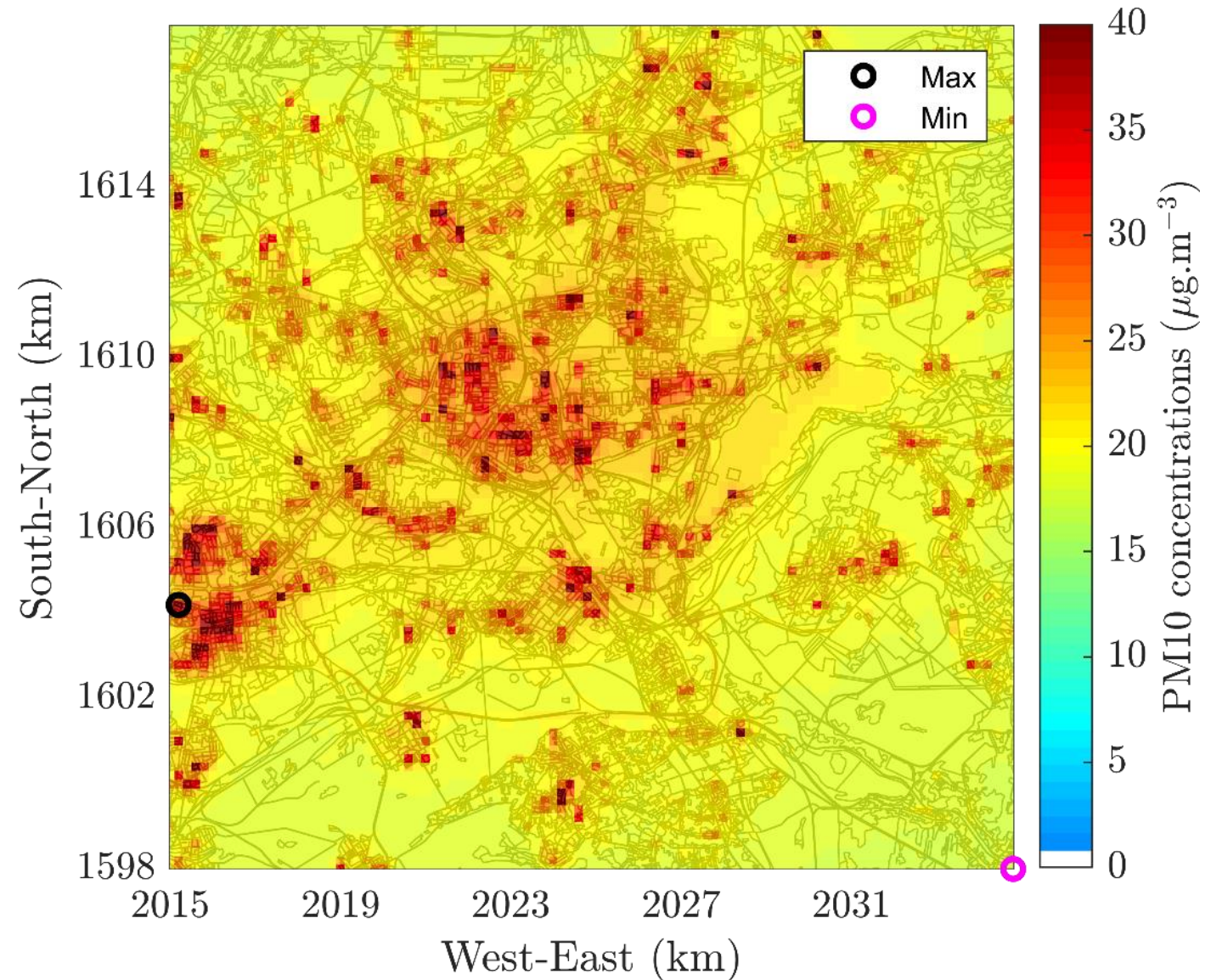
Sector	Original Approach (%)
Transport	4.2
Industrial	4.0
Residential and commercial	91.8
Total	100

Maximum, minimum and mean

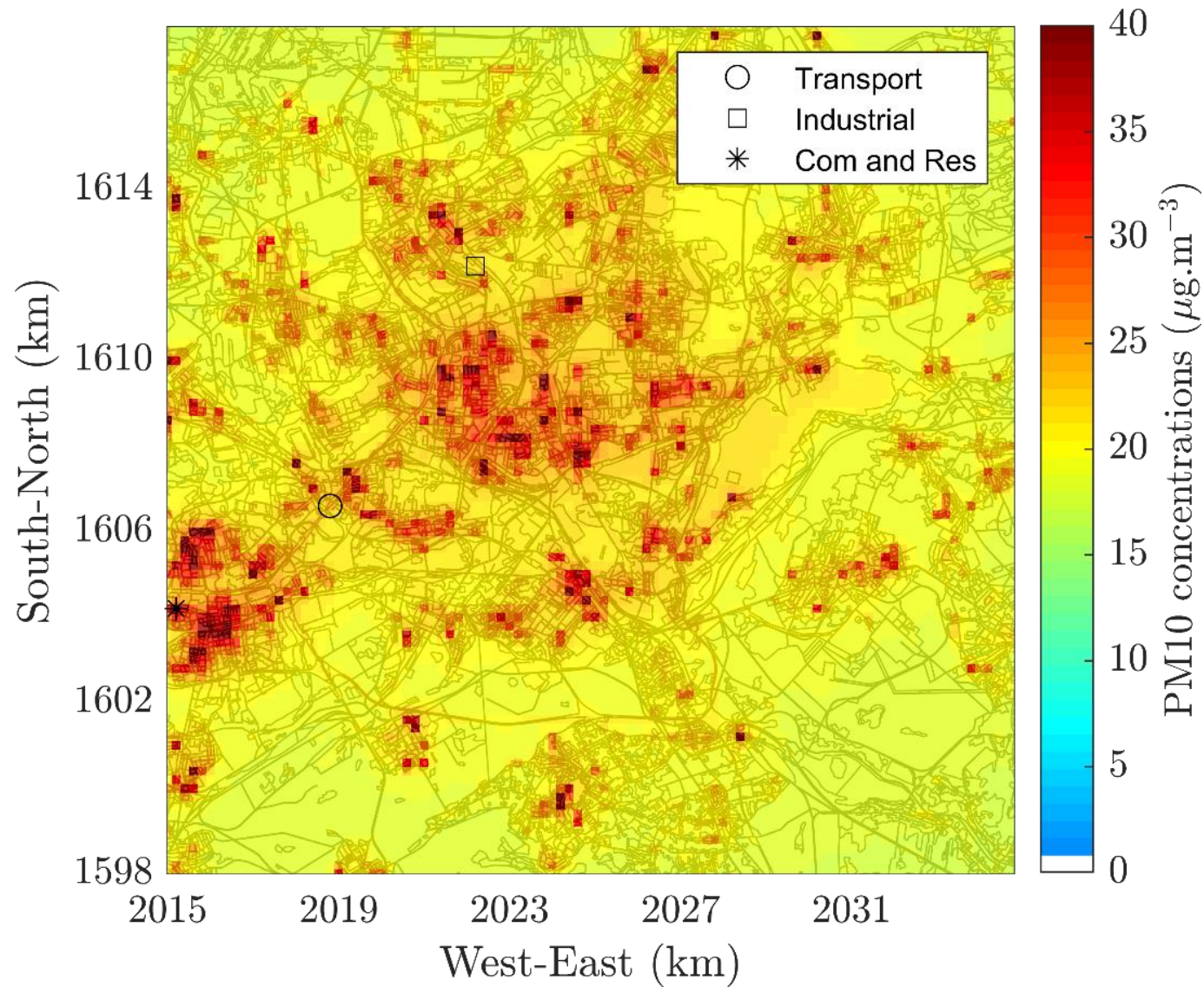
	Total concentration
MAX	75.3
MIN	17.7
MEAN	21.0

Contribution by sector for the cell with the maximum and minimum value

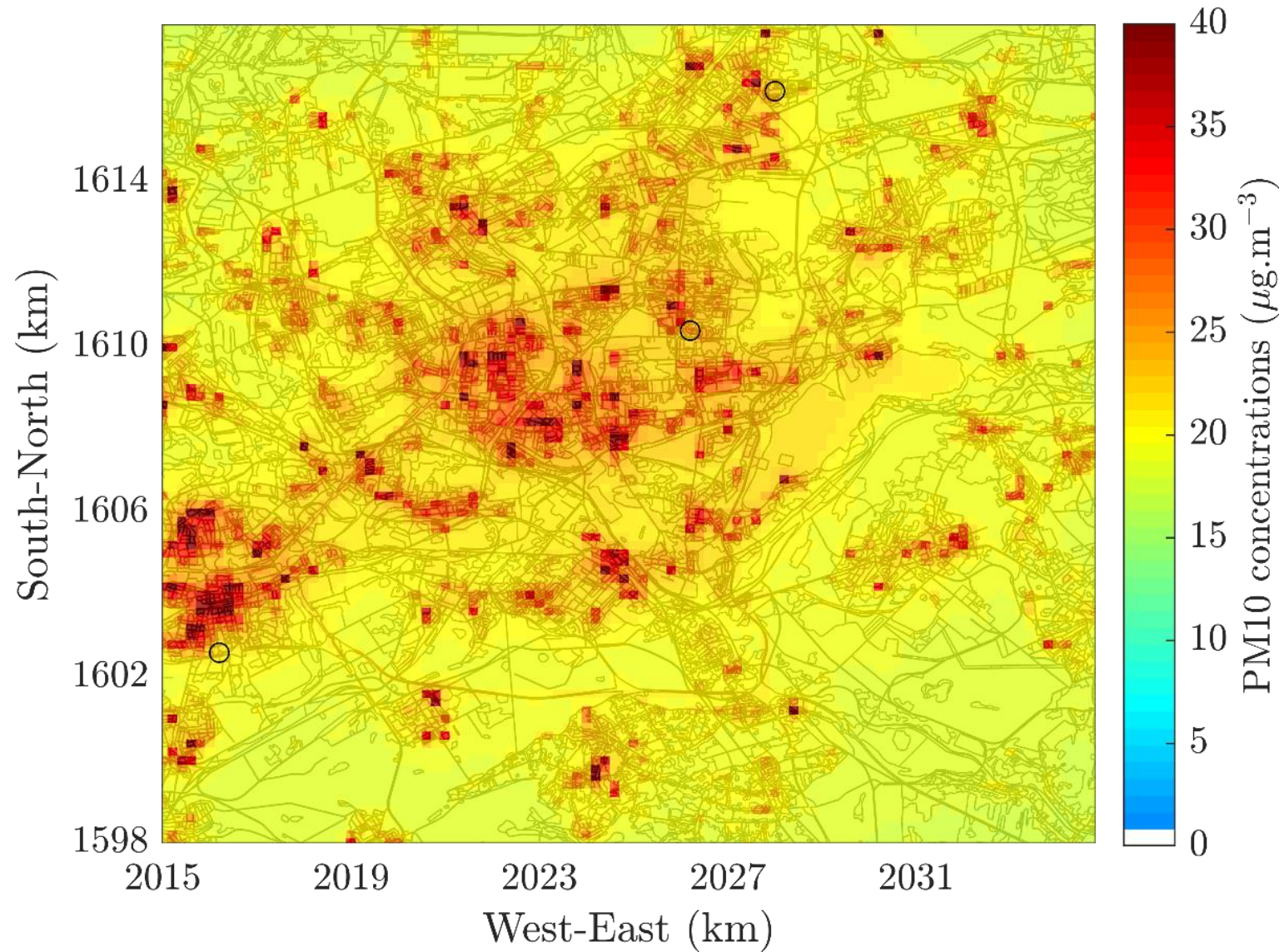
Sector	Contribution by sector for the cell with max value (%)
	Max
Transport	0.2
Industrial	0.2
Commercial and residential	99.6



Location of the maximum value by sector



AQS locations

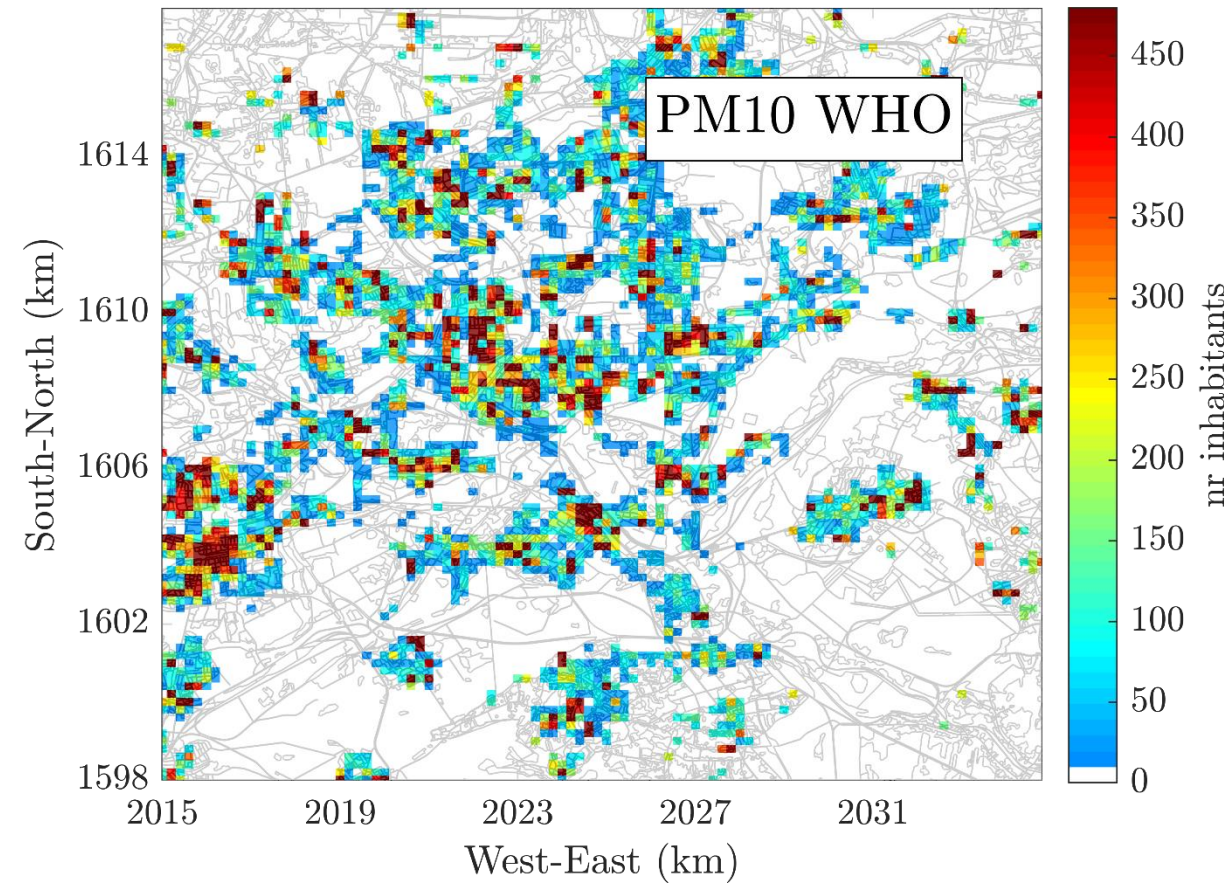
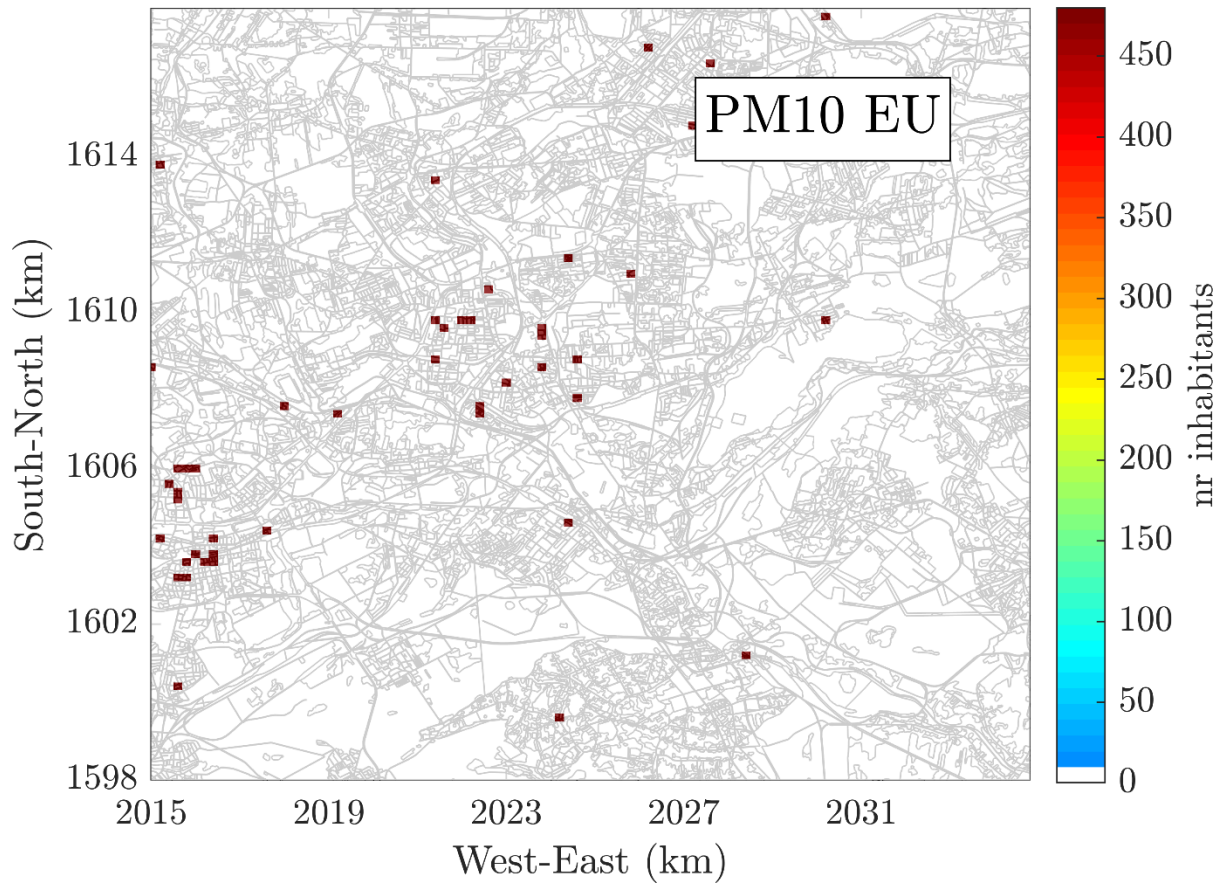


Simulated without adjustment AQS values comparison

Station		AQS Values	Simulated Values	Contribution by sector for the corresponding cell (%)		
Station	Station_type	Measured value	With Adjustment	Transport sector	Industrial sector	Com. and Res. Sector
PL0237A	Background	41.21	22.62	1.9	2.9	95.2
PL0529A	Background	36.96	25.58	2.1	2.5	95.4
PL0567A	Traffic	46.37	21.33	8.1	2.7	89.2

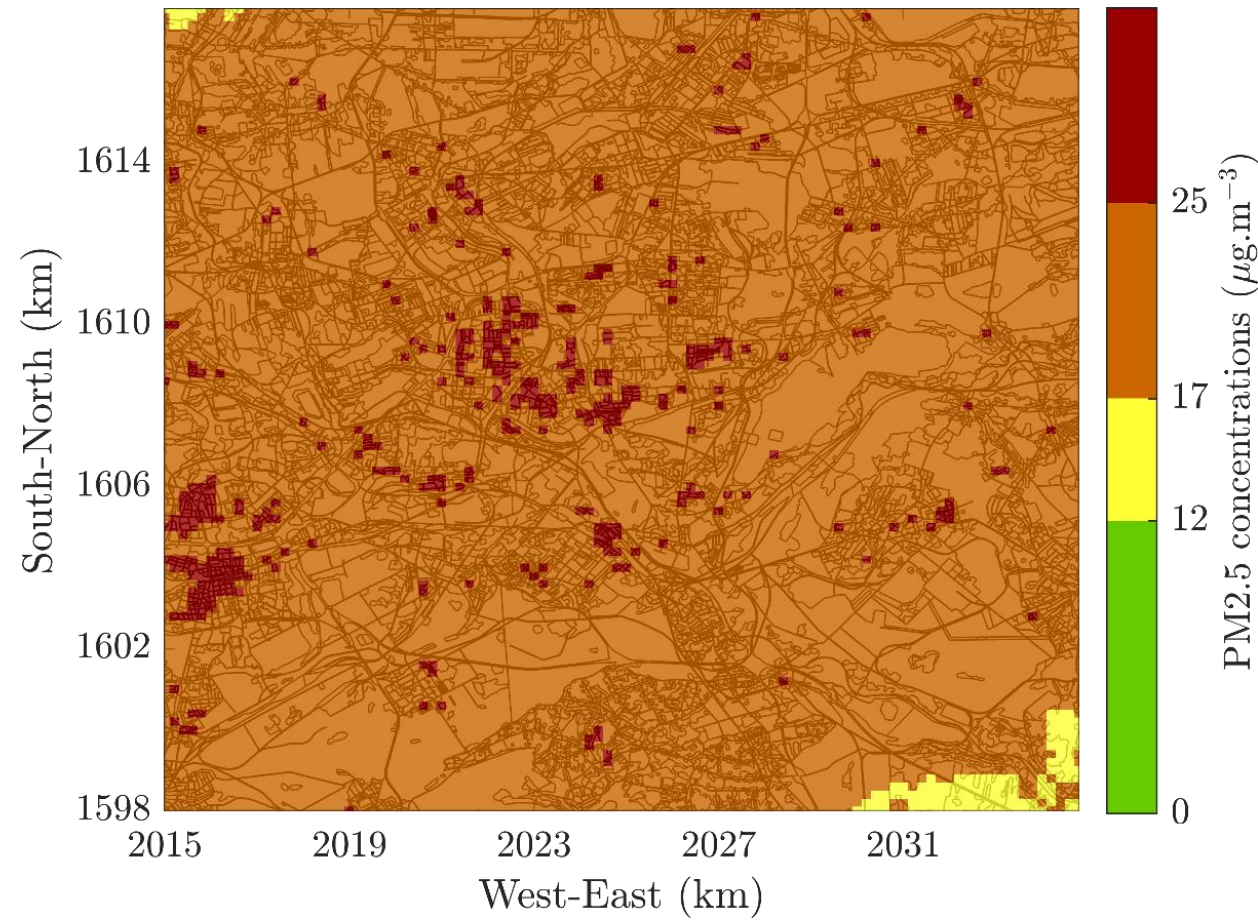
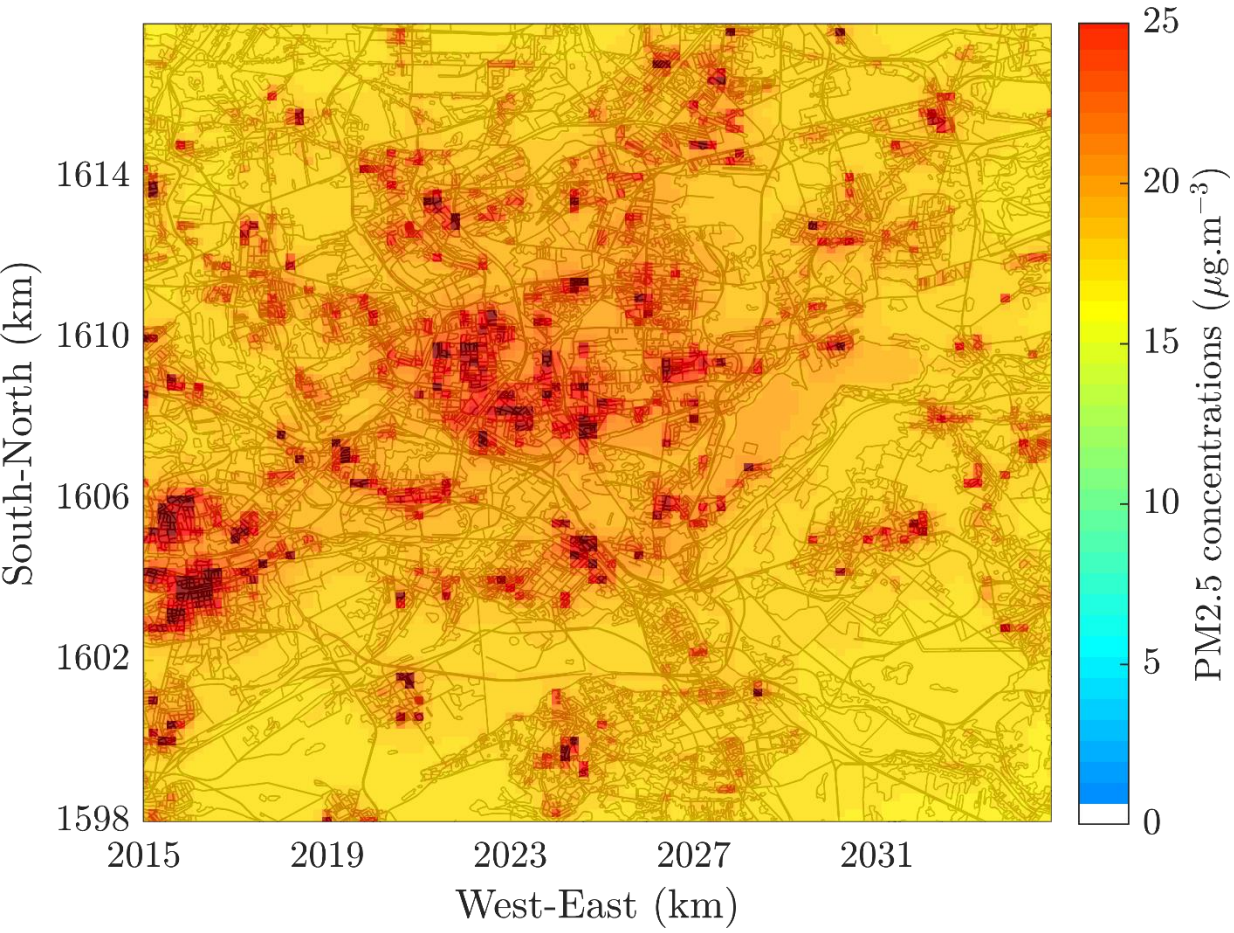
Factor applied over the whole domain: 1.1

Population exposed to values above EU limits and WHO guidelines

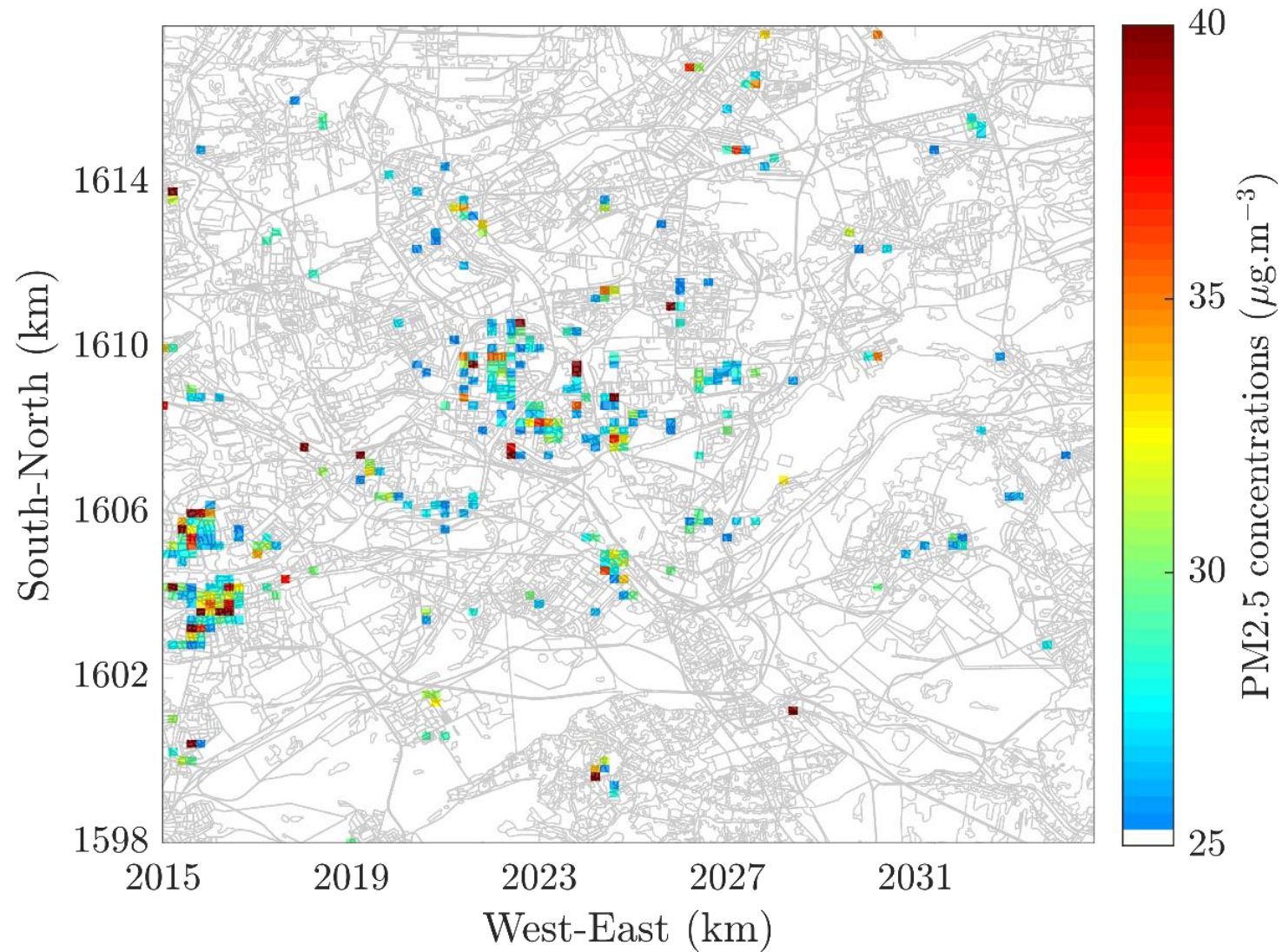


PM25

Total concentrations



Cells exceeding the EU limit



Contribution by sector for the whole domain

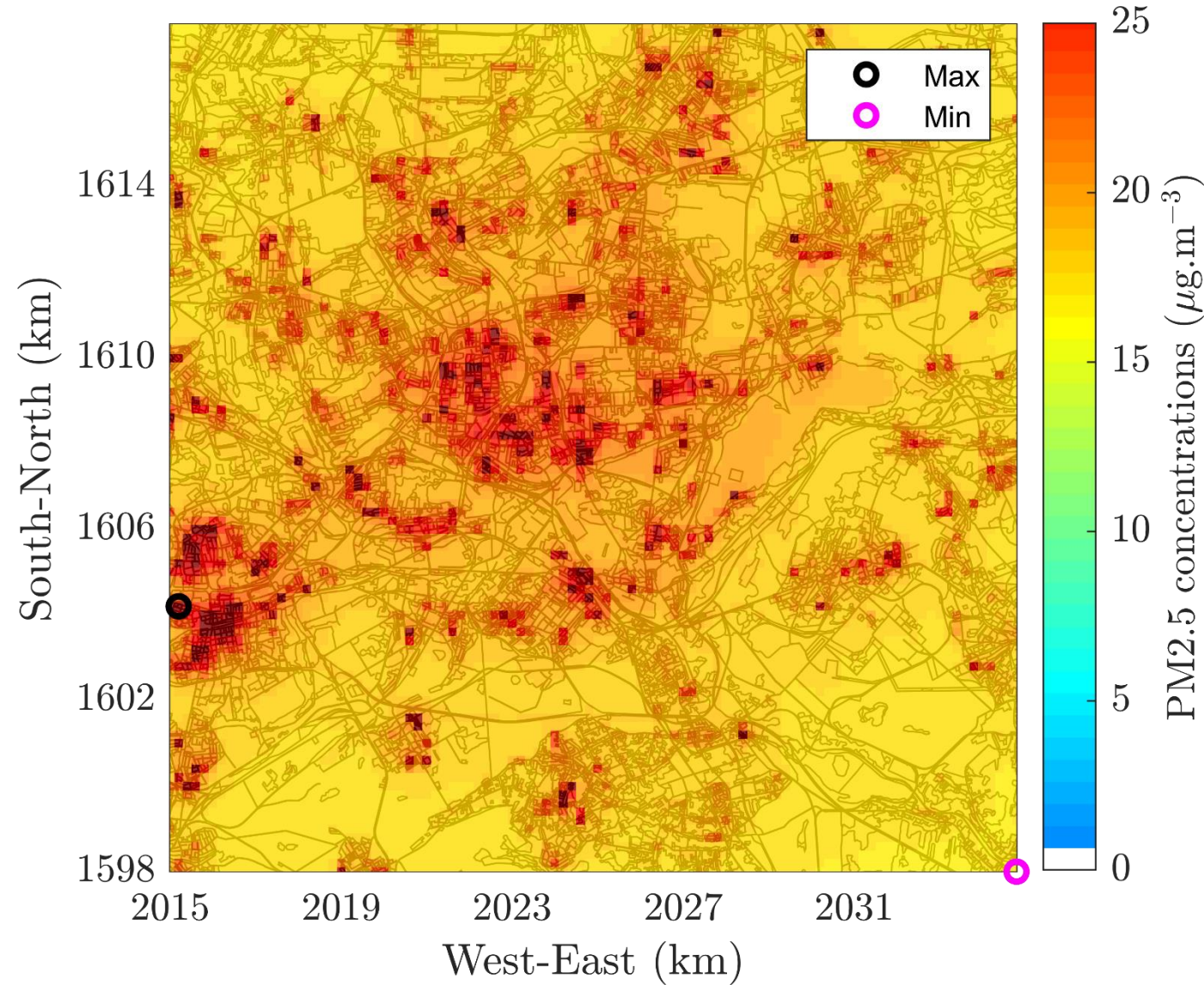
Sector	Original Approach (%)
Transport	2.2
Industrial	4.1
Residential and commercial	93.7
Total	100

Maximum, minimum and mean

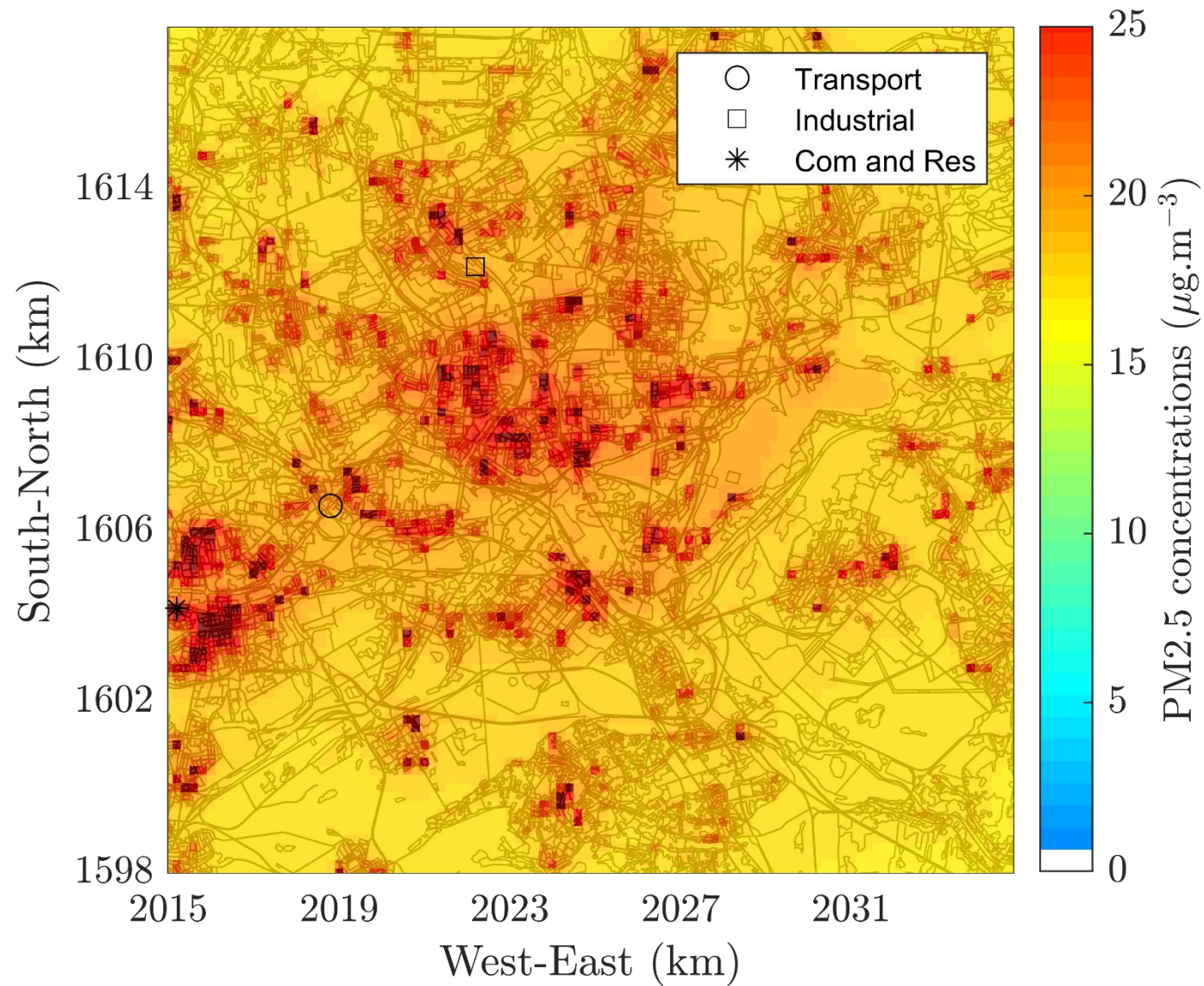
	Total Concentration
MAX	62.1
MIN	16.8
MEAN	19.3

Contribution by sector for the cell with the maximum

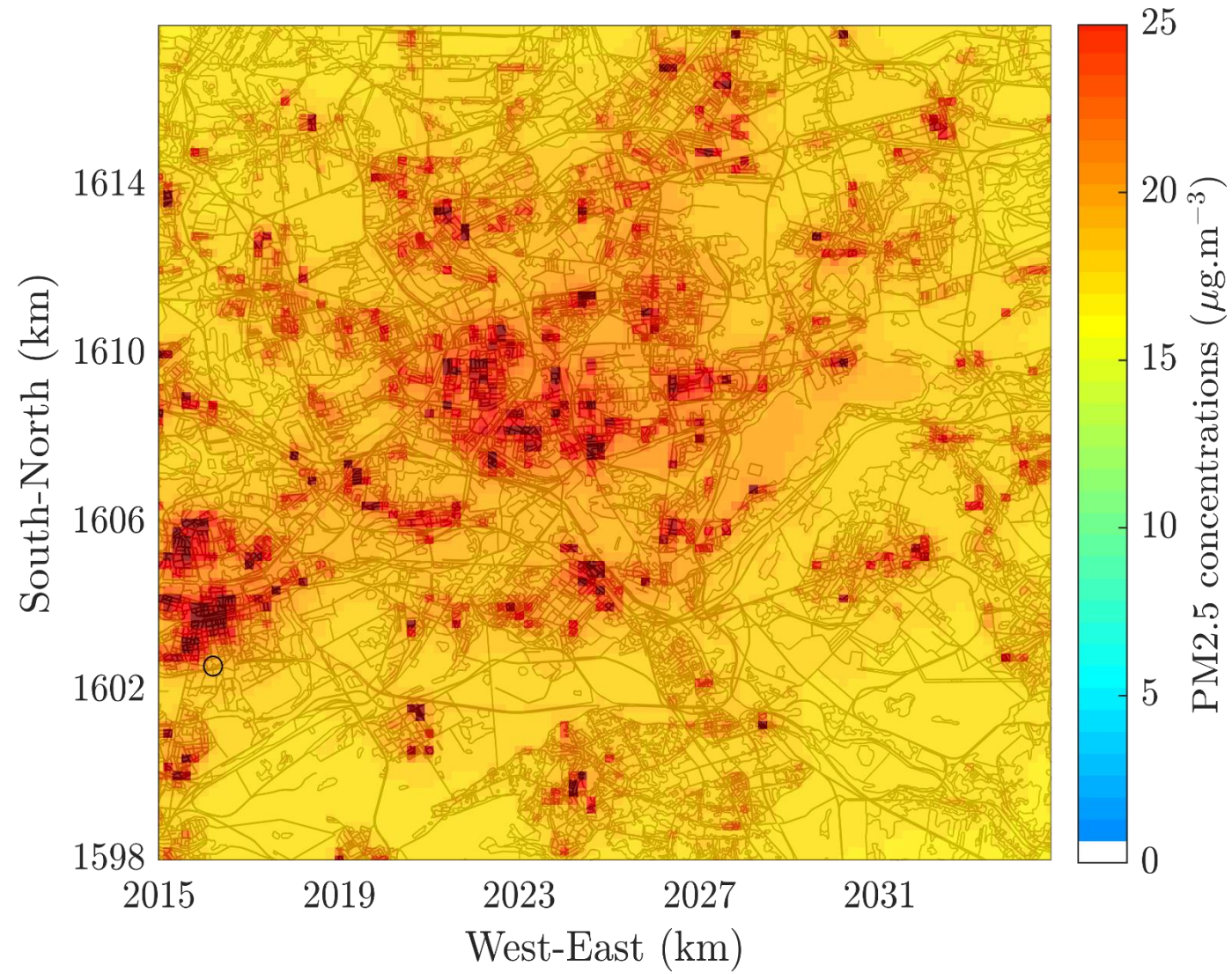
Sector	Contribution by sector for the cell with max value (%)
	Max
Transport	0.1
Industrial	0.2
Commercial and residential	99.7



Location of the maximum value by sector



AQS locations



Simulated without adjustment AQS values comparison

Station		AQS Values	Simulated Values	Contribution by sector for the corresponding cell (%)		
Station	Station_type	Measured value	With Adjustment	Transport sector	Industrial sector	Com. and Res. Sector
PL0567A	Traffic	33.13	19.53	4.3	2.8	92.9

Factor applied over the whole domain: 0.86

Population exposed to values above EU limits and WHO guidelines

