

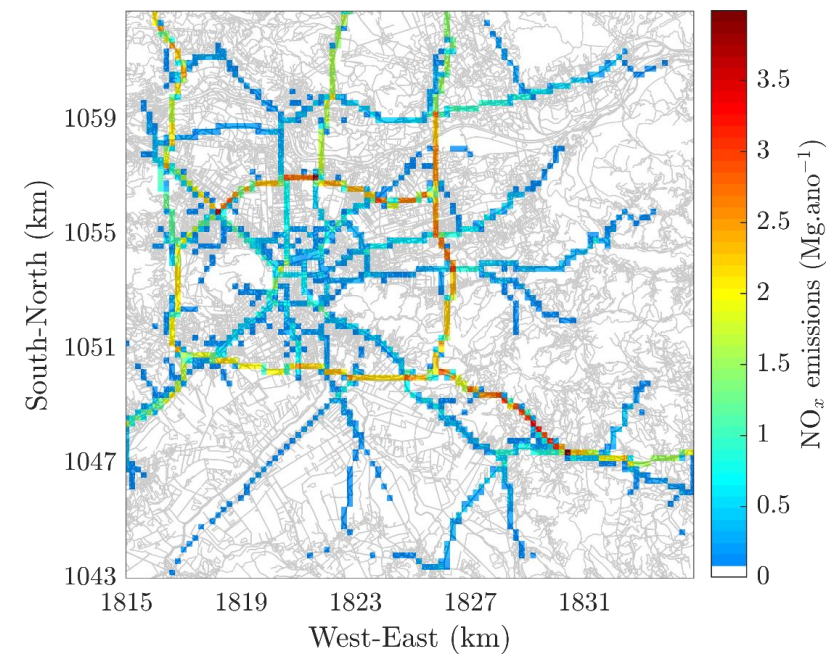
Ljubljana

Summary AQ results

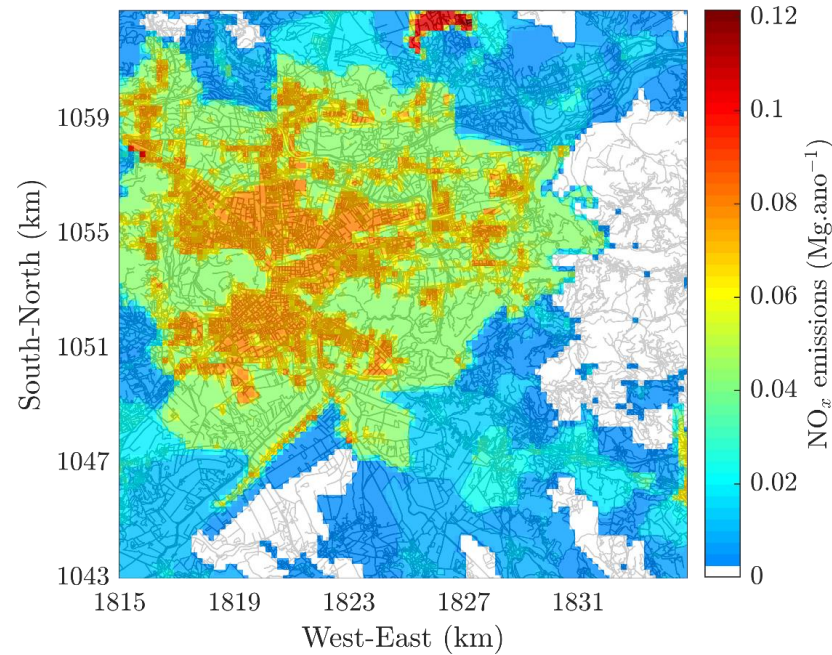
Approach

The background value was obtained from PSAT and was applied over the whole domain; For the sector contribution we didn't account the background

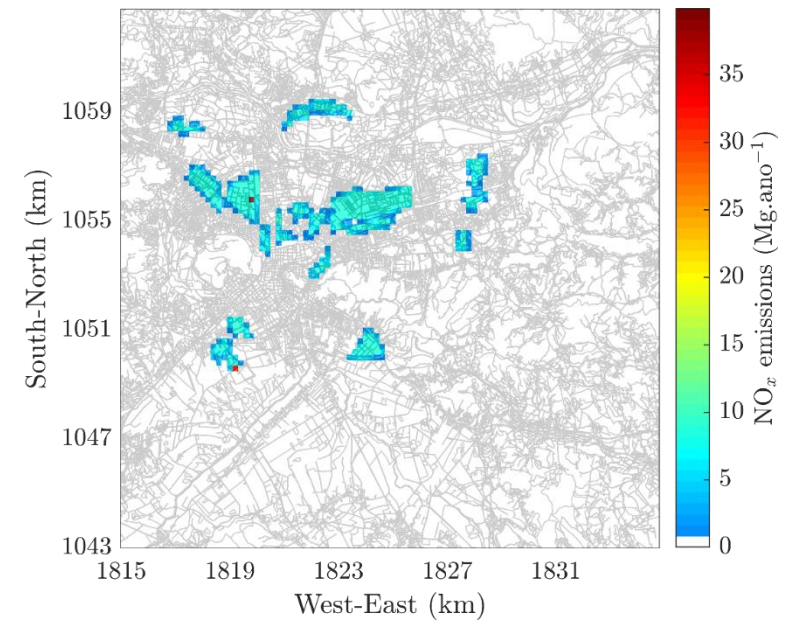
Emissions- NOx



Transport



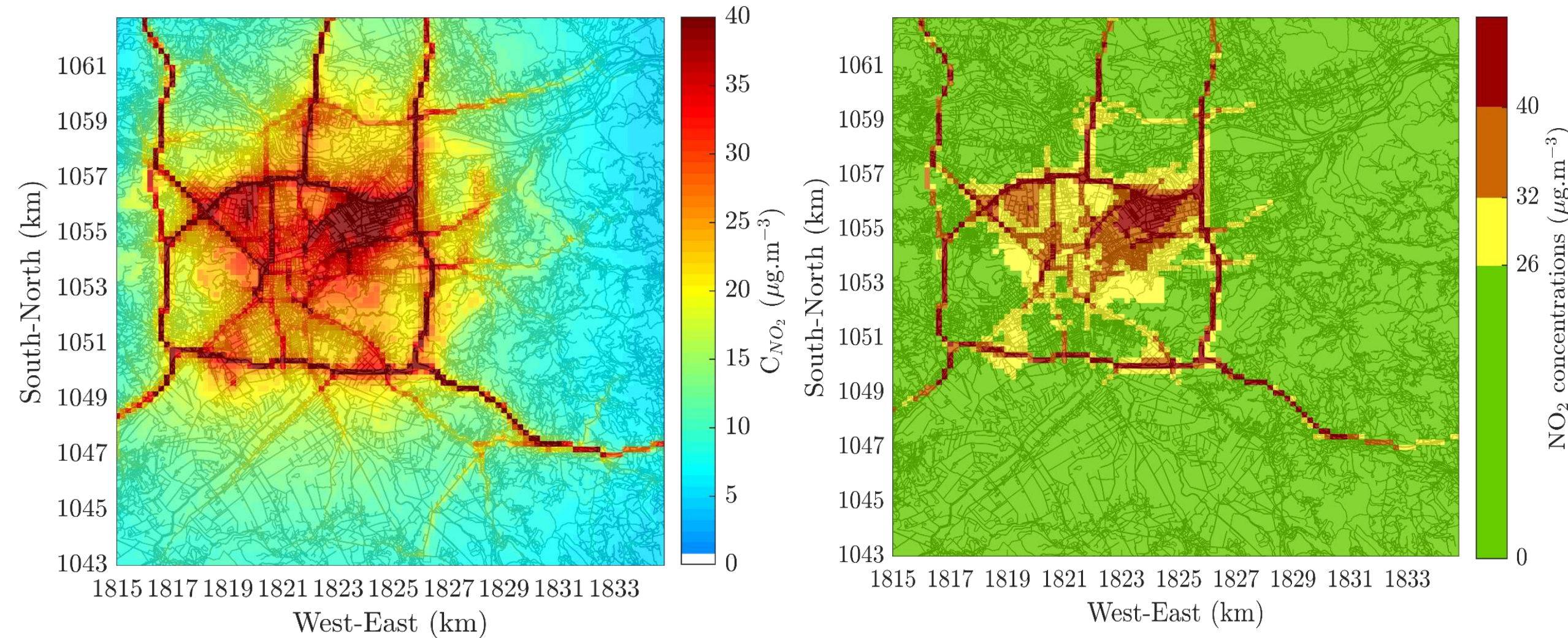
Residential and commercial



Industrial

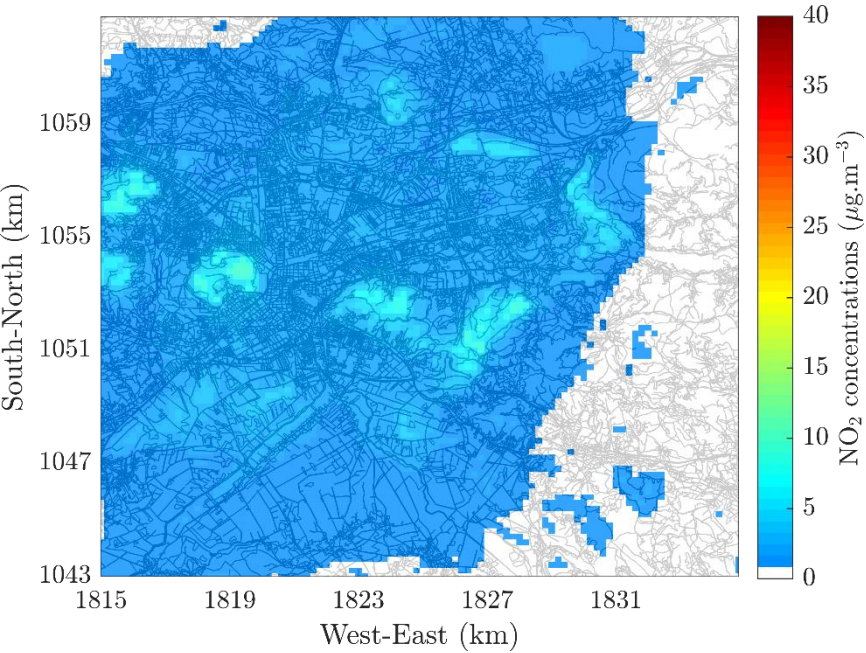
NO₂

Total concentrations

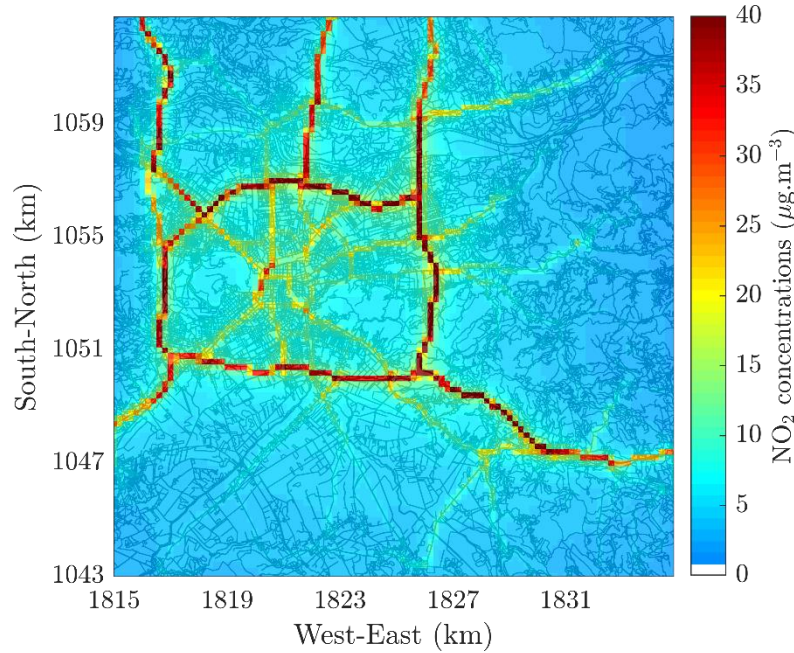


Concentrations by sector

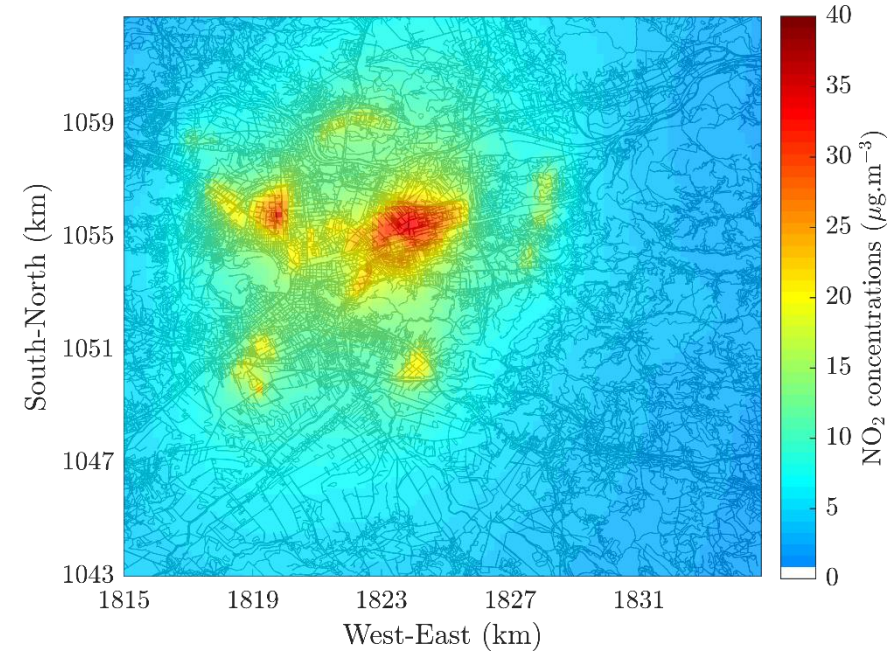
IRCI



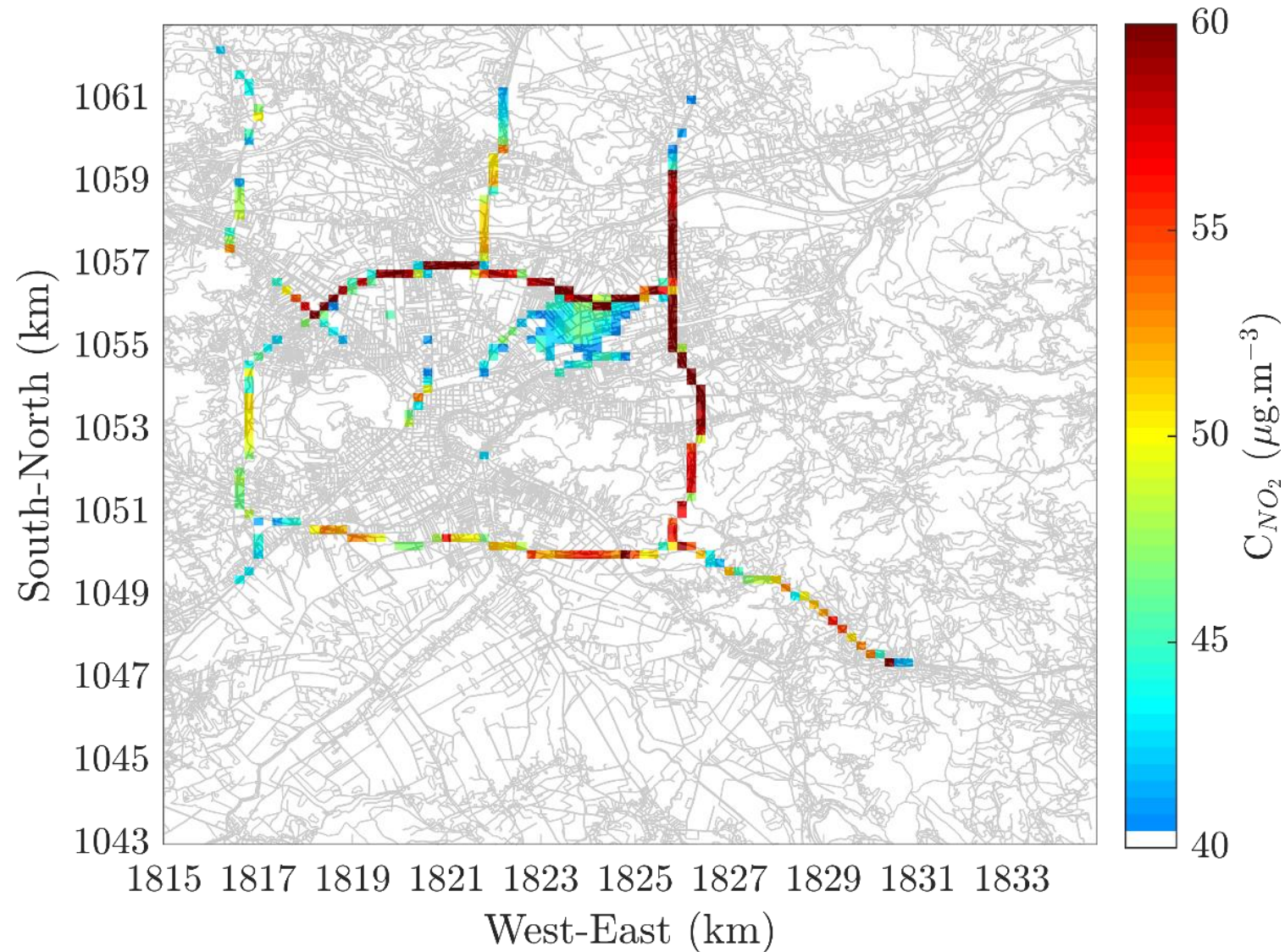
Transport



Industrial



Cells exceeding the EU limit



Contribution by sector for the whole domain

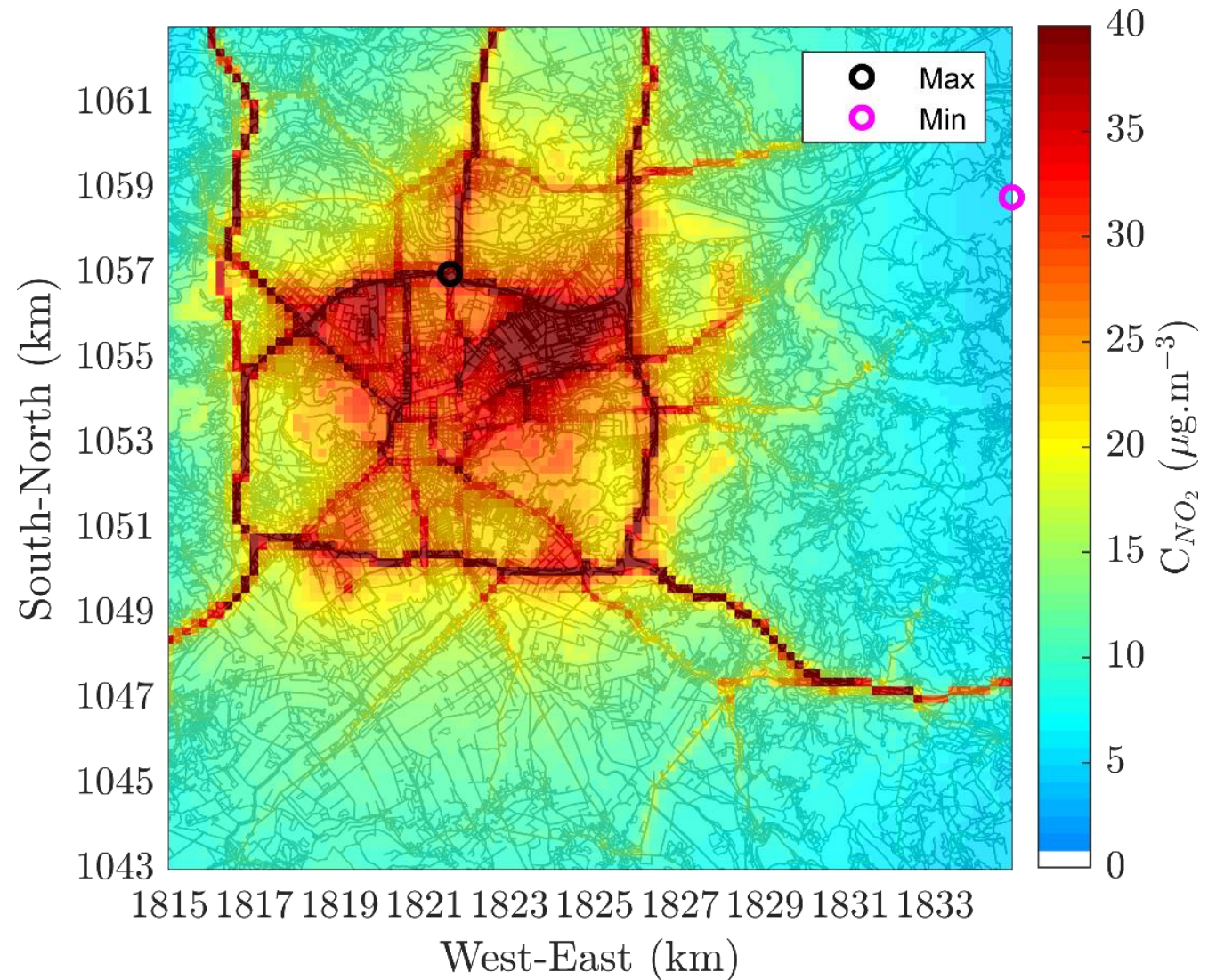
Sector	Original Approach (%)
Transport	24.8
Industrial	62.0
Residential and commercial	13.2
Total	100

Maximum, minimum and mean with and without adjustment

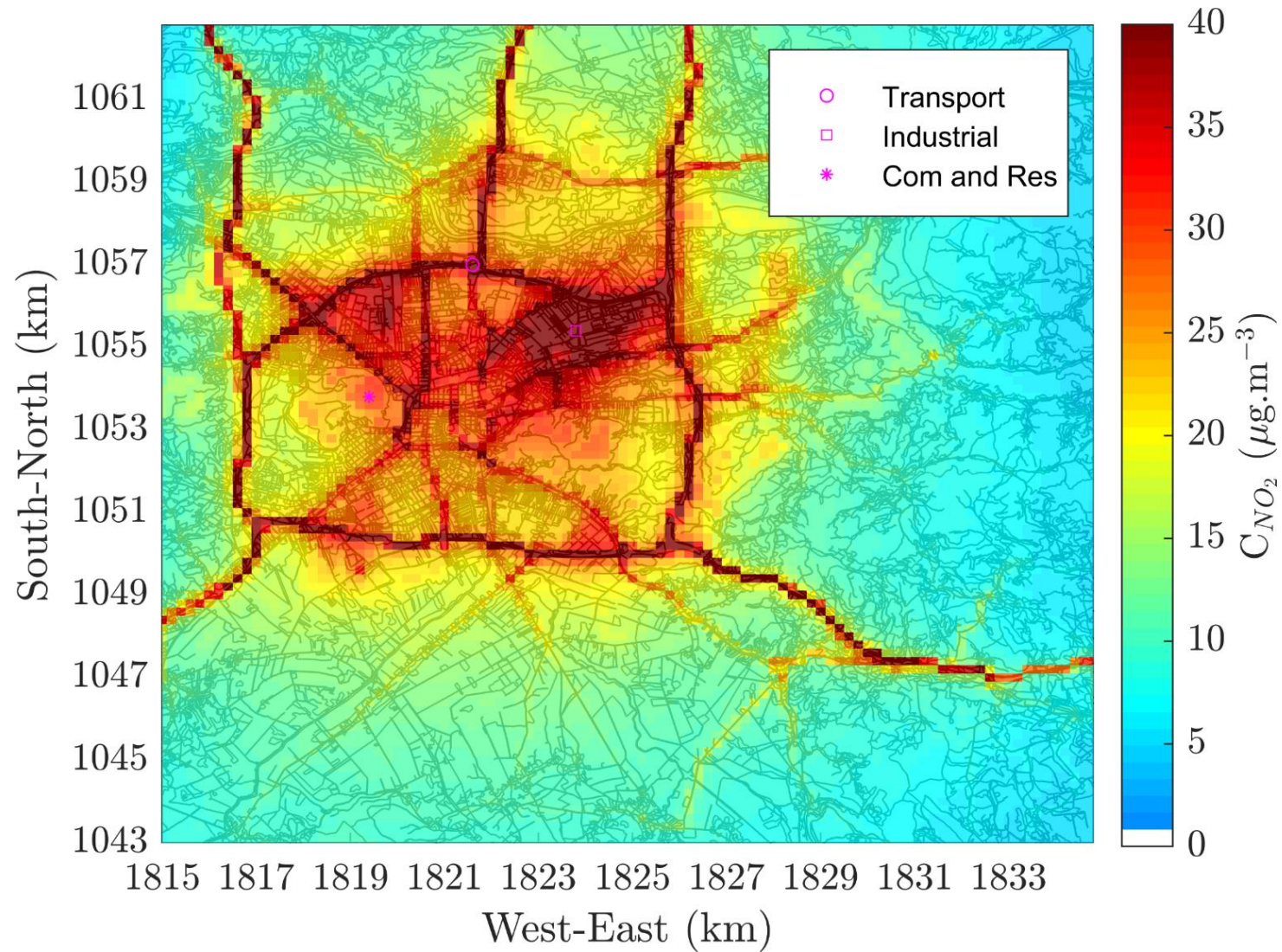
	Without adjustment	With adjustment
MAX	47.4	79.0
MIN	2.9	4.9
MEAN	9.7	16.1

Contribution by sector for the cell with the maximum

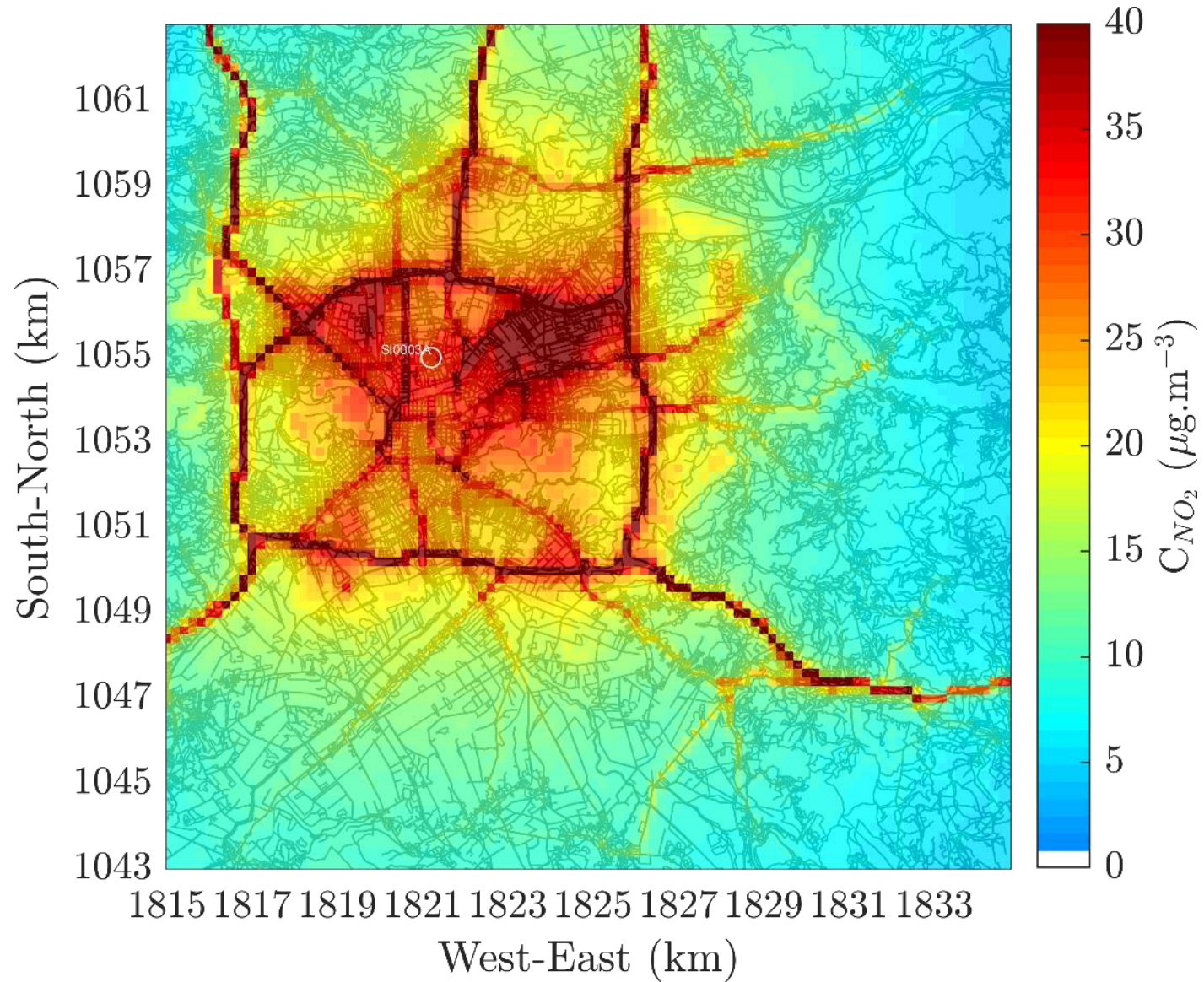
Sector	Contribution by sector for the cell with max value (%)
	Max
Transport	80.7
Industrial	17.0
Commercial and residential	2.3



Location of the maximum value by sector



AQS locations

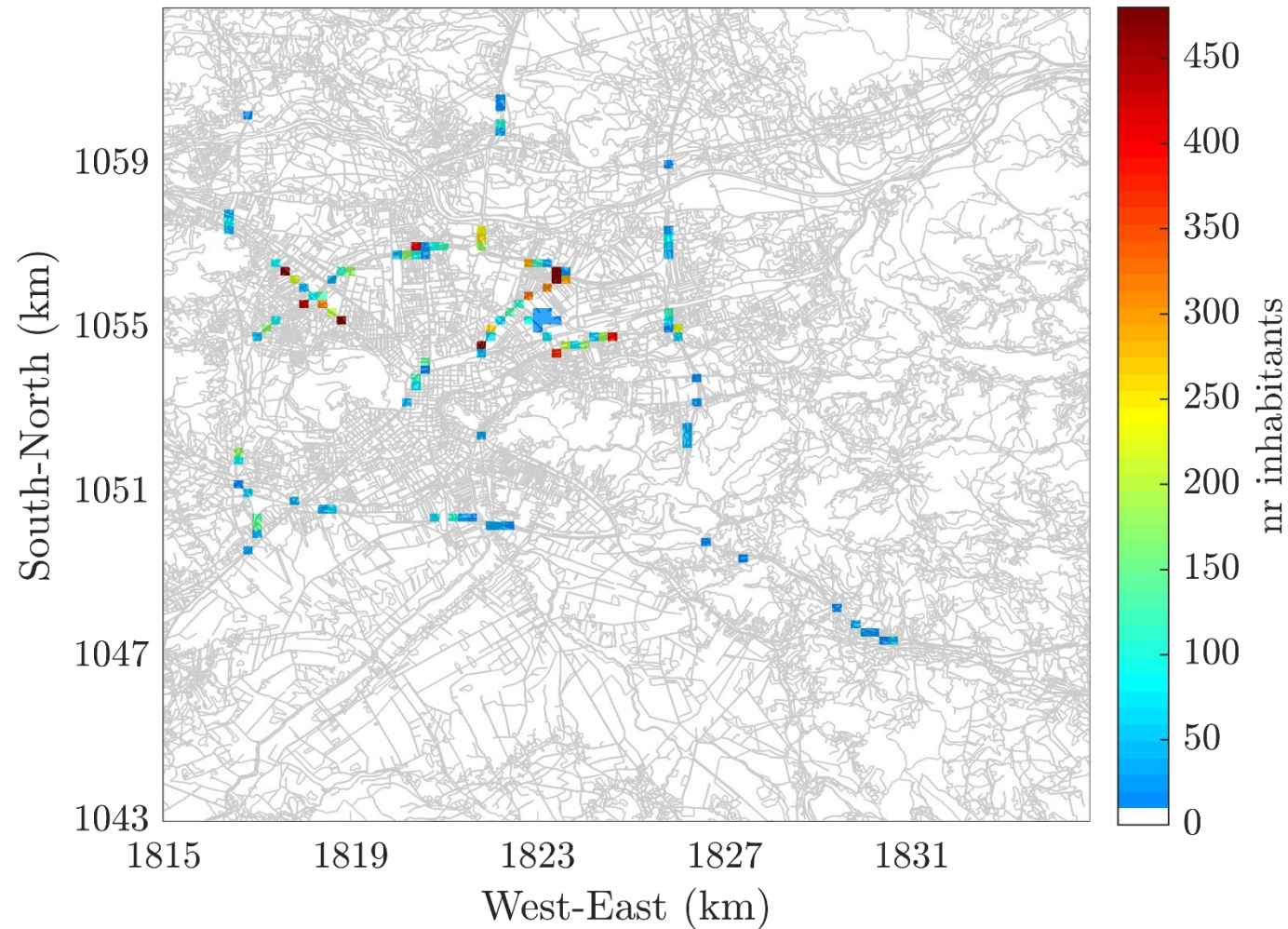


Simulated without adjustment AQS values comparison

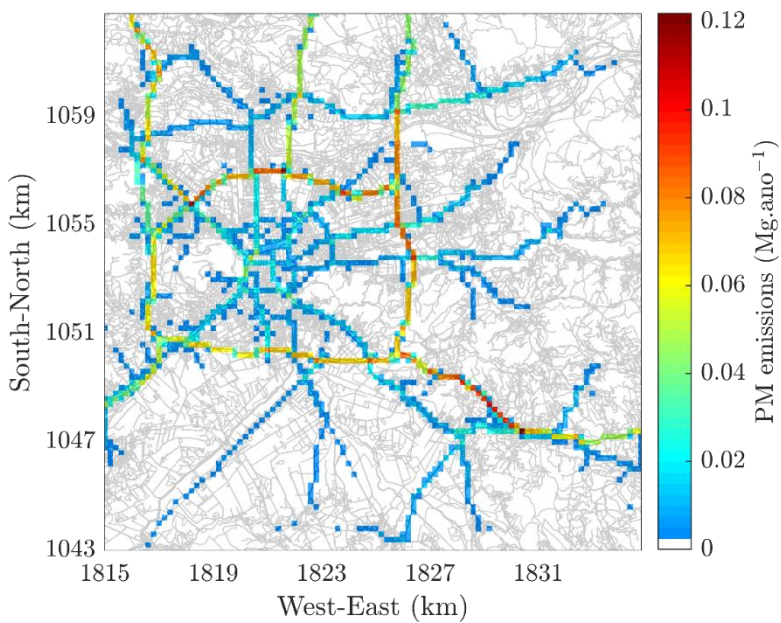
Station		AQS Values	Simulated Values		Contribution by sector for the corresponding cell (%)		
Station	Station_type	Measured value	Without Adjustment	With Adjustment	Transport sector	Industrial sector	Com. and Res. Sector
SI0003A	Urban Background	29.7	17.8	29.7	31.7	60.7	7.6

Factor applied over the whole domain: **1.66**

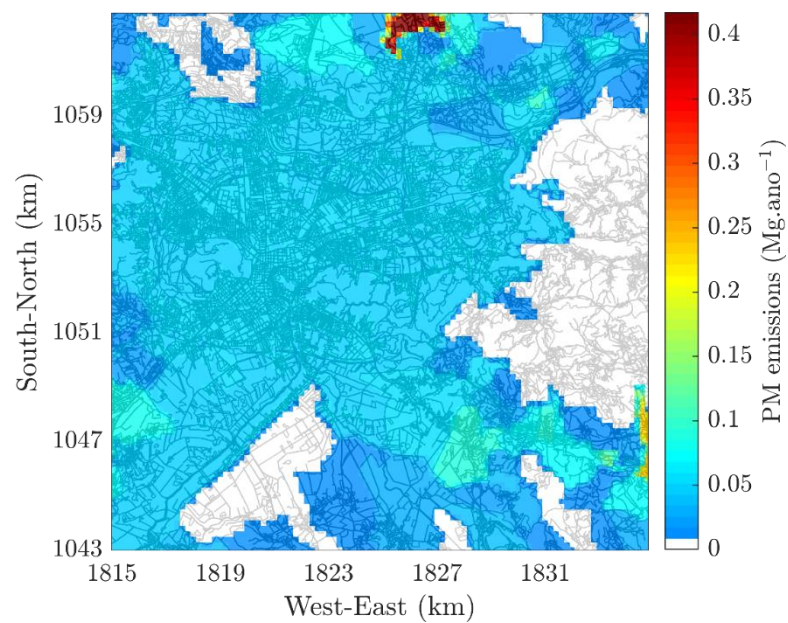
Population exposed to values above EU limits and WHO guidelines



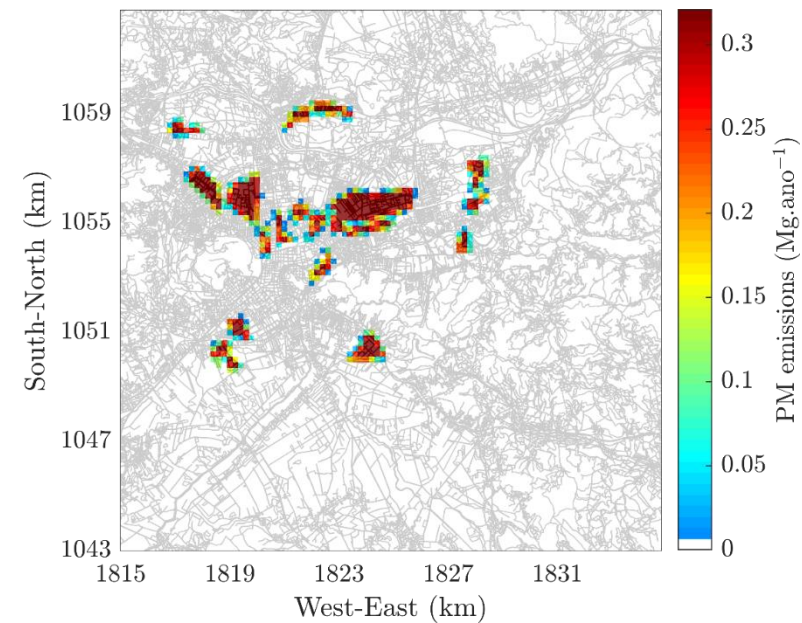
Emissions - PM



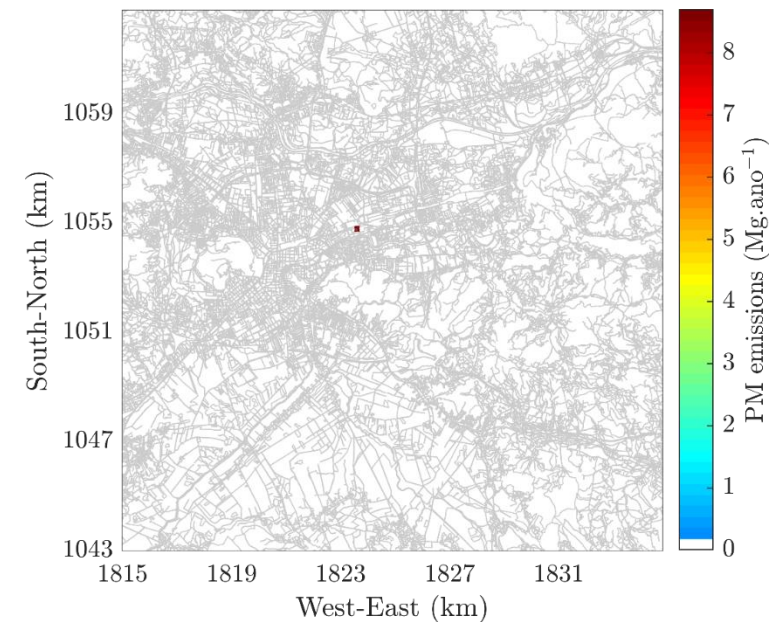
Transport



Residential and commercial

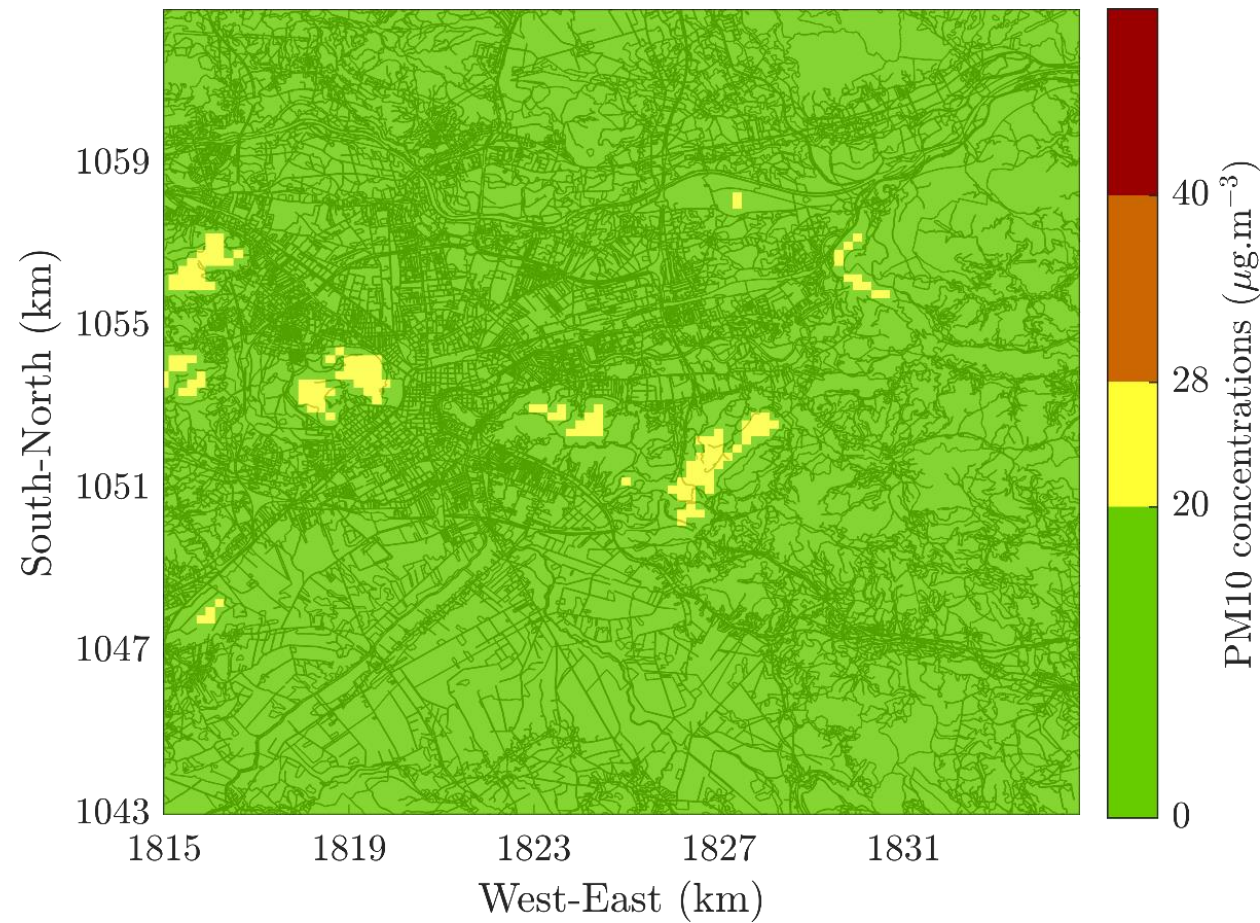
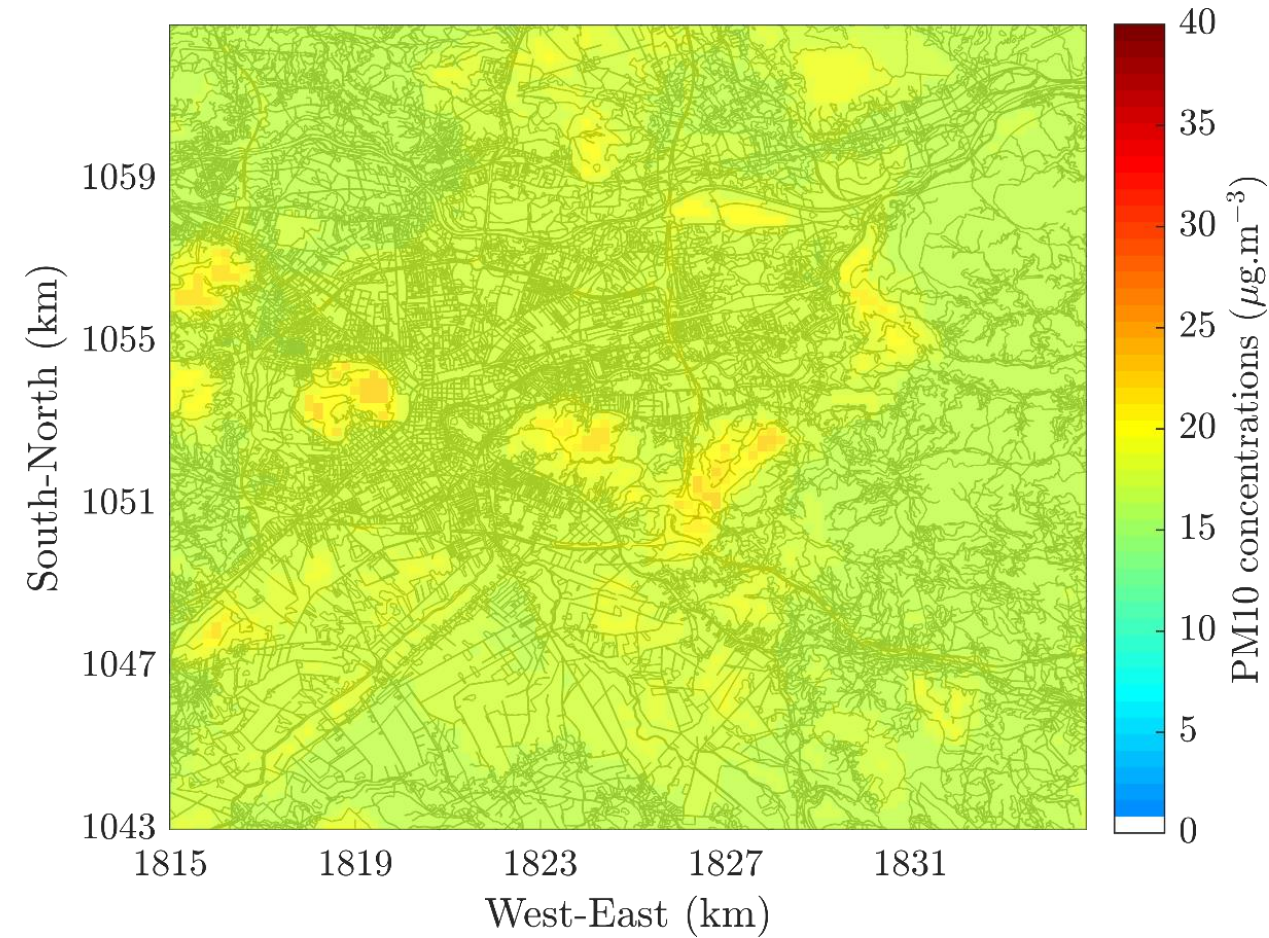


Industrial



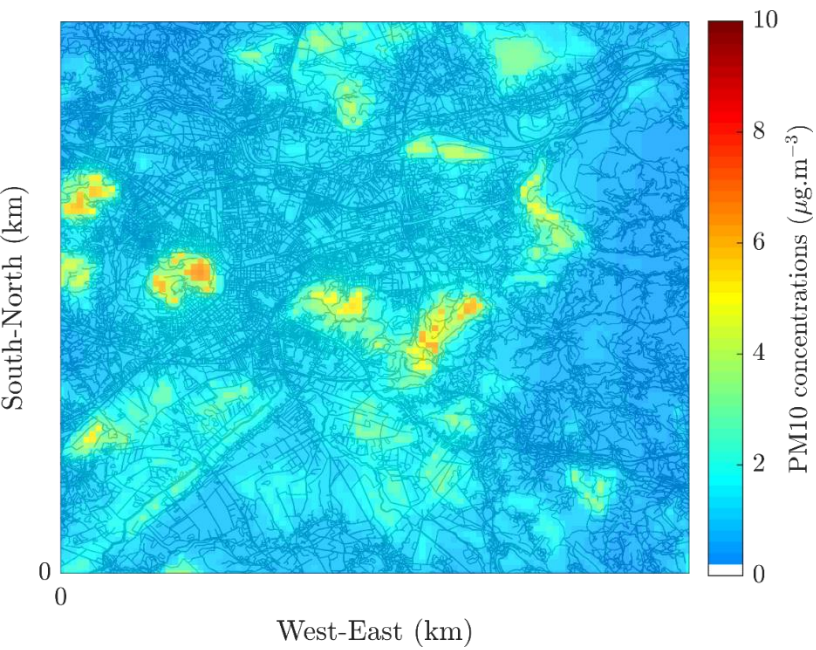
PM10

Total concentrations

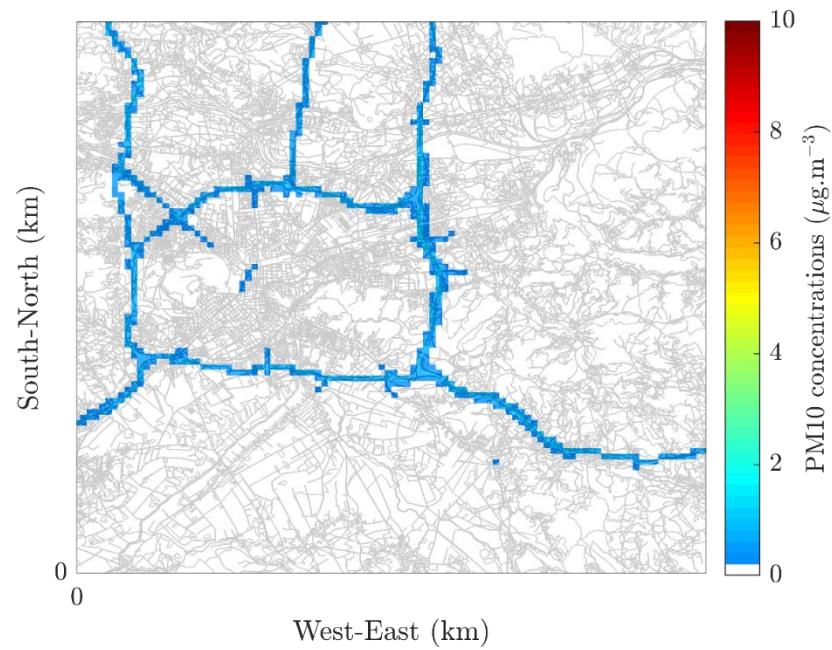


Concentrations by sector

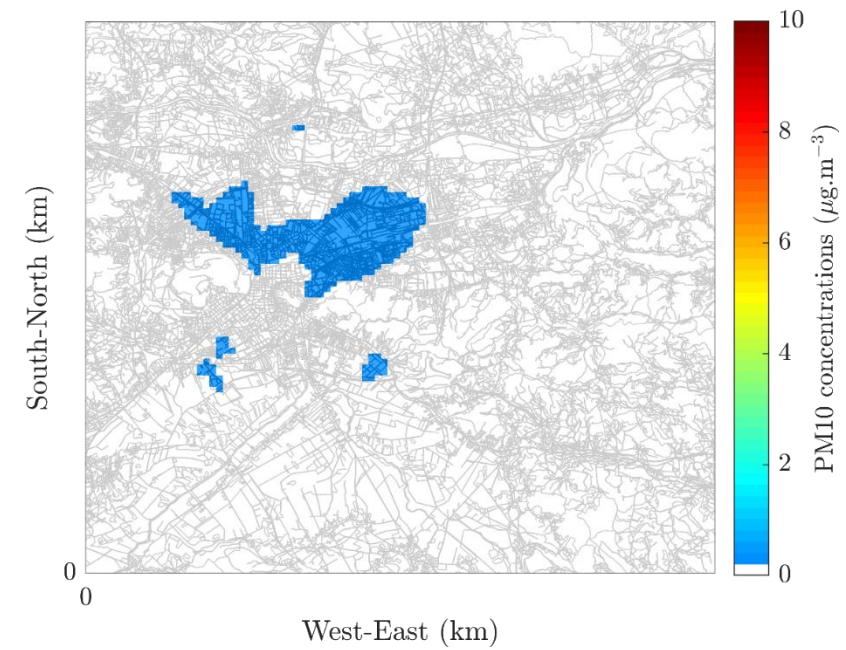
IRCI



Transport



Industrial



Contribution by sector for the whole domain

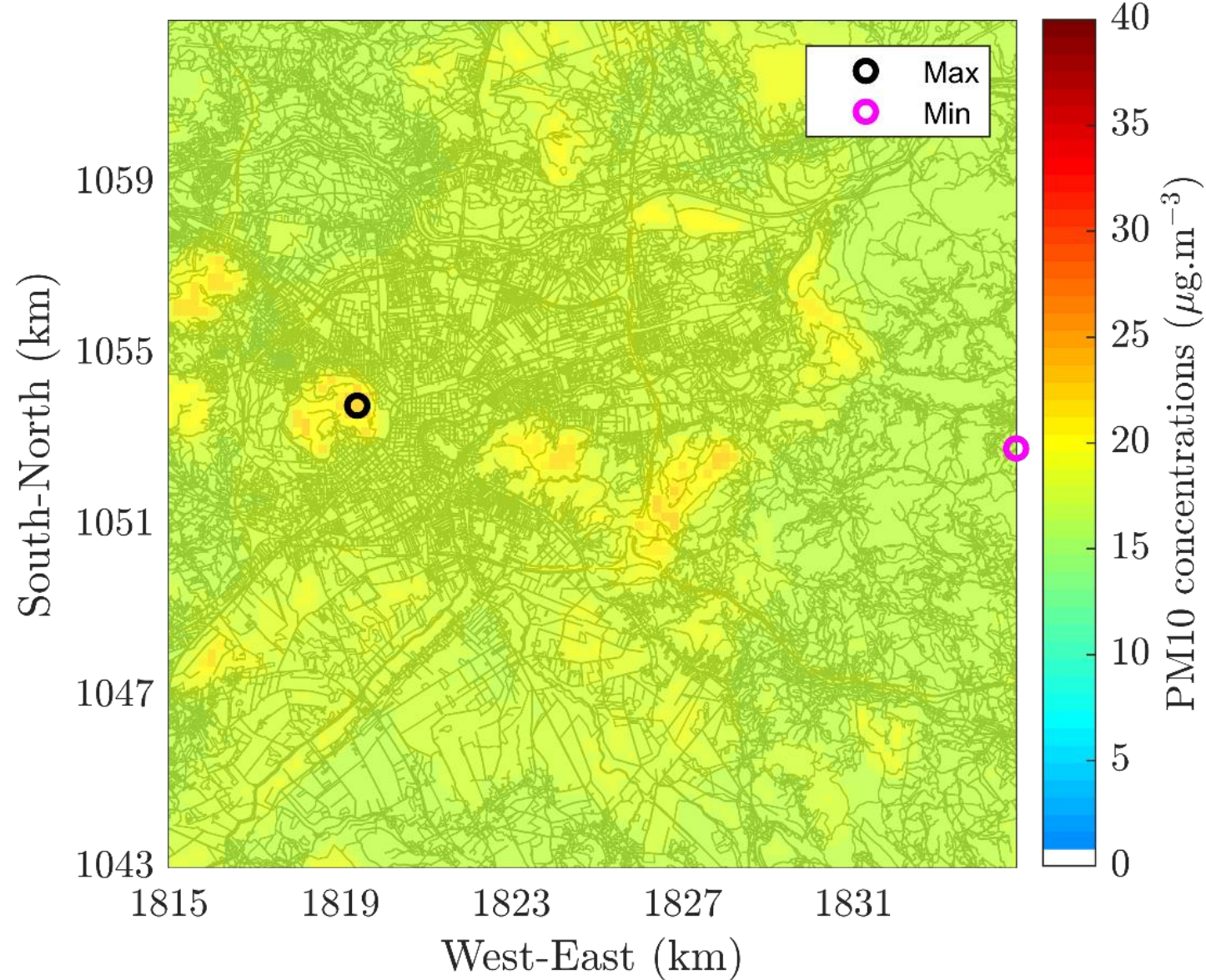
Sector	Original Approach (%)
Transport	6.0
Industrial	5.7
Residential and commercial	88.3
Total	100

Maximum, minimum and mean

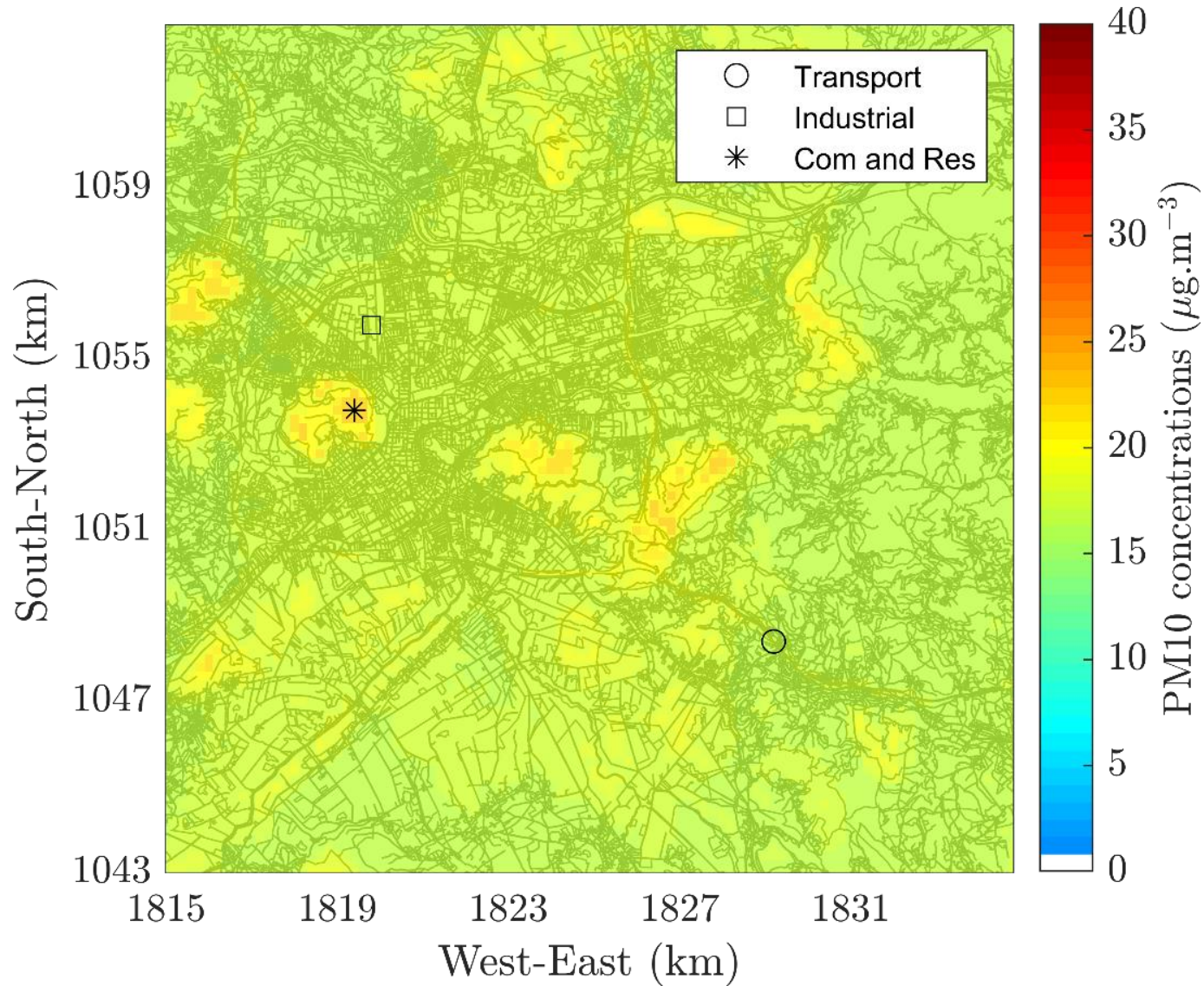
	With adjustment
MAX	22.7
MIN	16.4
MEAN	17.4

Contribution by sector for the cell with the maximum

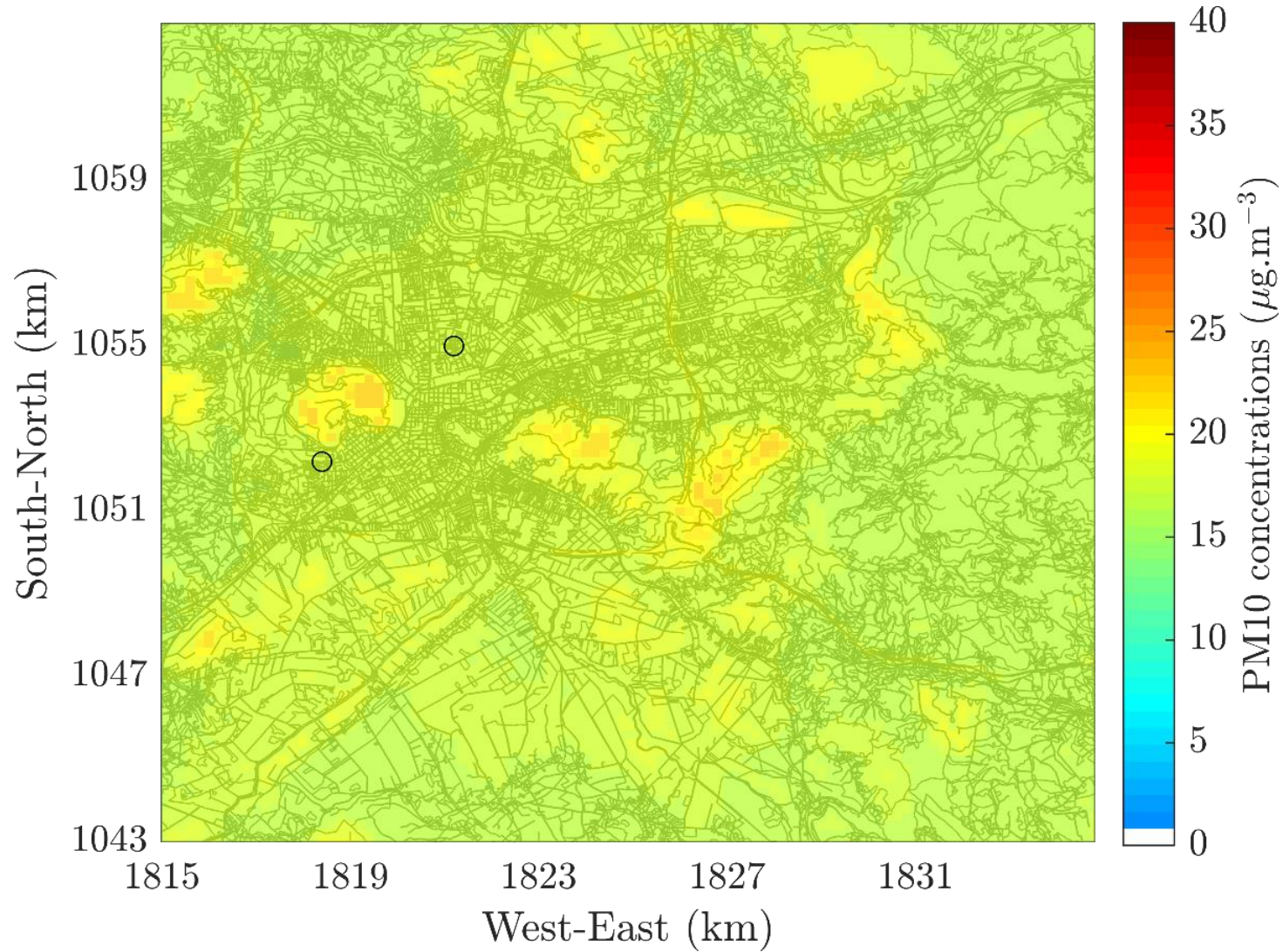
Sector	Contribution by sector for the cell with max value (%)
	Max
Transport	1.2
Industrial	2.3
Commercial and residential	96.5



Location of the maximum value by sector



AQS locations

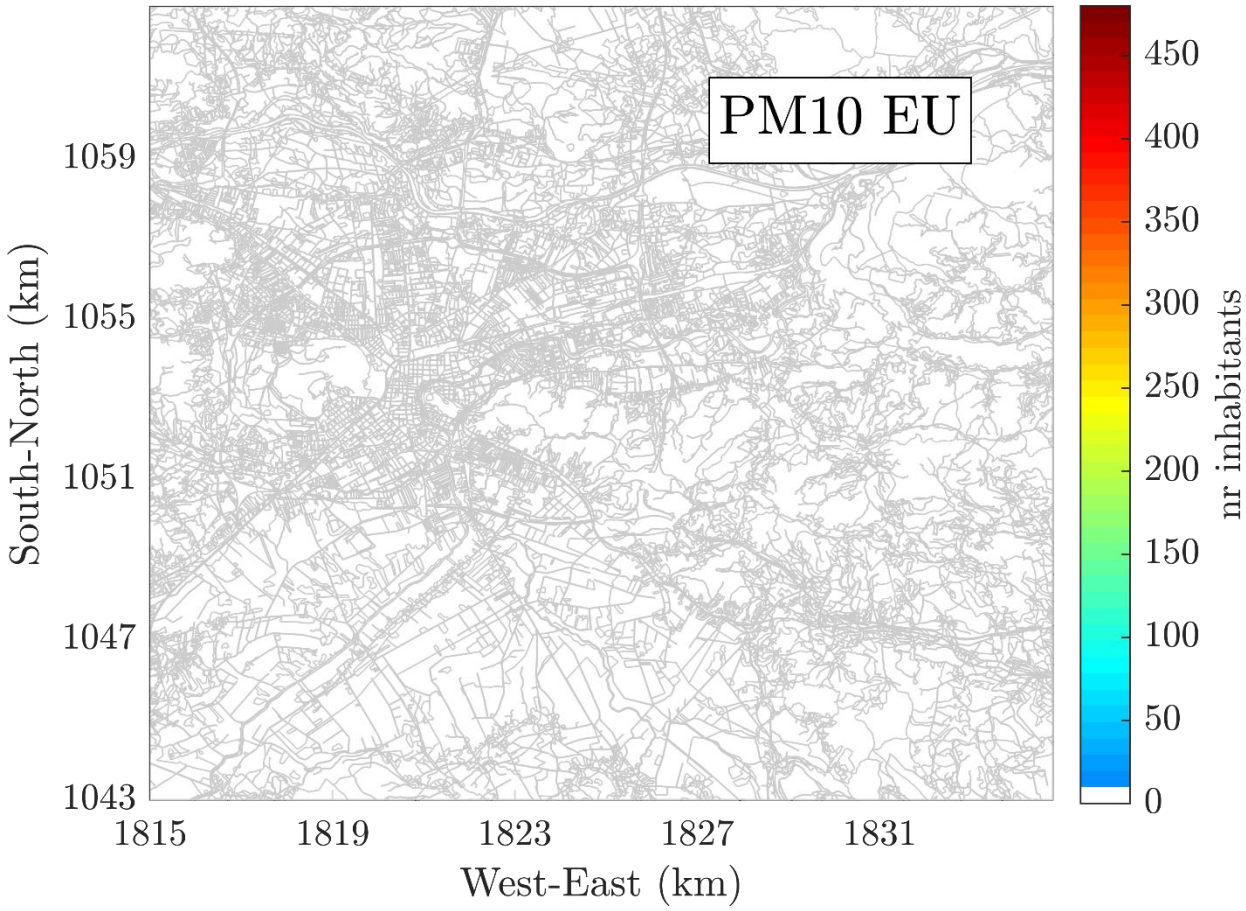


Simulated without adjustment AQS values comparison

Station		AQS Values	Simulated Values	Contribution by sector for the corresponding cell (%)		
Station	Station_type	Measured value	With Adjustment	Transport sector	Industrial sector	Com. and Res. Sector
SI0003A	Urban background	27.9	17.3	5.9	15.1	79.0
SI0058A	Urban background	27.4	17.6	4.5	6.7	88.9

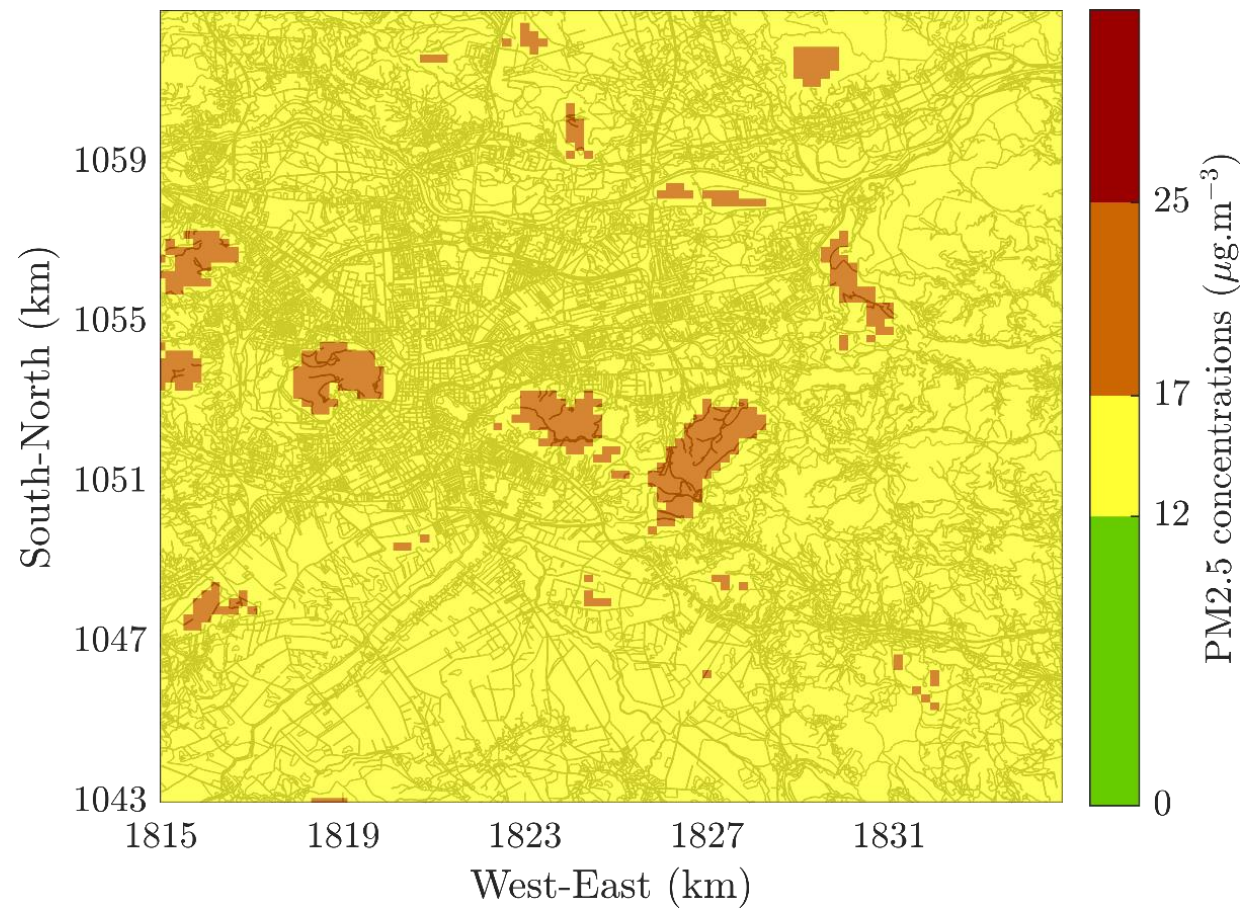
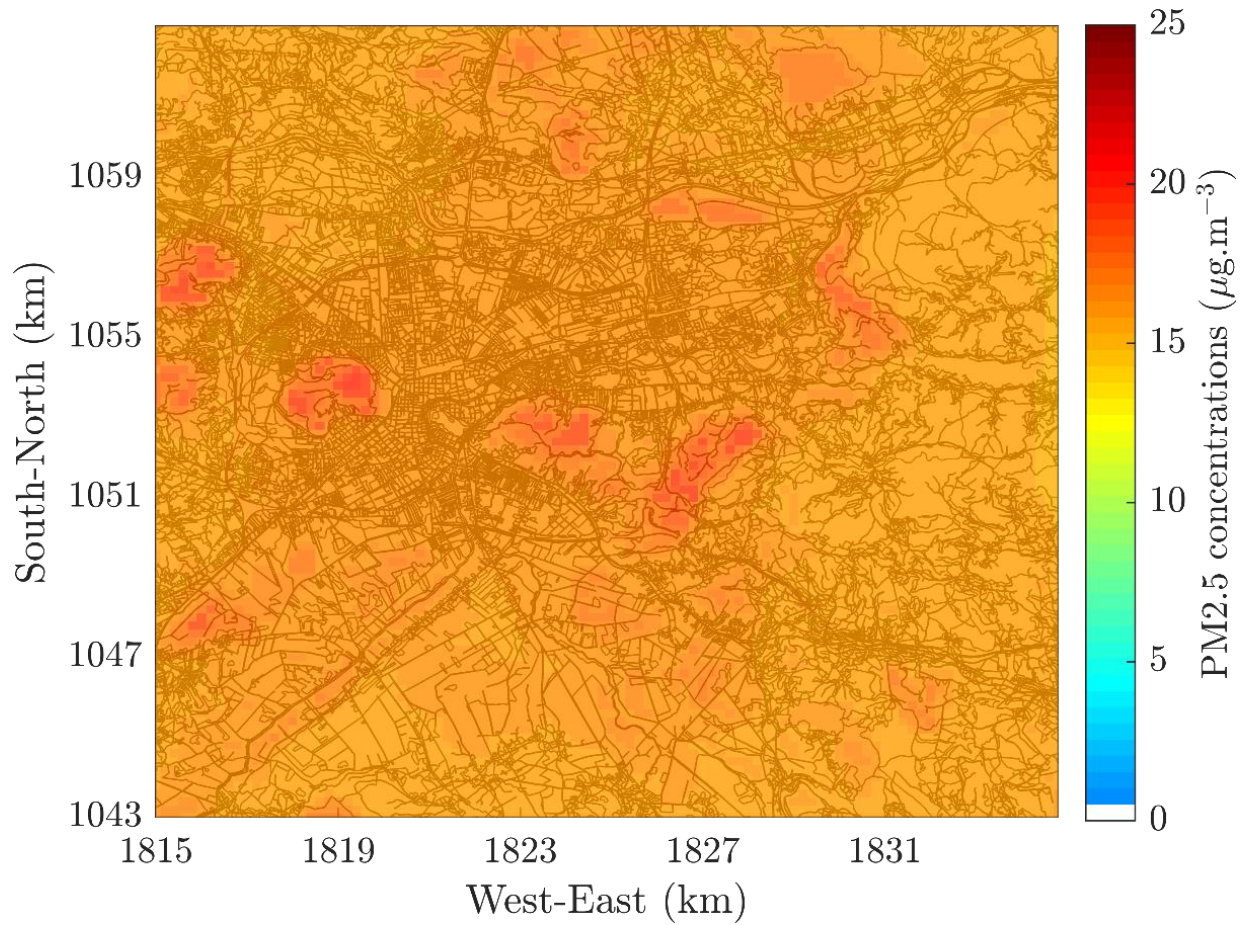
Factor applied over the whole domain: 0.65

Population exposed to values above EU limits and WHO guidelines

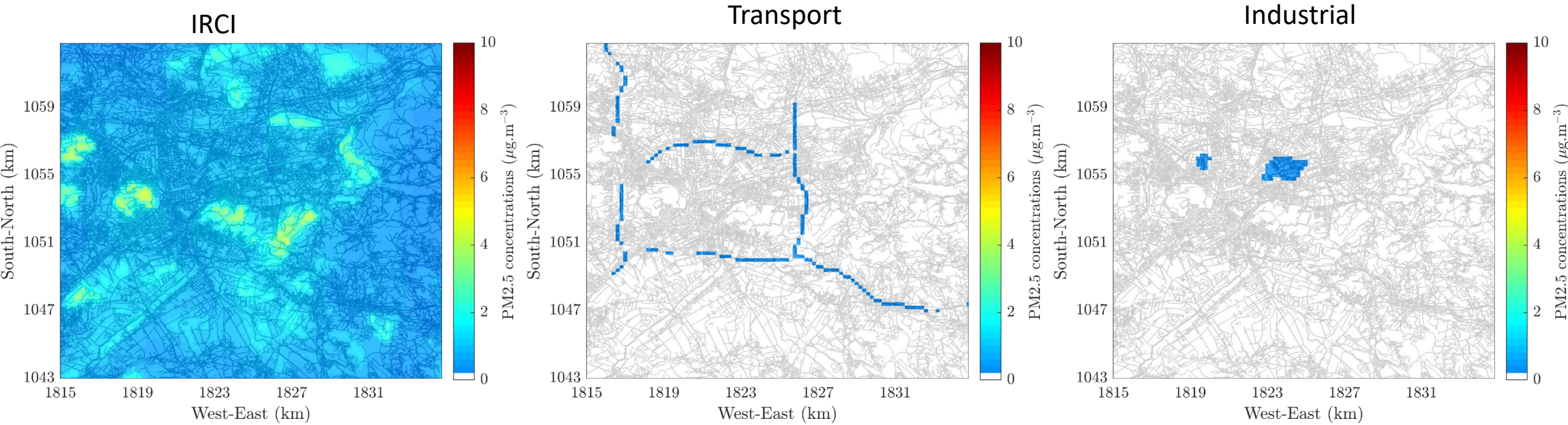


PM2.5

Total concentrations



Concentrations by sector



Contribution by sector for the whole domain

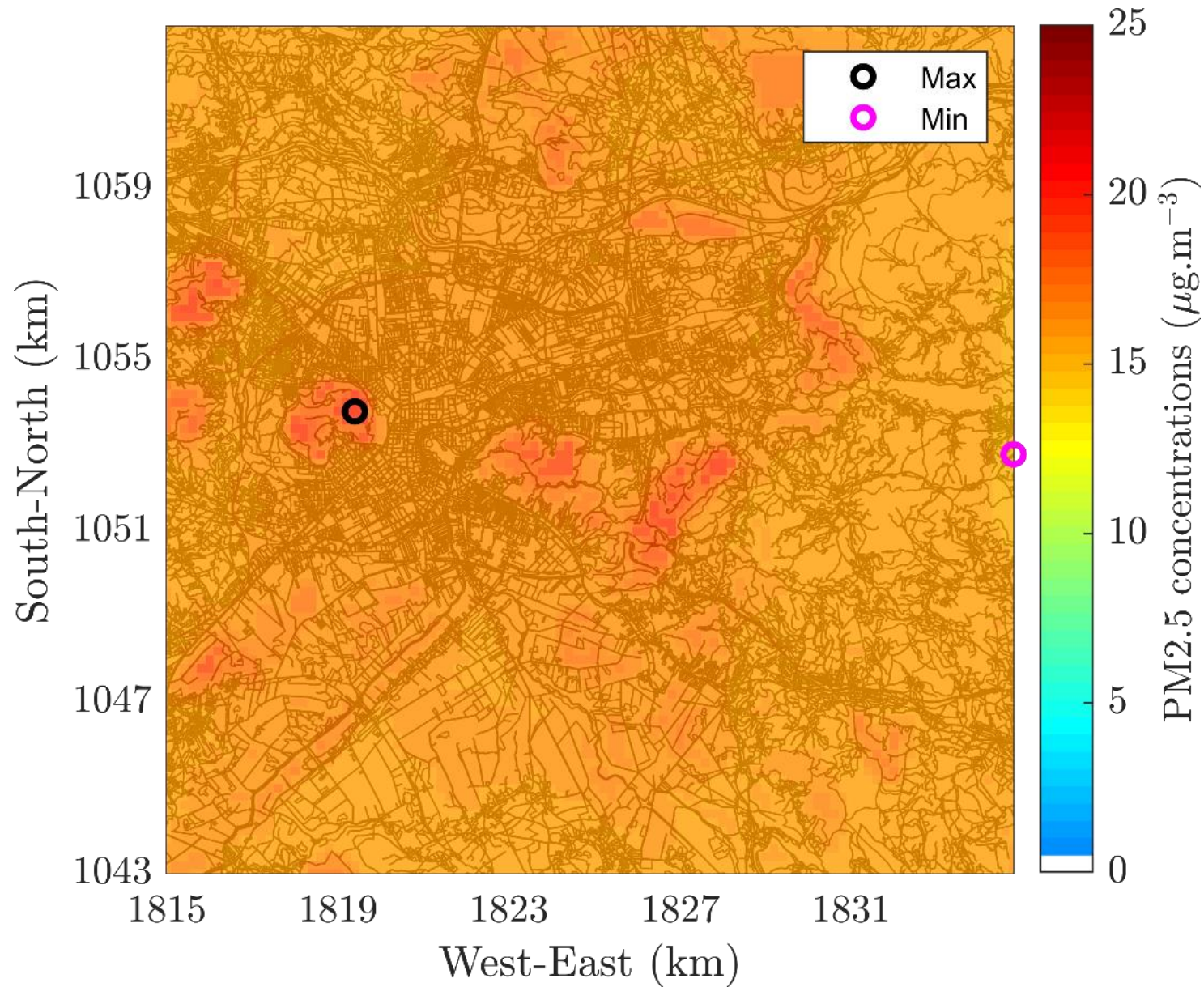
Sector	Original Approach (%)
Transport	3.1
Industrial	5.9
Residential and commercial	91.0
Total	100

Maximum, minimum and mean

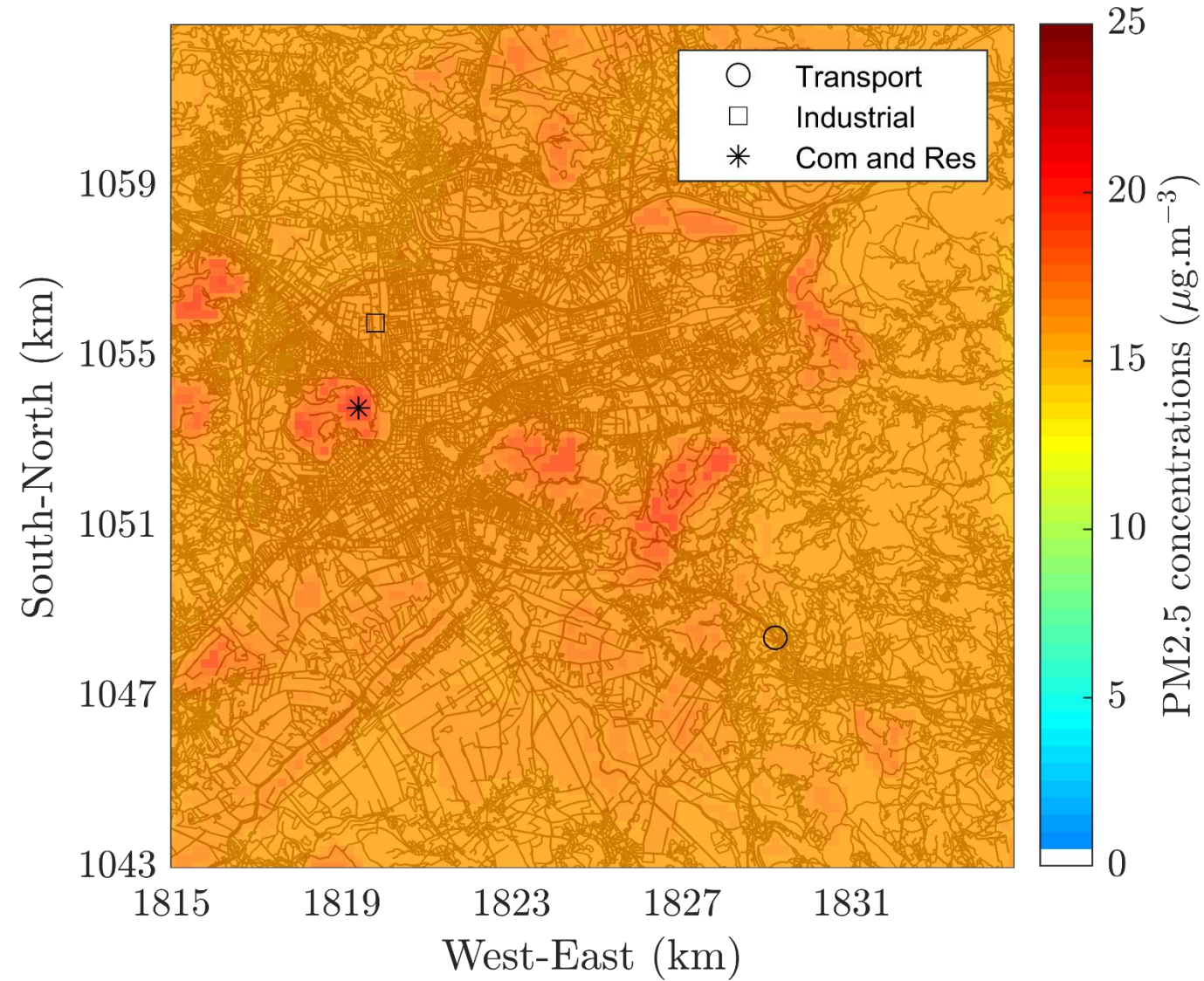
	With adjustment
MAX	19.5
MIN	15.3
MEAN	15.9

Contribution by sector for the cell with the maximum

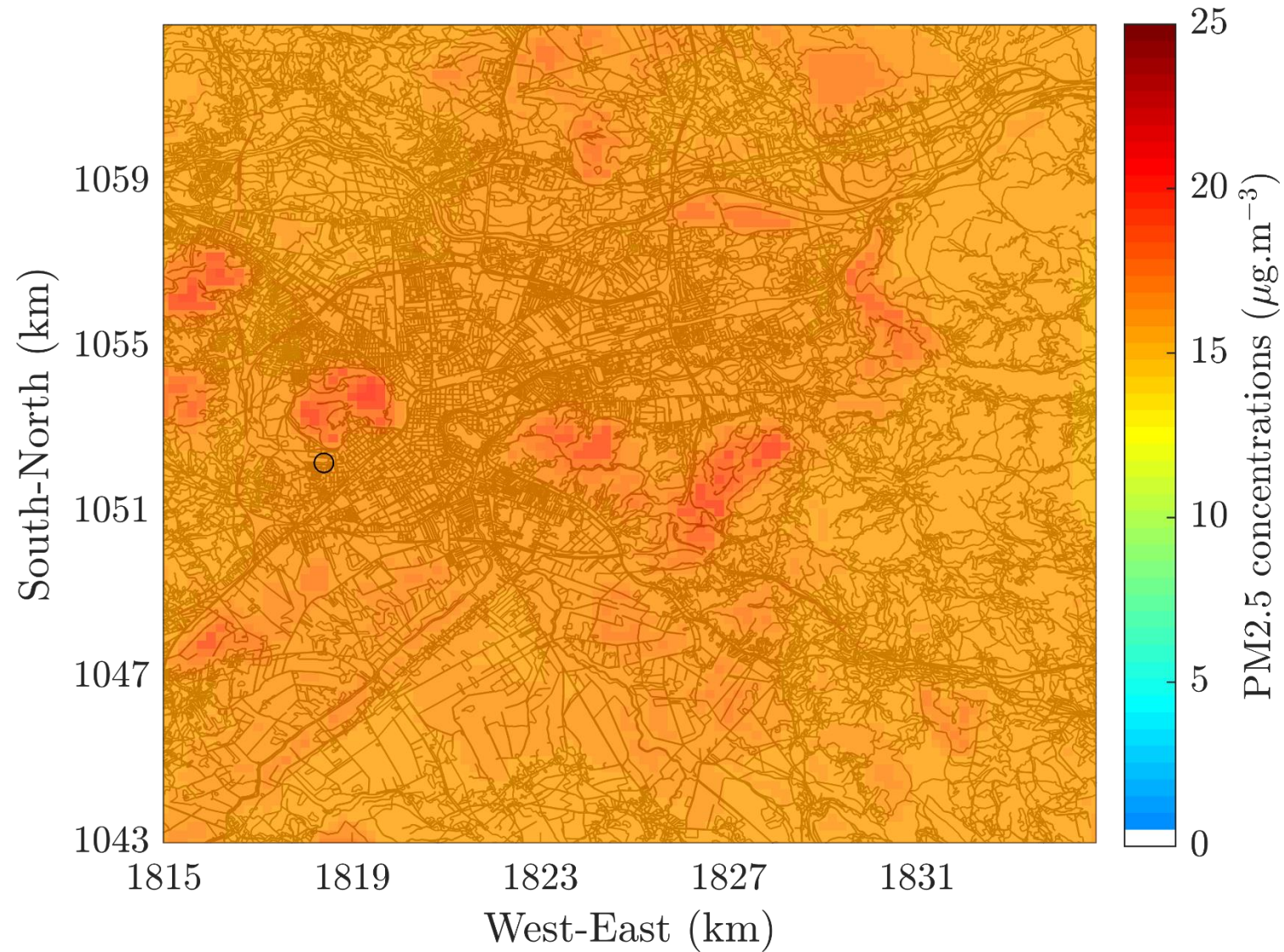
Sector	Contribution by sector for the cell with max value (%)
	Max
Transport	0.6
Industrial	2.3
Commercial and residential	97.1



Location of the maximum value by sector



AQS locations



Simulated without adjustment AQS values comparison

Station		AQS Values	Simulated Values	Contribution by sector for the corresponding cell (%)		
Station	Station_type	Measured value	With Adjustment	Transport sector	Industrial sector	Com. and Res. Sector
SI0058A	Urban background	22.6	16.1	2.3	6.8	90.9

Factor applied over the whole domain: 0.43

Population exposed to values above EU limits and WHO guidelines

