

Global Researcher Attitudes to Societal Impact: SDG9: INDUSTRY, INNOVATION AND INFRASTRUCTURE

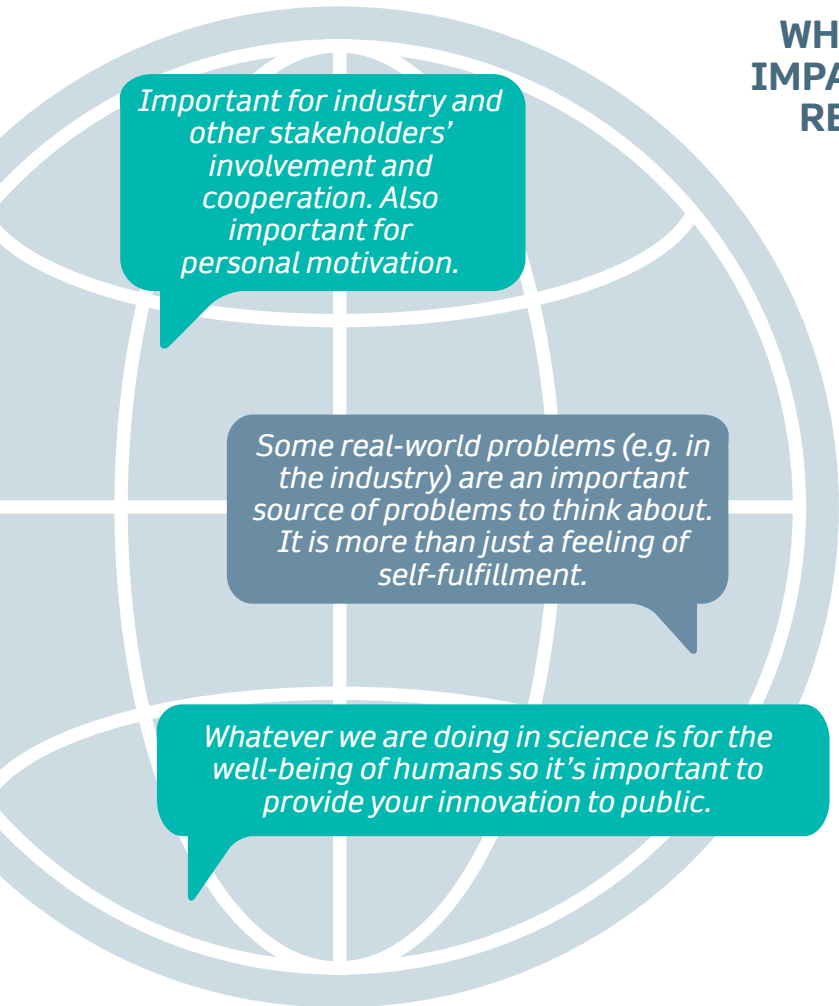


These findings are part of a **GLOBAL SURVEY** of more than **9,000** researchers. Over **1000** researchers identified SDG9 as one of the Sustainable Development Goals (SDGs) related to their research.

Researchers who identified **INDUSTRY, INNOVATION AND INFRASTRUCTURE** as relevant to their research most often said that **GOOD HEALTH AND WELL-BEING (37%)** and **QUALITY EDUCATION (36%)** were related to their work as well.

THE IMPORTANCE OF SOCIETAL IMPACT TO RESEARCHERS

72% of researchers who identify SDG9 as related to their research describe **societal impact** as either **extremely or very important**.

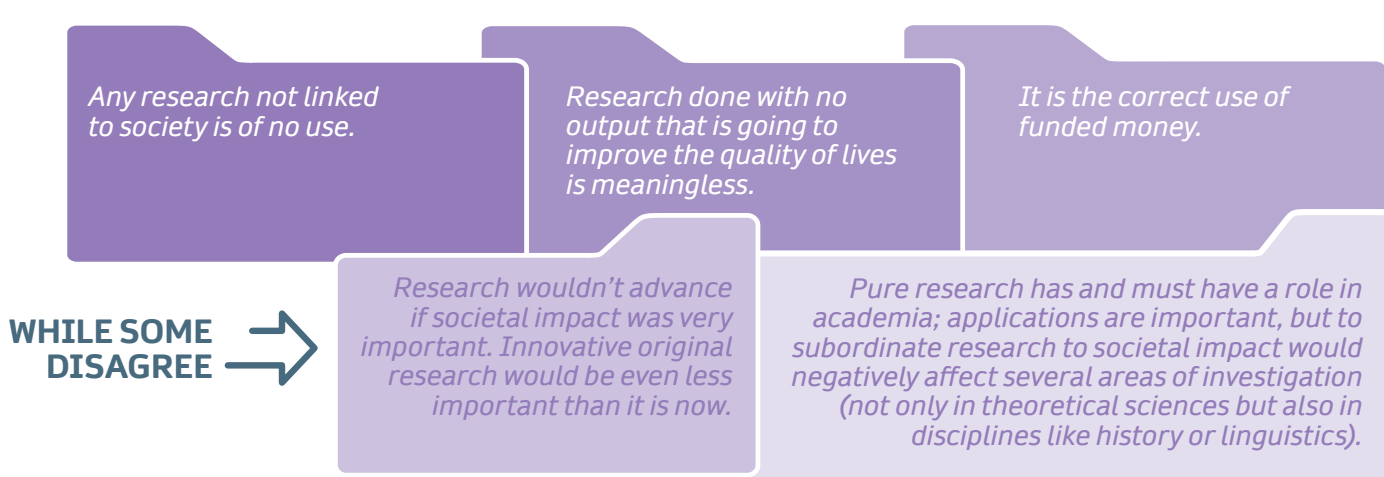
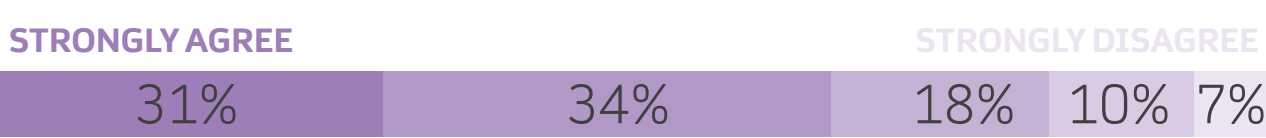


WHICH OF THE FOLLOWING TYPES OF IMPACT DO YOU HOPE THAT YOUR MOST RECENT PUBLICATION WILL HAVE?



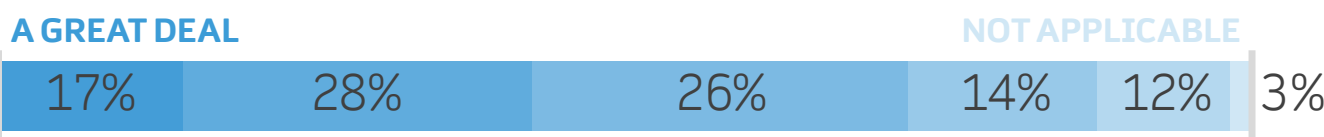
THE FUTURE OF RESEARCH FUNDING

The majority of researchers believe that the funding of research should be more strongly linked to demonstrable societal impact.

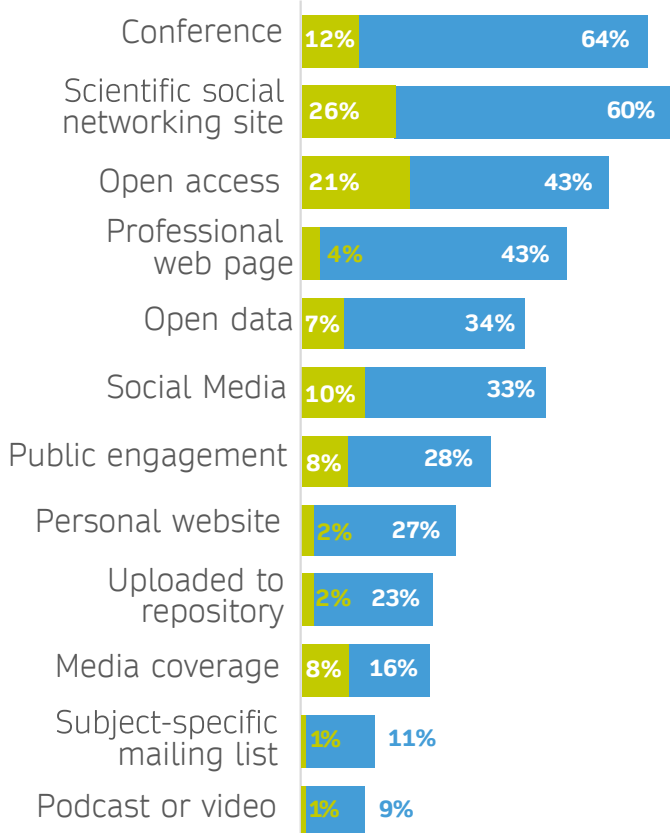


COMMUNICATING RESEARCH

45% of researchers say their choice of journal was influenced 'a great deal' or 'a lot' by the intended societal impact of their research.



Presenting at a conference is the most popular way SDG9 researchers increase their societal impact.



But more researchers consider **scientific social networking sites and open access to have the greatest impact.**

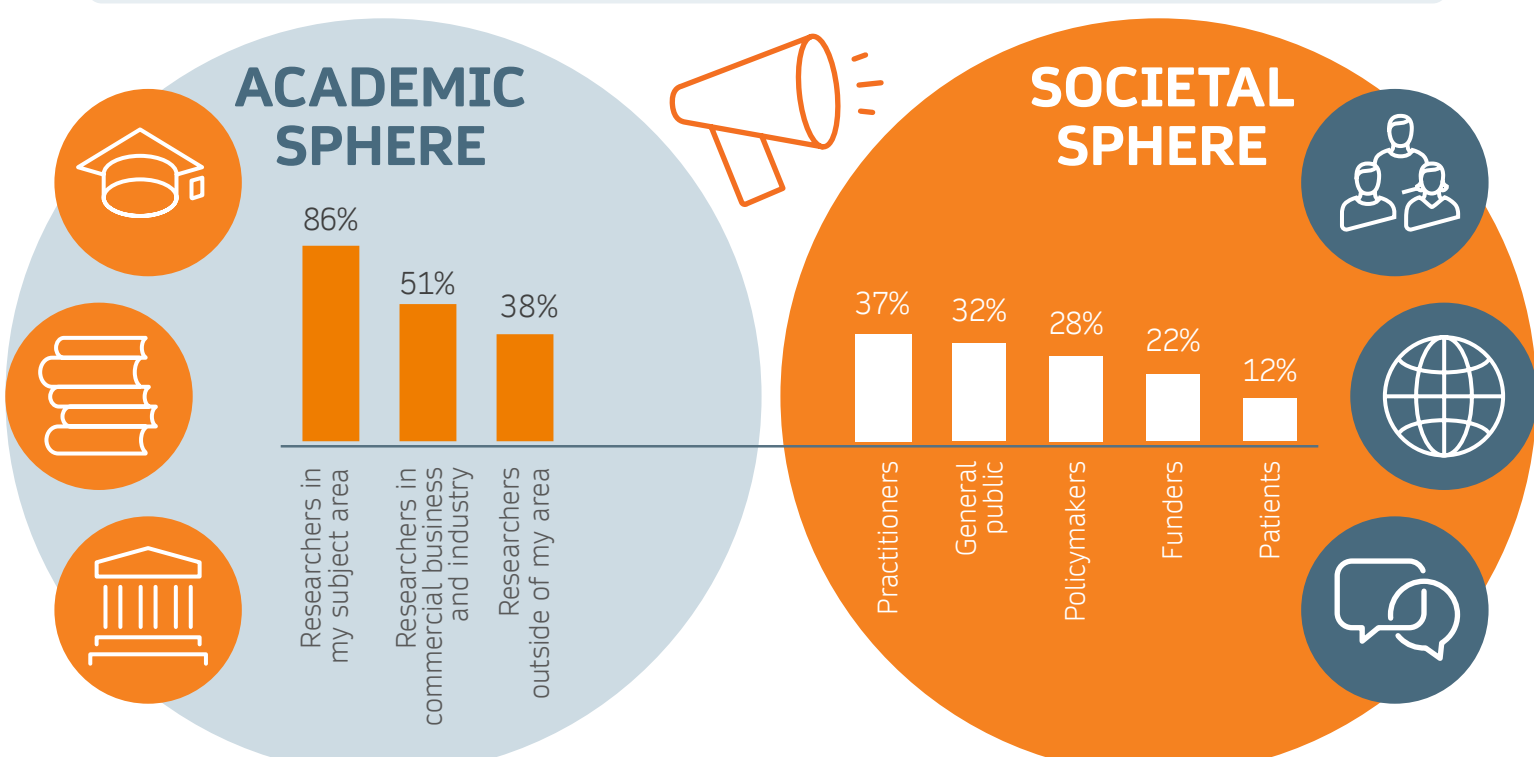
If the article is hidden behind a paywall it makes it difficult for the public to access it, therefore it limits its potential uptake by industry/government etc. across the world.

I think that scientific social networking sites are a global place where all researchers and industry leaders are present and can discover my work and interact with me.

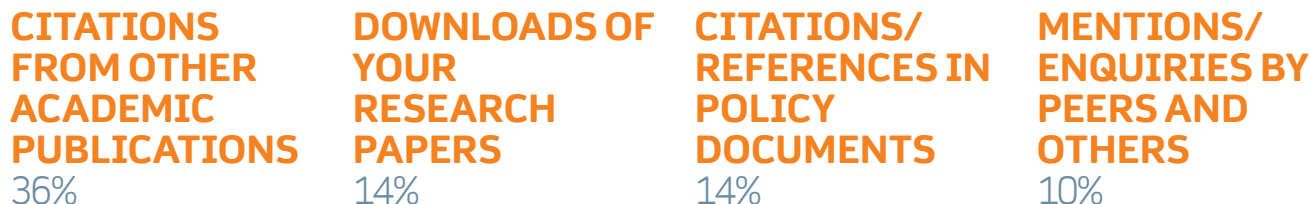
MEASURING ACADEMIC VS. SOCIETAL IMPACT

An overwhelming majority of researchers track the societal impact of their research to some extent, but there is limited tracking of impact outside of academic research.

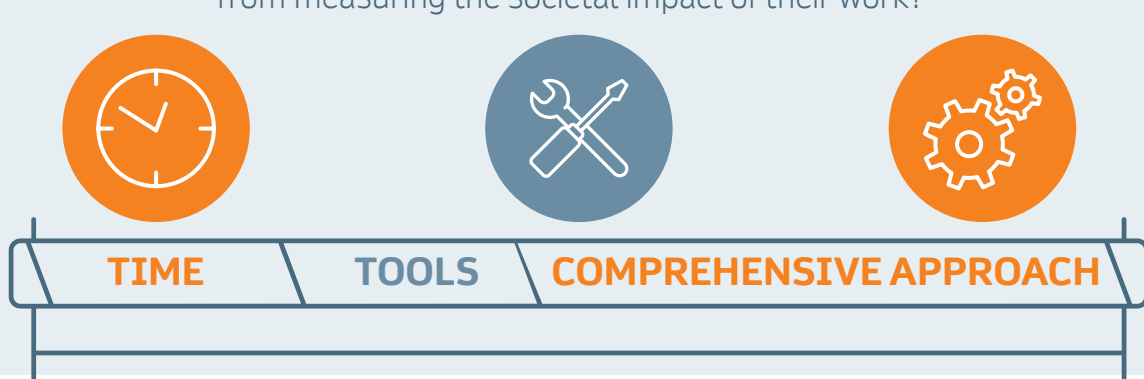
Q Which of the following audiences were you trying to reach with your most recent publication?



Q Which **one** method do you think is the best for tracking the societal impact of your research?



What are the **biggest roadblocks** stopping researchers from measuring the societal impact of their work?



To learn more about our new strategic partnership to accelerate progress on global societal challenges through open research, visit: springernature.com/SDGimpact

