



UNSERA
UNIVERSITAS SERANG RAYA

Manajemen Publikasi OJS 3

Supriyadi

Kabag Penelitian Universitas Serang Raya

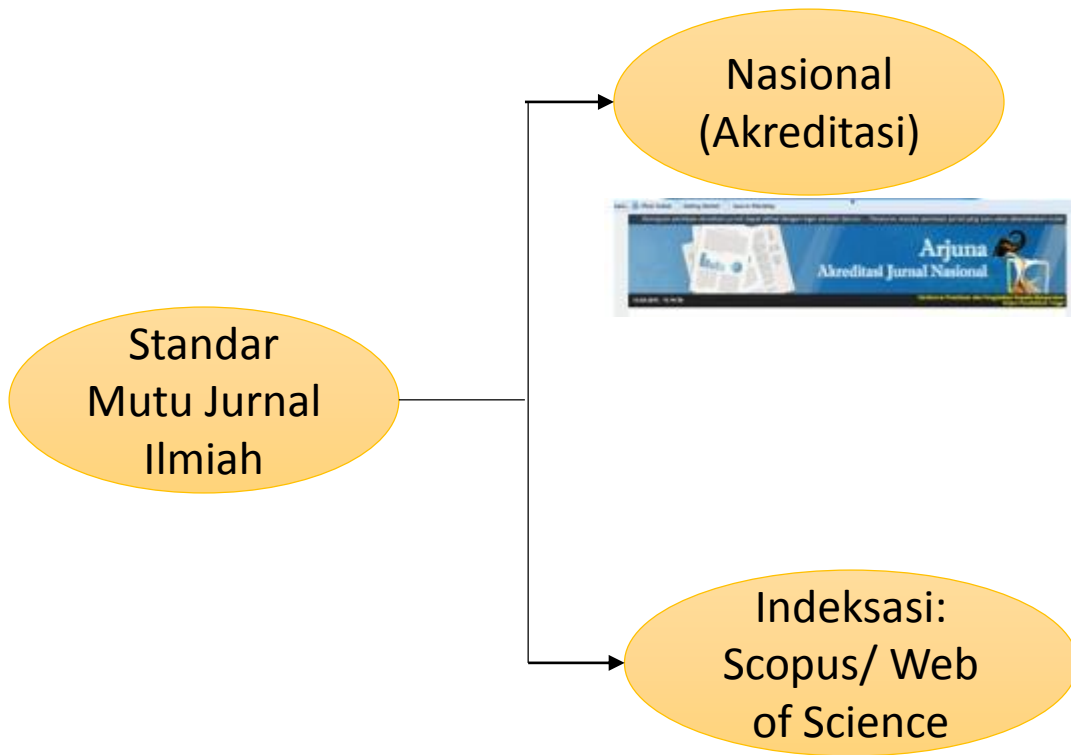
<https://e-jurnal.lppmunsera.org/index.php/JSMI>

Lembaga Penelitian dan Pengabdian Kepada Masyarakat (LPPM)

Jalan Raya Serang – Cilegon KM. 5 Taman Drangong Serang – Banten

Telp.: (0254) 8235007, Fax. : 8235008

e-mail : lppm@unsera.ac.id website : <http://lppm.unsera.ac.id>



Bagian	Unsur Penilaian	Skor/ Bobot
A	PENAMAAN TERBITAN BERKALA ILMIAH	3
B	KELEMBAGAAN PENERBIT	4
C	PENYUNTINGAN DAN MANAJEMEN PENGELOLAAN TERBITAN	17
D	SUBSTANSI ARTIKEL	39
E	GAYA PENULISAN	12
F	PENAMPILAN	8
G	KEBERKALAAN	6
H	PENYEBARLUASAN	11
	JUMLAH	100

Minimum criteria	Journal policy	Quality of content	Journal standing	Regularity	Online availability
<ul style="list-style-type: none"> Peer-review English abstracts Regular publication References in Roman script Publication ethics statement 	<ul style="list-style-type: none"> Convincing editorial concept/policy Level of peer-review Diversity in geographic distribution of editors Diversity in geographic distribution of authors 	<ul style="list-style-type: none"> Academic contribution to the field Clarity of abstracts Quality and conformity with stated aims & scope Readability of articles 	<ul style="list-style-type: none"> Citedness of journal articles in Scopus Editor standing 	<ul style="list-style-type: none"> No delay in publication schedule 	<ul style="list-style-type: none"> Content available online English-language journal home page Quality of home page

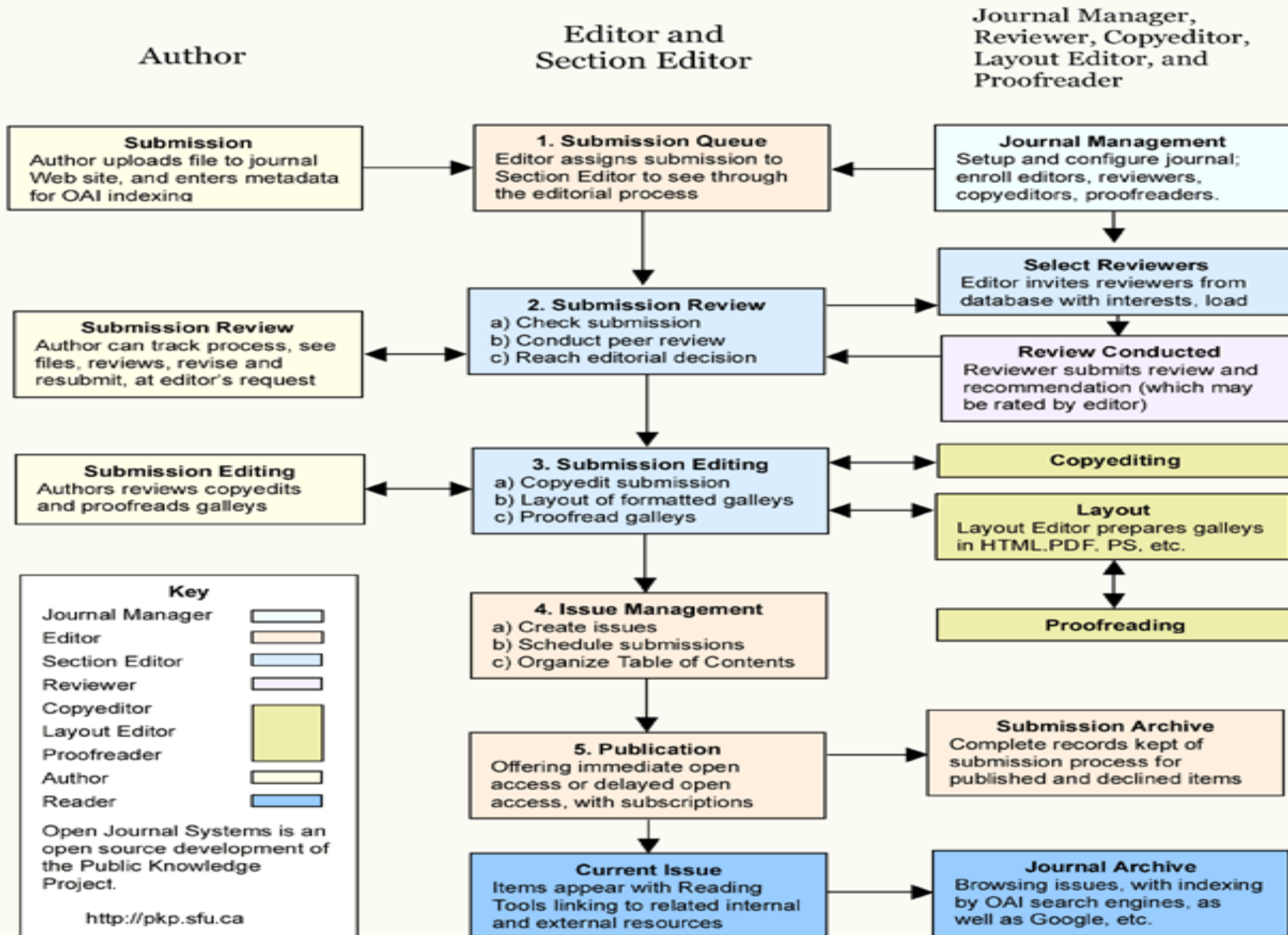
Lembaga Penelitian dan Pengabdian Kepada Masyarakat (LPPM)



6	Manajemen jurnal ilmiah	a	Menggunakan manajemen penyuntingan sepenuhnya secara daring	3
		b	Menggunakan manajemen penyuntingan secara kombinasi antara daring dan surel	2
		c	Menggunakan manajemen penyuntingan melalui surel saja	1



OJS Editorial and Publishing Process





Author

1. Pelajari kemungkinan peluang untuk diterima
2. Mempersiapkan artikel sesuai dengan template jurnal yang dituju
3. Mohon didampingi jika artikel disubmit oleh mahasiswanya
4. Jangan mengirimkan satu artikel lebih dari satu jurnal
5. Sabar dalam mengikuti proses peer review dalam jurnal



Author Pelajari kemungkinan peluang untuk diterima

<http://sinta.ristekbrin.go.id/journals>

<https://journalfinder.elsevier.com/>

Submissions

- Online Submissions
- Author Guidelines
- Copyright Notice
- Privacy Statement

Other

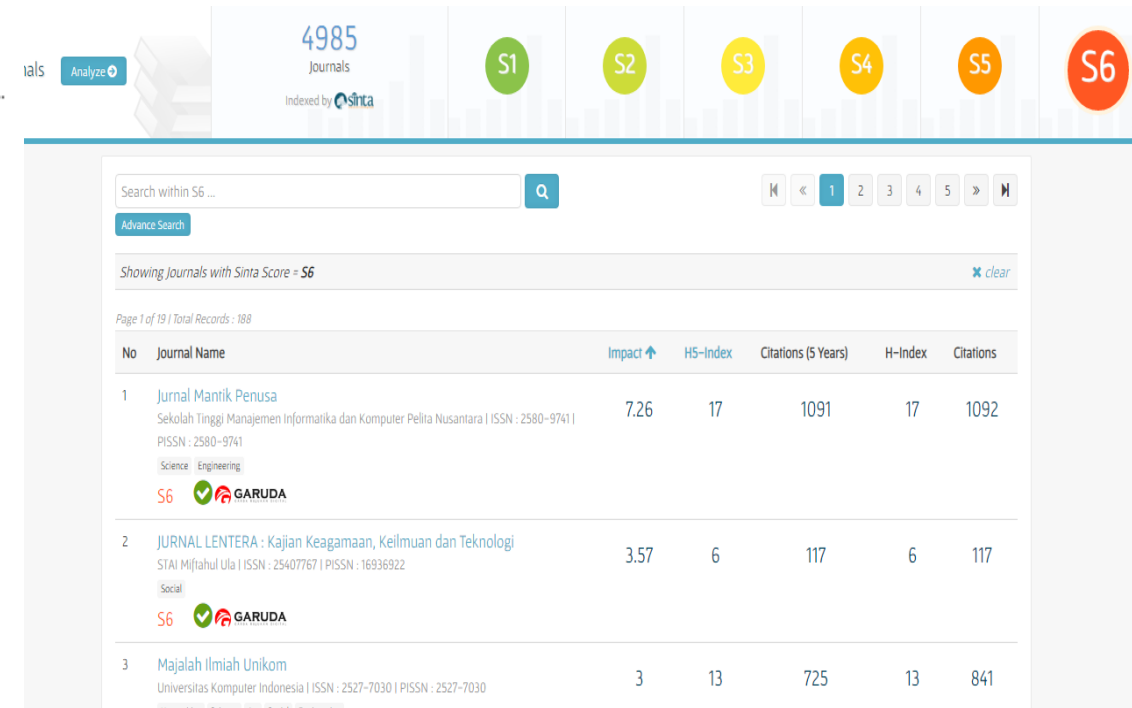
- Journal Sponsorship
- Journal History
- Site Map
- About this Publishing System
- Statistics

Home > About the Journal > **Statistics**

Statistics

Year << 2019 >>

Total submissions	106
Accept	22 (24%)
Decline	68 (76%)
Days to review	55



Lembaga Penelitian dan Pengabdian Kepada Masyarakat (LPPM)

Jalan Raya Serang – Cilegon KM. 5 Taman Drangong Serang – Banten
Telp.: (0254) 8235007, Fax. : 8235008
e-mail : lppm@unsera.ac.id website : <http://lppm.unsera.ac.id>



Trends

 2020-01-01 — 2020-06-15

Name	Total Within Date Range	Total
Submissions Received	12	84
Submissions Accepted	7	69
Submissions Declined	1	10
Submissions Declined (Desk Reject)	0	0
Submissions Declined (Post-Review)	1	2
Submissions Declined (Other)	0	8
Submissions Published	7	69
Average Days to First Editorial Decision	97	16
Average # Days to Accept	102	14
Average # Days to Reject	134	84
Acceptance Rate	50.00%	82.14%
Rejection Rate	8.33%	11.90%

Lembaga Penelitian dan Pengabdian Kepada Masyarakat (LPPM)

Jalan Raya Serang – Cilegon KM. 5 Taman Drangong Serang – Banten

Telp.: (0254) 8235007, Fax. : 8235008

e-mail : lppm@unsera.ac.id website : <http://lppm.unsera.ac.id>



Name	Total Within Date Range	Total
Submissions Received	27	118
Submissions Accepted	1	43
Submissions Declined	18	61
Submissions Declined (Desk Reject)	5	5
Submissions Declined (Post-Review)	13	27
Submissions Declined (Other)	0	29
Submissions Published	0	42
Average Days to First Editorial Decision	37	37
Average # Days to Accept	91	72
Average # Days to Reject	36	57
Acceptance Rate	3.70%	36.44%
Rejection Rate	66.67%	51.69%
Desk Reject Rate	18.52%	4.24%
Post-Review Reject Rate	33.33%	22.88%
Other Reject Rate	0.00%	24.58%

Lembaga Penentuan dan Pengabdian kepada Masyarakat (LPPM)

Jalan Raya Serang – Cilegon KM. 5 Taman Drangong Serang – Banten

Telp.: (0254) 8235007, Fax. : 8235008

e-mail : lppm@unsera.ac.id website : <http://lppm.unsera.ac.id>



Author Mempersiapkan artikel sesuai dengan template jurnal yang dituju

TEMPLATE



Article
template

Template Jurnal

- Template penulisan jurnal J@ti Undip: Jurnal Teknik Industri versi PDF
- Template penulisan jurnal J@ti Undip: Jurnal Teknik Industri versi Word

Lembaga Penelitian dan Pengabdian Kepada Masyarakat (LPPM)

Jalan Raya Serang – Cilegon KM. 5 Taman Drangong Serang – Banten

Telp.: (0254) 8235007, Fax. : 8235008

e-mail : lppm@unsera.ac.id website : <http://lppm.unsera.ac.id>



UNSERA
UNIVERSITAS SERANG RAYA

Author proses register di jurnal beberapa jurnal ada yang email aktif/spam/tidak

Register

Profile

Given Name *

trial

Family Name

trial

Affiliation *

universitas serang raya

Country *

Indonesia ▼

Login

Email *

email@gmail.com

Username *

trial

Password *

Repeat password *

Yes, I agree to have my data collected and stored according to the [privacy statement](#).

Yes, I would like to be notified of new publications and announcements.



I'm not a robot



reCAPTCHA
Privacy - Terms

Lembaga Penelitian dan Pengabdian Kepada Masyarakat (LPPM)

Jalan Raya Serang – Cilegon KM. 5 Taman Drangong Serang – Banten

Telp.: (0254) 8235007, Fax. : 8235008

e-mail : lppm@unsera.ac.id website : <http://lppm.unsera.ac.id>



Author

Klik make submission dan pastikan sampai step 5

Registration complete

Thanks for registering! What would you like to do next?

- [Make a New Submission](#)
- [Edit My Profile](#)
- [Continue Browsing](#)

Submit an Article

1. Start
2. Upload Submission
3. Enter Metadata
4. Confirmation
5. Next Steps

Submission Requirements

You must read and acknowledge that you've completed the requirements below before proceeding.

- The submission has not been previously published, nor is it before another journal for consideration (or an explanation has been provided)
-

This field is required.

The submission file is in OpenOffice, Microsoft Word, RTF, or WordPerfect document file format.

- Where available, URLs for the references have been provided.
- The text is single-spaced; uses a 12-point font; employs italics, rather than underlining (except with URL addresses); and all illustrations, figures, and tables are placed at the beginning of the article, rather than at the end.
- The text adheres to the stylistic and bibliographic requirements outlined in the [Author Guidelines](#), which is found in About the Journal.
- If submitting to a peer-reviewed section of the journal, the instructions in [Ensuring a Blind Review](#) have been followed.

Lembaga Penelitian dan Pengabdian Kepada Masyarakat (LPPM)

Jalan Raya Serang – Cilegon KM. 5 Taman Drangong Serang – Banten

Telp.: (0254) 8235007, Fax. : 8235008

e-mail : lppm@unsera.ac.id website : <http://lppm.unsera.ac.id>



Author

Klik make submission dan pastikan sampai step 5

Submissions

My Assigned

[New Submission](#)

2319 trial trial latihan

Submission



Lembaga Penelitian dan Pengabdian Kepada Masyarakat (LPPM)

Jalan Raya Serang – Cilegon KM. 5 Taman Drangong Serang – Banten

Telp.: (0254) 8235007, Fax. : 8235008

e-mail : lppm@unsera.ac.id website : <http://lppm.unsera.ac.id>



UNSERA
UNIVERSITAS SERANG RAYA

Submission

Editor in Chief assign Section Editor
Section Editor communicate Author
Section Editor send to review

Lembaga Penelitian dan Pengabdian Kepada Masyarakat (LPPM)

Jalan Raya Serang – Cilegon KM. 5 Taman Drangong Serang – Banten

Telp.: (0254) 8235007, Fax. : 8235008

e-mail : lppm@unsera.ac.id website : <http://lppm.unsera.ac.id>



Submission

Editor in Chief

Submissions

Issues

Settings

Users & Roles

All Active		<input type="text" value="Search"/>	Filters	New Submission
2319	trial trial latihan		Submission	▼

1 of 1 submissions

Lembaga Penelitian dan Pengabdian Kepada Masyarakat (LPPM)

Jalan Raya Serang – Cilegon KM. 5 Taman Drangong Serang – Banten

Telp.: (0254) 8235007, Fax. : 8235008

e-mail : lppm@unsera.ac.id website : http://lppm.unsera.ac.id



Editor in Chief

Mengirimkan ke section editor atau bisa langsung di decline jika tidak sesuai dengan yang telah ditetapkan

Jika sesuai maka akan dikirimkan ke section editor untuk proses selanjutnya

latihan

trial trial

Submission

Review

Copyediting

Production

Help

Submission Files

Search

Upload File

7032-1 trial, Reviewer A.docx

June 17,
2020

Article Text

Download All Files

Send to Review

Accept and Skip Review

Decline Submission

Participants

Assign

Journal editor

supriyadi supriyadi

Author

trial trial

Pre-Review Discussions

Add discussion

Name

From

Last Reply

Replies

Closed

No Items



UNSERA

UNIVERSITAS SERANG RAYA

Editor in Chief

Jika sesuai maka akan dikirimkan ke section editor untuk proses selanjutnya

Kewenangan section editor bisa diatur apakah bisa sampai membuat keputusan atau rekomendasi

Assign Participant

Help

Locate a User

Section editor

Search User By Name

Search

Name
<input type="radio"/> latihan latihan

1 of 1 items

Choose a predefined message to use, or fill out the form below.

Message

B *I* U Upload

EDITOR :

The submission, "latihan," to Repository Universitas Serang Raya has been assigned to you to see through the editorial process in your role as Section Editor.

Submission URL: [URL](#)

Username: [USERNAME](#)

Lembaga Penelitian dan Pengabdian Kepada Masyarakat (LPPM)

Jalan Raya Serang – Cilegon KM. 5 Taman Drangong Serang – Banten

Telp.: (0254) 8235007, Fax. : 8235008

e-mail : lpmm@unsera.ac.id website : <http://lpmm.unsera.ac.id>



Editor in Chief

Jika sesuai maka akan dikirimkan ke section editor untuk proses selaniutnva

Submission Review Copyediting Production [Help](#)

Submission Files

[Search](#) [Upload File](#)

▶ 7032-1 trial, Reviewer A.docx	June 17, 2020	Article Text
----------------------------------	---------------	--------------

[Download All Files](#)

Pre-Review Discussions

[Add discussion](#)

Name	From	Last Reply	Replies	Closed
▶ Editorial Assignment	lppmunsera	-	0	<input type="checkbox"/>
	2020-06-17 12:31 PM			

Send to Review

Accept and Skip Review

Decline Submission

Participants

[Assign](#)

Journal editor

▶ supriyadi supriyadi

Section editor

▶ latihan latihan

Author

▶ trial trial

Lembaga Penelitian dan Pengabdian Kepada Masyarakat (LPPM)

Jalan Raya Serang – Cilegon KM. 5 Taman Drangong Serang – Banten

Telp.: (0254) 8235007, Fax. : 8235008

e-mail : lppm@unsera.ac.id website : http://lppm.unsera.ac.id



Section Editor

Berkomunikasi dengan author jika artikel masih ada kekurangan.
Bisa rekomendasi reject jika memang tidak sesuai menurut section editor

Mengirimkan artikel yang layak ke reviewer

Submissions

My Assigned [Filters](#) [New Submission](#)

2319	trial trial latihan	Submission	1
1	Open discussions		
Last activity recorded on 6/17/2020			
		View Submission	Activity Log & Notes

Lembaga Penelitian dan Pengabdian Kepada Masyarakat (LPPM)

Jalan Raya Serang – Cilegon KM. 5 Taman Drangong Serang – Banten

Telp.: (0254) 8235007, Fax. : 8235008

e-mail : lppm@unsera.ac.id website : http://lppm.unsera.ac.id



Section Editor

Berkomunikasi dengan author jika artikel masih ada kekurangan.
Bisa rekomendasi reject jika memang tidak sesuai menurut section editor

Mengirimkan artikel yang layak ke reviewer

Submission Review Copyediting Production User added as a stage participant. [Help](#)

Submission Files

7032-1 trial, Reviewer A.docx June 17, 2020 Article Text [Download All Files](#)

Pre-Review Discussions

Name	From	Last Reply	Replies	Closed
[i] Editorial Assignment	lppmunsera	-	0	<input type="checkbox"/>

[Add discussion](#)

Participants

[Assign](#)

Journal editor

- supriyadi supriyadi

Section editor

- latihan latihan

Author

- trial trial

Lembaga Penelitian dan Pengabdian Kepada Masyarakat (LPPM)

Jalan Raya Serang – Cilegon KM. 5 Taman Drangong Serang – Banten
Telp.: (0254) 8235007, Fax. : 8235008
e-mail : lppm@unsera.ac.id website : http://lppm.unsera.ac.id



UNSERA

UNIVERSITAS SERANG RAYA

Section Editor

Partisipants bisa dipilih siapa yang mau berpartisipasi

Subject diisi

Pesannya apa

Bisa tambahkan file jika memang diperlukan

Participants

- | | |
|-------------------------------------|-------------------------------------|
| <input checked="" type="checkbox"/> | trial trial, Author |
| <input checked="" type="checkbox"/> | latihan latihan, Section editor |
| <input checked="" type="checkbox"/> | supriyadi supriyadi, Journal editor |

Subject *

This field is required.

Message *

B *I* U Upload

Attached Files

Search

Upload File

Select Files

No Files

Lembaga Penelitian dan Pengabdian Kepada Masyarakat

Jalan Raya Serang – Cilegon KM. 5 Taman Drangong Serang – Banten

Telp.: (0254) 8235007, Fax. : 8235008

e-mail : lppm@unsera.ac.id website : <http://lppm.unsera.ac.id>




Section Editor

Pastikan nama author, email, afiliasi author dihapus terlebih dahulu sebelum dikirimkan ke reviewer

Send to Review



Select files below to send them to the review stage.

Submission Files		Q Search	Upload File
<input checked="" type="checkbox"/>	 7032-1 trial, Reviewer A.docx	June 17, 2020	Article Text

Send to Review

Cancel

Lembaga Penelitian dan Pengabdian Kepada Masyarakat (LPPM)

Jalan Raya Serang – Cilegon KM. 5 Taman Drangong Serang – Banten


Telp.: (0254) 8235007, Fax. : 8235008

e-mail : lppm@unsera.ac.id website : http://lppm.unsera.ac.id



Section Editor

Pastikan nama author, email, afiliasi author dihapus terlebih dahulu sebelum dikirimkan ke reviewer

Review Files	Q Search	Upload/Select Files
▶  7033-1 Article Text, Reviewer A.docx	June 17, 2020	Article Text

Reviewers	Add Reviewer
No Items	


Revisions	Q Search	Upload File
No Files		

Lembaga Penelitian dan Pengabdian Kepada Masyarakat (LPPM)

Jalan Raya Serang – Cilegon KM. 5 Taman Drangong Serang – Banten
Telp.: (0254) 8235007, Fax. : 8235008
e-mail : lppm@unsera.ac.id website : http://lppm.unsera.ac.id



Review
Section Editor memilih Reviewer

Review Files	Q Search	Upload/Select Files
▶  7033-1 Article Text, Reviewer A.docx	June 17, 2020	Article Text

Reviewers	Add Reviewer
No Items	

Revisions	Q Search	Upload File
No Files		

Lembaga Penelitian dan Pengabdian Kepada Masyarakat (LPPM)

Jalan Raya Serang – Cilegon KM. 5 Taman Drangong Serang – Banten
Telp.: (0254) 8235007, Fax. : 8235008
e-mail : lppm@unsera.ac.id website : http://lppm.unsera.ac.id



Review
Section Editor memilih Reviewer

Add Reviewer

Locate a Reviewer [Filters](#)

<input checked="" type="radio"/>	Hajiriyani Yusuf Fajri Diponegoro University 0 Never assigned	▼
----------------------------------	--	---

1 of 1 reviewers

[Create New Reviewer](#) [Enroll Existing User](#)

Lembaga Penelitian dan Pengabdian Kepada Masyarakat (LPPM)

Jalan Raya Serang – Cilegon KM. 5 Taman Drangong Serang – Banten

Telp.: (0254) 8235007, Fax. : 8235008

e-mail : lppm@unsera.ac.id website : <http://lppm.unsera.ac.id>



Important Dates

2020-07-08

Response Due Date


2020-07-15

Review Due Date

Review
Section Editor memilih Reviewer
Bisa tambahkan file review form jika ada

Close File Selection

Files To Be Reviewed Q Search

<input checked="" type="checkbox"/>	 033-1 Article Text, Reviewer A.docx	June 17, 2020	Article Text
-------------------------------------	---	---------------	--------------

Review Type

- Double-blind
- Blind
- Open

Lembaga Penelitian dan Pengabdian Kepada Masyarakat (LPPM)

Jalan Raya Serang – Cilegon KM. 5 Taman Drangong Serang – Banten

Telp.: (0254) 8235007, Fax. : 8235008

e-mail : lppm@unsera.ac.id website : http://lppm.unsera.ac.id



Review

Reviewer akan menerima notifikasi dan mereview sampai memberikan rekomendasi

My Assigned

 [New Submission](#)

2319	latihan	2020-07-08 Response Due
⚠ Waiting for a response from the reviewer.		2020-07-15 Review Due

1 of 1 submissions

1. Request 2. Guidelines 3. Download & Review 4. Completion

Request for Review

You have been selected as a potential reviewer of the following submission. Below is an overview of the submission, as well as the timeline for this review. We hope that you are able to participate.

Article Title
latihan

Abstract
latihan

Review Type
Double-blind

Review Files

7033-1 Article Text, Reviewer A.docx June 17, 2020

[View All Submission Details](#)

Review Schedule

2020-06-17 <small>Editor's Request</small>	2020-07-08 <small>Response Due Date</small>	2020-07-15 <small>Review Due Date</small>
---	--	--

[About Due Dates](#)

Yes, I agree to have my data collected and stored according to the [privacy statement](#).

Lembaga Penelitian dan Pengabdian Kepada Masyarakat

Jalan Raya Serang – Cilegon KM. 5 Taman Drangong Serang – Banten
Telp.: (0254) 8235007, Fax. : 8235008
e-mail : lppm@unsera.ac.id website : http://lppm.unsera.ac.id



Review: latihan

1. Request

2. Guidelines

3. Download & Review

4. Completion

Reviewer Guidelines

This publisher has not set any reviewer guidelines.

Review

Reviewer akan menerima notifikasi dan mereview sampai memberikan rekomendasi

Review Discussions

[Add discussion](#)

Name	From	Last Reply	Replies	Closed
No Items				

Recommendation

Select a recommendation and submit the review to complete the process. You must enter a review or upload a file before selecting a recommendation.

Choose One

- Choose One
- Accept Submission
- Revisions Required
- Resubmit for Review
- Resubmit Elsewhere
- Decline Submission
- See Comments

* Denotes required field



Review

Reviewer akan menerima notifikasi dan mereview sampai memberikan rekomendasi

Review: latihan

- 1. Request
- 2. Guidelines
- 3. Download & Review
- 4. Completion

Review Submitted

Thank you for completing the review of this submission. Your review has been submitted successfully. We appreciate your contribution to the quality of the work that we publish; the editor may contact you again for more information if needed.

Review Discussions

[Add discussion](#)

Name	From	Last Reply	Replies	Closed
------	------	------------	---------	--------

No Items

Lembaga Penelitian dan Pengabdian Kepada Masyarakat (LPPM)

Jalan Raya Serang – Cilegon KM. 5 Taman Drangong Serang – Banten

Telp.: (0254) 8235007, Fax. : 8235008

e-mail : lppm@unsera.ac.id website : http://lppm.unsera.ac.id



Section Editor mengucapkan
terimakasih ke Reviewer

Reviewers			Add Reviewer
▶ Hajiryan Yusuf Fajri	Review Submitted Recommendation: Accept Submission	Double-blind	Read Review

Participants [Assign](#)

Journal editor

▶ supriyadi supriyadi

Section editor

Recommendation

Set or adjust the reviewer recommendation.

Accept Submission ▼

Reviewer rating

Rate the quality of the review provided. This rating is not shared with the reviewer.

No rating

★★★★★

★★★★☆

★★★☆☆

★★☆☆☆

★☆☆☆☆

Confirm

Cancel



Section Editor mengucapkan
terimakasih ke Reviewer

Reviewers		Add Reviewer	
▶ Hajiriyani Yusuf Fajri	Complete Recommendation: Accept Submission	Double-blind	Thank Reviewer Revert Decision

Thank Reviewer ✕

Reviewer

Hajiriyani Yusuf Fajri <riyanfajri9523@gmail.com>

Email to be sent to reviewer

Hajiriyani Yusuf Fajri:

Thank you for completing the review of the submission, "latihan," for Repository Universitas Serang Raya. We appreciate your contribution to the quality of the work that we publish.

latihan latihan
latihan.latihan@gmail.com

Do not send email to Reviewer.

Thank Reviewer **Cancel**



UNSERA
UNIVERSITAS SERANG RAYA

Section Editor menyampaikan
rekomendasi ke author

Request Revisions

Accept Submission

Decline Submission

Participants

Assign

Journal editor

▶ supriyadi supriyadi

Lembaga Penelitian dan Pengabdian Kepada Masyarakat (LPPM)

Jalan Raya Serang – Cilegon KM. 5 Taman Drangong Serang – Banten

Telp.: (0254) 8235007, Fax. : 8235008

e-mail : lppm@unsera.ac.id website : http://lppm.unsera.ac.id



Section Editor menyampaikan rekomendasi ke author

- Send an email notification to the author(s): trial trial
- Do not send an email notification

trial trial:

We have reached a decision regarding your submission to Repository Universitas Serang Raya, "latihan".

Our decision is to: Accept Submission

latihan latihan
latihan.latihan@gmail.com

+ Add Reviews to Email

Select review files to share with the author(s) Q Search Upload File

<input type="checkbox"/>	7033-1 Article Text, Reviewer A.docx	June 17, 2020	Article Text
--------------------------	--------------------------------------	---------------	--------------

+ Select Library Files to attach

Next: Select Files for Copyediting Cancel



To facilitate the reviewer, please repair it by sending two files: <https://ejournal.lppmunsera.org/index.php/JSMI/about/editorialPolicies#peerReviewProcess>

(1) Revised paper file, by marking the revised part in blue or yellow highlight.

<https://drive.google.com/file/d/1U2c-2xic4yI-9X6TbJO9afbVlhCu34Eb/view>

(2) The file "Response_to_Reviewer" which records each question per reviewer and answers for each question (along with the revision location in the new paper file).

https://drive.google.com/file/d/1yhCDD7t6F9c0tKGNQJ7Hajwpwpg_h4bf/view



Reviewer's Attachments

[] Editor Decision

2020-06-17 01:51 PM

Author menerima notifikasi dan mengupload revisi jika diperlukan

trial trial:

We have reached a decision regarding your submission to Repository Universitas Serang Raya, "latihan".

Our decision is: Revisions Required

latihan latihan
latihan.latihan@gmail.com

Reviewer A:

qq

Recommendation: Accept Submission



Revisions

Search

Upload File

No Files

Upload Review File



1. Upload File

2. Review Details

3. Confirm

Article Component *

Article Text

Drag and drop a file here to begin upload

Upload File

Continue

Cancel

Lembaga Penelitian dan Pengabdian Kepada Masyarakat (LPPM)

Jalan Raya Serang – Cilegon KM. 5 Taman Drangong Serang – Banten

Telp.: (0254) 8235007, Fax. : 8235008

e-mail : lppm@unsera.ac.id website : <http://lppm.unsera.ac.id>



Author menerima notifikasi dan mengupload revisi jika diperlukan

The screenshot displays a web interface for uploading a review file. At the top, a file explorer window is open, showing a list of files in the 'Downloads' folder. The files include 'Reviewer A.docx' (18 KB), 'Reviewer B.docx' (14 KB), and two PDF files: '5c90ad12c2699.pdf' (1.359 KB) and '186540-Article Text-...' (636 KB). Below the file explorer, there is a blue bar with the text 'Upload Review File' and a close button. Underneath, there are three steps: '1. Upload File', '2. Review Details', and '3. Confirm'. The '1. Upload File' step is active. Below this, there is a dropdown menu labeled 'Article Component *' with 'Article Text' selected. A green checkmark indicates that the file 'Article Text, Reviewer A.docx' has been successfully uploaded. A 'Change File' button is visible next to the file name. At the bottom, there are 'Continue' and 'Cancel' buttons.

Name	Date	Type	Size
2213-Article Text-70...	13/06/2020 12:07	MICROSOFT WORD D...	300 KB
Reviewer A.docx	15/06/2020 12:02	Microsoft Word D...	18 KB
Reviewer B.docx	15/06/2020 12:02	Microsoft Word D...	14 KB
Last week (17)			
5c90ad12c2699.pdf	13/06/2020 15:22	Adobe Acrobat D...	1.359 KB
186540-Article Text-...	13/06/2020 14:53	Adobe Acrobat D...	636 KB

Upload Review File

1. Upload File 2. Review Details 3. Confirm

Article Component *
Article Text

✓ Article Text, Reviewer A.docx **Change File**

Continue **Cancel**



Author menerima notifikasi dan mengupload revisi jika diperlukan

Upload Review File

1. Upload File 2. Review Details 3. Confirm

Article Text, Reviewer A.docx [Edit](#)

docx 17KB

[Continue](#) [Cancel](#)

Upload Review File

1. Upload File 2. Review Details 3. Confirm

File Added

[Add Another File](#)

[Complete](#) [Cancel](#)

Revisions		Search	Upload File
7034-1	Article Text, Reviewer A.docx	June 17, 2020	Article Text

Lembaga Penelitian dan Pengabdian Kepada Masyarakat (LPPM)

Jalan Raya Serang – Cilegon KM. 5 Taman Drangong Serang – Banten
Telp.: (0254) 8235007, Fax. : 8235008
e-mail : lppm@unsera.ac.id website : http://lppm.unsera.ac.id



Section editor menerima revisi author dan mengirimkan ke editing jika sudah setuju

Review Files

Q Search Upload/Select Files

▶ 7033-1 Article Text, Reviewer A.docx	June 17, 2020	Article Text
---	---------------	--------------

Request Revisions

Accept Submission

Decline Submission

Reviewers

Add Reviewer

▶ Hajiriyah Yusuf Fajri	Reviewer Thanked Recommendation: Accept Submission	Double-blind	Revert Decision
-------------------------	--	--------------	-----------------

Revisions

Q Search Upload File

▶ 7034-1 Article Text, Reviewer A.docx	June 17, 2020	Article Text
---	---------------	--------------

Participants

Logout as 123456 Assign

Journal editor

▶ supriyadi supriyadi

Section editor

▶ latihan latihan

Author

Lembaga Penelitian dan Pengabdian Kepada Masyarakat (LPPM)

Jalan Raya Serang – Cilegon KM. 5 Taman Drangong Serang – Banten

Telp.: (0254) 8235007, Fax. : 8235008

e-mail : lppm@unsera.ac.id website : http://lppm.unsera.ac.id



UNSERA

UNIVERSITAS SERANG RAYA

Section editor mengirimkan ke editing jika sudah setuju

We have reached a decision regarding your submission to Repository Universitas Serang Raya, "latihan".

Our decision is to: Accept Submission

latihan latihan

latihan.latihan@gmail.com

+ Add Reviews to Email

Select review files to share with the author(s)

Search

Upload File

<input type="checkbox"/>	7033-1	Article Text, Reviewer A.docx	June 17, 2020	Article Text
<input checked="" type="checkbox"/>	7034-1	Article Text, Reviewer A.docx	June 17, 2020	Article Text

Accept Submission



Select the files you would like to forward to the Copyediting stage.

Revisions

Search

<input checked="" type="checkbox"/>	7034-1	Article Text, Reviewer A.docx	June 17, 2020	Article Text
-------------------------------------	--------	-------------------------------	---------------	--------------

Record Editorial Decision

Previous: Author Notification

Cancel

+ Select Library Files to attach

Next: Select Files for Copyediting

Cancel

PPM)



Section editor mengirimkan ke editing jika sudah setuju

[Submission](#)

[Review](#)

[Copyediting](#)

[Production](#)

[Help](#)

Notification

Assign a copyeditor using the Assign link in the Participants list.

Draft Files

[Search](#)

[Upload/Select Files](#)

[7035-1 Article Text, Reviewer A.docx](#)

June 17,
2020

Article Text

[Send To Production](#)

Participants

[Logout as 123456](#)

[Assign](#)

[Journal editor](#)

[Copyediting Discussions](#)

[Add discussion](#)

Lembaga Penelitian dan Pengabdian Kepada Masyarakat (LPPM)

Jalan Raya Serang – Cilegon KM. 5 Taman Drangong Serang – Banten

Telp.: (0254) 8235007, Fax. : 8235008

e-mail : lppm@unsera.ac.id website : <http://lppm.unsera.ac.id>



UNSERA
UNIVERSITAS SERANG RAYA

Copyediting

Copyediting mendapat tugas dari section editor/editor

Copyediting consult Author

Copyediting upload final copyedit

Section Editor Send to Production

Lembaga Penelitian dan Pengabdian Kepada Masyarakat (LPPM)

Jalan Raya Serang – Cilegon KM. 5 Taman Drangong Serang – Banten

Telp.: (0254) 8235007, Fax. : 8235008

e-mail : lppm@unsera.ac.id website : <http://lppm.unsera.ac.id>



Copyediting mendapat tugas dari section editor/editor

Locate a User

Copyeditor
 Search User By Name

Name
<input checked="" type="radio"/> supriyadi supriyadi

1 of 1 items

Choose a predefined message to use, or fill out the form below.

Message

B *I* U

NAME :

I would ask that you undertake the copyediting of "latihan" for Repository Universitas Serang Raya by following these steps.

1. Click on the Submission URL below.

Lembaga Penelitian dan Pengabdian Kepada Masyarakat (LPPM)

Jalan Raya Serang – Cilegon KM. 5 Taman Drangong Serang – Banten
Telp.: (0254) 8235007, Fax. : 8235008
e-mail : lppm@unsera.ac.id website : http://lppm.unsera.ac.id



Copyediting mendapat tugas dari section editor/editor

Locate a User

Copyeditor Search User By Name

Name
<input checked="" type="radio"/> supriyadi supriyadi

1 of 1 items

Choose a predefined message to use, or fill out the form below.

Message

Name	From	Last Reply	Replies	Closed
Copyediting Request	lppmunsera	-	0	<input type="checkbox"/>

Section editor

- ▶ latihan latihan

Copyeditor

- supriyadi supriyadi

Author



Copyediting berkomunikasi dengan author tentang hasil revisinya

Copyediting Discussions

Name	From	Last Reply	Replies	Closed
Copyediting Request	Ippmunsera	-	0	<input type="checkbox"/>

[Add discussion](#)

- Journal editor
 - ▶ supriyadi supriyadi
- Section editor
 - ▶ latihan latihan

Participants

<input checked="" type="checkbox"/>	trial trial, Author
<input type="checkbox"/>	latihan latihan, Section editor
<input checked="" type="checkbox"/>	supriyadi supriyadi, Journal editor, Copyeditor

Upload a Discussion File

- 1. Upload File
- 2. Review Details
- 3. Confirm

If you are uploading a revision of an existing file, please indicate which file.

Article Component *

Drag and drop a file here to begin upload

Subject *

Message *



Copyediting berkomunikasi dengan author tentang hasil revisinya

Upload a Discussion File

1. Upload File 2. Review Details 3. Confirm

Possible Duplication or Revision Detected
The name of the uploaded file resembles the name of a file intended to replace "Reviewer B.docx"? If so, select the existing file" before proceeding.

supriyadi1, Reviewer B.docx [Edit](#)

docx 13KB

Continue Cancel

Complete Cancel

Continue Cancel

File Added

Add Another File

Attached Files

Search Upload File Select Files

7036-2	supriyadi1, Reviewer B.docx (2)	June 17, 2020	Article Text
--------	---------------------------------	---------------	--------------

▶ hasil editing	supriyadi1	-	0	<input type="checkbox"/>
	2020-06-17 02:36			
	PM			



Author menerima notifikasi dan memberikan revisi atau setuju jika hasil editing sesuai

Submission

Review

Copyediting

Production

Copyediting Discussions

[Add discussion](#)

Name	From	Last Reply	Replies	Closed
hasil editing	supriyadi1 2020-06-17 02:36 PM	-	0	<input type="checkbox"/>


hasil editing



Participants

supriyadi supriyadi (supriyadi1)
trial trial (trial)

Messages

Note	From
Mohon bisa direview kembali hasil editing kami  supriyadi1, Reviewer B.docx (2)	supriyadi1 2020-06-17 02:36 PM

[Add Message](#)

Lembaga Penelitian dan

Jalan Raya Serang – Cilegon KM
Telp.: (0254) 8235007, Fax. : 82
e-mail : lppm@unsera.ac.id web



Author menerima notifikasi dan memberikan revisi atau setuju jika hasil editing sesuai

Message *

Rich text editor toolbar with icons for Bold (B), Italic (I), Underline (U), Link, Unlink, Source, Full Screen, Image Upload, and Attach. The text area contains the text "Hasil revisi dari author|". A green circular icon is visible in the bottom right corner of the text area.

Attached Files Search **Upload File**

No Files

Attached Files	Search	Upload File
7038-1 trial, Reviewer B.docx	June 17, 2020	Article Text

Lembaga Penelitian dan Pengabdian Kepada Masyarakat (LPPM)

Jalan Raya Serang – Cilegon KM. 5 Taman Drangong Serang – Banten
Telp.: (0254) 8235007, Fax. : 8235008
e-mail : lppm@unsera.ac.id website : http://lppm.unsera.ac.id



Artikel yang sudah sesuai bisa dikirimkan ke production

Copyedited Q Search **Upload/Select Files**

No Files

Upload/Select Files ✕

Copyedited Upload File

Show files from all accessible workflow stages.

Copyediting		
<input type="checkbox"/>	7035-1	Article Text, Reviewer A.docx Article Text
<input type="checkbox"/>	7036-2	supriyadi1, Reviewer B.docx (2) Article Text
<input checked="" type="checkbox"/>	7038-1	trial, Reviewer B.docx Article Text

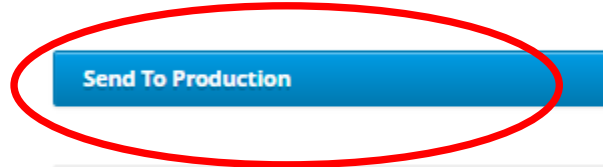
Copyedited	Q Search	Upload/Select Files
<input type="checkbox"/> 7039-1 trial, Reviewer B.docx	June 17, 2020	Article Text



Artikel yang sudah sesuai bisa dikirimkan ke production

Draft Files Search Upload/Select Files

<input type="checkbox"/>	7035-1	Article Text, Reviewer A.docx	June 17, 2020	Article Text
--------------------------	--------	-------------------------------	---------------	--------------



Send Email

Send an email notification to the author(s): trial trial

Do not send an email notification

Rich text editor toolbar with icons for Bold, Italic, Underline, Link, Unlink, Text Color, Background Color, and Upload.

trial trial:

The editing of your submission, "latihan," is complete. We are now sending it to production.

Submission URL: <https://e-jurnal.lppmunsera.org/index.php/lib/authorDashboard/submission/2319>

latihan latihan
latihan.latihan@gmail.com

Send To Production ×

Select the files you would like to forward to the Production stage.

Draft Files Search

<input type="checkbox"/>	7035-1	Article Text, Reviewer A.docx	June 17, 2020	Article Text
--------------------------	--------	-------------------------------	---------------	--------------

Copyedited Search

<input checked="" type="checkbox"/>	7039-1	trial, Reviewer B.docx	June 17, 2020	Article Text
-------------------------------------	--------	------------------------	---------------	--------------



Production

Layout Editor create Galley

Layout Editor contact Author

Layout Editor upload final Galley

Section Editor/Editor Scheduling

Name
<input checked="" type="radio"/> supriyadi supriyadi

1 of 1 items

Choose a predefined message to use, or fill out the form below.

Request Galleys

Message

B *I* U Upload

NAME :

The submission "latihan" to Repository Universitas Serang Raya now needs galley laid out by following these steps.

1. Click on the Submission URL below.
2. Log into the journal and use the Layout Version file to create the galley according to the journal's standards.
3. Send the COMPLETE email to the editor.

Lembaga Penelitian dan Pengabdian Kepada Masyarakat (LPPM)

Jalan Raya Serang – Cilegon KM. 5 Taman Drangong Serang – Banten

Telp.: (0254) 8235007, Fax. : 8235008

e-mail : lppm@unsera.ac.id website : http://lppm.unsera.ac.id



Production

Layout Editor create Galley

Layout Editor contact AU

Layout Editor upload final Galley

Section Editor/Editor Scheduling

Production Discussions		Add discussion		
Name	From	Last Reply	Replies	Closed
▶ [] Request Galleys	lppmunsera	-	0	<input type="checkbox"/>
	2020-06-17 02:56 PM			

[Logout as supriyadi1](#) [Assign](#)

Journal editor

- ▶ supriyadi supriyadi

Section editor

- ▶ latihan latihan

Layout Editor

Lembaga Penelitian dan Pengabdian Kepada Masyarakat (LPPM)

Jalan Raya Serang – Cilegon KM. 5 Taman Drangong Serang – Banten

Telp.: (0254) 8235007, Fax. : 8235008

e-mail : lppm@unsera.ac.id website : <http://lppm.unsera.ac.id>



Production Discussions [Add discussion](#)

Name	From	Last Reply	Replies	Closed
Request Galleys	lppmunsera 2020-06-17 02:56 PM	-	0	<input type="checkbox"/>

<input checked="" type="checkbox"/>	trial trial, Author
<input type="checkbox"/>	latihan latihan, Section editor
<input checked="" type="checkbox"/>	supriyadi supriyadi, Journal editor, Layout Editor

Subject *
Hasil Layout

Message *

Mohon bisa koreksi lagi hasil layout kami sebelum kami ubah ke pdf

[Logout as supriyadi1](#) [Assign](#)

Journal editor

- ▶ supriyadi supriyadi

Section editor

- ▶ latihan latihan

Layout Editor

Attached Files [Search](#) [Upload File](#) [Select Files](#)

▶ 7041-1	trial, Reviewer B.docx	June 17, 2020	Article Text
-----------	------------------------	---------------	--------------



Author menerima notifikasi dan akan mengecek dan memberikan komentar

Production Discussions		Add discussion		
Name	From	Last Reply	Replies	Close
Hasil Layout	supriyadi1 2020-06-17 02:58 PM	-	0	<input type="checkbox"/>

supriyadi supriyadi (supriyadi1)
trial trial (trial)

Messages	From
Mohon bisa koreksi lagi hasil layout kami sebelum kami ubah ke pdf trial, Reviewer B.docx	supriyadi1 2020-06-17 02:58 PM

Message *

B <i>I</i> <u>U</u> Upload
OK

Lembaga Penelitian dan Pengabdian Kepada Masyarakat (LPPM)

Jalan Raya Serang – Cilegon KM. 5 Taman Drangong Serang – Banten
Telp.: (0254) 8235007, Fax. : 8235008
e-mail : lppm@unsera.ac.id website : http://lppm.unsera.ac.id



Upload a File Ready for Publication ✕

1. Upload File 2. Review Details 3. Confirm

Galleys

Galley Label *

*Typically used to identify the file format (e.g. PDF, HTML, etc.). **

*Language **

This galley will be available at a separate website.

Article Component *

1. Upload File 2. Review Details 3. Confirm

supriyadi1, IJMTM_leaflet.pdf [Edit](#)

1. Upload File 2. Review Details 3. Confirm

File Added



Future Issues

Create Issue

Issue

Create Issue

Identification

<input type="text" value="4"/>	<input type="text" value="1"/>	<input type="text" value="2020"/>
<i>Volume</i>	<i>Number</i>	<i>Year</i>

Title

Volume Number Year Title

Description

▶ [Vol. 4 No. 1 \(2020\): Trial OJS](#)

0



Submission

Review

Copyediting

Production

Help

Journal

Website

Workflow

Distribution

Production

Publication

Schedule for publication in

Vol. 4 No. 1 (2020): Trial OJS

To Be Assigned *

Pages

1-11

Pages

Permissions

Attach the following permissions to the submission:

<https://creativecommons.org/licenses/by-sa/4.0>

License URL

Repository Universitas Serang Raya

Copyright Holder

2020

Copyright Year

Schedule For Publication

Participants

Logout as supriyadi1

Assign

Journal editor



Tools

Statistics

▼ [Vol. 4 No. 1 \(2020\): Trial OJS](#)

1

Edit

Preview

Publish Issue

Delete

Lembaga Penelitian dan Pengabdian Kepada Masyarakat (LPPM)

Jalan Raya Serang – Cilegon KM. 5 Taman Drangong Serang – Banten

Telp.: (0254) 8235007, Fax. : 8235008

e-mail : lppm@unsera.ac.id website : <http://lppm.unsera.ac.id>



UNSERA
UNIVERSITAS SERANG RAYA

Sumber

Direktorat Jenderal Penguatan Riset dan Pengembangan Kementerian Riset, Teknologi, dan Pendidikan Tinggi (2018) Pedoman Akreditasi Jurnal Ilmiah

Direktorat Pengelolaan Kekayaan Intelektual Deputi Bidang Penguatan Riset dan Pengembangan Kementerian Riset Teknologi/ Badan Riset dan Inovasi Nasional (2020) Panduan Editorial Pengelolaan Jurnal Ilmiah

Lukman (2020) Menuju Jurnal Terindeks Scopus Regulasi dan Strategi Pengelolaan

Tinton Atmaja (2020) Pelatihan Implementasi Jurnal Elektronik journal Berbasis OJS 3

Lembaga Penelitian dan Pengabdian Kepada Masyarakat (LPPM)

Jalan Raya Serang – Cilegon KM. 5 Taman Drangong Serang – Banten

Telp.: (0254) 8235007, Fax. : 8235008

e-mail : lppm@unsera.ac.id website : <http://lppm.unsera.ac.id>



UNSERA
UNIVERSITAS SERANG RAYA

TERIMA KASIH

Lembaga Penelitian dan Pengabdian Kepada Masyarakat (LPPM)

Jalan Raya Serang – Cilegon KM. 5 Taman Drangong Serang – Banten

Telp.: (0254) 8235007, Fax. : 8235008

e-mail : lppm@unsera.ac.id website : <http://lppm.unsera.ac.id>