

Citizen Science at Universities:

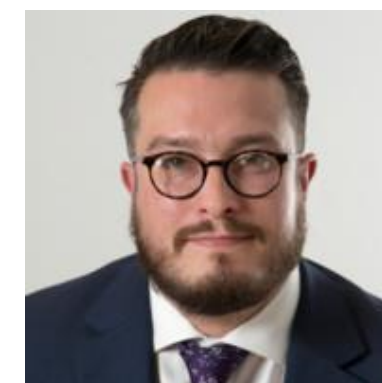
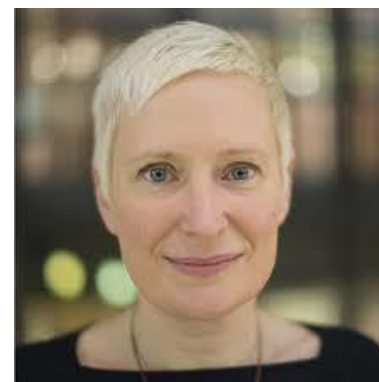
Trends, guidelines and recommendations

LIBER WORKING GROUP SEMINAR ON CITIZEN SCIENCE

THE CITIZEN SCIENCE WORKING GROUP



Chair: Dr. Paul Ayris, UCL Libraries



PLEASE JOIN US



The [LIBER Roadmap to Open Science](#) makes a set of four strong recommendations to European research libraries, recommendations which remains guidelines for our working group. we act in six strategic directions:

- Projects
- Staff development
- Partnerships and participation
- Building Citizen Science Infrastructure at Libraries
- Advocacy and policy
- Creating a Librarian's Guide to Citizen Science

To join: Please write Mitja V. Iskrić, mitja.vovk-iskric@ctk.uni-lj.si

TODAY'S PROGRAMME

15.00-16.30 CET

- *Current trends within Citizen Science at universities – the practitioner's viewpoint.* Anne Kathrine Overgaard and Thomas Kaarsted.
- *A template for a Citizen Science Single Contact Point which your institution could start developing e.g. guidelines.* Tiberius Ignat.
- *A snapshot of the forthcoming Research Librarian's Guide to Citizen Science and what possible roles could research libraries adopt for moving forward in support of citizen science activities.* Simon Worthington.
- Q&A

PLEASE NOTE: THIS WEBINAR IS RECORDED AND PUBLISHED ONLINE!

Current Trends Within Citizen Science at Universities: The Practitioner's Viewpoint

- *Anne Kathrine Overgaard, Head of External Projects, Faculty of Health Science*
- *Thomas Kaarsted, Deputy Library Director*

We both work at the University of Southern Denmark. Since 2017 we have run our university's Citizen Science Network.



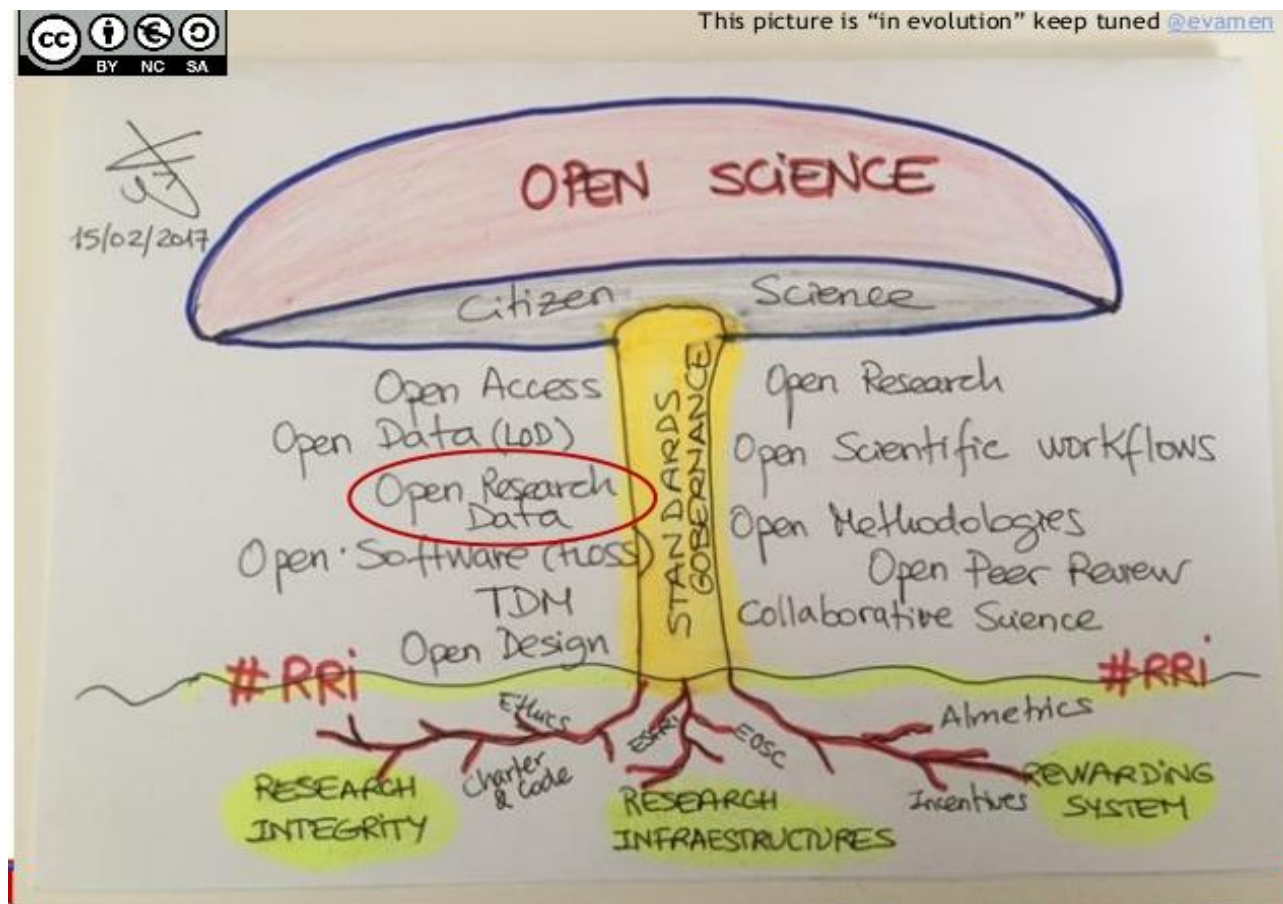


THE NEXT APP. 15 MIN...

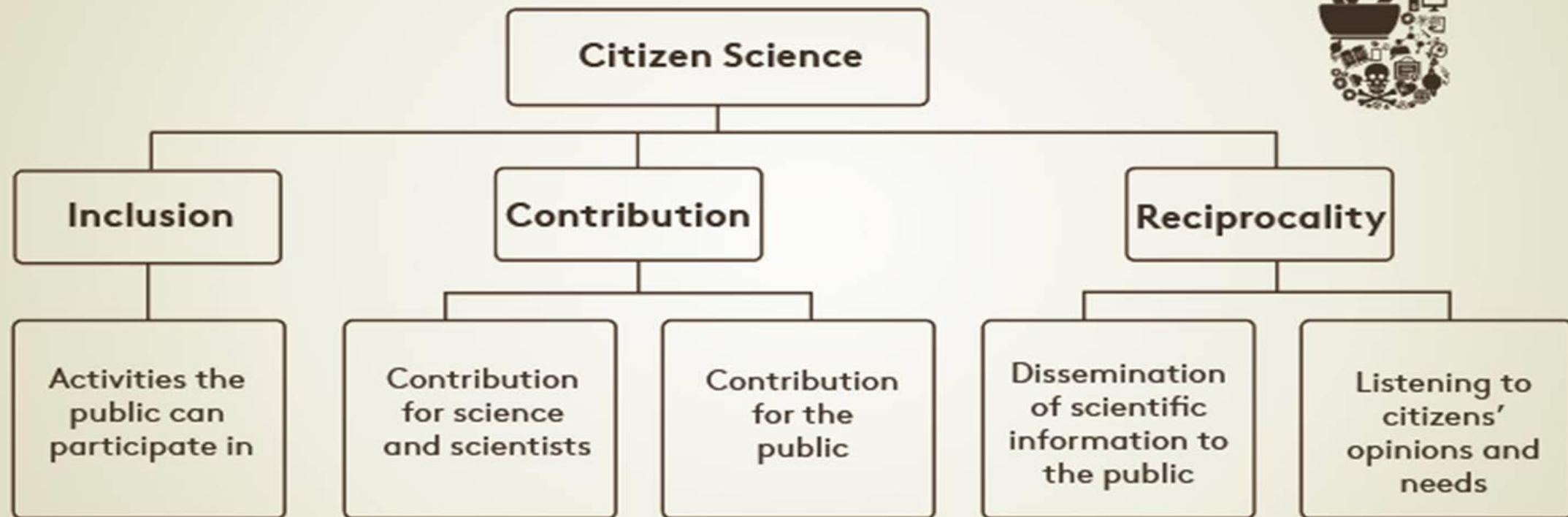
- What is Citizen Science?
- The SDU Approach
- Other approaches
- Cases from SDU
- Two trends
- What can libraries do?

WHAT IS CITIZEN SCIENCE?

“Citizen Science refers to the general public engagement in scientific research activities when citizens actively contribute to science either with their intellectual effort or surrounding knowledge or with their tools and resources.”



Hvad er Citizen Science?



KOMMUNIKATION – PARTNERSKABER – TVÆRVIDENSKABELIGE FORSKNINGSPROJEKTER

(Kilde: Golumbic et al. 2017)

Participation in citizen science

Level 4 'Extreme'

- Collaborative science – problem definition, data collection and analysis

Level 3 'Participatory science'


- Participation in problem definition and data collection

Level 2 'Distributed intelligence'

- Citizens as basic interpreters

Level 1 'Crowdsourcing'

- Citizens as sensors

The background image shows a modern university building with a large glass facade and a curved, tiered stone plaza in the foreground. A few people are sitting on the steps. The sky is clear and blue. The SDU logo is visible on the building's facade.

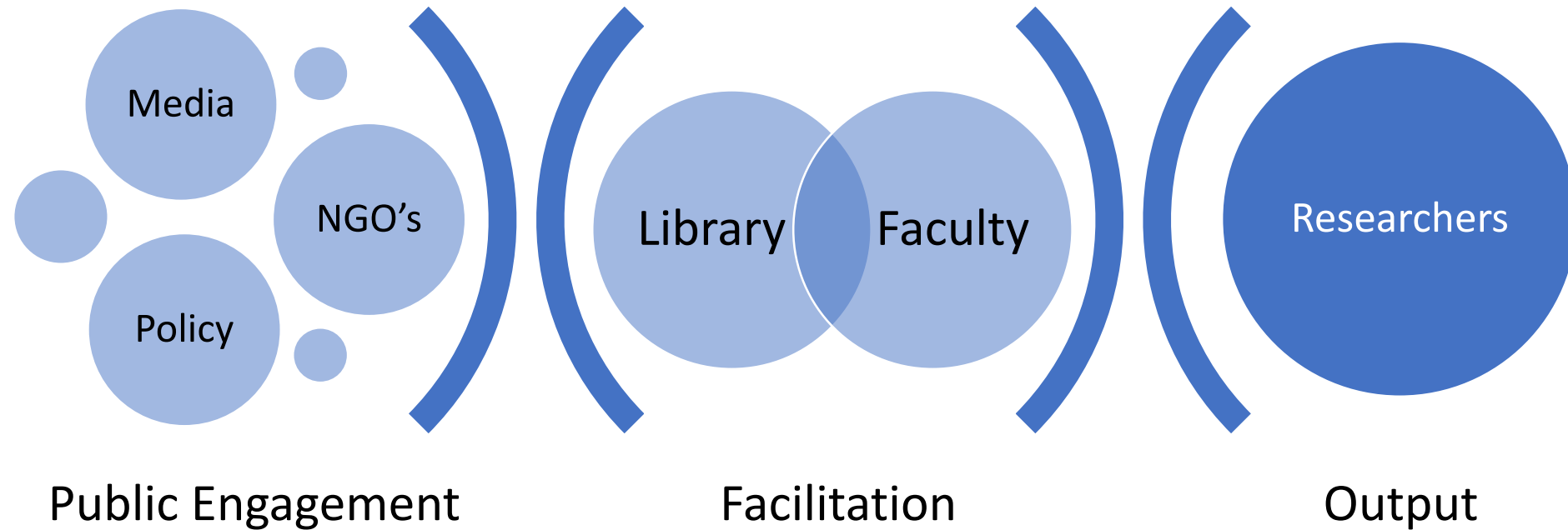
In Denmark, Citizen Science is often used for data collection and mapping of nature areas, but at SDU we see Citizen Science as more than that.

Citizen Science is about generating interaction and dialogue between citizens and researchers, thereby reducing the distance between them in order to encourage a debate based on knowledge and facts.

The Power of Many. The Citizen Science Network is a partnership between the faculties at SDU, Odense University Hospital, University Library of Southern Denmark and SDU RIO.



A NETWORK OF PARTNERS



SDU committed in 2019 on the UN SDG's

- We want to help the world community create value by working together towards the UN Global Goals for Sustainable Development
- We will develop skills and capabilities that encourage unique, innovative solutions for the benefit of a sustainable world
- And we will contribute to moulding a sustainable future by breaking down boundaries and removing limitations

SUSTAINABLE
DEVELOPMENT GOALS



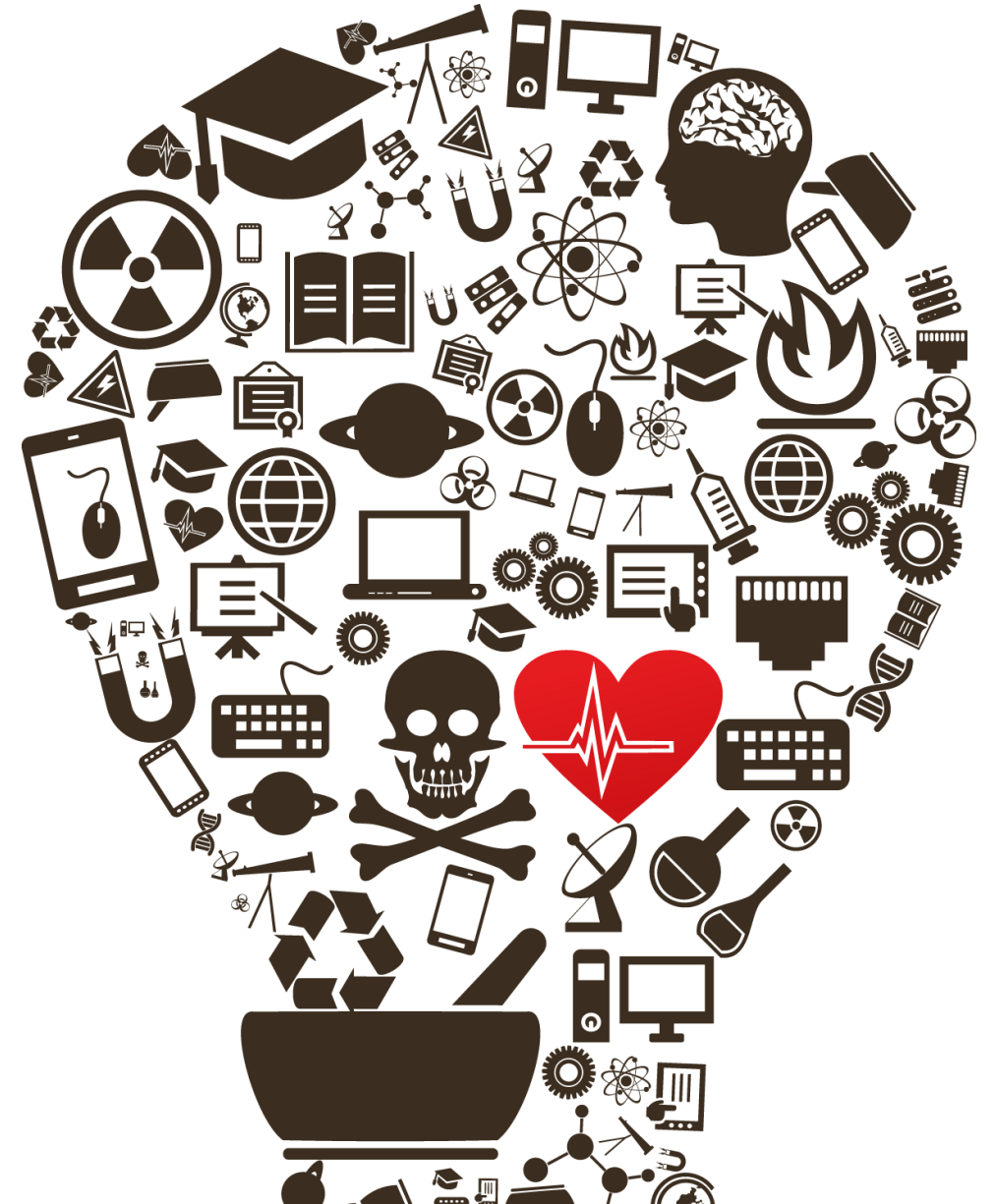
SDU

SUSTAINABLE DEVELOPMENT GOALS

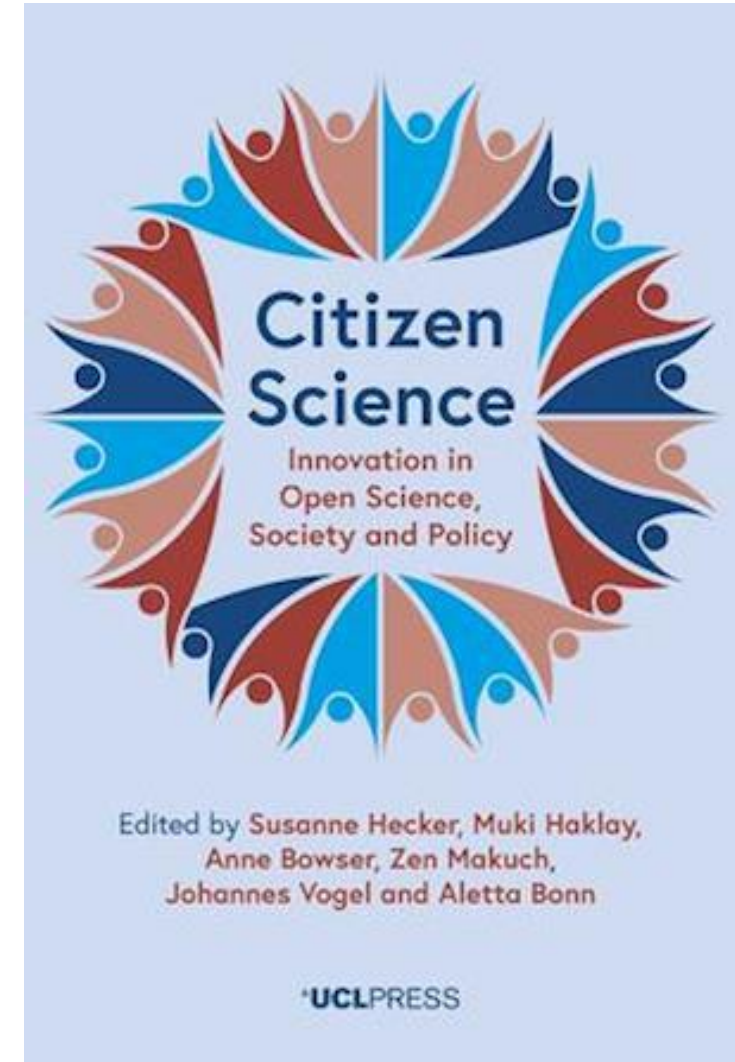



SDU runs several SDU's Challenges

E.g. on Active Living, Sustainable Transport
Going Green, etc. Several have potential links
to Citizen Science.



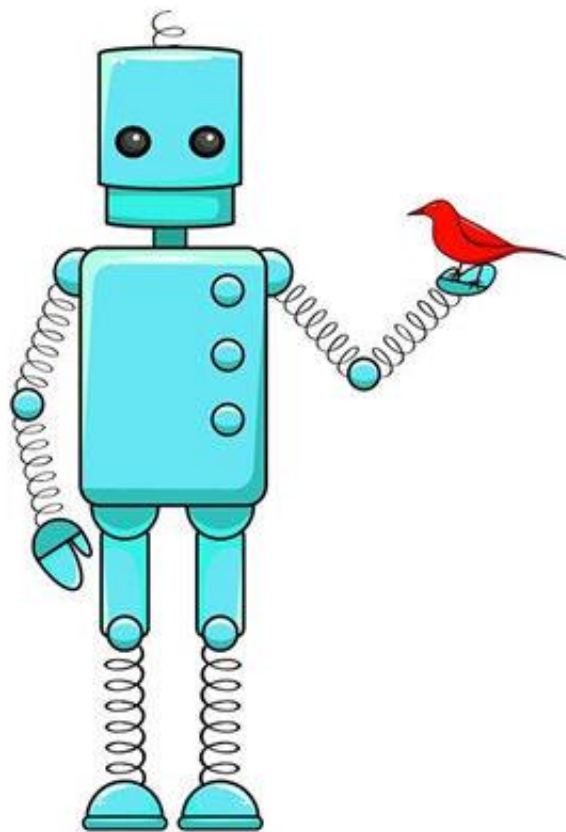
OTHER APPROACHES





Enabling
RESEARCHERS and CITIZENS
to create and conduct
RESEARCH COLLABORATIONS
that produce
SOUND SCIENCE
while
SUPPORTING THE UN SDGs

The image shows a woman with curly hair and glasses, wearing a white top and a dark necklace, speaking and gesturing with her hands. She is positioned in front of a large Samsung monitor. The monitor displays a presentation slide with a red circular background and white text. The text reads: 'Enabling RESEARCHERS and CITIZENS to create and conduct RESEARCH COLLABORATIONS that produce SOUND SCIENCE while SUPPORTING THE UN SDGs'. The background of the slide features a crowd of people. To the right of the monitor is a window with white blinds and a wooden windowsill. On the wall below the window are two white electrical outlets. In the foreground, a glass and a mug are visible on a desk.



scistarter

People-powered science.

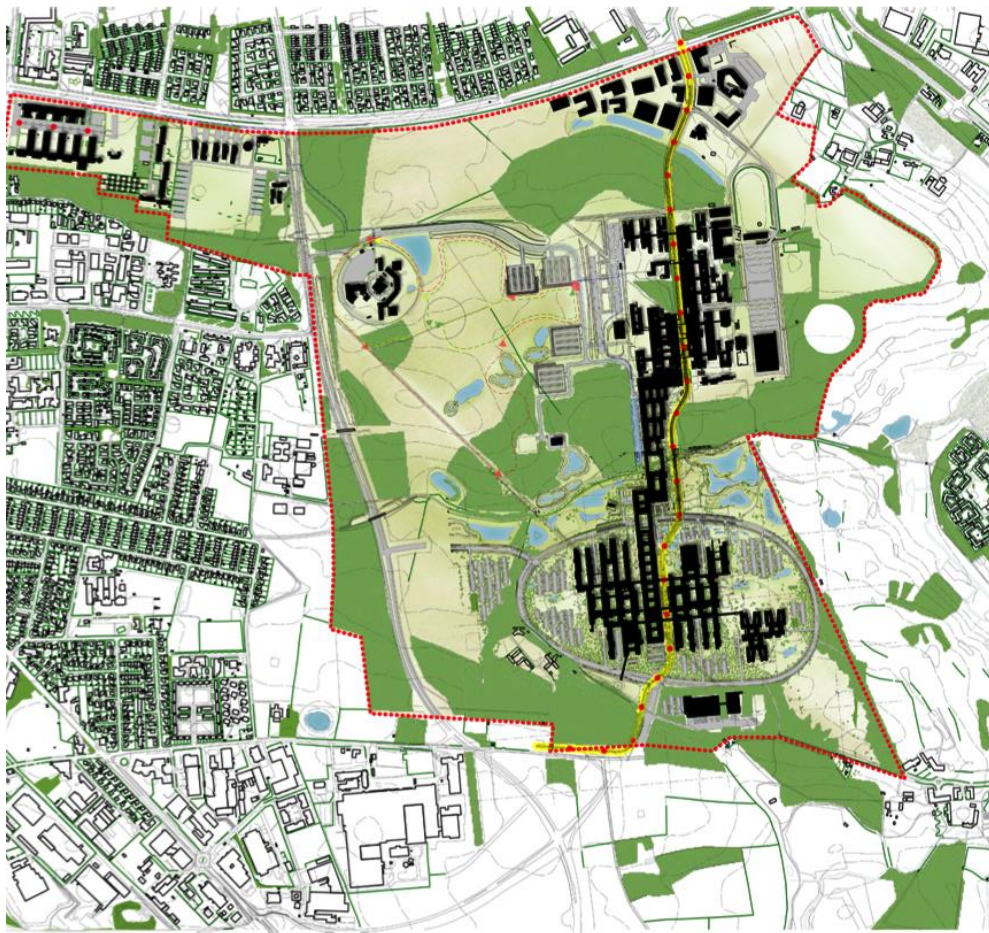
A FEW SDU CASES...



A HEALTHIER SOUTHERN DENMARK

	2017	2018	2019
Total Reach	272.725	192.889	487.452
Facebook (videos viewed)	134.279	130.552	159.939
Web (articles wiewed)	44.003	51.518	74.682
Votes	11.895	6.985	17.990





Campus Odense Active Living

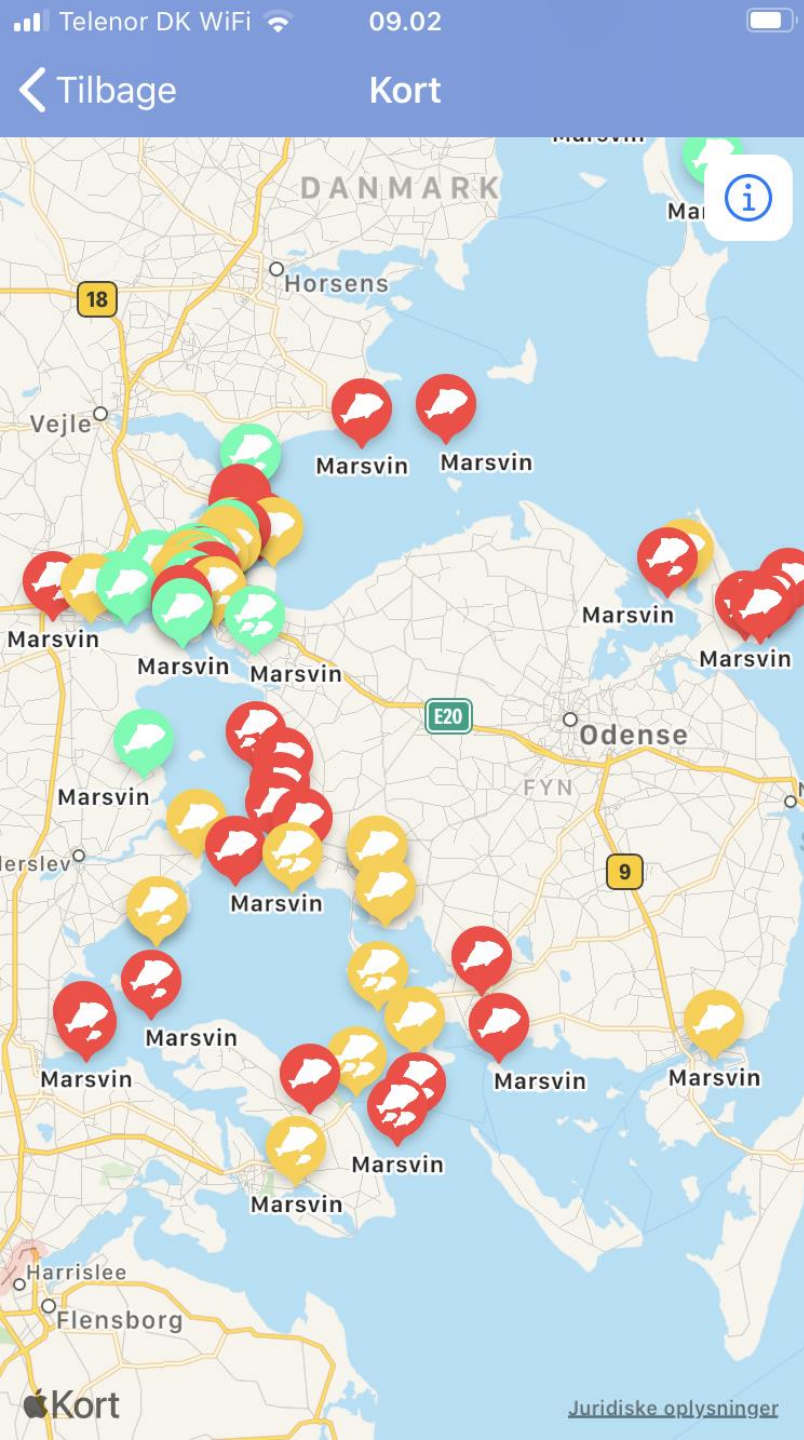
Aim: To include the city of Odense in an outdoor living lab on 80 HA land around the university.

Mediapartner: Fyens Stiftstidende

Collaborative proces.

More than 1.000 input from citizens, employees, students and civil society.





MARINE TRACKER

Since 2019

+5.000 sightings

+2.500 participants

Data on motivation:

Environment

Interest in marine life

Local community



Inkl.
filmklip

TV 2/FYN OG SDU GI'R DIG FRIT LEJDE



Anne Kathrine Overgaard & Thomas Kaarsted

26. januar 2013



BRING YOUR OWN DEVICE

A Citizen Science partnership within EOL and the recycling of electronic waste

A university, a media outlet, 4 municipalities, 11 private sector partners, repair cafés

Unique research data: incl. 17 containers full

Dissminisation of scientific information to the public

A reach of +150.000 across platforms

The Power of Many: Know your partners!

Commission

English Search

Home >

Horizon Europe - the next research and innovation framework programme

Horizon Europe - the next research and innovation framework programme

The Commission's proposal for Horizon Europe, strategic planning, implementation, news, related links.

PAGE CONTENTS

Developing Horizon Europe

Telenor DK WiFi 15.29 tandfonline.com

Google Se denne side på: Dansk Oversæt

Journal
International Journal of Science Education, Part B >
Communication and Public Engagement
Latest Articles

47	0	0
Views	CrossRef citations to date	Altmetric

Articles

Science literacy in action: understanding scientific data presented in a citizen science platform by non-expert adults

Yaela N. Golumbic , Barak Fishbain & Ayelet Baram-Tsabari 

Received 31 Dec 2019, Accepted 12 May 2020, Published online: 30 May 2020

Download citation
<https://doi.org/10.1080/21548455.2020.1769877>
Check for updates

Vælg sprog

TWO TRENDS

Partnerships between reserachers and schools building on science and public engagement

The upcoming Horizon Europe opens this Fall including RRI and CS grounding in society

THE ROLE OF THE LIBRARY – TAKE YOUR PICK?

PARTNERSHIPS: INTERNAL AND EXTERNAL PARTNERS

HOME OF "SINGLE POINT OF CONTACT"

RESEARCH SUPPORT

PUBLIC ENGAGEMENT

SCIENTIFIC LITERACY

SCIENCE COMMUNICATION

PROJECT MANAGEMENT

ADCOACAY

FAIR DATA

DISSIMINATION OF SCIENTIFIC INFORMATION TO THE PUBLIC

FUNDING

THANK YOU, LIBER!

Anne Kathrine Overgaard, ako@sdu.dk

Thomas Kaarsted, thk@bib.sdu.dk