

RISIS



RESEARCH INFRASTRUCTURE FOR SCIENCE
AND INNOVATION POLICY STUDIES

RISIS: Data infrastructure for science and innovation studies

Emanuela Reale – CNR IRCrES

RISIS Policymakers session #3

May 29th 2020 – ONLINE FORMAT



This project is funded by the European Union under Horizon2020 Research and Innovation Programme Grant Agreement n° 824091

What is RISIS



- A European research infrastructure focusing on services and data for science and innovation studies
- Initiated in 2014 and renewed in 2018 until 2022
- It provides European researchers
 - Freely on line accessible services
 - Project-based access to curated & enriched datasets
 - Tools for methodological advances
 - Registers on research organizations and firms
 - Ontologies, visualization maps
 - Indicators on Actors, Topics and Geography

Four priorities in the RISIS vision:

- *Visibility* towards academics, stakeholders and policy makers
- *Accessibility* through distant access, increased tools and visualization
- *Exploration* of new indicators also based on bottom-up learning and ontologies
- *Exploitation* of resources and services developed within the infrastructure
- 18 partners within Europe and Israel

RISIS datasets families

RISIS



Firm Innovation

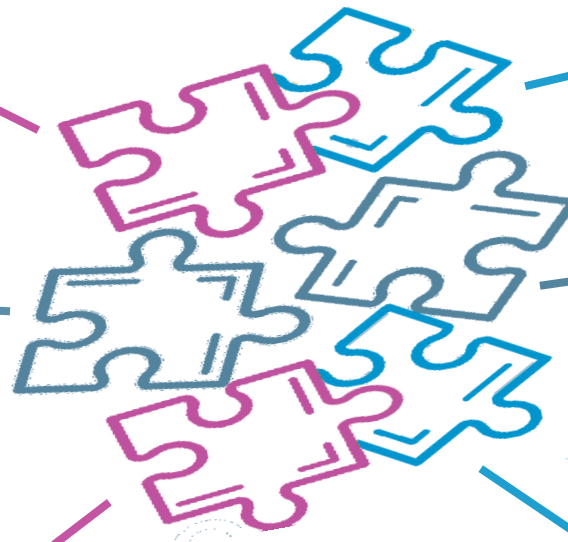
Knowledge dynamics

PhD and careers

European Integration

Policy Learning

2 Registers on Firms and Research Organizations



The KNOWMAK tool

RISIS



Visualizing knowledge creation in the European Research Area: the RISIS-KNOWMAK tool



Presented during the #2 Policymakers session on December 2019
slides and video: <https://zenodo.org/record/3591854#.Xs6DUmgzbcc>

RISIS users

RISIS



Evidence-based
policy making for
**Research and
Innovation**



**Science Technology
and Innovation
scholar's community**



**Researchers
from
neighbouring
fields**



**National
Statistical
Offices and
European
Statistical Units**



Governments

Research orientation

providing facilities, resources and services to researchers in the STI field and beyond

developing new dataset and indicators on STI policies

Inscribed in the open science movement

Access is granted for ‘publishable research’

Embedded in the VRE and in the OpenAire environment (capability to match RISIS data with other open access resources)

Using Zenodo as repository for outputs and outcomes

Impact and interactions with the research community

Important investment in training, dissemination and communication

