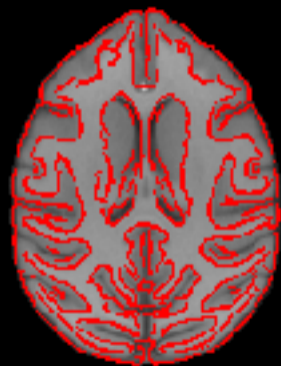
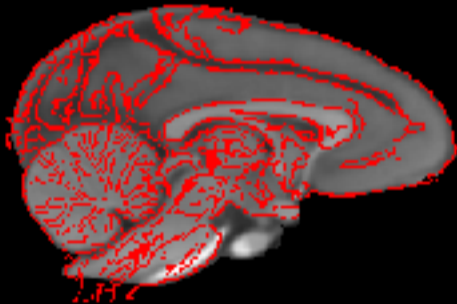
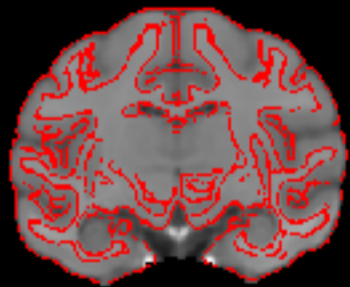


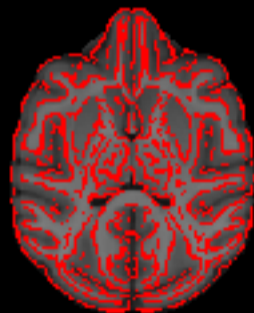
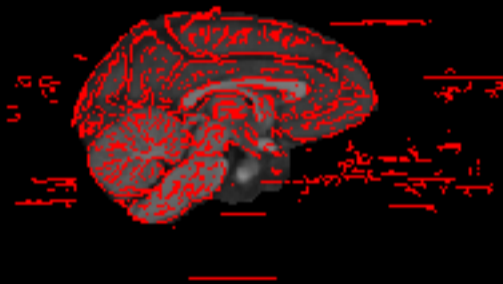
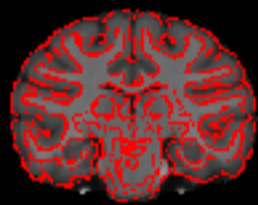
D99 edges on INIA volume



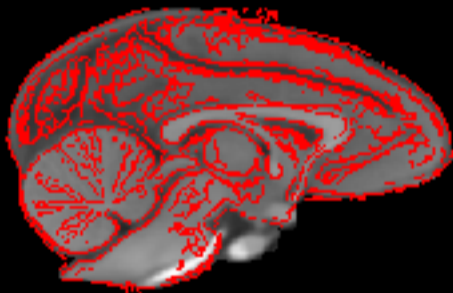
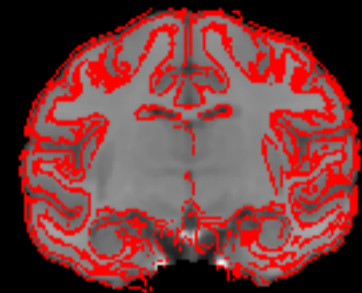
D99 edges on MNI volume



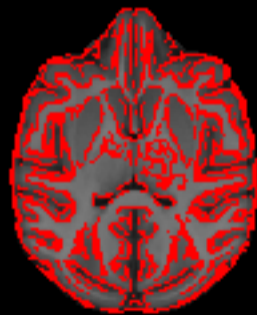
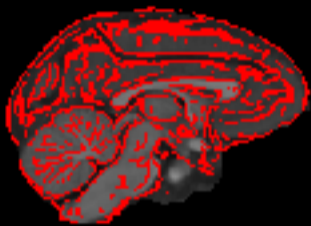
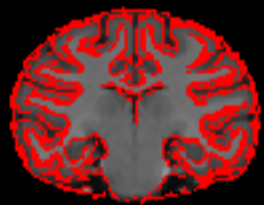
# D99 edges on YRK volume



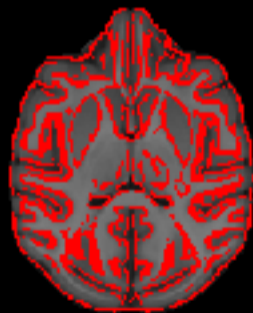
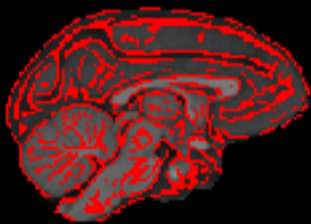
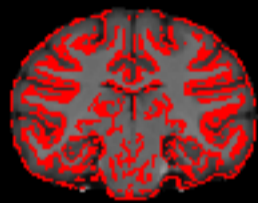
INIA edges on MNI volume



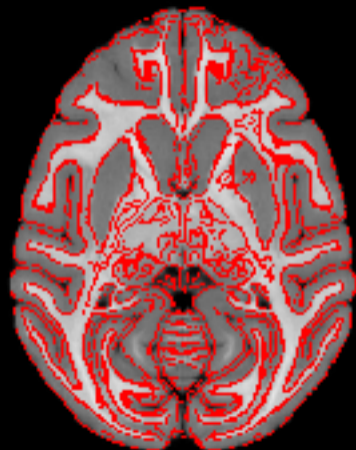
# INIA edges on YRK volume



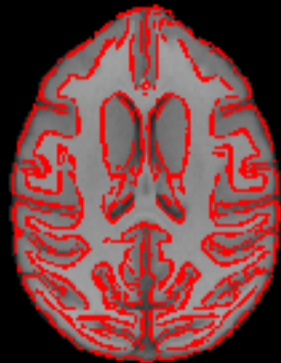
# MNI edges on YRK volume



NMTv1.2 edges on D99 volume

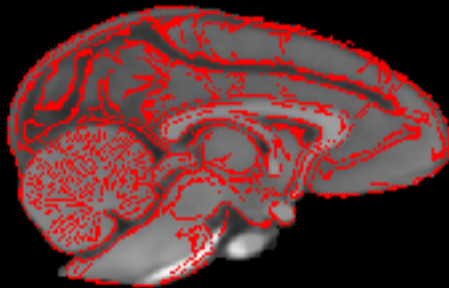
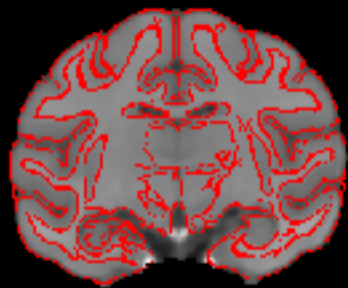


NMTv1.2 edges on INIA volume





NMTv1.2 edges on MNI volume



NMTv1.2 edges on NMTv1.3 volume



NMTv1.2 edges on NMTv2.0\_acpc\_asym volume



NMTv1.2 edges on NMTv2.0\_acpc\_sym volume



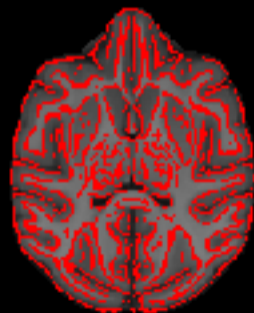
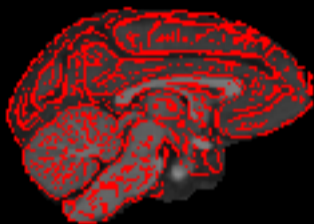
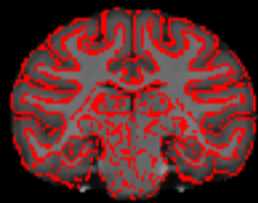
NMTv1.2 edges on NMTv2.0\_stereo\_asym volume



NMTv1.2 edges on NMTv2.0\_stereo\_sym volume



# NMTv1.2 edges on YRK volume

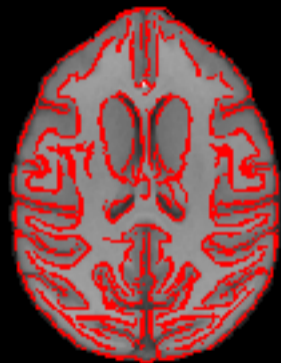


NMTv1.3 edges on D99 volume

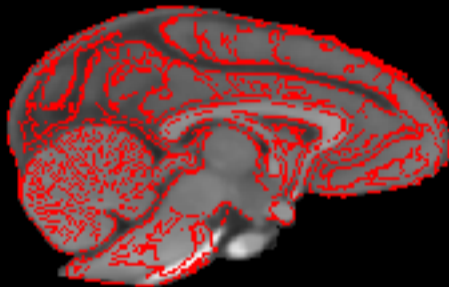
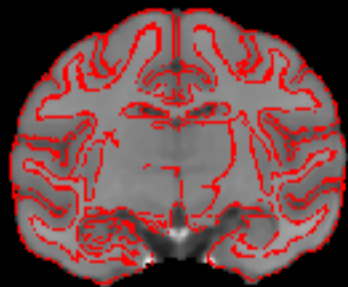




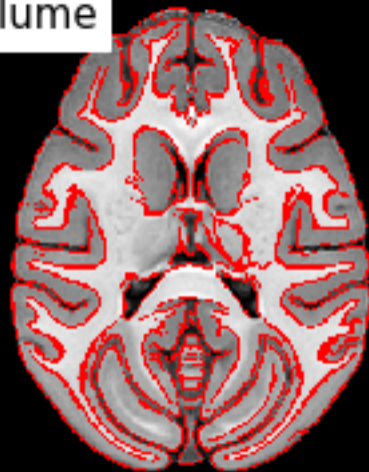
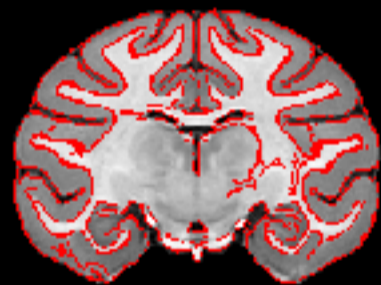
NMTv1.3 edges on INIA volume



NMTv1.3 edges on MNI volume



NMTv1.3 edges on NMTv2.0\_acpc\_asym volume



NMTv1.3 edges on NMTv2.0\_acpc\_sym volume



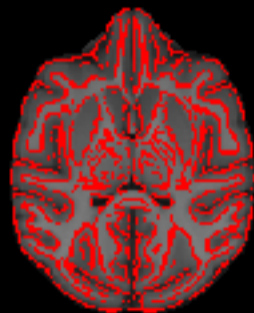
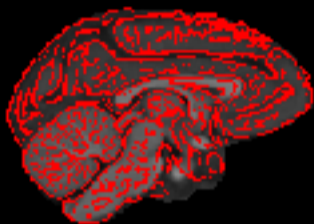
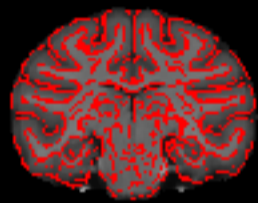
NMTv1.3 edges on NMTv2.0\_stereo\_asym volume



NMTv1.3 edges on NMTv2.0\_stereo\_sym volume



# NMTv1.3 edges on YRK volume

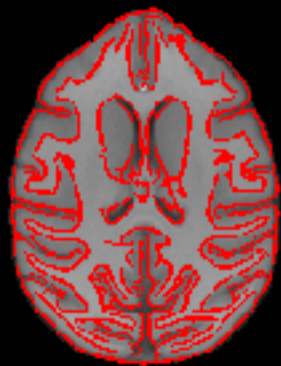


NMTv2.0\_acpc\_asym edges on D99 volume

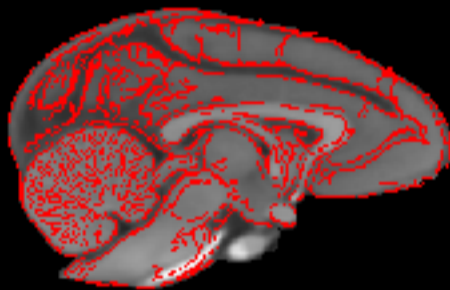
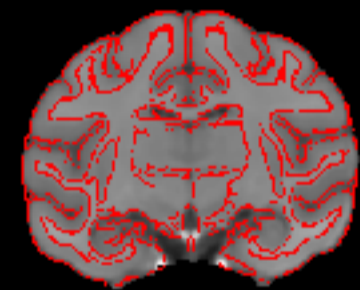




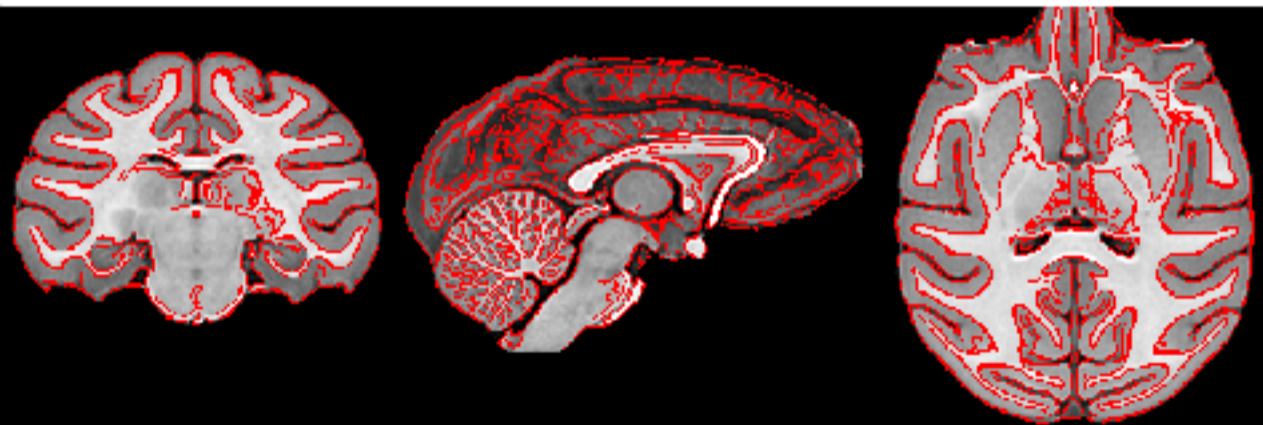
NMTv2.0\_acpc\_asym edges on INIA volume



NMTv2.0\_acpc\_asym edges on MNI volume



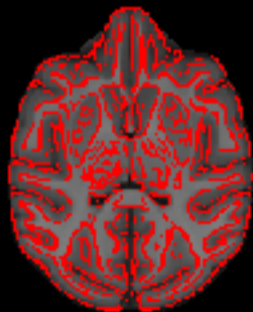
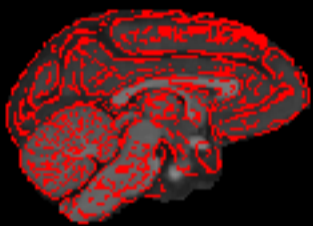
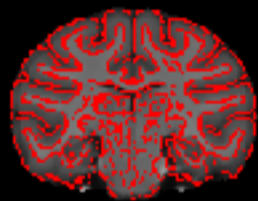
NMTv2.0\_acpc\_asym edges on NMTv2.0\_stereo\_asym volume



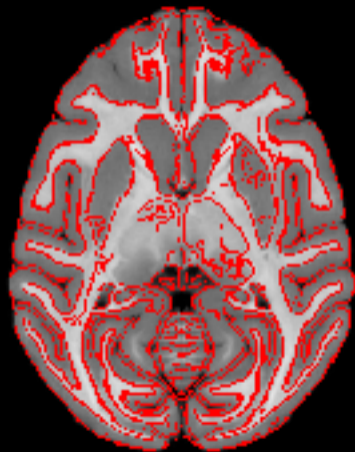
NMTv2.0\_acpc\_asym edges on NMTv2.0\_stereo\_sym volume



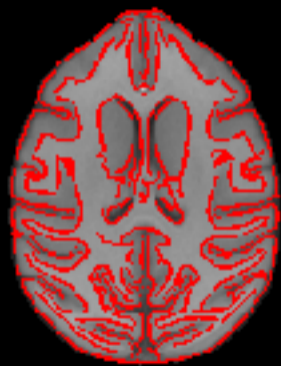
NMTv2.0\_acpc\_asym edges on YRK volume



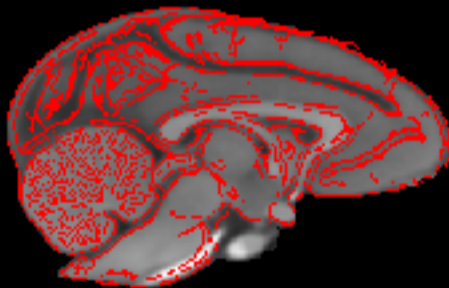
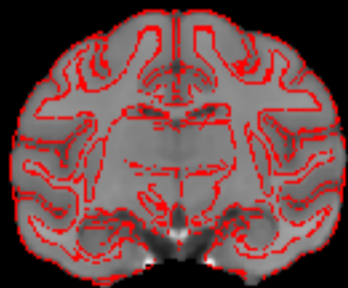
NMTv2.0\_acpc\_sym edges on D99 volume



NMTv2.0\_acpc\_sym edges on INIA volume

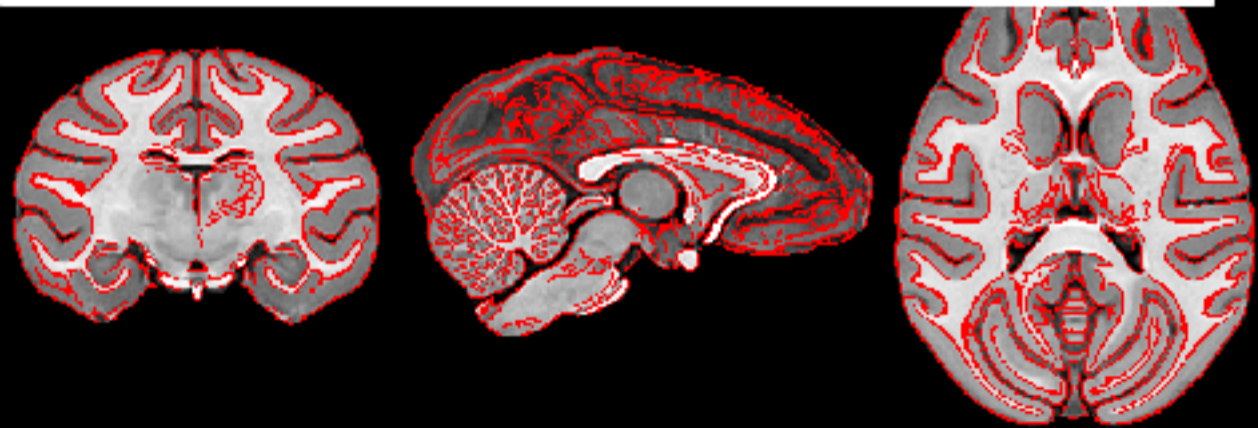


NMTv2.0\_acpc\_sym edges on MNI volume

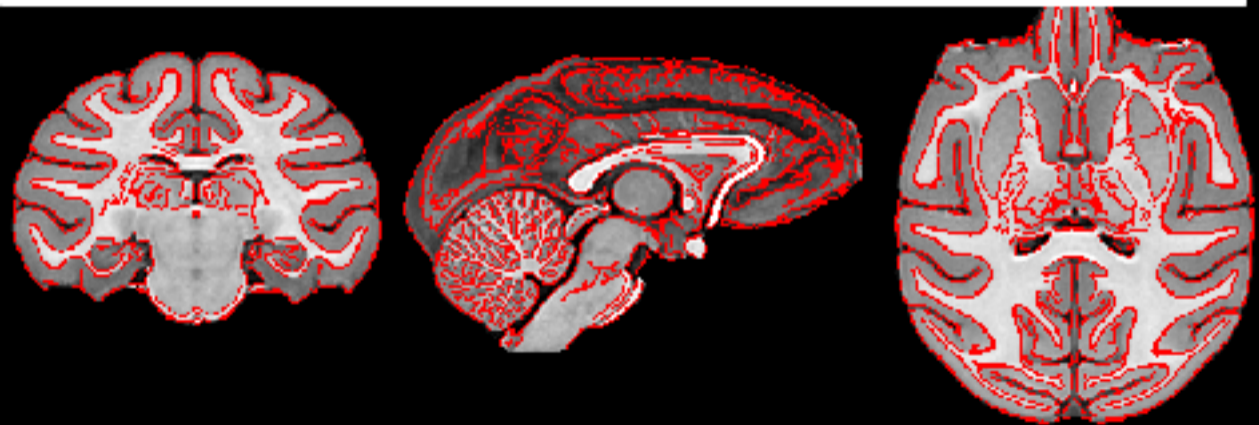




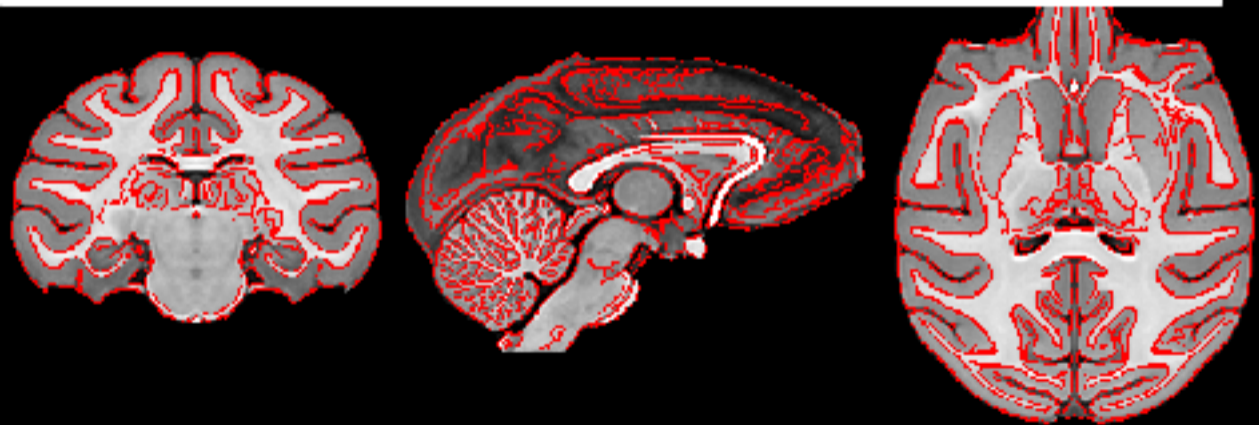
NMTv2.0\_acpc\_sym edges on NMTv2.0\_acpc\_asym volume



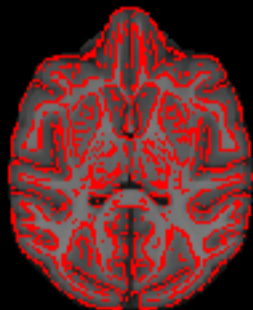
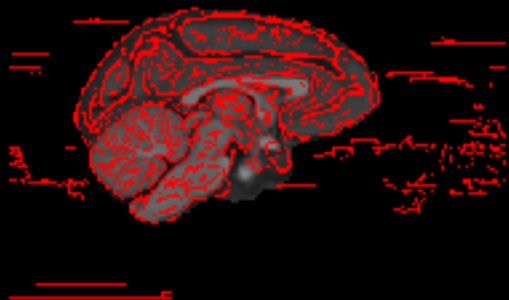
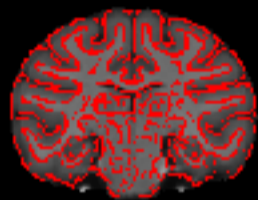
NMTv2.0\_acpc\_sym edges on NMTv2.0\_stereo\_asym volume



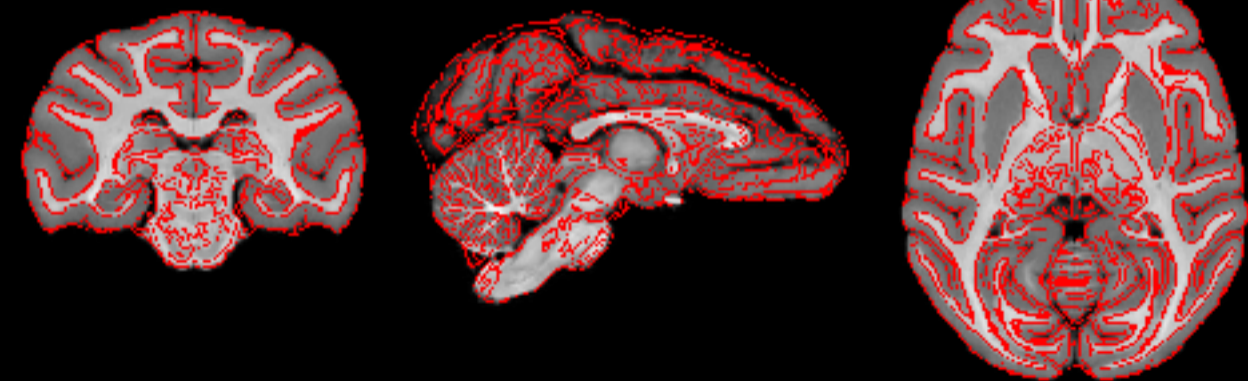
NMTv2.0\_acpc\_sym edges on NMTv2.0\_stereo\_sym volume



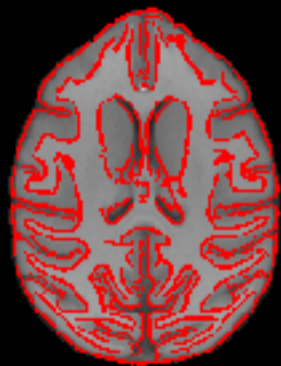
# NMTv2.0\_acpc\_sym edges on YRK volume



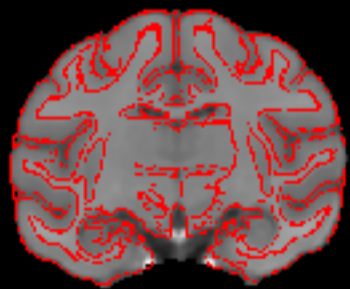
NMTv2.0\_stereo\_asym edges on D99 volume



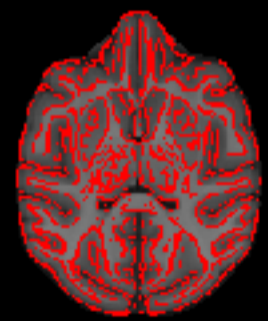
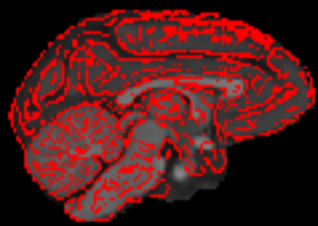
NMTv2.0\_stereo\_asym edges on INIA volume



NMTv2.0\_stereo\_asym edges on MNI volume

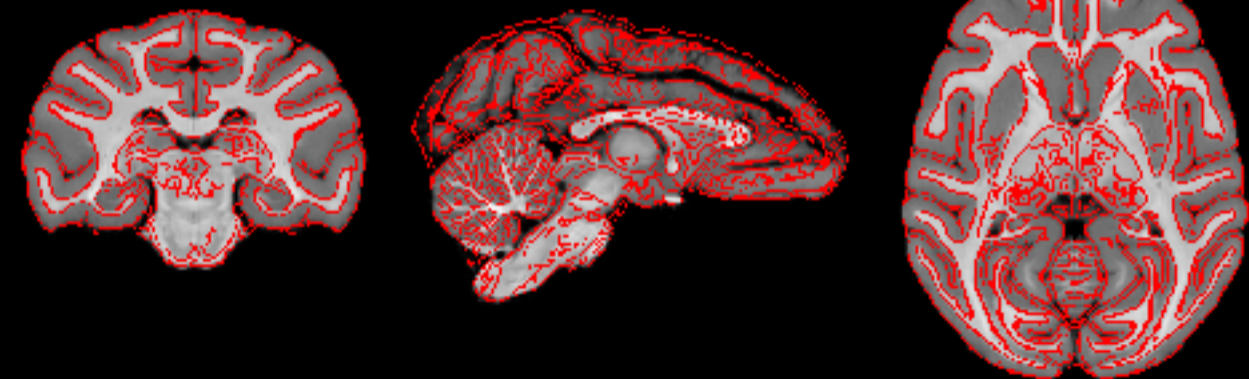


NMTv2.0\_stereo\_asym edges on YRK volume

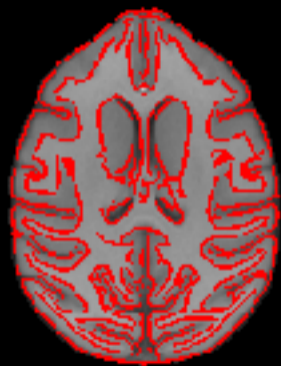




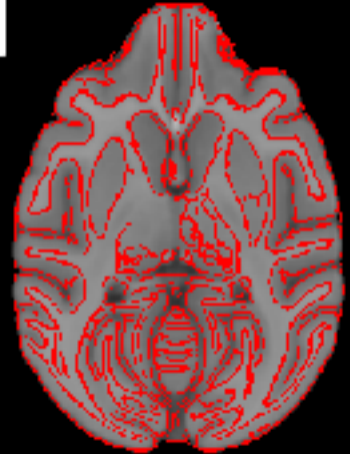
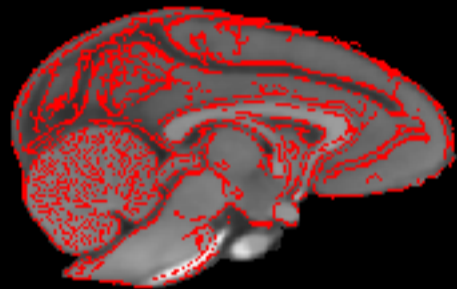
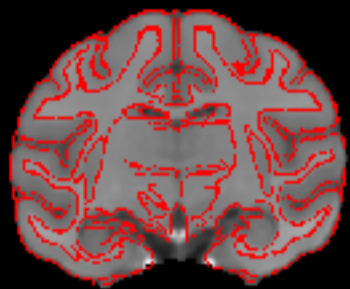
NMTv2.0\_stereo\_sym edges on D99 volume



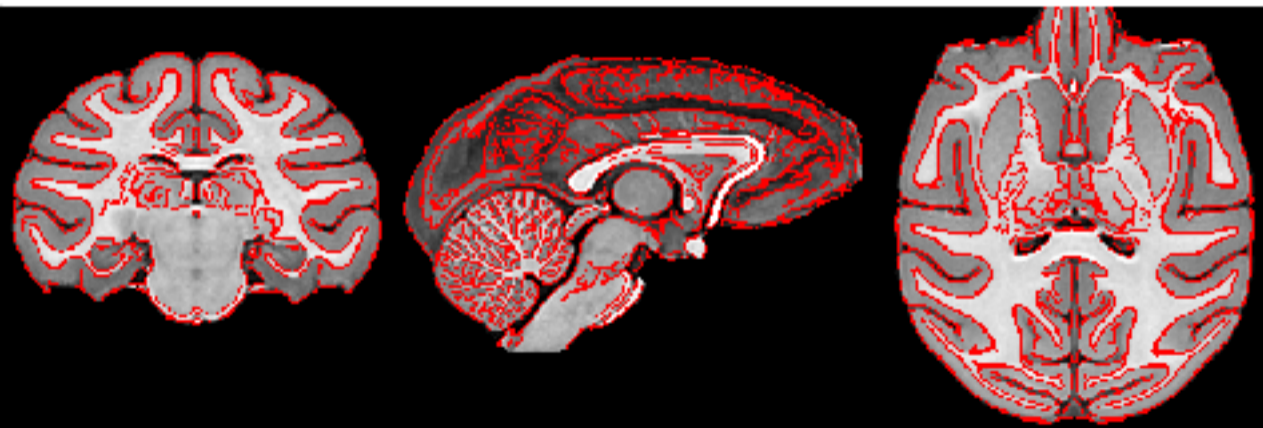
NMTv2.0\_stereo\_sym edges on INIA volume



NMTv2.0\_stereo\_sym edges on MNI volume



NMTv2.0\_stereo\_sym edges on NMTv2.0\_stereo\_asym volume



NMTv2.0\_stereo\_sym edges on YRK volume

