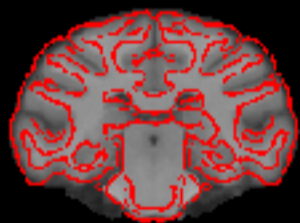
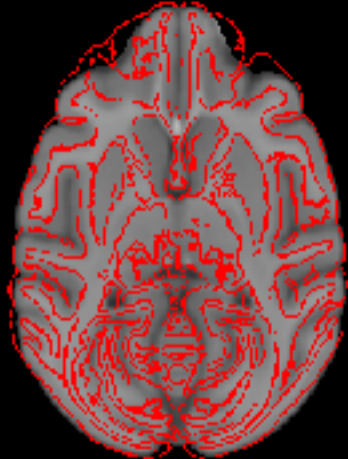
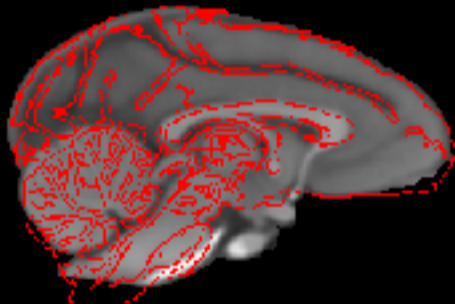
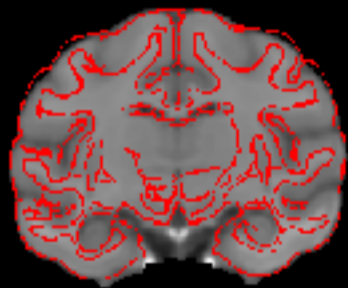


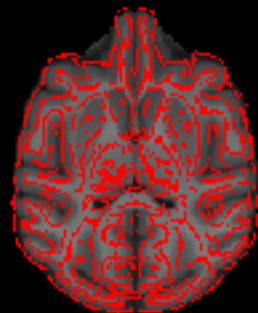
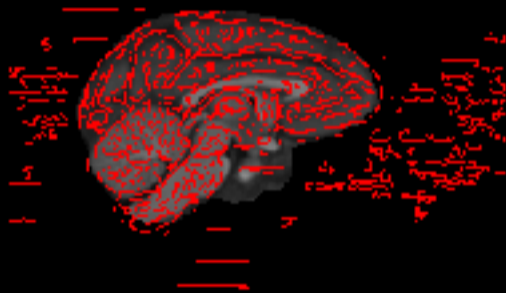
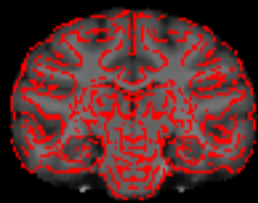
D99 edges on INIA volume



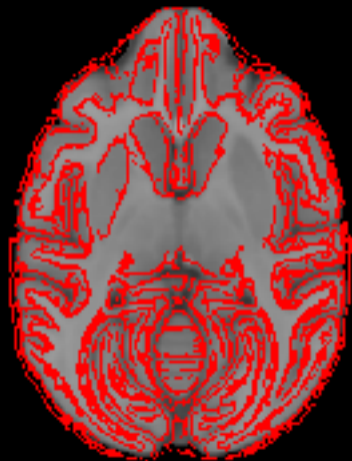
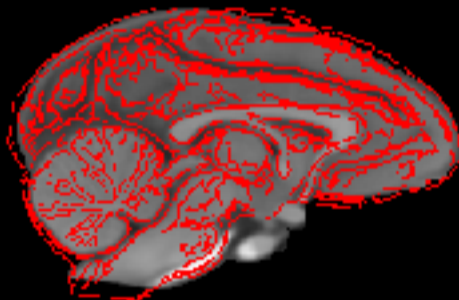
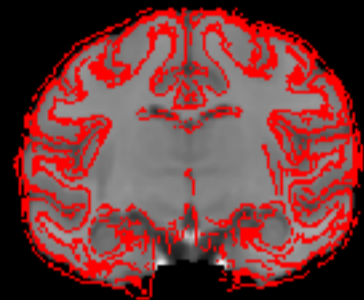
D99 edges on MNI volume



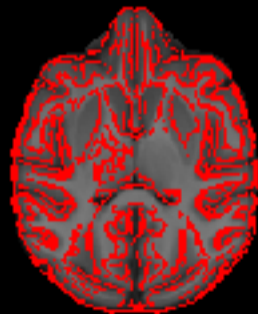
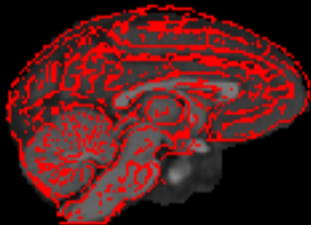
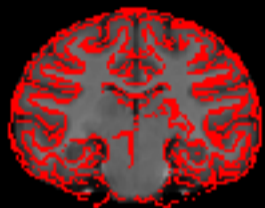
D99 edges on YRK volume



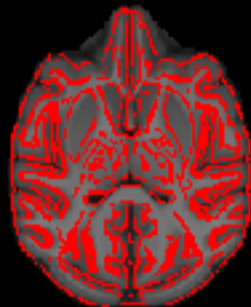
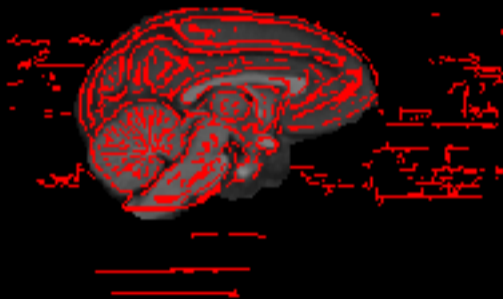
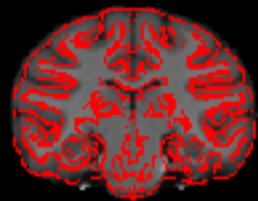
INIA edges on MNI volume



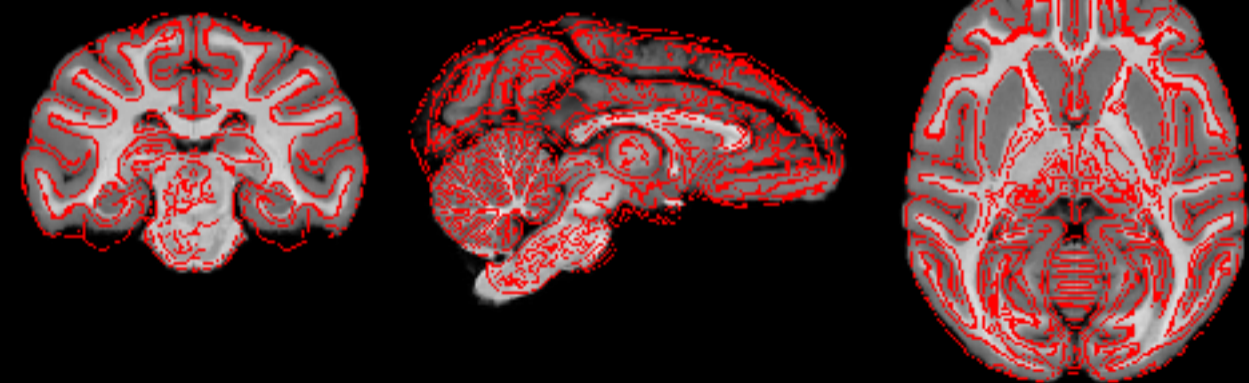
INIA edges on YRK volume



MNI edges on YRK volume



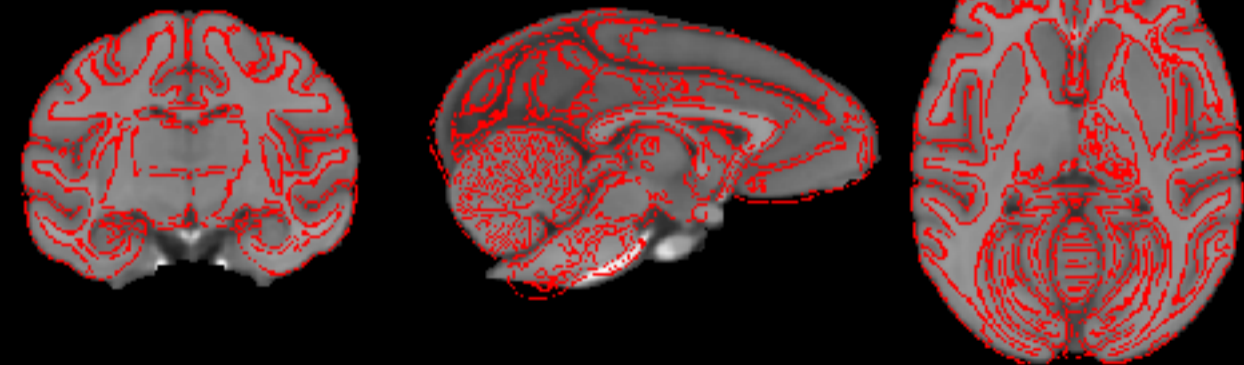
NMTv1.2 edges on D99 volume



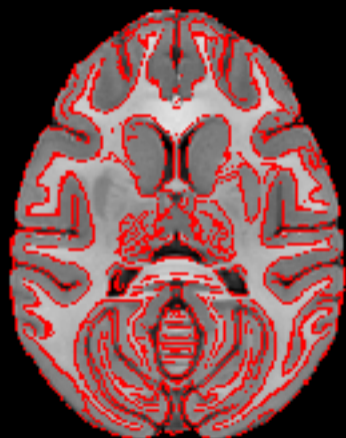
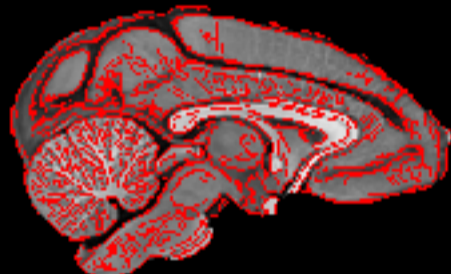
NMTv1.2 edges on INIA volume



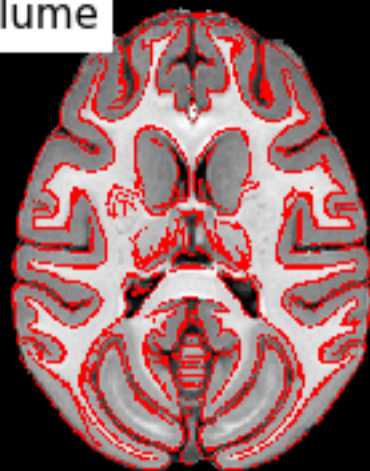
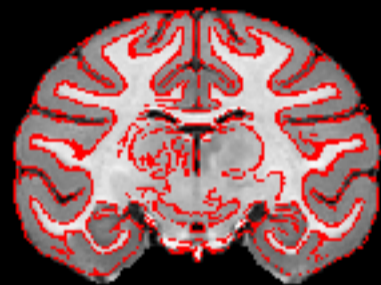
NMTv1.2 edges on MNI volume



NMTv1.2 edges on NMTv1.3 volume



NMTv1.2 edges on NMTv2.0_acpc_asym volume



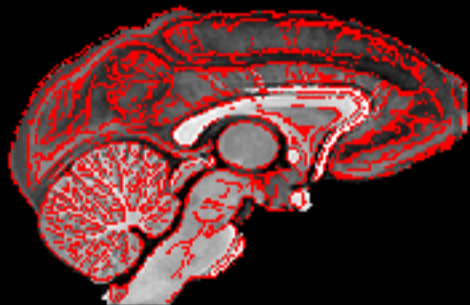
NMTv1.2 edges on NMTv2.0_acpc_sym volume



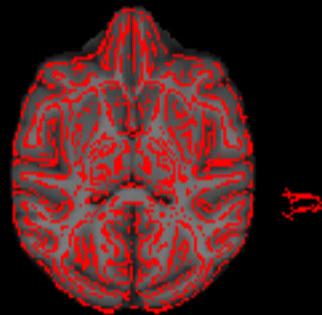
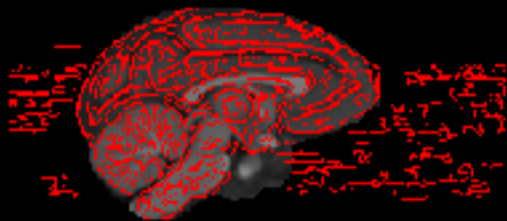
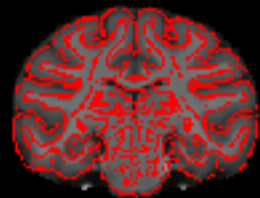
NMTv1.2 edges on NMTv2.0_stereo_asym volume



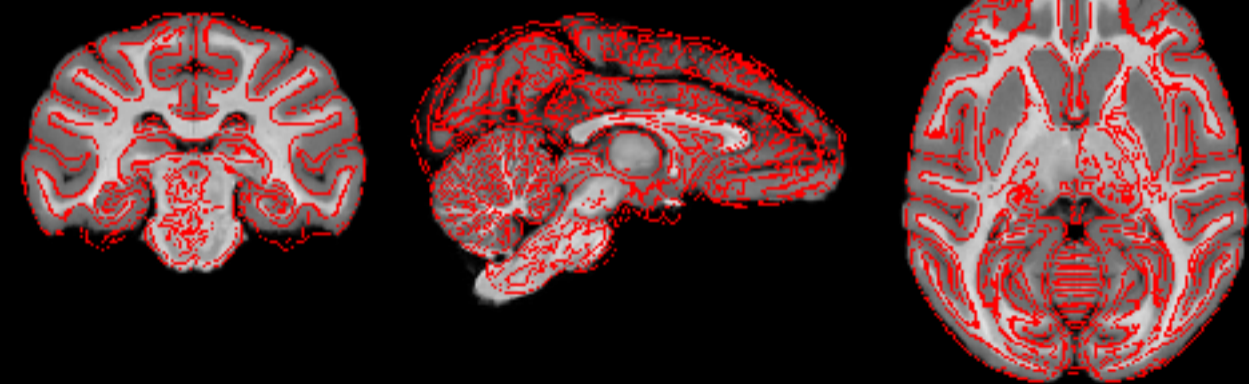
NMTv1.2 edges on NMTv2.0_stereo_sym volume



NMTv1.2 edges on YRK volume



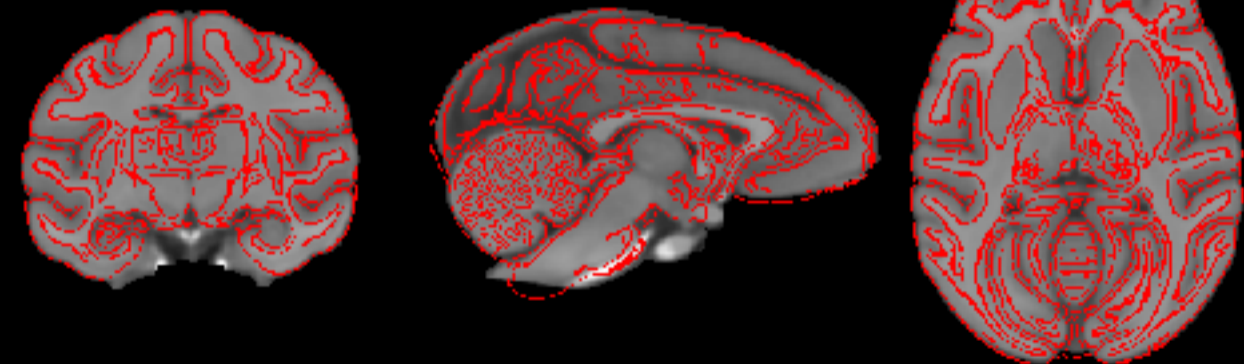
NMTv1.3 edges on D99 volume



NMTv1.3 edges on INIA volume



NMTv1.3 edges on MNI volume



NMTv1.3 edges on NMTv2.0_acpc_asym volume



NMTv1.3 edges on NMTv2.0_acpc_sym volume



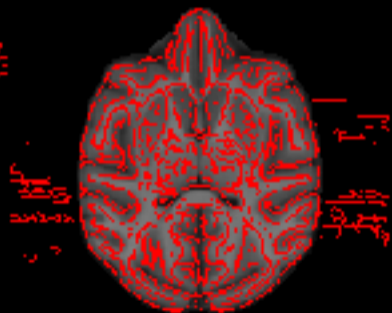
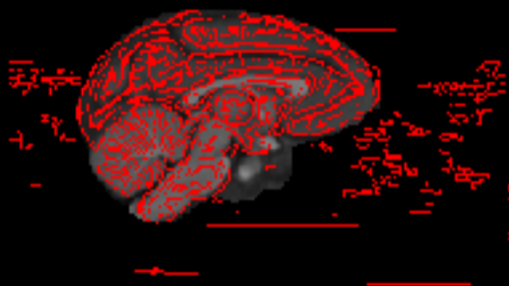
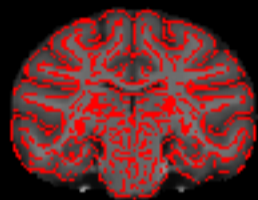
NMTv1.3 edges on NMTv2.0_stereo_asym volume



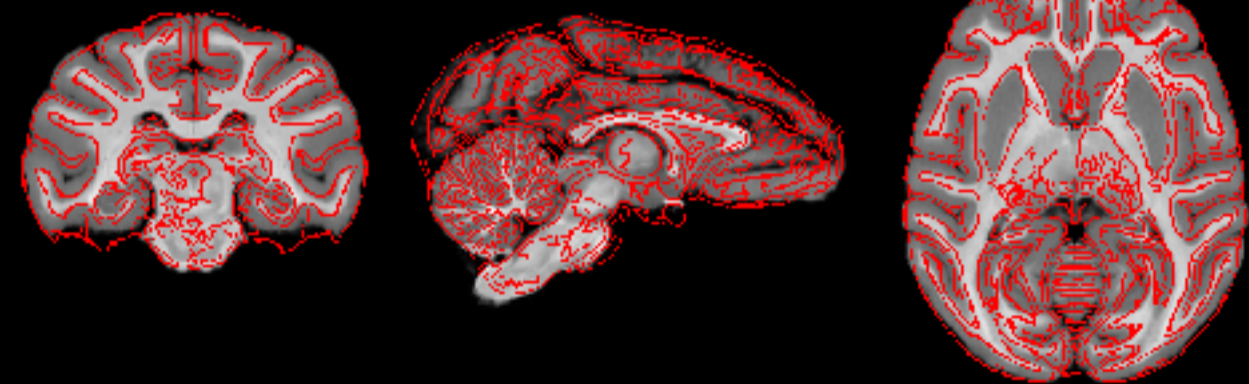
NMTv1.3 edges on NMTv2.0_stereo_sym volume



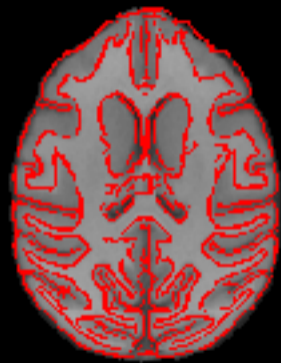
NMTv1.3 edges on YRK volume



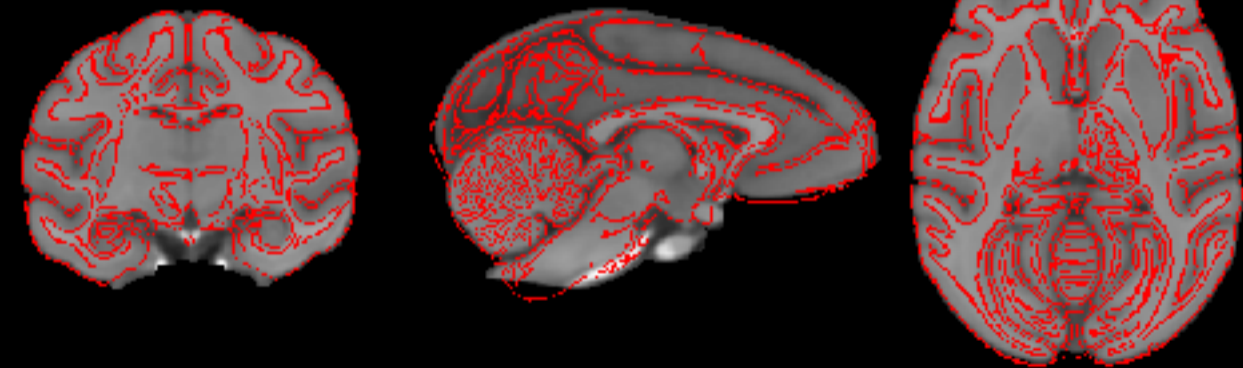
NMTv2.0_acpc_asym edges on D99 volume



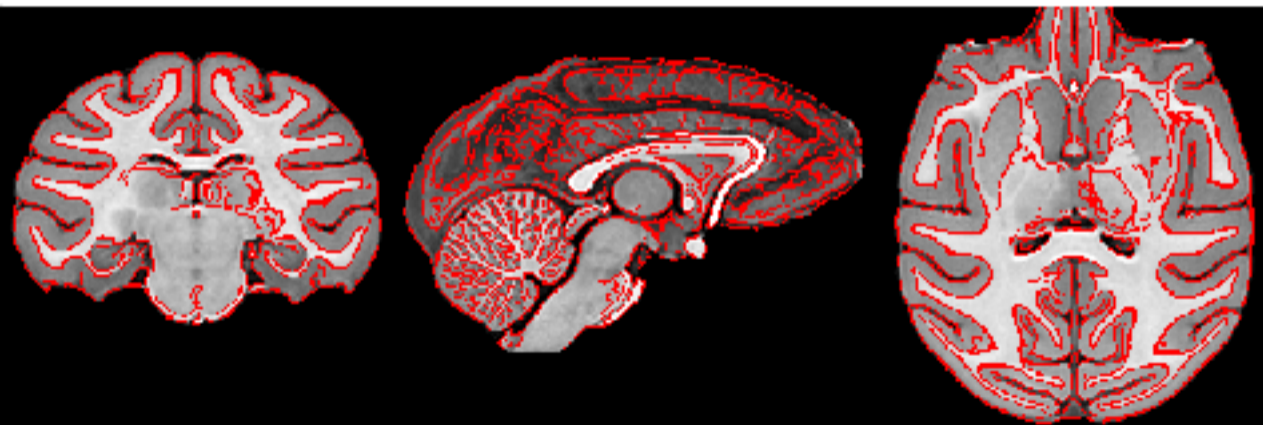
NMTv2.0_acpc_asym edges on INIA volume



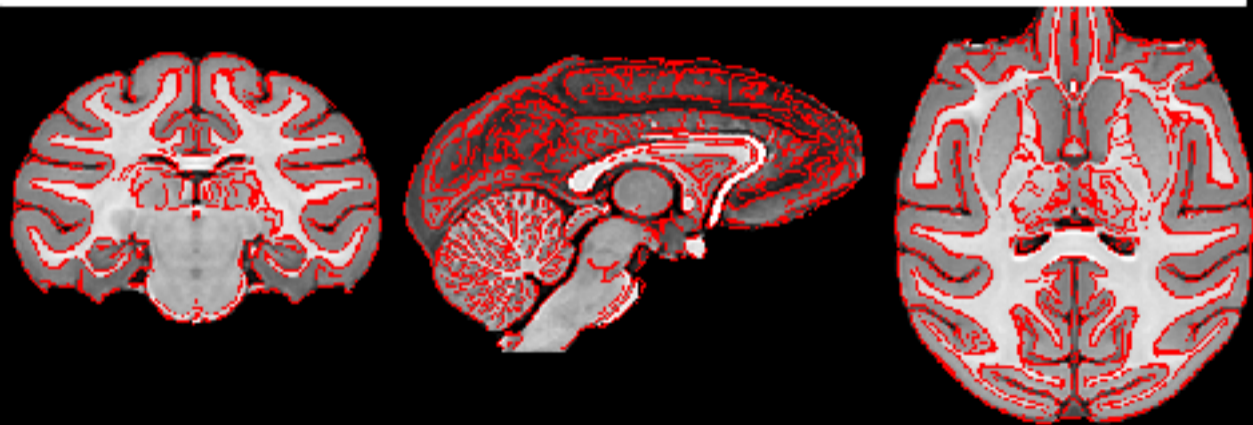
NMTv2.0_acpc_asym edges on MNI volume



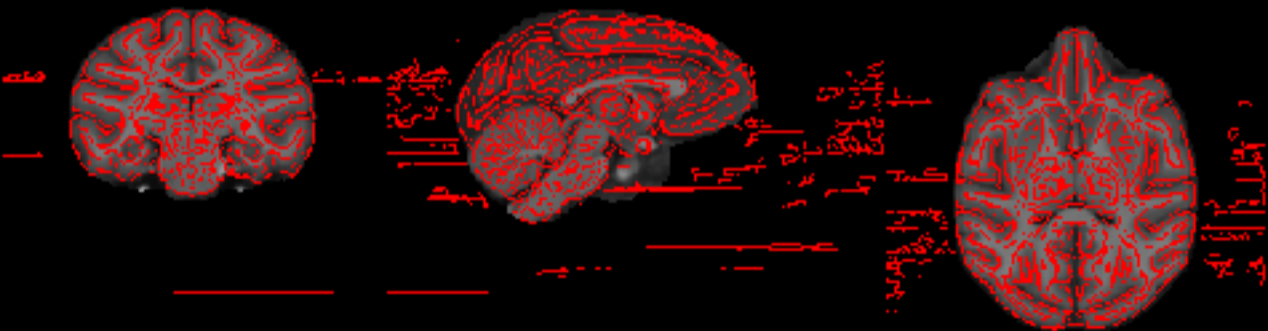
NMTv2.0_acpc_asym edges on NMTv2.0_stereo_asym volume



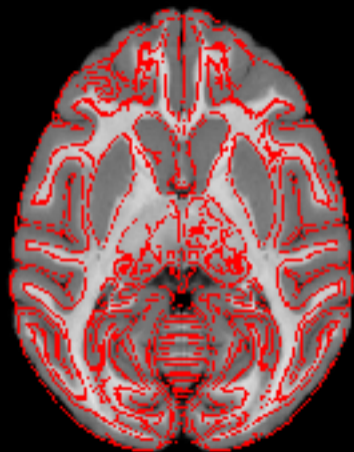
NMTv2.0_acpc_asym edges on NMTv2.0_stereo_sym volume



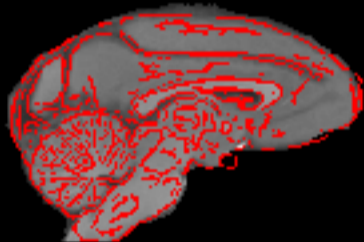
NMTv2.0_acpc_asym edges on YRK volume



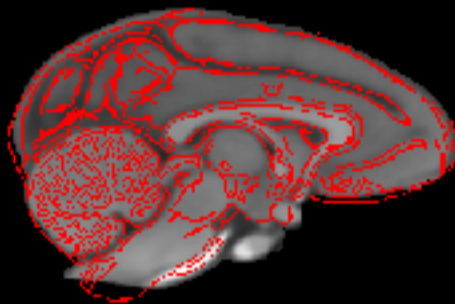
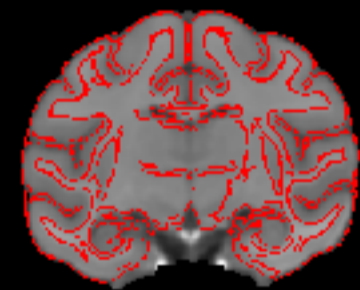
NMTv2.0_acpc_sym edges on D99 volume



NMTv2.0_acpc_sym edges on INIA volume



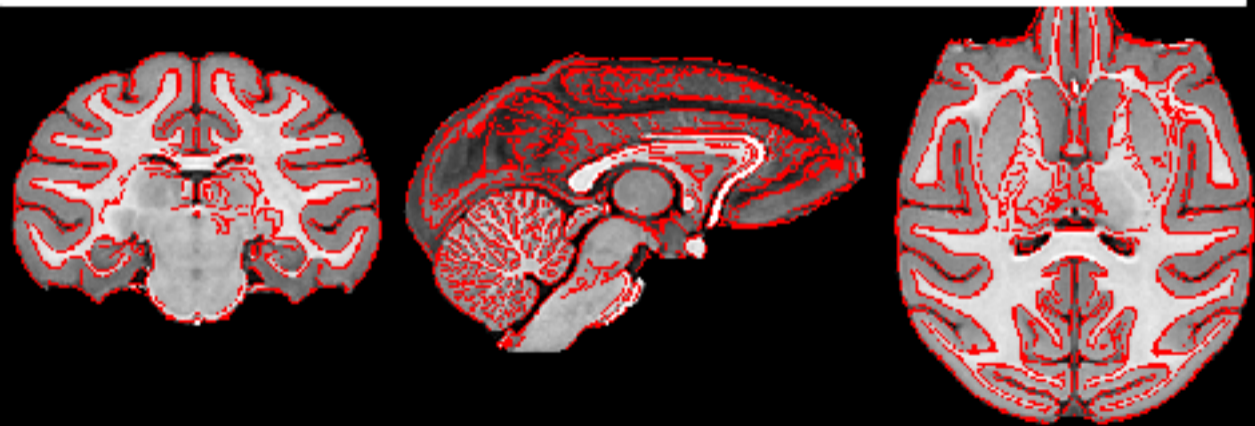
NMTv2.0_acpc_sym edges on MNI volume



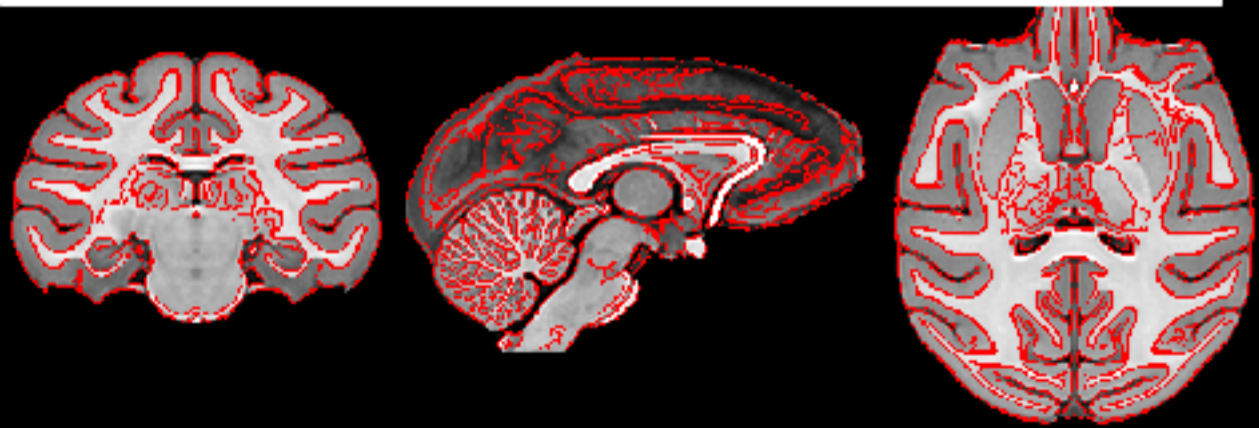
NMTv2.0_acpc_sym edges on NMTv2.0_acpc_asym volume



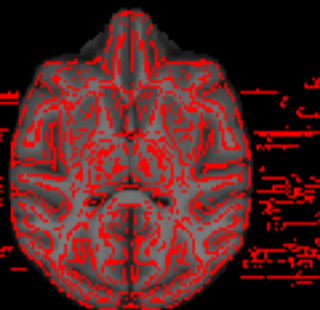
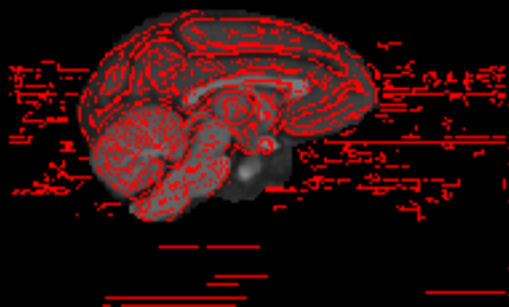
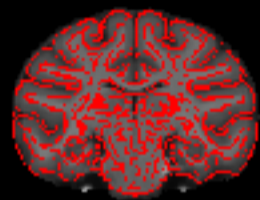
NMTv2.0_acpc_sym edges on NMTv2.0_stereo_asym volume



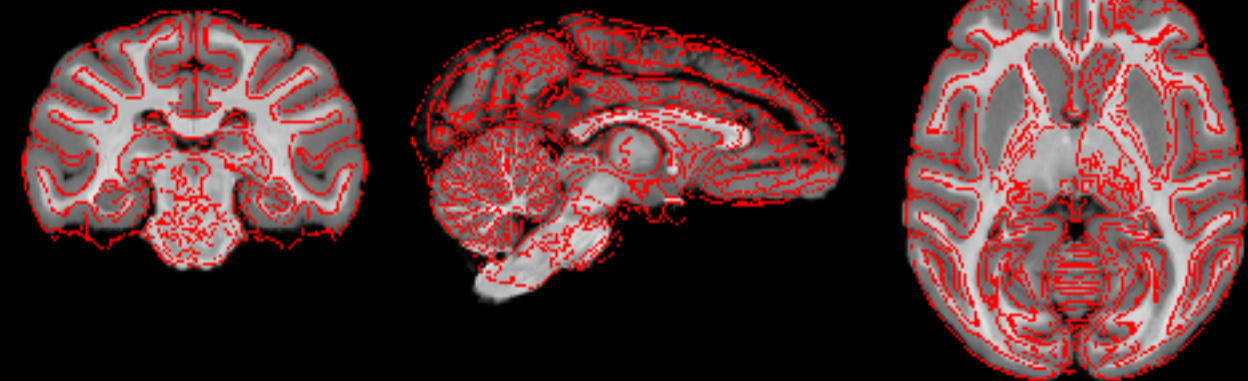
NMTv2.0_acpc_sym edges on NMTv2.0_stereo_sym volume



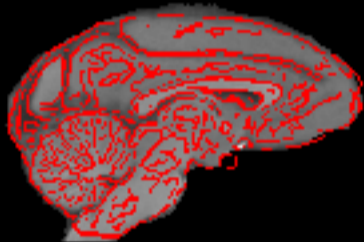
NMTv2.0_acpc_sym edges on YRK volume



NMTv2.0_stereo_asym edges on D99 volume



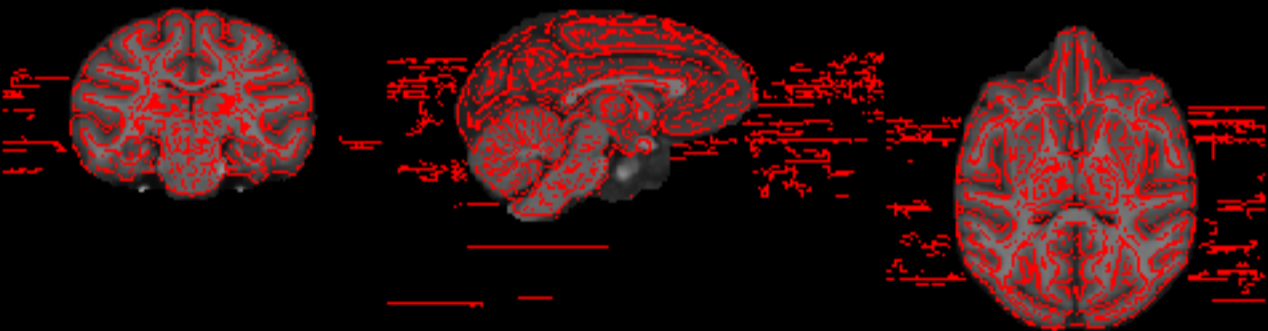
NMTv2.0_stereo_asym edges on INIA volume



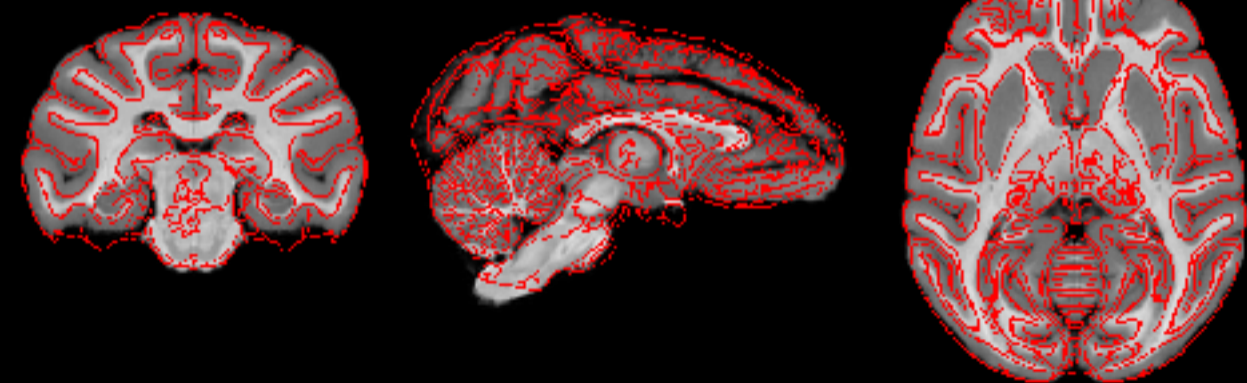
NMTv2.0_stereo_asym edges on MNI volume



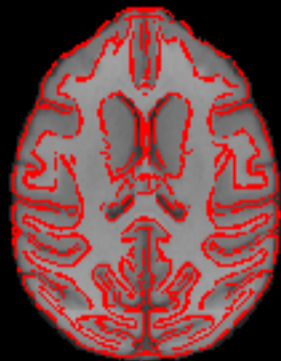
NMTv2.0_stereo_asym edges on YRK volume



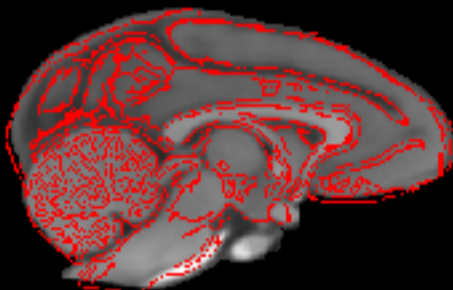
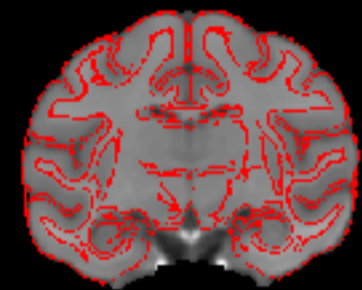
NMTv2.0_stereo_sym edges on D99 volume



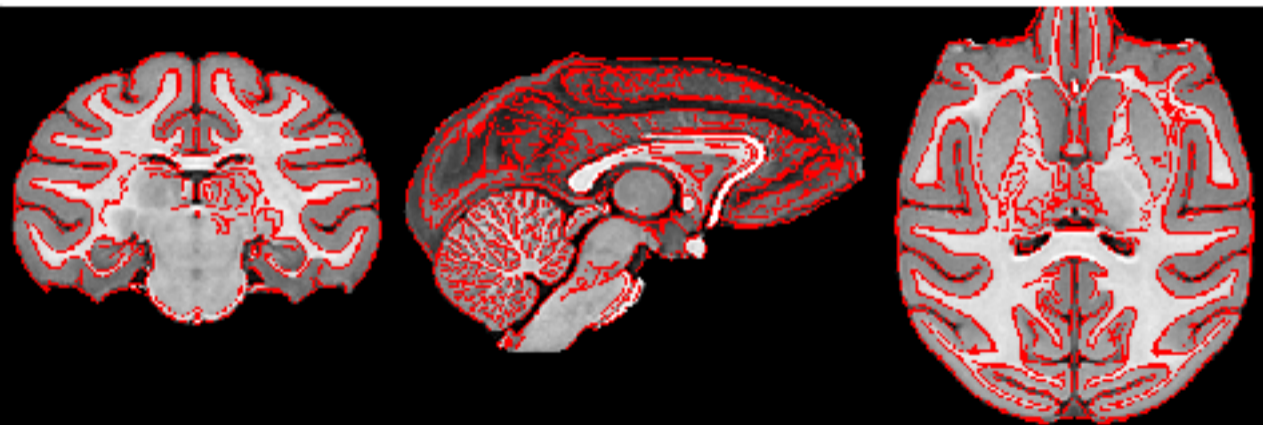
NMTv2.0_stereo_sym edges on INIA volume



NMTv2.0_stereo_sym edges on MNI volume



NMTv2.0_stereo_sym edges on NMTv2.0_stereo_asym volume



NMTv2.0_stereo_sym edges on YRK volume

