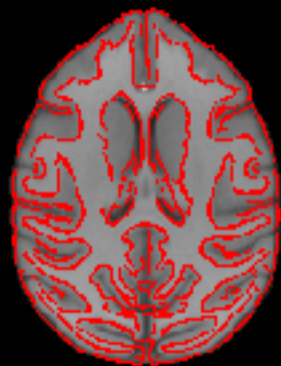
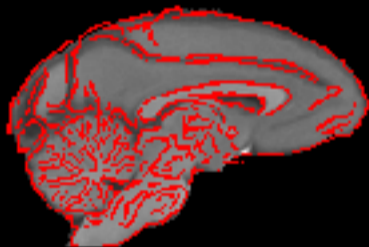


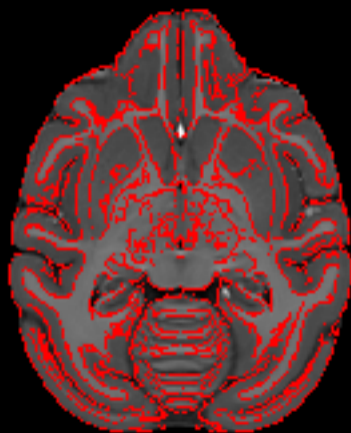
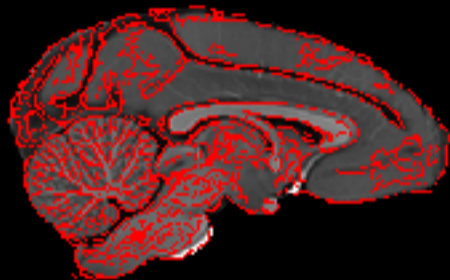
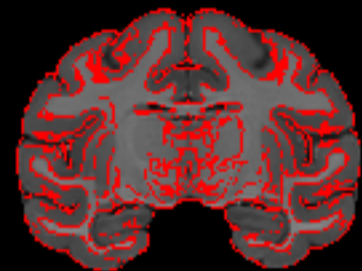
D99 edges on INIA volume



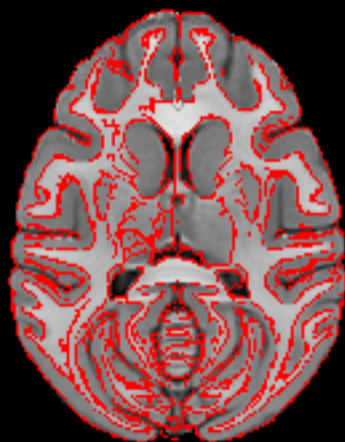
D99 edges on MNI volume



D99 edges on NMTv1.2 volume



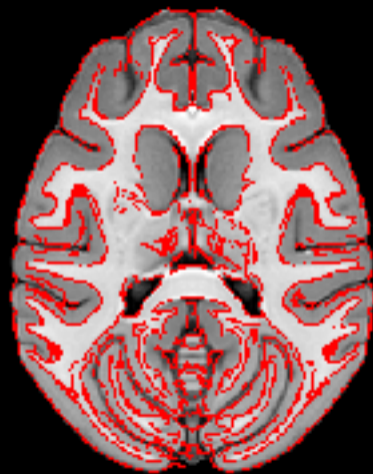
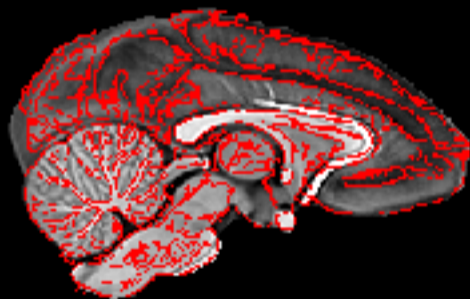
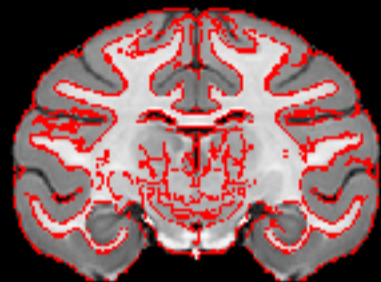
D99 edges on NMTv1.3 volume



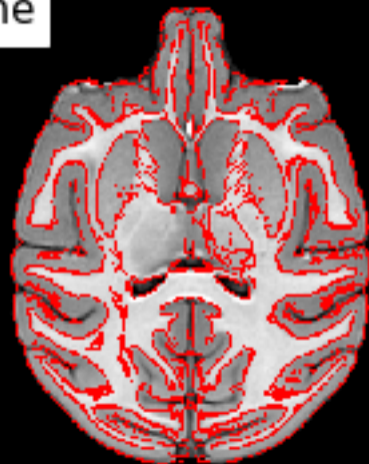
D99 edges on NMTv2.0\_acpc\_asym volume



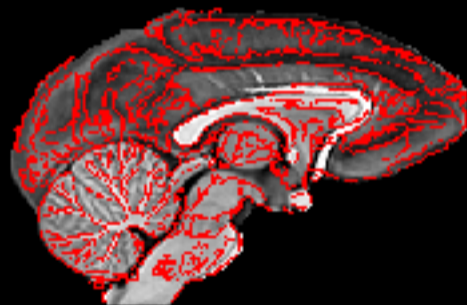
D99 edges on NMTv2.0\_acpc\_sym volume



D99 edges on NMTv2.0\_stereo\_asym volume

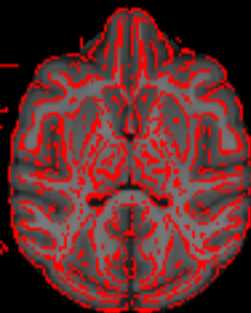
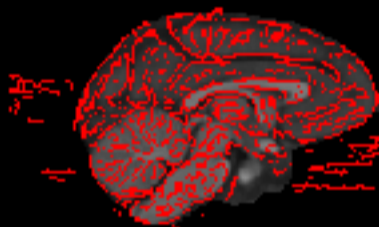
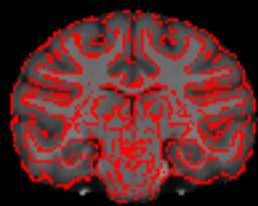


D99 edges on NMTv2.0\_stereo\_sym volume

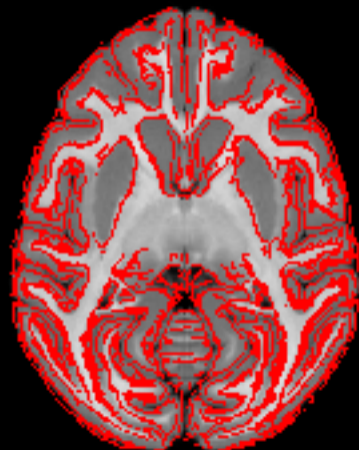
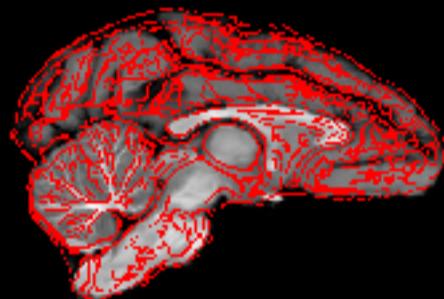




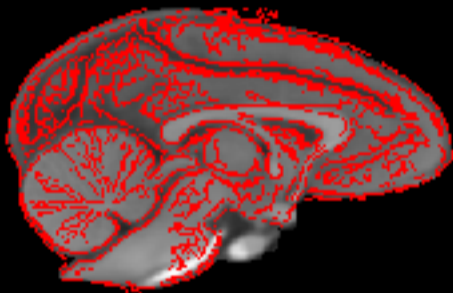
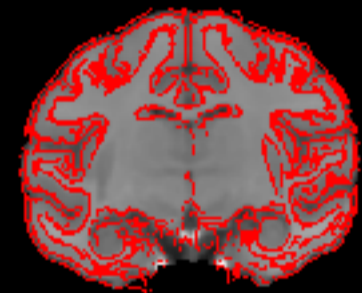
# D99 edges on YRK volume



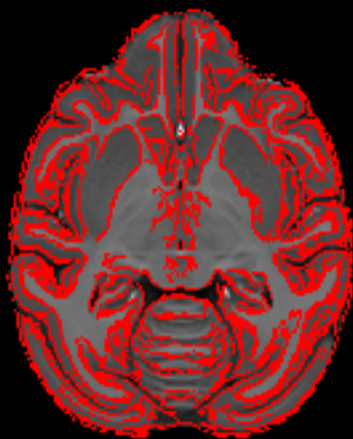
INIA edges on D99 volume



# INIA edges on MNI volume



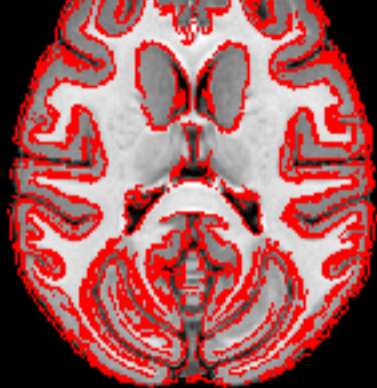
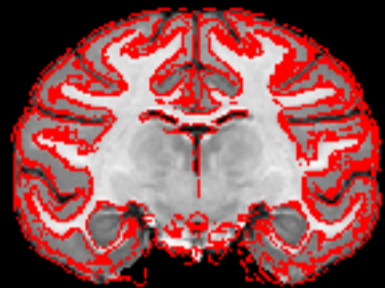
INIA edges on NMTv1.2 volume



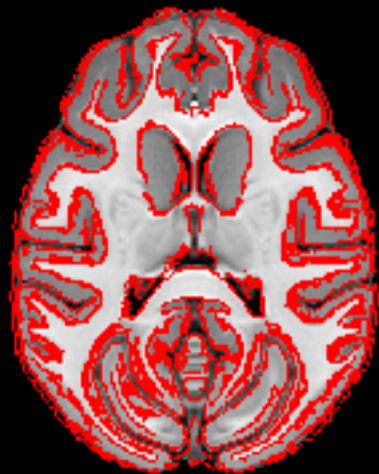
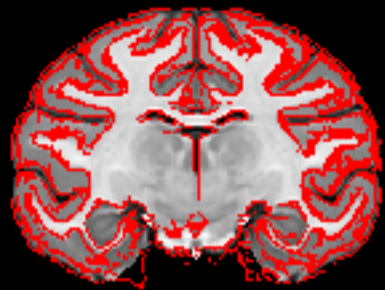
INIA edges on NMTv1.3 volume



INIA edges on NMTv2.0\_acpc\_asym volume



INIA edges on NMTv2.0\_acpc\_sym volume

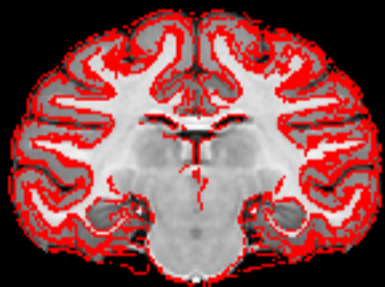


INIA edges on NMTv2.0\_stereo\_asym volume

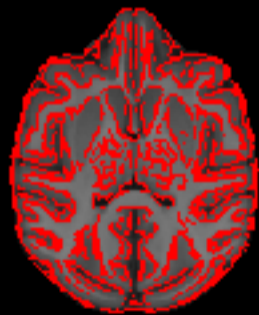
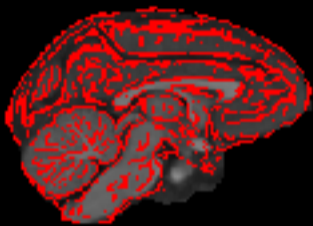
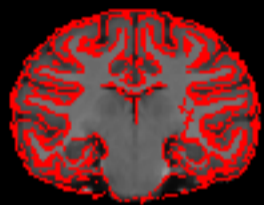




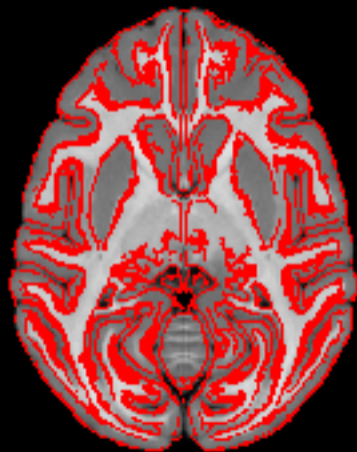
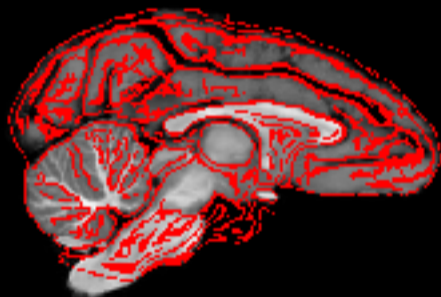
INIA edges on NMTv2.0\_stereo\_sym volume



# INIA edges on YRK volume



MNI edges on D99 volume



# MNI edges on INIA volume



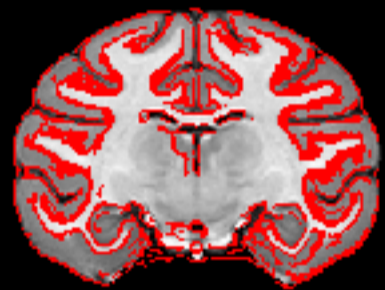
MNI edges on NMTv1.2 volume



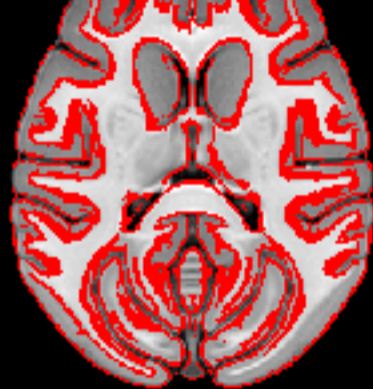
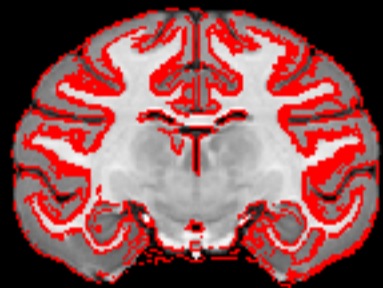
MNI edges on NMTv1.3 volume



MNI edges on NMTv2.0\_acpc\_asym volume



MNI edges on NMTv2.0\_acpc\_sym volume





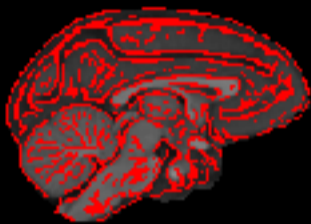
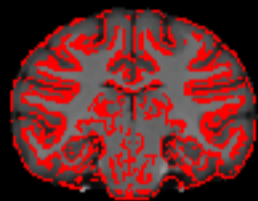
MNI edges on NMTv2.0\_stereo\_asym volume



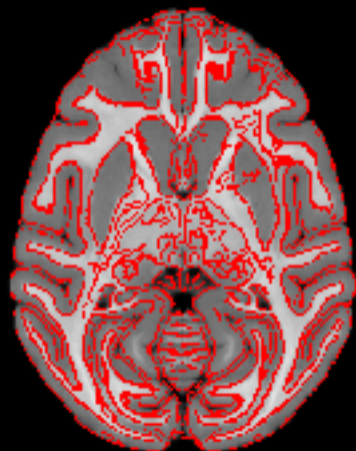
MNI edges on NMTv2.0\_stereo\_sym volume



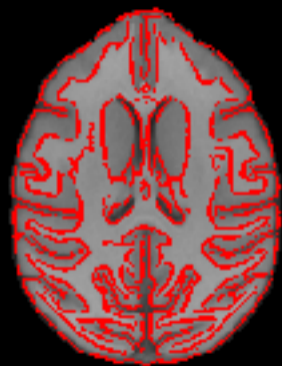
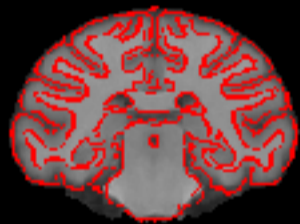
# MNI edges on YRK volume



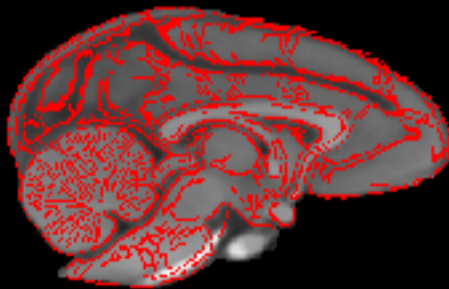
NMTv1.2 edges on D99 volume



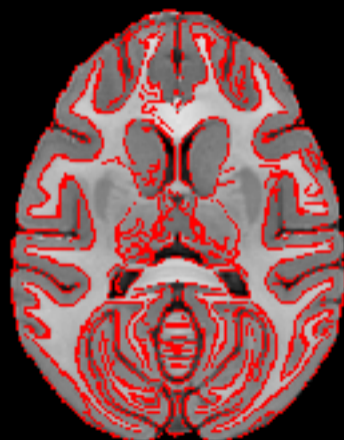
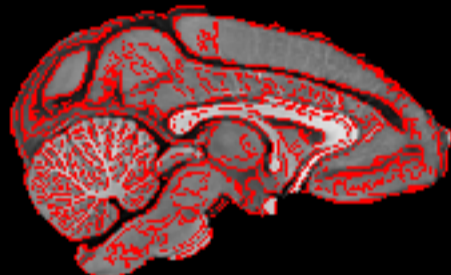
NMTv1.2 edges on INIA volume



NMTv1.2 edges on MNI volume



NMTv1.2 edges on NMTv1.3 volume

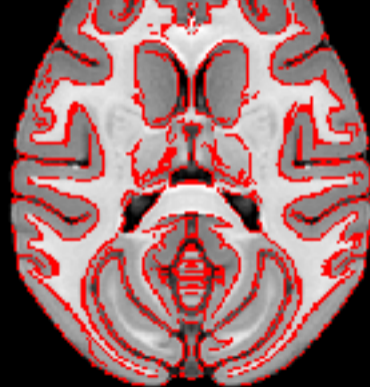


NMTv1.2 edges on NMTv2.0\_acpc\_asym volume





NMTv1.2 edges on NMTv2.0\_acpc\_sym volume



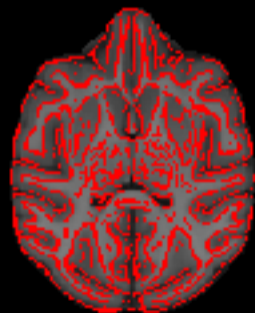
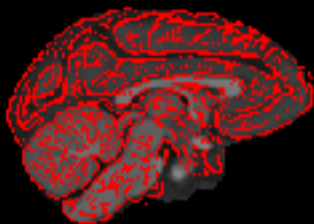
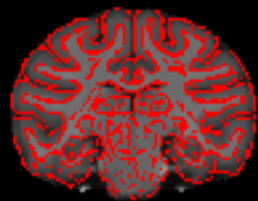
NMTv1.2 edges on NMTv2.0\_stereo\_asym volume



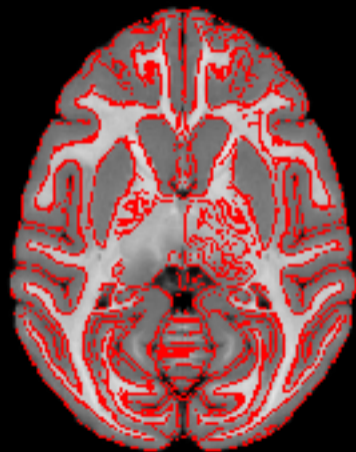
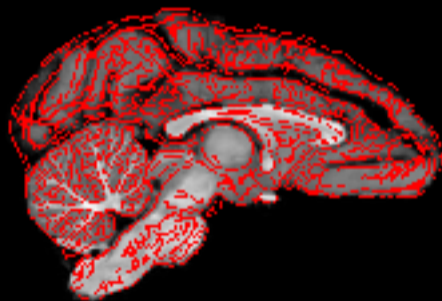
NMTv1.2 edges on NMTv2.0\_stereo\_sym volume



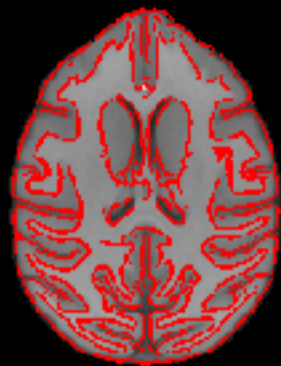
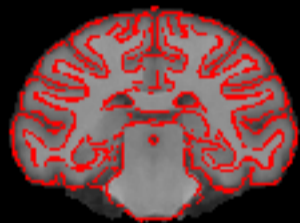
# NMTv1.2 edges on YRK volume



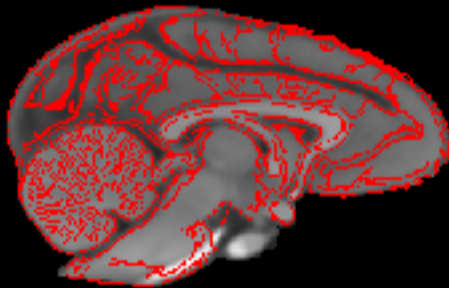
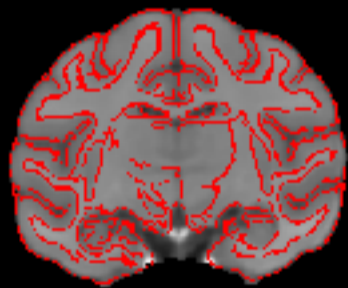
NMTv1.3 edges on D99 volume



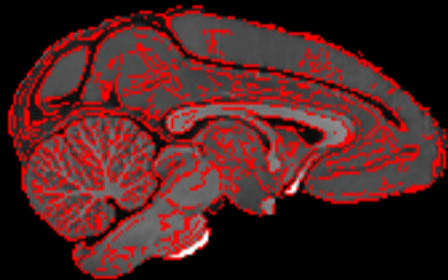
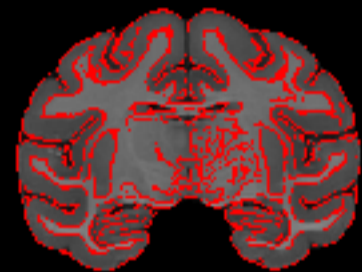
NMTv1.3 edges on INIA volume



NMTv1.3 edges on MNI volume

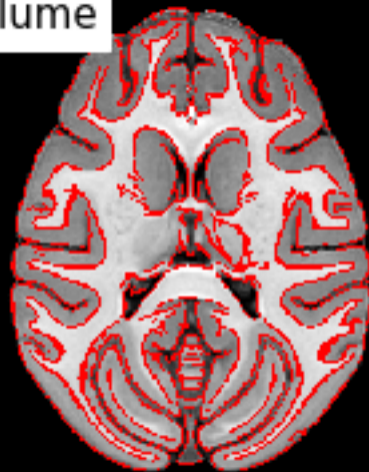


NMTv1.3 edges on NMTv1.2 volume





NMTv1.3 edges on NMTv2.0\_acpc\_asym volume



NMTv1.3 edges on NMTv2.0\_acpc\_sym volume



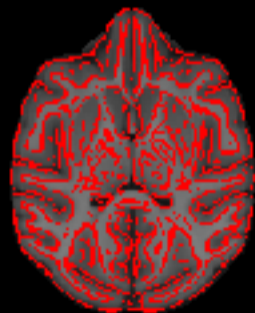
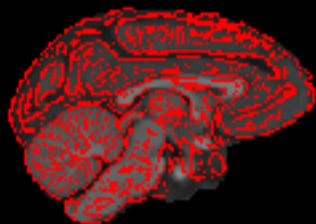
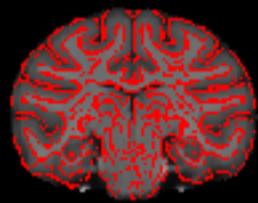
NMTv1.3 edges on NMTv2.0\_stereo\_asym volume



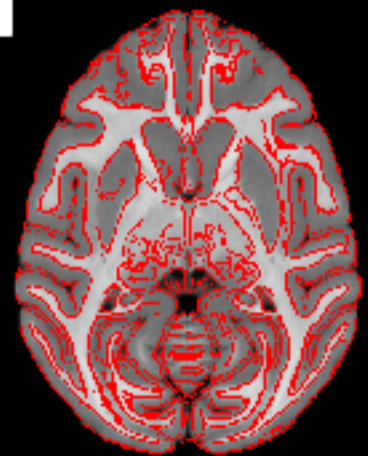
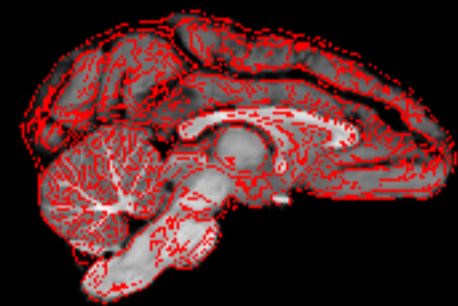
NMTv1.3 edges on NMTv2.0\_stereo\_sym volume



# NMTv1.3 edges on YRK volume



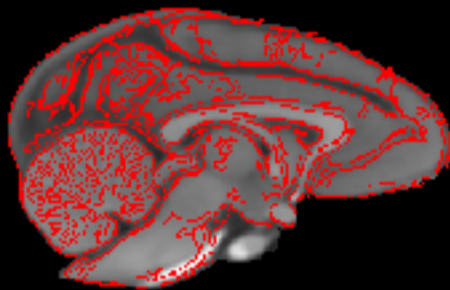
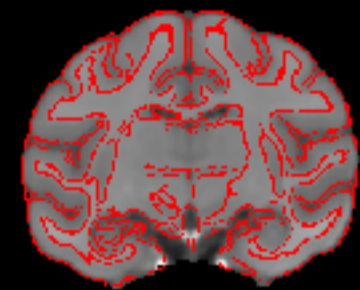
NMTv2.0\_acpc\_asym edges on D99 volume



NMTv2.0\_acpc\_asym edges on INIA volume

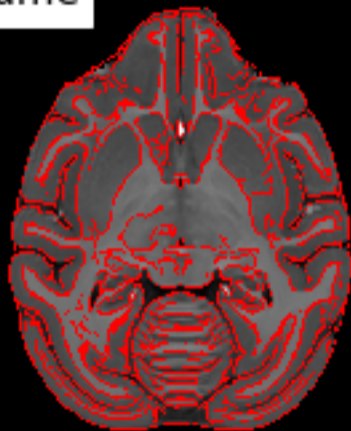
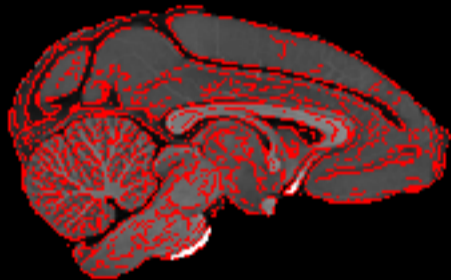
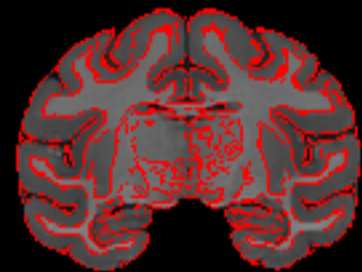


NMTv2.0\_acpc\_asym edges on MNI volume





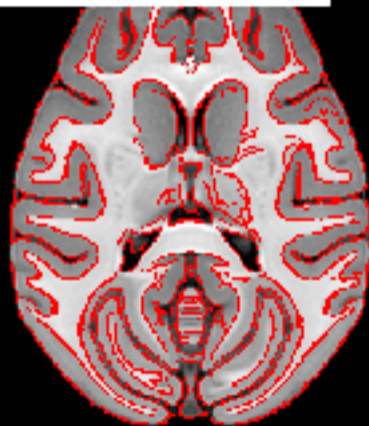
NMTv2.0\_acpc\_asym edges on NMTv1.2 volume



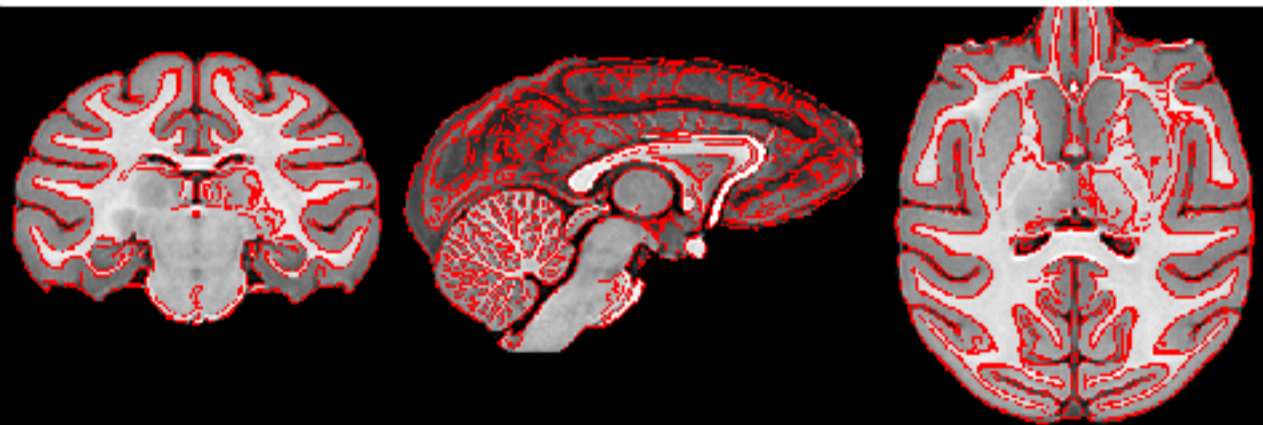
NMTv2.0\_acpc\_asym edges on NMTv1.3 volume



NMTv2.0\_acpc\_asym edges on NMTv2.0\_acpc\_sym volume



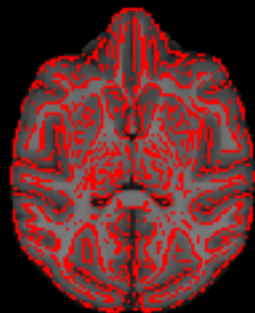
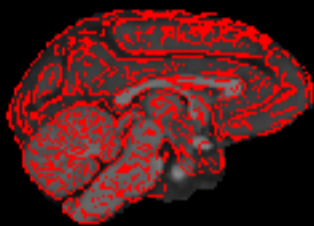
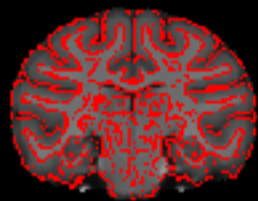
NMTv2.0\_acpc\_asym edges on NMTv2.0\_stereo\_asym volume



NMTv2.0\_acpc\_asym edges on NMTv2.0\_stereo\_sym volume



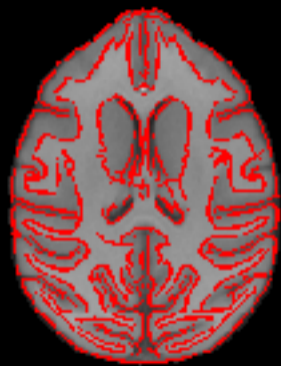
NMTv2.0\_acpc\_asym edges on YRK volume



NMTv2.0\_acpc\_sym edges on D99 volume

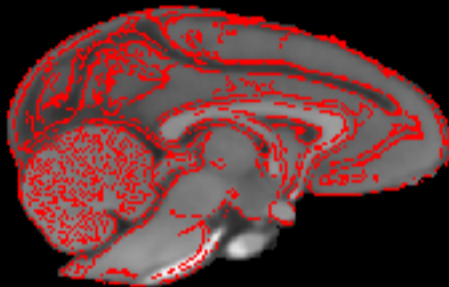
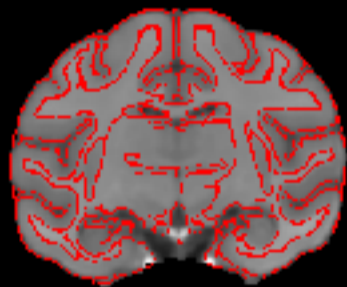


NMTv2.0\_acpc\_sym edges on INIA volume

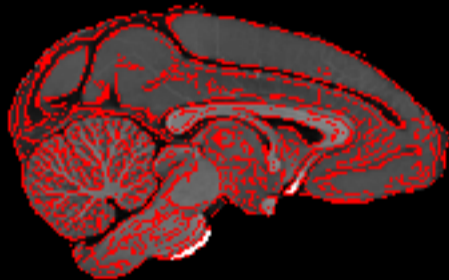




NMTv2.0\_acpc\_sym edges on MNI volume



NMTv2.0\_acpc\_sym edges on NMTv1.2 volume



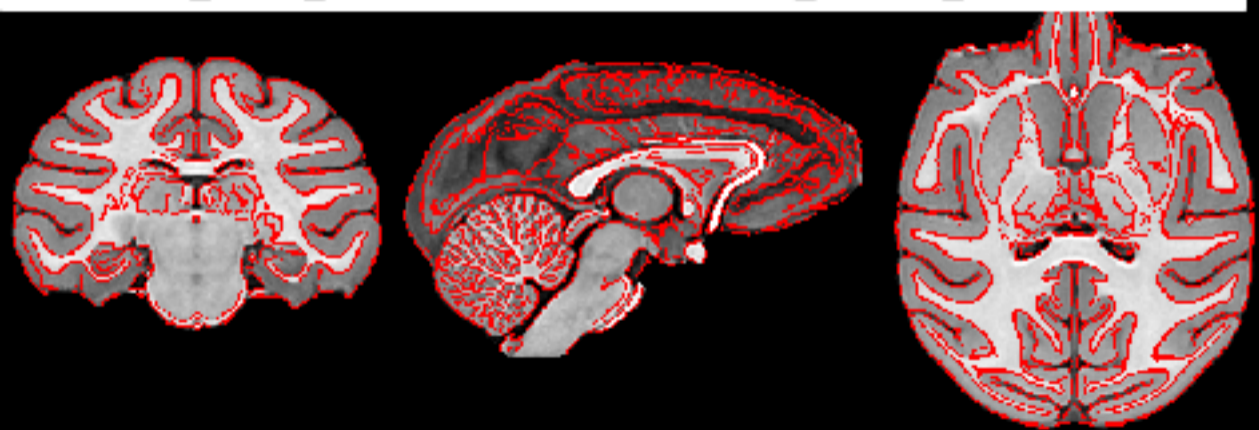
NMTv2.0\_acpc\_sym edges on NMTv1.3 volume



NMTv2.0\_acpc\_sym edges on NMTv2.0\_acpc\_asym volume



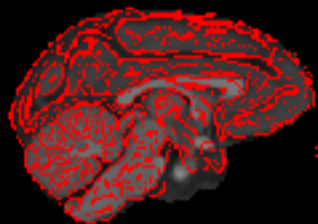
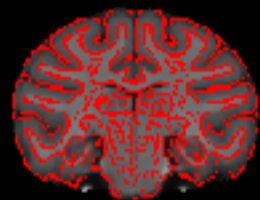
NMTv2.0\_acpc\_sym edges on NMTv2.0\_stereo\_asym volume



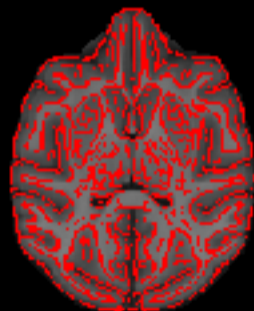
NMTv2.0\_acpc\_sym edges on NMTv2.0\_stereo\_sym volume



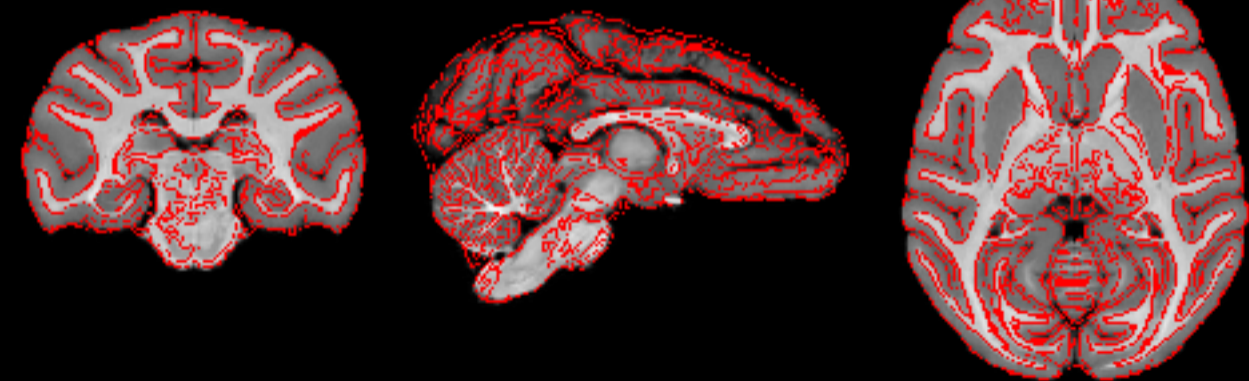
# NMTv2.0\_acpc\_sym edges on YRK volume



100  
50  
0  
-50  
-100

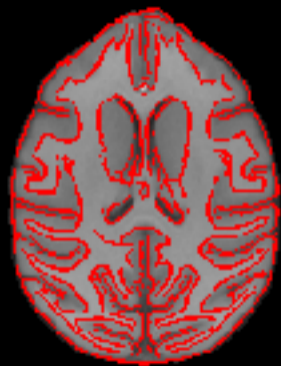


NMTv2.0\_stereo\_asym edges on D99 volume

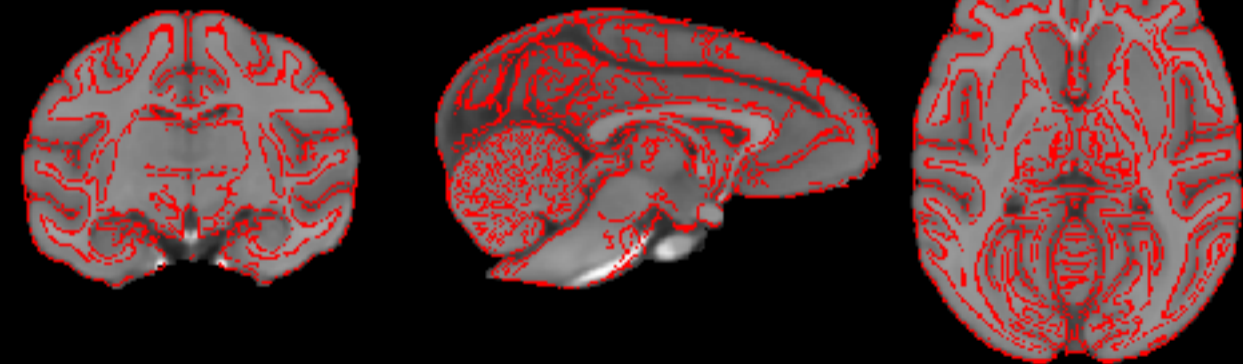




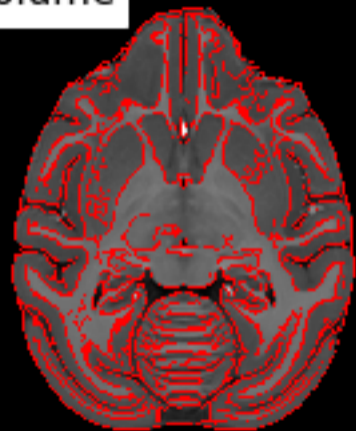
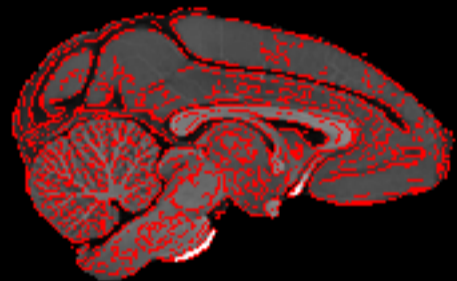
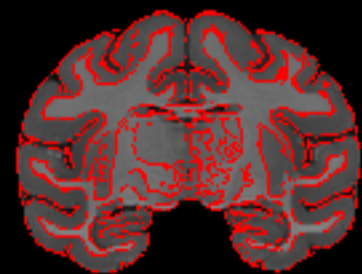
NMTv2.0\_stereo\_asym edges on INIA volume



NMTv2.0\_stereo\_asym edges on MNI volume



NMTv2.0\_stereo\_asym edges on NMTv1.2 volume



NMTv2.0\_stereo\_asym edges on NMTv1.3 volume



NMTv2.0\_stereo\_asym edges on NMTv2.0\_acpc\_asym volume



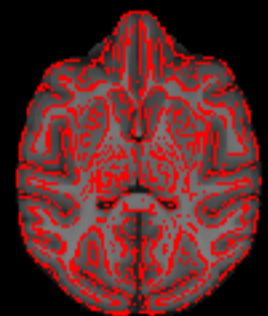
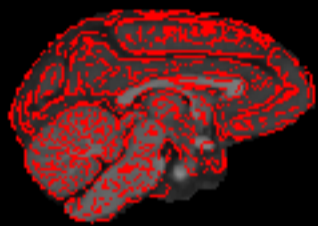
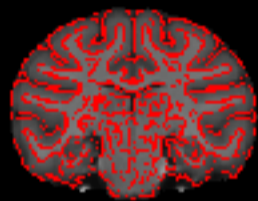
NMTv2.0\_stereo\_asym edges on NMTv2.0\_acpc\_sym volume



NMTv2.0\_stereo\_asym edges on NMTv2.0\_stereo\_sym volume

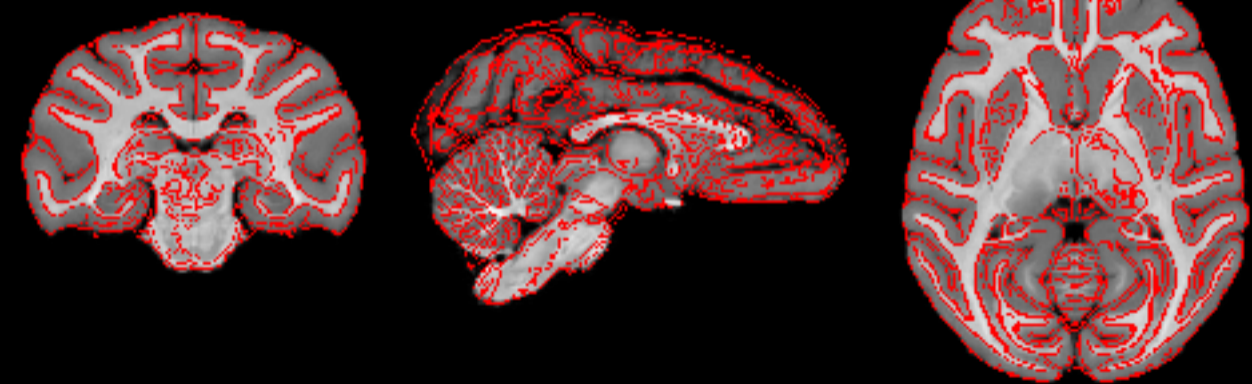


NMTv2.0\_stereo\_asym edges on YRK volume

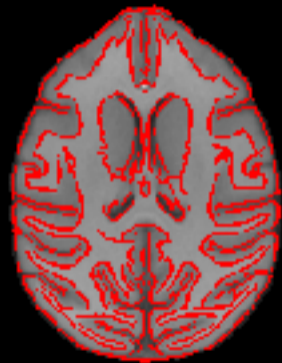




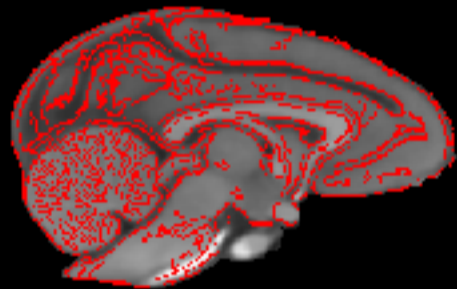
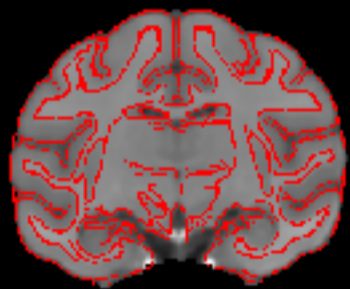
NMTv2.0\_stereo\_sym edges on D99 volume



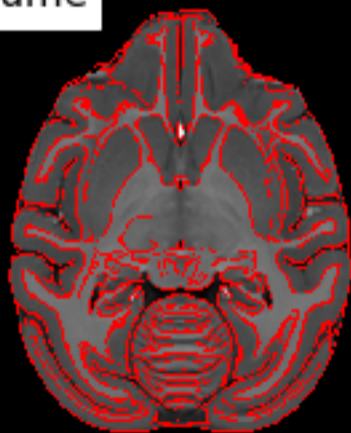
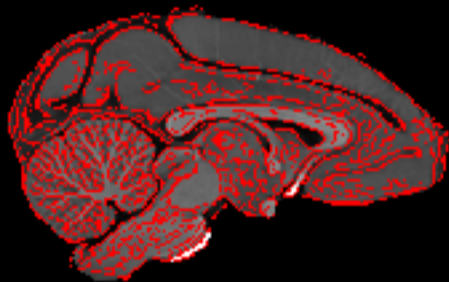
NMTv2.0\_stereo\_sym edges on INIA volume



NMTv2.0\_stereo\_sym edges on MNI volume



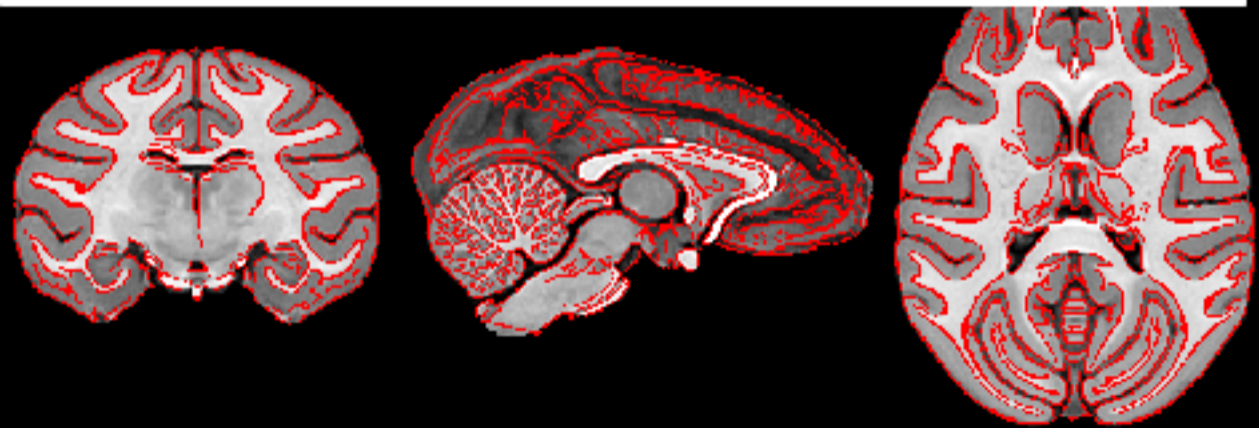
NMTv2.0\_stereo\_sym edges on NMTv1.2 volume



NMTv2.0\_stereo\_sym edges on NMTv1.3 volume



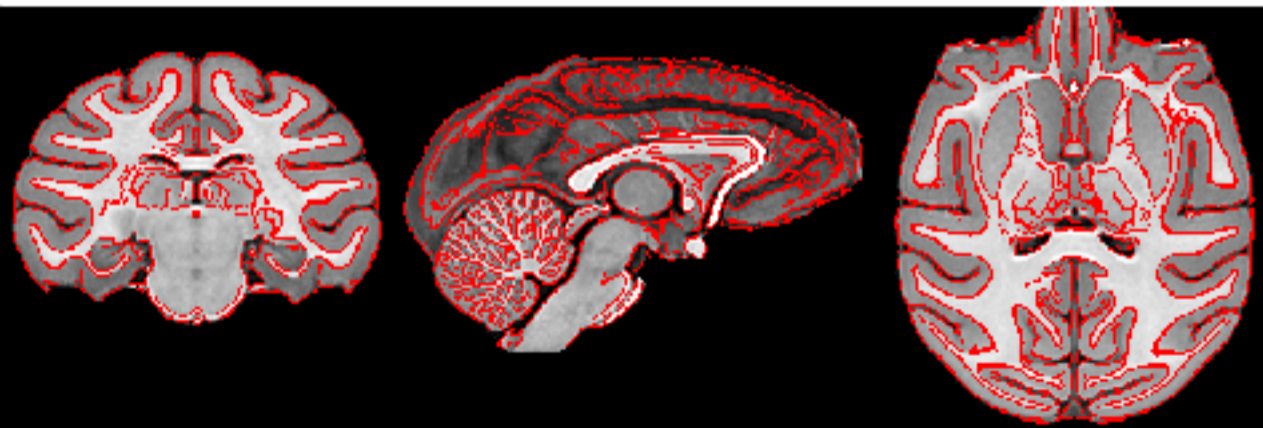
NMTv2.0\_stereo\_sym edges on NMTv2.0\_acpc\_asym volume



NMTv2.0\_stereo\_sym edges on NMTv2.0\_acpc\_sym volume

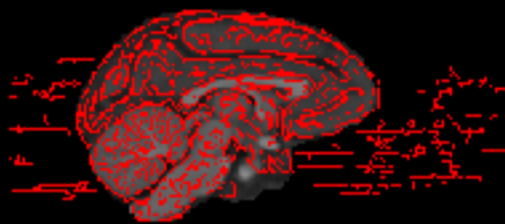


NMTv2.0\_stereo\_sym edges on NMTv2.0\_stereo\_asym volume

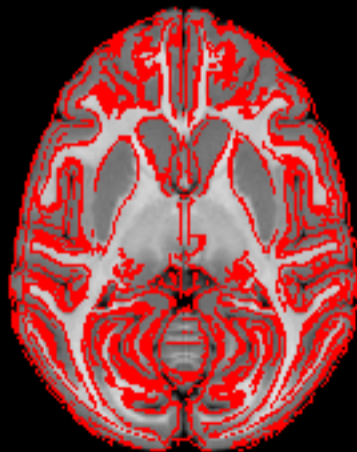




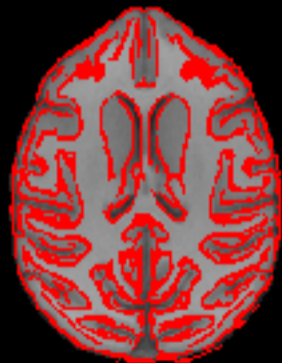
# NMTv2.0\_stereo\_sym edges on YRK volume



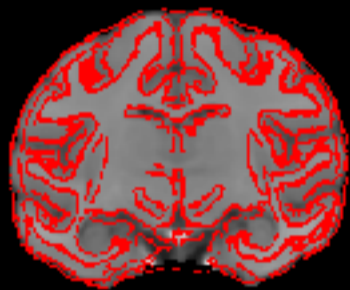
YRK edges on D99 volume



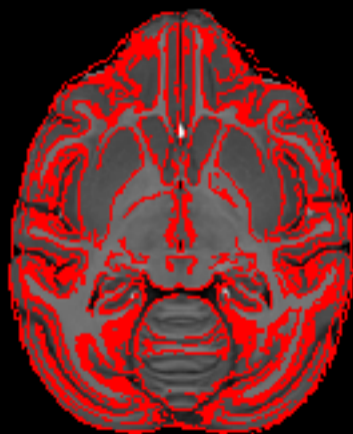
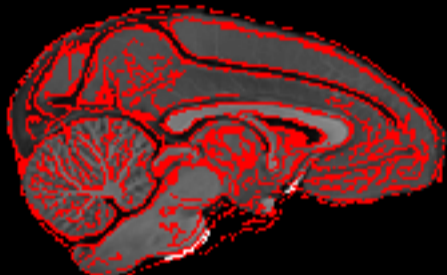
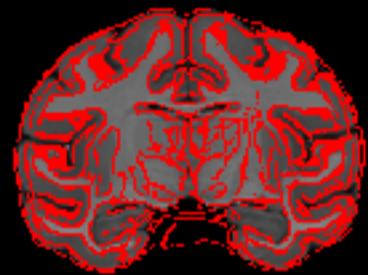
# YRK edges on INIA volume



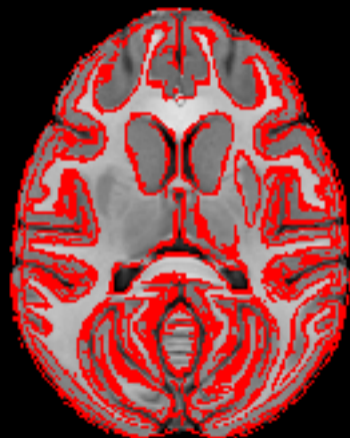
YRK edges on MNI volume



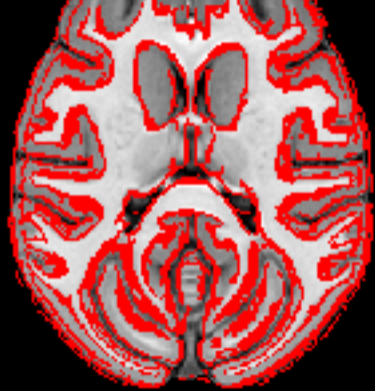
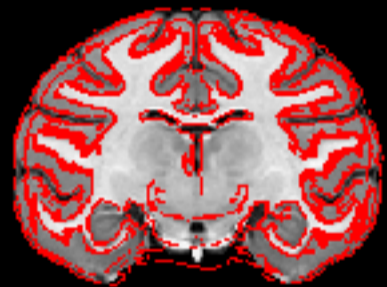
YRK edges on NMTv1.2 volume



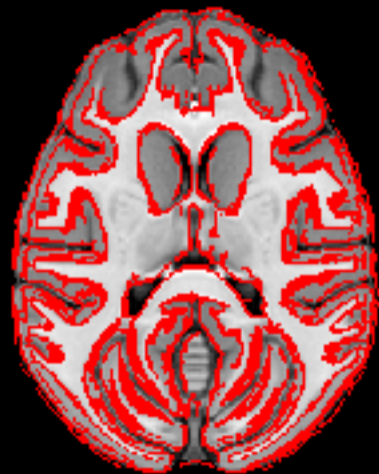
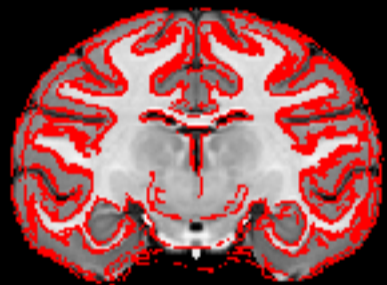
YRK edges on NMTv1.3 volume



YRK edges on NMTv2.0\_acpc\_asym volume

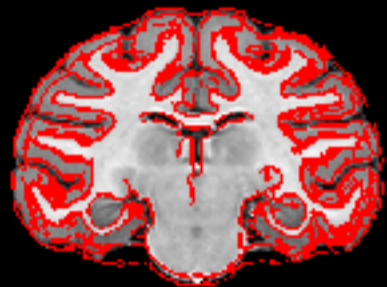


YRK edges on NMTv2.0\_acpc\_sym volume





YRK edges on NMTv2.0\_stereo\_asym volume



YRK edges on NMTv2.0\_stereo\_sym volume

