



TERRA POPULUS

Integrated Data on Population and Environment



Workshop Outline

- TerraPop project overview
- Raster to area transformations
- Tutorial 1 – Area-level extract
- Microdata
 - Attaching contextual variables
 - Microdata geography
- Tutorials 2 & 3 – Microdata extract & analysis
- Area to raster transformations
- Tutorial 4 – Mapping TerraPop data (optional)
- Q & A



TerraPop Goals

Lower barriers to conducting **interdisciplinary human-environment** interactions research by making data with **different formats** from **different scientific domains** easily interoperable

Provide an **organizational** and **technical** framework to **preserve, integrate, disseminate, and analyze** global-scale spatiotemporal data describing population and the environment.



TerraPop in Context

Collaborating Organizations



- Data integration expertise
- Large census and survey data collections & expertise
- Institutional foundation

- Human-environment interactions research expertise
- Environmentally-oriented data collections & expertise



- Data preservation and sustainability expertise
- Social science data collections & expertise



- Major producers and distributors of data on both humans and their environment
- Major producers of tools for integrating and transforming data across formats
- Leaders in preservation and sustainability

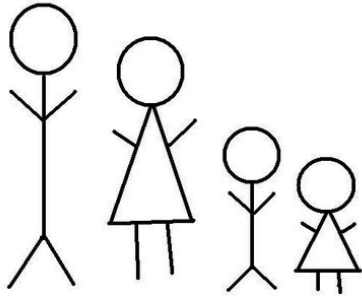


Source Data



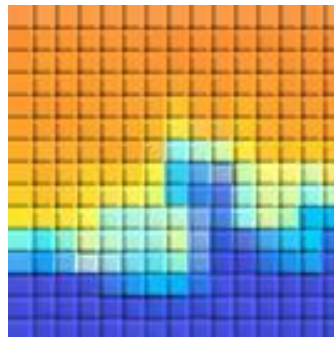
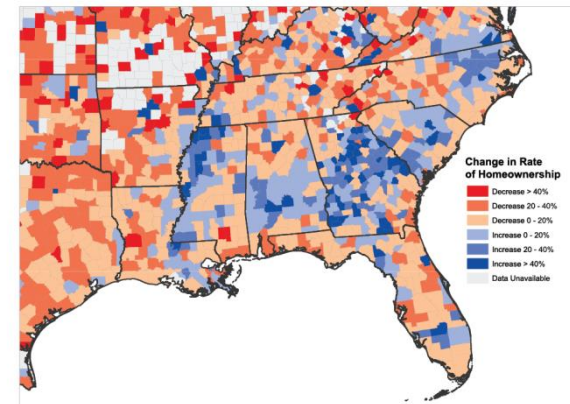
- **DOMAINS & FORMATS**
- **POPULATION MICRODATA**
- **AREA-LEVEL DATA**
- **ENVIRONMENTAL DATA**

Making disparate data formats interoperable



Microdata:
Characteristics of individuals
and households

Area-level data:
Characteristics of places defined
by boundaries



Raster data:
Values tied to spatial
coordinates



Age Birthplace
 Sex Mother's birthplace
 Relationship Race Occupation

H9100002400000000088001001000220100
P910000020101032120010010010011504
P910000010201036220010010010011999
P910201000301011220060010010011999
P910201000301009120060010010011999
P910201000301007120060010010011999
P910201000301006120060010010011999
P910201000301004220060010010011999
P910201000301003220060010010011999
P910201000301002220060010010011999
H9100002400000000088001001000110100
P910000020101030110010290510511310
P910000010201021210010290290171999
P910201000301001110060010290291999
H9100002400000000088001001000220100
P910000020101045120010010010011100
P910000010201025220010010010011820
P910201000301007220060010010011999
H9100002400000000088001001000220100
P910000020101049120010010010011100
P910000010201049220010010010011820
P910201000301019220060010010011820
P910201000301015220060010010012820

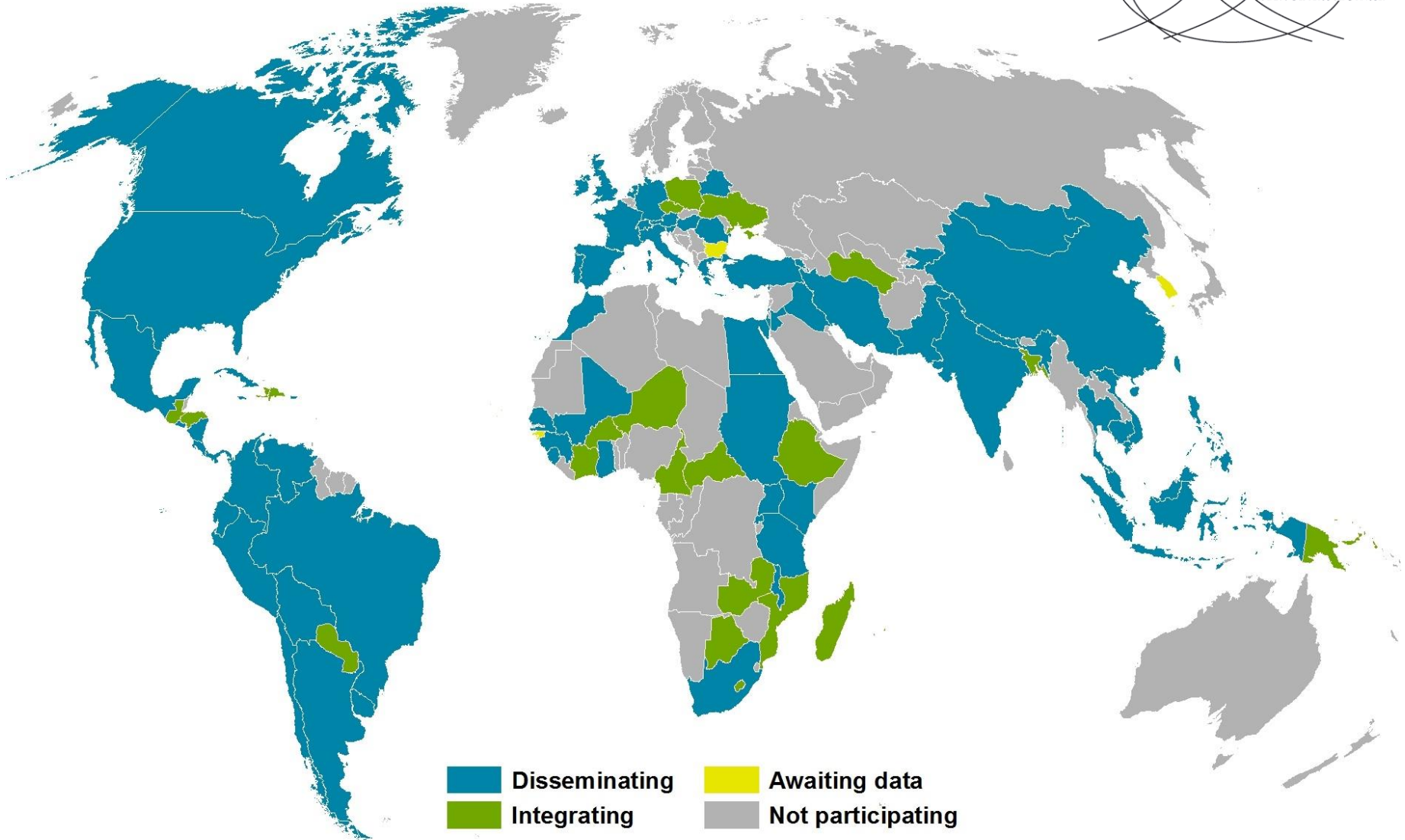
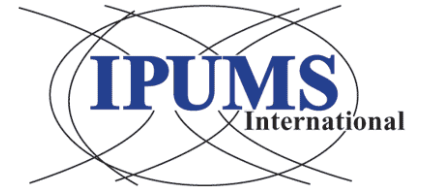
Population Microdata Structure

Geographic and housing characteristics

- Rows
 - Household records
 - Person records within households
- Columns
 - Variables



Microdata Availability



Area-level Data Sources

- Census tables, especially where microdata is unavailable
- Other types of surveys, data
 - Agricultural surveys
 - Economic surveys, data
 - Election data
 - Health data
- Legal/policy information



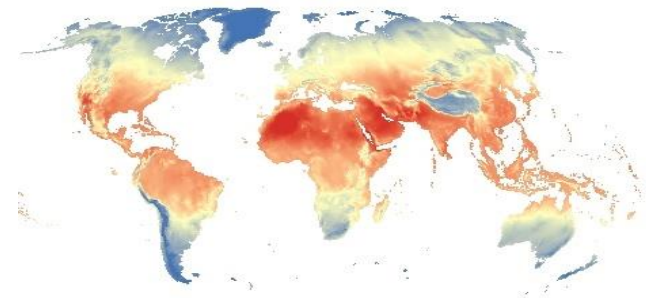
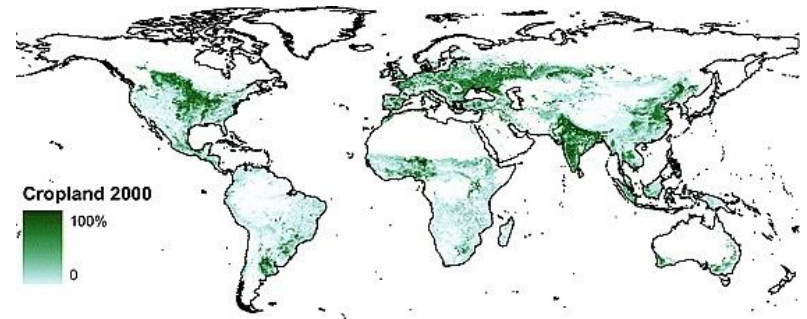
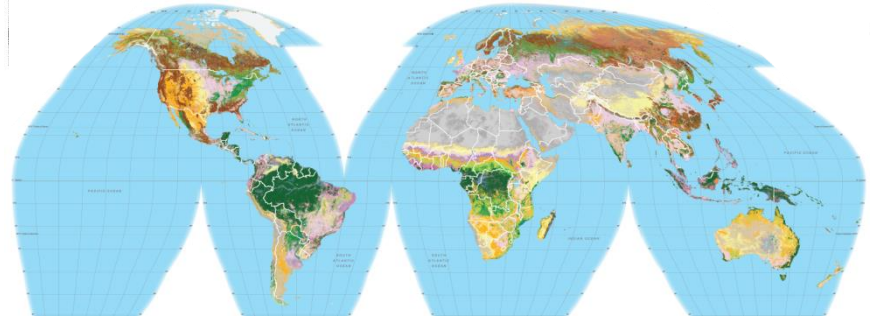
Environmental Data

- **Beta system**

- Global Land Cover 2000
- Harvested Area and Yield for 175 crops (*Global Landscapes Initiative*)
- Temperature and precipitation (*WorldClim*)

- **Future additions**

- Additional LU/LC and climate datasets
- Elevation
- Vegetation characteristics
- Bioclimatic & ecologic zones

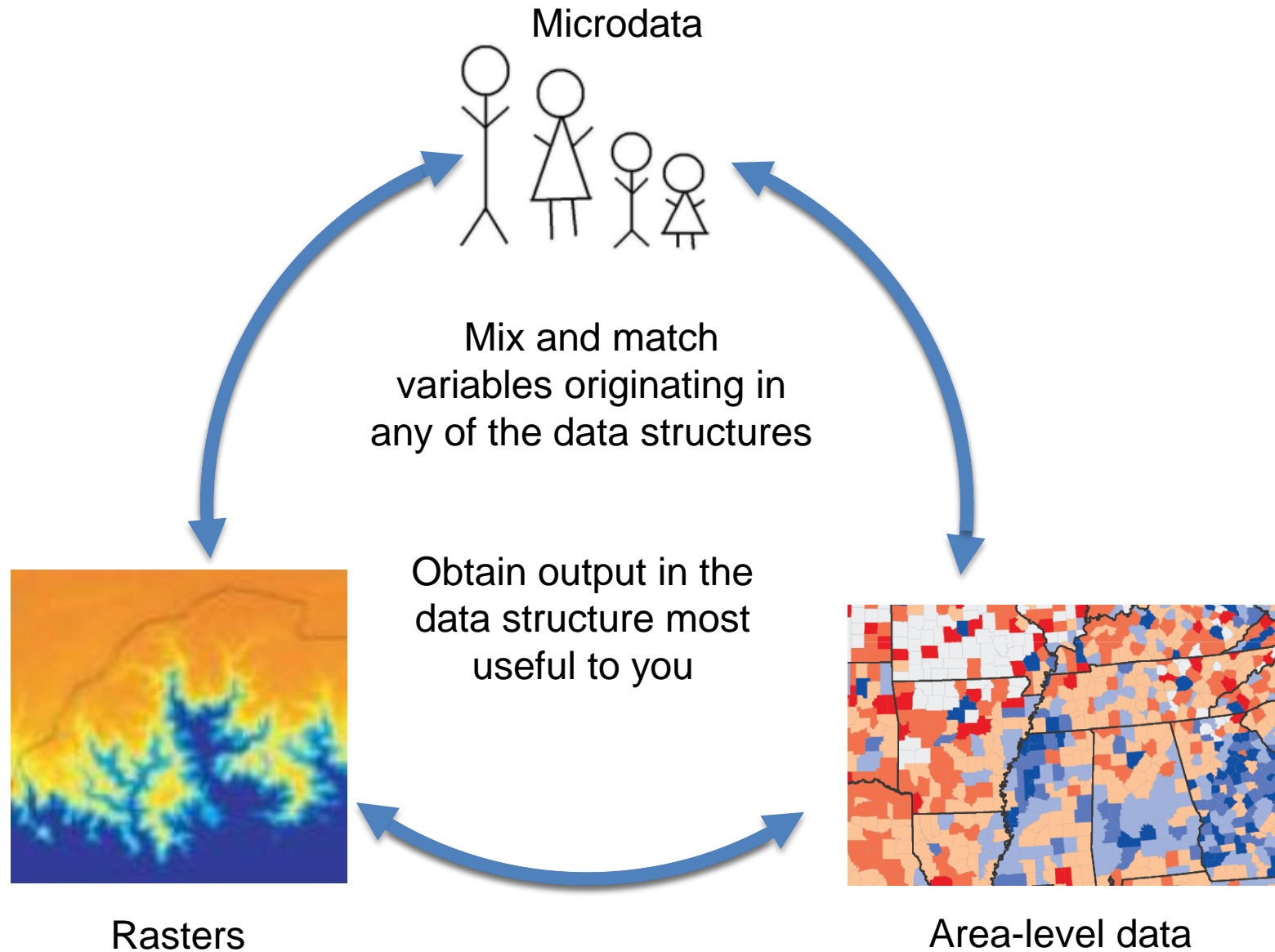


Location-Based Integration



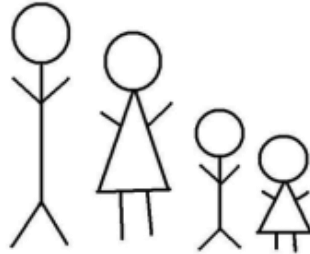
MICRODATA ⇔ AREA-LEVEL ⇔ RASTER

Location-Based Integration



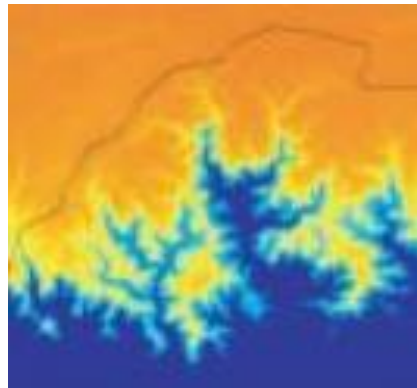
Location-Based Integration

Microdata

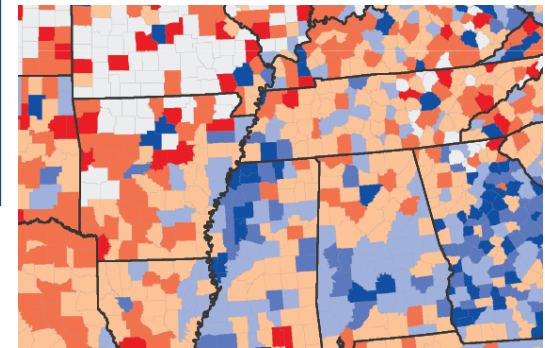


Individuals and households
with their environmental
and social context

AGE	SEX	LANDCOV	AVGTEMP
10	Male	Forest	21.20
27	Female	Forest	24.30
54	Female	Pasture	24.10
37	Male	Cropped	25.60
37	Female	Cropped	28.10
42	Female	Urban	26.70
20	Female	Forest	24.30
39	Male	Urban	26.80
77	Female	Cropped	27.70
11	Female	Cropped	22.30
31	Female	Pasture	25.10
23	Male	Forest	24.40
24	Female	Urban	21.50
40	Female	Urban	23.40



Rasters

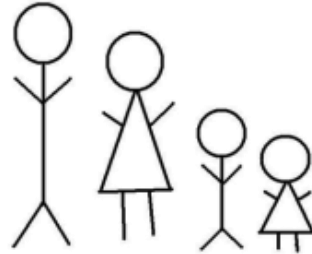


Area-level data



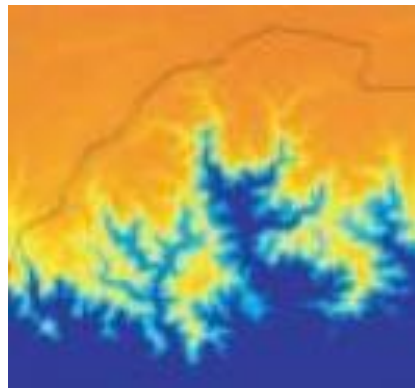
Location-Based Integration

Microdata

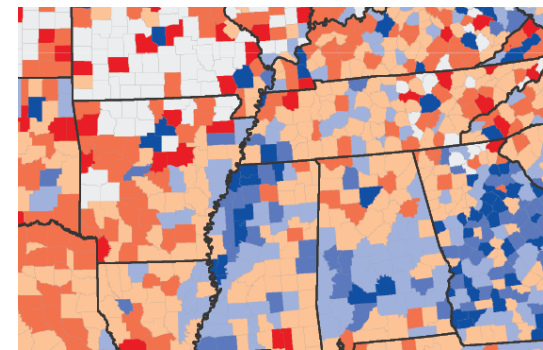


County ID	Avg. Ann. Temp.	Avg. Ann. Precip.	Rent, Rural	Rent, Urban	Own, Rural	Own, Urban
G17003100001	21.2	768	3129	1063	637	365
G17003100002	23.4	589	2949	1075	1469	717
G17003100003	24.3	867	3418	1589	1108	617
G17003100004	21.5	943	1882	425	202	142
G17003100005	24.1	867	2416	572	426	197
G17003100006	24.4	697	2560	934	950	563
G17003100007	25.6	701	2126	653	321	215

Summarized environmental and population characteristics for administrative districts



Rasters

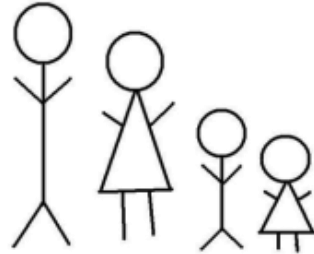


Area-level data

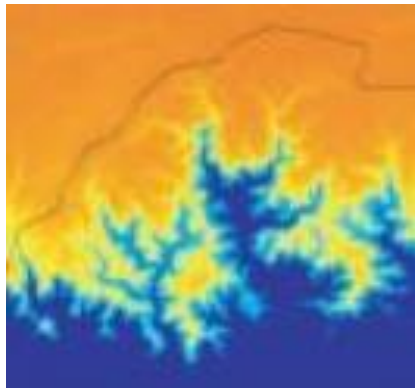


Location-Based Integration

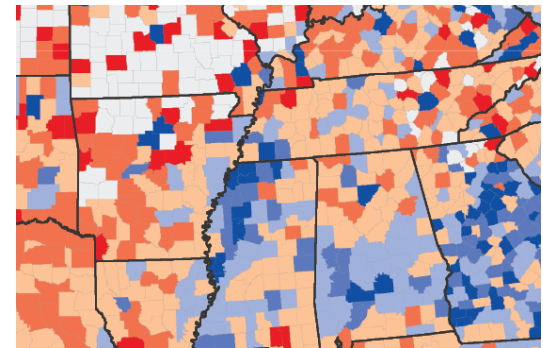
Microdata



Rasters of
population and
environment
data



Rasters



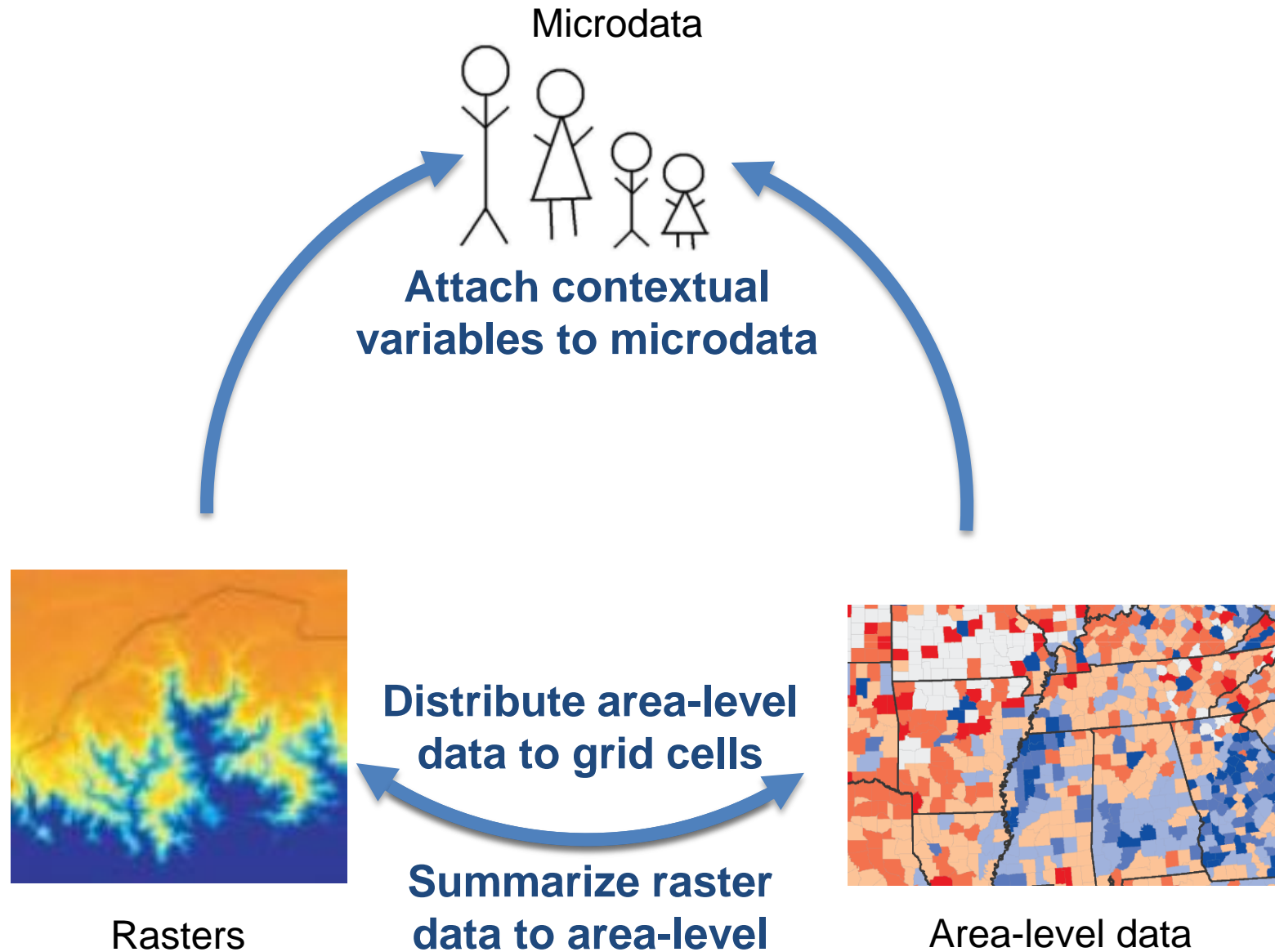
Area-level data



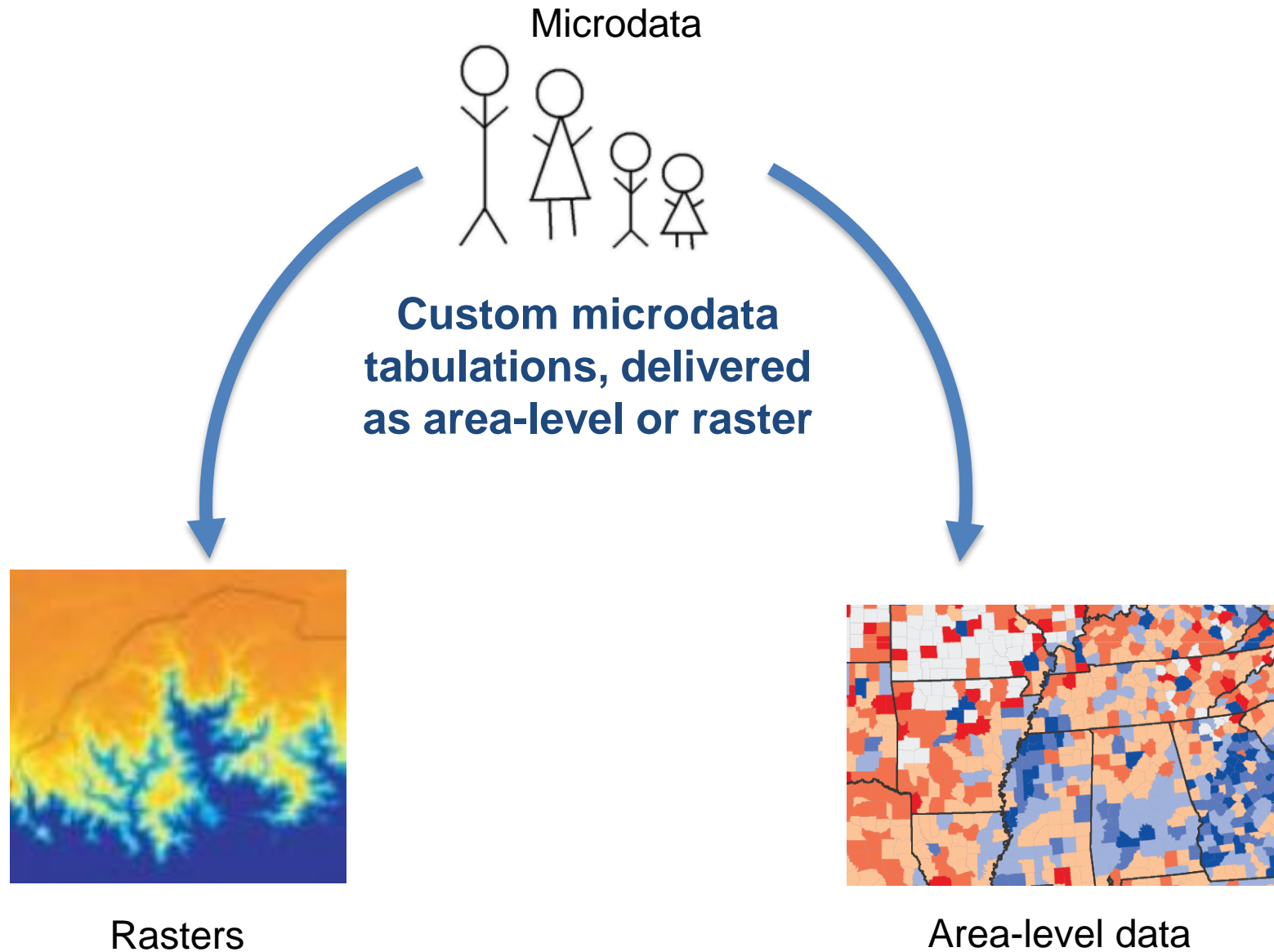
Current Status & Future Plans



Transformations Supported in Beta



Transformations in future releases



TerraPop Beta - Microdata

Samples			
Argentina 1970	Brazil 1980	Malawi 1998	Vietnam 1989
Argentina 1980	Brazil 1991	Malawi 2008	Vietnam 1999
Argentina 1991	Brazil 2000		Vietnam 2009
Argentina 2001		USA 1980	
Argentina 2010	Spain 1991	USA 1990	
	Spain 2001	USA 2000	
		USA 2010	



TerraPop Beta – Area-level Data

Samples			
Argentina 1970	Brazil 1980	Malawi 1998	Vietnam 1989
Argentina 1980	Brazil 1991	Malawi 2008	Vietnam 1999
Argentina 1991	Brazil 2000		Vietnam 2009
Argentina 2001		USA 1980	
Argentina 2010	Spain 1991	USA 1990	
	Spain 2001	USA 2000	
		USA 2010	



TerraPop Beta - Raster

Datasets	
Land cover	Global Land Cover 2000
Land use	Harvested Area and Yield for 175 crops (Global Landscapes Initiative)
Climate	Temperature, precipitation and bioclimatic variables from WorldClim



Planned Additions

- Remaining microdata samples from IPUMS-International
- Area-level census data for the United States
 - National Historical Geographic Information System Time Series Tables for states and counties
- Area-level census data for countries not in IPUMS-International



Planned Additions

- **Land cover**
 - MODIS MCD12Q1 annual land cover data
 - Globcover
 - MODIS Vegetation Continuous Fields
- **Land use**
 - MODIS 500m Map of Global Urban Extent
 - Global Land Use Dataset (5 classes)



Timeline

- Beta access system is currently available for users at <https://beta.terrapop.org>
- Mid to late summer 2014 – NHGIS-derived aggregate US census data and MODIS land cover (2001-2012) available in TerraPop
- Fall 2014 – remainder of IPUMS-International collection available in TerraPop
- 2015-2016 – Incorporation of additional data, microdata tabulation functionality, other enhancements



Data Access System



[DEMO VIDEO](#) – AREA-LEVEL DATA EXTRACT

Contact



USER SUPPORT: TERRAPOP@UMN.EDU

TWITTER: @TERRAPOP

