

INIA edges on D99 volume



D99 edges on INIA volume



INIA edges on MNI volume



MNI edges on INIA volume



INIA edges on NMTv1.2 volume



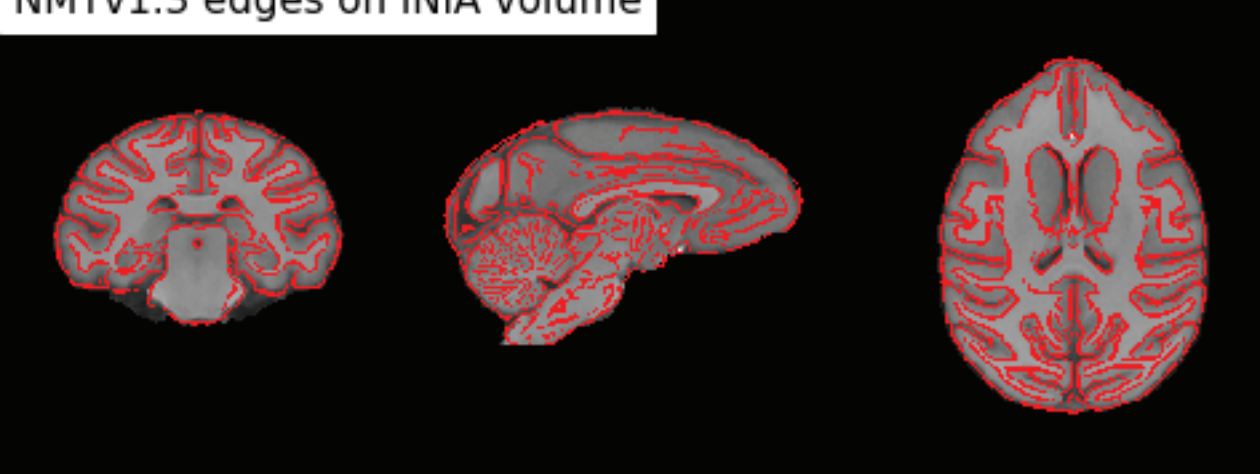
NMTv1.2 edges on INIA volume



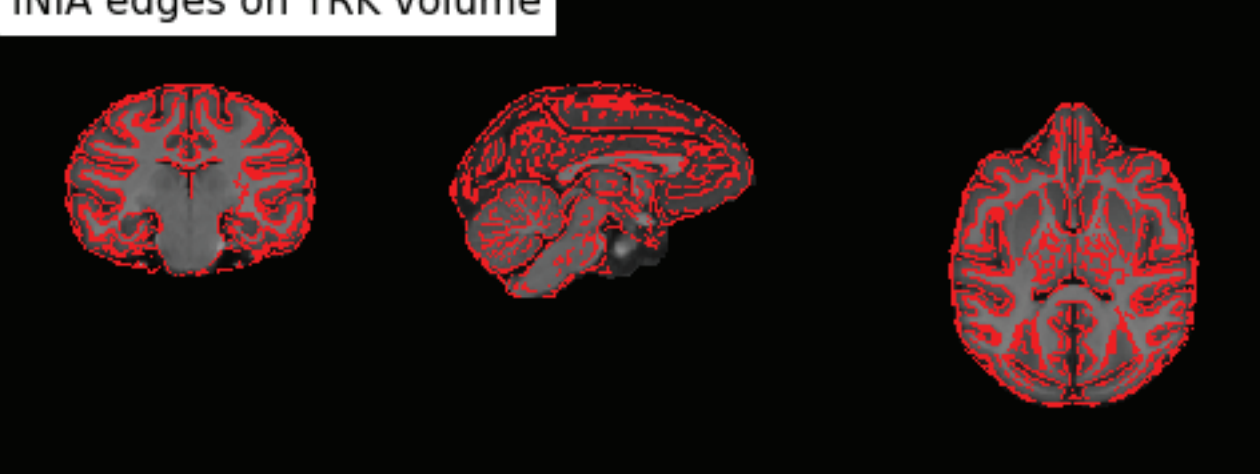
INIA edges on NMTv1.3 volume



NMTv1.3 edges on INIA volume



INIA edges on YRK volume



YRK edges on INIA volume

