

# Mapping Historical Mississauga

Uncovering the city's  
changing landscapes online  
using historical maps and  
digital data

Andrew Nicholson, University of Toronto  
Mississauga  
Kara Handren, Scholars Portal



# Overview

- Introductions
  - The City of Mississauga
  - The Scholars Portal GeoPortal
- Datasets
  - Topographic Maps (1909-1977)
  - Aerial Imagery (1944-present)
  - Vector Data (2016-present)
- Case Studies
  - Rural to Urban Transformation
  - The Lakeview Generating Station ie. “Four Sisters”



# Mississauga

## A case study of post-WWII urban change

- 1951: a loose rural grouping of villages and hamlets known
  - population 33,000
  - 1968: becomes the “Town of Mississauga”
    - Population 107,000
  - 1974: incorporated as a city in 1974
    - Population 250,000
- 2018
  - Current population of over 700,000
  - The 6th largest city in Canada



# The Scholars GeoPortal

The Ontario Council of University Libraries (OCUL) is a consortium of Ontario's 21 university libraries.

**Scholars Portal** is OCUL's technical infrastructure. It supports, preserves and provides access to various information resources and services.

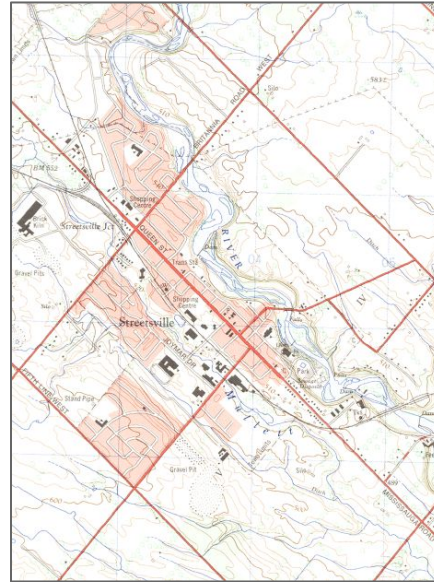
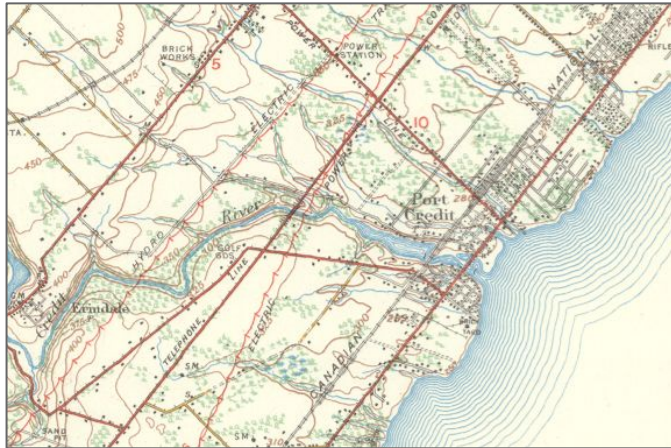
**Scholars GeoPortal** is a geospatial data discovery tool/portal, that is supported by Scholars Portal.

- ▶ <http://geo.scholarsportal.info/>



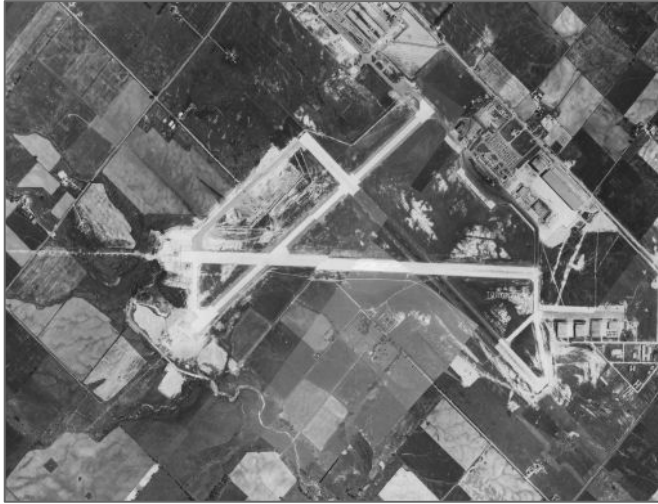
# Topographical Maps

- Georeferenced NTS map sheets, 1:63,360 and 1:25,000 series
  - Over 20 sheets, 1909 - 1974



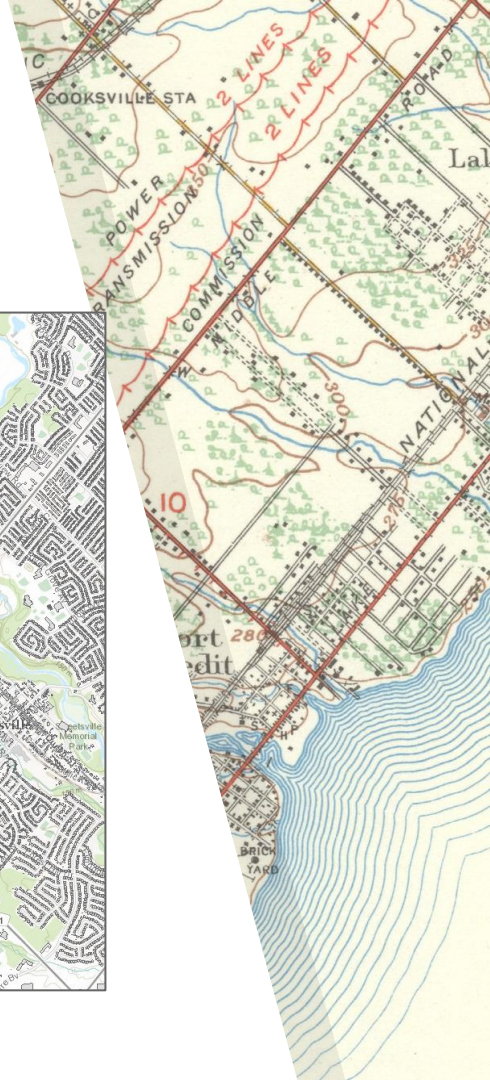
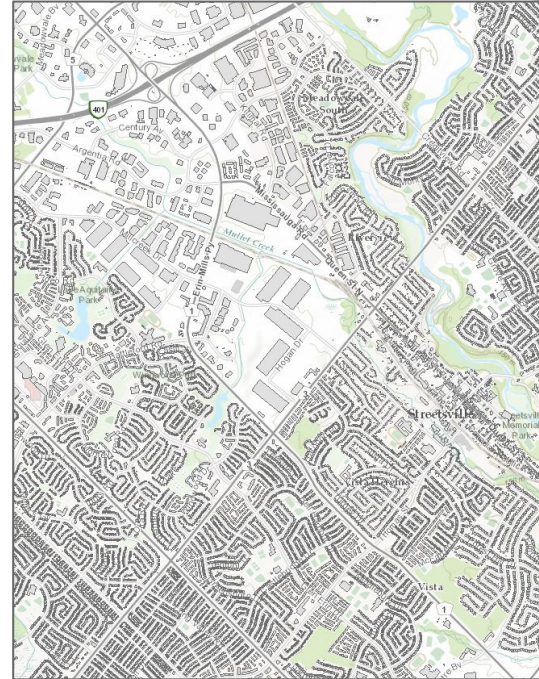
# Imagery / Air Photos

- Georeferenced air photos / imagery
  - 1944 - 2017



# Vector Data

- Federal, provincial and municipal level
  - Over 200 datasets
  - Examples of data include:
    - Transit lines
    - Utilities
    - Pedestrian trail networks
    - Schools
    - Building age data
    - Contour lines
    - Census data



# Case Studies





# Rural to Urban Transformation

- ▶ The Geoportal allows students to study change with a focus on neighbourhoods and the impacts of new roads, highways, railways, public transit routes, etc.



# Demo/Layout #1

Highway 2 - Lakeshore  
Port Credit is centre of map



1909



1929



1938



# Demo/Layout #2

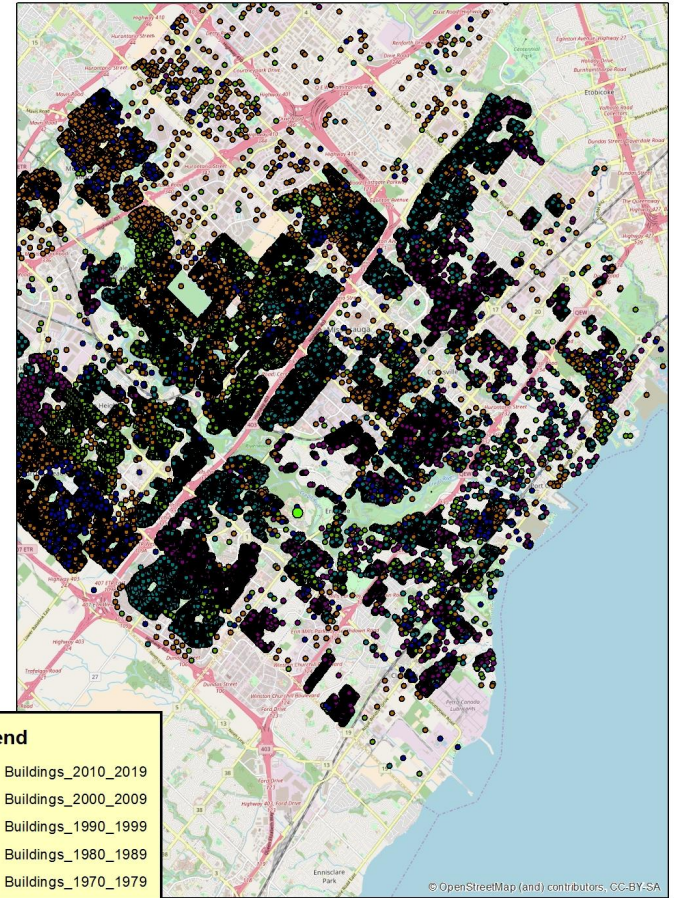
With Mississauga incorporated as a city in the mid-1970s, planners soon began to plan for new developments, especially homes.

City of Mississauga  
"Age of Building" Data 1970-2019



1909 Base Map

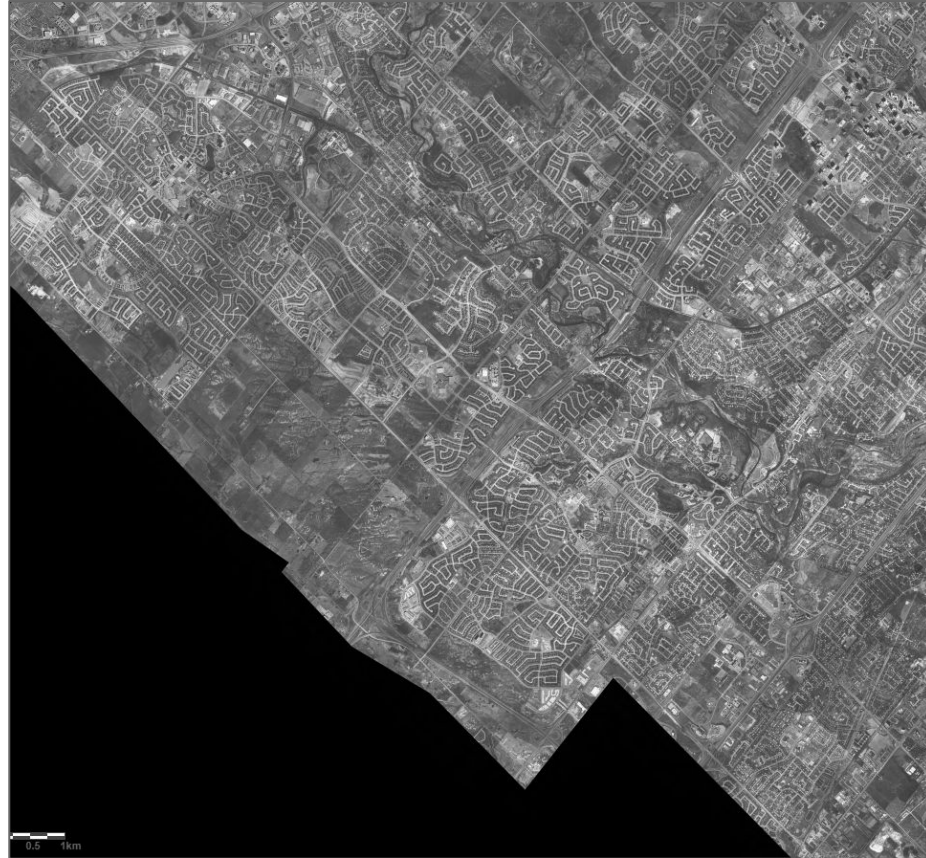
City of Mississauga  
"Age of Building" Data 1970-2019



OpenStreetMap

# Demo/Layout #2

Development further west with  
extension of Highway 403  
West Mississauga in 1995  
The extension has not yet been  
built



# Demo/Layout #2

Development further west with  
extension of Highway 403  
West Mississauga in 1999  
The extension is bottom left



# Demo/Layout #2

Development further west with  
extension of Highway 403  
West Mississauga in 2005  
Rapid growth over the 5 years  
after the extension was built



# Demo/Layout #2

Development further north after the building of Square One Shopping Centre Mall constructed in 1973. Image as of 1969



# Demo/Layout #2

Development further north after building of Square One Shopping Centre Mall constructed in 1973. Image as of 1975 (mall is bottom right)





# Demo/Layout #2

Development further north after building of Square One Shopping Centre Mall constructed in 1973. Image as of 1985 (mall is bottom right)



# Demo/Layout #2

Development further north after building of Square One Shopping Centre Mall constructed in 1973. Image as of 1995 (mall is bottom right)



# Demo/Layout #2

Development further north after building of Square One Shopping Centre Mall constructed in 1973. Image as of 2005 (mall is bottom right)



# The Lakeview Generation Station ie. “Four Sisters”

- Opened June 20th, 1962
- Was the largest coal-fired station in the world
- 143 metre high stacks, could be seen for miles
- Closed April 30, 2005
- Land is now slated for redevelopment as a residential neighbourhood, with community parks and retail centres
- Had a **huge** impact on the character of the surrounding landscape and views



Image courtesy: "Lakeview Generating Station" [Wikipedia](https://en.wikipedia.org/wiki/Lakeview_Generating_Station).  
[https://en.wikipedia.org/wiki/Lakeview\\_Generating\\_Station](https://en.wikipedia.org/wiki/Lakeview_Generating_Station)



Image courtesy: "4 Sisters' and their Demolition!" [Insauga](https://www.insauga.com/the-4-sisters-and-their-demolition). March 27, 2016. <https://www.insauga.com/the-4-sisters-and-their-demolition>

# Demo/Layout #1

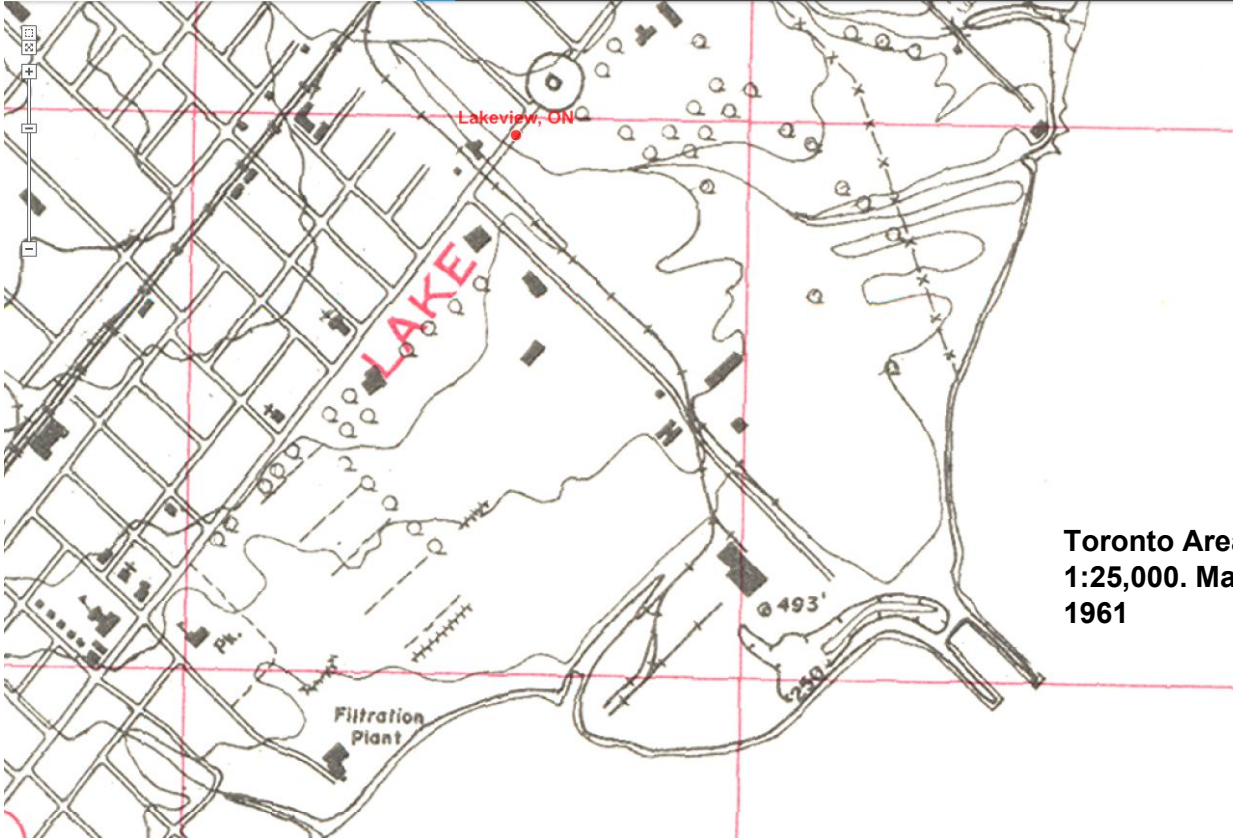
Scholars GeoPortal



1954

# Demo/Layout #1

Scholars GeoPortal



Toronto Area / Port Credit, Ontario.  
1:25,000. Map Sheet 030M12A, ed. 1,  
1961

1961



# Demo/Layout #1

Scholars GeoPortal

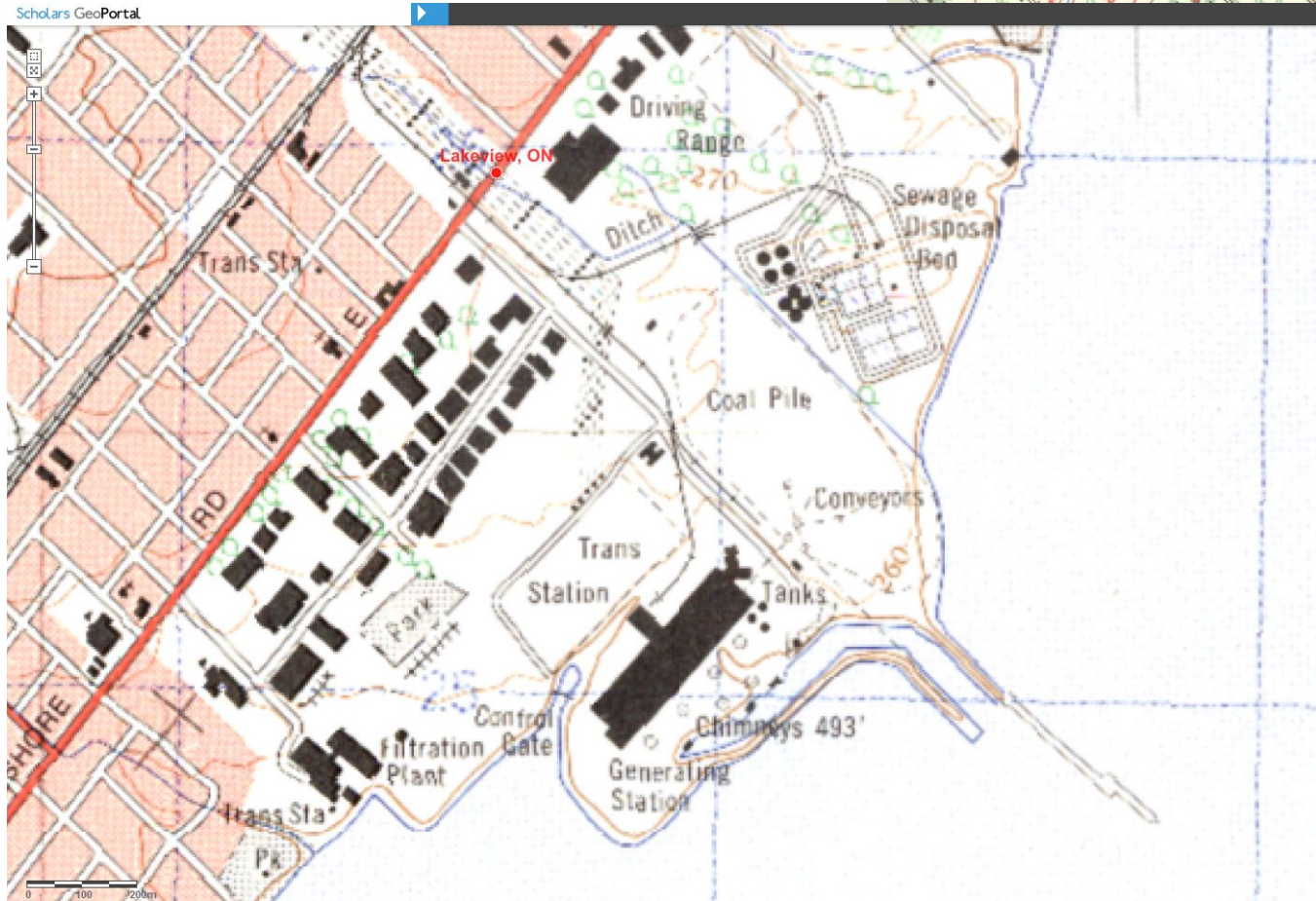


1966



# Demo/Layout #1

Port Credit, Ontario. 1:25,000.  
Map Sheet 030M12A & 030M11D,  
ed. 3, 1974





# Demo/Layout #2

2004

Scholars GeoPortal

Save St

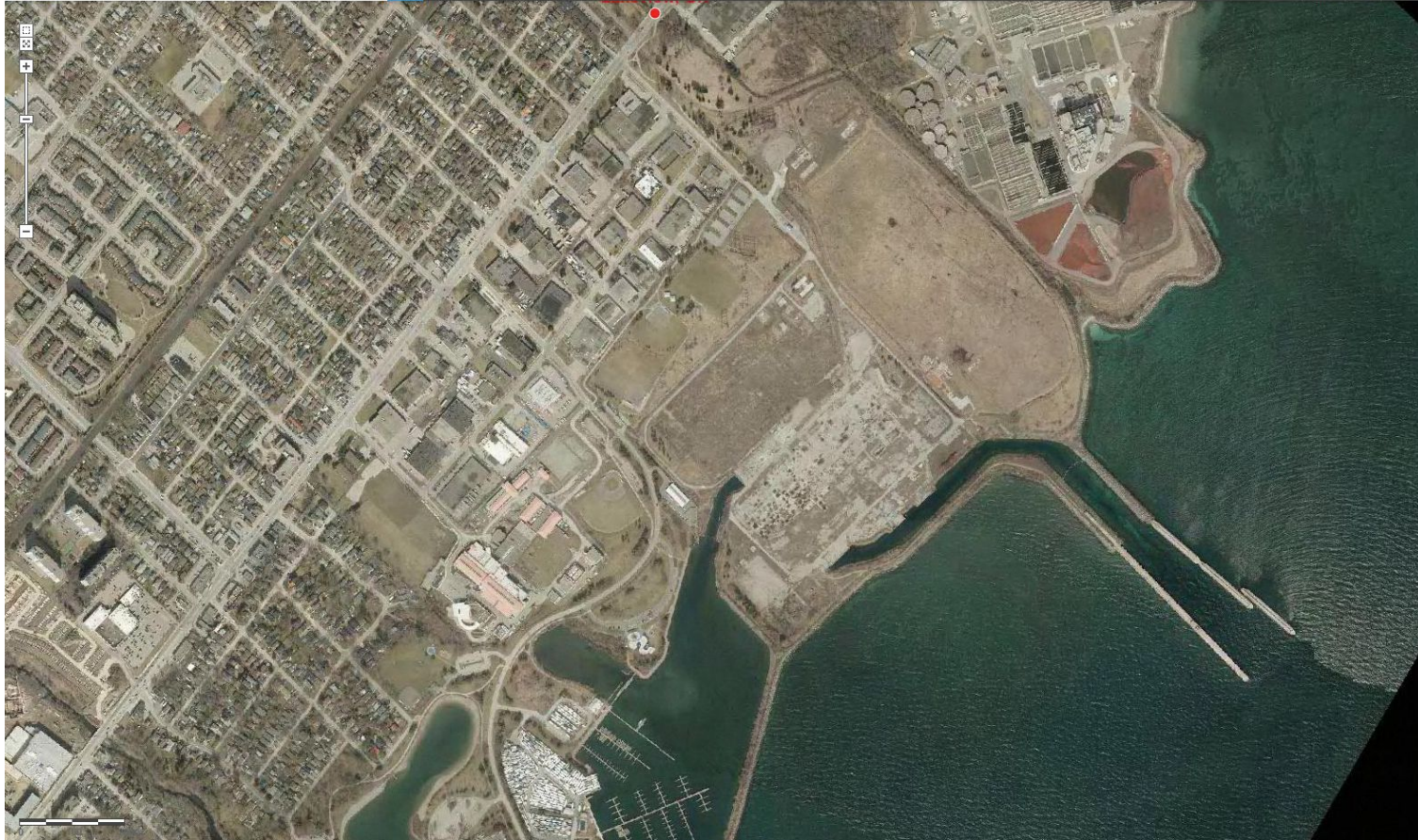


# Demo/Layout #2

2016

Scholars GeoPortal

Save Share Print Export

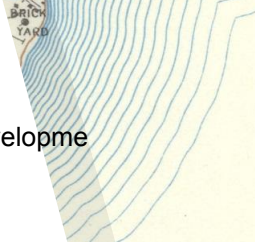


# Postscript....

After years of remediation and planning debates, Lakeview was sold in March 2018 by the province to developers for a mixed use site.



Renderings from *Insauga*, September 29, 2016.  
<https://www.insauga.com/massive-waterfront-development-is-underway-in-mississauga-near-port-credit>



# Thank you!

