
Responding to & Aligning with an Evolving Research Landscape

Daniella Lowenberg
@danilowenberg
Dryad Product Manager
California Digital Library,
University of California



I would picture myself as a virus... for example, and try to sense what it would be like... I would also imagine myself as the immune system, and I would try to reconstruct what I would do as an immune system engaged in combating a virus... When I had played through a series of such scenarios on a particular problem and had acquired new insights, I would design laboratory experiments accordingly

- Jonas Salk

Calibrating our expectations

Ethical behavior takes time

Retain & build confidence in science

Balance rapid dissemination
w/ review & curation

Supporting researcher
needs in a new landscape

Data management is, far and away, the most popular workshop we have offered during campus shutdown and we've been invited to speak about making sure open data is usable data to lots of different student and research groups. We see data services as one of our core activities.

- ***Medical Data Librarian, Stanford***



We have seen an increase in questions about accessing high-powered computing resources, given that the library's advanced workstations are currently inaccessible... I am also aware of one COVID-related research project underway at our institution where a librarian was able to make a connection between researchers in different departments that did not know one another prior...it's exciting to know that we're making an impact in that way.

- *Research Data Librarian, NC State*



There has been an upsurge in faculty members requesting support for systematic reviews as they are more focused on the literature research part of their work while non-COVID research labs have closed. The medical library here has also created a special guide with resources for clinicians...the science and social science librarians are in the process of creating a guide which will include resources related to the environmental, economic, policy, legislation, demographic, and other areas of impact.

- ***Associate University Librarian for Medicine and Social Sciences, Yale***



We're using our repository to rapidly highlight and preserve data, visualizations, and other research-related materials at Northwestern and for the highly collaborative, multi-site Chicago COVID Coalition. We're also launching an effort to collect and preserve the experiences and creative works of the Feinberg School of Medicine community in response to this pivotal moment in time for future study and reflection.

- ***Director, Galter Health Sciences Library,
Northwestern School of Medicine***



Our collaboration areas are thriving... we expect that we will repurpose our budget toward supporting collaborative infrastructure

- ***Earth Science Information Partners (ESIP)***

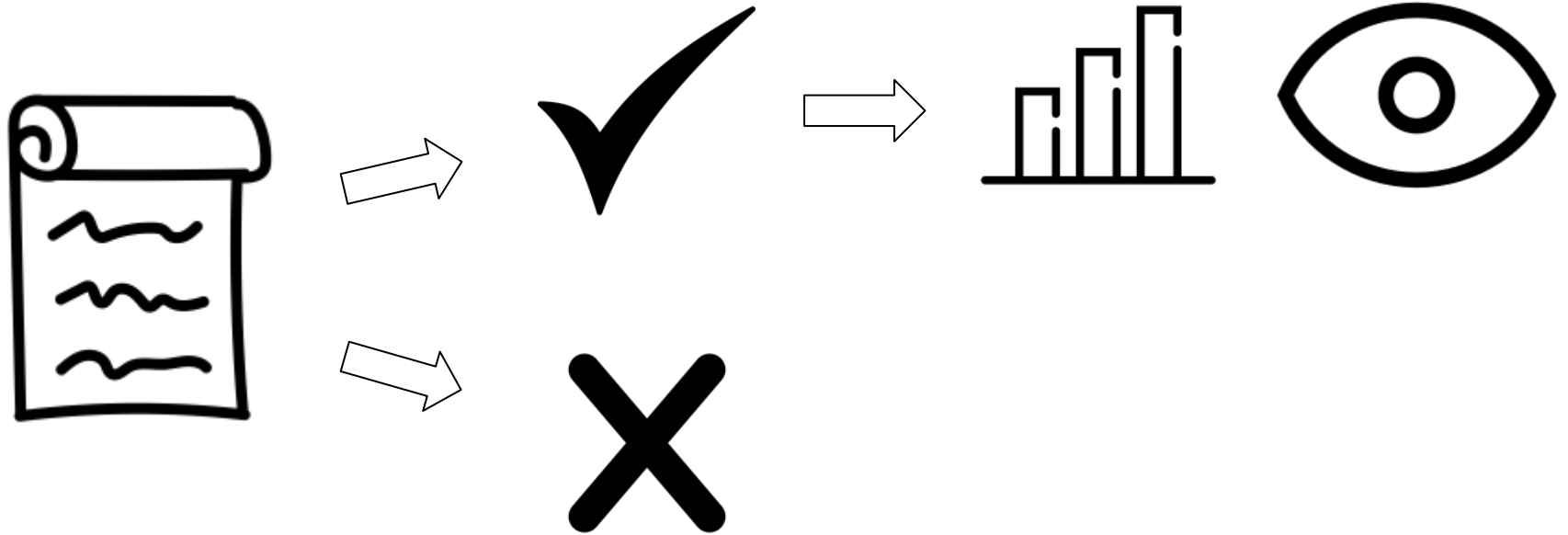
BCO-DMO has experienced an increase in data activity while science is quarantined from labs, research cruises, and field sites; in submissions, but also in contributor responsiveness and willingness to work through data questions.

- ***Biological & Chemical Oceanography Data Management Office (BCO-DMO)***



Intentional & scalable workflows

Supporting publisher processes



Supporting immediate publication

In Review | nature research

Preprints are preliminary reports that have not undergone peer review. They should not be considered conclusive, used to inform clinical practice, or referenced by the media as validated information.

» Learn more about *In Review*

RESEARCH ARTICLE *Infectious Diseases*

Respiratory Virus Shedding in Exhaled Breath and Efficacy of Face Masks

> Nancy HL Leung, Daniel KW Chu, Eunice YC Shiu, Kwok-Hung Chan, James J McDevitt, Benien JP Hau, Hui-Ling Yen, Yuguo Li, Dennis KM Ip, JS Malik Peiris, Wing-Hong Seto, Gabriel M Leung, Donald K Milton, Benjamin J Cowling

DOI: 10.21203/rs.3.rs-16836/v1

▲ View the final published version at Nature Research.



Respiratory virus shedding in exhaled breath and efficacy of face masks

Leung, Nancy H. L., University of Hong Kong, <https://orcid.org/0000-0001-7314-840X>

Chu, Daniel K. W., University of Hong Kong

Shiu, Eunice Y. C., University of Hong Kong

Chan, Kwok-Hung, University of Hong Kong, <https://orcid.org/0000-0003-1771-8249>

McDevitt, James J., Harvard University

Hau, Benien J. P., University of Hong Kong, <https://orcid.org/0000-0002-8871-4336>

Yen, Hui-Ling, University of Hong Kong, <https://orcid.org/0000-0003-2493-3609>

Li, Yuguo, University of Hong Kong

Ip, Dennis K. M., University of Hong Kong

Peiris, J. S. Malik, University of Hong Kong

Seto, Wing-Hong, University of Hong Kong

Leung, Gabriel M., University of Hong Kong

Milton, Donald K., University of Maryland, College Park

Cowling, Benjamin J., University of Hong Kong, <https://orcid.org/0000-0002-6297-7154>

leungnan@hku.hk, dkwchu@hku.hk, eunshiu@connect.hku.hk, chankh2@hku.hk, jjmiv65@icloud.com, benienhau@gmail.com, hyen@hku.hk, liyg@hku.hk, dkmip@hku.hk, malik@hku.hk, whseto@hku.hk, gmleung@hku.hk, dmilton@umd.edu, bcowling@hku.hk

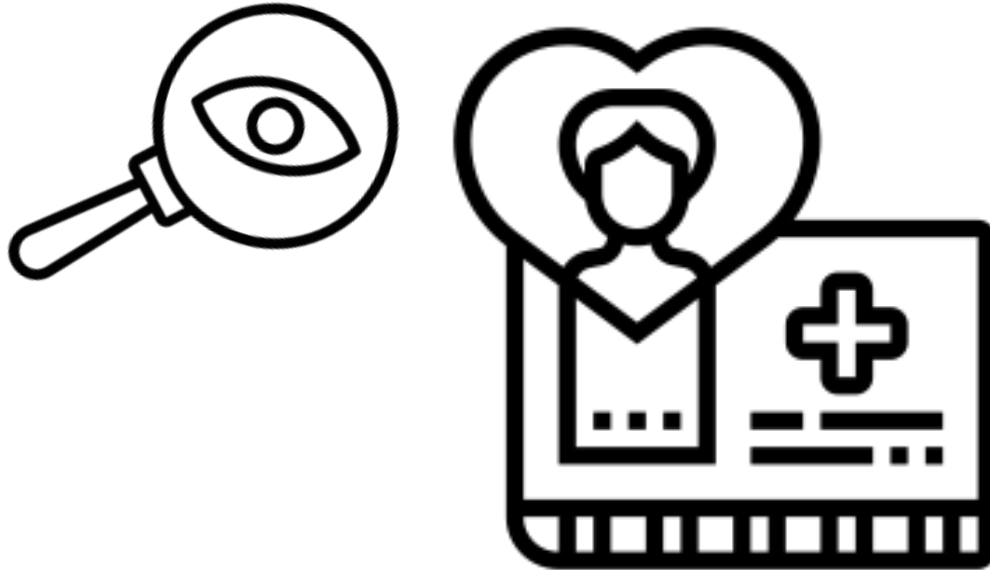
Publication date: April 10, 2020

Publisher: Dryad

<https://doi.org/10.5061/dryad.w9ghx3ft>



Keen attention to high risk data

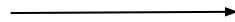


Optimize for re-use & discovery



Working beyond the repository

Open for re-use



Responding to changing dynamics



RDA COVID-19 Working Group



Virus Outbreak Data Network (VODAN)



Further Together

<https://datadryad.org>

<https://blog.datadryad.org>

@datadryad

@danilowenberg

