

The Alan Turing Institute

The Turing Way:
**A community built on a
culture of collaboration**

Malvika Sharan

Pronouns: she/her



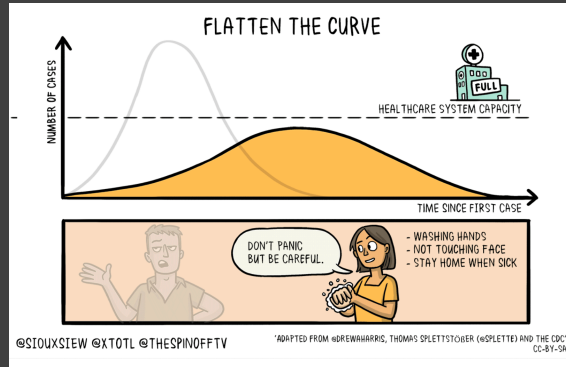
@malvikasharan @turingway, #TuringWay

#WorkFromHome

A person is seen from the side, wearing a light-colored long-sleeved shirt, sitting at a desk and working on a laptop. The laptop screen displays a web application with various charts and data. To the right of the person, there is a grey plastic laundry basket filled with folded laundry, including a white shirt and a patterned cloth. The background is a simple indoor setting with a white wall and a yellow curtain.

Picture on Unsplash by @charlesdeluvio, @malvikasharan @turingway, #TuringWay

#WorkFromHome



<https://thespinoff.co.nz/>

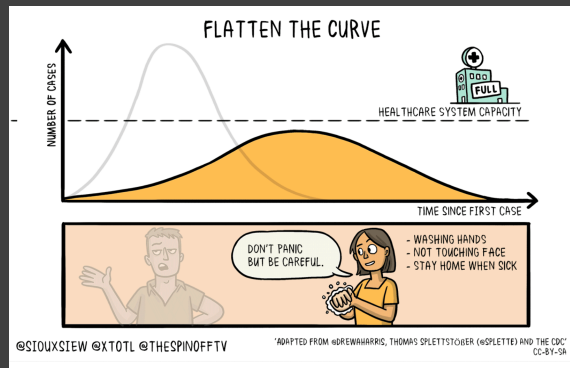
#StayHomeSaveLives

HM Government

We **must** all stay home to
protect our NHS and save lives.

<https://www.gov.uk/>

#WorkFromHome



<https://thespinoff.co.nz/>

Mask Guide 口罩指南 by Che-Lin Chan and Chi-Yung Yang

Mask guide is an application that helps individuals in Taiwan locate stores that are selling face masks. (Note: the WHO and the CDC are not currently recommending the use of masks to prevent the spread of COVID-19 unless you are taking care of an individual with suspected COVID-19 infection. WHO guidelines for masks.)

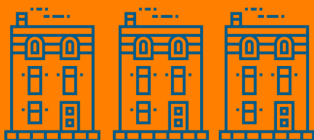


<https://mask.chel.in/en/>

#StayHomeSaveLives



We **must** all stay home to protect our NHS and save lives.



<https://www.gov.uk/>

Toilet Paper Calculator

By Nathan Yau

Those who stored up on toilet paper until summer are probably set, but I suspect a good number of people are starting to run low. When you go to restock, here's a calculator to figure out how much you need to buy.

TOILET PAPER CALCULATOR

This is how much toilet paper you need.

For each input value, use your average.

There are people in my home.

Each person wipes times per day.

Do not include non-wiping sessions.

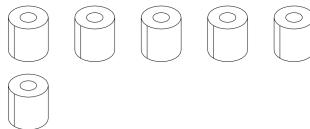
We use sheets per wipe.

There are sheets per roll.

A Costco roll has 420 sheets. Charmin Ultra Mega has 320. Cottonelle Ultra Comfort Care has 121. Scott Tidy has 1,000.

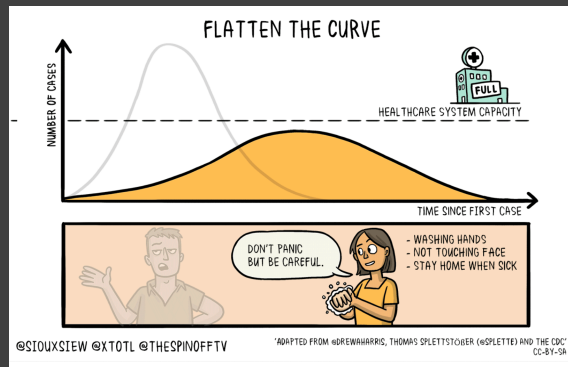
You use about **0.36 rolls per day**.

To last **14 days**, you need **6 rolls**.



<https://flowingdata.com/>

#WorkFromHome



<https://thespinoff.co.nz/>



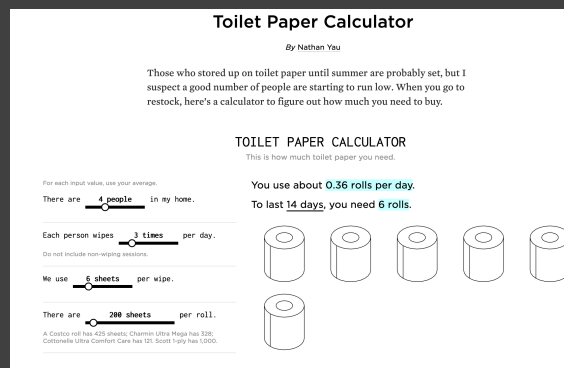
<https://mask.chel.in/en/>



By Kirstie Whitaker & Team



<https://www.gov.uk/>



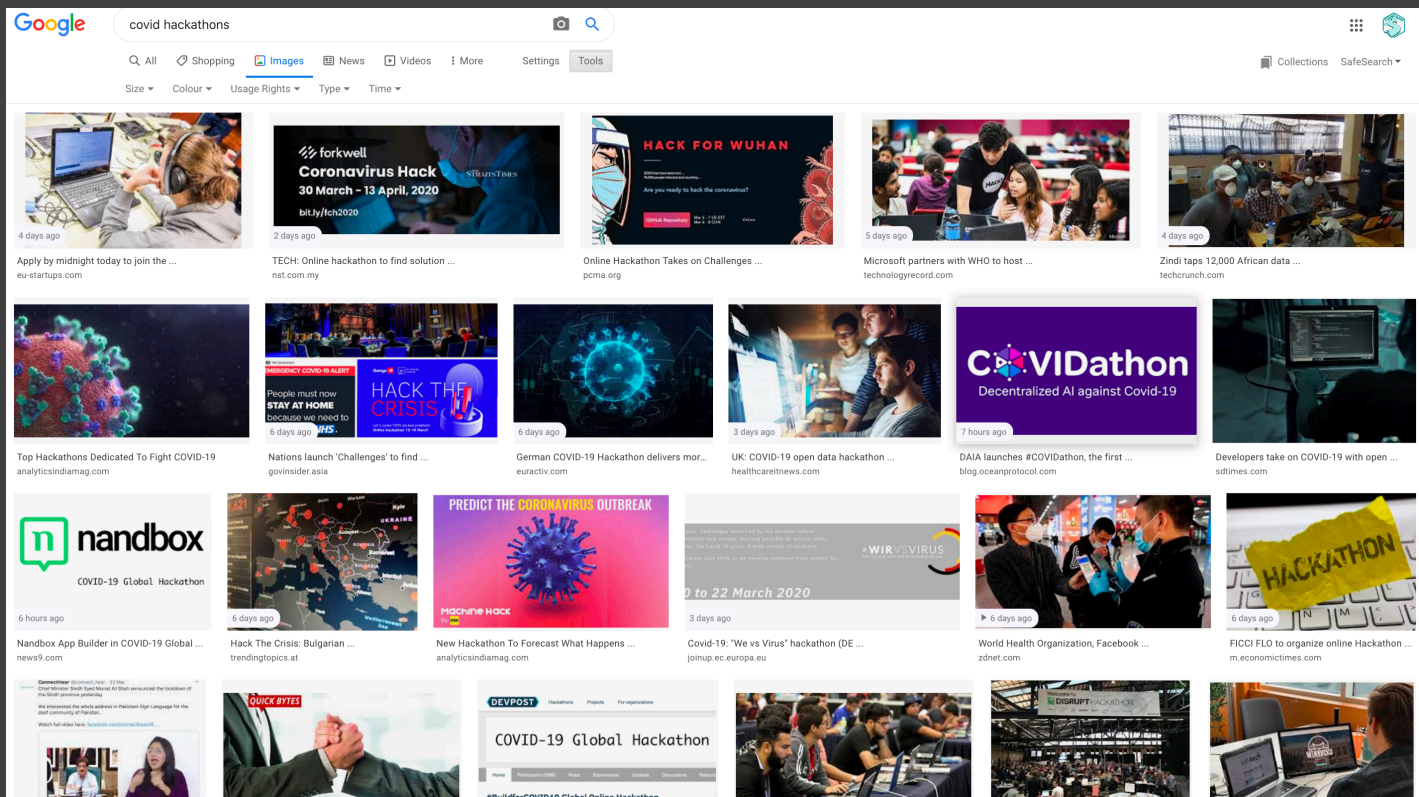
<https://flowingdata.com/>



By my co-quarantined human

Online platforms and communities

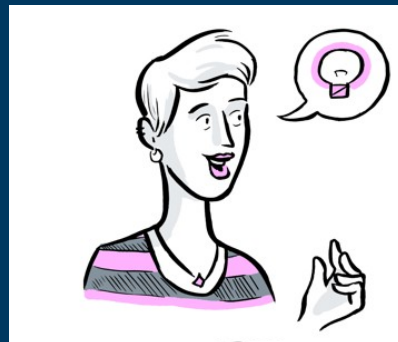
Online platforms and communities



Screenshot - Google Search term "covid hackathon", @malvikasharan @turingway, #TuringWay

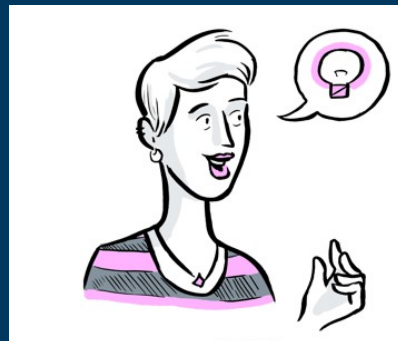
This talk is

- Not about COVID-19 or hackathons!



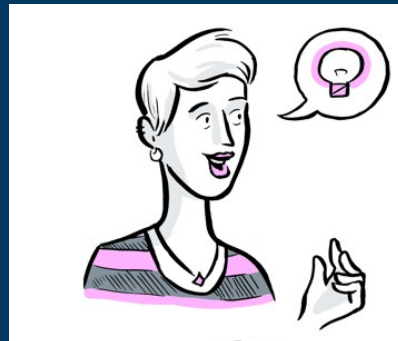
This talk is

- ~~Not about COVID-19 or hackathons!~~
- About open research & communities



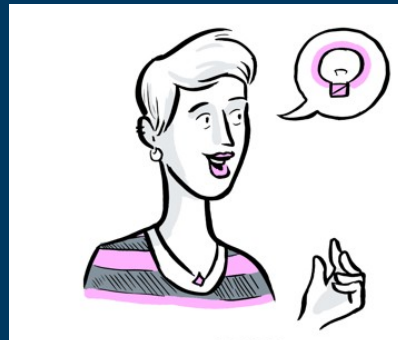
Time for Open Communities

- ~~Not about COVID-19 or hackathons!~~
- About open research & communities
- Anyone can lead an 'Open' project



Time for Open Communities

- ~~Not about COVID-19 or hackathons!~~
- About open research & communities
- Anyone can lead an ‘Open’ project
- *Also more people may face barriers to open research, if not done right.*





Open community



“

***Open community** refers to collaborative efforts in Open Research that anyone can join and contribute to.*

”



***Open community** refers to collaborative efforts in Open Research that anyone can join and contribute to.
The direction and goals are determined collaboratively.*





***Open community** refers to collaborative efforts in Open Research that anyone can join and contribute to.
The direction and goals are determined collaboratively.
The resulting work is made available under a free license.*



Barriers to Open Research

- Reward system
- Novel findings
- Publication cost
- Training and skill transfer
- Leadership
- Institutions (often)
- Lack of trust



Barriers to Open Research communities

Open community refers to collaborative efforts in Open Research that anyone can join and contribute to.

The direction and goals are determined collaboratively.

The resulting work is made available under a free license.

Barriers to Open Research communities

Open community refers to collaborative efforts in Open Research that anyone can join and contribute to.

The direction and goals are determined collaboratively.

The resulting work is made available under a free license.

The biggest barrier is a lack of open & inclusive culture

The biggest barrier is a lack of open & inclusive culture

*When you come to a new place, it's awkward and difficult when **rules are clear to everyone in the community but unspoken, unwritten, and hence, overwhelming to the new members.***

- Aidan Budd (Paraphrased)

The biggest barrier is a lack of open & inclusive culture



Dr. Christie Bahlai

@cbahlai

Replying to @cbahlai @o_guest and 5 others

It was a damned hard community to break into. Any step I took to be more open, I felt attacked for not doing enough/doing it right.

6:08 PM · Jun 4, 2017 · [Twitter for Android](#)

It's not just about choosing right licences and putting code on github, it's about actually improving accessibility and bringing people in

6:19 PM · Jun 4, 2017 · [TweetDeck](#)

Christie Bahlai, Assistant Professor, Kent University

The biggest barrier is a lack of open & inclusive culture



Dr. Christie Bahlai
@cbahlai

Replying to @cbahlai @o_guest and 5 others

It was a damned hard community to break into. Any step I took to be more open, I felt attacked for not doing enough/doing it right.

6:08 PM · Jun 4, 2017 · [Twitter for Android](#)

It's not just about choosing right licences and putting code on github, it's about actually improving accessibility and bringing people in

6:19 PM · Jun 4, 2017 · [TweetDeck](#)

Christie Bahlai, Assistant Professor, Kent University



Intention is not enough!

I was initially very excited to discover this group. I have relatives I care for who are high-risk, and the opportunity of positively improving our overall circumstance through such an event as this biohackathon is uplifting. It's been additionally nice to "see" some familiar friendly faces.

Unfortunately, I've been a bit disappointed by the mannerisms observed in some of these threads. At first I thought perhaps it was just me. Then, a colleague reached out to me with similar concerns. Negative tones and behaviors are counterproductive, especially during such an already stressful time. I unfortunately have too limited of a bandwidth to tolerate such behaviors and am kindly removing myself from the group. A devised formal Code of Conduct may be an appropriate solution.

Wishing the very best to each of us, and that we remember now is and especially important time to be considerate of each other.

(organisers have now added a Code of Conduct)

@malvikasharan @turingway, #TuringWay

Why invest in community culture?

- Common project goals
- Diverse backgrounds & expectations
- Together form a culture!



Why invest in community culture?

- Common project goals
- Diverse backgrounds & expectations
- Together form a culture!

“You, as a project leader, must take initiative with regards to what culture you want to foster. If not, a culture will develop without you.” - Karin Lagesen



Open Research
Communities must be
**inclusive
by design.**

Openness can not be
an afterthought.



The Turing Way:
A community built on a
culture of collaboration

Community Manager – Research Associate



“

The Turing Way is an **open source book project** that involves and supports a **diverse research community** in ensuring that reproducible and ethical **data science** is accessible and comprehensible **for everyone**.

”

The Turing Way Team and Community



Kirstie Whitaker
Turing Research Fellow

The Turing Way is a lightly opinionated guide to reproducible data science.

Our goal is to provide all the information that researchers need at the start of their projects to ensure that they are easy to reproduce at the end.

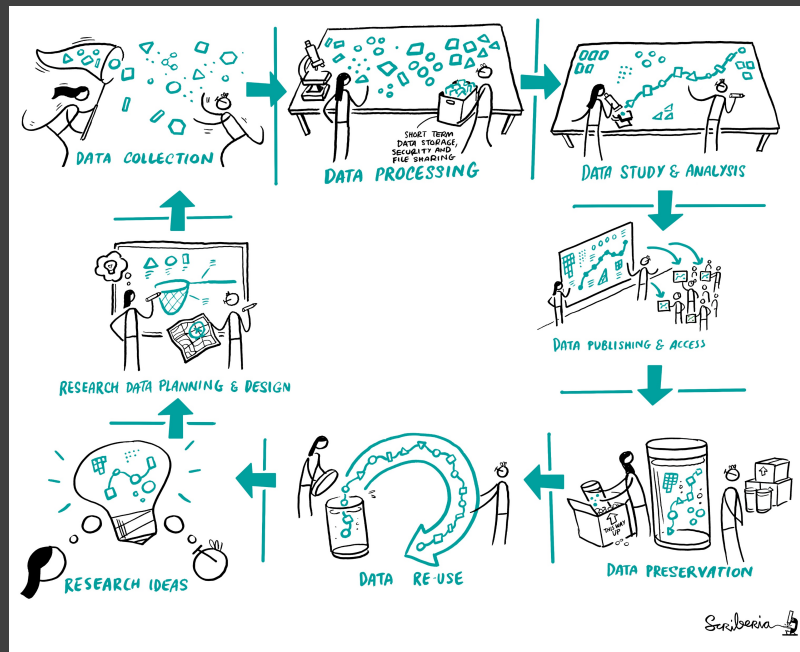
This also means making sure PhD students, postdocs, PIs, and funding teams know which parts of the "responsibility of reproducibility" they can affect, and what they should do to nudge data science to being more efficient, effective, and understandable.



Started as a book on reproducibility

Same analysis steps on the same dataset produces same answer

This process is overwhelming.



The Turing Way Team



Kirstie Whitaker
Turing Research Fellow



Rachael Ainsworth



Becky Arnold



Louise Bowler



Rosie Higman



Sarah Gibson



Patricia Herterich



James Hetherington



Anna Krystalli



Alex Morley



Martin O'Reilly



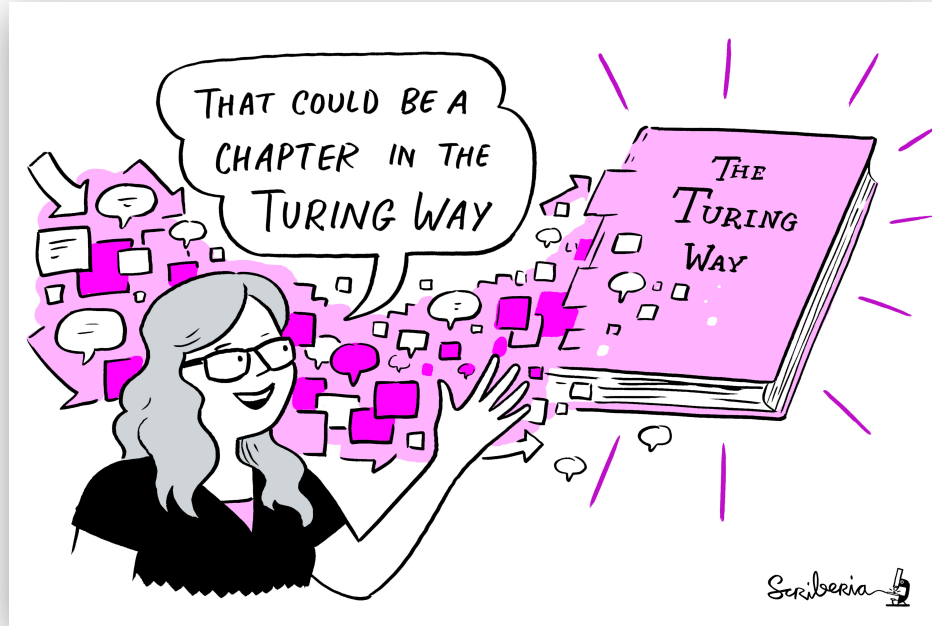
Catherine Lawrence

Full list of contributors on our GitHub: <https://github.com/alan-turing-institute/the-turing-way#contributors>

The Turing Way Team and Community



Kirstie Whitaker
Turing Research Fellow

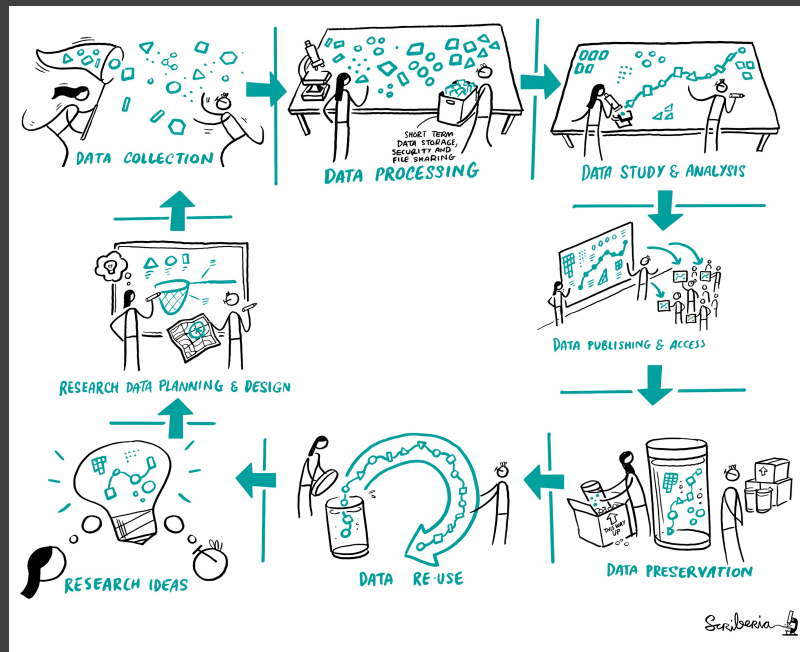


Started as a book on reproducibility

Same analysis steps on the same dataset produces same answer

This process is overwhelming.

1 year, 18 chapters, 80 contributors, and a successful community culture.



The Turing Way Team and Community



Kirstie Whitaker
Turing Research Fellow



Rachael Ainsworth



Becky Arnold



Louise Bowler



Rosie Higman



Sarah Gibson



Patricia Herterich



James Hetherington



Anna Krystalli



Alex Morley



Martin O'Reilly



Catherine Lawrence



~80 Contributors

Full list of contributors on our GitHub: <https://github.com/alan-turing-institute/the-turing-way#contributors>

Expansion of Scope

- Reproducibility
- Project Design
- Collaboration
- Communication
- Ethics

It's about 'the journey'



“

The Turing Way is an open source book project that
involves and supports a diverse research community
in ensuring that reproducible and ethical data science is
accessible and comprehensible for everyone.

”

Sustaining a culture of collaboration

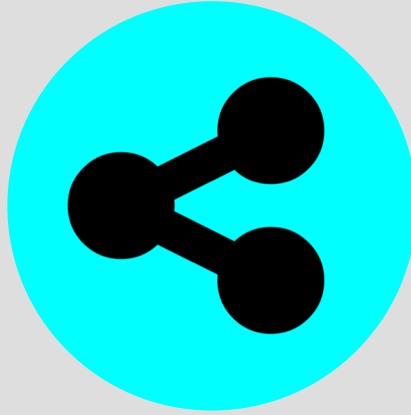


Open Leadership Principles



Understanding

Make your work accessible, clear and maintain authenticity



Sharing

Your work should be easy to adapt, reproduce, and spread

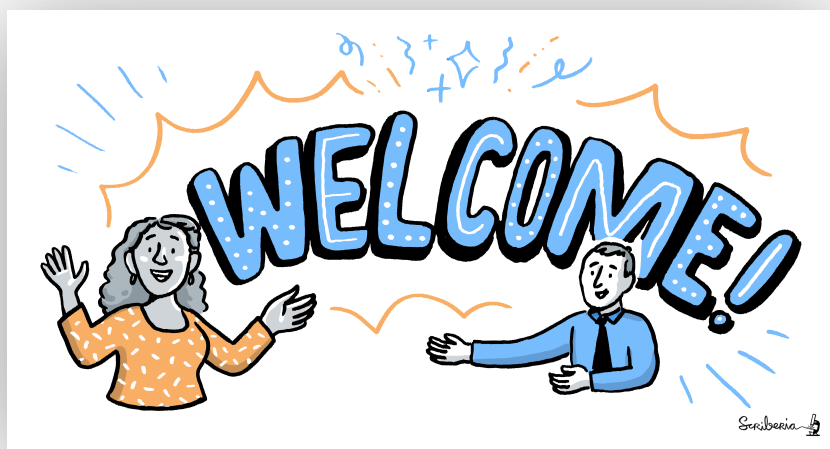


Participation & Inclusion

Build a shared ownership and welcoming space that inspires contributions

Contributions via GitHub

[https://github.com/
alan-turing-institute/the-turing-way](https://github.com/alan-turing-institute/the-turing-way)



The Turing Way

[read the book](#) [receive our newsletter](#) [chat on gitter](#) DOI [10.5281/zenodo.3233853](https://doi.org/10.5281/zenodo.3233853)

all contributors **86**

34 **★ Star** 445 **Fork** 136

[Code](#) [Issues 187](#) [Pull requests 58](#) [Actions](#) [Projects 2](#) [Wiki](#) [Security](#) [Insights](#) [Settings](#)

Host repository for The Turing Way: a how to guide for reproducible data science <https://the-turing-way.netlify.com> [Edit](#)

[hut23](#) [hut23-270](#) [hut23-396](#) [Manage topics](#)

[3,504 commits](#) [53 branches](#) [0 packages](#) [4 releases](#) [76 contributors](#) [View license](#)

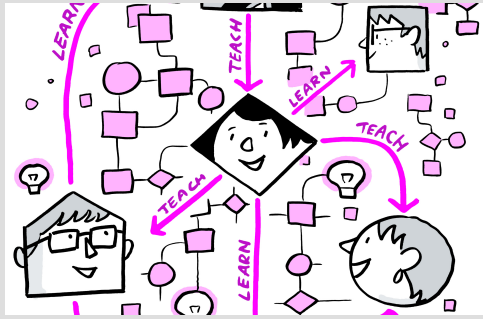
📁 .github	Remove prettier configuration
📁 book	minor update
📁 communications	Fix typos
📁 conferences	Add KW formatting pedantry
📁 project_management	Update online-collaboration-cafe.md
📁 templates	Updating Github templates
📁 tests	Add "et cetera" as a deprecated Latinism
📁 workshops	Remove mis-pasted text



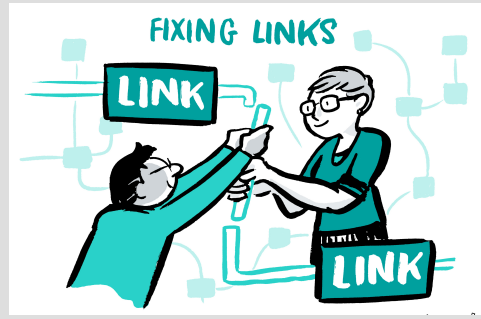
📄 .all-contributorsrc	Merge pull request #991 from alan-turing-institute/all-contributors/a...	5 days ago
📄 .gitignore	ignore pptx in workshop folder	9 months ago
📄 .travis.yml	add html-proof file again	last month
📄 <u>CODE_OF_CONDUCT.md</u>	her -> their	6 months ago
📄 <u>CONTRIBUTING.md</u>	Update CONTRIBUTING.md	2 months ago
📄 GOVERNANCE.md	Read through months later	5 months ago
📄 LICENSE.md	Fix typo in licence	2 months ago
📄 <u>README.md</u>	Merge pull request #991 from alan-turing-institute/all-contributors/a...	5 days ago
📄 book_skeleton.md	Update book_skeleton.md	13 months ago
📄 <u>contributors.md</u>	Add myself to contributors.md	11 months ago
📄 tips_and_tricks_survey.md	Update tips_and_tricks_survey.md	14 months ago
📄 ways_of_working.md	Adjust team contact section	5 months ago

GitHub:
<https://github.com/alan-turing-institute/the-turing-way>

Contribution Pathways



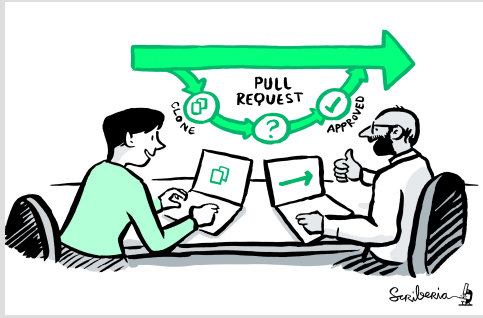
Read/share resources



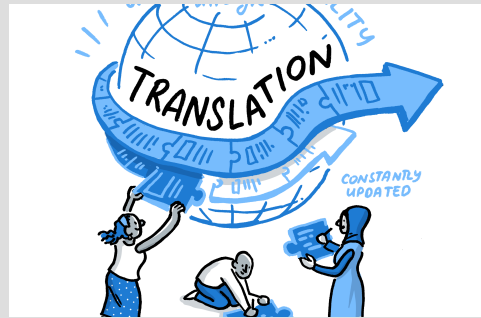
Fix bugs/typos/errors



Engage informally



Review pull requests



Help translate



Improve our culture

In Person Book Dash Events

- People from many different backgrounds and skills
- Contribute to make them meaningful for the wider community



Online Collaboration Café

- Co-working calls to engage with learners and contributors
- Support remote participation of our members

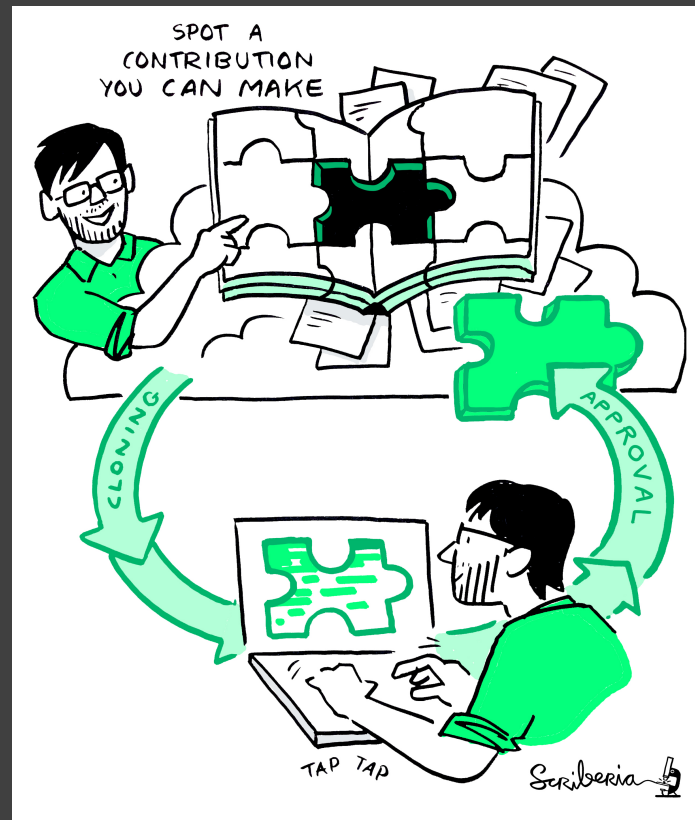


<https://hackmd.io/@KirstieJane/CollabCafe>, next date: 15 April, 19:00-21:00 GMT

Meeting you where you are!

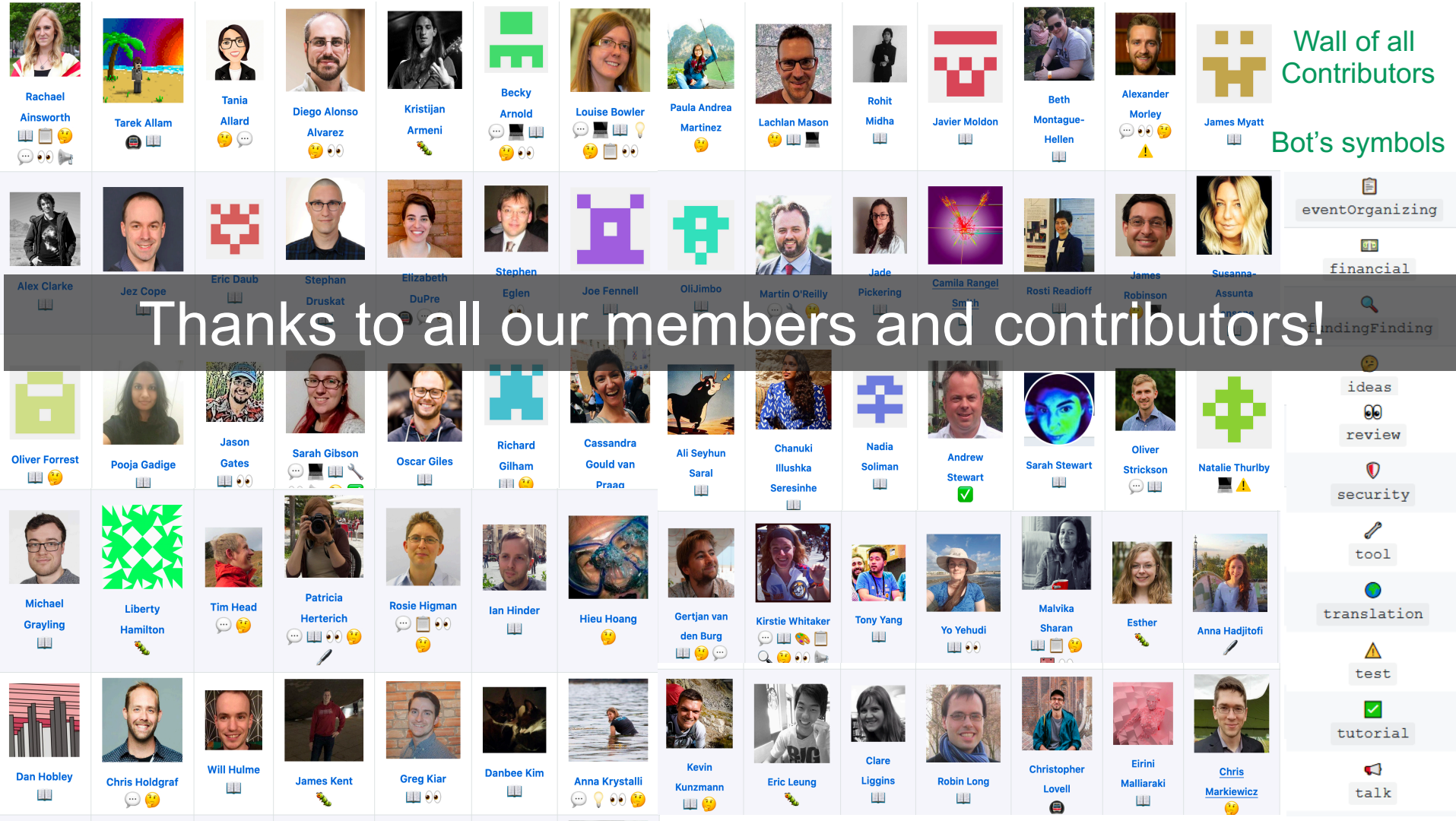
- i. Join the community
- ii. Learn a new skill
- iii. Share your skills
- iv. Collaborate with others
- v. Mentor others' contributions
- vi. Represent this community

We value your participation!



The Turing Way
community promotes
a culture of
collaboration.
Every little bit helps.





Wall of all
Contributors

Bot's symbols

eventOrganizing

financial

ideas

review

security

tool

translation

test

tutorial

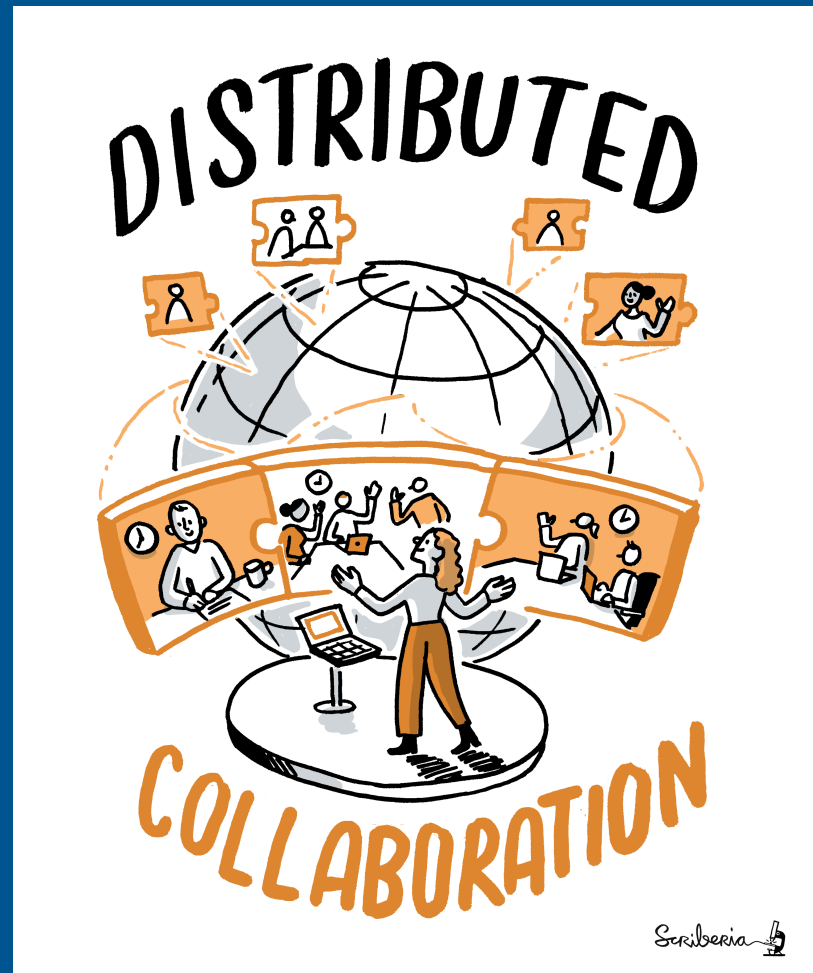
talk

The Turing Way for you!
#CollabW20



Online Research Communities

- Fostering inclusive culture
- Choice of tools and platforms
- Accessibility and security aspects
- Well-being of our members

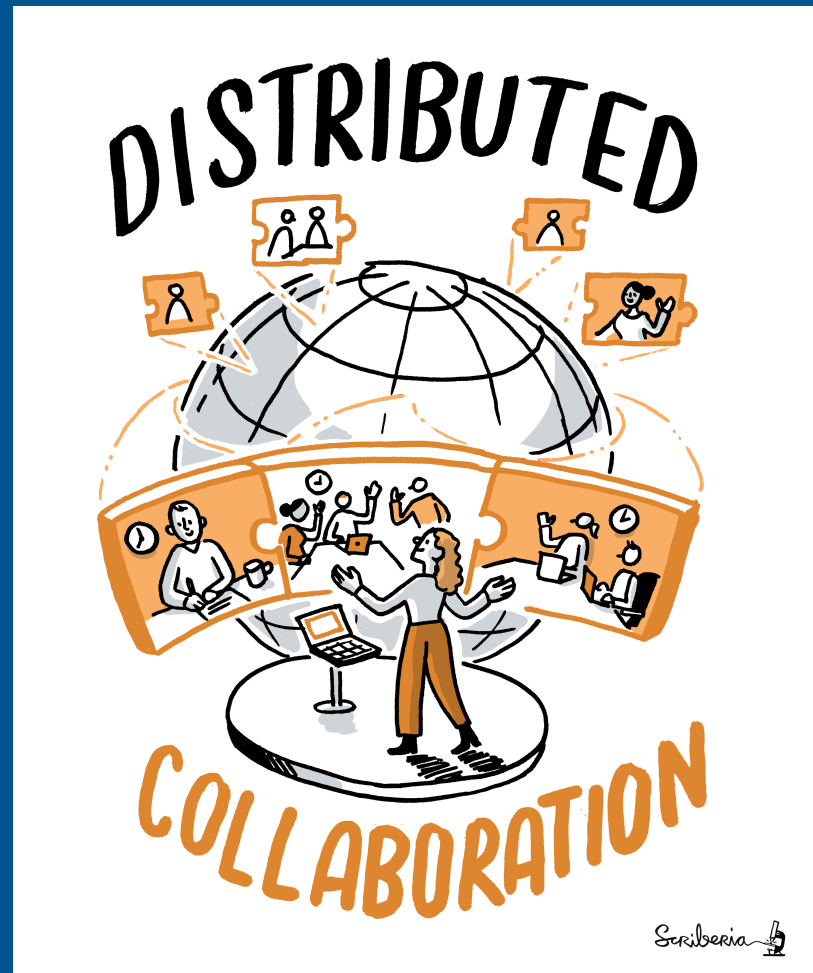


Online Research Communities

- Fostering inclusive culture
- Choice of tools and platforms
- Accessibility and security aspects
- Well-being of our members

#CollabW20 Discussion group I:

Managing ad-hoc online communities during COVID-19 crisis.



An extended and accessible version



The Turing Way

Welcome

Guide for Reproducible Research

Guide for Project Design

Guide for Communication

Guide for Collaboration

Guide for Ethical Research

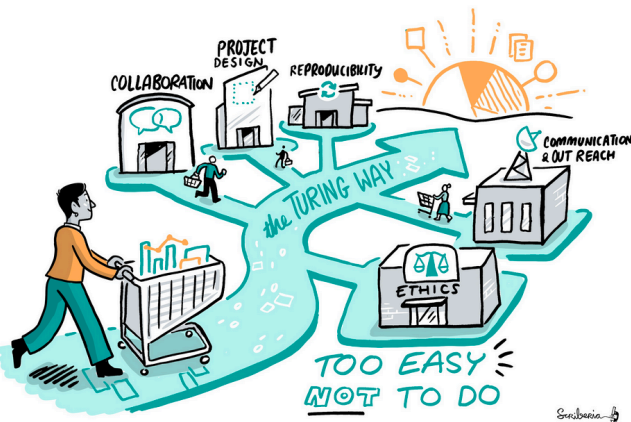
Community Handbook

Powered by [Jupyter Book](#)



Welcome

The Turing Way is an Open Access community-driven guide to reproducible, ethical, inclusive and collaborative data science.



Our goal is to provide all the information that researchers need at the start of their projects to ensure that they are easy to reproduce at the end.

Hackday idea:

Epsilon –
HP5-CW20

The Alan Turing Institute

- Book: the-turing-way.netlify.com
- Twitter: twitter.com/turingway
- Newsletter: tinyletter.com/TuringWay
- Chat: gitter.im/alan-turing-institute/the-turing-way
- GitHub: github.com/alan-turing-institute/the-turing-way
- Original artwork by Scriberia: <https://doi.org/10.5281/zenodo.3332808>



This talk involves many lessons learned from the hours of discussions with Kirstie Whitaker, Sarah Gibson, Yo Yehudi, Patricia Herterich and Norman Davey.

Special mentions to these communities:



THE
CARPENTRIES

moz://a



Open Life Science



Software
Sustainability
Institute



binder

netherlands

eScience center